

# Inspection Photos

11/05/2019

Operator: WHITING OIL & GAS CORPORATION  
- 96155

Location ID: 315169  
Rio Blanco County, CO

Aaron Trujillo  
NW Reclamation Specialist  
COGCC

## Inspection Photos

Operator Name: WHITING OIL & GAS CORPORATION - 96155

Location ID: 315169



**Photo 1:** Photo taken from the CR 218, facing west. Photo shows access road leading to the location



**Photo 2:** Photo taken from the access road, facing south. Photo shows orange fence used to restrict vehicle access over the reclamation areas. Fence in disrepair and vehicle traffic evident along access road.



## Inspection Photos

Operator Name: WHITING OIL & GAS CORPORATION - 96155

Location ID: 315169



**Photo 3:** Photo taken from the access road, facing west. Photo shows reclamation over access road is not progressing towards COGCC 1000 series rules and requirements. Vegetation observed on access road predominantly undesirable weedy plant species such as *Salsola* sp. And *Kochia*. Desirable species reflective of the reference area were not observed to be establishing on access road.



**Photo 4 :** Photo taken from the access road, facing north. See comments under photo 3.



## Inspection Photos

Operator Name: WHITING OIL & GAS CORPORATION - 96155

Location ID: 315169



**Photo 5:** Photo taken from the access road, facing west. Photo shows area where access road splits and forms a loop leading to the well and battery locations. See comments under photo 3.



**Photo 6:** Photo taken from the access road, east of the location facing west. Photo shows stormwater erosion degradation along sloped access road.



## Inspection Photos

Operator Name: WHITING OIL & GAS CORPORATION - 96155

Location ID: 315169



**Photo 7:** Photo taken from the east end of the location, facing east. Phot shows stormwater erosion degradation along sloped access road. Insufficient stormwater and erosion control BMPs on access road.



**Photo 8:** Photo taken from the east end of the location, facing southwest. Photos 8-10 provides and overview of the well location from southwest, west to northwest. Photo shows vegetation over the reclamation area; vegetation on the location is predominantly undesirable weedy plant species such as Salsola sp. and Kochia. Vegetation on the north and southern ends of the location appears to be progressing towards reclamation requirements. Additional seeding will likely be required for location to meet COGCC 1004 uniform desirable vegetative requirements.



## Inspection Photos

Operator Name: WHITING OIL & GAS CORPORATION - 96155

Location ID: 315169



**Photo 9:** See comments under photo 8.



**Photo 10:** See comments under photo 8.



## Inspection Photos

Operator Name: WHITING OIL & GAS CORPORATION - 96155

Location ID: 315169



**Photo 11:** Photo taken from the north end of the location, facing west. Photo shows desirable vegetative establishment on the north end of the location. The northern and southern ends of the location appear to be progressing towards reclamation requirements.



**Photo 12:** Photo taken from the southern end of the battery location. Photo shows reclamation of the access road and battery is not progressing towards reclamation requirements.



## Inspection Photos

Operator Name: WHITING OIL & GAS CORPORATION - 96155

Location ID: 315169



**Photo 13:** Photo taken from the south end of the battery location. Photo shows pipe, possibly a culvert, remaining at the battery.



**Photo 14:** See comments under photo 13.



## Inspection Photos

Operator Name: WHITING OIL & GAS CORPORATION - 96155

Location ID: 315169



**Photo 15:** Photo taken from the battery location facing west. Photo shows battery location remains predominantly bare and exposed soil. Reclamation of the battery location is not progressing towards reclamation standards.



**Photo 16:** Photo taken from the access road. Photo shows what appears to be gravel remaining on the access road. Material was not observed on the soils of the adjacent reference areas. Aggregate likely hindering desirable vegetative establishment.



## Inspection Photos

Operator Name: WHITING OIL & GAS CORPORATION - 96155

Location ID: 315169



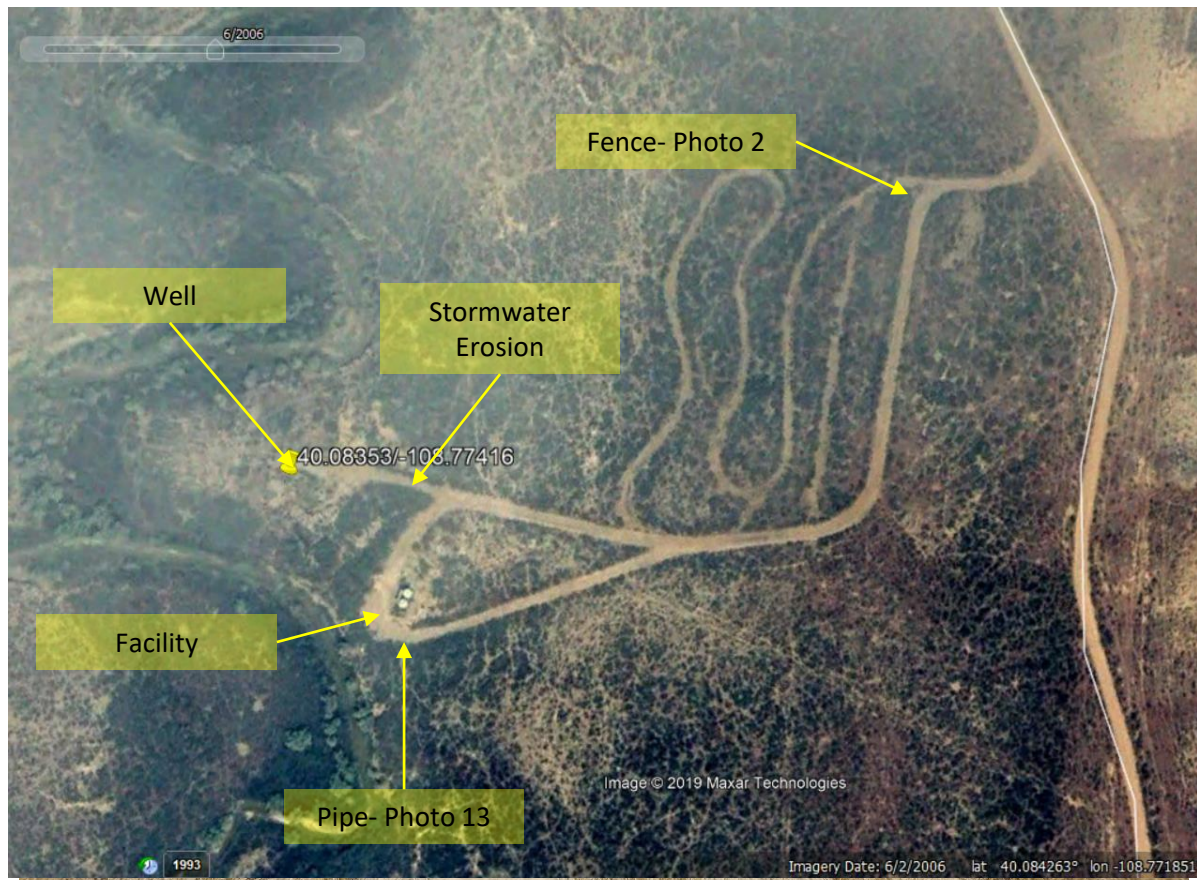
**Photo 17:** Photo shows vegetation over the adjacent reference area.



**COLORADO**  
Oil & Gas Conservation  
Commission  
Department of Natural Resources



Inspection Photos  
Operator Name: WHITING OIL & GAS CORPORATION - 96155  
Location ID: 315169



**Photo 18:** 2006 Google Earth Aerial imagery. Photo shows overview of the well and battery locations, and access road.

