



PIONEER

Pioneer Energy Services

RADIAL BOND LOG WITH GAMMA RAY

Comp. ANADARKO PETROLEUM CORP.
Well SARCHET JOHN E UNIT 1
Field WATTENBERG
Co. WELD
State COLORADO

Company **ANADARKO PETROLEUM CORP.**
Well **SARCHET JOHN E UNIT 1**
Field **WATTENBERG**
County **WELD** State **COLORADO**

Location: API #: 0512307389 Other Services
SHL: SWSW 990' FSL & 990' FWL
LAT: 40.20600/LONG: -104.76950
SEC 22 TWP 3N RGE 66W
Permanent Datum GL Elevation 4922
Log Measured From GL 0 Above Perm. Datum
Drilling Measured From KB
CCL
K.B. 4931
D.F. 4931
G.L. 4922

Date of Service	15-NOV-2019		
Run Number	ONE		
Depth Driller or PBTD	7980		
Depth Logger	3500		
Bottom Log Interval	3500		
Top Log Interval	0		
Open Hole Size	7.875		
Type Fluid	WATER		
Fluid Level	FULL		
Fluid Density	8.4		
Max. Recorded Temperature	154 degF		
Max. Wellhead Pressure	500 PSI		
Wellhead Connection	TUBING HANGER		
Estimated Cement Top	N/A		
Unit Number	P-57		
Wireline Size	9/32		
Location	FORT MORGAN		
Recorded By	MAX PACE		
Witnessed By	FIDEL GONZALEZ		
	Size	Wt/Ft	Top
Tubing Record			Bottom
Surface Casing	8.625	24#	0
Production Casing	4.5	11.6#	0
Liner Record			7979

<<< Fold Here >>>

All interpretations are opinions based on inferences from electrical or other measurements and Pioneer Wireline Services, LLC cannot and does not guarantee the accuracy or correctness of any interpretation, and Pioneer Wireline Services, LLC will not be liable or responsible for any loss, costs, damages, or expenses incurred or sustained by anyone resulting from any interpretation made by any of our officers, agents or employees.

Comments

N/A DENOTES NOT AVAILABLE OR NON-APPLICABLE.
PROBE RBL-DC 1411-67 CALIBRATED ON 11/3/2019
FREE PIPE PASS PERFORMED AT 2086 FEET

THANK YOU FOR USING PIONEER ENERGY SERVICES!

Your Pioneer Energy Services Crew

Tool Data - Services

Serial Number

Engineer:
Operator:
Operator:
Operator:



Top - Bottom


BHTEMP_Src TEMP	BOREID in 7.875	BOTTEMP degF 100	CASED? Yes	CASEOD in 4.5	CASETHCK in 0	CASEWGHT lb/ft 11.6
CMNTTHCK in 0	CMTTKCOR Off	CSTKCOR Off	MAXAMPL mV 0	MINAMPL mV 1	MINATTN db/ft 0.08	NPORSEL Limestone
PERFS 0	PPT usec 0	SRFTEMP degF 0	SZCOR Off	TDEPTH ft 0		


Variable Description

BHTEMP_Src : BHTEMP Input Source Selector
BOREID : Borehole I.D.
BOTTEMP : Bottom Hole Temperature
CASED? : Cased hole ?
CASEOD : Casing O.D.
CASETHCK : Casing Thickness
CASEWGHT : Casing Weight
CMNTTHCK : Cement Thickness
CMTTKCOR : CN CemThk. Cor. ?
CSTKCOR : CN CasThk. Cor. ?

MAXAMPL : Maximum Amplitude
MINAMPL : Minimum Amplitude
MINATTN : Minimum Attenuation
NPORSEL : Neutron Porosity Curve Select
PERFS : Perforation Flag
PPT : Predicted Pipe Time
SRFTEMP : Surface Temperature
SZCOR : CN Size Cor. ?
TDEPTH : Total Depth

Sensor	Offset (ft)	Schematic	Description	Length (ft)	O.D. (in)	Weight (lb)
TEMP	17.33		Cable Head-Titan_144 1 7/16" Titan Cable Head	1.03	1.44	2.00
			Centralizer-275 Probe 2 3/4" Probe Adjustable Spring Centralizer	2.88	2.75	15.00
			PROBE-RBT-DIGITAL-RBL-DCT (FW1411-9.21) Probe 2 3/4" Radii Bond with Temp-Corrosion Package	11-9.21	2.75	105.00
WVFS8	15.03					
WVFS7	15.03					
WVFS6	15.03					
WVFS5	15.03					
WVFS4	15.03					
WVFS3	15.03					
WVFS2	15.03					
WVFS1	15.03					
WVFCAL	15.03					
WVF3FT	15.03					

WVF5FT	14.03		Centralizer-275 Probe 2 3/4" Probe Adjustable Spring Centralizer	2.88	2.75	15.00
HEADVOLT	10.84					
CCL	7.09					
GCT_TEMP	6.30					
GR	5.71		PROBE-GR/CCL-DIGITAL-275 Probe GCT 4.75210) Probe 2 3/4" Gamma Ray/Temp/CCL		2.75	60.00
			Centralizer-275 TekCo 2 3/4" TekCo Centralizer	2.88	2.75	20.00
			Bullnose-PROBE Probe Go Pin Pressure Cap	0.33	1.38	1.00
Dataset: anadarko_sarchet_john_e_unit1_0512307389_11152019_scbl.db: field/well/run1/pass6 Total length: 23.96 ft Total weight: 218.00 lb O.D.: 2.75 in						


PIONEER

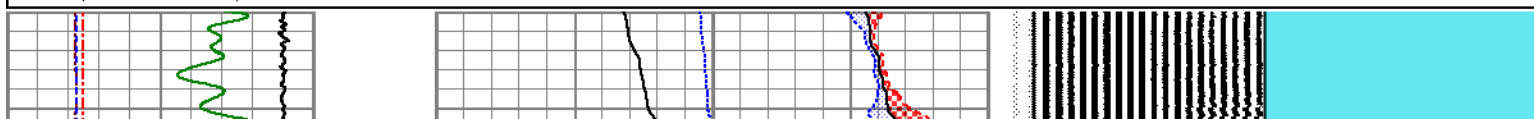
Pioneer Energy Services

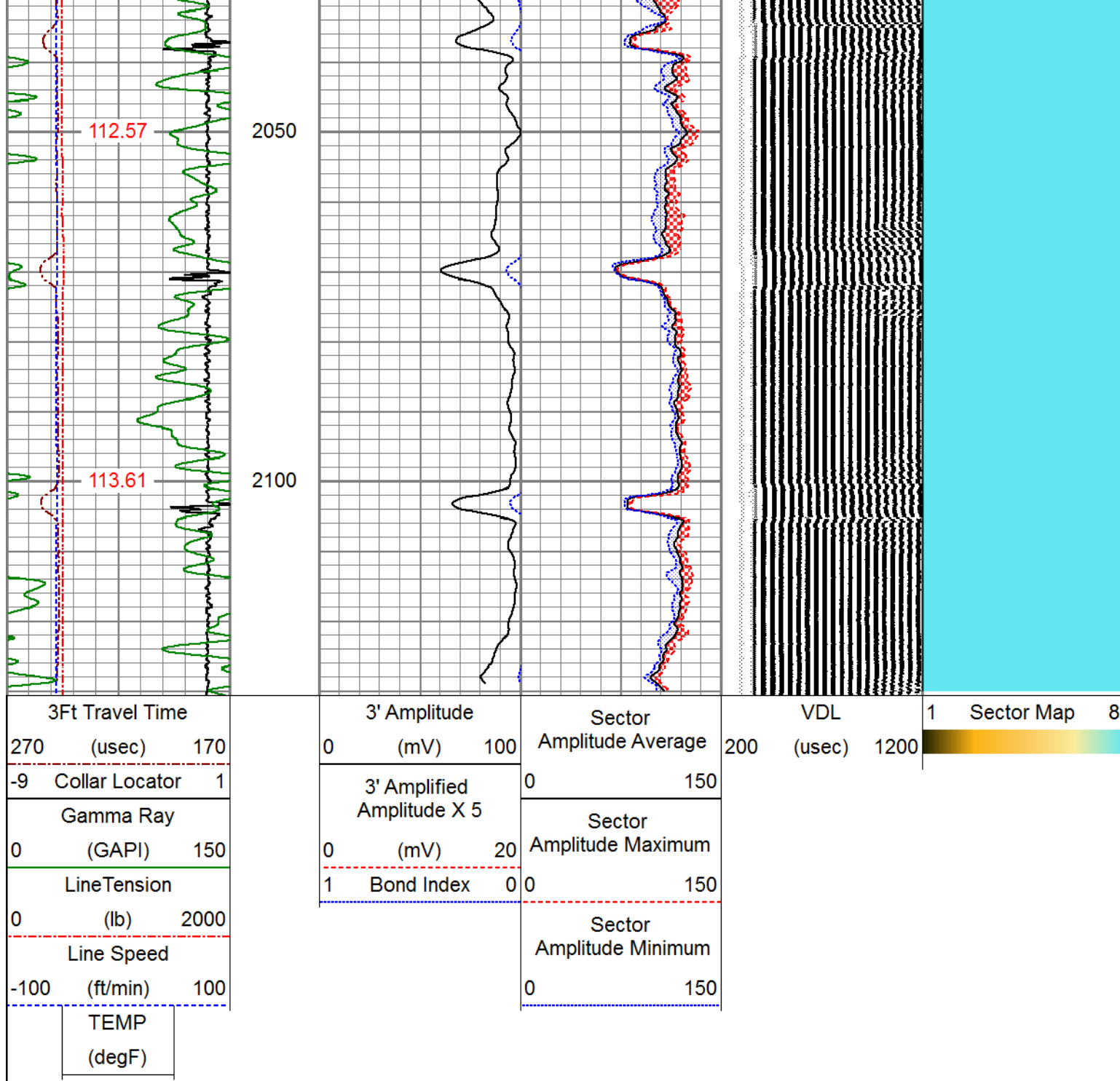
FREE PIPE SECTION


ZERO PSI APPLIED AT SURFACE

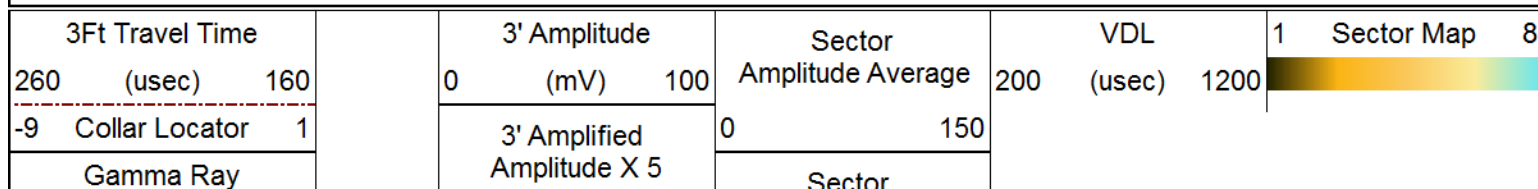
Database File anadarko_sarchet_john_e_unit1_0512307389_11152019_scbl.db
Dataset Pathname pass3
Presentation Format pinr_scbl
Dataset Creation Fri Nov 15 13:25:28 2019
Charted by Depth in Feet scaled 1:240

3Ft Travel Time	3' Amplitude	Sector	VDL	1	Sector Map	8
270 (usec) 170	0 (mV) 100	Amplitude Average	200 (usec) 1200			
-9 Collar Locator 1	3' Amplified Amplitude X 5	0 150				
Gamma Ray	0 (mV) 20	Sector Amplitude Maximum				
0 (GAPI) 150	1 Bond Index 0	0 150				
LineTension		Sector Amplitude Minimum				
0 (lb) 2000		0 150				
Line Speed						
-100 (ft/min) 100						
TEMP						
(degF)						



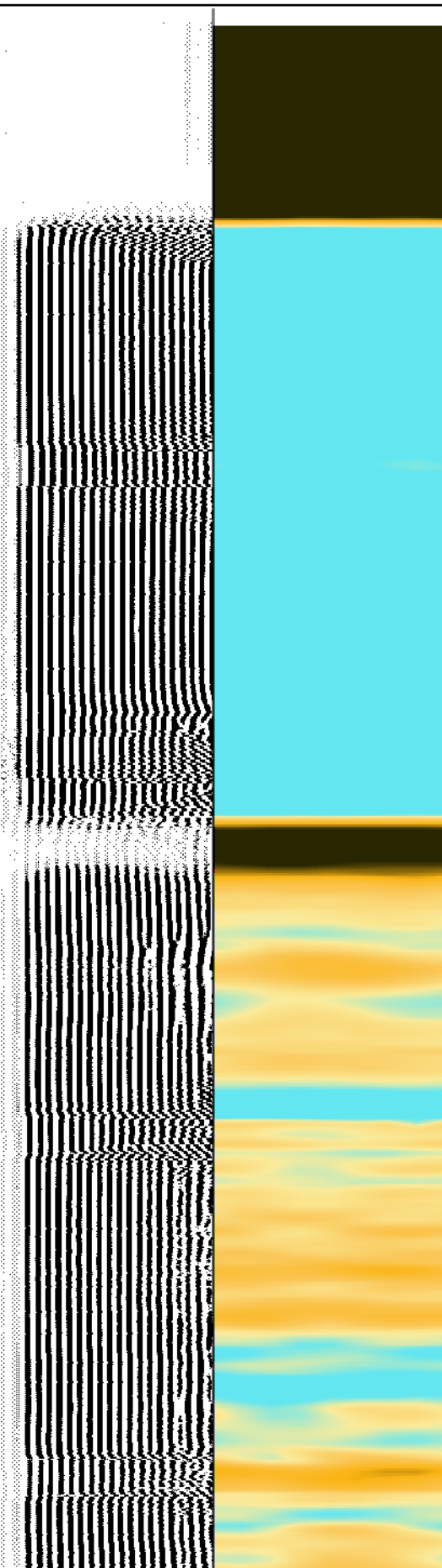
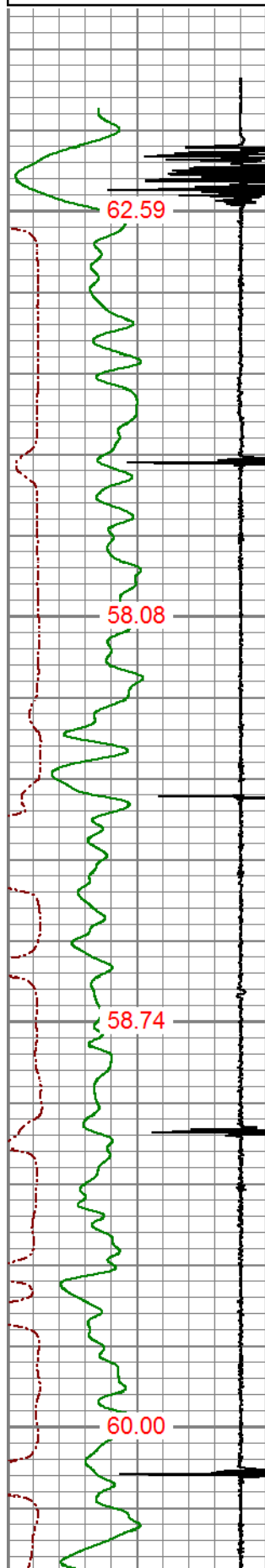


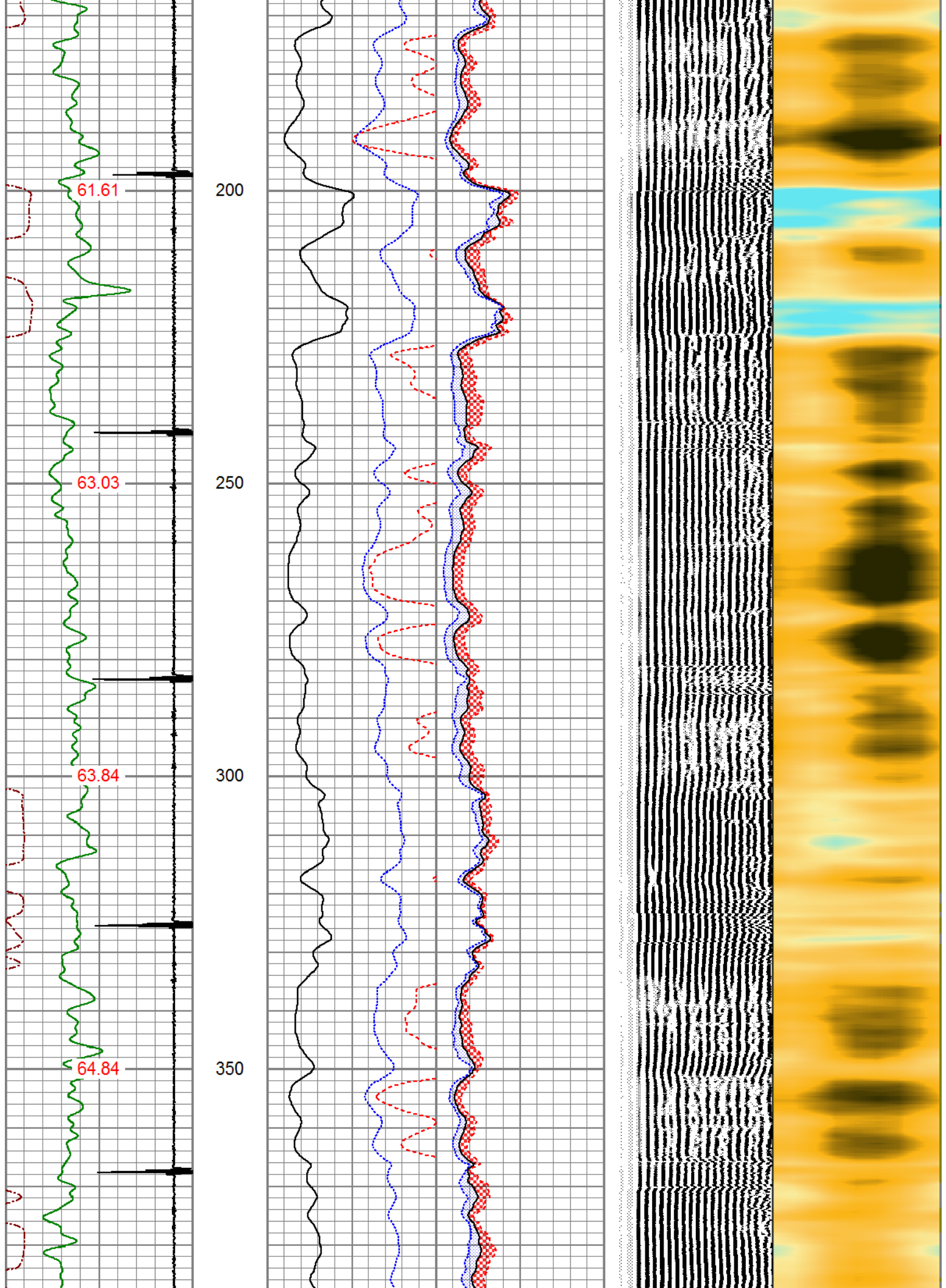
 PIONEER Pioneer Energy Services	MAIN LOG
	500 PSI APPLIED AT SURFACE
Database File	anadarko_sarchet_john_e_unit1_0512307389_11152019_scbl.db
Dataset Pathname	pass6
Presentation Format	pinr_scbl
Dataset Creation	Fri Nov 15 13:38:13 2019
Charted by	Depth in Feet scaled 1:240

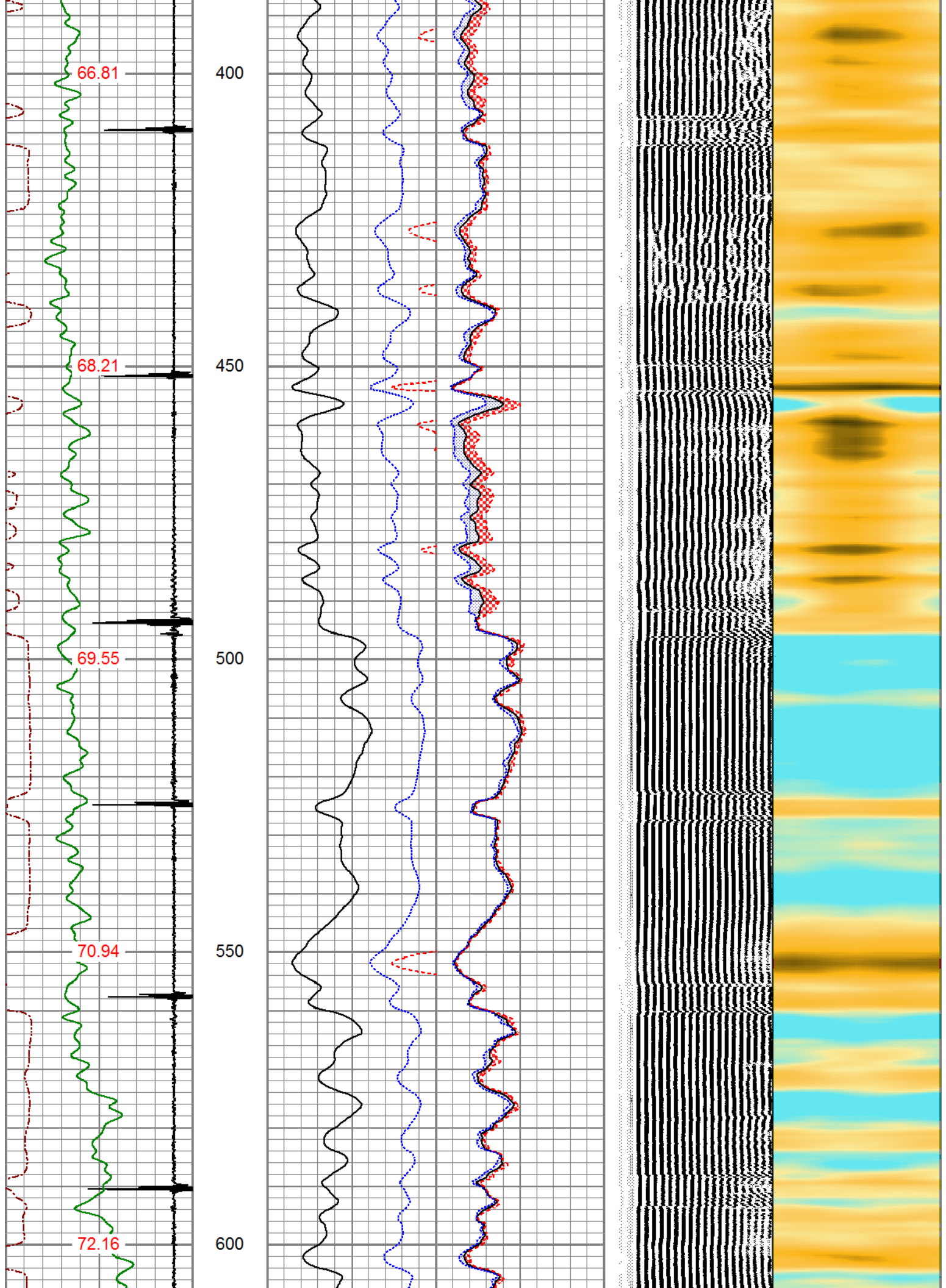


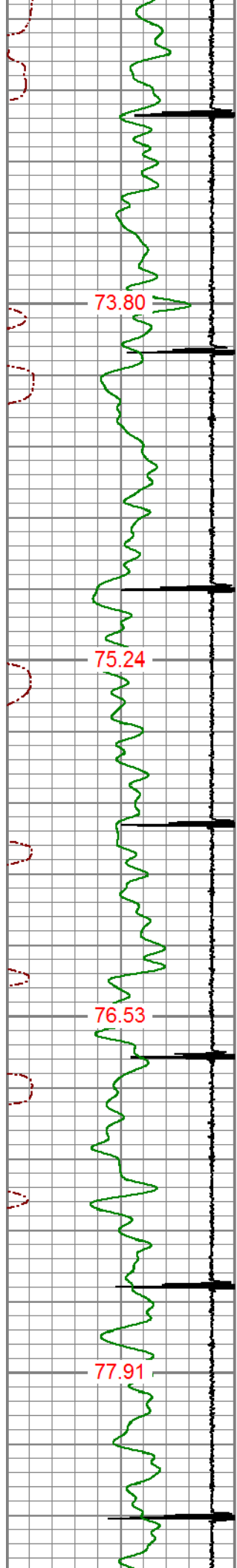
0	(GAPI)	200
	TEMP	
	(degF)	

0	(mV)	20	Amplitude Maximum	
1	Bond Index	0	0	150
			Sector	
			Amplitude Minimum	
			0	150







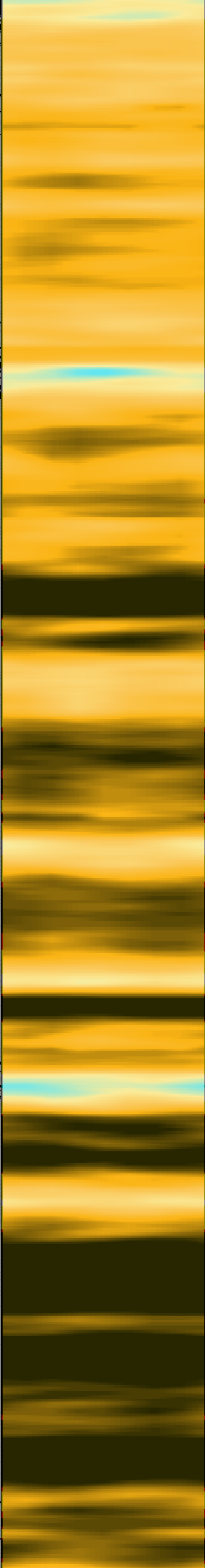
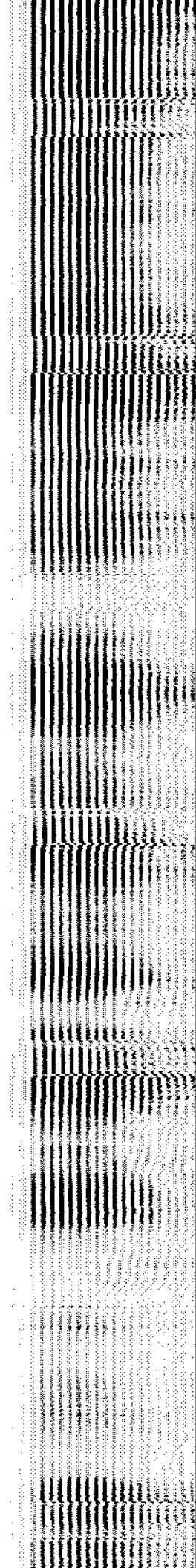
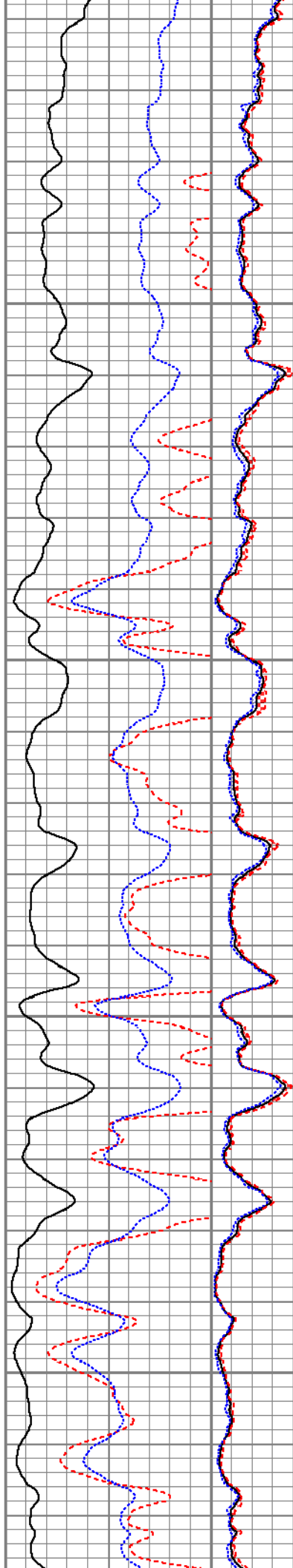


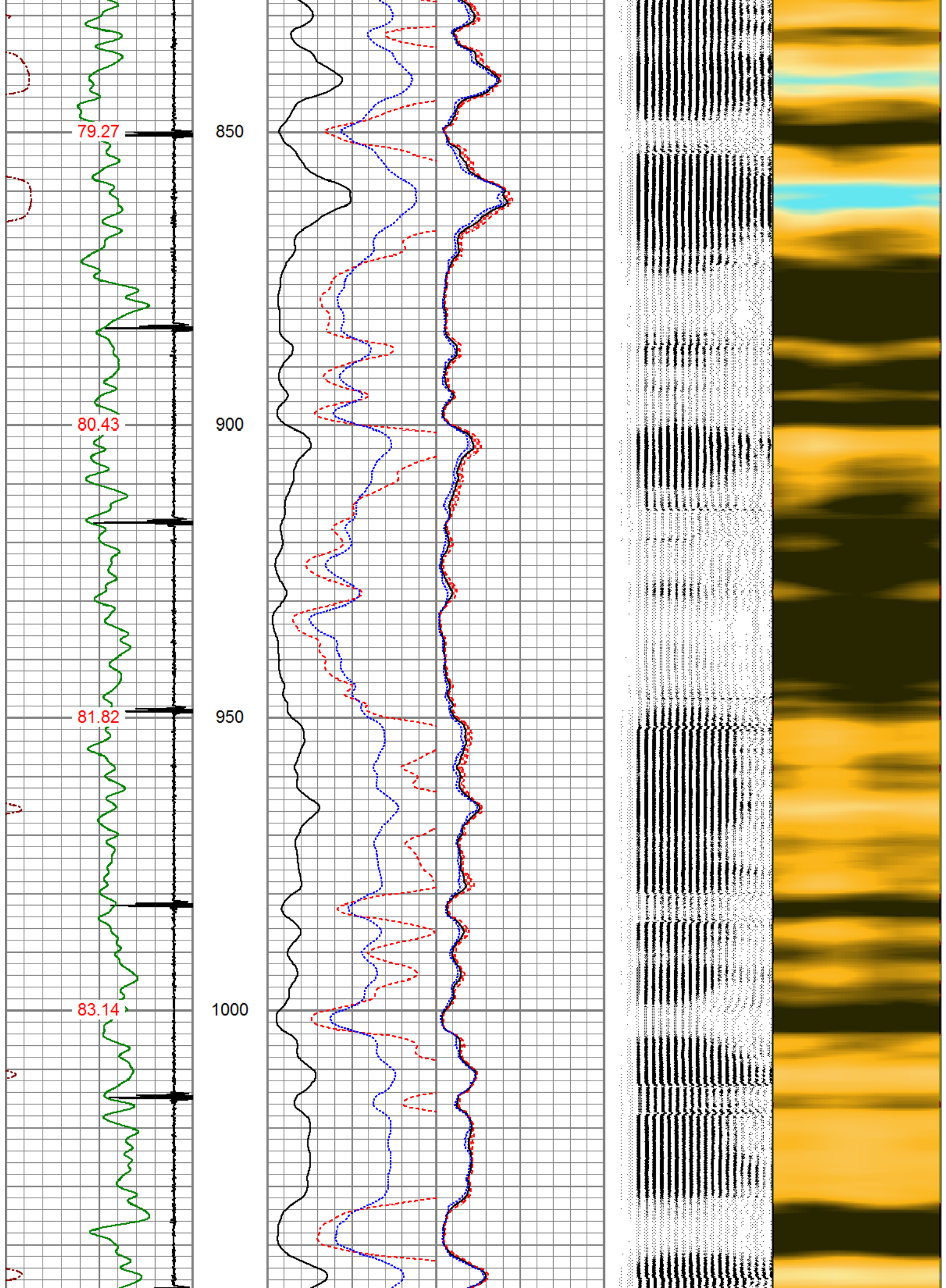
650

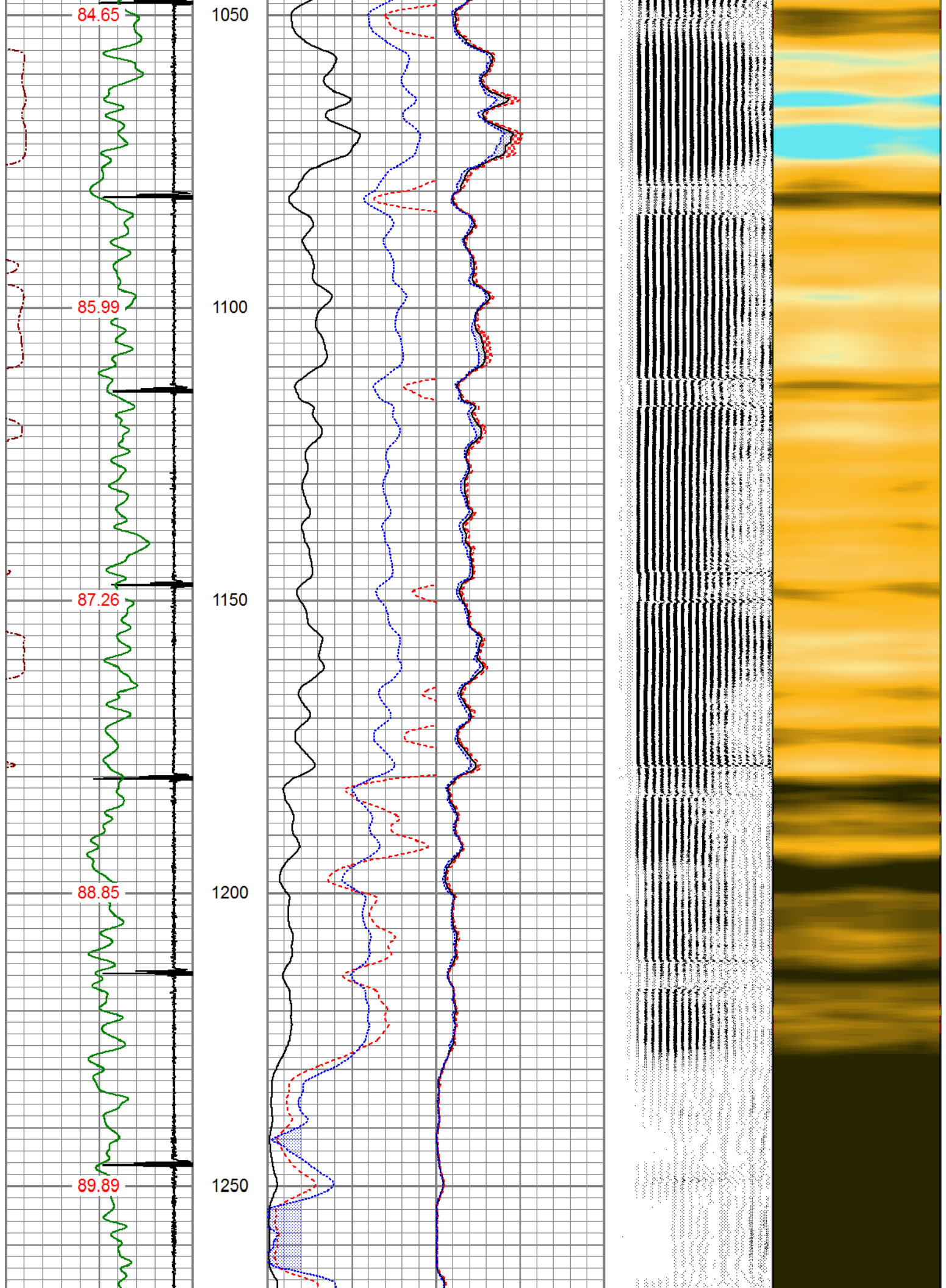
700

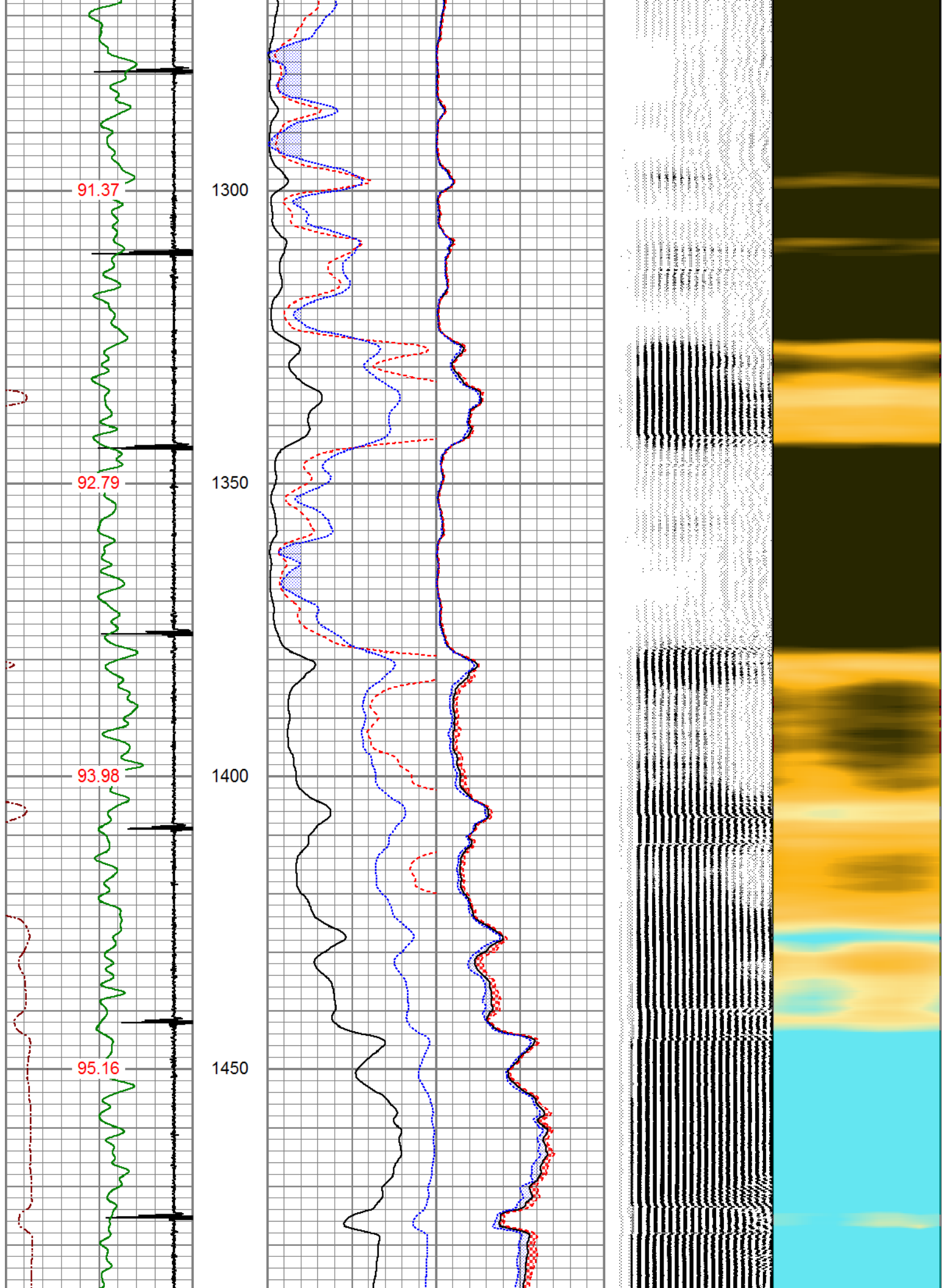
750

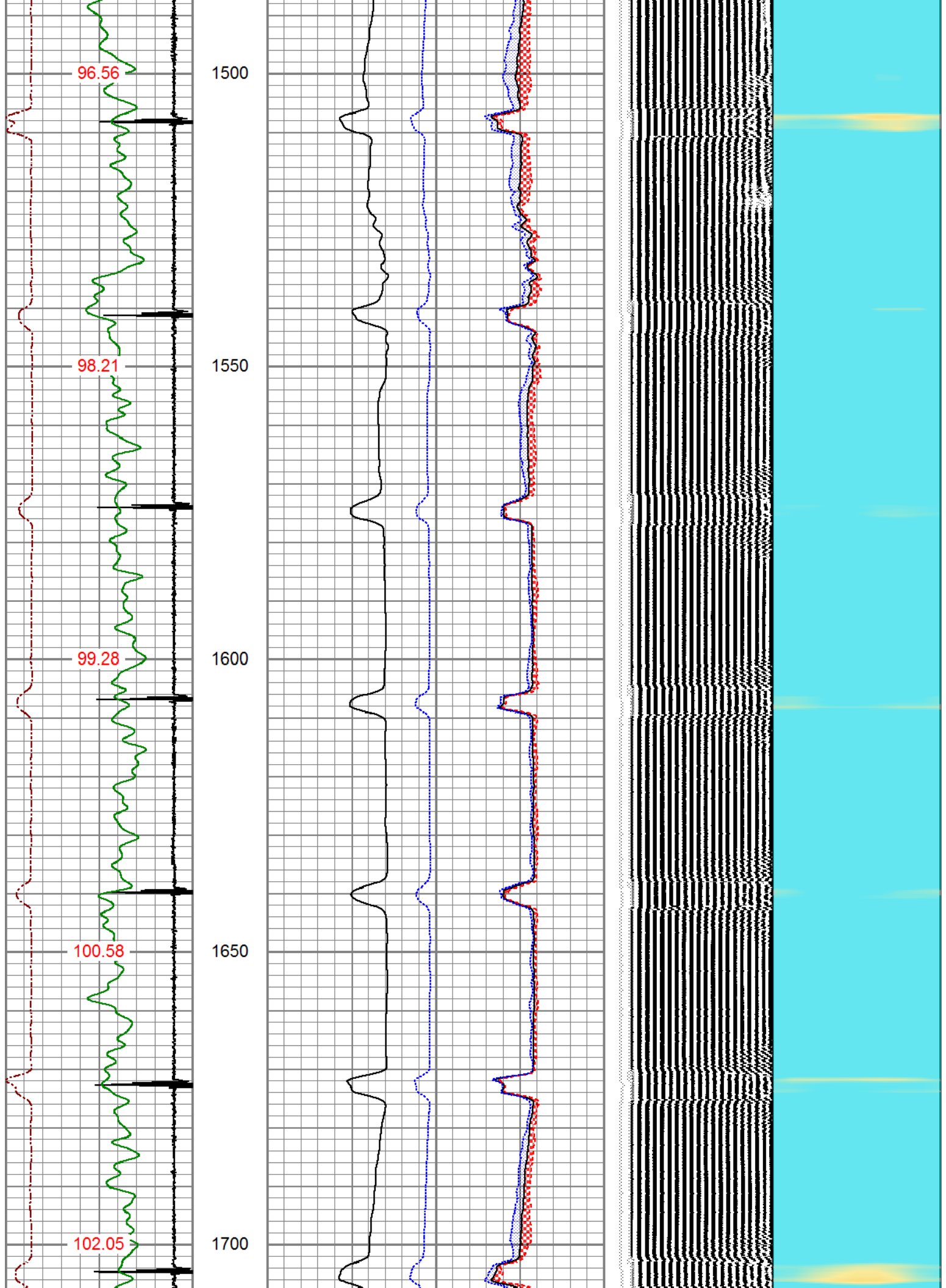
800

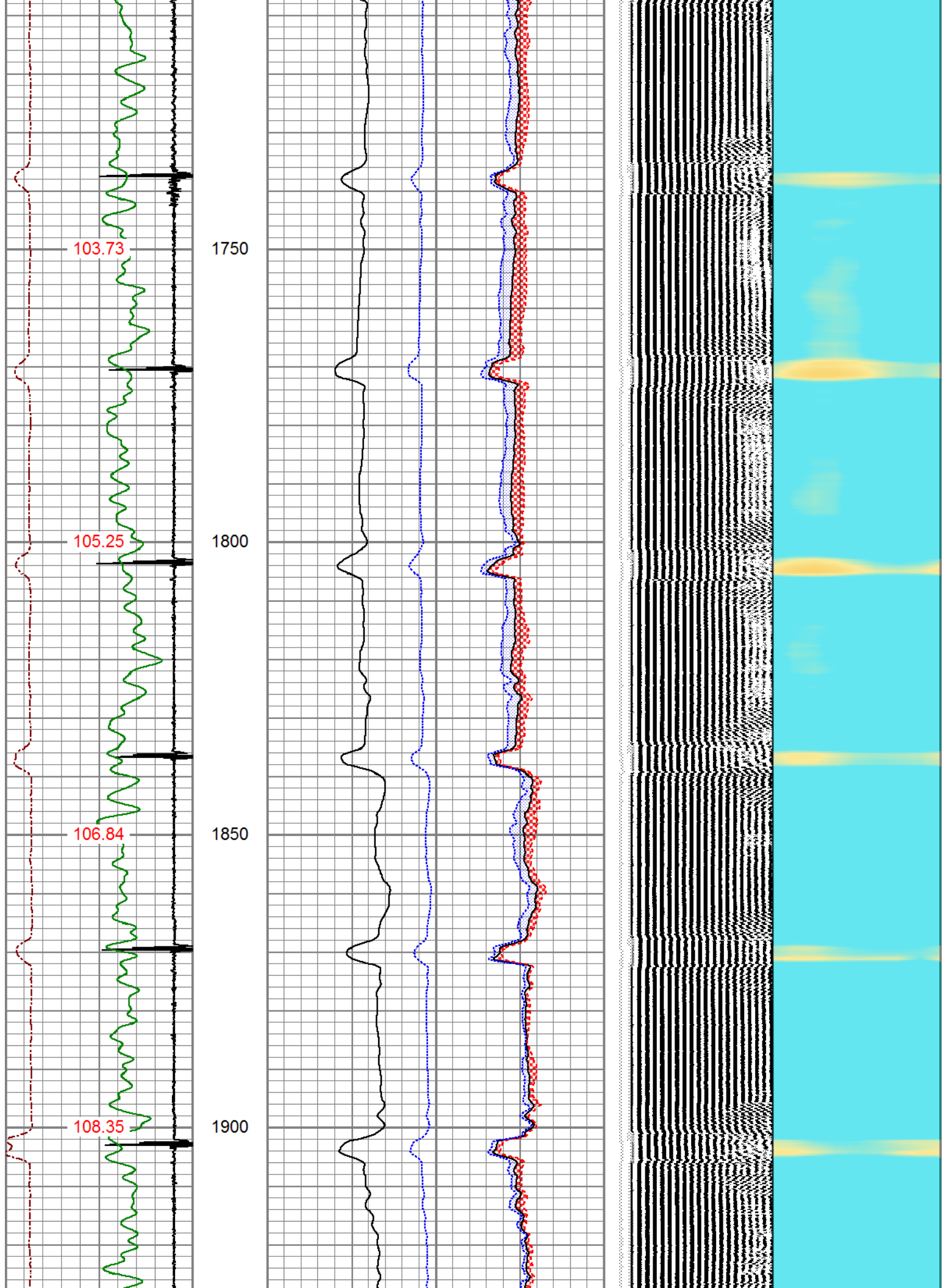


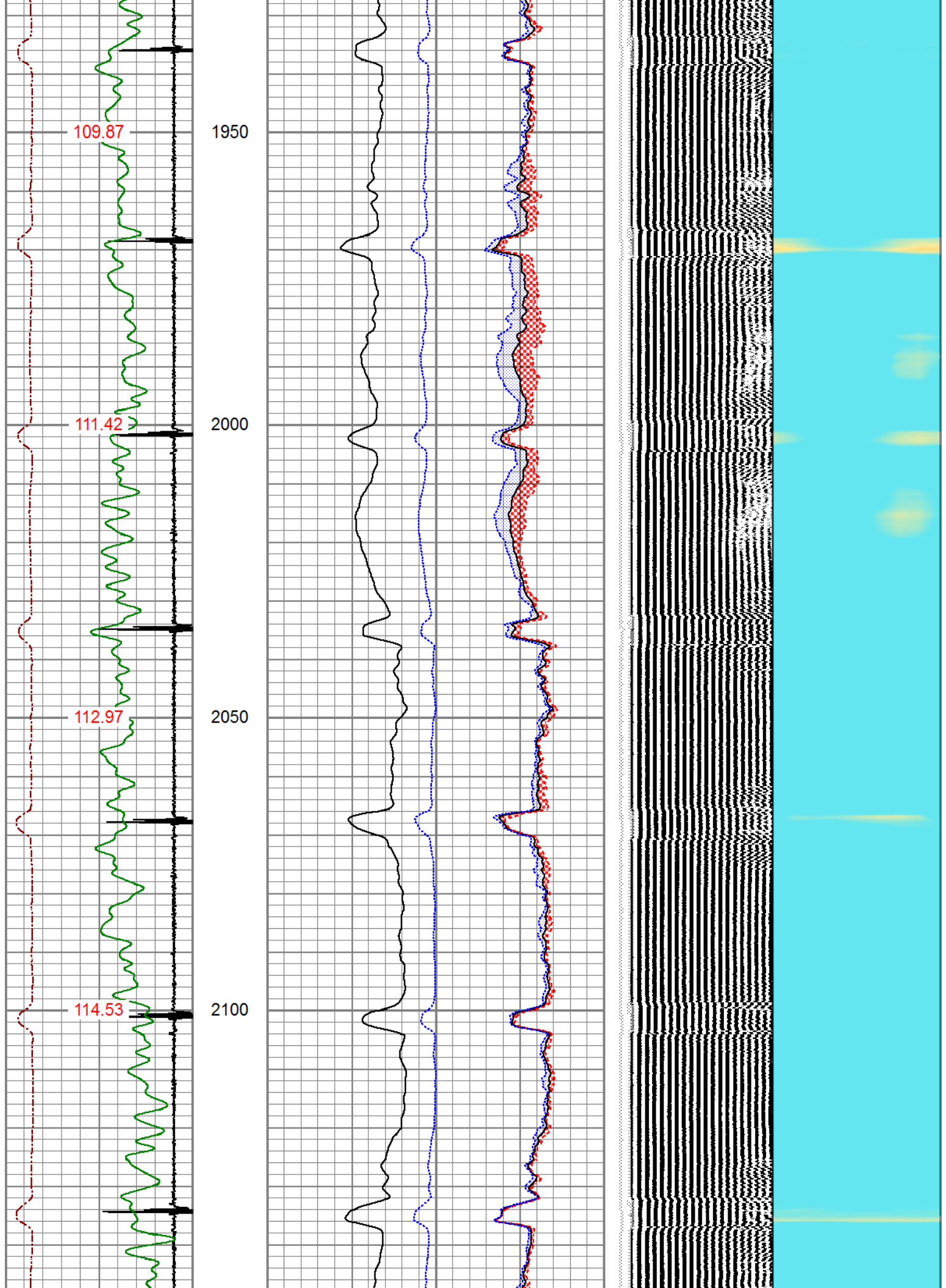


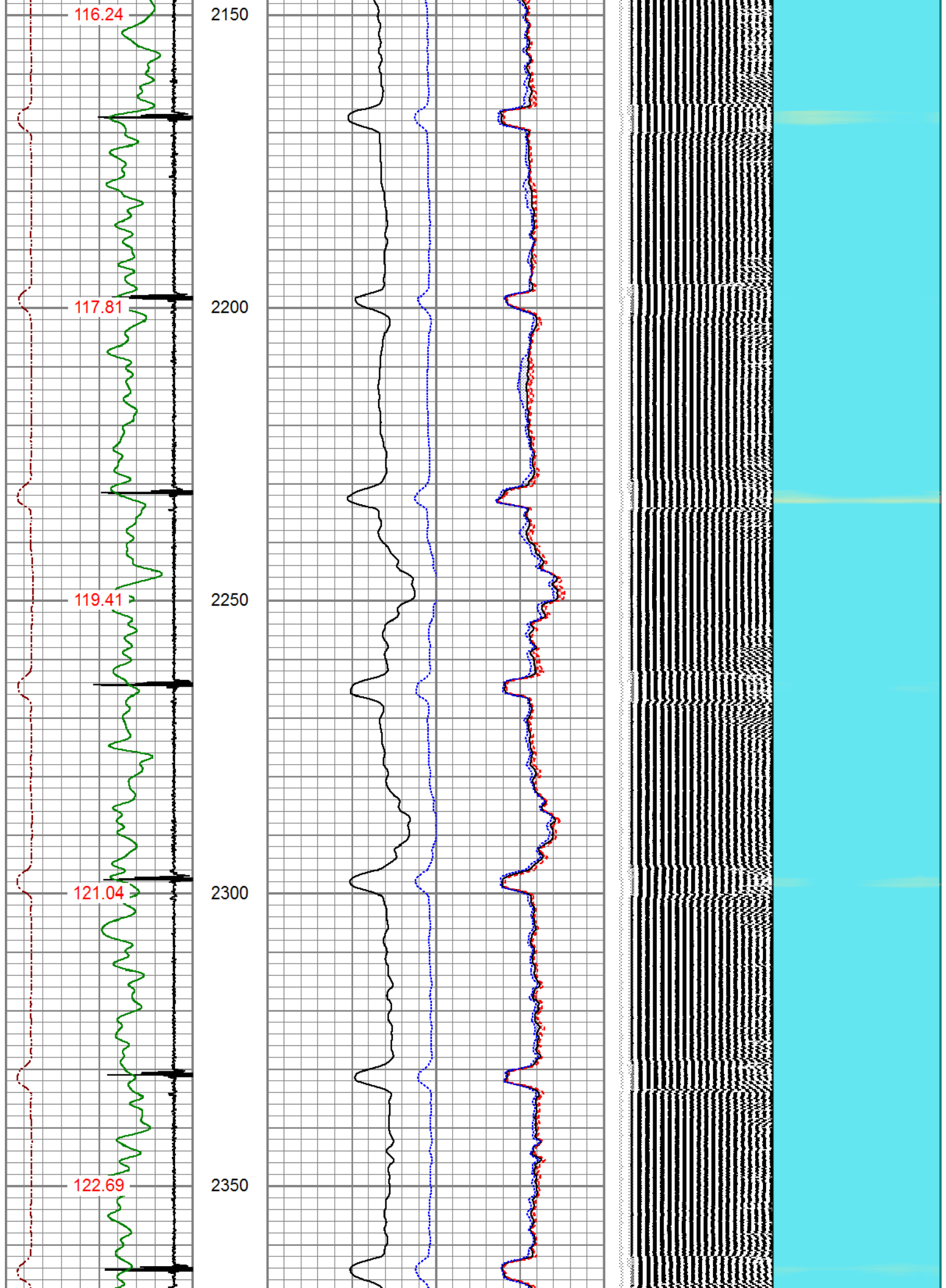


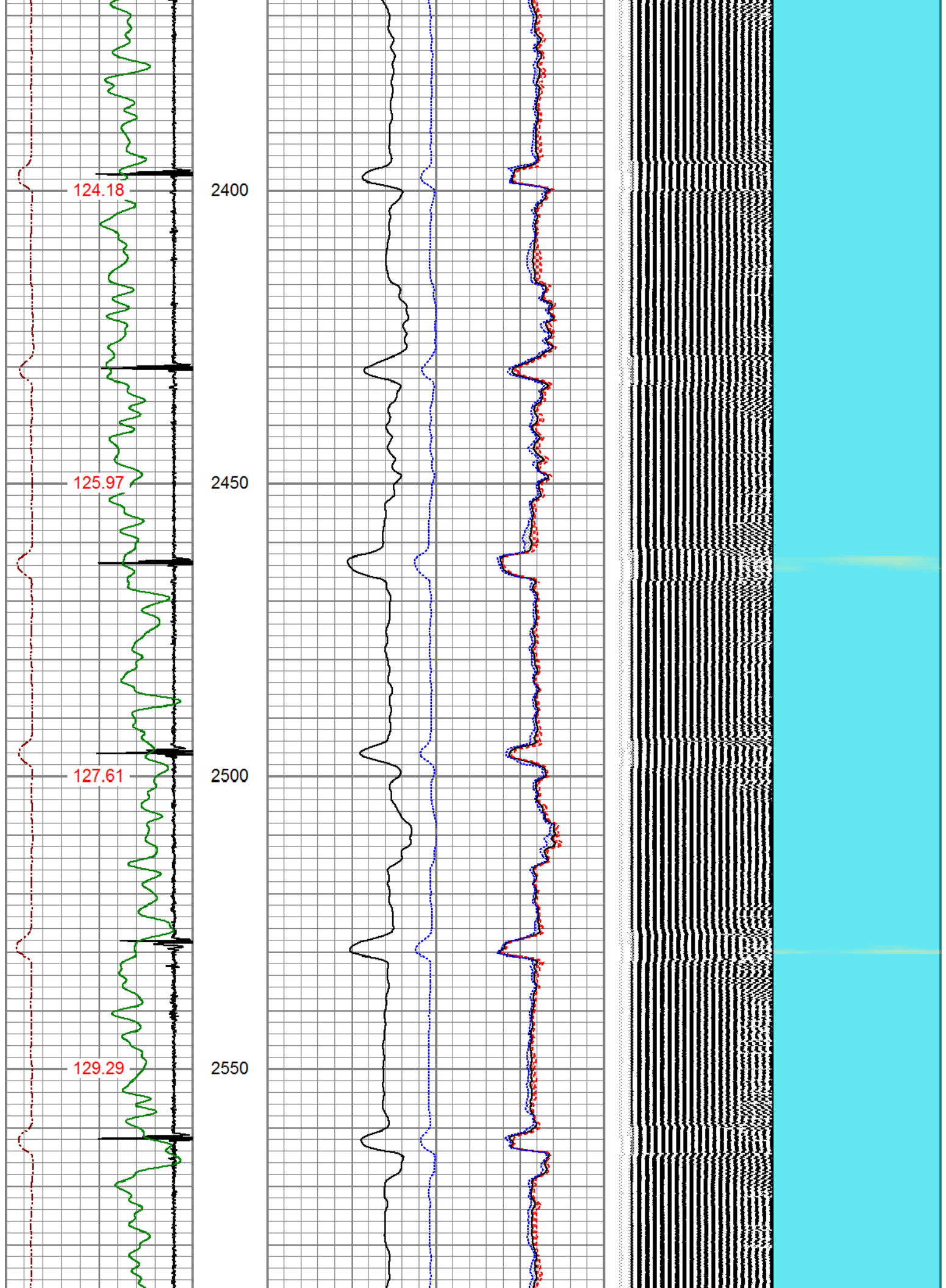


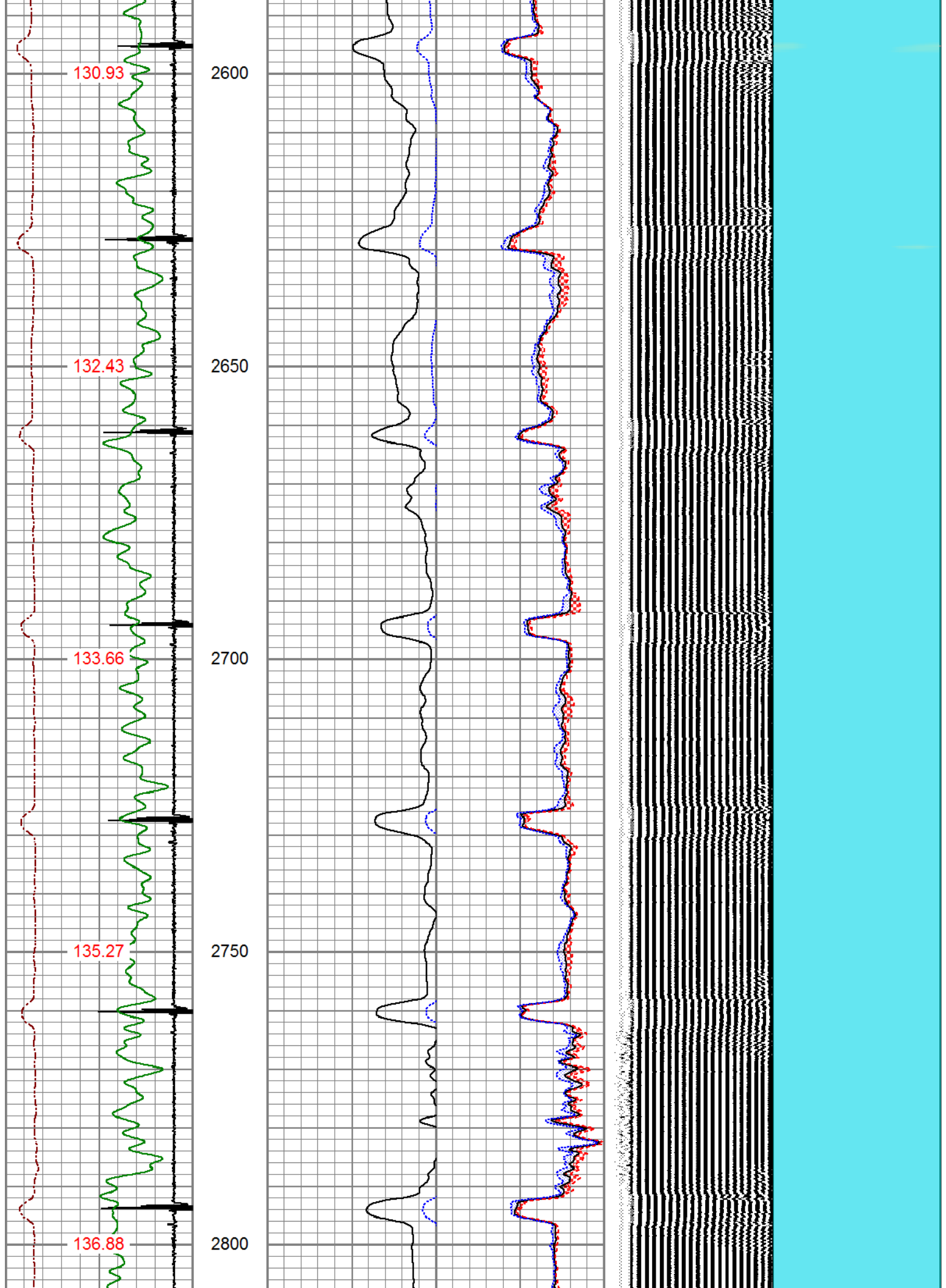


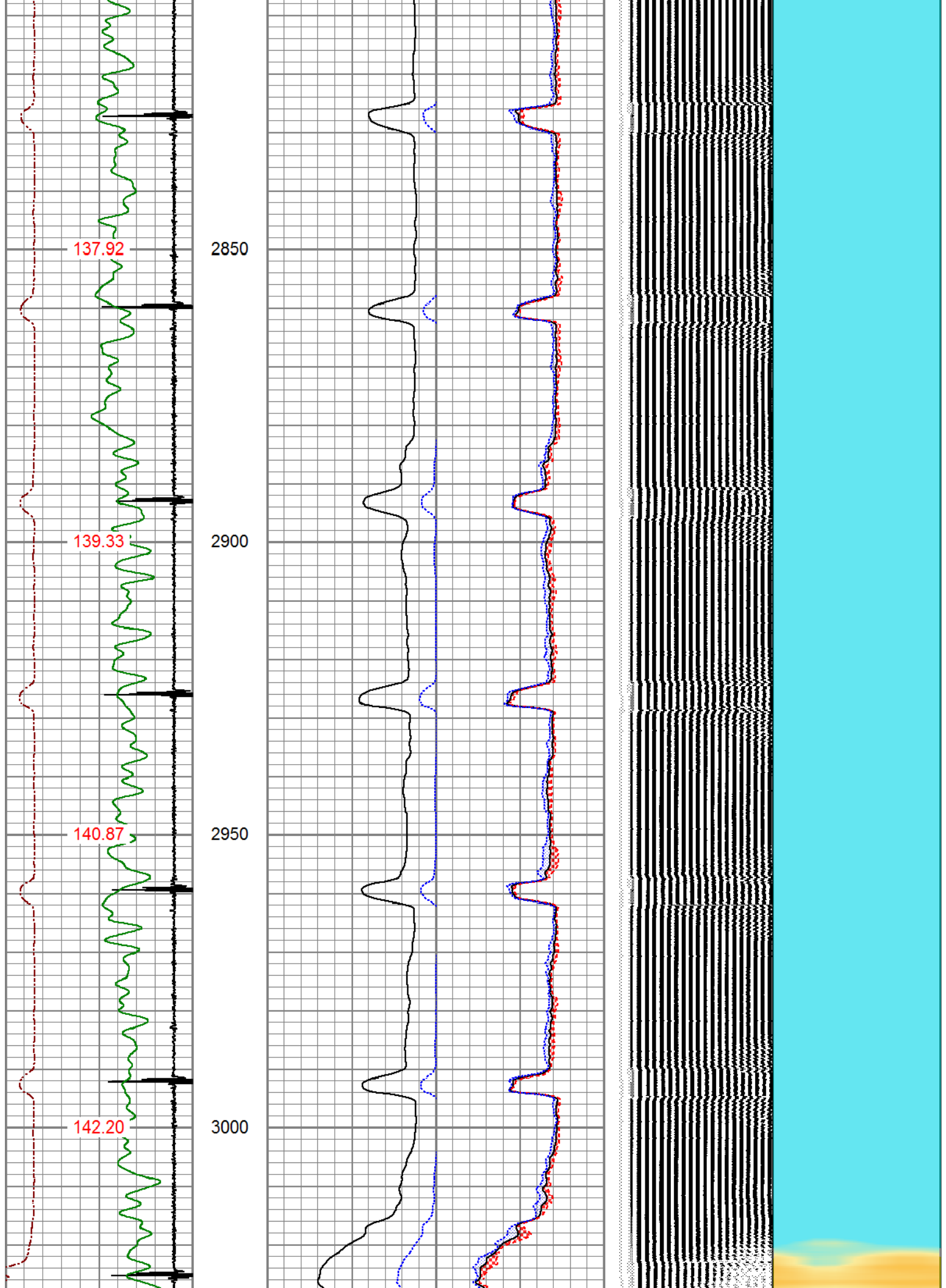


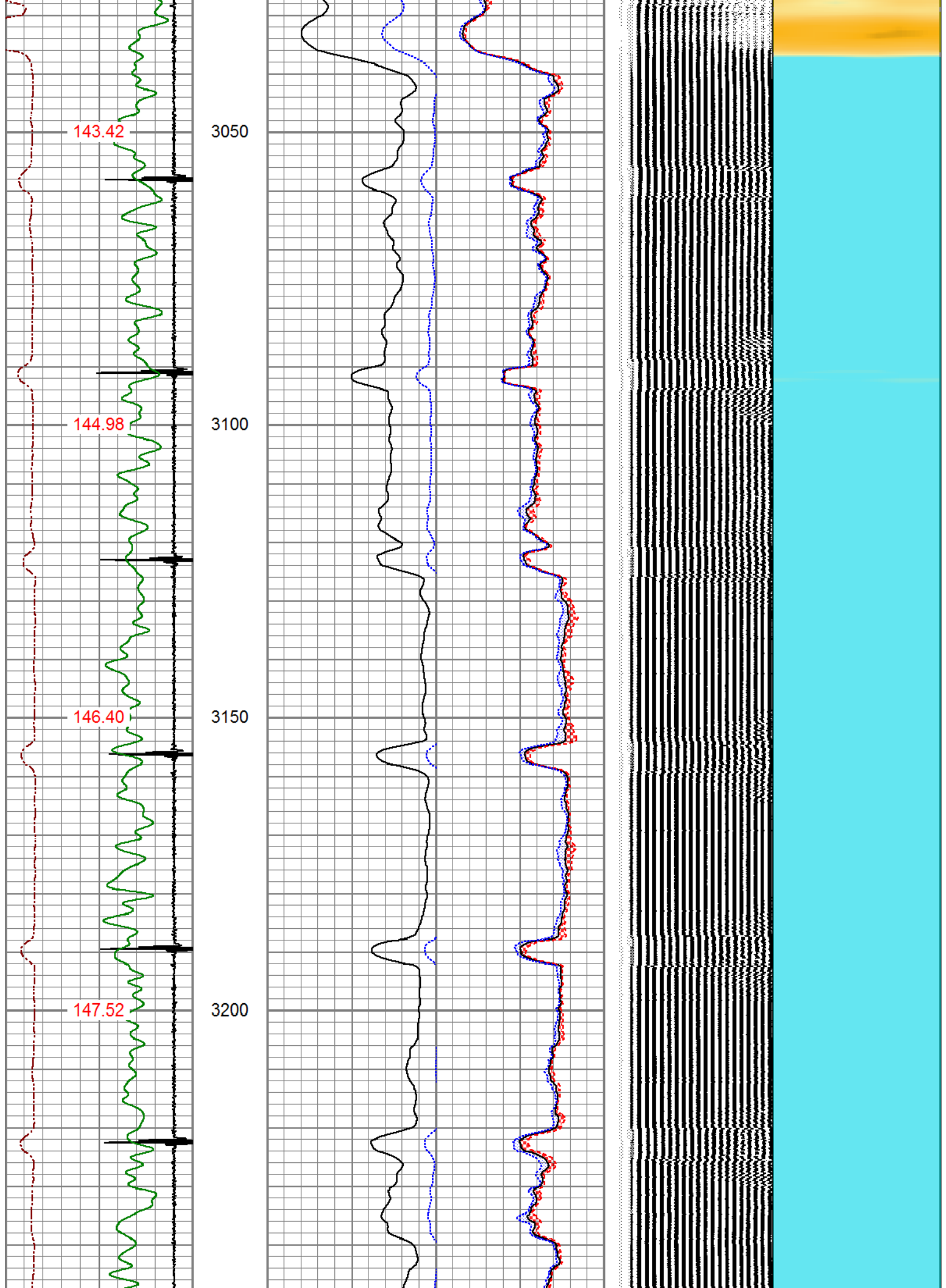


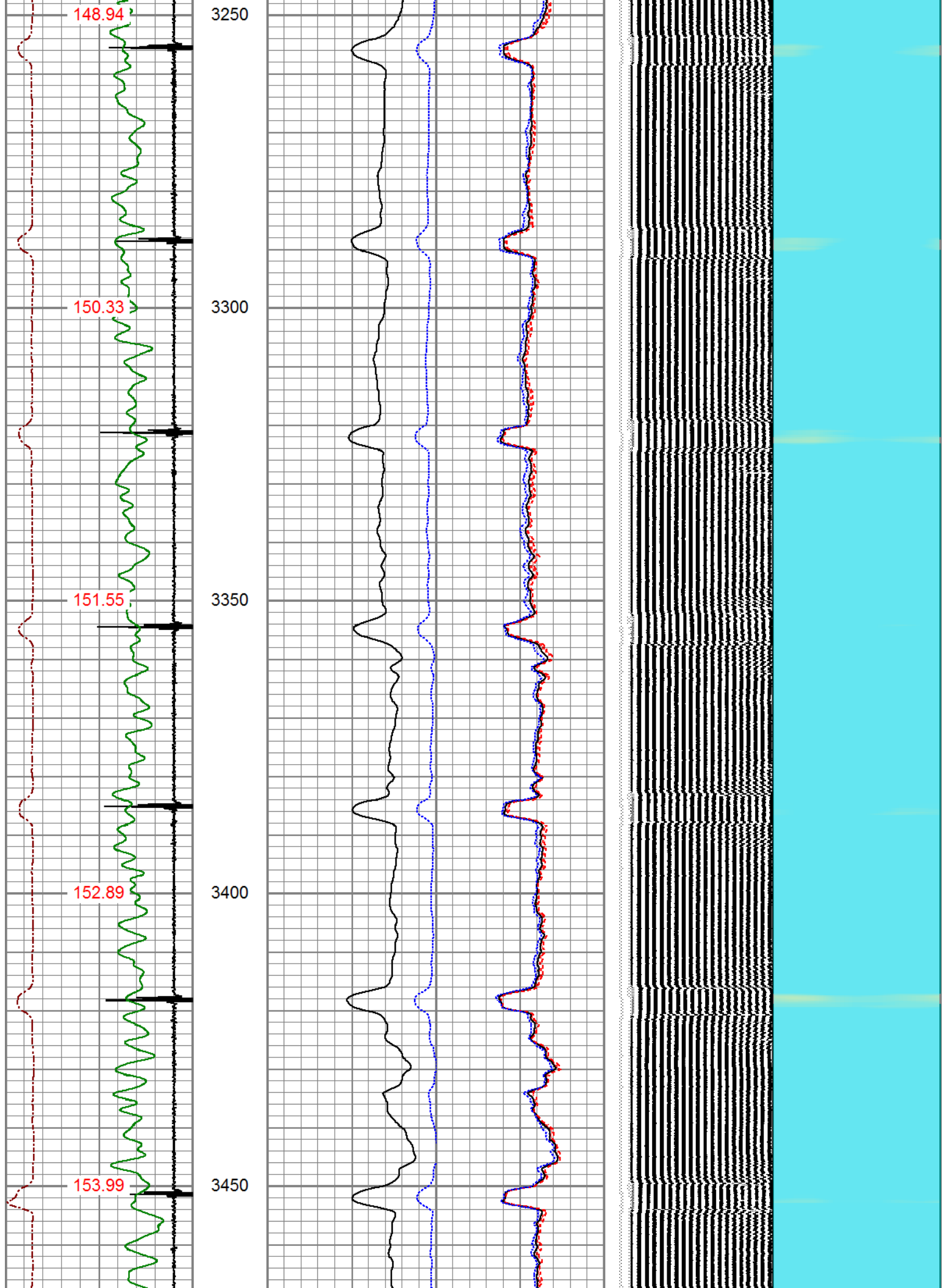


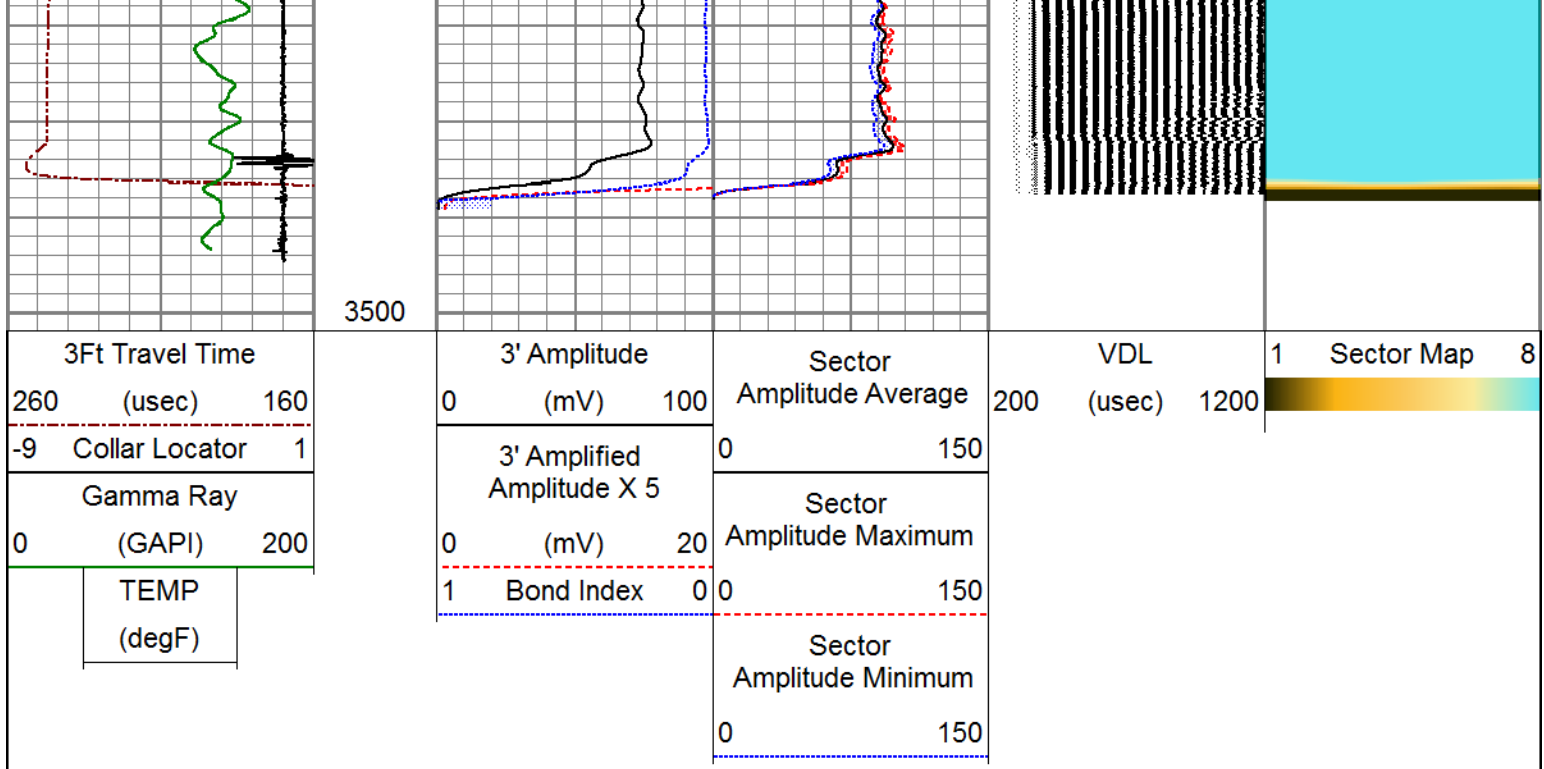
















MAIN LOG

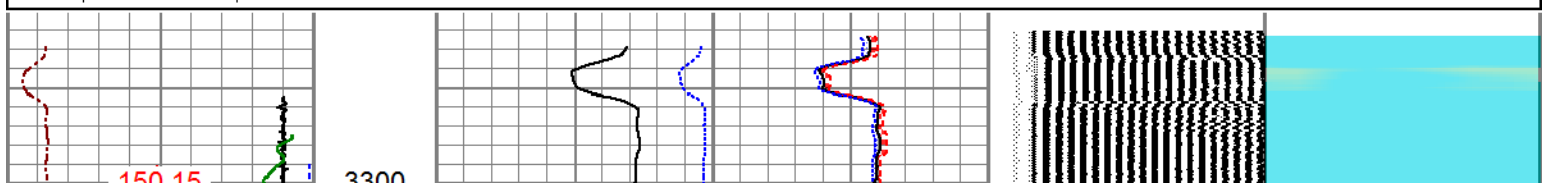
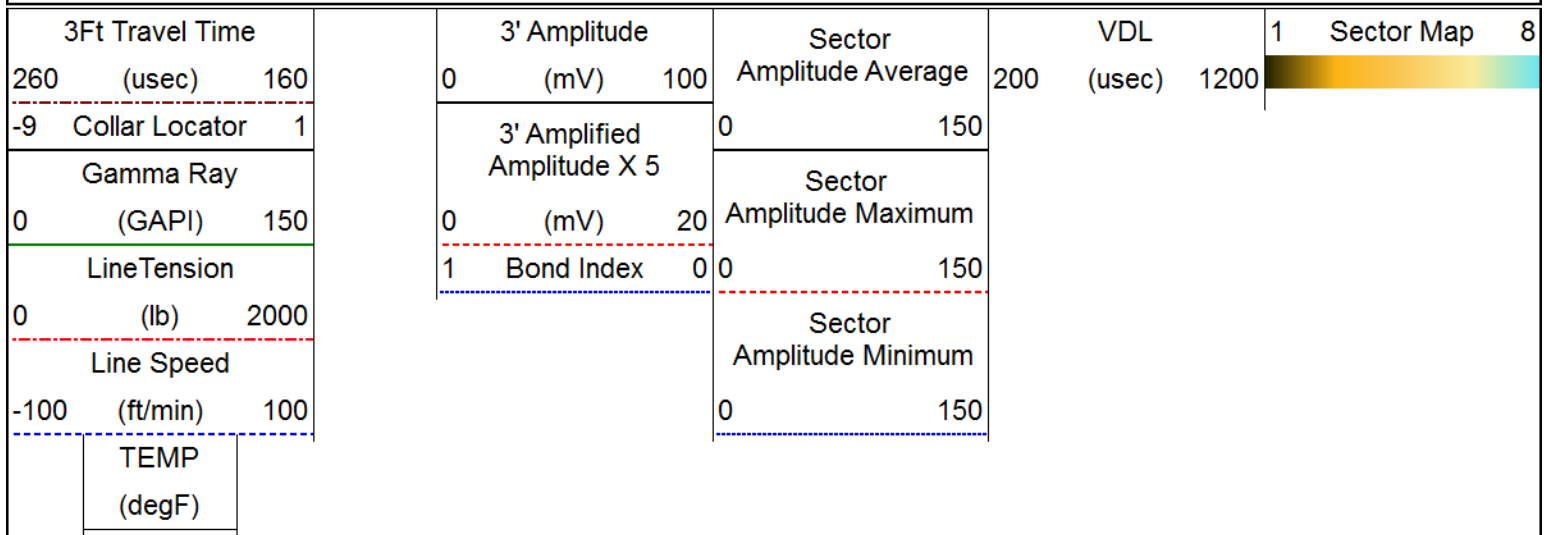
500 PSI APPLIED AT SURFACE

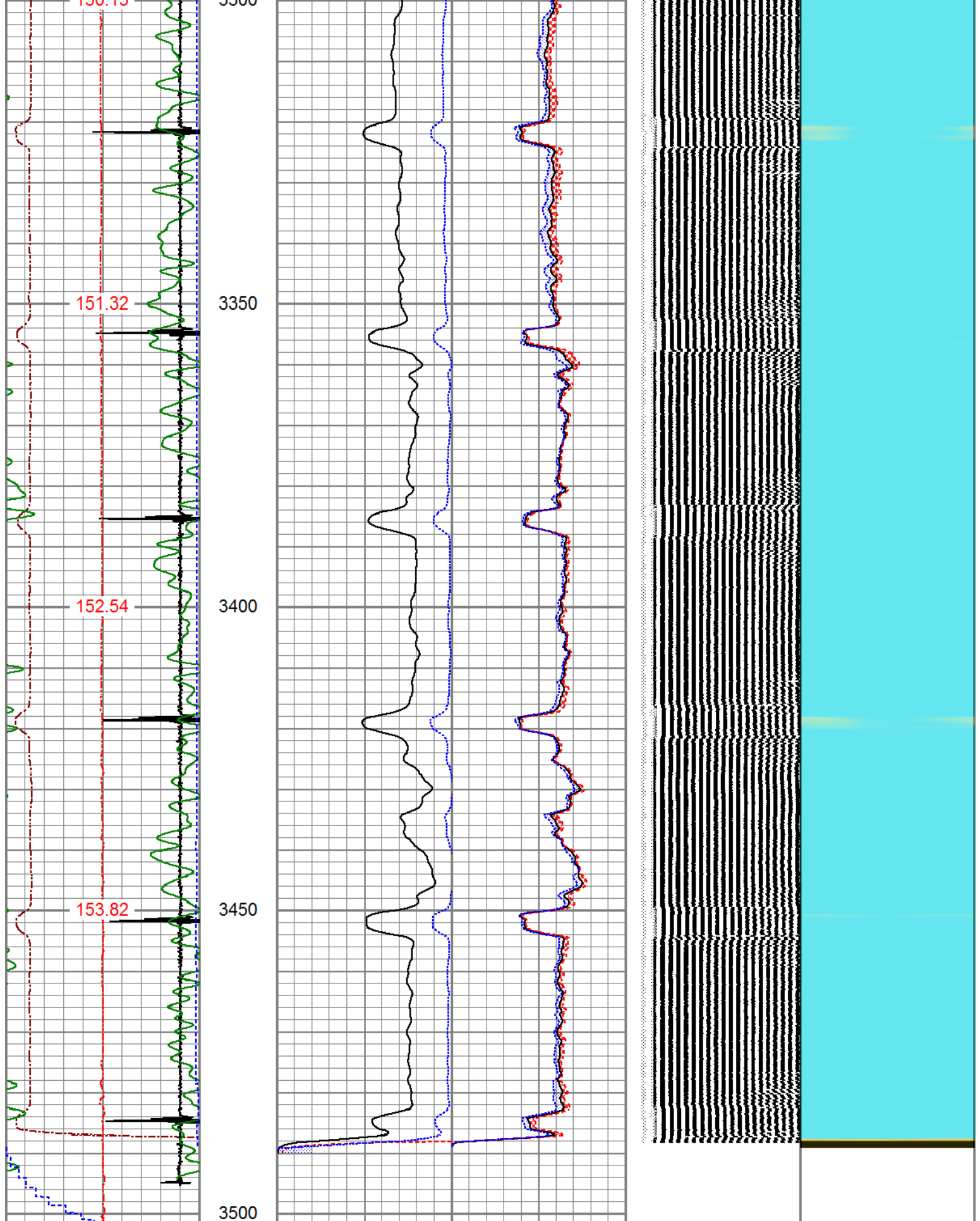



REPEAT SECTION

ZERO PSI APPLIED AT SURFACE

Database File	anadarko_sarchet_john_e_unit1_0512307389_11152019_scbl.db
Dataset Pathname	pass5
Presentation Format	pinr_scbl
Dataset Creation	Fri Nov 15 13:33:34 2019
Charted by	Depth in Feet scaled 1:240





3Ft Travel Time			3' Amplitude			Sector			VDL			1	Sector Map	8
260	(usec)	160	0	(mV)	100	Amplitude Average			200	(usec)	1200			
-9	Collar Locator	1	3' Amplified Amplitude X 5			0			150					
Gamma Ray														

0	(GAPI)	150	0	(mV)	20	Amplitude Maximum
LineTension			1	Bond Index	0	0 150
0	(lb)	2000	Sector			
Line Speed			Amplitude Minimum			
-100	(ft/min)	100	0 150			
TEMP						
(degF)						

Calibration Report	
Database File	anadarko_sarchet_john_e_unit1_0512307389_11152019_scbl.db
Dataset Pathname	pass5
Dataset Creation	Fri Nov 15 13:33:34 2019

Gamma Ray Calibration Report		
Serial Number:	140210	
Tool Model:	275 Probe GCT	
Performed:	(Not Performed)	
Calibrator Value:	1.0	GAPI
Background Reading:	0.0	cps
Calibrator Reading:	1.0	cps
Sensitivity:	1.0000	GAPI/cps

Segmented Cement Bond Log Calibration Report		
Serial Number:	FW1411-67	
Tool Model:	RBL-DCT	
Calibration Casing Diameter:	4.500	in
Calibration Depth:	2099.136	ft

Master Calibration, performed Fri Nov 15 13:28:13 2019:						
	Raw (v)		Calibrated (mv)		Results	
	Zero	Cal	Zero	Cal	Gain	Offset
3'	0.001	1.165	0.700	81.196	69.173	0.611
CAL	1.500	1.499				
5'	0.001	1.152	0.700	81.196	69.931	0.617
SUM						
S1	-0.008	1.227	0.000	100.000	80.979	0.614
S2	0.001	1.288	0.000	100.000	77.703	-0.116
S3	0.001	1.240	0.000	100.000	80.744	-0.111
S4	0.001	1.216	0.000	100.000	82.306	-0.112
S5	0.001	1.218	0.000	100.000	82.171	-0.114
S6	0.001	1.193	0.000	100.000	83.896	-0.112
S7	0.002	1.188	0.000	100.000	84.295	-0.131
S8	0.001	1.182	0.000	100.000	84.671	-0.118

Air Zero Calibration, performed Fri Nov 15 12:47:35 2019:		
Raw (v)	Calibrated (v)	Results
Zero	Zero	Offset

3'	0.000	0.000	0.000
5'	0.000	0.000	0.000
SUM			
S1	0.000	0.000	0.000
S2	0.000	0.000	0.000
S3	0.000	0.000	0.000
S4	0.000	0.000	0.000
S5	0.000	0.000	0.000
S6	0.000	0.000	0.000
S7	0.000	0.000	0.000
S8	0.000	0.000	0.000

Temperature Calibration Report

Serial Number: FW1411-67
Tool Model: RBL-DCT
Performed: (Not Performed)

	Reference	Reading
--	-----------	---------

Low Reference:	0.00 degF	0.00 degF
High Reference:	1.00 degF	1.00 degF

Gain: 1.00
Offset: 0.00
Delta Spacing 1



Company	ANADARKO PETROLEUM CORP.
Well	SARCHET JOHN E UNIT 1
Field	WATTENBERG
County	WELD
State	COLORADO