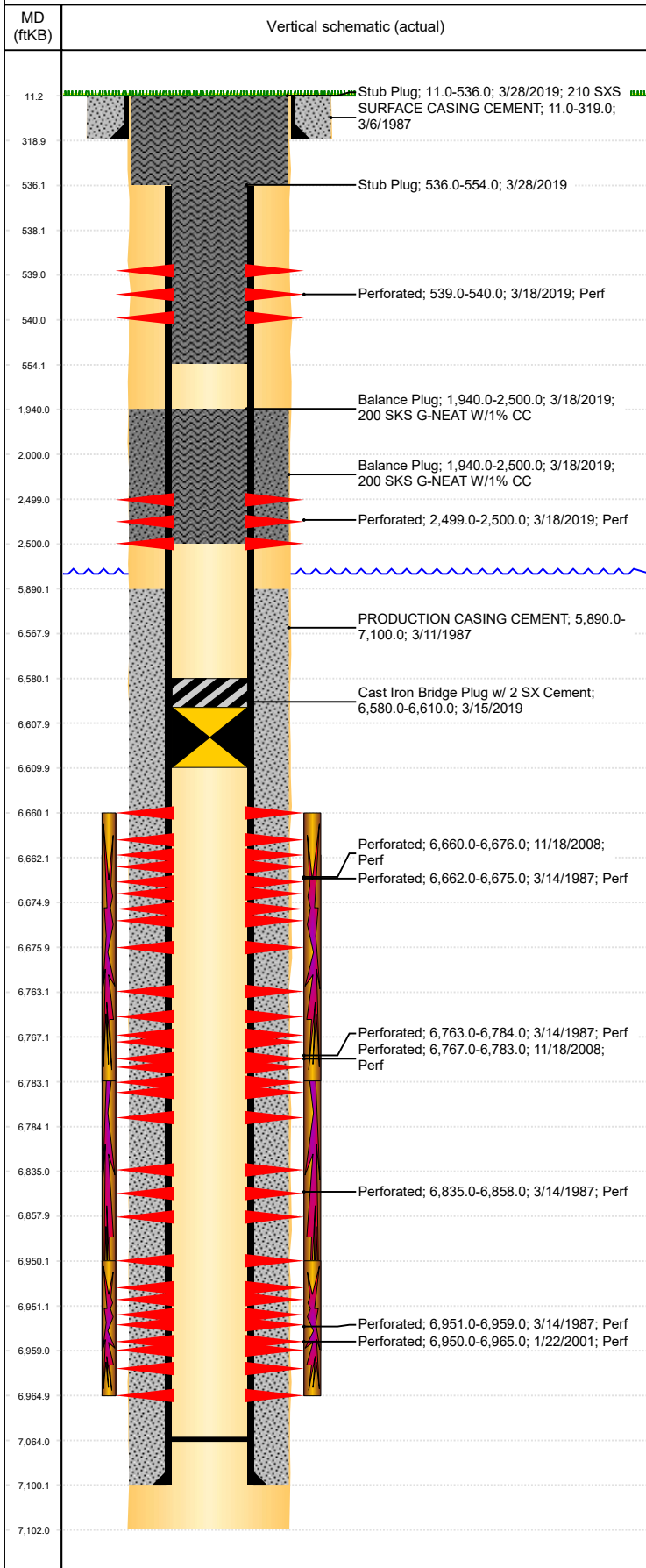


**Well Name: OCOMA B29-12**

VERTICAL, ORIGINAL HOLE, 11/11/2019 8:41:32 AM



Well Header									
API 05-123-13392		Business Unit DJ BASIN			District 15		Well Config VERTICAL		
KB - GL / MSL (ft... 11.00		Spud Date 3/6/1987		P & A Date 3/28/2019		Well Production Status PA			SoRT Yes
Comment HIGH PRESSURE LEAK BETWEEN 5853' & 5890' CASING HELD @ 1000#. TD DISCREPANCY: STATE- 7095', LOGGER DEPTH- 7102'.									
Surface Location (Congressional)									
Qtr 3 NW	Qtr 4 SW	Section 29	Twnshp 5	Twnsh... N	Range 64	Rng E/... W	Actual Latitude (°) 40.36823562		Actual Longitude (°) -104.58075911
Wellbore Sections									
Section Des			Size (in)			Act Top, MD (ftKB)		Act Btm, MD (ftKB)	
SURFACE			12 1/4			11		319	
PRODUCTION			7 7/8			319		7,102	
Casing Strings									
Csg Des		Run Date		OD (in)	Wt/Len (lb/ft)	Grade	Top, MD (ftKB)	MD (ftKB)	
Surface		3/6/1987		8 5/8	24.00		11.0	319.0	
Production		3/11/1987		4 1/2	15.10		11.0	7,100.0	
Cement									
Des				Start Date		Top (ftKB)		Btm (ftKB)	
SURFACE CASING CEMENT				3/6/1987		11.0		319.0	
PRODUCTION CASING CEMENT				3/11/1987		5,890.0		7,100.0	
Balance Plug				3/18/2019		1,940.0		2,500.0	
Balance Plug				3/18/2019		1,940.0		2,500.0	
Stub Plug				3/28/2019		536.0		554.0	
Stub Plug				3/28/2019		11.0		536.0	
Zone Statuses									
Zone Name	Status Date	Status	Fluid Type	Job				Prod Method	
NIOBRARA	2/1/2010	PR	Water	PLUG AND ABANDON, 3/11/2019 06:00				Flowing	
NIOBRARA	3/15/2019	P&A	Water					Flowing	
CODELL	2/1/2010	PR	Water	PLUG AND ABANDON, 3/11/2019 06:00					
CODELL	3/15/2019	P&A	Water						
Perforation Data									
Linked Zone	Bnch/Stg	Entered Shot Total	Top (ftKB)		Btm (ftKB)		Date		
NIOBRARA, ORIGINAL HOLE	A	6	539.00		540.00		3/18/2019		
		6	2,499.00		2,500.00		3/18/2019		
		64	6,660.00		6,676.00		11/18/2008		
	A	3	6,662.00		6,675.00		3/14/1987		
	B	5	6,763.00		6,784.00		3/14/1987		
	B	64	6,767.00		6,783.00		11/18/2008		
	C	2	6,835.00		6,858.00		3/14/1987		
		60	6,950.00		6,965.00		1/22/2001		
		5	6,951.00		6,959.00		3/14/1987		
Stimulation Intervals									
Zone			Start Date		Top (ftKB)		Btm (ftKB)		
NIOBRARA, ORIGINAL HOLE			12/11/2008		6,660.0		6,783.0		
CODELL, ORIGINAL HOLE			3/16/1987		6,662.0		6,959.0		
CODELL, ORIGINAL HOLE			1/24/2001		6,950.0		6,965.0		
Other In Hole									
Run Date		Des				OD (in)	Top (ftKB)	Btm (ftKB)	
3/15/2019		Cast Iron Bridge Plug w/ 2 SX Cement				3.826	6,580.0	6,610.0	
Logs									
Date		Type				Top, MD (ftKB)		Btm, MD (ftKB)	
3/10/1987		Compensated Density				3,550.0		7,060.0	
3/10/1987		Induction				319.0		7,100.0	
3/14/1987		Cement Bond				5,700.0		7,016.0	
6/29/2016		GYRO				0.0		6,900.0	
Plug Back Total Depths									
Date		Type		Com				Depth (ftKB)	
3/11/2008								7,082.0	
12/30/2008		FILL		STOPPED HERE TUBING PLUGGING UP.				7,064.0	