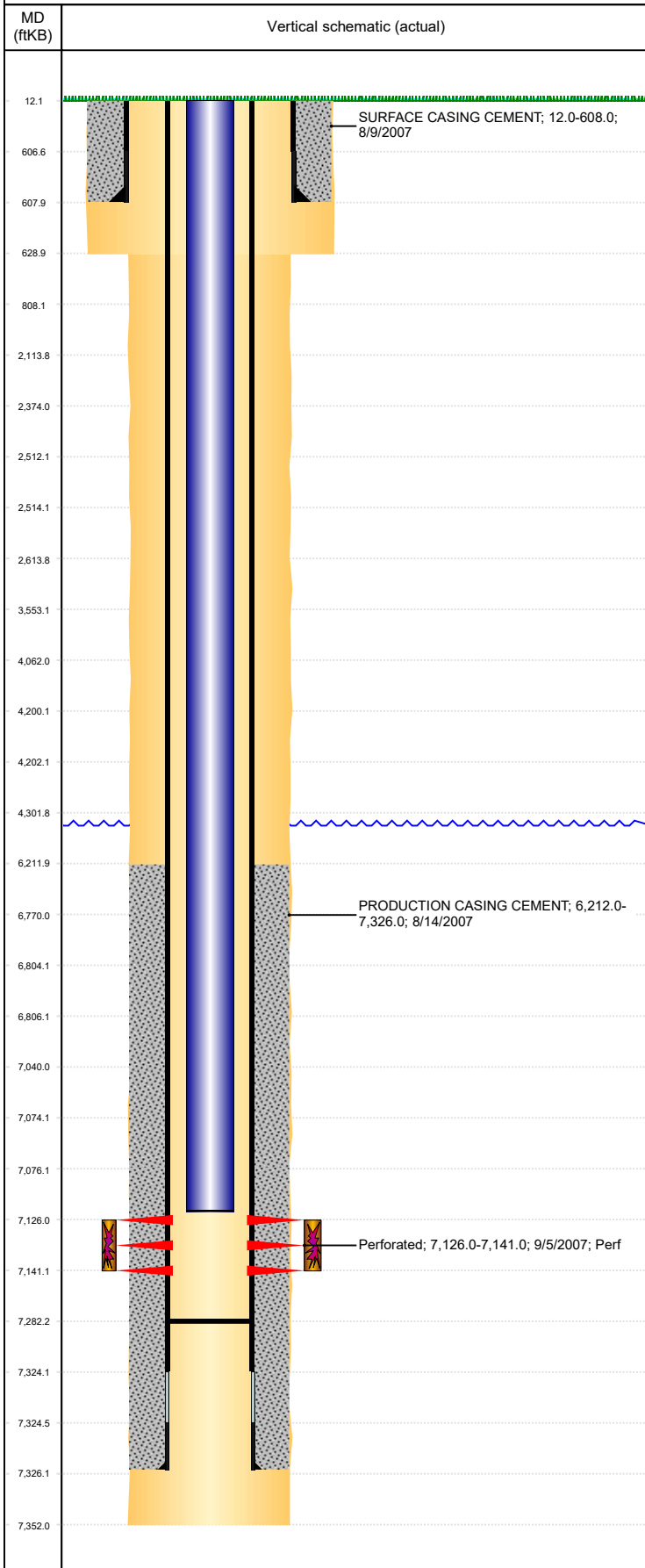


Well Name: IRVINE 2-15

VERTICAL, ORIGINAL HOLE, 11/14/2019 2:46:22 PM



Well Header									
API 05-123-26064		Business Unit DJ BASIN			District 15		Well Config VERTICAL		
KB - GL / MSL (ft... 12.00		Spud Date 8/8/2007		P & A Date		Well Production Status PR			SoRT No
Comment SURF CSG DEPTH DISCREPANCY: ST HAS 622' (608' CROSSED OUT), DRL RPTS 608'.									
Surface Location (Congressional)									
Qtr 3 SW	Qtr 4 NE	Section 2	Twntshp 6	Twntsh... N	Range 65	Rng E/... W	Actual Latitude (°) 40.51982000	Actual Longitude (°) -104.62544000	
Wellbore Sections									
Section Des			Size (in)			Act Top, MD (ftKB)		Act Btm, MD (ftKB)	
SURFACE			12 1/4			12		629	
PRODUCTION			7 7/8			629		7,352	
Casing Strings									
Csg Des		Run Date		OD (in)	Wt/Len (lb/ft)	Grade	Top, MD (ftKB)	MD (ftKB)	
Surface		8/9/2007		8 5/8	24.00		12.0	608.0	
Production		8/14/2007		4 1/2	11.60	N-80	12.0	7,326.0	
Cement									
Des					Start Date		Top (ftKB)		Btm (ftKB)
SURFACE CASING CEMENT					8/9/2007		12.0		608.0
PRODUCTION CASING CEMENT					8/14/2007		6,212.0		7,326.0
Zone Statuses									
Zone Name		Status Date	Status	Fluid Type	Job			Prod Method	
CODELL		10/11/2011	PR	Water				Flowing	
CODELL		1/5/2016	PR						
Perforation Data									
Linked Zone		Bnch/Stg	Entered Shot Total	Top (ftKB)		Btm (ftKB)		Date	
CODELL, ORIGINAL HOLE			60	7,126.00		7,141.00		9/5/2007	
Stimulation Intervals									
Zone				Start Date		Top (ftKB)		Btm (ftKB)	
CODELL, ORIGINAL HOLE				9/8/2007		7,126.0		7,141.0	
Other In Hole									
Run Date		Des				OD (in)	Top (ftKB)	Btm (ftKB)	
12/6/2018		Plunger Lift				1 7/8			
Logs									
Date		Type				Top, MD (ftKB)		Btm, MD (ftKB)	
8/13/2007		COMPENSATED DENSITY				3,690.0		7,327.0	
8/13/2007		INDUCTION				622.0		7,347.0	
9/30/2007		CBL/CCL/GR				6,100.0		7,280.0	
12/18/2013		GYRO				0.0		7,100.0	
Plug Back Total Depths									
Date		Type		Com				Depth (ftKB)	
9/21/2007		FILL		CLEAN OUT TO LAND TUBING				7,302.0	
9/30/2007		FILL		DEPTH LOGGER ON CBL -- DATE ON LOG IS 9/31/2007 WHI...				7,282.0	