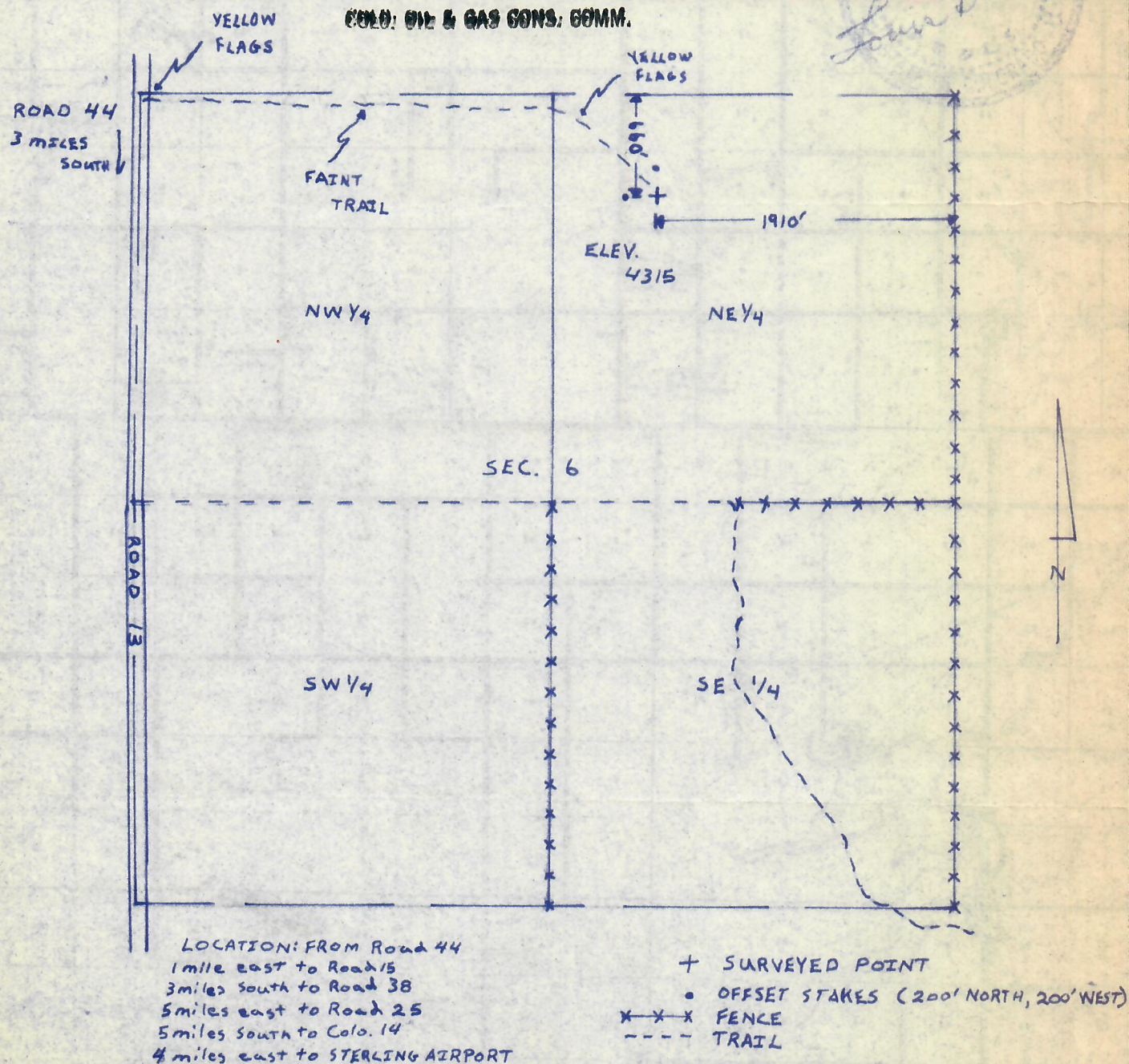




00264674

I hereby certify that the accompanying plat is an accurate representation of a correct survey showing the location of a proposed well. This location may be described as a point 660 feet from the north line and 1910 feet from the east line of Section 6, T9N, R54W of the 6th P.M., Logan County, Colorado.  
The surface elevation at this point is 4315 feet above mean sea level.

**RECEIVED****MAR 4 1981***Lois B. Harmon***HARMON  
ENGINEERING  
SERVICES**

#1 CEDAR CREEK RANCH

NW 1/4 NE 1/4 SEC. 6,  
T9N, R54WALEXANDER AND AMBROSE  
OIL CORP.

25 FEBRUARY 1981

L.A.

LOGAN COUNTY, COLORADO

6



