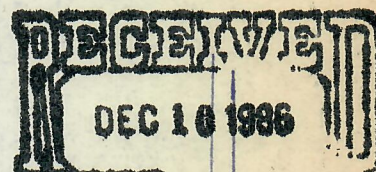
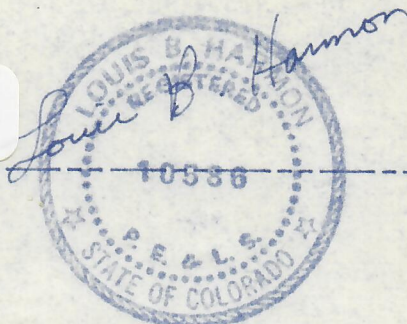


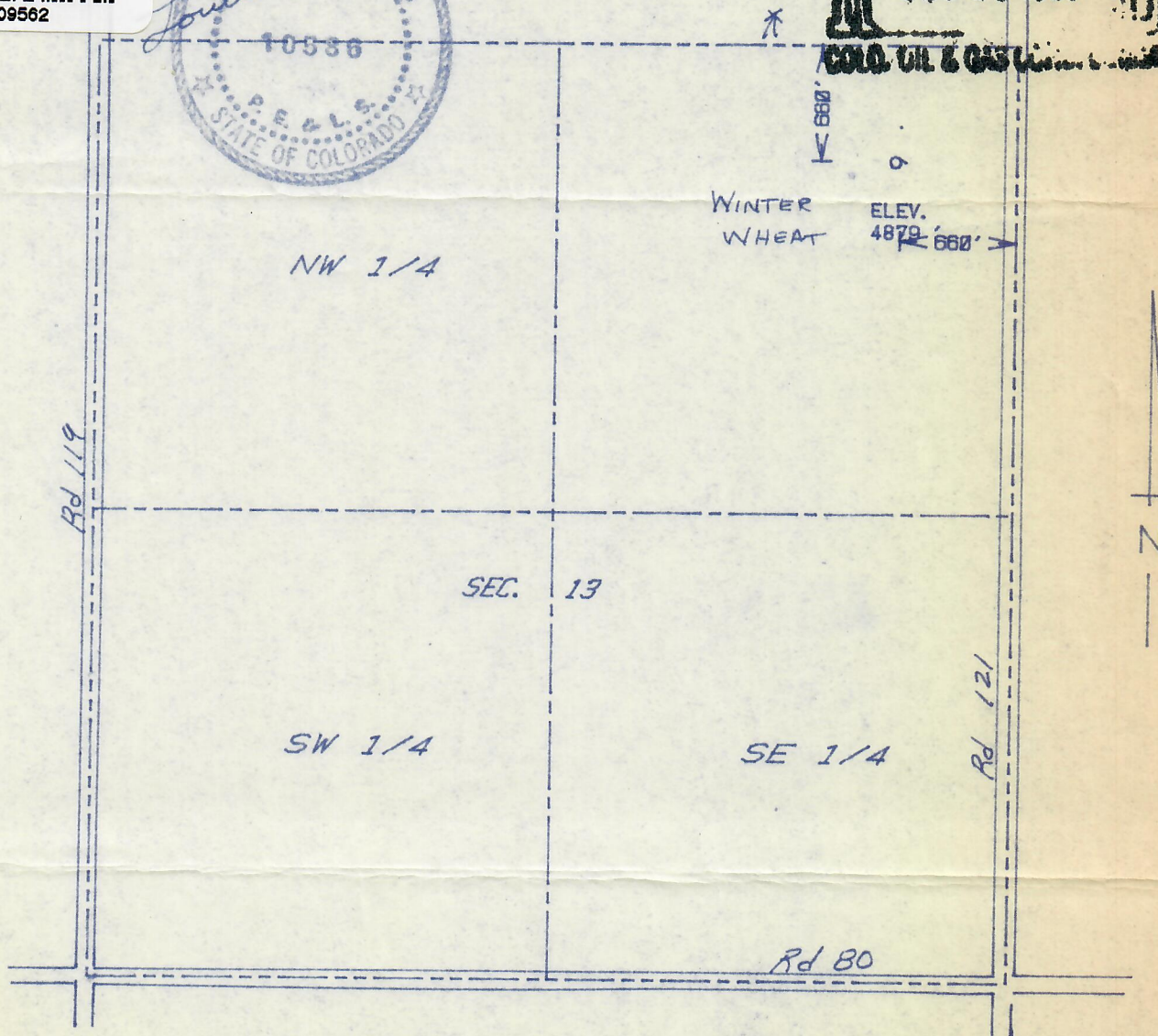
THE ACCOMPANYING PLAT IS AN ACCURATE REPRESENTATION SHOWING THE LOCATION OF A PROPOSED WELL. THIS LOCATION MAY BE DESCRIBED AS A POINT 660 FEET SOUTH OF THE NORTH LINE, AND 660 FEET WEST OF THE EAST LINE OF SECTION 13, TOWNSHIP 7 N RANGE 59 W OF THE 6th P.M., WELD COUNTY, COLORADO. THE SURFACE ELEVATION AT THIS POINT IS 4879 FEET m. s. l.



00209562



COLD OIL & GAS



SCALE - 1"=1000'

- SURVEYED POINT
- REFERENCE STAKE (200 'N, 0 'E)
- NE 1/4 SEC. 13 , T 7 N, R 59 W

HARMON
ENGINEERING
SERVICES

LIND #1

ENERGY MINERALS CORP.

WELD CO., COLORADO

21 NOV 1986