



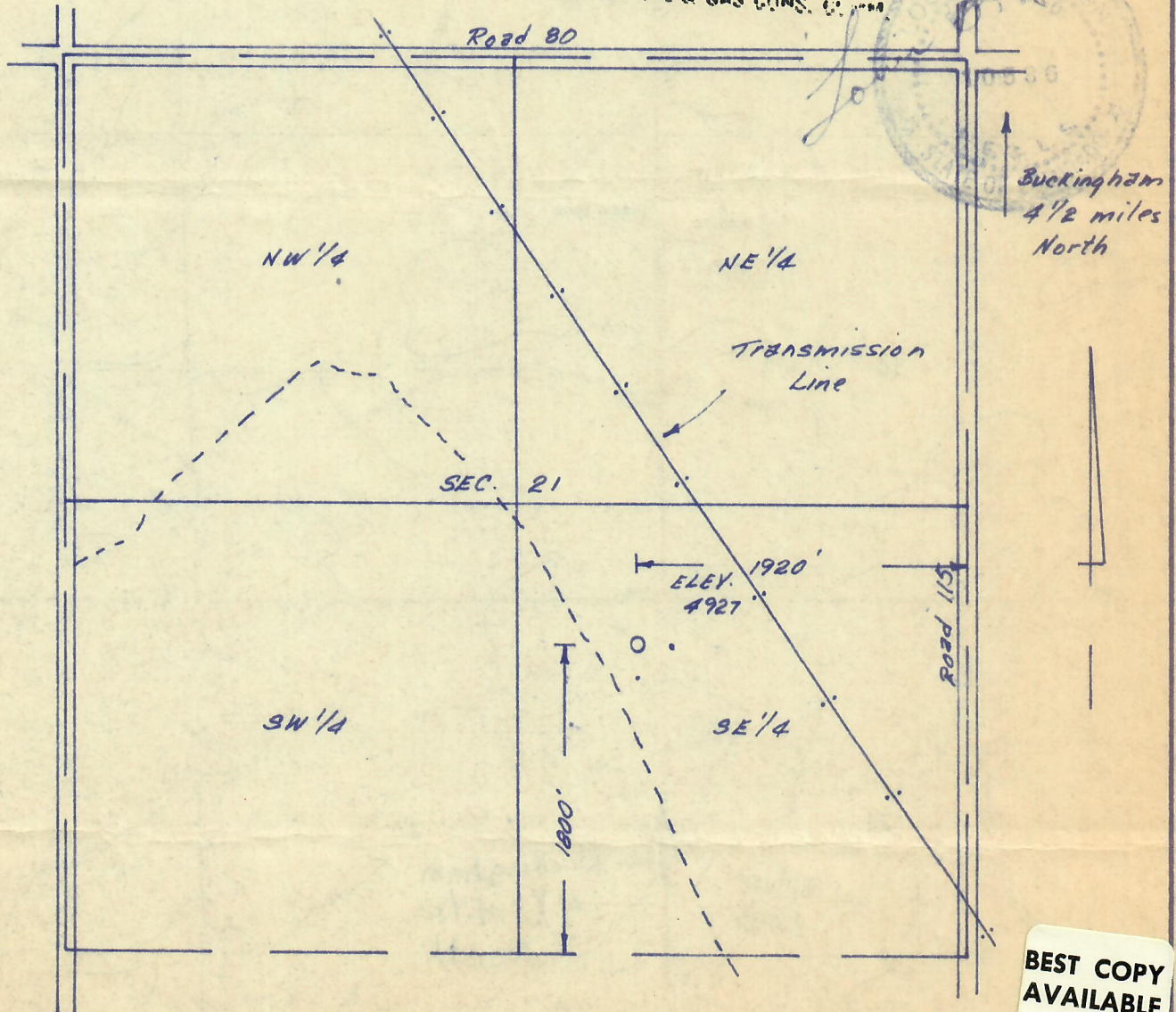
00199992

I hereby certify that the accompanying plat is an accurate representation of a correct survey showing the location of a proposed well. This location may be described as a point 1600 feet North of the South line and 1920 feet West of the East line of Section 21, T7N, R59W of the 6th PM, Weld County, Colorado.

The surface elevation at this point is 4927 feet above msl.

RECEIVED**AUG 26 1982**

COLO. OIL & GAS CONS. COM.



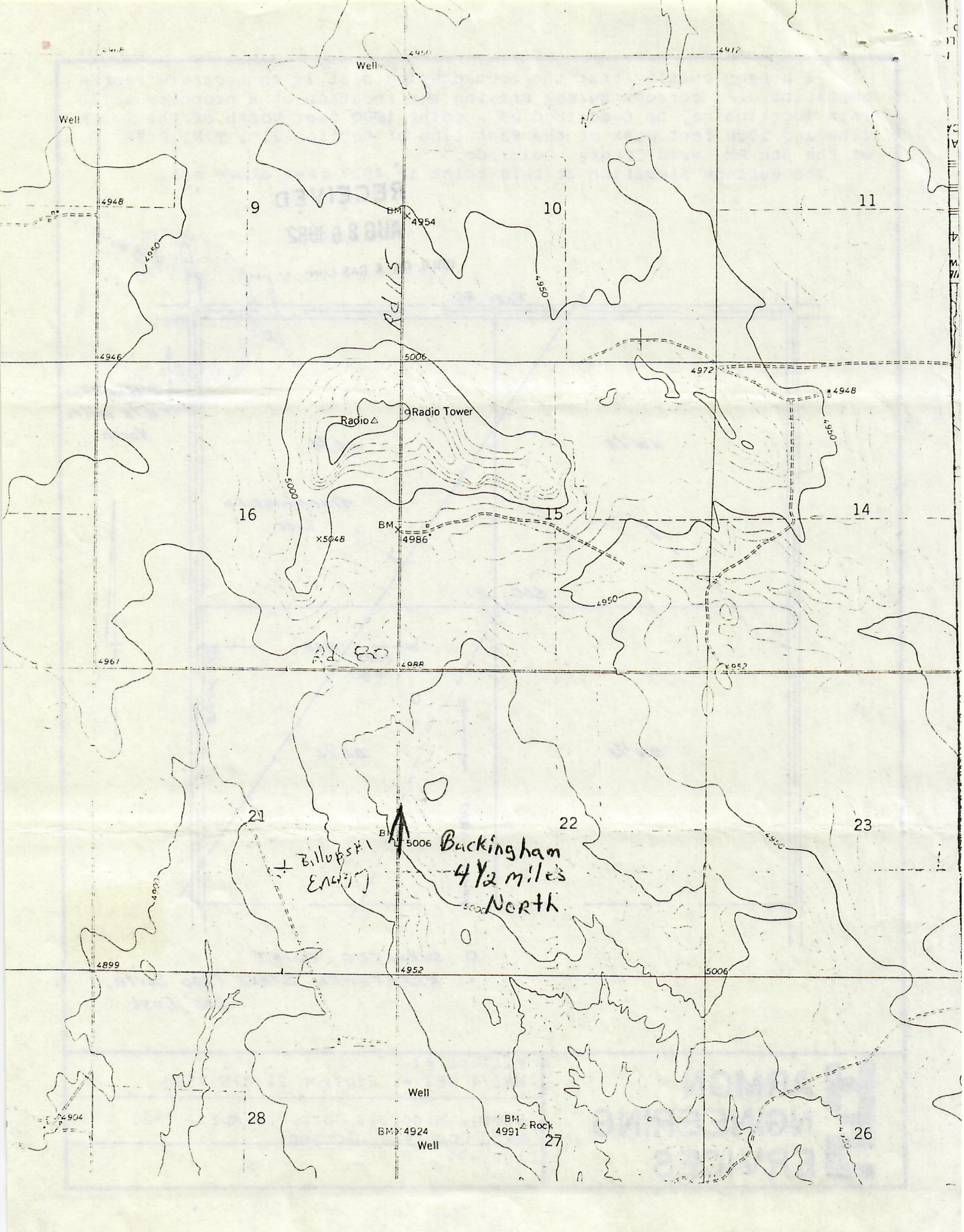
- SURVEYED POINT
- REFERENCE STAKE (200' South, 200' East)

BEST COPY AVAILABLE**ARMON
ENGINEERING
SERVICES**

Billups #1
NW1/4 SE1/4, Section 21 T7N R59W

Energy Minerals Corp. 29 April 1982
Weld County, Colorado
1015-37

123-10790



Well

Well

4948

9

10

11

4946

4940

4951

4912

BM X 4954

4950

5006

4972

4948

4950

16

X 5048

BM

4986

15

4950

14

4961

4988

4952

21

BM

5006

22

23

Billupski Encl

Buckingham
4 1/2 miles
North

4950

4899

4952

5006

28

Well

BM

4924

Well

BM

4991

Rock

27

26

4904