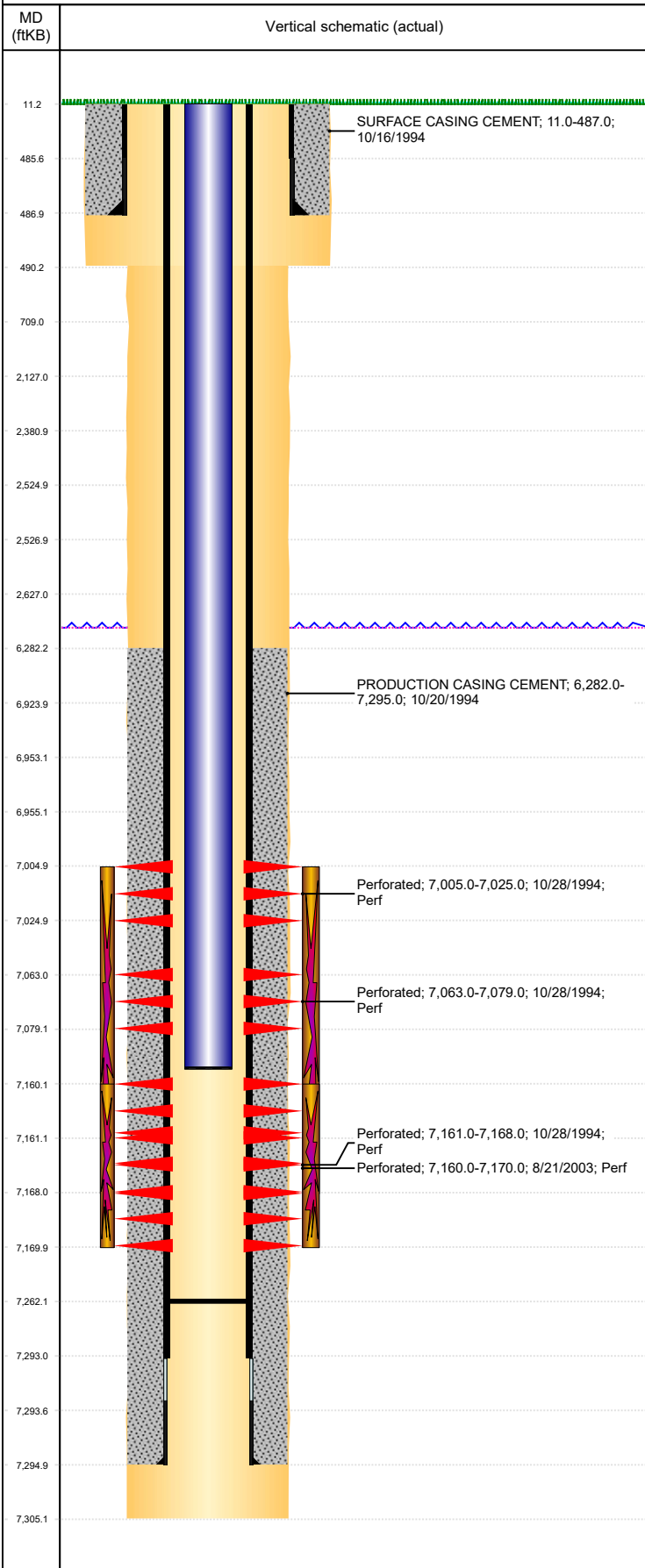


**Well Name: BROWN 03-14**

VERTICAL, ORIGINAL HOLE, 11/14/2019 11:03:50 AM



Well Header									
API 05-123-18621			Business Unit DJ BASIN			District 15		Well Config VERTICAL	
KB - GL / MSL (ft... 11.00		Spud Date 10/15/1994		P & A Date		Well Production Status PR			SoRT No
Comment LIMITED ENTRY ORIGINAL FRAC. DISCREPANCY: TD DEPTH- ST 7275', DRL RPT 7305', ALSO PROD CSG SET DEPTH IS 7295'. STATE SHOWS SHUT IN SINCE OCT 2017. FIELD OPS NOTICE- FLOWLINES ABANDONED PER RULE 1103, RCVD 6/26/17.									
Surface Location (Congressional)									
Qtr 3 SE	Qtr 4 NE	Section 3	Twnshp 6	Twnsh... N	Range 65	Rng E/... W	Actual Latitude (°) 40.51817000		Actual Longitude (°) -104.64165000
Wellbore Sections									
Section Des			Size (in)			Act Top, MD (ftKB)		Act Btm, MD (ftKB)	
SURFACE			12 1/4			11		490	
PRODUCTION			7 7/8			490		7,305	
Casing Strings									
Csg Des			Run Date		OD (in)	Wt/Len (lb/ft)	Grade	Top, MD (ftKB)	MD (ftKB)
Surface			10/16/1994		8 5/8	24.00		11.0	487.0
Production			10/20/1994		4 1/2	15.10	N-80	11.0	7,295.0
Cement									
Des					Start Date		Top (ftKB)		Btm (ftKB)
SURFACE CASING CEMENT					10/16/1994		11.0		487.0
PRODUCTION CASING CEMENT					10/20/1994		6,282.0		7,295.0
Zone Statuses									
Zone Name		Status Date	Status	Fluid Type	Job				Prod Method
CODELL		9/7/2003	PR	Water	RE-FRAC, 8/20/2003 00:00				Flowing
CODELL		7/17/2015	PR		DRILLING/COMPLETION - ORIGINAL, 10/15/199...				
NIOBRARA		11/18/1994	PR	Water					Flowing
NIOBRARA		7/17/2015	PR						
NIOBRARA-CO...		8/27/2015	SI						
NIOBRARA-CO...		1/5/2016	PR						
Perforation Data									
Linked Zone			Bnch/Stg	Entered Shot Total	Top (ftKB)		Btm (ftKB)		Date
NIOBRARA, ORIGINAL HOLE			B	6	7,005.00		7,025.00		10/28/1994
NIOBRARA, ORIGINAL HOLE			C	4	7,063.00		7,079.00		10/28/1994
CODELL, ORIGINAL HOLE				40	7,160.00		7,170.00		8/21/2003
CODELL, ORIGINAL HOLE				6	7,161.00		7,168.00		10/28/1994
Stimulation Intervals									
Zone				Start Date			Top (ftKB)		Btm (ftKB)
NIOBRARA-CODELL, ORIGINAL HOLE				11/1/1994			7,005.0		7,168.0
CODELL, ORIGINAL HOLE				8/26/2003			7,160.0		7,170.0
Other In Hole									
Run Date		Des				OD (in)	Top (ftKB)		Btm (ftKB)
3/23/2019		Plunger Lift				1 7/8			
Logs									
Date		Type				Top, MD (ftKB)		Btm, MD (ftKB)	
10/19/1994		COMPENSATED DENSITY				450.0		7,325.0	
10/19/1994		INDUCTION				450.0		7,325.0	
10/24/1994		CEMENT BOND				6,175.0		7,246.0	
Plug Back Total Depths									
Date		Type		Com					Depth (ftKB)
10/24/1994		FILL		DEPTH LOGGER ON CBL					7,250.0
8/28/2003		FILL		CIRCULATE CLEAN AND LAND TUBING					7,262.0