

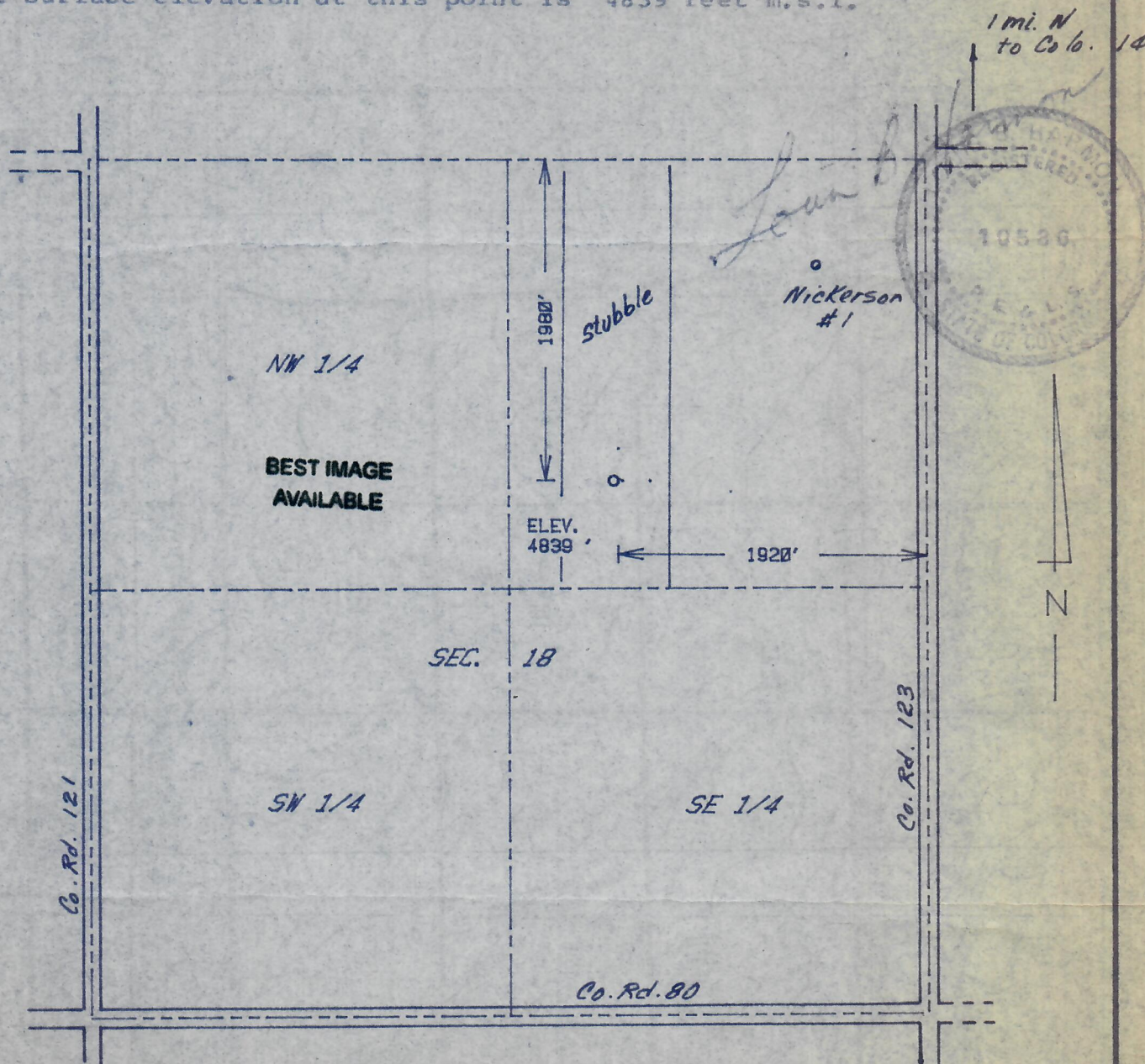


RECEIVED

NOV 7 1984

COLO. OIL &amp; GAS CONS. COMM.

The accompanying plat is an accurate representation of the location of a proposed well. This location may be described as a point 1980 feet south of the north line, and 1920 feet west of the east line of Section 18, Township 7 N Range 58 W of the 6th P.M., WELD County, COLORADO.  
The surface elevation at this point is 4839 feet m.s.l.



SCALE - 1"=1000'

- SURVEYED POINT
- REFERENCE STAKE ( 200 'N, 200 'E )
- NE 1/4 SEC. 18 , T 7 N, R 58 W

**HARMON**  
**ENGINEERING**  
**SERVICES**

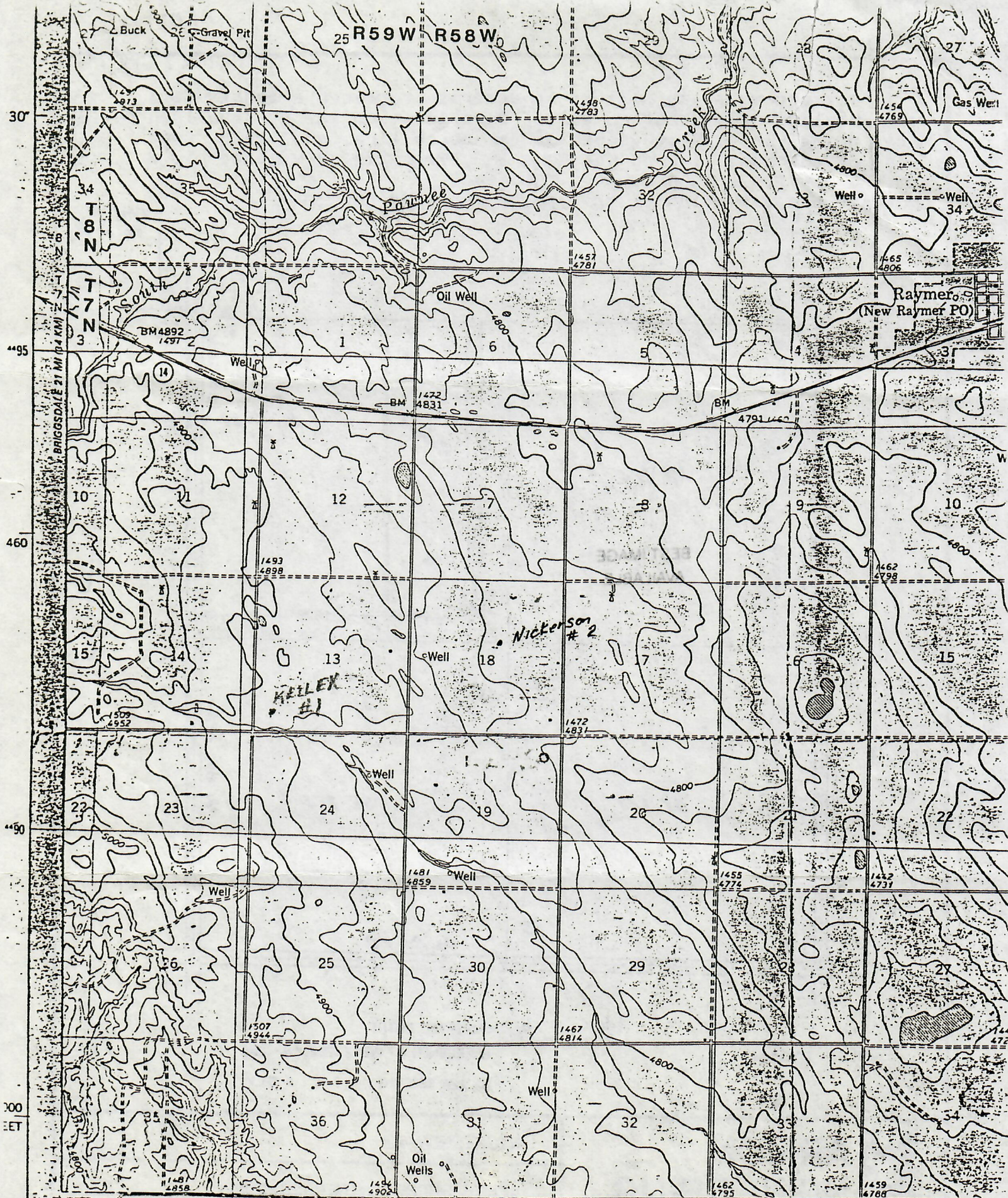
NICKERSON #2

WEEKS ENERGY MINERALS CORP.

WELD CO., COLORADO

27 OCT 1984





ENERGY MINERALS CORPORATION  
WILDCAT CREEK PROSPECT  
WELD COUNTY, COLORADO