

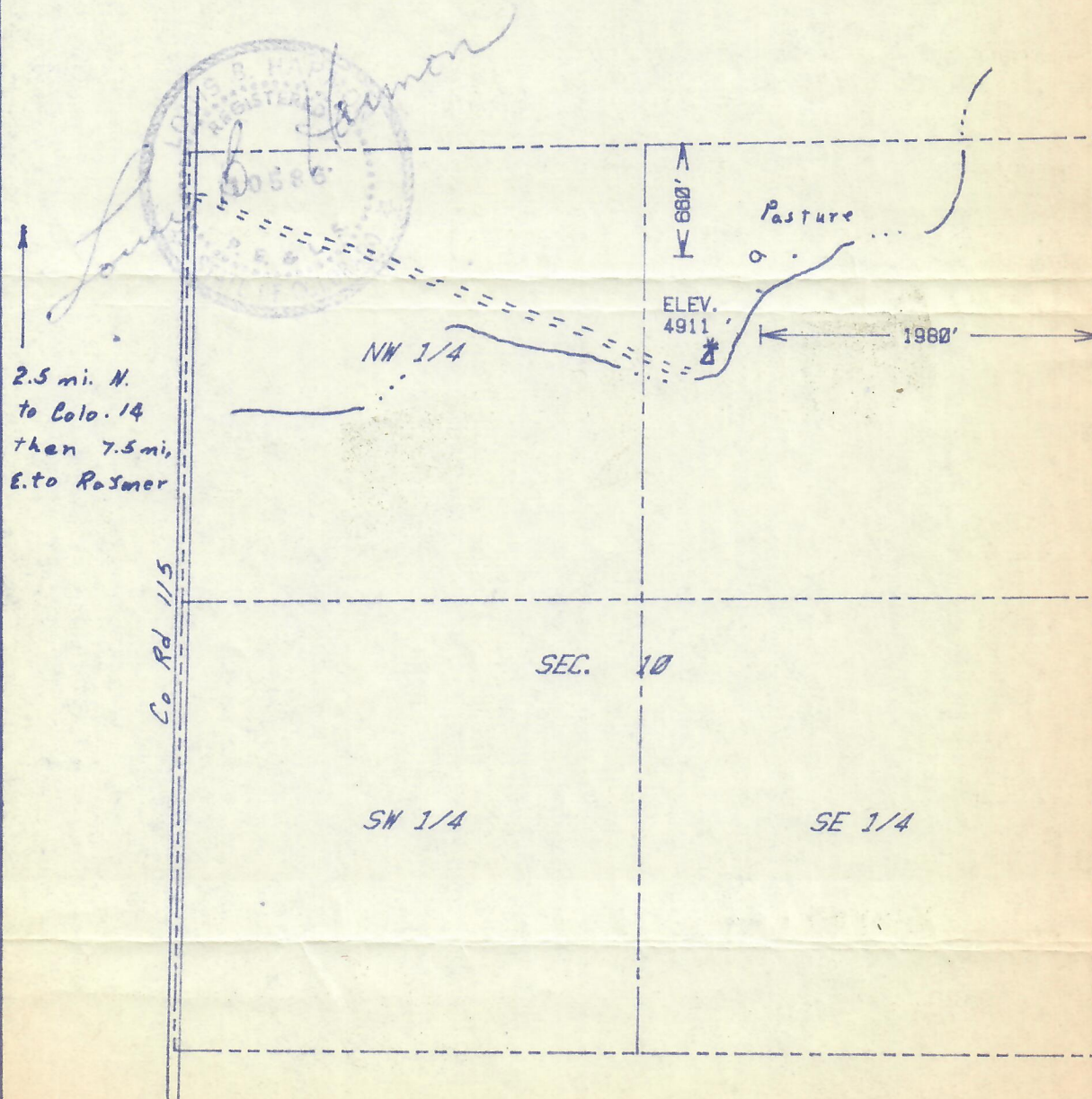


RECEIVED

OCT 2 1985

COLO. OIL & GAS CORP. COMM.

The accompanying plat is an accurate representation showing the location of a proposed well. This location may be described as a point 660 feet south of the north line, and 1980 feet west of the east line of Section 10, Township 7 N Range 59 W of the 6th P.M., WELD County, COLORADO. The surface elevation at this point is 4911 feet m.s.l.



SCALE - 1"=1000'

- SURVEYED POINT
- REFERENCE STAKE (200 'S, 200 'E)
- NE 1/4 SEC. 10, T 7 N, R 59 W

HARMON
ENGINEERING
SERVICES

DORIS #1

ENERGY MINERALS CORP.

WELD CO., COLORADO

25 SEPT. 1985