



November 5, 2019

Ms. Kate Graves
Reclamation Representative
Kerr-McGee Oil & Gas Onshore LP
501 N Division Blvd.
Platteville, Colorado 80651

**RE: Colorado Oil & Gas Conservation Commission (COGCC)
Vegetation Assessment Report (Interim Reclamation Completion Notice)
DOLPH-62N66W 1SWSE (336510)
Kerr-McGee Oil & Gas Onshore LP (Operator: 47120)**

Dear Ms. Graves:

Apex Companies, LLC (Apex) is presenting this letter to Kerr-McGee Oil & Gas Onshore LP (Kerr-McGee) documenting the results of a vegetation assessment that demonstrates successful completion of interim reclamation efforts, per COGCC Rule 1003, on the above-referenced location. Attached is a topographic location map and site map with additional location information.

Based on site visits and the completed vegetation assessment, Apex inspectors confirmed that the unused portions of the reduced production footprint have been stabilized and seeded with a mixture consistent with species composition and reseeding practices common to the area.

On July 10, 2019, modified step-point vegetation surveys were conducted on the reclaimed portion of the well pad, and on adjacent reference areas. Foliar and basal cover, along with non-vegetated and noxious weed occurrences, were documented; 100 survey points were recorded within the reclaimed disturbance and 100 survey points were recorded within the reference area. Vegetation survey points were identified using a bullseye target tool. The survey methodology employed by Apex is based on the *step-point method* described in an interagency technical reference published by the Bureau of Land Management (BLM, 1996).

Noxious weeds listed by the Colorado Department of Agriculture were excluded from the percent of reference vegetative coverage calculations, per COGCC Rule 1003.e (2). To ensure reclamation vegetative composition meets the standards of Kerr-McGee and the COGCC, undesirable cover is also quantified in the attached Summary of Field Data. Undesirable cover includes species identified by the United States Department of Agriculture (USDA) Natural Resource Conservation Service (NRCS) as introduced and not native to the lower 48 states, and not considered beneficial for reclamation purposes.

Survey results indicate the reclaimed area has a foliar vegetative cover that is 513.0% of the reference area. Vegetation survey results are provided in the attached survey summary table and data sheets. Based on the results of the survey, interim reclamation, as defined by COGCC Rule 1003.e (2), has been achieved. Photographs required by COGCC Rule 1003.e (3) are also attached along with the site map illustrating vegetation survey photo points and transect locations.

Apex appreciates the opportunity to provide environmental consulting services on this project. Should you have any questions or require additional information, please do not hesitate to contact me.

Sincerely,

Apex Companies, LLC



Adam Roll

Environmental Scientist

970-589-6111

Adam.Roll@apexcoss.com

Attachments:

1. Vegetation Survey - Summary of Field Data
2. Topographic Location Map
3. Vegetation Survey Site Map
4. Vegetation Assessment Photo Log
5. Vegetation Survey (Field Data Tables)

Reference:

United States (U.S.) Department of Agriculture (USDA), Forest Service (USFS), Natural Resource Conservation Service (NRCS) and U.S. Department of the Interior (USDOI) Bureau of Land Management (BLM). "Sampling Vegetation Attributes, Interagency Technical Reference, 1996 (Revised in 1997, and 1999)". USDOI BLM Technical References #1734-4.

Date Accessed: 2 August, 2017

Vegetation Survey - Summary of Field Data

Client	Kerr-McGee
COGCC Location Name (ID)	DOLPH-62N66W 1SWSE (336510)
Assessment Date	7/10/2019
Inspector Name	Carolyn Craveiro De Sa

Based on the survey methodology, the foliar cover (%) in each survey area is calculated by summing the total number of foliar occurrences, excluding noxious weeds, and dividing by the total occurrences in the transects. For this location:

Reclaim Area (Foliar Cover)	Reference Area (Foliar Cover)
$(58 + 1 + 0) / 162 =$ 36.4%	$(12 + 1 + 0) / 183 =$ 7.1%

For the purposes of this assessment, the undesirable foliar cover (%) is calculated by summing the total number of undesirable* foliar occurrences and dividing by the total occurrences in the transects, excluding noxious weeds. For this location:

Reclaim Area (Undesirable Foliar Cover)	Reference Area (Undesirable Foliar Cover)
$0 / (58 + 1 + 0) =$ 0.0%	$1 / (12 + 1 + 0) =$ 7.7%

The percent of reference used to evaluate the reclamation area for compliance with COGCC Rule 1003.e(2) is calculated by dividing the foliar cover (%) in the reclaim area by the foliar cover (%) in the reference area. For this location:

Percent of Reference (Reclaim % / Reference %)
$36.4\% / 7.1\% =$ 513.0%

Reclaim Area Vegetation

Desirable Foliar Cover	36.4%
Desirable Basal Cover	13.6%
Non Vegetated	46.9%
Noxious Weeds Cover	3.1%
Undesirable Cover	0.0%
Quality Assurance Total <i>(must equal 100)</i>	100.0%
Grass (Foliar)	58
Forb (Foliar)	1
Shrubs (Foliar)	0
Noxious Weed (Foliar)	3
Grass (Basal)	22
Forb (Basal)	0
Shrubs (Basal)	0
Noxious Weed (Basal)	2
Bare Ground	23
Litter	53
Rock	0
Total Occurrences	162

Reference Area Vegetation

Desirable Foliar Cover	6.6%
Desirable Basal Cover	8.2%
Non Vegetated	30.1%
Noxious Weeds Cover	54.6%
Undesirable Cover	0.5%
Quality Assurance Total <i>(must equal 100)</i>	100.0%
Grass (Foliar)	12
Forb (Foliar)	1
Shrubs (Foliar)	0
Noxious Weed (Foliar)	70
Grass (Basal)	15
Forb (Basal)	0
Shrubs (Basal)	0
Noxious Weed (Basal)	30
Bare Ground	5
Litter	50
Rock	0
Total Occurrences	183

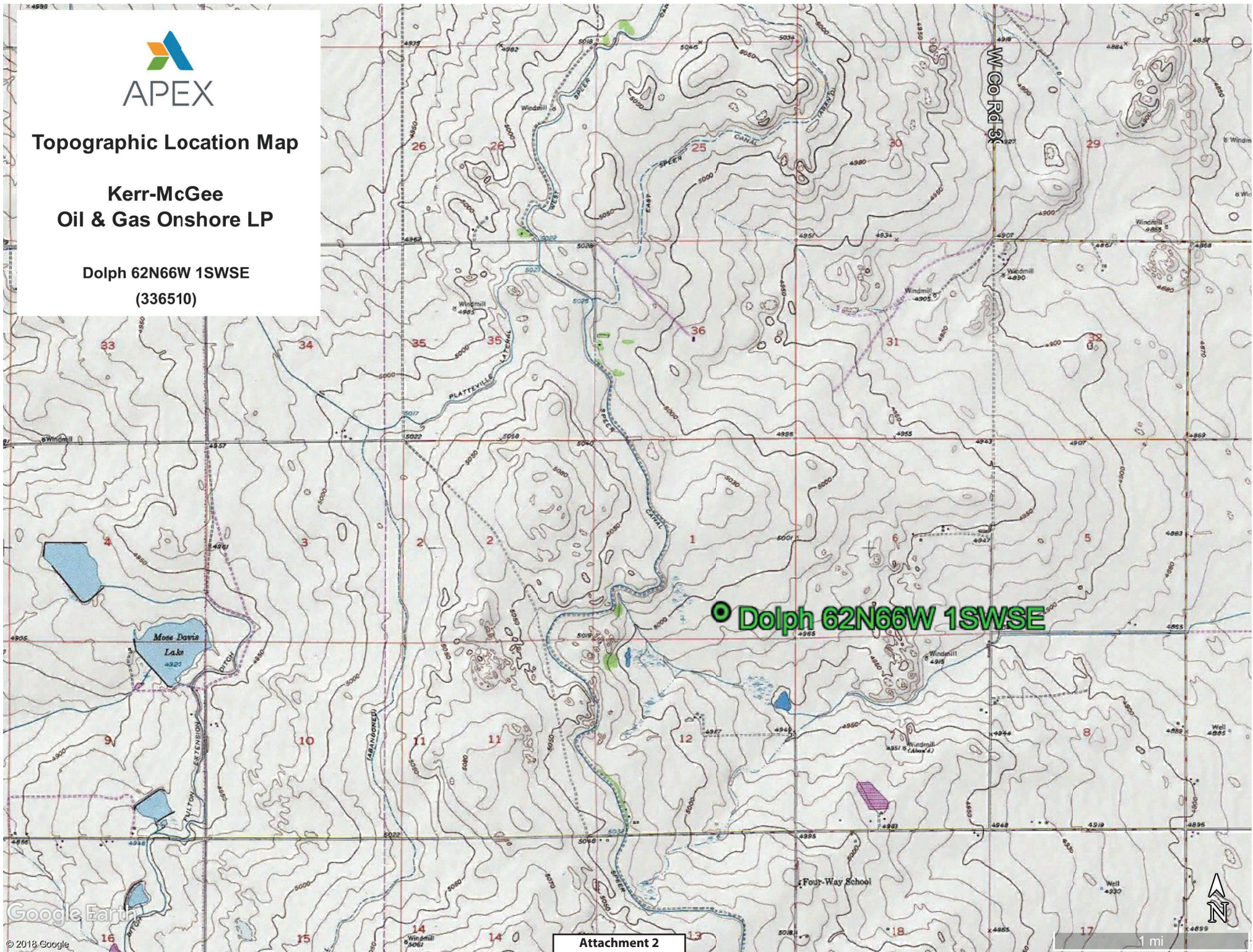
* Identified by the USDA NRCS as introduced and not native to the lower 48 states, and not considered beneficial for reclamation purposes.



Topographic Location Map

Kerr-McGee
Oil & Gas Onshore LP

Dolph 62N66W 1SWSE
(336510)



Google Earth

© 2013 Google

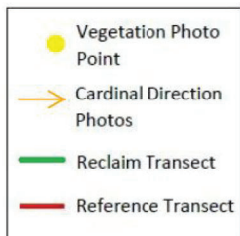
Attachment 2



Vegetation Survey Site Map

Kerr-McGee Oil & Gas Onshore LP

Dolph 62N66W 1SWSE
(336510)



Legal Description: SWSE, Sec. 1, T2N-R66W

Lat/Long: 40.161976/-104.722945

County: Weld

Land Use: Non-Cropland

Reference Area Foliar Cover: 7.1%

Reclaim Area Foliar Cover: 36.4%

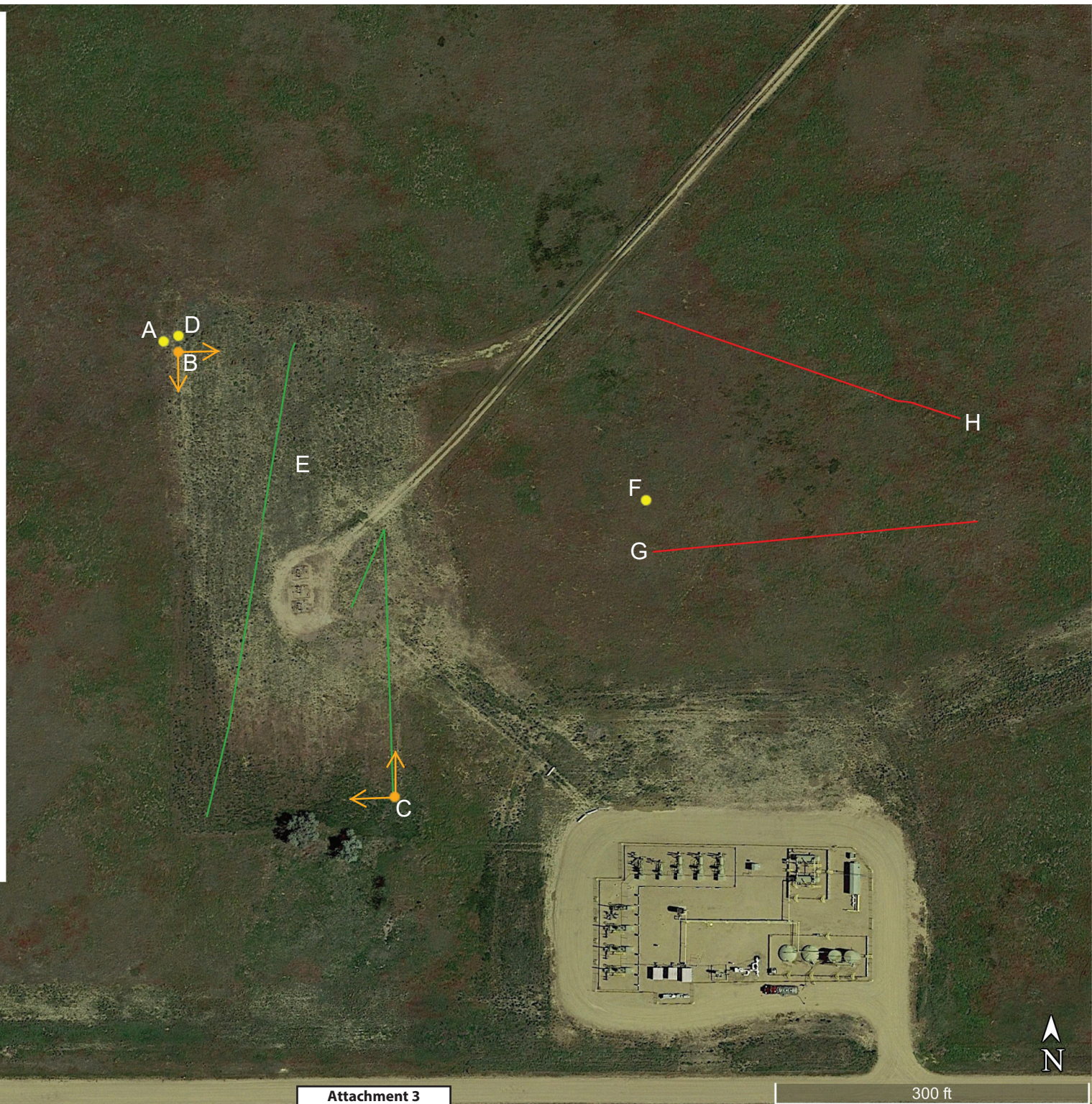
Cover Ratio (Reclaim/Reference): 513.0%

Inspector: Carolyn Craveiro De Sa

Assessment Date: 07/10/2019

Aerial Imagery Date: 05/31/2018

**Please reference coordinate disclaimer on the photo log pages.*



Vegetation Assessment Photo Log

Date Completed - 07/10/2019

Client - Kerr-McGee Oil & Gas Onshore LP

Location Name (ID) - DOLPH-62N66W 1SWSE (336510)



Photo Point A: Edge of Disturbance - Facing South

*Geographic coordinates provided in the borders of all attached photos are based on points identified by the mobile phone or tablet which collected the photo. Coordinate accuracy in this format is typically no greater than 5 meters, while the points illustrated in the site diagram associated with this submittal were collected with a high accuracy GPS unit with sub-meter accuracy. Discrepancies between the site diagram and photo coordinates will exist.

Vegetation Assessment Photo Log

Date Completed - 07/10/2019

Client - Kerr-McGee Oil & Gas Onshore LP

Location Name (ID) - DOLPH-62N66W 1SWSE (336510)



Photo Point B: North of Disturbance - Facing South



Photo Point C: South of Disturbance - Facing North



Photo Point B: West of Disturbance - Facing East



Photo Point C: East of Disturbance - Facing West

Vegetation Assessment Photo Log

Date Completed - 07/10/2019

Client - Kerr-McGee Oil & Gas Onshore LP

Location Name (ID) - DOLPH-62N66W 1SWSE (336510)



Photo Point D: Reclaim Area Vegetation - Facing South

Vegetation Assessment Photo Log

Client - Kerr-McGee Oil & Gas Onshore LP

Date Completed - 07/10/2019

Location Name (ID) - DOLPH-62N66W 1SWSE (336510)



Photo Point C: Reclaim Transect 1 - Facing North



Transect Photo E: Reclaim Transect 2 - Facing South

Vegetation Assessment Photo Log

Date Completed - 07/10/2019

Client - Kerr-McGee Oil & Gas Onshore LP

Location Name (ID) - DOLPH-62N66W 1SWSE (336510)



Photo Point F: Reference Area Vegetation

Vegetation Assessment Photo Log

Client - Kerr-McGee Oil & Gas Onshore LP

Date Completed - 07/10/2019

Location Name (ID) - DOLPH-62N66W 1SWSE (336510)



Transect Photo G: Reference Transect 1 - Facing East



Transect Photo H: Reference Transect 2 - Facing West

Vegetation Survey (Field Data Table)

Client: Kerr-McGee
 COGCC Location Name (ID): DOLPH-62N66W 1SWSE (336510)
 Transect ID: Reclaim Transect 1
 Transect Length: 335 ft.
 Assessment Date: 7/10/2019
 Inspector: Carolyn Craveiro De Sa

Point	Foliar	Species	Basal	Species
1	Grass	<i>Thinopyrum intermedia</i>	Non Vegetative	Bare Ground
2	Grass	<i>Thinopyrum intermedia</i>	Non Vegetative	Litter
3	Grass	<i>Bromus inermis</i>	Non Vegetative	Litter
4	Grass	<i>Thinopyrum intermedia</i>	Non Vegetative	Litter
5			Non Vegetative	Bare Ground
6			Non Vegetative	Litter
7			Non Vegetative	Litter
8	Noxious Weed C	<i>Bromus tectorum</i>	Non Vegetative	Litter
9	Grass	<i>Thinopyrum intermedia</i>	Grass	<i>Thinopyrum intermedia</i>
10	Grass	<i>Bromus inermis</i>	Non Vegetative	Litter
11			Non Vegetative	Litter
12			Non Vegetative	Bare Ground
13	Grass	<i>Thinopyrum intermedia</i>	Non Vegetative	Bare Ground
14	Grass	<i>Thinopyrum intermedia</i>	Grass	<i>Thinopyrum intermedia</i>
15			Non Vegetative	Litter
16			Non Vegetative	Litter
17	Grass	<i>Thinopyrum intermedia</i>	Non Vegetative	Litter
18	Noxious Weed C	<i>Bromus tectorum</i>	Non Vegetative	Litter
19	Grass	<i>Hesperostipa comata</i>	Non Vegetative	Bare Ground
20	Grass	<i>Bromus inermis</i>	Non Vegetative	Litter
21	Grass	<i>Thinopyrum intermedia</i>	Grass	<i>Thinopyrum intermedia</i>
22			Non Vegetative	Litter
23	Grass	<i>Bouteloua gracilis</i>	Grass	<i>Bouteloua gracilis</i>
24	Noxious Weed C	<i>Bromus tectorum</i>	Noxious Weed C	<i>Bromus tectorum</i>
25	Grass	<i>Bromus inermis</i>	Non Vegetative	Bare Ground
26			Non Vegetative	Litter
27			Non Vegetative	Bare Ground
28			Non Vegetative	Litter
29	Grass	<i>Bromus inermis</i>	Non Vegetative	Bare Ground
30	Grass	<i>Thinopyrum intermedia</i>	Non Vegetative	Bare Ground
31			Non Vegetative	Litter
32			Non Vegetative	Litter
33			Non Vegetative	Litter
34	Grass	<i>Thinopyrum intermedia</i>	Non Vegetative	Litter
35	Grass	<i>Thinopyrum intermedia</i>	Grass	<i>Thinopyrum intermedia</i>
36	Grass	<i>Pascopyrum smithii</i> Agropyron	Grass	<i>Pascopyrum smithii</i> Agropyron
37	Grass	<i>Thinopyrum intermedia</i>	Grass	<i>Thinopyrum intermedia</i>
38			Non Vegetative	Bare Ground
39	Grass	<i>Thinopyrum intermedia</i>	Noxious Weed C	<i>Bromus tectorum</i>
40	Grass	<i>Thinopyrum intermedia</i>	Grass	<i>Thinopyrum intermedia</i>
41	Grass	<i>Agropyron cristatum</i>	Non Vegetative	Bare Ground
42			Non Vegetative	Bare Ground
43			Non Vegetative	Bare Ground
44	Grass	<i>Hesperostipa comata</i>	Grass	<i>Hesperostipa comata</i>
45			Non Vegetative	Litter
46	Grass	<i>Thinopyrum intermedia</i>	Grass	<i>Thinopyrum intermedia</i>
47	Forb	<i>Oenothera albicaulis</i>	Non Vegetative	Bare Ground
48	Grass	<i>Thinopyrum intermedia</i>	Grass	<i>Thinopyrum intermedia</i>
49	Grass	<i>Pascopyrum smithii</i> Agropyron	Non Vegetative	Bare Ground
50			Non Vegetative	Litter

Vegetation Survey (Field Data Table)

Client: Kerr-McGee
 COGCC Location Name (ID): DOLPH-62N66W 1SWSE (336510)
 Transect ID: Reclaim Transect 2
 Transect Length: 467 ft.
 Assessment Date: 7/10/2019
 Inspector: Carolyn Craveiro De Sa

Point	Foliar	Species	Basal	Species
1			Non Vegetative	Litter
2	Grass	<i>Thinopyrum intermedia</i>	Non Vegetative	Litter
3	Grass	<i>Agropyron cristatum</i>	Non Vegetative	Litter
4	Grass	<i>Elymus lanceolatus</i>	Non Vegetative	Litter
5	Grass	<i>Pascopyrum smithii Agropyron</i>	Non Vegetative	Litter
6	Grass	<i>Thinopyrum intermedia</i>	Grass	<i>Thinopyrum intermedia</i>
7	Grass	<i>Thinopyrum intermedia</i>	Non Vegetative	Litter
8			Non Vegetative	Litter
9			Non Vegetative	Litter
10	Grass	<i>Pascopyrum smithii Agropyron</i>	Grass	<i>Pascopyrum smithii Agropyron</i>
11	Grass	<i>Thinopyrum intermedia</i>	Non Vegetative	Litter
12	Grass	<i>Thinopyrum intermedia</i>	Non Vegetative	Litter
13			Non Vegetative	Bare Ground
14	Grass	<i>Thinopyrum intermedia</i>	Non Vegetative	Litter
15	Grass	<i>Thinopyrum intermedia</i>	Non Vegetative	Litter
16			Non Vegetative	Litter
17	Grass	<i>Eragrostis trichodes</i>	Non Vegetative	Bare Ground
18	Grass	<i>Sporobolus cryptandrus</i>	Non Vegetative	Litter
19	Grass	<i>Thinopyrum intermedia</i>	Non Vegetative	Bare Ground
20	Grass	<i>Thinopyrum intermedia</i>	Non Vegetative	Litter
21	Grass	<i>Thinopyrum intermedia</i>	Non Vegetative	Litter
22			Non Vegetative	Litter
23	Grass	<i>Thinopyrum intermedia</i>	Non Vegetative	Litter
24			Non Vegetative	Bare Ground
25			Non Vegetative	Litter
26			Non Vegetative	Litter
27			Non Vegetative	Litter
28			Non Vegetative	Bare Ground
29	Grass	<i>Aristida Spp</i>	Grass	<i>Aristida Spp</i>
30			Non Vegetative	Litter
31			Non Vegetative	Bare Ground
32	Grass	<i>Agropyron cristatum</i>	Non Vegetative	Litter
33	Grass	<i>Thinopyrum intermedia</i>	Grass	<i>Thinopyrum intermedia</i>
34	Grass	<i>Thinopyrum intermedia</i>	Non Vegetative	Litter
35	Grass	<i>Thinopyrum intermedia</i>	Grass	<i>Thinopyrum intermedia</i>
36			Non Vegetative	Bare Ground
37	Grass	<i>Thinopyrum intermedia</i>	Non Vegetative	Litter
38	Grass	<i>Agropyron cristatum</i>	Grass	<i>Agropyron cristatum</i>
39	Grass	<i>Thinopyrum intermedia</i>	Non Vegetative	Litter
40			Non Vegetative	Litter
41	Grass	<i>Hesperostipa comata</i>	Grass	<i>Hesperostipa comata</i>
42	Grass	<i>Thinopyrum intermedia</i>	Grass	<i>Thinopyrum intermedia</i>
43			Non Vegetative	Litter
44			Non Vegetative	Litter
45	Grass	<i>Agropyron cristatum</i>	Grass	<i>Agropyron cristatum</i>
46	Grass	<i>Pascopyrum smithii Agropyron</i>	Grass	<i>Pascopyrum smithii Agropyron</i>
47	Grass	<i>Elymus lanceolatus</i>	Non Vegetative	Litter
48			Non Vegetative	Bare Ground
49	Grass	<i>Hesperostipa comata</i>	Grass	<i>Hesperostipa comata</i>
50			Non Vegetative	Litter

Vegetation Survey (Field Data Table)

Client: Kerr-McGee
 COGCC Location Name (ID): DOLPH-62N66W 1SWSE (336510)
 Transect ID: Reference Transect 1
 Transect Length: 329 ft.
 Assessment Date: 7/10/2019
 Inspector: Carolyn Craveiro De Sa

Point	Foliar	Species	Basal	Species
1	Noxious Weed C	<i>Bromus tectorum</i>	Non Vegetative	Litter
2	Noxious Weed C	<i>Bromus tectorum</i>	Noxious Weed C	<i>Bromus tectorum</i>
3	Noxious Weed C	<i>Bromus tectorum</i>	Non Vegetative	Litter
4	Grass	<i>Hesperostipa comata</i>	Grass	<i>Hesperostipa comata</i>
5	Noxious Weed C	<i>Bromus tectorum</i>	Noxious Weed C	<i>Bromus tectorum</i>
6	Noxious Weed C	<i>Bromus tectorum</i>	Noxious Weed C	<i>Bromus tectorum</i>
7	Noxious Weed C	<i>Bromus tectorum</i>	Non Vegetative	Litter
8	Noxious Weed C	<i>Bromus tectorum</i>	Non Vegetative	Litter
9	Grass	<i>Hesperostipa comata</i>	Noxious Weed C	<i>Bromus tectorum</i>
10	Noxious Weed C	<i>Bromus tectorum</i>	Grass	<i>Hesperostipa comata</i>
11	Noxious Weed C	<i>Bromus tectorum</i>	Grass	<i>Hesperostipa comata</i>
12			Non Vegetative	Litter
13	Noxious Weed C	<i>Bromus tectorum</i>	Non Vegetative	Litter
14	Grass	<i>Hesperostipa comata</i>	Grass	<i>Hesperostipa comata</i>
15	Noxious Weed C	<i>Bromus tectorum</i>	Grass	<i>Hesperostipa comata</i>
16	Noxious Weed C	<i>Bromus tectorum</i>	Grass	<i>Hesperostipa comata</i>
17	Grass	<i>Buchloe dactyloides</i>	Grass	<i>Buchloe dactyloides</i>
18	Grass	<i>Buchloe dactyloides</i>	Grass	<i>Buchloe dactyloides</i>
19	Grass	<i>Buchloe dactyloides</i>	Grass	<i>Buchloe dactyloides</i>
20	Grass	<i>Buchloe dactyloides</i>	Non Vegetative	Litter
21	Noxious Weed C	<i>Bromus tectorum</i>	Grass	<i>Buchloe dactyloides</i>
22			Non Vegetative	Litter
23			Non Vegetative	Litter
24	Noxious Weed C	<i>Bromus tectorum</i>	Noxious Weed C	<i>Bromus tectorum</i>
25	Forb	<i>Sisymbrium altissimum</i>	Noxious Weed C	<i>Bromus tectorum</i>
26	Noxious Weed C	<i>Bromus tectorum</i>	Noxious Weed C	<i>Bromus tectorum</i>
27	Noxious Weed C	<i>Bromus tectorum</i>	Non Vegetative	Litter
28	Noxious Weed C	<i>Bromus tectorum</i>	Non Vegetative	Litter
29	Grass	<i>Hesperostipa comata</i>	Noxious Weed C	<i>Bromus tectorum</i>
30	Noxious Weed C	<i>Bromus tectorum</i>	Non Vegetative	Litter
31			Non Vegetative	Bare Ground
32			Non Vegetative	Litter
33	Noxious Weed C	<i>Bromus tectorum</i>	Grass	<i>Buchloe dactyloides</i>
34	Grass	<i>Buchloe dactyloides</i>	Grass	<i>Buchloe dactyloides</i>
35	Grass	<i>Buchloe dactyloides</i>	Grass	<i>Buchloe dactyloides</i>
36	Noxious Weed C	<i>Bromus tectorum</i>	Non Vegetative	Litter
37	Noxious Weed C	<i>Bromus tectorum</i>	Non Vegetative	Litter
38	Noxious Weed C	<i>Bromus tectorum</i>	Noxious Weed C	<i>Bromus tectorum</i>
39	Noxious Weed C	<i>Bromus tectorum</i>	Noxious Weed C	<i>Bromus tectorum</i>
40			Non Vegetative	Litter
41	Noxious Weed C	<i>Bromus tectorum</i>	Noxious Weed C	<i>Bromus tectorum</i>
42	Noxious Weed C	<i>Bromus tectorum</i>	Noxious Weed C	<i>Bromus tectorum</i>
43			Non Vegetative	Litter
44	Noxious Weed C	<i>Bromus tectorum</i>	Noxious Weed C	<i>Bromus tectorum</i>
45	Noxious Weed C	<i>Bromus tectorum</i>	Non Vegetative	Litter
46	Noxious Weed C	<i>Bromus tectorum</i>	Non Vegetative	Litter
47	Noxious Weed C	<i>Bromus tectorum</i>	Non Vegetative	Litter
48	Noxious Weed C	<i>Bromus tectorum</i>	Noxious Weed C	<i>Bromus tectorum</i>
49	Noxious Weed C	<i>Bromus tectorum</i>	Non Vegetative	Litter
50	Noxious Weed C	<i>Bromus tectorum</i>	Non Vegetative	Litter

Vegetation Survey (Field Data Table)

Client: Kerr-McGee
 COGCC Location Name (ID): DOLPH-62N66W 1SWSE (336510)
 Transect ID: Reference Transect 2
 Transect Length: 312 ft.
 Assessment Date: 7/10/2019
 Inspector: Carolyn Craveiro De Sa

Point	Foliar	Species	Basal	Species
1			Non Vegetative	Litter
2	Noxious Weed C	<i>Bromus tectorum</i>	Noxious Weed C	<i>Bromus tectorum</i>
3	Noxious Weed C	<i>Bromus tectorum</i>	Noxious Weed C	<i>Bromus tectorum</i>
4	Noxious Weed C	<i>Bromus tectorum</i>	Non Vegetative	Litter
5			Non Vegetative	Litter
6	Noxious Weed C	<i>Bromus tectorum</i>	Grass	<i>Buchloe dactyloides</i>
7	Grass	<i>Buchloe dactyloides</i>	Grass	<i>Buchloe dactyloides</i>
8	Grass	<i>Buchloe dactyloides</i>	Non Vegetative	Litter
9	Noxious Weed C	<i>Bromus tectorum</i>	Non Vegetative	Litter
10	Noxious Weed C	<i>Bromus tectorum</i>	Noxious Weed C	<i>Bromus tectorum</i>
11	Noxious Weed C	<i>Bromus tectorum</i>	Non Vegetative	Bare Ground
12	Noxious Weed C	<i>Bromus tectorum</i>	Non Vegetative	Litter
13	Noxious Weed C	<i>Bromus tectorum</i>	Noxious Weed C	<i>Bromus tectorum</i>
14	Noxious Weed C	<i>Bromus tectorum</i>	Non Vegetative	Litter
15	Noxious Weed C	<i>Bromus tectorum</i>	Non Vegetative	Litter
16			Non Vegetative	Litter
17	Noxious Weed C	<i>Bromus tectorum</i>	Non Vegetative	Litter
18			Non Vegetative	Bare Ground
19	Noxious Weed B	<i>Onopordum acanthium</i>	Noxious Weed B	<i>Onopordum acanthium</i>
20	Noxious Weed C	<i>Bromus tectorum</i>	Non Vegetative	Litter
21	Noxious Weed C	<i>Bromus tectorum</i>	Non Vegetative	Litter
22	Noxious Weed B	<i>Onopordum acanthium</i>	Noxious Weed C	<i>Bromus tectorum</i>
23	Noxious Weed B	<i>Onopordum acanthium</i>	Noxious Weed B	<i>Onopordum acanthium</i>
24	Noxious Weed B	<i>Onopordum acanthium</i>	Noxious Weed C	<i>Bromus tectorum</i>
25	Noxious Weed C	<i>Bromus tectorum</i>	Non Vegetative	Litter
26	Noxious Weed C	<i>Bromus tectorum</i>	Non Vegetative	Litter
27			Non Vegetative	Litter
28			Non Vegetative	Litter
29			Non Vegetative	Bare Ground
30	Noxious Weed C	<i>Bromus tectorum</i>	Noxious Weed C	<i>Bromus tectorum</i>
31	Noxious Weed C	<i>Bromus tectorum</i>	Non Vegetative	Litter
32	Noxious Weed C	<i>Bromus tectorum</i>	Non Vegetative	Litter
33	Noxious Weed C	<i>Bromus tectorum</i>	Noxious Weed C	<i>Bromus tectorum</i>
34	Noxious Weed C	<i>Bromus tectorum</i>	Noxious Weed C	<i>Bromus tectorum</i>
35	Noxious Weed C	<i>Bromus tectorum</i>	Noxious Weed C	<i>Bromus tectorum</i>
36	Noxious Weed B	<i>Onopordum acanthium</i>	Noxious Weed B	<i>Onopordum acanthium</i>
37			Non Vegetative	Bare Ground
38	Noxious Weed B	<i>Onopordum acanthium</i>	Non Vegetative	Litter
39	Noxious Weed C	<i>Bromus tectorum</i>	Noxious Weed C	<i>Bromus tectorum</i>
40	Noxious Weed C	<i>Bromus tectorum</i>	Noxious Weed C	<i>Bromus tectorum</i>
41	Noxious Weed C	<i>Bromus tectorum</i>	Non Vegetative	Litter
42	Noxious Weed C	<i>Bromus tectorum</i>	Non Vegetative	Litter
43	Noxious Weed C	<i>Bromus tectorum</i>	Non Vegetative	Litter
44	Noxious Weed C	<i>Bromus tectorum</i>	Noxious Weed C	<i>Bromus tectorum</i>
45			Non Vegetative	Litter
46	Noxious Weed C	<i>Bromus tectorum</i>	Non Vegetative	Litter
47	Noxious Weed C	<i>Bromus tectorum</i>	Non Vegetative	Litter
48	Noxious Weed C	<i>Bromus tectorum</i>	Non Vegetative	Litter
49	Noxious Weed C	<i>Bromus tectorum</i>	Non Vegetative	Litter
50			Non Vegetative	Litter