

D90 Energy/KTM, John Craig 4-2
073-06568

Inspection #688306288

11/8/2019

Routine Inspection



Colorado Oil and Gas Conservation Commission
39.21241, -103.63626, 5236.2ft, 189°
11/08/2019 09:09:29 AM



Colorado Oil and Gas Conservation Commission

39.21254, -103.63633, 5236.2ft, 196

11/08/2019 09:09:10 AM



Colorado Oil and Gas Conservation Commission

39.21241, -103.63628, 5239.5ft, 239'

11/08/2019 09:09:32 AM



Colorado Oil and Gas Conservation Commission

39.21176, -103.6362, 5213.3ft, 160°

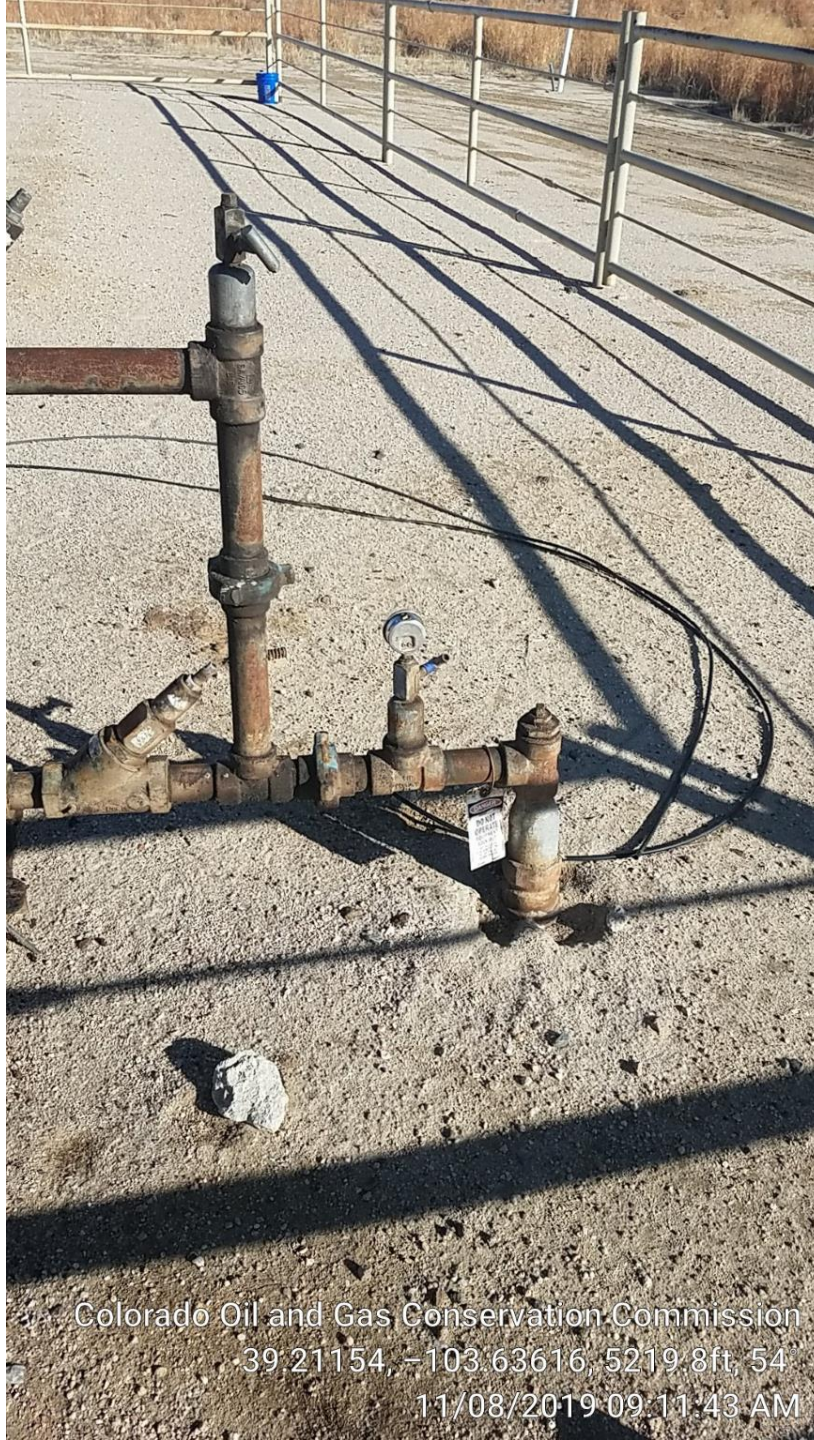
11/08/2019 09:10:53 AM



Colorado Oil and Gas Conservation Commission

39.21154, -103.63618, 5219.8ft, 349°

11/08/2019 09:11:31 AM



Colorado Oil and Gas Conservation Commission

39-21154, -103.63616, 5219.8ft, 54'

11/08/2019 09:11:43 AM



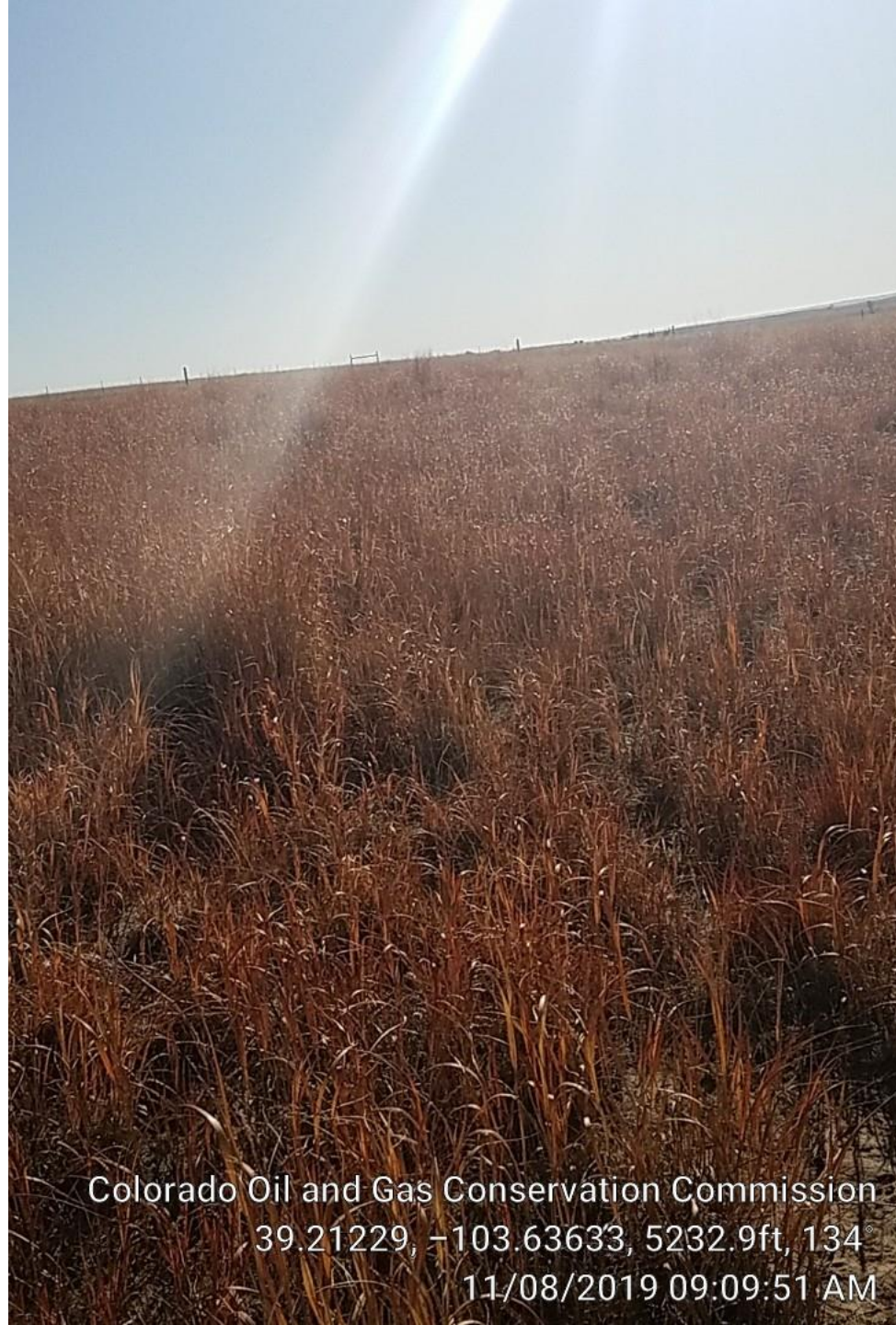
Colorado Oil and Gas Conservation Commission

39.21169, -103.63621, 5210.0ft, 35°

11/08/2019 09:11:03 AM



Colorado Oil and Gas Conservation Commission
39.21153, -103.63622, 5219.8ft, 115°
11/08/2019 09:11:26 AM



Colorado Oil and Gas Conservation Commission

39.21229, -103.63633, 5232.9ft, 134°

11/08/2019 09:09:51 AM



Colorado Oil and Gas Conservation Commission
39.21229, -103.63633, 5239.5ft, 216
11/08/2019 09:09:55 AM



Colorado Oil and Gas Conservation Commission
39.21155, -103.63623, 5219.8ft, 174
11/08/2019 09:11:23 AM