

Construction and Stormwater Inspection

November 4, 2019

Operator: CCRP OPERATING INC- 10665

Location ID: 455554

Inspection Document #: 697500788

Weld County, CO

SESE Section 27 T12N R65W

Chris Binschus
Reclamation Specialist, COGCC



COLORADO
Oil & Gas Conservation
Commission

Department of Natural Resources

Inspection Photos
Location Name: True Ranch Fee /27 East
Location ID: 455554



Photo 1. Photo taken from the southeastern location, facing East. Photo illustrates the new constructed sediment trap based off engineered designs. Note: Silt fence throughout the perimeter is in disrepair and not in proper functioning condition.

Inspection Photos
Location Name: True Ranch Fee /27 East
Location ID: 455554



Photo 2. Photo taken from the southeastern location, facing South. Photo illustrates the ditch BMP installed in conjunction with the sediment trap. Note: Fine sediments from the well pad area are accumulating in the ditch BMP due to the well pad not properly stabilized.

Inspection Photos
Location Name: True Ranch Fee /27 East
Location ID: 455554



Photo 3. Photo taken from the eastern location, facing East. Photo illustrates the outflow area. The outflow area doesn't appear to be installed with good engineering practices.

Inspection Photos
Location Name: True Ranch Fee /27 East
Location ID: 455554



Photo 4. Photo taken from the eastern location, facing Northeast. Photo illustrates fine sediments from the well pad area are accumulating in the ditch BMP due to the well pad not properly stabilized.

Inspection Photos
Location Name: True Ranch Fee /27 East
Location ID: 455554



Photo 5. Photo taken from the northeastern location, facing North. Photo illustrates the new constructed sediment trap based off engineered designs.

Inspection Photos
Location Name: True Ranch Fee /27 East
Location ID: 455554



Photo 6. Photo taken from the topsoil stockpile along the northern location, facing West. Photo illustrates Operator has re-stabilized the topsoil stockpile.

Inspection Photos
Location Name: True Ranch Fee /27 East
Location ID: 455554



Photo 7. Photo taken from the topsoil stockpile along the northern location, facing West. See comments under Photo 6.

Inspection Photos
Location Name: True Ranch Fee /27 East
Location ID: 455554

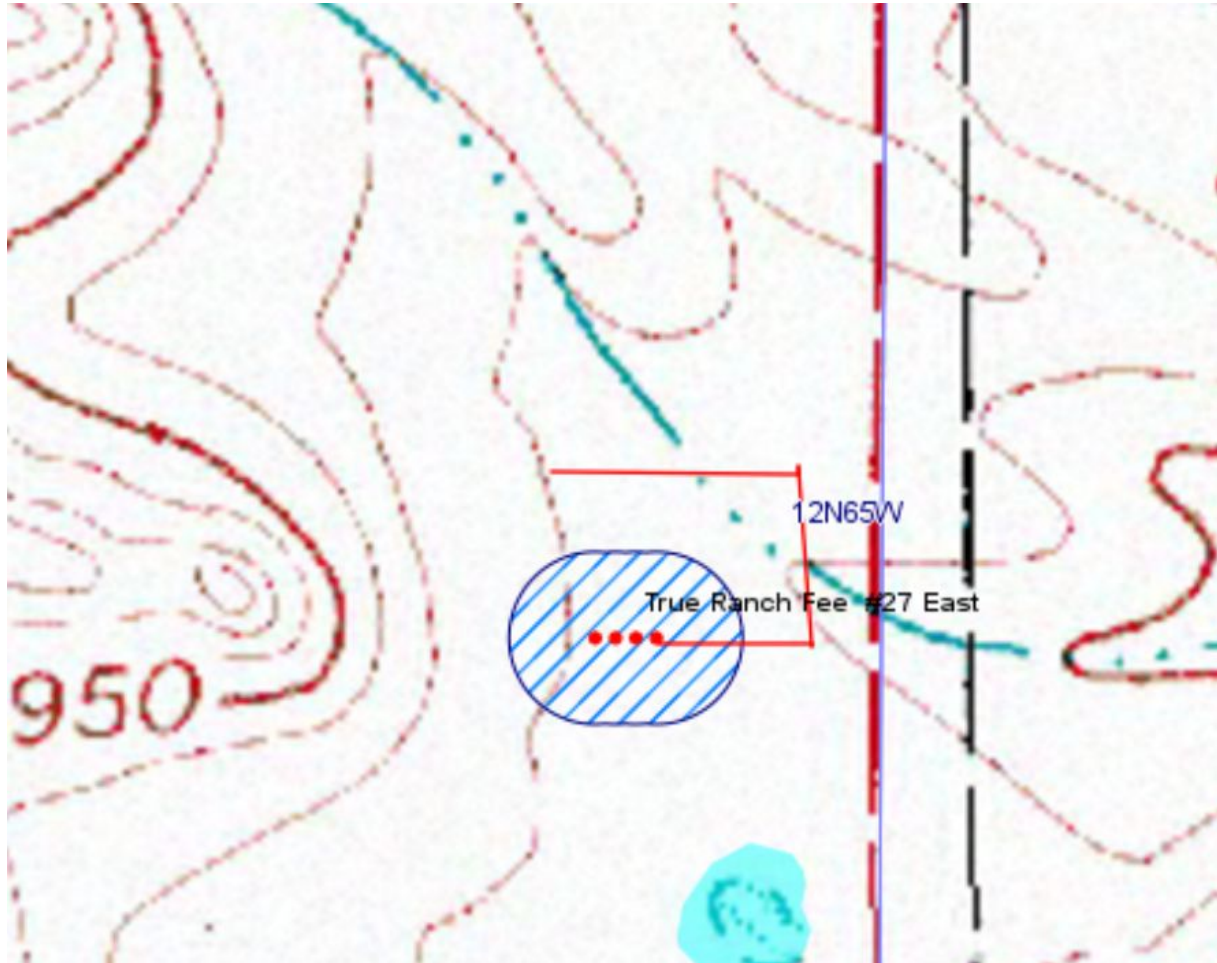


Photo 8. Photo taken from the topsoil stockpile, facing South. Photo is trying to illustrate the approximate rig area (dashed red lines). The rig area has CDOT Class 6 base; whereas, the rest of the well pad appears to remain unconsolidated as fines are accumulating the eastern ditch BMP.

Inspection Photos

Location Name: True Ranch Fee /27 East

Location ID: 455554



The 24K topo illustrates this location was built on top of an Intermittent stream. The red lines are the approximate northeast well pad perimeter, not including the topsoil stockpile or stormwater BMP areas, in relation to the Intermittent stream.

Inspection Photos
Location Name: True Ranch Fee /27 East
Location ID: 455554



2017 aerial imagery using COGCC GISOnline illustrating the Freshwater Pond habitat classified as a PUSC wetland. Operator has constructed the location right adjacent to the Freshwater Pond.