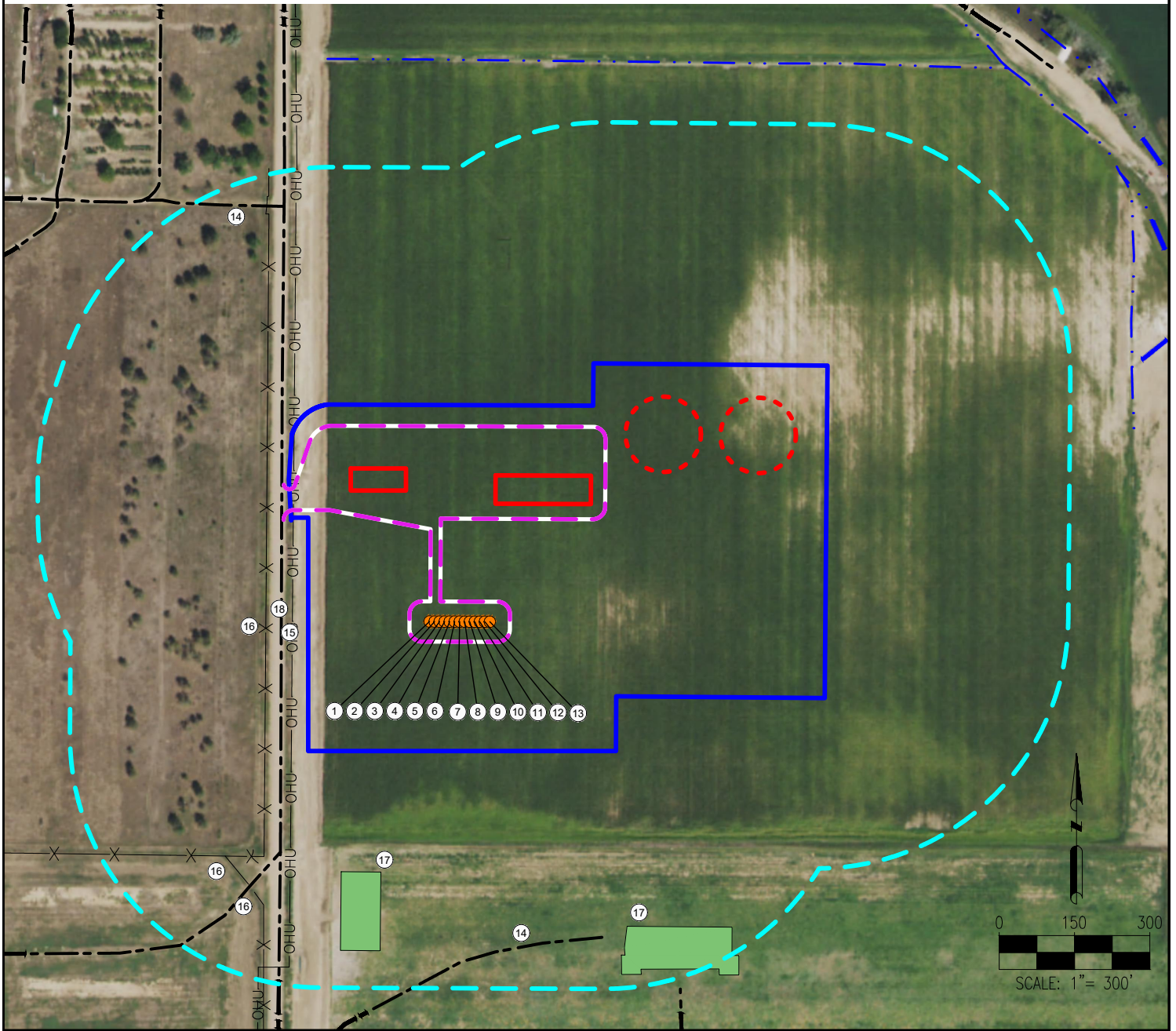


# WARNER 10H-E165 PAD LOCATION DRAWING



1. WARNER 2AA-10H-E165
2. WARNER 2A-10H-E165
3. WARNER 2B-10H-E165
4. WARNER 2C-10H-E165
5. WARNER 2D-10H-E165
6. WARNER 2E-10H-E165
7. WARNER 2F-10H-E165
8. WARNER 2G-10H-E165

9. WARNER 2H-10H-E165
10. WARNER 2I-10H-E165
11. WARNER 2J-10H-E165
12. WARNER 2K-10H-E165
13. WARNER 2L-10H-E165
14. PRIVATE ROADS ARE  $\pm 582'$  SW,  $\pm 660'$  SE,  $\pm 901'$  NW,
15. OVERHEAD UTILITIES ARE  $\pm 341'$  W
16. FENCES ARE  $\pm 389'$  W,  $\pm 660'$  SW,  $676'$  SW

17. BUILDINGS ARE  $\pm 523'$  SW,  $\pm 692'$  SE
18. PUBLIC ROAD (WELD COUNTY ROAD 43) IS  $\pm 345'$  W

## LEGEND:

- = PROPOSED ACCESS ROAD
- = EXISTING ROAD
- = DITCH
- X X X = FENCE
- OHU— = OVERHEAD UTILITY
- = PROPOSED WELL
- = DISTURBANCE AREA
- = PROPOSED FACILITY BERM
- = 500' RADIUS
- = BUILDING UNIT
- = BUILDING
- = PROPOSED MLVT

## MEASURED FROM NEAREST WELL OR FACILITY:

- BUILDING  $\pm 508'$  SW
- BUILDING UNIT  $\pm 1633'$  SE
- PUBLIC ROAD (COUNTY ROAD 43)  $\pm 113'$  W
- PROPERTY LINE (BRAD GUTKNECHT)  $\pm 117'$  W
- UTILITY (POWERLINE)  $\pm 106'$  W
- RAILROAD  $\pm 2112'$  SE
- SCHOOL FACILITY:  $\pm 4851'$  NE
- SCHOOL PROPERTY LINE:  $\pm 4771'$  NE
- CHILD CARE CENTER:  $\pm 4851'$  NE

## REFERENCE LOCATION

**\*\*WARNER 2F-10H-E165\*\***

LAT: 40.067252° N  
LONG: 104.658249° W  
ELEVATION: 4971'  
2202' FNL & 353' FWL  
PDOP: 2.3  
GPS OPERATOR: AARON RIVERA

**DISCLAIMER:**  
THIS PLOT DOES NOT REPRESENT A MONUMENTED LAND SURVEY AND SHOULD NOT BE RELIED UPON TO DETERMINE BOUNDARY LINES, PROPERTY OWNERSHIP OR OTHER PROPERTY INTERESTS. PARCEL LINES, IF DEPICTED HAVE NOT BEEN FIELD VERIFIED AND MAY BE BASED UPON PUBLICLY AVAILABLE DATA THAT ALSO HAS NOT BEEN INDEPENDENTLY VERIFIED.

DATA SOURCE:  
AERIAL IMAGERY: NAIP 2017  
WATER WELLS: COLORADO DWR  
NHD: USGS

PUBLICLY AVAILABLE DATA SOURCES HAVE NOT BEEN INDEPENDENTLY VERIFIED BY ASCENT.

## MEASURED FROM NEAREST EDGE OF DISTURBANCE:

SURFACE WATER (DITCH)  $\pm 623'$  E

## MEASURED FROM NEAREST EDGE OF DISTURBANCE:

WATER WELL  $\pm 922'$  SE SWL = 0'  
PERMIT: 81474-F RECEIPT: 3683053  
WATER WELL  $\pm 1041'$  SE SWL = 273'  
PERMIT: 137539--A RECEIPT: 0249905B

**DISTURBANCE ACREAGE:**  
16.3 ACRES DRILLING OPERATIONS  
3.60 ACRES INTERIM RECLAIM

CURRENT SURFACE USE: IRRIGATED CROP  
FUTURE SURFACE USE: IRRIGATED CROP

PREPARED FOR:



**CRESTONE PEAK  
RESOURCES**



FIELD DATE:  
**08-23-18**  
DRAWING DATE:  
**11-07-19**  
BY:  
**CAJ**  
CHECKED:  
**IJM**

SITE NAME:  
**WARNER 10H-E165 PAD**  
SURFACE LOCATION:  
**SW 1/4 NW 1/4 SEC. 10, T1N, R65W, 6TH P.M.  
WELD COUNTY, COLORADO**