



Great Western Operating Company, LLC

Surface Post Job Report

B Farm LD 18-034HN (API 05-001-10095)

S:7 T:1S R:67W Adams CO



Great Western Operating Company, LLC

Great Western Operating Company, LLC | 1801 Broadway, Suite 500 | Denver, CO 80202

Dear Great Western Operating Company,

Thank you for the opportunity to provide cementing services on this well. BJ Services strives to achieve complete customer satisfaction. If you have any questions regarding the services or data provided, please contact BJ Services at any time.

Sincerely,
Jacob Ojeda
Field Engineer I | (763) 516-3012 | jacob.ojeda@bjsservices.com

Field Office 1716 East Allison Rd., Cheyenne WY, 82007
Phone: (307) 638-5585

Sales Office 999 18th St. Suite 1200 Denver, CO 80202
Phone: (281) 408-2361

Cementing Treatment



Start Date	01/01/2018	Well	B-FARM LD 18-034HN
End Date	01/01/2018	County	ADAMS
Client	GREAT WESTERN OPERATING COMPANY, LLC	State/Province	CO
Field Ticket No.	Surface	API	05-001-10095
District	Cheyenne, WY	Type of Job	Surface

WELL GEOMETRY

Type	ID (in)	OD (in)	Wt. (lb/ft)	MD (ft)	TVD (ft)	Excess(%)	Grade	Thread
Open Hole	13.50			1,719.00	1,719.00	25.00		
Casing	8.92	9.63	36.00	1,719.00	1,719.00		J-55	LTC

Shoe Length (ft.): 42

HARDWARE

Bottom Plug Used?	No	Centralizers Used	Yes
Top Plug Used?	No	Landing Collar Depth (ft)	1,658

CIRCULATION PRIOR TO JOB

Circulation Prior to Job	No	Flare Prior to/during the Cement Job	No
Lost Circulation Prior to Cement Job	No	Gas Present	No
Solids Present at End of Circulation	No		

Cementing Treatment



BJ FLUID DETAILS

Fluid Type	Fluid Name	Density (ppg)	Yield (Cu Ft/sk)	H2O Req. (gals/sk)	Vol (sk)	Vol (Cu Ft)	Vol (bbls)
Spacer / Pre Flush / Flush	Water	8.3300					20.0000
Tail Slurry	S100-22	14.5000	1.3901	6.78	760	1,056.0000	188.0000
Displacement Final	Water	8.3300				0.0000	128.2000

Fluid Type	Fluid Name	Component	Concentration	UOM
Tail Slurry	S100-22	CEMENT, ASTM TYPE III	100.00	PCT
Tail Slurry	S100-22	FOAM PREVENTER, FP-13L	0.03	GALS/SK

TREATMENT SUMMARY

Time	Fluid	Rate (bpm)	Fluid Vol. (bbls)	Pipe Pressure (psi)	Annulus Pressure (psi)	Comments
	Water	5.00	20.00			
	S100-22	5.00	188.00			
	Water	5.00	128.20			

DISPLACEMENT AND END OF JOB SUMMARY

Did Float Hold?	Yes	Top Out Cement Spotted	No
Bump Plug	Yes	Lost Circulation During Cement Job	No
Were Returns Planned at Surface	Yes	Volume Cement To Surface	28 bbls

Customer Name Great Western
Well Name B-Farm LD 18-034HN
Job Type Surface

District Cheyenne
Supervisor Wesley Bell
Engineer Jacob Ojeda

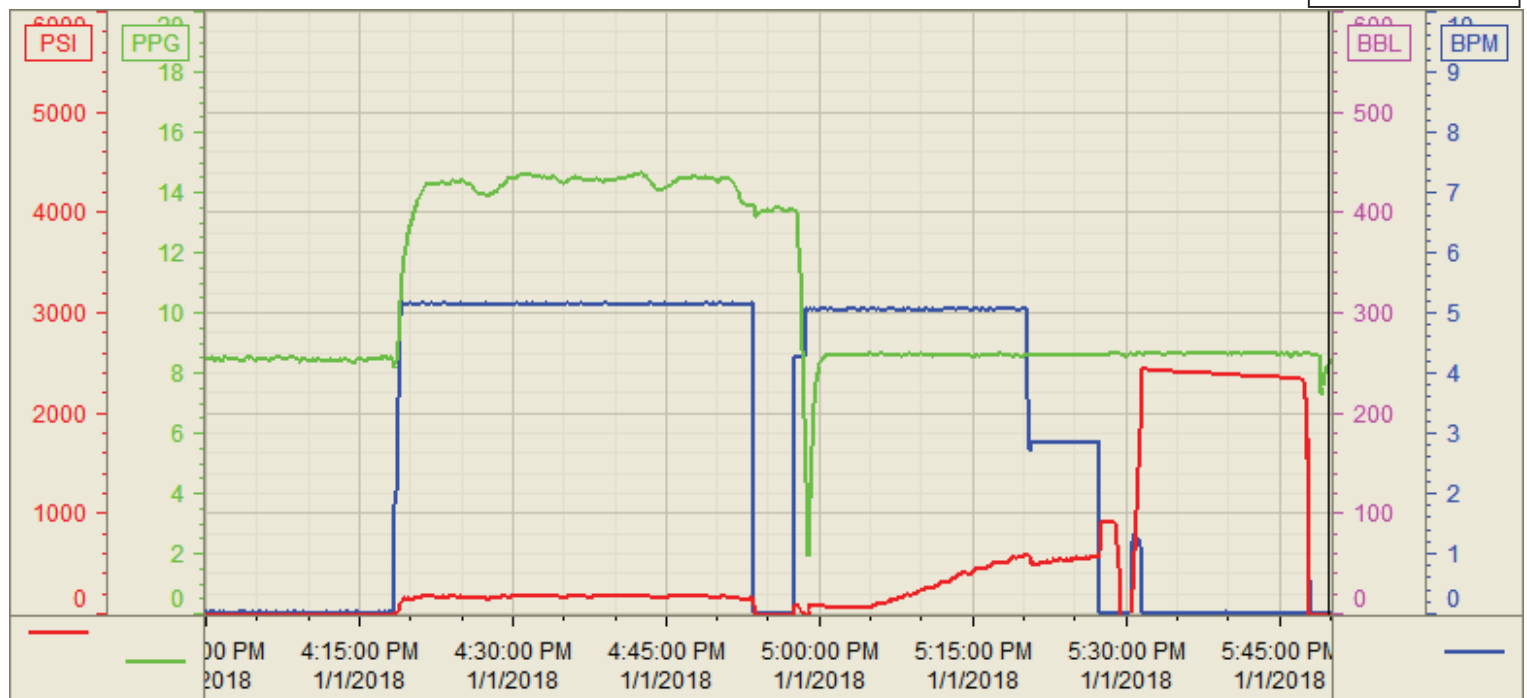


Seq No.	Start Date/Time	Category	Event	Equipment	Event ID	Density (lb/gal)	Pump Rate (bpm)	Pump Vol (bbls)	Pipe Pressure (psi)	Comments
1	1/1/2018 13:00	Mobilization	Arrive on Location		48					Arrive on location, requested time was 15:00
2	1/1/2018 13:10	Operational	Rig Up	Cement Pump Truck	50					Spot and rig in all BJ equipment, rig in all water, bulk, and iron
3	1/1/2018 14:30	StandBy	Customer	Cement Pump Truck	85					Wait for rig to finish running casing
4	1/1/2018 14:40	Operational	Safety Meeting	Cement Pump Truck	53					Hold STEACS briefing with rig crew and pump crew, Review job procedure and job hazards
5	1/1/2018 14:56	Operational	Start Pumping	Cement Pump Truck	55	8.34	2	2	100	Fill lines with fresh water
6	1/1/2018 14:59	Operational	Pressure Test	Cement Pump Truck	54	8.34			3000	Pressure test lines, good test, no leaks
7	1/1/2018 15:02	Operational	Start Pumping	Cement Pump Truck	55	8.34	2	20	100	Start pumping 20bbls fresh water with red dye
8	1/1/2018 15:17	Operational	Pumping Cement	Cement Pump Truck	61	14.5	5	188	250	Pumped 188bbls of cement at 14.5ppg, Y: 1.39, WR: 6.78, 760sks. Started job pumping with unit 105, with in first 10bbls of mixing cement we had to shut down and mix and complete job with pump 102
9	1/1/2018 17:07	Operational	End Pumping	Cement Pump Truck	69					Finish mixing cement
10	1/1/2018 17:10	Operational	Drop Top Plug	Cement Pump Truck	63	8.34				Drop top rubber plug, 9 5/8"
11	1/1/2018 17:11	Operational	Pump Displacement	Cement Pump Truck	64	8.34	5	100	450	100bbls away of fresh water, cement to surface, divert to rig tanks
12	1/1/2018 17:41	Operational	Land Plug	Cement Pump Truck	67	8.34	2.5	28	450	land plug with final circulating pressure of 450psi, bumped to 950psi
13	1/1/2018 17:43	Operational	Check Floats	Cement Pump Truck	68	8.34				Floats hold, 1bbl back
14	1/1/2018 17:45	Operational	Pressure Test	Cement Pump Truck	54	8.34			2400	15min casing test at 2400psi
15	1/1/2018 18:00	Operational	Check Floats	Cement Pump Truck	68				0	Floats hold, 1bbl back
16	1/1/2018 18:05	Operational	Rig Down	Cement Pump Truck	73					Rig out all BJ Equipment
17										
18										
19										
20										
21										
22										
23										
24										
25										
26										
27										
28										
29										
30										
31										
32										
33										
34										

Customer: Great Western
Well Number: LD 18-034HN
Lease Info: B-Farm



Print Date/Time
1/1/2018 5:58:34 PM



	Name	Y value	X value/time stamp	Tag name Y
1	DS - Press (PSI)	-17.4	1/1/2018 5:49:53 PM	Cementer\DS_DISCHARGE_PRESS_DIAL
2	DH - Density (PPG)	8.31	1/1/2018 5:49:53 PM	Cementer\DENSITY2_ACTUAL_RATE
3	Combined Rate	0.00	1/1/2018 5:49:53 PM	Cementer\Flow_Combined
4				
5				

Source: Control1 5:58:29 PM