

talonlpe.com • 866.742.0742



**Nelson C-1
Groundwater Monitoring Report - Third Quarter 2019
Remediation Project No. 9146**

October 23, 2019

Prepared By:
Talon/LPE
1811 East Mulberry Street
Fort Collins, CO 80524

Prepared For:
Whiting Petroleum Corporation

Table of Contents

1	Introduction	1
2	Objective	1
3	Regulatory Framework.....	1
4	Site Characteristics	1
5	Groundwater Monitoring.....	2
6	Product Removal and Gauging.....	3
7	Conclusions & Recommendations	3

Attachment 1 - Figures

Attachment 2 - Tables

Attachment 3 - Analytical Report

Attachment 4 - Field Forms

1 Introduction

Talon/LPE (Talon) was contracted by Whiting Petroleum Corporation (Whiting) to conduct groundwater monitoring activities at the Nelson C1 site (Site) in Weld County, Colorado. The site is located at the northwest quarter of the southeast quarter of Section 18, Township 10 North, Range 58 West, 6th Principal Meridian at 40°50'10.72"N and 103°54'17.73"W (Attachment 1). The site is identified by the State of Colorado Oil and Gas Conservation Commission (COGCC) as Spill/Release Point Facility ID 441208 and as Remediation Project Number 9146. The Site Plan is shown on Figure 1, and the general site location is shown on Figure 6.

2 Objective

The primary objective of this document is to report on Site activities completed during the Third Quarter of 2019 which included groundwater monitoring and product removal.

3 Regulatory Framework

The COGCC has regulatory jurisdiction over oil and natural gas industry operations in the State of Colorado. Section 900 of the COGCC Rules is for Exploration and Production Waste Management. More specifically, Section 910 details the Concentrations and Sampling for Soil and Groundwater rules. The regulatory limits for specific analytes in groundwater are detailed in Table 910-1 and are summarized below.

Compound	COGCC Table 910-1 Groundwater Concentrations
Benzene	0.005 mg/L
Toluene	1.0 mg/L
Ethylbenzene	0.7 mg/L
Xylenes (total)	10 mg/L

4 Site Characteristics

4.1 Geography

The site is located in the Pawnee Grasslands in Weld County, which is the northeastern part of Colorado. The Grasslands are part of the Colorado Eastern Plains and are relatively flat with the exception of the Pawnee Creek which drains into the South Platte River.

4.2 Geologic Summary

Geology in this area consists of Oligocene age soils of the White River Group comprised of the Brule Formation and Chadron Formation. The Brule Formation consists of interbedded

claystones, mudstones, and siltstones of grayish green color. Underlying the Brule Formation is the Chadron Formation comprised of sandstones, claystones, and conglomerates; color varies from yellowish-brown to olive-gray.

4.3 Groundwater

According to the Colorado Division of Water Resources Website, there are no water wells within 1,000-foot radius of the Site.

Depth to groundwater levels, as measured on September 24, 2019, in the 31 groundwater monitoring wells range from 27.29 (MW-8) to 45.15 (MW-29) feet below top of casing (Table 3), which are above-ground by approximately three (3) feet (ft). Several wells had measurable amounts of phase-separated hydrocarbons (PSH) during this monitoring event (Table 3 and Figure 4).

5 Groundwater Monitoring

On September 23, 2019, the 31 monitoring wells were gauged for depth to water and depth to PSH (Table 4). Wells with less than 0.01 feet of PSH were purged of three (3) well casing volumes, or until the wells became dry. On September 24, 2019, Talon personnel collected groundwater samples from these wells. Monitoring wells MW-1, MW-3, MW-4, MW-7, MW-17, MW-20, MW-23, and MW-27 were not sampled due to the presence of PSH greater than 0.01 feet. Figure 5 shows groundwater elevation contours and the hydraulic gradient based on wells with no measurable PSH. The gradient has been calculated to be approximately 0.0051 ft/foot to the southeast between monitoring wells MW-10 and MW-2 and approximately 0.0055 ft/foot to the north-northwest between monitoring wells MW-26 and MW-2.

The collected groundwater samples were submitted to Summit Scientific in Golden, Colorado (Summit) for analysis of benzene, toluene, ethylbenzene, and total xylenes (BTEX) via method SW8260. Purge water generated during development and sampling was placed in poly containers within secondary containment pending off-site disposal.

Table 1 in Attachment 2 summarizes the well completion and survey information. Groundwater analytical results are summarized in Table 2 and shown on Figure 2.

Groundwater laboratory analytical results for benzene ranged from below laboratory detection limits to 12 mg/L (MW-8). Figure 3 shows the isoconcentration contours of dissolved-phase benzene analytical results.

Analytical results for toluene ranged from below laboratory detection limits to 11 mg/L (MW-8). Analytical results for ethylbenzene ranged from below laboratory detection limits to 1.0 mg/L (MW-21). Analytical results for total xylenes ranged from below laboratory detection limits to 6.2 mg/L (MW-8).

A copy of the laboratory reports and chain of custody documentation is included in Attachment 3.

6 Product Removal and Gauging

Talon gauging data from September 24, 2019, reveals the presence of PSH in monitoring wells MW-1, MW-3, MW-4, MW-7, MW-15, MW-17, MW-20, MW-23, and MW-27 ranging from 0.07 ft (MW-15) to 2.0 ft (MW-20) (Table 3). Figure 4 shows contours of PSH thickness.

Product recovery efforts were suspended for two weeks prior to groundwater sampling activities to allow the fluid levels in each well to reach static equilibrium. Following the groundwater sampling event, product recovery efforts resumed. All waste produced by hand-bailing is stored on site in poly containers within secondary containment pending offsite disposal. Table 4 summarizes PSH removal and recovery on a monthly basis. To date, over 558 gallons of free product have been recovered from the site via hand-bailing and approximately 200 gallons of product have been recovered via the skimmer pump system.

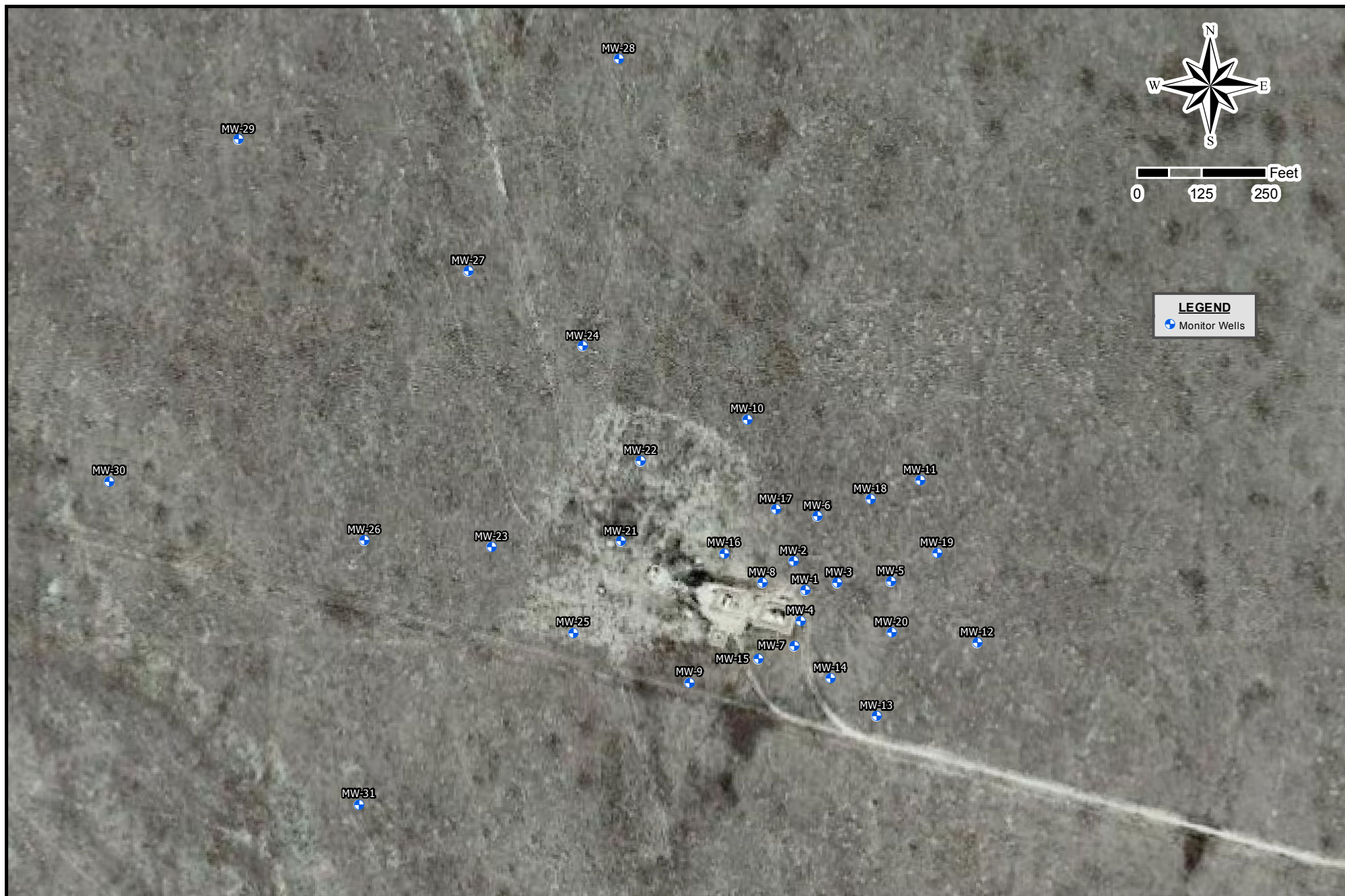
7 Conclusions & Recommendations

During the Third Quarter 2019, Talon collected groundwater samples from 23 of the 31 monitoring wells at the Site. Groundwater laboratory analytical results for benzene ranged from below laboratory detection limits to 12 mg/L (MW-8). Analytical results for toluene ranged from below laboratory detection limits to 11 mg/L (MW-8). Analytical results for ethylbenzene ranged from below laboratory detection limits to 1.0 mg/L (MW-21). Analytical results for total xylenes ranged from below laboratory detection limits to 6.2 mg/L (MW-8). PSH was measured in 9 of the 31 monitoring wells ranging from 0.07 ft (MW-15) to 2.0 ft (MW-20).

The skimmer pump system was installed at the site in Summer 2019 in monitoring wells MW-3, MW-5, MW-7, MW-17, and MW-20, and uninstalled in September 2019 due to freezing temperatures. The Skimmer pump system will be reinstalled at the site again in Summer 2020.

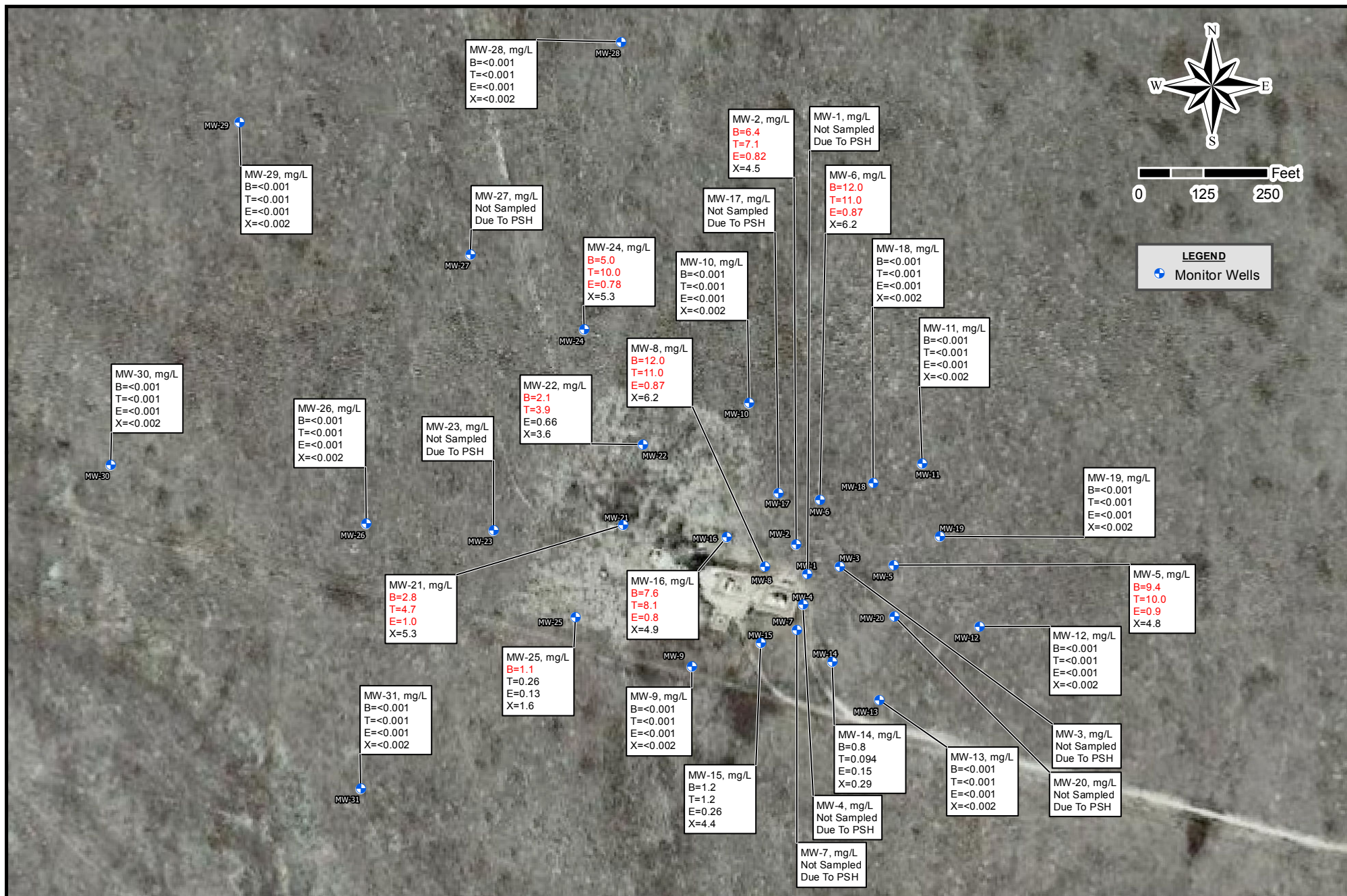
Talon will continue quarterly monitoring and product recovery at the Site. The next groundwater sampling event is anticipated to occur in December 2019.

Attachment 1
Figures



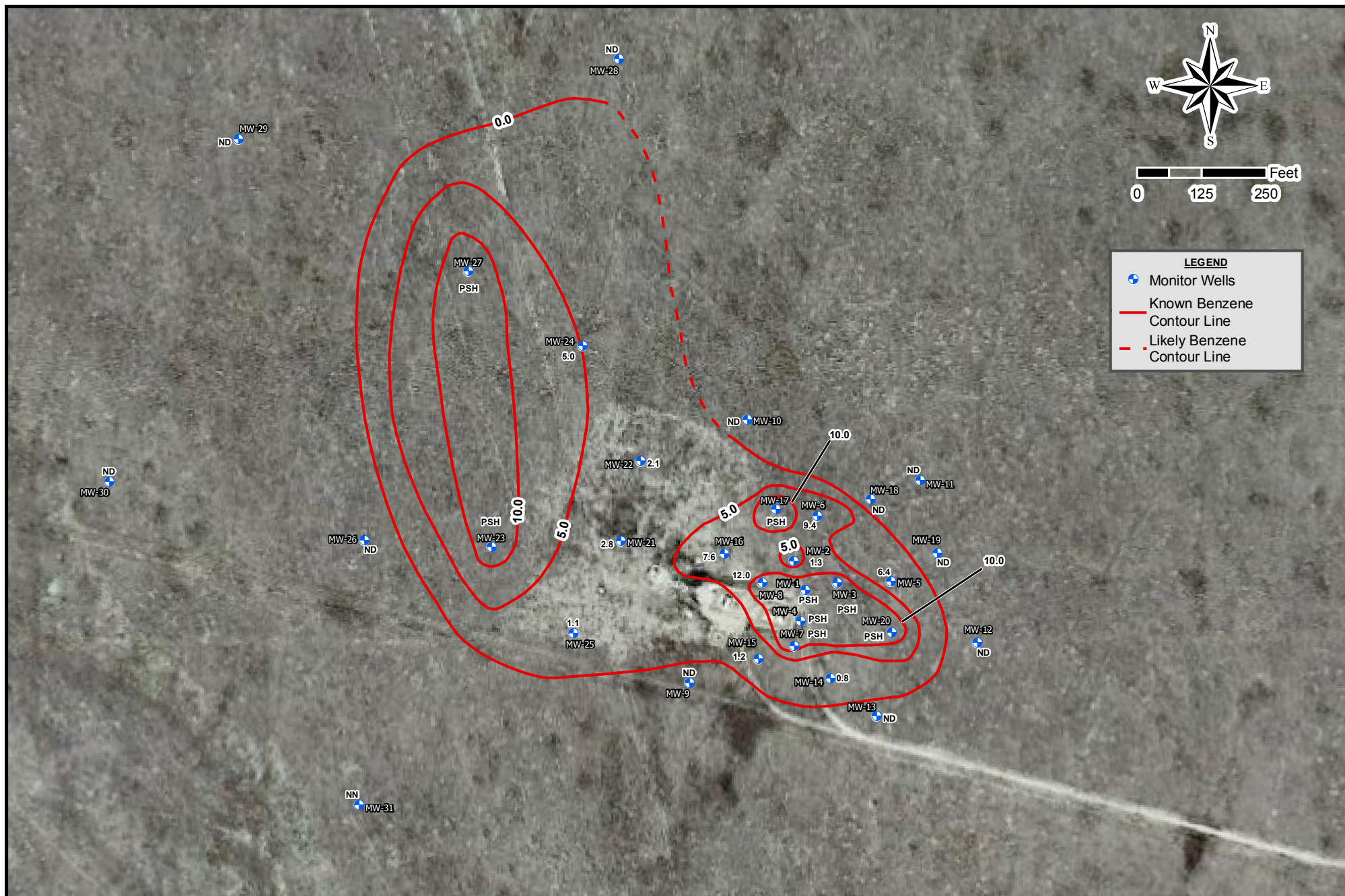
Drafted: 10/14/2019
 1 in = 250 ft
 Drafted By: JAI

Whiting Oil and Gas Corporation
 Nelson C-1
 Weld County, Colorado
 Figure 1 - Site Map



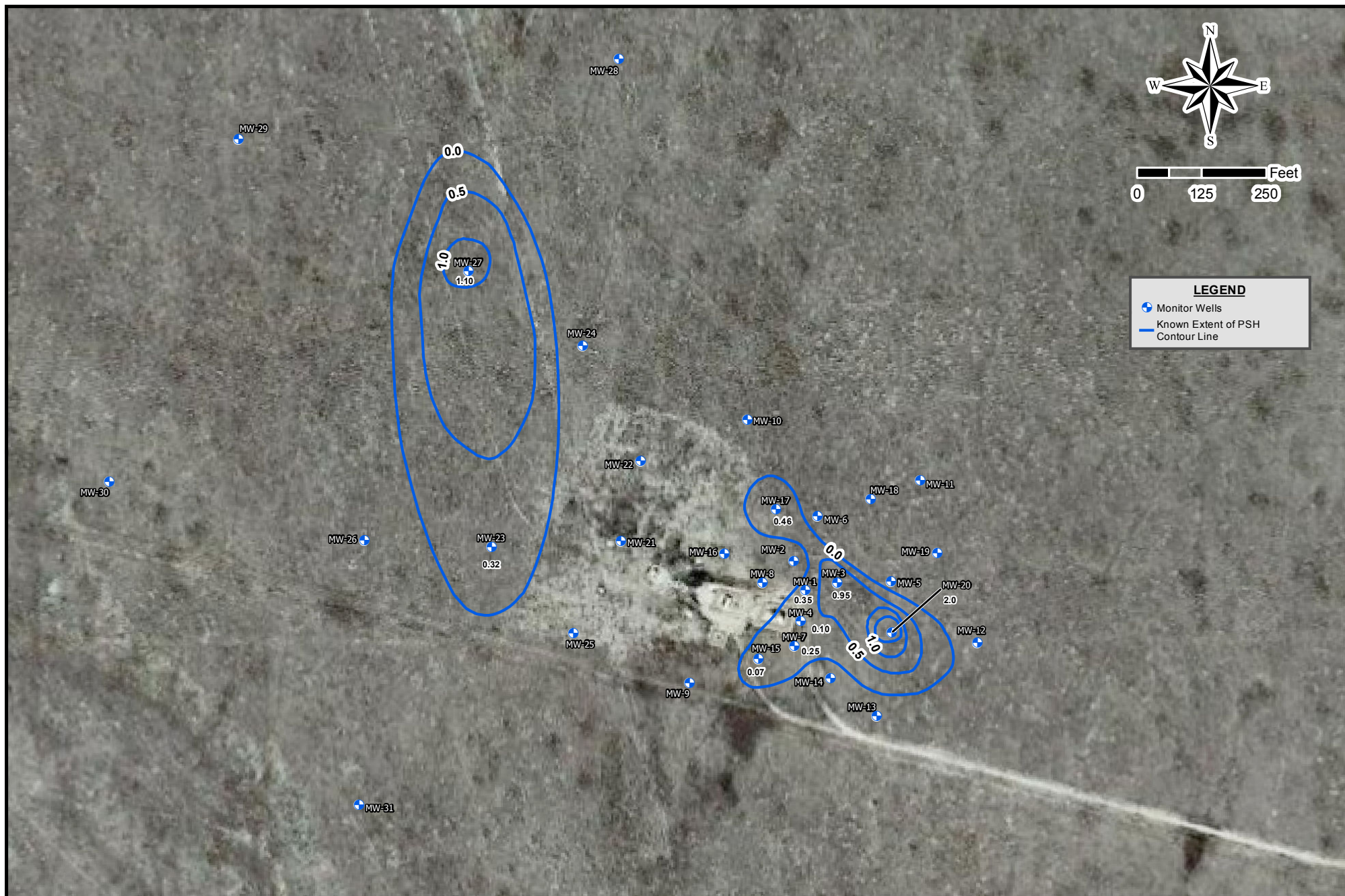
Drafted: 10/22/2019
 1 in = 250 ft
 Drafted By: JAI

Whiting Oil and Gas Corporation
 Nelson C-1
 Weld County, Colorado
 Figure 2 - Groundwater Concentration Map (09/24/2019)



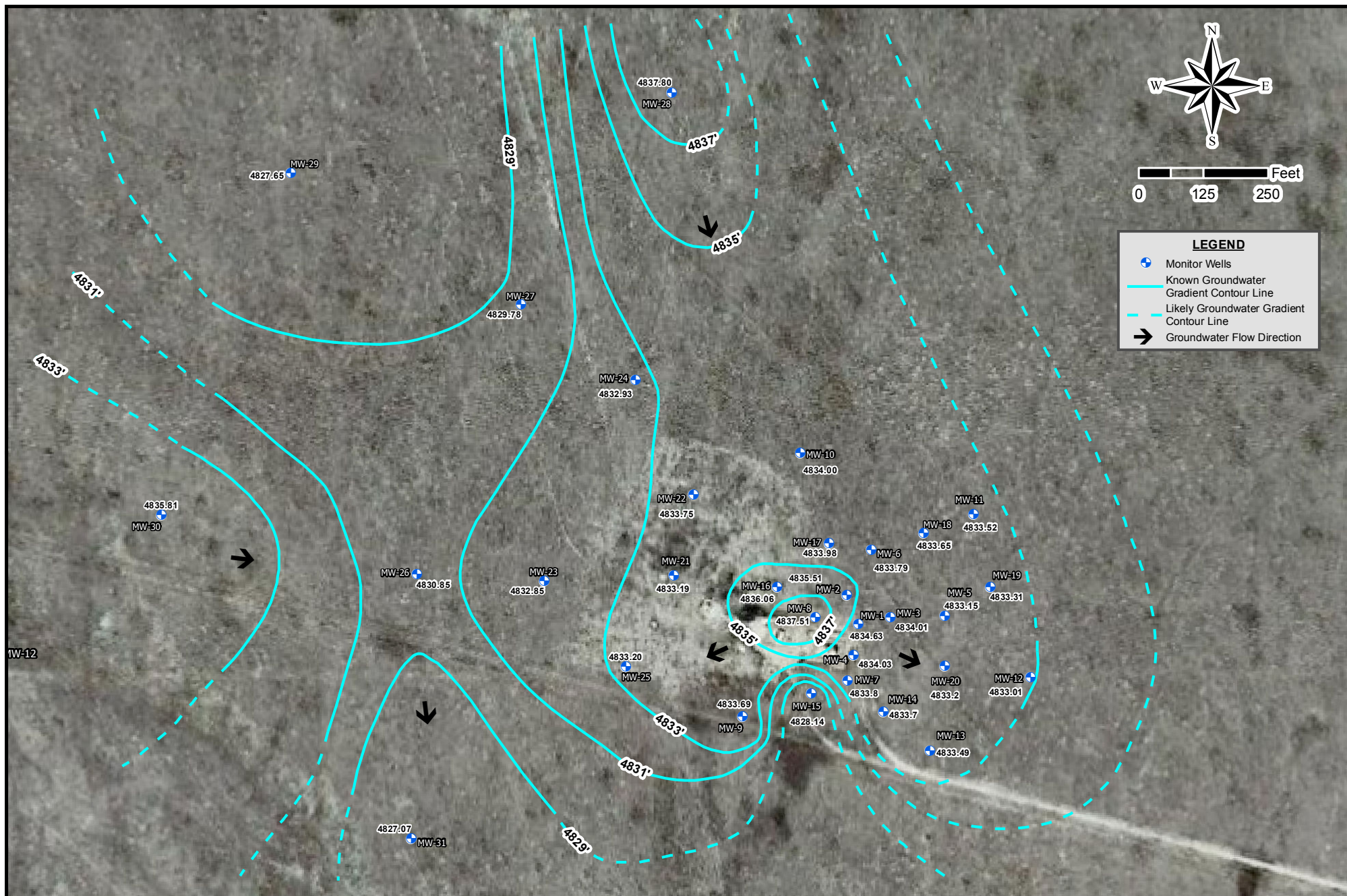
Drafted: 10/22/2019
 1 in = 250 ft
 Drafted By: JAI

Whiting Oil and Gas Corporation
 Nelson C-1
 Weld County, Colorado
 Figure 3 - Benzene Isoconcentration Map (09/24/2019)



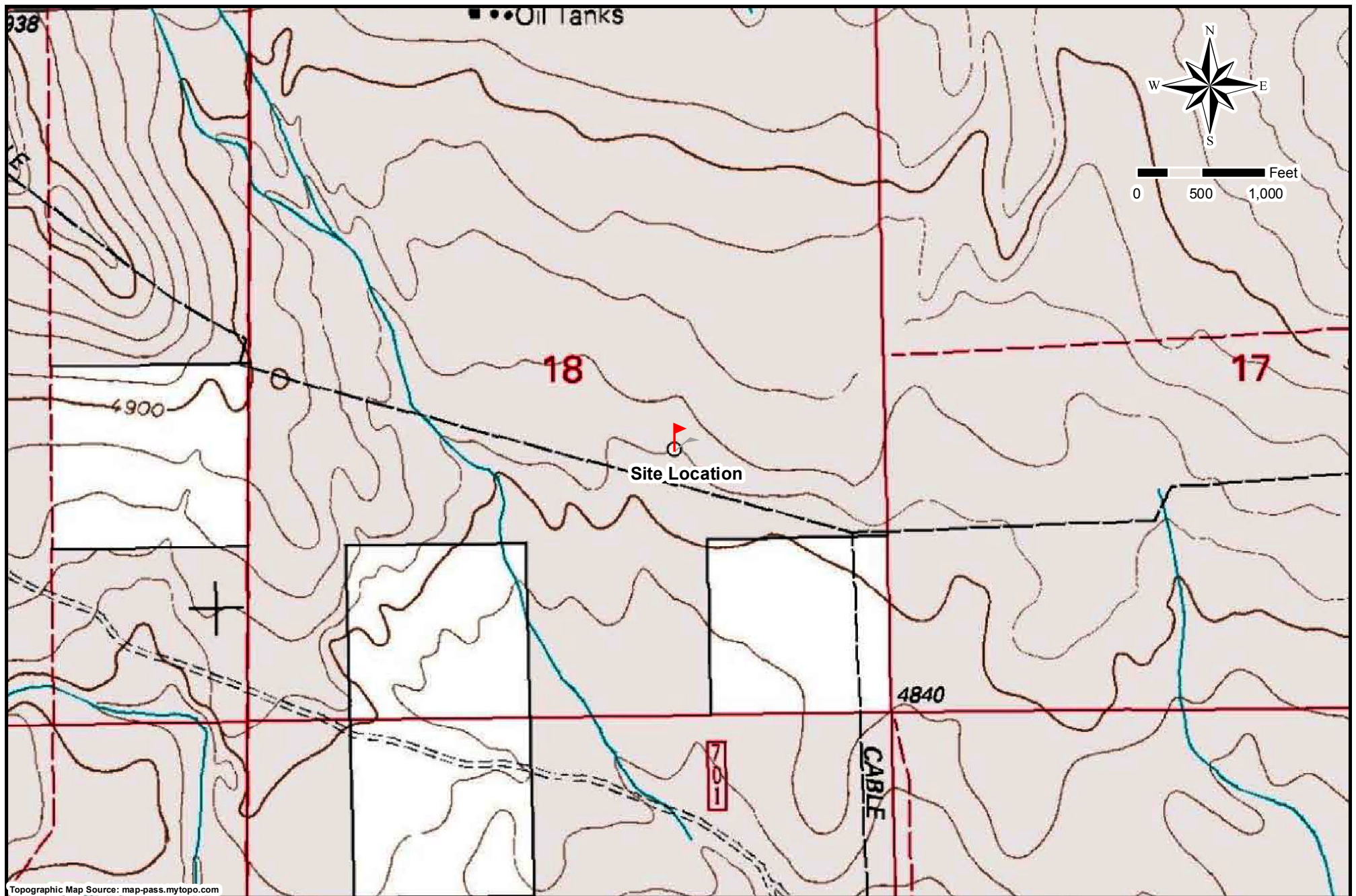
Drafted: 10/14/2019
 1 in = 250 ft
 Drafted By: JAI

Whiting Oil and Gas Corporation
 Nelson C-1
 Weld County, Colorado
 Figure 4 - PSH Thickness Isoconcentration Map (09/24/2019)



Drafted: 10/15/2019
 1 in = 250 ft
 Drafted By: JAI

Whiting Oil and Gas Corporation
 Nelson C-1
 Weld County, Colorado
 Figure 5 - Groundwater Gradient Map (09/24/2019)



Drafted: 10/15/2019
1 in = 1,000 ft
Drafted By: JAI

Whiting Oil and Gas Corporation
Nelson C-1
Weld County, Colorado
Figure 6 - Topographic Map

Attachment 2
Tables



Table 1 - Well Information

**Whiting Oil and Gas Corporation
Nelson C-1
Weld County, Colorado**

Well ID	Latitude	Longitude	Ground Surface Elevation (ft amsl)	TOC Elevation (ft amsl)	Screen Interval (ft bgs)	Total Depth (ft)
MW-1	40.836402	-103.904669	4862.2	4865.3	19.8-39.8	40.38
MW-2	40.836552	-103.904761	4862.6	4865.8	19-39	39.50
MW-3	40.836453	-103.904461	4863.7	4866.9	19.5-39.5	40.00
MW-4	40.836238	-103.904741	4861.1	4864.0	19.5-39.5	40.00
MW-5	40.836419	-103.904070	4865.7	4868.6	20-40	40.00
MW-6	40.836722	-103.904466	4864.7	4867.6	20-45	45.00
MW-7	40.836089	-103.904824	4860.2	4863.2	20-40	40.00
MW-8	40.836469	-103.904957	4861.6	4864.8	20-40	40.00
MW-9	40.835925	-103.905525	4858.5	4861.4	17-32	35.00
MW-10	40.837318	-103.905089	4865.4	4868.3	19-39	39.00
MW-11	40.836977	-103.903889	4869.5	4872.2	19-44	44.00
MW-12	40.836108	-103.903509	4867.7	4870.6	18-38	38.00
MW-13	40.835729	-103.904222	4862.3	4864.9	20-40	40.00
MW-14	40.835936	-103.904540	4861.2	4864.3	20-40	40.00
MW-15	40.836043	-103.905063	4859.4	4861.9	19-34	34.00
MW-16	40.836609	-103.905264	4861.1	4863.9	19-39	39.00
MW-17	40.836837	-103.904898	4863.7	4866.5	19-44	44.00
MW-18	40.836881	-103.904235	4866.5	4869.2	19-44	44.00
MW-19	40.836590	-103.903776	4868.0	4870.8	19-39	39.00
MW-20	40.836173	-103.904105	4865.0	4867.5	19-39	39.00
MW-21	40.836681	-103.905988	4860.8	4863.8	20-40	40.15
MW-22	40.837108	-103.905839	4863.6	4866.7	20-40	39.68
MW-23	40.836655	-103.906884	4863.8	4866.9	14-34	34.00
MW-24	40.837700	-103.906245	4867.4	4870.5	14-44	44.00
MW-25	40.836214	-103.906318	4859.3	4862.3	14-29	29.00
MW-26	40.836693	-103.907788	4863.7	4866.8	14-34	34.00
MW-27	40.838124	-103.906993	4869.0	4872.1	24-44	44.00
MW-28	40.839217	-103.905930	4875.4	4878.2	35-55	55.00
MW-29	40.838818	-103.908562	4869.9	4872.8	30-45	45.00
MW-30	40.837023	-103.909533	4866.0	4868.9	25-35	35.00
MW-31	40.835311	-103.908502	4855.2	4858.2	20-30	30.00

TOC - Top of Casing
ft bgs - Feet Below Ground Surface
ft amsl - Feet Above Mean Sea Level
Updated July 2018



Table 2 - Groundwater Analytical Data

Whiting Oil and Gas Corporation
Nelson C-1
Weld County, Colorado

Sample ID	Lab ID	Date	Concentration (mg/L)			
			Benzene	Toluene	Ethyl-Benzene	Xylenes
COGCC Table 910-1 Concentration Levels			0.005	1	0.7	10
MW-1	1812329-01	12/27/18	12	11	0.9	6.3
	1903272-01	03/26/19	11	8.9	0.76	5.3
	NS	6/11/2019	Not Sampled Due to Presence of PSH			
	NS	09/24/19	Not Sampled Due to Presence of PSH			
MW-2	1812329-02	12/27/18	11	6.5	0.78	6.6
	1903272-02	03/26/19	4.1	3.3	0.32	5
	1906157-01	06/12/19	6.4	2.6	0.51	5.8
	1909308-01	09/24/19	1.3	1.1	0.44	2.3
MW-3	1812346-01	12/28/18	6.4	14		8.8
	NS	3/26/2019	Not Sampled Due to Presence of PSH			
	NS	6/11/2019	Not Sampled Due to Presence of PSH			
	NS	09/24/19	Not Sampled Due to Presence of PSH			
MW-4	1812346-02	12/28/18	8.8	8.6	0.94	5.7
	NS	3/26/2019	Not Sampled Due to Presence of PSH			
	NS	6/11/2019	Not Sampled Due to Presence of PSH			
	NS	09/24/19	Not Sampled Due to Presence of PSH			
MW-5	1812329-03	12/27/18	8.4	9.8	0.96	8.5
	1903272-03	3/26/2019	6	9.6	0.72	4.6
	1906157-02	6/12/2019	8.2	9.3	0.95	5.8
	1909308-02	09/24/19	6.4	7.10	0.82	4.5
MW-6	1812329-04	12/27/18	7.9	9.1	0.57	4.2
	1903272-04	03/26/19	7.7	8.4	0.69	4.8
	NS	06/12/19	Not Sampled Due to Presence of PSH			
	1909308-03	09/24/19	9.4	10.0	0.9	4.8
MW-7	NS	12/28/18	Not Sampled Due to Presence of PSH			
	NS	3/26/2019	Not Sampled Due to Presence of PSH			
	NS	06/12/19	Not Sampled Due to Presence of PSH			
	NS	09/24/19	Not Sampled Due to Presence of PSH			
MW-8	1812329-05	12/27/18	12.0	8.4	0.71	5.4
	1903272-05	03/26/19	10.0	9.7	0.62	5
	1906157-03	06/12/19	12.0		1.1	7.6
	1909308-04	09/24/19	12.0	11.0	0.87	6.2
MW-9	1812329-06	12/27/18	<0.001	<0.001	<0.001	<0.002
	1903272-06	03/26/19	<0.001	<0.001	<0.001	<0.002
	1906134-01	06/11/19	<0.001	<0.001	<0.001	<0.002
	1909308-05	09/24/19	<0.001	<0.001	<0.001	<0.002
MW-10	1812346-03	12/28/18	<0.001	<0.001	<0.001	<0.002
	1903272-07	03/26/19	<0.001	0.0012	<0.001	<0.002
	1906134-02	06/11/19	<0.001	<0.001	<0.001	<0.002
	1909308-06	09/24/19	<0.001	<0.001	<0.001	<0.002
MW-11	1806151-08	06/12/18	<0.001	<0.001	<0.001	<0.002
	1903272-08	03/26/19	<0.001	<0.001	<0.001	<0.002
	1906134-03	06/11/19	<0.001	<0.001	<0.001	<0.002
	1909308-07	09/24/19	<0.001	<0.001	<0.001	<0.002
MW-11 Duplicate	1909308-24	09/24/19	<0.001	<0.001	<0.001	<0.002
MW-12	1809155-07	09/11/18	<0.001	<0.001	<0.001	<0.002
	1812329-08	12/27/18	<0.001	<0.001	<0.001	<0.002
	1903272-09	03/26/19	<0.001	<0.001	<0.001	<0.002
	1906134-04	06/11/19	<0.001	<0.001	<0.001	<0.002
MW-13	1909308-08	09/24/19	<0.001	<0.001	<0.001	<0.002
	1812329-09	12/27/18	<0.001	<0.001	<0.001	<0.002
	1903272-10	03/26/19	<0.001	<0.001	<0.001	<0.002
	1906134-05	06/11/19	<0.001	<0.001	<0.001	<0.002
MW-14	1909308-09	09/24/19	<0.001	<0.001	<0.001	<0.002
	1809155-21	09/11/18	0.5	0.028	0.15	0.19
	1903272-11	03/26/19	0.9	<0.001	0.0014	0.0013
	1906134-06	06/11/19	0.8	0.14	0.16	0.36
MW-14 Duplicate	1909308-10	09/24/19	0.8	0.094	0.15	0.29
	1903272-12	03/26/19	0.96	0.1	0.22	0.48
	NS	09/11/18	Not Sampled Due to Presence of PSH			
	1812346-05	12/28/18	2.2	3.2	0.46	4.3
MW-15	NS	03/26/19	Not Sampled Due to Presence of PSH			
	1906157-04	06/12/19	2.2	3.5	0.76	8.2
	1909308-11	09/24/19	1.2	1.2	0.26	4.4
	1812346-13	12/28/18	9.5	9.3	0.74	5.2
MW-16	1903272-12	03/26/19	8.9	9.2	0.61	4.3
	1906157-05	06/12/19	8.7	11	0.68	5.2
	1909308-12	09/24/19	7.6	8.1	0.8	4.9
	1903272-13	03/26/19	8.4	8.8	0.88	5.3
MW-16 Duplicate	NS	09/11/18	Not Sampled Due to Presence of PSH			
	NS	12/28/18	Not Sampled Due to Presence of PSH			
	NS	03/26/19	Not Sampled Due to Presence of PSH			
	NS	03/26/19	Not Sampled Due to Presence of PSH			
MW-17	NS	09/24/19	Not Sampled Due to Presence of PSH			
	NS	09/11/18	Not Sampled Due to Presence of PSH			
	NS	12/28/18	Not Sampled Due to Presence of PSH			
	NS	03/26/19	Not Sampled Due to Presence of PSH			



Table 2 - Groundwater Analytical Data

Whiting Oil and Gas Corporation
Nelson C-1
Weld County, Colorado

Sample ID	Lab ID	Date	Concentration (mg/L)			
			Benzene	Toluene	Ethyl-Benzene	Xylenes
COGCC Table 910-1 Concentration Levels			0.005	1	0.7	10
MW-18	1812329-11	12/27/18	0.035	0.0021	<0.001	0.003
	1903272-13	03/26/19	0.0018	<0.001	<0.001	<0.002
	1906134-07	06/11/19	0.015	<0.001	<0.001	<0.002
	1909308-13	09/24/19	<0.001	<0.001	<0.001	<0.002
MW-19	1809155-12	12/28/18	<0.001	<0.001	<0.001	<0.002
	1812346-07	03/26/19	<0.001	<0.001	<0.001	<0.002
	1906134-08	06/11/19	<0.001	<0.001	<0.001	<0.002
	1909308-14	09/24/19	<0.001	<0.001	<0.001	<0.002
MW-20	NS	09/11/18	Not Sampled Due to Presence of PSH			
	NS	03/26/19	Not Sampled Due to Presence of PSH			
	NS	06/12/19	Not Sampled Due to Presence of PSH			
	NS	09/24/19	Not Sampled Due to Presence of PSH			
MW-21	1812346-08	12/28/18	5.0	9		8.5
	1903272-15	03/26/19	1.5	3.5	0.74	4.6
	1906134-09	06/11/19	2.5	4.7	0.77	4.1
	1909308-15	09/24/19	2.8	4.7	1.00	5.3
MW-22	1812346-09	12/28/18	1.5	2.1	0.4	2.2
	1903272-16	03/26/19	1.6	2.9	0.52	2.9
	1906134-10	06/11/19	2.4	4.8	0.67	3.8
	1909308-16	09/24/19	2.1	3.9	0.66	3.6
MW-23	NS	12/28/18	Not Sampled Due to Presence of PSH			
	NS	03/26/19	Not Sampled Due to Presence of PSH			
	NS	06/12/19	Not Sampled Due to Presence of PSH			
	NS	09/24/19	Not Sampled Due to Presence of PSH			
MW-24	1812346-10	12/28/18	5.6	11	0.99	6.4
	1903272-17	03/26/19	5.1	11	0.62	4.4
	1906157-06	06/12/19	5.6	13	0.87	6.1
	1909308-17	09/24/19	5.0	10	0.78	5.3
MW-25	1812346-11	12/28/18	3.3	3.9	0.49	5.6
	1903272-18	03/26/19	1.9	1.5	0.18	2.6
	1906134-11	06/11/19	1.5	0.35	0.22	2.7
	1909308-18	09/24/19	1.1	0.26	0.13	1.6
MW-26	1812329-12	12/27/18	<0.001	<0.001	<0.001	<0.002
	1903272-19	03/26/19	<0.001	<0.001	<0.001	<0.002
	1906134-12	06/11/19	<0.001	<0.001	<0.001	<0.002
	1909308-19	09/24/19	<0.001	<0.001	<0.001	<0.002
MW-27	NS	12/28/18	Not Sampled Due to Presence of PSH			
	NS	03/26/19	Not Sampled Due to Presence of PSH			
	NS	06/12/19	Not Sampled Due to Presence of PSH			
	NS	09/24/19	Not Sampled Due to Presence of PSH			
MW-28	1812329-13	12/27/18	<0.001	<0.001	<0.001	<0.002
	1903272-20	03/26/19	<0.001	<0.001	<0.001	<0.002
	1906134-13	06/11/19	<0.001	<0.001	<0.001	<0.002
	1909308-20	09/24/19	<0.001	<0.001	<0.001	<0.002
MW-29	NS	12/28/18	Dry - No Sample Collected			
	1903272-21	03/26/19	<0.001	<0.001	<0.001	<0.002
	1906134-14	06/11/19	<0.001	<0.001	<0.001	<0.002
	1909308-21	09/24/19	<0.001	<0.001	<0.001	<0.002
MW-30	1812329-14	12/27/18	<0.001	<0.001	<0.001	<0.002
	1903272-22	03/26/19	<0.001	<0.001	<0.001	<0.002
	1906134-15	06/11/19	<0.001	<0.001	<0.001	<0.002
	1909308-22	09/24/19	<0.001	<0.001	<0.001	<0.002
MW-31	NS	12/28/18	Dry - No Sample Collected			
	1903272-23	03/26/19	<0.001	<0.001	<0.001	<0.002
	1906134-16	06/11/19	<0.001	<0.001	<0.001	<0.002
	1909308-23	09/24/19	<0.001	<0.001	<0.001	<0.002

mg/L - milligrams per liter

< - Analytical result is less than the reporting limit

COGCC - Colorado Oil and Gas Conservation Commission

NS - Not Sampled

PSH - Phase-Separated Hydrocarbons

Concentration Range for each Analyte	Non Detect/ Low
	Medium
Passing or Failing COGCC Regulations (Font Color)	High/ PSH
	Passing
	Failing



Table 3 - Gauging Data

Whiting Oil and Gas Corporation
Nelson C-1
Weld County, Colorado

Well ID	Top of Casing Elevation (ft amsl)	Total Depth of Well (ft)	Date Gauged	Depth to Product (ft btoc)	DTW (ft btoc)	Product Thickness (ft)	Potentiometric Surface Elevation (ft)
MW-1	4865.30	40.38	11/4/2015	NA	36.49	0.00	4828.81
			12/3/2015	NA	30.88	0.00	4834.42
			12/8/2015	30.62	30.63	0.01	4834.68
			12/22/2015	NA	31.46	0.00	4833.84
			12/30/2015	NA	32.03	0.00	4833.27
			1/13/2016	NA	38.05	0.00	4827.25
			1/21/2016	NA	31.08	0.00	4834.22
			1/27/2016	31.10	31.13	0.03	4834.19
			2/8/2016	31.24	31.29	0.05	4834.05
			2/15/2016	30.90	30.92	0.02	4834.40
			2/16/2016	30.96	30.99	0.03	4834.33
			2/17/2016	NA	32.27	0.00	4833.03
			2/19/2016	NA	31.04	0.00	4834.26
			2/24/2016	NA	31.19	0.00	4834.11
			2/29/2016	NA	30.95	0.00	4834.35
			3/8/2016	NA	32.67	0.00	4832.63
			3/15/2016	NA	32.95	0.00	4832.35
			3/22/2016	NA	33.02	0.00	4832.28
			3/29/2016	NA	33.04	0.00	4832.26
			4/5/2016	NA	33.22	0.00	4832.08
			4/19/2016	NA	31.70	0.00	4833.60
			4/26/2016	NA	32.78	0.00	4832.52
			5/5/2016	NA	31.41	0.00	4833.89
			6/6/2016	31.35	31.36	0.01	4833.95
			6/20/2016	31.38	31.42	0.04	4833.91
			8/11/2016	NA	30.88	0.00	4834.42
			9/15/2016	NA	30.82	0.00	4834.48
			12/15/2016	30.98	30.99	0.01	4834.32
			3/16/2017	31.45	31.49	0.04	4833.84
			6/15/2017	31.91	31.95	0.04	4833.38
			9/14/2017	30.75	30.78	0.03	4834.54
			12/19/2017	NA	30.92	0.00	4834.38
			3/15/2018	30.91	31.02	0.11	4834.37
			6/11/2018	31.11	31.19	0.08	4834.17
			9/10/2018	30.11	30.22	0.11	4835.17
			12/27/2018	30.90	30.99	0.09	4834.38
			3/25/2019	30.83	30.90	0.07	4834.46
			6/10/2019	30.31	30.32	0.01	4834.99
			9/24/2019	30.65	30.75	0.10	4834.63
MW-2	4865.8	39.50	11/4/2015	31.15	31.20	0.05	4834.64
			12/3/2015	31.60	31.62	0.02	4834.20
			12/8/2015	31.50	31.52	0.02	4834.30
			12/22/2015	NA	31.29	0.00	4834.51
			12/30/2015	31.93	31.94	0.01	4833.87
			1/13/2016	NA	31.55	0.00	4834.25
			1/21/2016	NA	31.71	0.00	4834.09
			1/27/2016	NA	31.72	0.00	4834.08
			2/8/2016	31.90	31.92	0.02	4833.90
			2/15/2016	31.53	31.58	0.05	4834.26
			2/16/2016	31.63	31.66	0.03	4834.16
			2/17/2016	32.31	32.35	0.04	4833.48
			2/19/2016	31.68	31.73	0.05	4834.11
			2/24/2016	NA	31.80	0.00	4834.00
			2/29/2016	31.56	31.63	0.07	4834.23
			3/8/2016	NA	32.25	0.00	4833.55
			3/15/2016	NA	32.37	0.00	4833.43
			3/22/2016	NA	32.21	0.00	4833.59
			3/29/2016	NA	32.21	0.00	4833.59
			4/5/2016	NA	32.42	0.00	4833.38
			4/19/2016	32.25	32.27	0.02	4833.55
			4/26/2016	NA	32.36	0.00	4833.44
			5/5/2016	NA	32.12	0.00	4833.68
			6/6/2016	32.10	32.14	0.04	4833.69
			6/20/2016	32.15	32.17	0.02	4833.65
			8/11/2016	NA	31.43	0.00	4834.37
			9/15/2016	31.20	31.27	0.07	4834.59
			12/15/2016	38.31	38.50	0.49	4827.69
			3/16/2017	31.45	31.49	0.04	4834.34
			6/15/2017	32.15	32.20	0.05	4833.64
			9/14/2017	30.78	30.80	0.02	4835.02
			12/19/2017	NA	31.24	0.00	4834.56
			3/15/2018	31.14	31.16	0.02	4834.66
			6/11/2018	NA	30.57	0.00	4835.23
			9/10/2018	NA	29.39	0.00	4836.41
			12/27/2018	NA	30.27	0.00	4835.53
			3/25/2019	NA	24.76	0.00	4841.04
			6/11/2019	NA	27.42	0.00	4838.38
			9/24/2019	NA	30.29	0.00	4835.51



Table 3 - Gauging Data

Whiting Oil and Gas Corporation
Nelson C-1
Weld County, Colorado

Well ID	Top of Casing Elevation (ft amsl)	Total Depth of Well (ft)	Date Gauged	Depth to Product (ft btoc)	DTW (ft btoc)	Product Thickness (ft)	Potentiometric Surface Elevation (ft)
MW-3	4866.9	40.00	11/4/2015	35.61	36.52	0.91	4831.11
			12/3/2015	34.74	35.89	1.15	4831.93
			12/8/2015	34.77	35.62	0.85	4831.96
			12/22/2015	34.44	35.36	0.92	4832.28
			12/30/2015	35.07	35.93	0.86	4831.66
			1/13/2016	37.32	37.82	0.50	4829.48
			1/21/2016	33.70	34.78	1.08	4832.99
			1/27/2016	33.62	35.13	1.51	4832.98
			2/8/2016	33.47	35.88	2.41	4832.96
			2/15/2016	32.95	36.07	3.12	4833.34
			2/16/2016	32.98	36.16	3.18	4833.30
			2/17/2016	35.38	36.50	1.12	4831.30
			2/19/2016	33.80	35.09	1.29	4832.85
			2/24/2016	33.58	35.29	1.71	4832.98
			2/29/2016	33.46	35.37	1.91	4833.07
			3/8/2016	33.68	34.69	1.01	4833.02
			3/15/2016	33.65	33.70	0.05	4833.24
			3/22/2016	34.55	35.55	1.00	4832.15
			3/29/2016	34.48	35.38	0.90	4832.24
			4/5/2016	34.95	35.05	0.10	4831.93
			4/19/2016	34.01	34.71	0.70	4832.75
			4/26/2016	34.45	35.04	0.59	4832.33
			5/5/2016	35.37	36.11	0.74	4831.38
			6/6/2016	33.91	34.82	0.91	4832.81
			6/20/2016	33.75	35.32	1.57	4832.84
			8/11/2016	33.90	34.60	0.70	4832.86
			9/15/2016	33.71	34.41	0.70	4833.05
			12/15/2016	33.79	34.30	0.51	4833.01
			3/16/2017	34.87	35.72	0.85	4831.86
			6/16/2017	33.90	34.70	0.80	4832.84
			9/14/2017	NA	Dry	NA	NA
			12/19/2017	33.40	33.61	0.21	4833.46
			3/15/2018	32.92	33.11	0.19	4833.94
			6/11/2018	33.20	33.88	0.68	4833.57
			9/10/2018	32.60	32.74	0.14	4834.27
			12/27/2018	32.55	33.02	0.47	4834.26
			3/26/2019	33.04	33.45	0.41	4833.78
			6/11/2019	32.70	32.95	0.41	4834.28
			9/24/2019	32.71	33.64	0.93	4834.01
MW-4	4864	40.00	11/4/2015	NA	35.69	0.00	4828.31
			12/3/2015	NA	37.50	0.00	4826.50
			12/8/2015	NA	35.78	0.00	4828.22
			12/22/2015	NA	34.55	0.00	4829.45
			12/30/2015	NA	35.60	0.00	4828.40
			1/13/2016	NA	38.05	0.00	4825.95
			1/21/2016	NA	34.28	0.00	4829.72
			1/27/2016	NA	30.36	0.00	4833.64
			2/8/2016	NA	29.24	0.00	4834.76
			2/15/2016	NA	29.03	0.00	4834.97
			2/16/2016	NA	29.02	0.00	4834.98
			2/17/2016	NA	36.60	0.00	4827.40
			2/19/2016	NA	33.94	0.00	4830.06
			2/24/2016	NA	29.81	0.00	4834.19
			2/29/2016	NA	29.51	0.00	4834.49
			3/8/2016	NA	33.15	0.00	4830.85
			3/15/2016	NA	35.27	0.00	4828.73
			3/22/2016	NA	35.13	0.00	4828.87
			3/29/2016	NA	35.02	0.00	4828.98
			4/5/2016	NA	35.94	0.00	4828.06
			4/19/2016	NA	33.14	0.00	4830.86
			4/26/2016	NA	29.88	0.00	4834.12
			5/5/2016	NA	29.36	0.00	4834.64
			6/6/2016	NA	29.35	0.00	4834.65
			6/20/2016	NA	29.31	0.00	4834.69
			8/11/2016	NA	29.00	0.00	4835.00
			9/15/2016	NA	29.03	0.00	4834.97
			12/15/2016	NA	29.48	0.00	4834.52
			3/16/2017	NA	29.89	0.00	4834.11
			6/15/2017	NA	31.90	0.00	4832.10
			9/14/2017	NA	29.75	0.00	4834.25
			12/19/2017	NA	29.84	0.00	4834.16
			3/15/2018	NA	29.90	0.00	4834.10
			6/11/2018	NA	30.59	0.00	4833.41
			9/10/2018	NA	30.40	0.00	4833.60
			12/27/2018	NA	30.12	0.00	4833.88
			3/25/2019	29.91	30.06	0.15	4834.06
			6/10/2019	29.98	30.35	0.37	4833.95
			9/24/2019	29.90	30.25	0.35	4834.03



Table 3 - Gauging Data

Whiting Oil and Gas Corporation
Nelson C-1
Weld County, Colorado

Well ID	Top of Casing Elevation (ft amsl)	Total Depth of Well (ft)	Date Gauged	Depth to Product (ft btoc)	DTW (ft btoc)	Product Thickness (ft)	Potentiometric Surface Elevation (ft)
MW-5	4868.6	40.00	2/15/2016	40.31	40.41	0.10	4828.27
			2/16/2016	39.95	40.09	0.14	4828.62
			2/17/2016	NA	Dry	NA	NA
			2/19/2016	39.78	40.07	0.29	4828.76
			2/24/2016	38.60	39.19	0.59	4829.88
			2/29/2016	37.66	38.56	0.90	4830.76
			3/8/2016	36.66	37.95	1.29	4831.69
			3/15/2016	36.20	36.35	0.15	4832.37
			3/22/2016	35.95	37.80	1.85	4832.29
			3/29/2016	35.78	36.51	0.73	4832.68
			4/5/2016	NA	35.74	0.00	4832.86
			4/19/2016	35.65	38.30	2.65	4832.43
			4/26/2016	35.48	38.30	2.82	4832.57
			5/5/2016	35.52	35.53	0.01	4833.08
			6/6/2016	39.08	39.85	0.77	4829.37
			6/20/2016	37.22	38.46	1.24	4831.14
			8/11/2016	39.08	39.65	0.57	4829.41
			9/15/2016	37.18	38.37	1.19	4831.19
			12/15/2016	37.05	38.22	1.17	4831.32
			3/16/2017	37.10	38.22	1.12	4831.28
			6/15/2017	36.86	37.90	1.04	4831.54
			9/14/2017	NA	Dry	NA	NA
			12/19/2017	35.87	36.00	0.13	4832.70
			3/15/2018	35.59	35.74	0.15	4832.98
			6/11/2018	35.85	36.05	0.20	4832.71
			9/10/2018	34.74	34.88	0.14	4833.83
			12/27/2018	NA	35.26	0.00	4833.34
			3/25/2019	35.70	35.75	0.05	4832.89
			6/11/2019	NA	35.35	0.00	4833.25
			9/24/2019	NA	35.45	0.00	4833.15
MW-6	4867.6	45.00	2/15/2016	35.32	36.60	1.28	4832.03
			2/16/2016	35.33	36.91	1.58	4831.96
			2/17/2016	35.95	36.14	0.19	4831.61
			2/19/2016	35.55	36.50	0.95	4831.86
			2/24/2016	35.30	37.55	2.25	4831.86
			2/29/2016	34.76	38.19	3.43	4832.17
			3/8/2016	34.44	39.14	4.70	4832.24
			3/15/2016	34.28	38.44	4.16	4832.50
			3/22/2016	33.92	39.90	5.98	4832.51
			3/29/2016	33.88	40.03	6.15	4832.51
			4/5/2016	34.02	39.58	5.56	4832.49
			4/19/2016	34.11	40.91	6.80	4832.16
			4/26/2016	33.80	38.87	5.07	4832.81
			5/5/2016	34.01	40.78	6.77	4832.26
			6/6/2016	33.94	40.80	6.86	4832.32
			6/20/2016	34.72	39.50	4.78	4831.94
			8/11/2016	35.53	36.32	0.79	4831.92
			9/15/2016	35.17	36.99	1.82	4832.07
			12/15/2016	35.11	36.27	1.16	4832.26
			3/16/2017	35.19	36.20	1.01	4832.21
			6/15/2017	35.25	36.20	0.95	4832.16
			9/14/2017	34.81	35.09	0.28	4832.74
			12/19/2017	34.43	34.87	0.44	4833.08
			3/15/2018	33.95	33.97	0.02	4833.65
			6/11/2018	NA	34.00	0.00	4833.60
			9/10/2018	33.50	34.98	1.48	4833.81
			12/27/2018	33.46	33.50	0.04	4834.13
			3/25/2019	33.96	33.99	0.03	4833.63
			6/11/2019	33.65	33.75	0.10	4833.93
			9/24/2019	NA	33.81	0.00	4833.79



Table 3 - Gauging Data

Whiting Oil and Gas Corporation
Nelson C-1
Weld County, Colorado

Well ID	Top of Casing Elevation (ft amsl)	Total Depth of Well (ft)	Date Gauged	Depth to Product (ft btoc)	DTW (ft btoc)	Product Thickness (ft)	Potentiometric Surface Elevation (ft)
MW-7	4863.2	40.00	2/15/2016	31.86	34.29	2.43	4830.86
			2/16/2016	30.00	33.03	3.03	4832.61
			2/17/2016	35.38	36.50	1.12	4827.60
			2/19/2016	30.26	32.22	1.96	4832.56
			2/24/2016	28.01	30.35	2.34	4834.73
			2/29/2016	27.75	29.91	2.16	4835.03
			3/8/2016	27.55	29.73	2.18	4835.22
			3/15/2016	27.61	29.90	2.29	4835.14
			3/22/2016	27.58	29.93	2.35	4835.16
			3/29/2016	27.55	29.95	2.40	4835.18
			4/5/2016	27.75	30.28	2.53	4834.95
			4/19/2016	27.89	27.91	0.02	4835.31
			4/26/2016	27.44	30.06	2.62	4835.25
			5/5/2016	27.81	29.09	1.28	4835.14
			6/6/2016	28.62	30.50	1.88	4834.21
			6/20/2016	28.10	29.61	1.51	4834.80
			8/11/2016	28.68	29.30	0.62	4834.40
			9/15/2016	28.38	29.27	0.89	4834.65
			12/15/2016	28.67	29.32	0.65	4834.40
			3/16/2017	28.96	29.66	0.70	4834.10
			6/15/2017	29.21	29.89	0.68	4833.86
			9/14/2017	NA	Dry	NA	NA
			12/19/2017	28.87	30.56	1.69	4834.00
			3/15/2018	28.90	29.56	0.66	4834.17
			6/11/2018	29.39	29.68	0.29	4833.75
			9/10/2018	29.03	29.36	0.33	4834.11
			12/27/2018	29.07	29.42	0.35	4834.06
			3/25/2019	29.41	29.65	0.24	4833.74
			6/11/1994	29.36	29.72	0.36	4833.77
			9/24/2019	29.35	29.60	0.25	4833.80
MW-8	4864.8	40.00	2/15/2016	NA	35.85	0.00	4828.95
			2/16/2016	NA	34.10	0.00	4830.70
			2/17/2016	NA	35.09	0.00	4829.71
			2/19/2016	NA	32.57	0.00	4832.23
			2/24/2016	NA	28.81	0.00	4835.99
			2/29/2016	NA	27.45	0.00	4837.35
			3/8/2016	NA	27.14	0.00	4837.66
			3/15/2016	NA	27.25	0.00	4837.55
			3/22/2016	NA	33.80	0.00	4831.00
			3/29/2016	NA	27.38	0.00	4837.42
			4/5/2016	27.70	27.73	0.03	4837.09
			4/19/2016	28.04	28.06	0.02	4836.76
			4/26/2016	27.72	27.75	0.03	4837.07
			5/5/2016	28.28	28.30	0.02	4836.52
			6/6/2016	28.46	28.52	0.06	4836.33
			6/20/2016	NA	27.83	0.00	4836.97
			8/11/2016	NA	26.28	0.00	4838.52
			9/15/2016	26.35	26.36	0.01	4838.45
			12/15/2016	NA	27.45	0.00	4837.35
			3/16/2017	28.06	28.07	0.01	4836.74
			6/15/2017	NA	27.15	0.00	4837.65
			9/14/2017	NA	26.04	0.00	4838.76
			12/19/2017	NA	28.24	0.00	4836.56
			3/15/2018	NA	27.81	0.00	4836.99
			6/11/2018	NA	26.67	0.00	4838.13
			9/10/2018	NA	26.45	0.00	4838.35
			12/27/2018	NA	28.03	0.00	4836.77
			3/25/2019	NA	25.31	0.00	4839.49
			6/11/2019	NA	26.60	0.00	4838.20
			9/24/2019	NA	27.29	0.00	4837.51



Table 3 - Gauging Data

Whiting Oil and Gas Corporation
Nelson C-1
Weld County, Colorado

Well ID	Top of Casing Elevation (ft amsl)	Total Depth of Well (ft)	Date Gauged	Depth to Product (ft btoc)	DTW (ft btoc)	Product Thickness (ft)	Potentiometric Surface Elevation (ft)
MW-9	4861.4	35.00	3/15/2016	NA	33.45	0.00	4827.95
			3/21/2016	NA	31.84	0.00	4829.56
			3/22/2016	NA	33.80	0.00	4827.60
			3/29/2016	NA	31.85	0.00	4829.55
			4/5/2016	NA	29.98	0.00	4831.42
			4/19/2016	NA	27.48	0.00	4833.92
			4/26/2016	NA	26.80	0.00	4834.60
			5/5/2016	NA	26.61	0.00	4834.79
			6/6/2016	NA	26.50	0.00	4834.90
			6/20/2016	NA	26.40	0.00	4835.00
			8/11/2016	NA	26.52	0.00	4834.88
			9/15/2016	NA	26.75	0.00	4834.65
			12/15/2016	NA	27.09	0.00	4834.31
			3/16/2017	NA	27.44	0.00	4833.96
			6/15/2017	NA	27.72	0.00	4833.68
			9/14/2017	NA	27.84	0.00	4833.56
			12/19/2017	NA	28.76	0.00	4832.64
			3/15/2018	NA	27.48	0.00	4833.92
			6/11/2018	NA	27.61	0.00	4833.79
			9/10/2018	NA	27.85	0.00	4833.55
			12/27/2018	NA	27.64	0.00	4833.76
			3/26/2019	NA	27.65	0.00	4833.75
			6/10/2019	NA	27.93	0.00	4833.47
			9/24/2019	NA	27.71	0.00	4833.69
MW-10	4868.3	39	3/15/2016	NA	Dry	NA	NA
			3/21/2016	NA	Dry	NA	NA
			3/22/2016	NA	Dry	NA	NA
			3/29/2016	NA	Dry	NA	NA
			4/5/2016	NA	39.12	0.00	4829.18
			4/19/2016	NA	38.19	0.00	4830.11
			4/26/2016	NA	37.78	0.00	4830.52
			5/5/2016	NA	37.58	0.00	4830.72
			6/6/2016	NA	37.35	0.00	4830.95
			6/20/2016	NA	37.32	0.00	4830.98
			8/11/2016	NA	37.20	0.00	4831.10
			9/15/2016	NA	37.13	0.00	4831.17
			12/15/2016	NA	36.89	0.00	4831.41
			3/16/2017	NA	36.75	0.00	4831.55
			6/15/2017	NA	36.41	0.00	4831.89
			9/14/2017	NA	35.78	0.00	4832.52
			12/19/2017	NA	34.63	0.00	4833.67
			3/15/2018	NA	33.60	0.00	4834.70
			6/11/2018	NA	33.71	0.00	4834.59
			9/10/2018	NA	34.22	0.00	4834.08
			12/27/2018	NA	34.11	0.00	4834.19
			3/26/2019	NA	34.15	0.00	4834.15
			6/10/2019	NA	34.46	0.00	4833.84
			9/24/2019	NA	34.30	0.00	4834.00
MW-11	4872.2	44.00	3/15/2016	NA	41.07	0.00	4831.13
			3/21/2016	NA	41.10	0.00	4831.10
			3/22/2016	NA	42.22	0.00	4829.98
			3/29/2016	NA	40.98	0.00	4831.22
			4/5/2016	NA	41.06	0.00	4831.14
			4/19/2016	NA	47.15	0.00	4825.05
			4/26/2016	NA	40.83	0.00	4831.37
			5/5/2016	NA	41.06	0.00	4831.14
			6/6/2016	NA	41.00	0.00	4831.20
			6/20/2016	NA	41.08	0.00	4831.12
			8/11/2016	NA	41.83	0.00	4830.37
			9/15/2016	NA	40.81	0.00	4831.39
			12/15/2016	NA	40.59	0.00	4831.61
			3/16/2017	NA	40.39	0.00	4831.81
			6/15/2017	NA	40.17	0.00	4832.03
			9/14/2017	NA	39.63	0.00	4832.57
			12/19/2017	NA	39.14	0.00	4833.06
			3/15/2018	NA	38.63	0.00	4833.57
			6/11/2018	NA	38.59	0.00	4833.61
			9/10/2018	NA	39.07	0.00	4833.13
			12/27/2018	NA	38.48	0.00	4833.72
			3/25/2019	NA	38.73	0.00	4833.47
			6/10/2019	NA	38.90	0.00	4833.30
			9/24/2019	NA	38.68	0.00	4833.52



Table 3 - Gauging Data

Whiting Oil and Gas Corporation
Nelson C-1
Weld County, Colorado

Well ID	Top of Casing Elevation (ft amsl)	Total Depth of Well (ft)	Date Gauged	Depth to Product (ft btoc)	DTW (ft btoc)	Product Thickness (ft)	Potentiometric Surface Elevation (ft)
MW-12	4870.6	38.00	3/15/2016	NA	Dry	0.00	NA
			3/21/2016	NA	Dry	0.00	NA
			3/22/2016	NA	Dry	0.00	NA
			3/29/2016	NA	Dry	0.00	NA
			4/5/2016	NA	40.09	0.00	4830.51
			4/19/2016	NA	39.46	0.00	4831.14
			4/26/2016	NA	39.28	0.00	4831.32
			5/5/2016	NA	39.16	0.00	4831.44
			6/6/2016	NA	38.94	0.00	4831.66
			6/20/2016	NA	38.91	0.00	4831.69
			8/11/2016	NA	38.83	0.00	4831.77
			9/15/2016	NA	38.78	0.00	4831.82
			12/15/2016	NA	38.67	0.00	4831.93
			3/16/2017	NA	38.61	0.00	4831.99
			6/15/2017	NA	38.45	0.00	4832.15
			9/14/2017	NA	38.35	0.00	4832.25
			12/19/2017	NA	38.10	0.00	4832.50
			3/15/2018	NA	37.88	0.00	4832.72
			6/11/2018	NA	37.72	0.00	4832.88
			9/10/2018	NA	37.72	0.00	4832.88
			12/27/2018	NA	37.60	0.00	4833.00
			3/25/2019	NA	37.66	0.00	4832.94
			6/10/2019	NA	37.58	0.00	4833.02
			9/24/2019	NA	37.59	0.00	4833.01
MW-13	4864.9	40.00	3/15/2016	NA	Dry	0.00	NA
			3/21/2016	NA	38.86	0.00	4826.04
			3/22/2016	NA	39.35	0.00	4825.55
			3/29/2016	NA	37.37	0.00	4827.53
			4/5/2016	NA	35.84	0.00	4829.06
			4/19/2016	NA	33.26	0.00	4831.64
			4/26/2016	NA	32.39	0.00	4832.51
			5/5/2016	NA	31.71	0.00	4833.19
			6/6/2016	NA	30.83	0.00	4834.07
			6/20/2016	NA	30.76	0.00	4834.14
			8/11/2016	NA	31.00	0.00	4833.90
			9/15/2016	NA	30.77	0.00	4834.13
			12/15/2016	NA	31.06	0.00	4833.84
			3/16/2017	NA	31.15	0.00	4833.75
			6/15/2017	NA	31.30	0.00	4833.60
			9/14/2017	NA	31.46	0.00	4833.44
			12/19/2017	NA	32.63	0.00	4832.27
			3/15/2018	NA	31.35	0.00	4833.55
			6/11/2018	NA	31.57	0.00	4833.33
			9/10/2018	NA	31.62	0.00	4833.28
			12/27/2018	NA	31.71	0.00	4833.19
			3/26/2019	NA	31.54	0.00	4833.36
			6/10/2019	NA	31.32	0.00	4833.58
			9/24/2019	NA	31.41	0.00	4833.49
MW-14	4864.3	40.00	3/15/2016	NA	29.62	0.00	4834.68
			3/21/2016	NA	29.55	0.00	4834.75
			3/22/2016	NA	29.35	0.00	4834.95
			3/29/2016	NA	29.37	0.00	4834.93
			4/5/2016	NA	29.64	0.00	4834.66
			4/19/2016	NA	29.85	0.00	4834.45
			4/26/2016	NA	29.51	0.00	4834.79
			5/5/2016	NA	29.79	0.00	4834.51
			6/6/2016	NA	29.73	0.00	4834.57
			6/20/2016	NA	29.94	0.00	4834.36
			8/11/2016	NA	29.71	0.00	4834.59
			9/15/2016	NA	29.80	0.00	4834.50
			12/15/2016	NA	29.87	0.00	4834.43
			3/16/2017	NA	30.29	0.00	4834.01
			6/15/2017	NA	30.65	0.00	4833.65
			9/14/2017	NA	30.42	0.00	4833.88
			12/19/2017	NA	30.63	0.00	4833.67
			3/15/2018	NA	30.11	0.00	4834.19
			6/11/2018	NA	30.50	0.00	4833.80
			9/10/2018	NA	30.31	0.00	4833.99
			12/27/2018	NA	30.15	0.00	4834.15
			3/25/2019	NA	30.77	0.00	4833.53
			6/10/2019	NA	30.61	0.00	4833.69
			9/24/2019	NA	30.60	0.00	4833.70



Table 3 - Gauging Data

Whiting Oil and Gas Corporation
Nelson C-1
Weld County, Colorado

Well ID	Top of Casing Elevation (ft amsl)	Total Depth of Well (ft)	Date Gauged	Depth to Product (ft btoc)	DTW (ft btoc)	Product Thickness (ft)	Potentiometric Surface Elevation (ft)
MW-15	4861.9	34.00	3/15/2016	NA	35.15	0.00	4826.75
			3/21/2016	NA	33.75	0.00	4828.15
			3/22/2016	NA	34.15	0.00	4827.75
			3/29/2016	NA	31.69	0.00	4830.21
			4/5/2016	NA	30.14	0.00	4831.76
			4/19/2016	NA	28.50	0.00	4833.40
			4/26/2016	NA	27.96	0.00	4833.94
			5/5/2016	NA	27.64	0.00	4834.26
			6/6/2016	NA	27.12	0.00	4834.78
			6/20/2016	NA	27.00	0.00	4834.90
			8/11/2016	NA	27.47	0.00	4834.43
			9/15/2016	NA	27.19	0.00	4834.71
			12/15/2016	NA	27.60	0.00	4834.30
			3/16/2017	NA	28.11	0.00	4833.79
			6/15/2017	NA	28.59	0.00	4833.31
			9/14/2017	28.92	28.99	0.07	4832.97
			12/19/2017	NA	29.10	0.00	4832.80
			3/15/2018	29.01	29.05	0.04	4832.88
			6/11/2018	29.32	29.40	0.08	4832.56
			9/10/2018	29.01	29.22	0.21	4832.85
			12/27/2018	29.05	29.10	0.05	4832.84
			3/25/2019	29.52	29.69	0.17	4832.35
			6/11/2019	32.66	32.72	0.06	4829.23
			9/24/2019	33.75	33.82	0.07	4828.14
MW-16	4863.9	39.00	3/15/2016	NA	35.52	0.00	4828.38
			3/21/2016	NA	32.67	0.00	4831.23
			3/22/2016	36.31	36.34	0.03	4827.58
			3/29/2016	NA	30.70	0.00	4833.20
			4/5/2016	NA	29.65	0.00	4834.25
			4/19/2016	NA	29.19	0.00	4834.71
			4/26/2016	NA	28.98	0.00	4834.92
			5/5/2016	NA	29.18	0.00	4834.72
			6/6/2016	NA	29.27	0.00	4834.63
			6/20/2016	NA	29.30	0.00	4834.60
			8/11/2016	NA	29.30	0.00	4834.60
			9/15/2016	NA	29.20	0.00	4834.70
			12/15/2016	NA	29.15	0.00	4834.75
			3/16/2017	NA	29.13	0.00	4834.77
			6/15/2017	NA	29.53	0.00	4834.37
			9/14/2017	NA	29.47	0.00	4834.43
			12/19/2017	NA	30.00	0.00	4833.90
			3/15/2018	NA	28.49	0.00	4835.41
			6/11/2018	NA	28.78	0.00	4835.12
			9/10/2018	NA	27.63	0.00	4836.27
			12/27/2018	NA	28.04	0.00	4835.86
			3/25/2019	NA	28.49	0.00	4835.41
			6/11/2019	NA	27.61	0.00	4836.29
			9/24/2019	NA	27.84	0.00	4836.06
MW-17	4866.5	44.00	3/16/2016	NA	Dry	0.00	NA
			3/21/2016	43.16	Dry	0.84	NA
			3/22/2016	44.45	45.53	1.08	4821.84
			3/29/2016	39.16	43.55	4.39	4826.48
			4/5/2016	36.62	42.32	5.70	4828.76
			4/19/2016	34.22	42.25	8.03	4830.71
			4/26/2016	33.39	42.16	8.77	4831.39
			5/5/2016	33.04	42.05	9.01	4831.69
			6/6/2016	32.71	41.94	9.23	4831.98
			6/20/2016	36.13	43.14	7.01	4829.00
			8/11/2016	44.20	45.25	1.05	4822.09
			9/15/2016	40.19	43.34	3.15	4825.69
			12/15/2016	40.75	43.09	2.34	4825.29
			3/16/2017	38.92	41.12	2.20	4827.15
			6/15/2017	38.00	39.74	1.74	4828.16
			9/14/2017	NA	Dry	NA	NA
			12/19/2017	33.50	35.59	2.09	4832.59
			3/15/2018	32.75	33.05	0.30	4833.69
			6/11/2018	32.81	33.33	0.52	4833.59
			9/10/2018	32.18	32.45	0.27	4834.27
			12/27/2018	32.25	32.55	0.30	4834.19
			3/25/2019	32.45	33.10	0.65	4833.92
			6/11/2019	32.46	33.18	0.72	4833.90
			9/24/2019	32.43	32.89	0.46	4833.98



Table 3 - Gauging Data

Whiting Oil and Gas Corporation
Nelson C-1
Weld County, Colorado

Well ID	Top of Casing Elevation (ft amsl)	Total Depth of Well (ft)	Date Gauged	Depth to Product (ft btoc)	DTW (ft btoc)	Product Thickness (ft)	Potentiometric Surface Elevation (ft)
MW-18	4869.2	44.00	3/16/2016	NA	38.87	0.00	4830.33
			3/21/2016	NA	37.72	0.00	4831.48
			3/22/2016	NA	38.10	0.00	4831.10
			3/29/2016	NA	37.55	0.00	4831.65
			4/5/2016	NA	37.74	0.00	4831.46
			4/19/2016	NA	37.87	0.00	4831.33
			4/26/2016	NA	37.55	0.00	4831.65
			5/5/2016	NA	37.79	0.00	4831.41
			6/6/2016	NA	37.75	0.00	4831.45
			6/20/2016	NA	37.90	0.00	4831.30
			8/11/2016	NA	37.63	0.00	4831.57
			9/15/2016	NA	37.56	0.00	4831.64
			12/15/2016	NA	37.33	0.00	4831.87
			3/16/2017	NA	37.29	0.00	4831.91
			6/15/2017	NA	37.49	0.00	4831.71
			9/14/2017	NA	36.60	0.00	4832.60
			12/19/2017	NA	28.90	0.00	4840.30
			3/15/2018	NA	35.45	0.00	4833.75
			6/11/2018	NA	35.48	0.00	4833.72
			9/10/2018	NA	35.34	0.00	4833.86
			12/27/2018	NA	35.25	0.00	4833.95
			3/25/2019	NA	35.64	0.00	4833.56
			6/10/2019	NA	35.71	0.00	4833.49
			9/24/2019	NA	35.55	0.00	4833.65
MW-19	4870.8	39.00	3/21/2016	NA	Dry	NA	NA
			3/22/2016	NA	Dry	NA	NA
			3/29/2016	NA	Dry	NA	NA
			4/5/2016	NA	Dry	NA	NA
			4/19/2016	NA	39.87	0.00	4830.93
			4/26/2016	NA	39.56	0.00	4831.24
			5/5/2016	NA	39.44	0.00	4831.36
			6/6/2016	NA	39.20	0.00	4831.60
			6/20/2016	NA	39.18	0.00	4831.62
			8/11/2016	NA	39.10	0.00	4831.70
			9/15/2016	NA	39.05	0.00	4831.75
			12/15/2016	NA	38.92	0.00	4831.88
			3/16/2017	NA	38.81	0.00	4831.99
			6/15/2017	NA	38.68	0.00	4832.12
			9/14/2017	NA	38.50	0.00	4832.30
			12/19/2017	NA	38.25	0.00	4832.55
			3/15/2018	NA	37.78	0.00	4833.02
			6/11/2018	NA	38.62	0.00	4832.18
			9/10/2018	NA	38.15	0.00	4832.65
			12/27/2018	NA	37.45	0.00	4833.35
			3/25/2019	NA	37.47	0.00	4833.33
			6/10/2019	NA	37.51	0.00	4833.29
			9/24/2019	NA	37.49	0.00	4833.31
MW-20	4867.5	39.00	3/21/2016	33.95	38.85	4.90	4832.59
			3/22/2016	38.35	40.21	1.86	4828.79
			3/29/2016	38.34	39.15	0.81	4829.00
			4/5/2016	33.52	38.88	5.36	4832.93
			4/19/2016	33.67	38.29	4.62	4832.92
			4/26/2016	33.26	38.05	4.79	4833.30
			5/5/2016	33.60	36.30	2.70	4833.37
			6/6/2016	33.85	38.85	5.00	4832.67
			6/20/2016	33.80	38.30	4.50	4832.82
			8/11/2016	35.02	38.32	3.30	4831.83
			9/15/2016	33.89	37.57	3.68	4832.89
			12/15/2016	34.10	35.90	1.80	4833.05
			3/16/2017	34.27	35.91	1.64	4832.91
			6/15/2017	34.27	35.88	1.61	4832.91
			9/14/2017	NA	Dry	NA	NA
			12/19/2017	34.06	35.65	1.59	4833.13
			3/15/2018	33.95	34.99	1.04	4833.35
			6/11/2018	34.15	34.30	0.15	4833.32
			9/10/2018	33.95	34.88	0.93	4833.37
			12/27/2018	34.02	34.20	0.18	4833.44
			3/25/2019	33.95	34.23	0.28	4833.50
			6/11/2019	33.94	34.15	0.21	4833.52
			9/24/2019	33.91	35.91	2.00	4833.20



Table 3 - Gauging Data

Whiting Oil and Gas Corporation
Nelson C-1
Weld County, Colorado

Well ID	Top of Casing Elevation (ft amsl)	Total Depth of Well (ft)	Date Gauged	Depth to Product (ft btoc)	DTW (ft btoc)	Product Thickness (ft)	Potentiometric Surface Elevation (ft)
MW-21	4863.8	40.15	6/29/2017	NA	Dry	NA	NA
			9/14/2017	30.78	32.29	1.51	4832.72
			12/19/2017	29.33	33.10	3.77	4833.73
			3/15/2018	29.68	29.80	0.12	4834.10
			6/11/2018	29.85	29.90	0.05	4833.94
			9/10/2018	NA	30.16	0.00	4833.64
			12/27/2018	NA	30.24	0.00	4833.56
			3/25/2019	NA	30.29	0.00	4833.51
			6/11/2019	NA	30.31	0.00	4833.49
			9/24/2019	NA	30.61	0.00	4833.19
MW-22	4866.7	39.68	6/29/2017	35.69	35.88	0.19	4830.97
			9/14/2017	33.97	34.09	0.12	4832.71
			12/19/2017	NA	32.17	0.00	4834.53
			3/15/2018	NA	30.65	0.00	4836.05
			6/11/2018	NA	31.54	0.00	4835.16
			9/10/2018	NA	32.20	0.00	4834.50
			12/27/2018	NA	32.42	0.00	4834.28
			3/25/2019	NA	32.84	0.00	4833.86
			6/10/2019	NA	33.12	0.00	4833.58
			9/24/2019	NA	32.95	0.00	4833.75
MW-23	4866.9	35.36	4/20/2018	NA	DRY	NA	NA
			5/1/2018	NA	34.35	0.00	4832.55
			6/11/2018	33.37	33.80	0.43	4833.45
			9/10/2018	33.50	33.98	0.48	4833.31
			12/27/2018	33.45	34.10	0.65	4833.32
			3/25/2019	33.87	34.05	0.18	4832.99
			6/11/2019	33.98	34.23	0.25	4832.87
			9/24/2019	33.99	34.31	0.32	4832.85
			4/20/2018	NA	40.40	0.00	4830.10
			5/1/2018	NA	37.60	0.00	4832.90
MW-24	4870.5	47.32	6/11/2018	NA	36.55	0.00	4833.95
			9/10/2018	NA	36.82	0.00	4833.68
			12/27/2018	NA	36.98	0.00	4833.52
			3/25/2019	NA	37.25	0.00	4833.25
			6/11/2019	NA	37.38	0.00	4833.12
			9/24/2019	NA	37.57	0.00	4832.93
			4/20/2018	NA	DRY	NA	NA
			5/1/2018	NA	29.97	0.00	4832.33
			5/10/2018	NA	29.34	0.00	4832.96
			6/11/2018	NA	28.84	0.00	4833.46
MW-25	4862.3	31.82	9/10/2018	NA	28.95	0.00	4833.35
			12/27/2018	NA	28.89	0.00	4833.41
			3/25/2019	NA	28.85	0.00	4833.45
			6/11/2019	NA	28.82	0.00	4833.48
			9/24/2019	NA	29.10	0.00	4833.20
			4/20/2018	NA	DRY	NA	NA
			5/1/2018	NA	DRY	NA	NA
			5/10/2018	NA	DRY	NA	NA
			6/11/2018	NA	36.05	0.00	4830.75
			9/10/2018	NA	35.79	0.00	4831.01
MW-26	4866.8	36.85	12/27/2018	NA	35.82	0.00	4830.98
			3/25/2019	NA	35.88	0.00	4830.92
			6/10/2019	NA	35.82	0.00	4830.98
			9/24/2019	NA	35.95	0.00	4830.85
			5/1/2018	42.00	42.70	0.70	4829.96
			6/11/2018	41.81	42.38	0.57	4830.18
			9/10/2018	41.70	42.77	1.07	4830.19
			12/27/2018	42.01	42.54	0.53	4829.99
			3/25/2019	42.02	42.59	0.57	4829.97
			6/11/2019	42.06	42.83	0.77	4829.89
MW-27	4872.1	45.32	9/24/2019	42.10	43.20	1.10	4829.78
			6/11/2018	NA	40.33	0.00	4837.87
			9/10/2018	NA	40.55	0.00	4837.65
			12/27/2018	NA	40.51	0.00	4837.69
			3/25/2019	NA	40.77	0.00	4837.43
			6/10/2019	NA	40.76	0.00	4837.44
			9/24/2019	NA	40.40	0.00	4837.80
MW-28	4878.2	56.20	6/11/2018	NA	40.33	0.00	4837.87
			9/10/2018	NA	40.55	0.00	4837.65
			12/27/2018	NA	40.51	0.00	4837.69
			3/25/2019	NA	40.77	0.00	4837.43
			6/10/2019	NA	40.76	0.00	4837.44
			9/24/2019	NA	40.40	0.00	4837.80



Table 3 - Gauging Data

**Whiting Oil and Gas Corporation
Nelson C-1
Weld County, Colorado**

Well ID	Top of Casing Elevation (ft amsl)	Total Depth of Well (ft)	Date Gauged	Depth to Product (ft btoc)	DTW (ft btoc)	Product Thickness (ft)	Potentiometric Surface Elevation (ft)
MW-29	4872.8	46.18	6/11/2018	NA	DRY	NA	NA
			9/10/2018	NA	DRY	NA	NA
			12/27/2018	NA	DRY	NA	NA
			3/25/2019	NA	44.82	0.00	4827.98
			6/10/2019	NA	45.14	0.00	4827.66
			9/24/2019	NA	45.15	0.00	4827.65
MW-30	4868.9	37.16	6/11/2018	NA	33.12	0.00	4835.78
			9/10/2018	NA	32.44	0.00	4836.46
			12/27/2018	NA	32.45	0.00	4836.45
			3/25/2019	NA	32.66	0.00	4836.24
			6/10/2019	NA	32.85	0.00	4836.05
			9/24/2019	NA	33.09	0.00	4835.81
MW-31	4858.2	31.41	6/11/2018	NA	DRY	NA	NA
			9/10/2018	NA	DRY	NA	NA
			12/27/2018	NA	DRY	NA	NA
			3/25/2019	NA	30.56	0.00	4827.64
			6/10/2019	NA	31.24	0.00	4826.96
			9/24/2019	NA	31.13	0.00	4827.07

NA - Not Applicable

NG - Not Gauged

DTW - Depth to Water

ft btoc - Feet Below Top of Casing

ft amsl - Feet Above Mean Sea Level

Product Thickness Scale (ft)	0.00
	10



Table 4 - PSH Removal

Whiting Oil and Gas Corporation
Nelson C-1
Weld County, Colorado

Well ID	Cumulative PSH Recovered (gallons)
MW-1	0.13
MW-2	0.46
MW-3	52.79
MW-4	1.28
MW-5	34.68
MW-6	47.04
MW-7	53.68
MW15	0.72
MW-17	103.55
MW-20	168.40
MW-21	7.77
MW-23	13.54
MW-24	0.03
MW-27	74.65
Site Total	558.72
PSH - Phase Separated Hydrocarbons	

Attachment 3
Analytical Report

Summit Scientific

4653 Table Mountain Drive, Golden, Colorado 80403

303.277.9310

October 21, 2019

Jennifer Galles

Talon/LPE

1811 East Mulberry

Fort Collins, CO 80525

RE: Nelson C-1 3rd Quarter GWM

Enclosed are the results of analyses for samples received by Summit Scientific on 09/24/19 15:00. If you have any questions concerning this report, please feel free to contact me.

Sincerely,

A handwritten signature in black ink, appearing to read 'P. Shrewsbury', with a stylized, cursive script.

Paul Shrewsbury For Ben Shrewsbury

Laboratory Manager



Talon/LPE
1811 East Mulberry
Fort Collins CO, 80525

Project: Nelson C-1 3rd Quarter GWM

Project Number: 701530.020.15

Project Manager: Jennifer Galles

Reported:
10/21/19 11:31

ANALYTICAL REPORT FOR SAMPLES

Sample ID	Laboratory ID	Matrix	Date Sampled	Date Received
MW-2	1909308-01	Water	09/24/19 10:20	09/24/19 15:00
MW-5	1909308-02	Water	09/24/19 10:30	09/24/19 15:00
MW-6	1909308-03	Water	09/24/19 10:35	09/24/19 15:00
MW-8	1909308-04	Water	09/24/19 10:45	09/24/19 15:00
MW-9	1909308-05	Water	09/24/19 10:50	09/24/19 15:00
MW-10	1909308-06	Water	09/24/19 10:55	09/24/19 15:00
MW-11	1909308-07	Water	09/24/19 11:00	09/24/19 15:00
MW-12	1909308-08	Water	09/24/19 11:05	09/24/19 15:00
MW-13	1909308-09	Water	09/24/19 11:10	09/24/19 15:00
MW-14	1909308-10	Water	09/24/19 11:15	09/24/19 15:00
MW-15	1909308-11	Water	09/24/19 11:20	09/24/19 15:00
MW-16	1909308-12	Water	09/24/19 11:25	09/24/19 15:00
MW-18	1909308-13	Water	09/24/19 11:30	09/24/19 15:00
MW-19	1909308-14	Water	09/24/19 11:00	09/24/19 15:00
MW-21	1909308-15	Water	09/24/19 11:40	09/24/19 15:00
MW-22	1909308-16	Water	09/24/19 11:45	09/24/19 15:00
MW-24	1909308-17	Water	09/24/19 11:50	09/24/19 15:00
MW-25	1909308-18	Water	09/24/19 12:20	09/24/19 15:00
MW-26	1909308-19	Water	09/24/19 12:15	09/24/19 15:00
MW-28	1909308-20	Water	09/24/19 12:10	09/24/19 15:00
MW-29	1909308-21	Water	09/24/19 12:05	09/24/19 15:00
MW-30	1909308-22	Water	09/24/19 12:00	09/24/19 15:00
MW-31	1909308-23	Water	09/24/19 11:55	09/24/19 15:00
DUP-A	1909308-24	Water	09/24/19 11:03	09/24/19 15:00
DUP-B	1909308-25	Water	09/24/19 11:28	09/24/19 15:00
DUP-C	1909308-26	Water	09/24/19 12:25	09/24/19 15:00

Summit Scientific

The results in this report apply to the samples analyzed in accordance with the chain of custody document. This analytical report must be reproduced in its entirety.



Talon/LPE
1811 East Mulberry
Fort Collins CO, 80525

Project: Nelson C-1 3rd Quarter GWM
Project Number: 701530.020.15
Project Manager: Jennifer Galles

Reported:
10/21/19 11:31

Summit Scientific

A handwritten signature in black ink, appearing to be 'MSM'.

The results in this report apply to the samples analyzed in accordance with the chain of custody document. This analytical report must be reproduced in its entirety.

Summit Scientific

1909308.1

741 Corporate Circle Suite I ♦ Golden, Colorado 80401
303-277-9310 ♦ 303-374-5933 Fax

Page 1 of 3

Client: Talon/LPE- Bill to Whiting
Address: 1811 East Mulberry
City/State/Zip: Fort Collins, CO 80524
Phone: 970-818-5330 Fax:
Sampler Name: Jleverton, Lkirk, Bbradfield

Project Manager: Jennifer Galles
E-Mail: jgalles@talonlpe.com and jleverton@talonlpe.com
Project Name: Nelson C1 3rd Quarter GWM
Project Number: 701530.020.15

Sample Description	Date Sampled	Time Sampled	Number of Containers	Preservative				Matrix				Analyze For:										Special Instructions			
				HCl	HNO ₃	None	Other (Specify)	Groundwater	Soil	Air - Canister Serial #	Other (Specify)	BTEX													
MW2	9/24/2019	10:20:00	3	x				x					x												
MW5	9/24/2019	10:30:00	3	x				x					x												
MW6	9/24/2019	10:35:00	3	x				x					x												
MW8	9/24/2019	10:45:00	3	x				x					x												
MW9	9/24/2019	10:50:00	3	x				x					x												
MW10	9/24/2019	10:55:00	3	x				x					x												
MW11	9/24/2019	11:00:00	3	x				x					x												
MW12	9/24/2019	11:05:00	3	x				x					x												
MW13	9/24/2019	11:10:00	3	x				x					x												
MW14	9/24/2019	11:15:00	3	x				x					x												

Relinquished by: Ben Bradfield	Date/Time: 9/24/19 15:22	Received by: [Signature]	Date/Time: 9/24/19 15:22	Turn Around Time (Check) Same Day <input type="checkbox"/> 72 Hours <input type="checkbox"/> 24 Hours <input type="checkbox"/> Standard <input checked="" type="checkbox"/> 48 Hours <input type="checkbox"/> Sample Integrity: Temperature Upon Receipt: 4.0 Intact: Yes <input checked="" type="checkbox"/> No <input type="checkbox"/>
Relinquished by:	Date/Time:	Received by:	Date/Time:	
Relinquished by:	Date/Time:	Received in Lab by:	Date/Time:	

Summit Scientific

1909308.2

741 Corporate Circle Suite I ♦ Golden, Colorado 80401
303-277-9310 ♦ 303-374-5933 Fax

Page 2 of 3

Client: Talon/LPE- Bill to Whiting
Address: 1811 East Mulberry
City/State/Zip: Fort Collins, CO 80524
Phone: 970-818-5330 Fax:
Sampler Name: Jleverton, Lkirk, Bbradfield

Project Manager: Jennifer Galles
E-Mail: jgalles@talonlpe.com and jleverton@talonlpe.com
Project Name: Nelson C1 3rd Quarter GWM
Project Number: 701530.020.15

Sample Description	Date Sampled	Time Sampled	Number of Containers	Preservative				Matrix				Analyze For:								Special Instructions				
				HCl	HNO ₃	None	Other (Specify)	Groundwater	Soil	Air - Canister Serial #	Other (Specify)	BTEX												
MW15	9/24/2019	11:20:00	3	x				x					x											
MW16	9/24/2019	11:25:00	3	x				x					x											
MW18	9/24/2019	11:30:00	3	x				x					x											
MW19	9/24/2019	11:00:00	3	x				x					x											
MW21	9/24/2019	11:40:00	3	x				x					x											
MW22	9/24/2019	11:45:00	3	x				x					x											
MW24	9/24/2019	11:50:00	3	x				x					x											
MW25	9/24/2019	12:20:00	3	x				x					x											
MW26	9/24/2019	12:15:00	3	x				x					x											
MW28	9/24/2019	12:10:00	3	x				x					x											
Relinquished by: Ben Bradfield				Date/Time: 9/24/19 15:25				Received by: [Signature]				Date/Time: 9/24/19 15:28				Turn Around Time (Check)								
Relinquished by:				Date/Time:				Received by:				Date/Time:				Same Day <input type="checkbox"/> 72 Hours <input type="checkbox"/>								
Relinquished by:				Date/Time:				Received by:				Date/Time:				24 Hours <input type="checkbox"/> Standard <input checked="" type="checkbox"/>								
Relinquished by:				Date/Time:				Received in Lab by:				Date/Time:				48 Hours <input type="checkbox"/>								Sample Integrity:
Relinquished by:				Date/Time:				Received in Lab by:				Date/Time:				Temperature Upon Receipt: 4.8								
Relinquished by:				Date/Time:				Received in Lab by:				Date/Time:				Intact: Yes <input checked="" type="checkbox"/> No <input type="checkbox"/>								

Summit Scientific

Page 3 of 3

Project Manager:	Jennifer Galles
E-Mail:	jgalles@talonlpe.com and jleverton@talonlpe.com
Project Name:	Nelson C1 3rd Quarter GWM
Project Number:	701530.020.15

				Preservative				Matrix				Analyze For:											
Sample Description	Date Sampled	Time Sampled	Number of Containers	HCl	HNO ₃	None	Other (Specify)	Groundwater	Soil	Air - Canister Serial #	Other (Specify)	BTEX									Special Instructions		
MW29	9/24/2019	12:05:00	3	x				x				x											
MW30	9/24/2019	12:00:00	3	x				x				x											
MW31	9/24/2019	11:55:00	3	x				x				x											
DUPA	9/24/2019	11:03:00	3	x				x				x											
DUPB	9/24/2019	11:28:00	3	x				x				x											
DUPC	9/24/2019	12:25:00	3	x				x				x											
Relinquished by: <i>Ben Broadfield</i> Date/Time: <i>9/24/19 15:25</i>				Received by: <i>[Signature]</i> Date/Time: <i>9/24/19 15:25</i>				Turn Around Time (Check) Same Day <input type="checkbox"/> 72 Hours <input type="checkbox"/> 24 Hours <input type="checkbox"/> Standard <input checked="" type="checkbox"/> 48 Hours <input type="checkbox"/>															
Relinquished by:				Received by:				Sample Integrity: Temperature Upon Receipt: <i>4.8</i> Intact: Yes <input checked="" type="checkbox"/> No <input type="checkbox"/>															
Relinquished by:				Received in Lab by:																			

-Sample Receipt Checklist

S2 Work Order

1909308

Client:

TALON/CP

Client Project ID:

Nelson C1 3RD QUARTER GNM

Shipped Via: (H.D.) P.U./FedEx/UPS/USPS/Other

Airbill #:

Matrix (check all that apply):

☐ Air

☐ Soil/Solid

☒ Water

☐ Other:

(Describe)

Temp (°C)

4.8

Thermometer ID: 61857155-K

	Yes	No	N/A	Comments (if any)
If samples require cooling, was the temperature at 4°C +/- 2°C ⁽¹⁾ ? NOTE: If samples are delivered the same day of sampling, this requirement is met provided that there is evidence that cooling has begun.	<input checked="" type="checkbox"/>			
Were all samples received intact ⁽¹⁾ ?	<input checked="" type="checkbox"/>			
Was adequate sample volume provided ⁽¹⁾ ?	<input checked="" type="checkbox"/>			
If custody seals are present, are they intact ⁽¹⁾ ?			<input checked="" type="checkbox"/>	
Are samples with holding times due within 48 hours sample due within 48 hours present?		<input checked="" type="checkbox"/>		
Is a chain-of-custody (COC) form present and filled out completely ⁽¹⁾ ?	<input checked="" type="checkbox"/>			
Does the COC agree with the number and type of sample bottles received ⁽¹⁾ ?	<input checked="" type="checkbox"/>			
Do the sample IDs on the bottle labels match the COC ⁽¹⁾ ?	<input checked="" type="checkbox"/>			
Is the COC properly relinquished by the client w/ date and time recorded ⁽¹⁾ ?	<input checked="" type="checkbox"/>			
For volatiles in water – is there headspace present? If yes, contact client and note in narrative.		<input checked="" type="checkbox"/>		
Are samples preserved that require preservation (excluding cooling) ⁽¹⁾ ? Note the type of preservative in the Comments column – HCl, H2SO4, NaOH, HNO3, ect	<input checked="" type="checkbox"/>			HCl
If samples are acid preserved for metals, is the pH ≤ 2 ⁽¹⁾ ? Record the pH in Comments.			<input checked="" type="checkbox"/>	
If dissolved metals are requested, were samples field filtered?			<input checked="" type="checkbox"/>	
Additional Comments (if any):				

⁽¹⁾ If NO, then contact the client before proceeding with analysis and note in case narrative.

Custodian Printed Name or Initials

DZ

Signature of Custodian

[Signature]

Date/Time

09/24/19



Talon/LPE
1811 East Mulberry
Fort Collins CO, 80525

Project: Nelson C-1 3rd Quarter GWM

Project Number: 701530.020.15

Project Manager: Jennifer Galles

Reported:
10/21/19 11:31

MW-2
1909308-01 (Water)

Summit Scientific

Volatile Organic Compounds by EPA Method 8260B

Date Sampled: **09/24/19 10:20**

Analyte	Result	Reporting		Dilution	Batch	Prepared	Analyzed	Method	Notes
		Limit	Units						
Benzene	1300	100	ug/l	100	1909369	09/26/19	09/28/19	EPA 8260B	
Toluene	1100	100	"	"	"	"	"	"	
Ethylbenzene	440	100	"	"	"	"	"	"	
Xylenes (total)	2300	200	"	"	"	"	"	"	

Date Sampled: **09/24/19 10:20**

Analyte	Result	Reporting		Dilution	Batch	Prepared	Analyzed	Method	Notes
		Limit	Units						
Surrogate: 1,2-Dichloroethane-d4		90.5 %	23-173		"	"	"	"	
Surrogate: Toluene-d8		95.4 %	20-170		"	"	"	"	
Surrogate: 4-Bromofluorobenzene		94.4 %	21-167		"	"	"	"	

Summit Scientific

The results in this report apply to the samples analyzed in accordance with the chain of custody document. This analytical report must be reproduced in its entirety.



Talon/LPE
1811 East Mulberry
Fort Collins CO, 80525

Project: Nelson C-1 3rd Quarter GWM

Project Number: 701530.020.15

Project Manager: Jennifer Galles

Reported:
10/21/19 11:31

MW-5
1909308-02 (Water)

Summit Scientific

Volatile Organic Compounds by EPA Method 8260B

Date Sampled: **09/24/19 10:30**

Analyte	Result	Reporting	Units	Dilution	Batch	Prepared	Analyzed	Method	Notes
		Limit							
Benzene	6400	100	ug/l	100	1909369	09/26/19	09/29/19	EPA 8260B	
Toluene	7100	100	"	"	"	"	"	"	
Ethylbenzene	820	100	"	"	"	"	"	"	
Xylenes (total)	4500	200	"	"	"	"	"	"	

Date Sampled: **09/24/19 10:30**

Analyte	Result	Reporting	Units	Dilution	Batch	Prepared	Analyzed	Method	Notes
		Limit							
Surrogate: 1,2-Dichloroethane-d4		92.5 %	23-173		"	"	"	"	
Surrogate: Toluene-d8		96.2 %	20-170		"	"	"	"	
Surrogate: 4-Bromofluorobenzene		96.3 %	21-167		"	"	"	"	

Summit Scientific

The results in this report apply to the samples analyzed in accordance with the chain of custody document. This analytical report must be reproduced in its entirety.



Talon/LPE
1811 East Mulberry
Fort Collins CO, 80525

Project: Nelson C-1 3rd Quarter GWM

Project Number: 701530.020.15

Project Manager: Jennifer Galles

Reported:
10/21/19 11:31

MW-6
1909308-03 (Water)

Summit Scientific

Volatile Organic Compounds by EPA Method 8260B

Date Sampled: **09/24/19 10:35**

Analyte	Result	Reporting		Units	Dilution	Batch	Prepared	Analyzed	Method	Notes
		Limit								
Benzene	9400	100		ug/l	100	1909369	09/26/19	09/29/19	EPA 8260B	
Toluene	10000	100		"	"	"	"	"	"	
Ethylbenzene	900	100		"	"	"	"	"	"	
Xylenes (total)	4800	200		"	"	"	"	"	"	

Date Sampled: **09/24/19 10:35**

Analyte	Result	Reporting		Units	Dilution	Batch	Prepared	Analyzed	Method	Notes
		Limit								
Surrogate: 1,2-Dichloroethane-d4		91.3 %		23-173		"	"	"	"	
Surrogate: Toluene-d8		96.2 %		20-170		"	"	"	"	
Surrogate: 4-Bromofluorobenzene		95.6 %		21-167		"	"	"	"	

Summit Scientific

The results in this report apply to the samples analyzed in accordance with the chain of custody document. This analytical report must be reproduced in its entirety.



Talon/LPE
1811 East Mulberry
Fort Collins CO, 80525

Project: Nelson C-1 3rd Quarter GWM

Project Number: 701530.020.15

Project Manager: Jennifer Galles

Reported:
10/21/19 11:31

MW-8
1909308-04 (Water)

Summit Scientific

Volatile Organic Compounds by EPA Method 8260B

Date Sampled: **09/24/19 10:45**

Analyte	Result	Reporting		Units	Dilution	Batch	Prepared	Analyzed	Method	Notes
		Limit								
Benzene	12000	100		ug/l	100	1909369	09/26/19	09/29/19	EPA 8260B	
Toluene	11000	100		"	"	"	"	"	"	
Ethylbenzene	870	100		"	"	"	"	"	"	
Xylenes (total)	6200	200		"	"	"	"	"	"	

Date Sampled: **09/24/19 10:45**

Analyte	Result	Reporting		Units	Dilution	Batch	Prepared	Analyzed	Method	Notes
		Limit								
Surrogate: 1,2-Dichloroethane-d4		91.3 %		23-173		"	"	"	"	
Surrogate: Toluene-d8		96.2 %		20-170		"	"	"	"	
Surrogate: 4-Bromofluorobenzene		95.6 %		21-167		"	"	"	"	

Summit Scientific

The results in this report apply to the samples analyzed in accordance with the chain of custody document. This analytical report must be reproduced in its entirety.



Talon/LPE
1811 East Mulberry
Fort Collins CO, 80525

Project: Nelson C-1 3rd Quarter GWM

Project Number: 701530.020.15

Project Manager: Jennifer Galles

Reported:
10/21/19 11:31

MW-9
1909308-05 (Water)

Summit Scientific

Volatile Organic Compounds by EPA Method 8260B

Date Sampled: **09/24/19 10:50**

Analyte	Result	Reporting	Units	Dilution	Batch	Prepared	Analyzed	Method	Notes
		Limit							
Benzene	ND	1.0	ug/l	1	1909369	09/26/19	09/29/19	EPA 8260B	
Toluene	ND	1.0	"	"	"	"	"	"	
Ethylbenzene	ND	1.0	"	"	"	"	"	"	
Xylenes (total)	ND	2.0	"	"	"	"	"	"	

Date Sampled: **09/24/19 10:50**

Analyte	Result	Reporting	Units	Dilution	Batch	Prepared	Analyzed	Method	Notes
		Limit							
Surrogate: 1,2-Dichloroethane-d4		101 %	23-173		"	"	"	"	
Surrogate: Toluene-d8		95.6 %	20-170		"	"	"	"	
Surrogate: 4-Bromofluorobenzene		97.0 %	21-167		"	"	"	"	

Summit Scientific

The results in this report apply to the samples analyzed in accordance with the chain of custody document. This analytical report must be reproduced in its entirety.



Talon/LPE
1811 East Mulberry
Fort Collins CO, 80525

Project: Nelson C-1 3rd Quarter GWM

Project Number: 701530.020.15

Project Manager: Jennifer Galles

Reported:
10/21/19 11:31

MW-10
1909308-06 (Water)

Summit Scientific

Volatile Organic Compounds by EPA Method 8260B

Date Sampled: **09/24/19 10:55**

Analyte	Result	Reporting	Units	Dilution	Batch	Prepared	Analyzed	Method	Notes
		Limit							
Benzene	ND	1.0	ug/l	1	1909369	09/26/19	09/29/19	EPA 8260B	
Toluene	ND	1.0	"	"	"	"	"	"	
Ethylbenzene	ND	1.0	"	"	"	"	"	"	
Xylenes (total)	ND	2.0	"	"	"	"	"	"	

Date Sampled: **09/24/19 10:55**

Analyte	Result	Reporting	Units	Dilution	Batch	Prepared	Analyzed	Method	Notes
		Limit							
Surrogate: 1,2-Dichloroethane-d4		99.2 %	23-173		"	"	"	"	
Surrogate: Toluene-d8		94.0 %	20-170		"	"	"	"	
Surrogate: 4-Bromofluorobenzene		97.1 %	21-167		"	"	"	"	

Summit Scientific

The results in this report apply to the samples analyzed in accordance with the chain of custody document. This analytical report must be reproduced in its entirety.



Talon/LPE
1811 East Mulberry
Fort Collins CO, 80525

Project: Nelson C-1 3rd Quarter GWM

Project Number: 701530.020.15

Project Manager: Jennifer Galles

Reported:
10/21/19 11:31

MW-11
1909308-07 (Water)

Summit Scientific

Volatile Organic Compounds by EPA Method 8260B

Date Sampled: **09/24/19 11:00**

Analyte	Result	Reporting	Units	Dilution	Batch	Prepared	Analyzed	Method	Notes
		Limit							
Benzene	ND	1.0	ug/l	1	1909369	09/26/19	09/29/19	EPA 8260B	
Toluene	ND	1.0	"	"	"	"	"	"	
Ethylbenzene	ND	1.0	"	"	"	"	"	"	
Xylenes (total)	ND	2.0	"	"	"	"	"	"	

Date Sampled: **09/24/19 11:00**

Analyte	Result	Reporting	Units	Dilution	Batch	Prepared	Analyzed	Method	Notes
		Limit							
Surrogate: 1,2-Dichloroethane-d4		107 %	23-173		"	"	"	"	
Surrogate: Toluene-d8		93.8 %	20-170		"	"	"	"	
Surrogate: 4-Bromofluorobenzene		97.1 %	21-167		"	"	"	"	

Summit Scientific

The results in this report apply to the samples analyzed in accordance with the chain of custody document. This analytical report must be reproduced in its entirety.



Talon/LPE
1811 East Mulberry
Fort Collins CO, 80525

Project: Nelson C-1 3rd Quarter GWM

Project Number: 701530.020.15

Project Manager: Jennifer Galles

Reported:
10/21/19 11:31

MW-12
1909308-08 (Water)

Summit Scientific

Volatile Organic Compounds by EPA Method 8260B

Date Sampled: **09/24/19 11:05**

Analyte	Result	Reporting	Units	Dilution	Batch	Prepared	Analyzed	Method	Notes
		Limit							
Benzene	ND	1.0	ug/l	1	1909369	09/26/19	09/29/19	EPA 8260B	
Toluene	ND	1.0	"	"	"	"	"	"	
Ethylbenzene	ND	1.0	"	"	"	"	"	"	
Xylenes (total)	ND	2.0	"	"	"	"	"	"	

Date Sampled: **09/24/19 11:05**

Analyte	Result	Reporting	Units	Dilution	Batch	Prepared	Analyzed	Method	Notes
		Limit							
Surrogate: 1,2-Dichloroethane-d4		106 %	23-173		"	"	"	"	
Surrogate: Toluene-d8		95.9 %	20-170		"	"	"	"	
Surrogate: 4-Bromofluorobenzene		97.2 %	21-167		"	"	"	"	

Summit Scientific

The results in this report apply to the samples analyzed in accordance with the chain of custody document. This analytical report must be reproduced in its entirety.



Talon/LPE
1811 East Mulberry
Fort Collins CO, 80525

Project: Nelson C-1 3rd Quarter GWM

Project Number: 701530.020.15

Project Manager: Jennifer Galles

Reported:
10/21/19 11:31

MW-13
1909308-09 (Water)

Summit Scientific

Volatile Organic Compounds by EPA Method 8260B

Date Sampled: **09/24/19 11:10**

Analyte	Result	Reporting	Units	Dilution	Batch	Prepared	Analyzed	Method	Notes
		Limit							
Benzene	ND	1.0	ug/l	1	1909369	09/26/19	09/29/19	EPA 8260B	
Toluene	ND	1.0	"	"	"	"	"	"	
Ethylbenzene	ND	1.0	"	"	"	"	"	"	
Xylenes (total)	ND	2.0	"	"	"	"	"	"	

Date Sampled: **09/24/19 11:10**

Analyte	Result	Reporting	Units	Dilution	Batch	Prepared	Analyzed	Method	Notes
		Limit							
Surrogate: 1,2-Dichloroethane-d4		106 %	23-173		"	"	"	"	
Surrogate: Toluene-d8		94.4 %	20-170		"	"	"	"	
Surrogate: 4-Bromofluorobenzene		95.6 %	21-167		"	"	"	"	

Summit Scientific

The results in this report apply to the samples analyzed in accordance with the chain of custody document. This analytical report must be reproduced in its entirety.



Talon/LPE
1811 East Mulberry
Fort Collins CO, 80525

Project: Nelson C-1 3rd Quarter GWM

Project Number: 701530.020.15
Project Manager: Jennifer Galles

Reported:
10/21/19 11:31

MW-14
1909308-10 (Water)

Summit Scientific

Volatile Organic Compounds by EPA Method 8260B

Date Sampled: **09/24/19 11:15**

Analyte	Result	Reporting		Units	Dilution	Batch	Prepared	Analyzed	Method	Notes
		Limit								
Benzene	800	100		ug/l	100	1909369	09/26/19	09/29/19	EPA 8260B	
Toluene	94	1.0		"	1	"	"	"	"	
Ethylbenzene	150	1.0		"	"	"	"	"	"	
Xylenes (total)	290	2.0		"	"	"	"	"	"	

Date Sampled: **09/24/19 11:15**

Analyte	Result	Reporting		Units	Dilution	Batch	Prepared	Analyzed	Method	Notes
		Limit								
Surrogate: 1,2-Dichloroethane-d4		82.3 %		23-173		"	"	"	"	
Surrogate: Toluene-d8		94.0 %		20-170		"	"	"	"	
Surrogate: 4-Bromofluorobenzene		95.7 %		21-167		"	"	"	"	

Summit Scientific

The results in this report apply to the samples analyzed in accordance with the chain of custody document. This analytical report must be reproduced in its entirety.



Talon/LPE
1811 East Mulberry
Fort Collins CO, 80525

Project: Nelson C-1 3rd Quarter GWM

Project Number: 701530.020.15

Project Manager: Jennifer Galles

Reported:
10/21/19 11:31

MW-15
1909308-11 (Water)

Summit Scientific

Volatile Organic Compounds by EPA Method 8260B

Date Sampled: **09/24/19 11:20**

Analyte	Result	Reporting		Units	Dilution	Batch	Prepared	Analyzed	Method	Notes
		Limit								
Benzene	1200	100		ug/l	100	1909369	09/26/19	09/29/19	EPA 8260B	
Toluene	1200	100		"	"	"	"	"	"	
Ethylbenzene	260	100		"	"	"	"	"	"	
Xylenes (total)	4400	200		"	"	"	"	"	"	

Date Sampled: **09/24/19 11:20**

Analyte	Result	Reporting		Units	Dilution	Batch	Prepared	Analyzed	Method	Notes
		Limit								
Surrogate: 1,2-Dichloroethane-d4		99.9 %		23-173		"	"	"	"	
Surrogate: Toluene-d8		95.6 %		20-170		"	"	"	"	
Surrogate: 4-Bromofluorobenzene		94.3 %		21-167		"	"	"	"	

Summit Scientific

The results in this report apply to the samples analyzed in accordance with the chain of custody document. This analytical report must be reproduced in its entirety.



Talon/LPE
1811 East Mulberry
Fort Collins CO, 80525

Project: Nelson C-1 3rd Quarter GWM

Project Number: 701530.020.15

Project Manager: Jennifer Galles

Reported:
10/21/19 11:31

MW-16
1909308-12 (Water)

Summit Scientific

Volatile Organic Compounds by EPA Method 8260B

Date Sampled: **09/24/19 11:25**

Analyte	Result	Reporting		Units	Dilution	Batch	Prepared	Analyzed	Method	Notes
		Limit								
Benzene	7600	100		ug/l	100	1909369	09/26/19	10/02/19	EPA 8260B	
Toluene	8100	100		"	"	"	"	"	"	
Ethylbenzene	800	100		"	"	"	"	"	"	
Xylenes (total)	4900	200		"	"	"	"	"	"	

Date Sampled: **09/24/19 11:25**

Analyte	Result	Reporting		Units	Dilution	Batch	Prepared	Analyzed	Method	Notes
		Limit								
Surrogate: 1,2-Dichloroethane-d4		92.9 %		23-173		"	"	"	"	
Surrogate: Toluene-d8		94.4 %		20-170		"	"	"	"	
Surrogate: 4-Bromofluorobenzene		93.0 %		21-167		"	"	"	"	

Summit Scientific

The results in this report apply to the samples analyzed in accordance with the chain of custody document. This analytical report must be reproduced in its entirety.



Talon/LPE
1811 East Mulberry
Fort Collins CO, 80525

Project: Nelson C-1 3rd Quarter GWM

Project Number: 701530.020.15

Project Manager: Jennifer Galles

Reported:
10/21/19 11:31

MW-18
1909308-13 (Water)

Summit Scientific

Volatile Organic Compounds by EPA Method 8260B

Date Sampled: **09/24/19 11:30**

Analyte	Result	Reporting	Units	Dilution	Batch	Prepared	Analyzed	Method	Notes
		Limit							
Benzene	ND	1.0	ug/l	1	1909369	09/26/19	09/29/19	EPA 8260B	
Toluene	ND	1.0	"	"	"	"	"	"	
Ethylbenzene	ND	1.0	"	"	"	"	"	"	
Xylenes (total)	ND	2.0	"	"	"	"	"	"	

Date Sampled: **09/24/19 11:30**

Analyte	Result	Reporting	Units	Dilution	Batch	Prepared	Analyzed	Method	Notes
		Limit							
Surrogate: 1,2-Dichloroethane-d4		102 %	23-173		"	"	"	"	
Surrogate: Toluene-d8		95.3 %	20-170		"	"	"	"	
Surrogate: 4-Bromofluorobenzene		97.2 %	21-167		"	"	"	"	

Summit Scientific

The results in this report apply to the samples analyzed in accordance with the chain of custody document. This analytical report must be reproduced in its entirety.



Talon/LPE
1811 East Mulberry
Fort Collins CO, 80525

Project: Nelson C-1 3rd Quarter GWM

Project Number: 701530.020.15

Project Manager: Jennifer Galles

Reported:
10/21/19 11:31

MW-19
1909308-14 (Water)

Summit Scientific

Volatile Organic Compounds by EPA Method 8260B

Date Sampled: **09/24/19 11:00**

Analyte	Result	Reporting	Units	Dilution	Batch	Prepared	Analyzed	Method	Notes
		Limit							
Benzene	ND	1.0	ug/l	1	1909369	09/26/19	09/29/19	EPA 8260B	
Toluene	ND	1.0	"	"	"	"	"	"	
Ethylbenzene	ND	1.0	"	"	"	"	"	"	
Xylenes (total)	ND	2.0	"	"	"	"	"	"	

Date Sampled: **09/24/19 11:00**

Analyte	Result	Reporting	Units	Dilution	Batch	Prepared	Analyzed	Method	Notes
		Limit							
Surrogate: 1,2-Dichloroethane-d4		105 %	23-173		"	"	"	"	
Surrogate: Toluene-d8		93.3 %	20-170		"	"	"	"	
Surrogate: 4-Bromofluorobenzene		97.3 %	21-167		"	"	"	"	

Summit Scientific

The results in this report apply to the samples analyzed in accordance with the chain of custody document. This analytical report must be reproduced in its entirety.



Talon/LPE
1811 East Mulberry
Fort Collins CO, 80525

Project: Nelson C-1 3rd Quarter GWM

Project Number: 701530.020.15

Project Manager: Jennifer Galles

Reported:
10/21/19 11:31

MW-21
1909308-15 (Water)

Summit Scientific

Volatile Organic Compounds by EPA Method 8260B

Date Sampled: **09/24/19 11:40**

Analyte	Result	Reporting		Units	Dilution	Batch	Prepared	Analyzed	Method	Notes
		Limit								
Benzene	2800	100		ug/l	100	1909369	09/26/19	10/02/19	EPA 8260B	
Toluene	4700	100		"	"	"	"	"	"	
Ethylbenzene	1000	100		"	"	"	"	"	"	
Xylenes (total)	5300	200		"	"	"	"	"	"	

Date Sampled: **09/24/19 11:40**

Analyte	Result	Reporting		Units	Dilution	Batch	Prepared	Analyzed	Method	Notes
		Limit								
Surrogate: 1,2-Dichloroethane-d4		96.9 %		23-173		"	"	"	"	
Surrogate: Toluene-d8		93.6 %		20-170		"	"	"	"	
Surrogate: 4-Bromofluorobenzene		93.2 %		21-167		"	"	"	"	

Summit Scientific

The results in this report apply to the samples analyzed in accordance with the chain of custody document. This analytical report must be reproduced in its entirety.



Talon/LPE
1811 East Mulberry
Fort Collins CO, 80525

Project: Nelson C-1 3rd Quarter GWM

Project Number: 701530.020.15

Project Manager: Jennifer Galles

Reported:
10/21/19 11:31

MW-22
1909308-16 (Water)

Summit Scientific

Volatile Organic Compounds by EPA Method 8260B

Date Sampled: **09/24/19 11:45**

Analyte	Result	Reporting		Units	Dilution	Batch	Prepared	Analyzed	Method	Notes
		Limit								
Benzene	2100	100		ug/l	100	1909369	09/26/19	10/02/19	EPA 8260B	
Toluene	3900	100		"	"	"	"	"	"	
Ethylbenzene	660	100		"	"	"	"	"	"	
Xylenes (total)	3600	200		"	"	"	"	"	"	

Date Sampled: **09/24/19 11:45**

Analyte	Result	Reporting		Units	Dilution	Batch	Prepared	Analyzed	Method	Notes
		Limit								
Surrogate: 1,2-Dichloroethane-d4		100 %		23-173		"	"	"	"	
Surrogate: Toluene-d8		96.2 %		20-170		"	"	"	"	
Surrogate: 4-Bromofluorobenzene		94.4 %		21-167		"	"	"	"	

Summit Scientific

The results in this report apply to the samples analyzed in accordance with the chain of custody document. This analytical report must be reproduced in its entirety.



Talon/LPE
1811 East Mulberry
Fort Collins CO, 80525

Project: Nelson C-1 3rd Quarter GWM

Project Number: 701530.020.15

Project Manager: Jennifer Galles

Reported:
10/21/19 11:31

MW-24
1909308-17 (Water)

Summit Scientific

Volatile Organic Compounds by EPA Method 8260B

Date Sampled: **09/24/19 11:50**

Analyte	Result	Reporting		Units	Dilution	Batch	Prepared	Analyzed	Method	Notes
		Limit								
Benzene	5000	100		ug/l	100	1909369	09/26/19	10/02/19	EPA 8260B	
Toluene	10000	100		"	"	"	"	"	"	
Ethylbenzene	780	100		"	"	"	"	"	"	
Xylenes (total)	5300	200		"	"	"	"	"	"	

Date Sampled: **09/24/19 11:50**

Analyte	Result	Reporting		Units	Dilution	Batch	Prepared	Analyzed	Method	Notes
		Limit								
Surrogate: 1,2-Dichloroethane-d4		95.6 %		23-173		"	"	"	"	
Surrogate: Toluene-d8		94.1 %		20-170		"	"	"	"	
Surrogate: 4-Bromofluorobenzene		95.6 %		21-167		"	"	"	"	

Summit Scientific

The results in this report apply to the samples analyzed in accordance with the chain of custody document. This analytical report must be reproduced in its entirety.



Talon/LPE
1811 East Mulberry
Fort Collins CO, 80525

Project: Nelson C-1 3rd Quarter GWM

Project Number: 701530.020.15

Project Manager: Jennifer Galles

Reported:
10/21/19 11:31

MW-25
1909308-18 (Water)

Summit Scientific

Volatile Organic Compounds by EPA Method 8260B

Date Sampled: **09/24/19 12:20**

Analyte	Result	Reporting		Units	Dilution	Batch	Prepared	Analyzed	Method	Notes
		Limit								
Benzene	1100	100		ug/l	100	1909369	09/26/19	10/02/19	EPA 8260B	
Toluene	260	100		"	"	"	"	"	"	
Ethylbenzene	130	100		"	"	"	"	"	"	
Xylenes (total)	1600	200		"	"	"	"	"	"	

Date Sampled: **09/24/19 12:20**

Analyte	Result	Reporting		Units	Dilution	Batch	Prepared	Analyzed	Method	Notes
		Limit								
Surrogate: 1,2-Dichloroethane-d4		97.2 %		23-173		"	"	"	"	
Surrogate: Toluene-d8		93.0 %		20-170		"	"	"	"	
Surrogate: 4-Bromofluorobenzene		94.3 %		21-167		"	"	"	"	

Summit Scientific

The results in this report apply to the samples analyzed in accordance with the chain of custody document. This analytical report must be reproduced in its entirety.



Talon/LPE
1811 East Mulberry
Fort Collins CO, 80525

Project: Nelson C-1 3rd Quarter GWM

Project Number: 701530.020.15

Project Manager: Jennifer Galles

Reported:
10/21/19 11:31

MW-26
1909308-19 (Water)

Summit Scientific

Volatile Organic Compounds by EPA Method 8260B

Date Sampled: **09/24/19 12:15**

Analyte	Result	Reporting	Units	Dilution	Batch	Prepared	Analyzed	Method	Notes
		Limit							
Benzene	ND	1.0	ug/l	1	1909369	09/26/19	09/29/19	EPA 8260B	
Toluene	ND	1.0	"	"	"	"	"	"	
Ethylbenzene	ND	1.0	"	"	"	"	"	"	
Xylenes (total)	ND	2.0	"	"	"	"	"	"	

Date Sampled: **09/24/19 12:15**

Analyte	Result	Reporting	Units	Dilution	Batch	Prepared	Analyzed	Method	Notes
		Limit							
Surrogate: 1,2-Dichloroethane-d4		103 %	23-173		"	"	"	"	
Surrogate: Toluene-d8		94.4 %	20-170		"	"	"	"	
Surrogate: 4-Bromofluorobenzene		98.6 %	21-167		"	"	"	"	

Summit Scientific

The results in this report apply to the samples analyzed in accordance with the chain of custody document. This analytical report must be reproduced in its entirety.



Talon/LPE
1811 East Mulberry
Fort Collins CO, 80525

Project: Nelson C-1 3rd Quarter GWM

Project Number: 701530.020.15

Project Manager: Jennifer Galles

Reported:
10/21/19 11:31

MW-28
1909308-20 (Water)

Summit Scientific

Volatile Organic Compounds by EPA Method 8260B

Date Sampled: **09/24/19 12:10**

Analyte	Result	Reporting	Units	Dilution	Batch	Prepared	Analyzed	Method	Notes
		Limit							
Benzene	ND	1.0	ug/l	1	1909369	09/26/19	09/29/19	EPA 8260B	
Toluene	ND	1.0	"	"	"	"	"	"	
Ethylbenzene	ND	1.0	"	"	"	"	"	"	
Xylenes (total)	ND	2.0	"	"	"	"	"	"	

Date Sampled: **09/24/19 12:10**

Analyte	Result	Reporting	Units	Dilution	Batch	Prepared	Analyzed	Method	Notes
		Limit							
Surrogate: 1,2-Dichloroethane-d4		103 %	23-173		"	"	"	"	
Surrogate: Toluene-d8		94.9 %	20-170		"	"	"	"	
Surrogate: 4-Bromofluorobenzene		95.9 %	21-167		"	"	"	"	

Summit Scientific

The results in this report apply to the samples analyzed in accordance with the chain of custody document. This analytical report must be reproduced in its entirety.



Talon/LPE
1811 East Mulberry
Fort Collins CO, 80525

Project: Nelson C-1 3rd Quarter GWM

Project Number: 701530.020.15

Project Manager: Jennifer Galles

Reported:
10/21/19 11:31

MW-29
1909308-21 (Water)

Summit Scientific

Volatile Organic Compounds by EPA Method 8260B

Date Sampled: **09/24/19 12:05**

Analyte	Result	Reporting	Units	Dilution	Batch	Prepared	Analyzed	Method	Notes
		Limit							
Benzene	ND	1.0	ug/l	1	1909387	09/26/19	09/27/19	EPA 8260B	
Toluene	ND	1.0	"	"	"	"	"	"	
Ethylbenzene	ND	1.0	"	"	"	"	"	"	
Xylenes (total)	ND	2.0	"	"	"	"	"	"	

Date Sampled: **09/24/19 12:05**

Analyte	Result	Reporting	Units	Dilution	Batch	Prepared	Analyzed	Method	Notes
		Limit							
Surrogate: 1,2-Dichloroethane-d4		107 %	23-173		"	"	"	"	
Surrogate: Toluene-d8		94.8 %	20-170		"	"	"	"	
Surrogate: 4-Bromofluorobenzene		95.9 %	21-167		"	"	"	"	

Summit Scientific

The results in this report apply to the samples analyzed in accordance with the chain of custody document. This analytical report must be reproduced in its entirety.



Talon/LPE
1811 East Mulberry
Fort Collins CO, 80525

Project: Nelson C-1 3rd Quarter GWM

Project Number: 701530.020.15

Project Manager: Jennifer Galles

Reported:
10/21/19 11:31

MW-30
1909308-22 (Water)

Summit Scientific

Volatile Organic Compounds by EPA Method 8260B

Date Sampled: **09/24/19 12:00**

Analyte	Result	Reporting	Units	Dilution	Batch	Prepared	Analyzed	Method	Notes
		Limit							
Benzene	ND	1.0	ug/l	1	1909387	09/26/19	09/28/19	EPA 8260B	
Toluene	ND	1.0	"	"	"	"	"	"	
Ethylbenzene	ND	1.0	"	"	"	"	"	"	
Xylenes (total)	ND	2.0	"	"	"	"	"	"	

Date Sampled: **09/24/19 12:00**

Analyte	Result	Reporting	Units	Dilution	Batch	Prepared	Analyzed	Method	Notes
		Limit							
Surrogate: 1,2-Dichloroethane-d4		109 %	23-173		"	"	"	"	
Surrogate: Toluene-d8		95.3 %	20-170		"	"	"	"	
Surrogate: 4-Bromofluorobenzene		96.8 %	21-167		"	"	"	"	

Summit Scientific

The results in this report apply to the samples analyzed in accordance with the chain of custody document. This analytical report must be reproduced in its entirety.



Talon/LPE
1811 East Mulberry
Fort Collins CO, 80525

Project: Nelson C-1 3rd Quarter GWM

Project Number: 701530.020.15

Project Manager: Jennifer Galles

Reported:
10/21/19 11:31

MW-31
1909308-23 (Water)

Summit Scientific

Volatile Organic Compounds by EPA Method 8260B

Date Sampled: **09/24/19 11:55**

Analyte	Result	Reporting	Units	Dilution	Batch	Prepared	Analyzed	Method	Notes
		Limit							
Benzene	ND	1.0	ug/l	1	1909387	09/26/19	09/28/19	EPA 8260B	
Toluene	ND	1.0	"	"	"	"	"	"	
Ethylbenzene	ND	1.0	"	"	"	"	"	"	
Xylenes (total)	ND	2.0	"	"	"	"	"	"	

Date Sampled: **09/24/19 11:55**

Analyte	Result	Reporting	Units	Dilution	Batch	Prepared	Analyzed	Method	Notes
		Limit							
Surrogate: 1,2-Dichloroethane-d4		105 %	23-173		"	"	"	"	
Surrogate: Toluene-d8		95.6 %	20-170		"	"	"	"	
Surrogate: 4-Bromofluorobenzene		97.6 %	21-167		"	"	"	"	

Summit Scientific

The results in this report apply to the samples analyzed in accordance with the chain of custody document. This analytical report must be reproduced in its entirety.



Talon/LPE
1811 East Mulberry
Fort Collins CO, 80525

Project: Nelson C-1 3rd Quarter GWM

Project Number: 701530.020.15

Project Manager: Jennifer Galles

Reported:
10/21/19 11:31

DUP-A
1909308-24 (Water)

Summit Scientific

Volatile Organic Compounds by EPA Method 8260B

Date Sampled: **09/24/19 11:03**

Analyte	Result	Reporting	Units	Dilution	Batch	Prepared	Analyzed	Method	Notes
		Limit							
Benzene	ND	1.0	ug/l	1	1909387	09/26/19	09/28/19	EPA 8260B	
Toluene	ND	1.0	"	"	"	"	"	"	
Ethylbenzene	ND	1.0	"	"	"	"	"	"	
Xylenes (total)	ND	2.0	"	"	"	"	"	"	

Date Sampled: **09/24/19 11:03**

Analyte	Result	Reporting	Units	Dilution	Batch	Prepared	Analyzed	Method	Notes
		Limit							
Surrogate: 1,2-Dichloroethane-d4		103 %	23-173		"	"	"	"	
Surrogate: Toluene-d8		94.9 %	20-170		"	"	"	"	
Surrogate: 4-Bromofluorobenzene		97.2 %	21-167		"	"	"	"	

Summit Scientific

The results in this report apply to the samples analyzed in accordance with the chain of custody document. This analytical report must be reproduced in its entirety.



Talon/LPE
1811 East Mulberry
Fort Collins CO, 80525

Project: Nelson C-1 3rd Quarter GWM

Project Number: 701530.020.15

Project Manager: Jennifer Galles

Reported:
10/21/19 11:31

DUP-B
1909308-25 (Water)

Summit Scientific

Volatile Organic Compounds by EPA Method 8260B

Date Sampled: **09/24/19 11:28**

Analyte	Result	Reporting		Units	Dilution	Batch	Prepared	Analyzed	Method	Notes
		Limit								
Benzene	960	100		ug/l	100	1909387	09/26/19	09/28/19	EPA 8260B	
Toluene	100	1.0		"	1	"	"	"	"	
Ethylbenzene	220	100		"	100	"	"	"	"	
Xylenes (total)	480	200		"	"	"	"	"	"	

Date Sampled: **09/24/19 11:28**

Analyte	Result	Reporting		Units	Dilution	Batch	Prepared	Analyzed	Method	Notes
		Limit								
Surrogate: 1,2-Dichloroethane-d4		100 %		23-173		"	"	"	"	
Surrogate: Toluene-d8		96.5 %		20-170		"	"	"	"	
Surrogate: 4-Bromofluorobenzene		98.1 %		21-167		"	"	"	"	

Summit Scientific

The results in this report apply to the samples analyzed in accordance with the chain of custody document. This analytical report must be reproduced in its entirety.



Talon/LPE
1811 East Mulberry
Fort Collins CO, 80525

Project: Nelson C-1 3rd Quarter GWM

Project Number: 701530.020.15

Project Manager: Jennifer Galles

Reported:
10/21/19 11:31

DUP-C
1909308-26 (Water)

Summit Scientific

Volatile Organic Compounds by EPA Method 8260B

Date Sampled: **09/24/19 12:25**

Analyte	Result	Reporting		Units	Dilution	Batch	Prepared	Analyzed	Method	Notes
		Limit								
Benzene	8400	100		ug/l	100	1909387	09/26/19	09/28/19	EPA 8260B	
Toluene	8800	100		"	"	"	"	"	"	
Ethylbenzene	880	100		"	"	"	"	"	"	
Xylenes (total)	5300	200		"	"	"	"	"	"	

Date Sampled: **09/24/19 12:25**

Analyte	Result	Reporting		Units	Dilution	Batch	Prepared	Analyzed	Method	Notes
		Limit								
Surrogate: 1,2-Dichloroethane-d4		93.5 %		23-173		"	"	"	"	
Surrogate: Toluene-d8		95.7 %		20-170		"	"	"	"	
Surrogate: 4-Bromofluorobenzene		95.5 %		21-167		"	"	"	"	

Summit Scientific

The results in this report apply to the samples analyzed in accordance with the chain of custody document. This analytical report must be reproduced in its entirety.



Talon/LPE
1811 East Mulberry
Fort Collins CO, 80525

Project: Nelson C-1 3rd Quarter GWM

Project Number: 701530.020.15

Project Manager: Jennifer Galles

Reported:
10/21/19 11:31

Volatile Organic Compounds by EPA Method 8260B - Quality Control

Summit Scientific

Analyte	Reporting			Spike	Source		%REC		RPD	
	Result	Limit	Units	Level	Result	%REC	Limits	RPD	Limit	Notes

Batch 1909369 - EPA 5030 Water MS

Blank (1909369-BLK1)

Prepared: 09/26/19 Analyzed: 09/28/19

Benzene	ND	1.0	ug/l							
Toluene	ND	1.0	"							
Ethylbenzene	ND	1.0	"							
Xylenes (total)	ND	2.0	"							
Surrogate: 1,2-Dichloroethane-d4	13.8		"	13.3		104	23-173			
Surrogate: Toluene-d8	12.8		"	13.3		96.2	20-170			
Surrogate: 4-Bromofluorobenzene	13.2		"	13.3		98.8	21-167			

LCS (1909369-BS1)

Prepared: 09/26/19 Analyzed: 09/28/19

Benzene	33.7	1.0	ug/l	33.3		101	51-132			
Toluene	35.4	1.0	"	33.3		106	51-138			
Ethylbenzene	39.4	1.0	"	33.3		118	58-146			
m,p-Xylene	74.6	2.0	"	66.7		112	57-144			
o-Xylene	36.0	1.0	"	33.3		108	53-146			
Surrogate: 1,2-Dichloroethane-d4	13.2		"	13.3		99.1	23-173			
Surrogate: Toluene-d8	12.8		"	13.3		96.0	20-170			
Surrogate: 4-Bromofluorobenzene	12.9		"	13.3		96.8	21-167			

Matrix Spike (1909369-MS1)

Source: 1909308-06

Prepared: 09/26/19 Analyzed: 09/28/19

Benzene	39.0	1.0	ug/l	33.3	ND	117	34-141			
Toluene	40.9	1.0	"	33.3	ND	123	27-151			
Ethylbenzene	45.2	1.0	"	33.3	ND	136	29-160			
m,p-Xylene	85.6	2.0	"	66.7	ND	128	20-166			
o-Xylene	41.6	1.0	"	33.3	ND	125	33-159			
Surrogate: 1,2-Dichloroethane-d4	13.4		"	13.3		100	23-173			
Surrogate: Toluene-d8	12.9		"	13.3		96.9	20-170			
Surrogate: 4-Bromofluorobenzene	12.8		"	13.3		95.7	21-167			

Summit Scientific

The results in this report apply to the samples analyzed in accordance with the chain of custody document. This analytical report must be reproduced in its entirety.



Talon/LPE
1811 East Mulberry
Fort Collins CO, 80525

Project: Nelson C-1 3rd Quarter GWM

Project Number: 701530.020.15

Project Manager: Jennifer Galles

Reported:
10/21/19 11:31

Volatile Organic Compounds by EPA Method 8260B - Quality Control

Summit Scientific

Analyte	Reporting			Spike	Source		%REC		RPD	
	Result	Limit	Units	Level	Result	%REC	Limits	RPD	Limit	Notes

Batch 1909369 - EPA 5030 Water MS

Matrix Spike Dup (1909369-MSD1)

Source: 1909308-06

Prepared: 09/26/19 Analyzed: 09/28/19

Benzene	38.0	1.0	ug/l	33.3	ND	114	34-141	2.44	30	
Toluene	39.9	1.0	"	33.3	ND	120	27-151	2.50	30	
Ethylbenzene	45.3	1.0	"	33.3	ND	136	29-160	0.155	30	
m,p-Xylene	85.6	2.0	"	66.7	ND	128	20-166	0.105	30	
o-Xylene	41.3	1.0	"	33.3	ND	124	33-159	0.603	30	
Surrogate: 1,2-Dichloroethane-d4	13.5		"	13.3		101	23-173			
Surrogate: Toluene-d8	12.7		"	13.3		95.3	20-170			
Surrogate: 4-Bromofluorobenzene	12.9		"	13.3		96.7	21-167			

Batch 1909387 - EPA 5030 Water MS

Blank (1909387-BLK1)

Prepared: 09/26/19 Analyzed: 09/27/19

Benzene	ND	1.0	ug/l							
Toluene	ND	1.0	"							
Ethylbenzene	ND	1.0	"							
Xylenes (total)	ND	2.0	"							
Surrogate: 1,2-Dichloroethane-d4	13.8		"	13.3		104	23-173			
Surrogate: Toluene-d8	12.7		"	13.3		95.0	20-170			
Surrogate: 4-Bromofluorobenzene	13.1		"	13.3		98.1	21-167			

LCS (1909387-BS1)

Prepared: 09/26/19 Analyzed: 09/27/19

Benzene	36.7	1.0	ug/l	33.3		110	51-132			
Toluene	41.2	1.0	"	33.3		124	51-138			
Ethylbenzene	43.5	1.0	"	33.3		130	58-146			
m,p-Xylene	85.1	2.0	"	66.7		128	57-144			
o-Xylene	41.4	1.0	"	33.3		124	53-146			
Surrogate: 1,2-Dichloroethane-d4	13.1		"	13.3		98.4	23-173			
Surrogate: Toluene-d8	12.8		"	13.3		96.3	20-170			
Surrogate: 4-Bromofluorobenzene	12.8		"	13.3		96.2	21-167			

Summit Scientific

The results in this report apply to the samples analyzed in accordance with the chain of custody document. This analytical report must be reproduced in its entirety.



Talon/LPE
1811 East Mulberry
Fort Collins CO, 80525

Project: Nelson C-1 3rd Quarter GWM

Project Number: 701530.020.15

Project Manager: Jennifer Galles

Reported:
10/21/19 11:31

Volatile Organic Compounds by EPA Method 8260B - Quality Control

Summit Scientific

Analyte	Reporting			Spike	Source		%REC		RPD	
	Result	Limit	Units	Level	Result	%REC	Limits	RPD	Limit	Notes

Batch 1909387 - EPA 5030 Water MS

Matrix Spike (1909387-MS1)		Source: 1909308-21			Prepared: 09/26/19 Analyzed: 09/27/19					
Benzene	34.0	1.0	ug/l	33.3	ND	102	34-141			
Toluene	37.6	1.0	"	33.3	ND	113	27-151			
Ethylbenzene	41.1	1.0	"	33.3	ND	123	29-160			
m,p-Xylene	79.3	2.0	"	66.7	ND	119	20-166			
o-Xylene	38.6	1.0	"	33.3	ND	116	33-159			
<hr/>										
Surrogate: 1,2-Dichloroethane-d4	13.1		"	13.3		98.3	23-173			
Surrogate: Toluene-d8	12.8		"	13.3		96.4	20-170			
Surrogate: 4-Bromofluorobenzene	12.8		"	13.3		95.9	21-167			
<hr/>										
Matrix Spike Dup (1909387-MSD1)		Source: 1909308-21			Prepared: 09/26/19 Analyzed: 09/27/19					
Benzene	38.3	1.0	ug/l	33.3	ND	115	34-141	11.8	30	
Toluene	42.3	1.0	"	33.3	ND	127	27-151	11.8	30	
Ethylbenzene	45.8	1.0	"	33.3	ND	137	29-160	10.7	30	
m,p-Xylene	88.5	2.0	"	66.7	ND	133	20-166	11.0	30	
o-Xylene	43.1	1.0	"	33.3	ND	129	33-159	10.8	30	
<hr/>										
Surrogate: 1,2-Dichloroethane-d4	13.5		"	13.3		101	23-173			
Surrogate: Toluene-d8	13.1		"	13.3		98.4	20-170			
Surrogate: 4-Bromofluorobenzene	12.7		"	13.3		95.3	21-167			

Summit Scientific

The results in this report apply to the samples analyzed in accordance with the chain of custody document. This analytical report must be reproduced in its entirety.



Talon/LPE
1811 East Mulberry
Fort Collins CO, 80525

Project: Nelson C-1 3rd Quarter GWM

Project Number: 701530.020.15
Project Manager: Jennifer Galles

Reported:
10/21/19 11:31

Notes and Definitions

DET	Analyte DETECTED
ND	Analyte NOT DETECTED at or above the reporting limit
NR	Not Reported
dry	Sample results reported on a dry weight basis
RPD	Relative Percent Difference

Attachment 4
Field Forms

x.653

WELL SAMPLING LOG

Project: Nelson C-1 Quarterly (3rd Quarter) 2019 Project Number: 701530.020.15

Address: Weld County Date: _____

Sampled By: Levi K., Jason L., Ben B., Alex L. Weather: _____

Laboratory/Analyses: Summit Scientific / BTEX Site Manager: Jason L.

$$X - Y = B \times .653 \times 3 = \text{Volume purged}$$

Station Id #	Time	Depth to NAPL (feet)	Depth To Water Y (feet)	Total Depth (feet) X	Volume Purged (gal)	Comments
MW-1	—	30.65	30.75	40.33	8 / 9.5	Dry / no Sample
MW-2	10:20	—	30.29	42.11	12 / 23	Dry /
MW-3	—	32.71	33.64	41.11	7.5 / 7.5	Dry / no Sample
MW-4	—	29.90	30.25	40.35	10 / 20.5	Dry / no Sample
MW-5	10:30	—	35.45	41.68	6 / 12	Dry
MW-6	10:35	—	33.81	47.10	14 / 26	Dry
MW-7	—	29.35	29.60	40.79	11 / 22	Dry / no Sample
MW-8	10:45	—	27.29	41.91	17 / 29	Dry
MW-9	10:50	—	27.71	34.69	6.5 / 13.5	Dry
MW-10	10:55	—	34.3	39.85	4.5 / 11	Dry
A* MW-11	11:00	—	38.68	44.76	6 / 12	Dry
MW-12	11:05	—	37.59	40.34	2 / 5.9	Dry
MW-13	11:10	—	31.41	40.35	8.5 / 17.5	Dry
B* MW-14	11:15	—	30.60	41.79	13 / 22	Dry
MW-15	11:20	33.75	33.82	35.36	0.5 / 13	Dry / no
C* MW-16	11:25	—	27.84	40.43	13 / 25	Dry
MW-17	—	32.43	32.89	46.02	15 / 27	Dry no Sample

Repairs made: _____ Repairs needed: _____
No. of wells sampled: _____ Date shipped: _____

Other comments: _____

Dup A: MW 11
11:03

Dup B: MW 14
11:28

Dup C: MW 16
12:25

WELL SAMPLING LOG

Project: Nelson C-1 Quarterly (3rd quarter) 2019 Project Number: 701530.020.15
 Address: Weld County Date: 9.23.19
 Sampled By: Levi K., Jason L., Ben B., Alex L. Weather: 80's
 Laboratory/Analyses: BTEX Site Manager: Jason L.

Station Id #	Time	Depth to NAPL (feet)	Depth To Water (feet)	Total Depth (feet)	Volume Purged (gal) <i>Need/Actual</i>	Comments
MW-1184	11:30	—	35.55	46.82	22/11.5	Dry
MW-12194	11:00	—	37.49	40.82	9.5/4.5	Dry
MW-20	—	33.91	35.91	41.82	14.5/10	No Sample/Dry
MW-21	11:40	—	30.61	40.11	19/10	Dry
MW-22	11:45	—	32.95	39.66	13/5.5	Dry
MW-23	—	33.99	34.31	35.22	2.5/1.5	No Sample/Dry
MW-24	11:50	—	37.57	47.27	19/11	Dry
MW-25	12:20	—	29.10	31.82	5.5/2	Dry
MW-26	12:15	—	35.95	36.85	2/1.5	Dry
MW-27	—	42.10	43.20	45.12	6/2	No Sample/dry
MW-28	12:10	—	40.40	56.31	32/25	Dry
MW-29	12:05	—	45.15	46.13	2/1.5	Dry
MW-30	12:00	—	33.09	37.20	8/3	Dry
MW-31	11:55	—	31.13	31.47	1/1.70	Dry

Repairs made: _____ Repairs needed: _____
 No. of wells sampled: _____ Date shipped: _____
 Other comments: _____