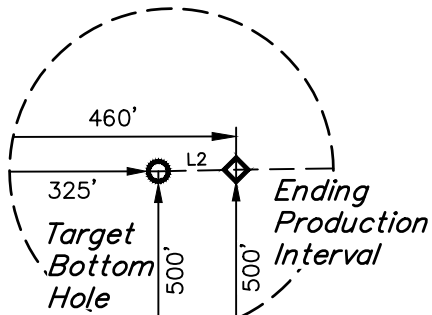


LEGEND:

- └─ = 90° SYMBOL  
● = PROPOSED WELLHEAD.  
○ = TARGET BOTTOM HOLE.  
▲ = SECTION CORNERS LOCATED. (NAD 83)  
◆ = PRODUCTION INTERVAL.



Detail "A"  
No Scale

T4S, R65W, 6th P.M.

ConocoPhillips Company

RUSH #4-65 29-30 4DH  
SW 1/4 SW 1/4, SECTION 28, T4S, R65W, 6th P.M.  
ARAPAHOE COUNTY, COLORADO

BASIS OF BEARINGS  
BASIS OF BEARINGS IS A G.P.S. OBSERVATION  
BASIS OF ELEVATION

BENCHMARK 374 LOCATED ON THE SECTION LINE BETWEEN  
SECTIONS 12 & 13, T5S, R64W, 6th. P.M., TAKEN FROM 1988  
PUBLISHED DATUM BY THE UNITED STATES DEPARTMENT OF  
THE INTERIOR, GEOLOGICAL SURVEY AS BEING 6054.61 FEET.

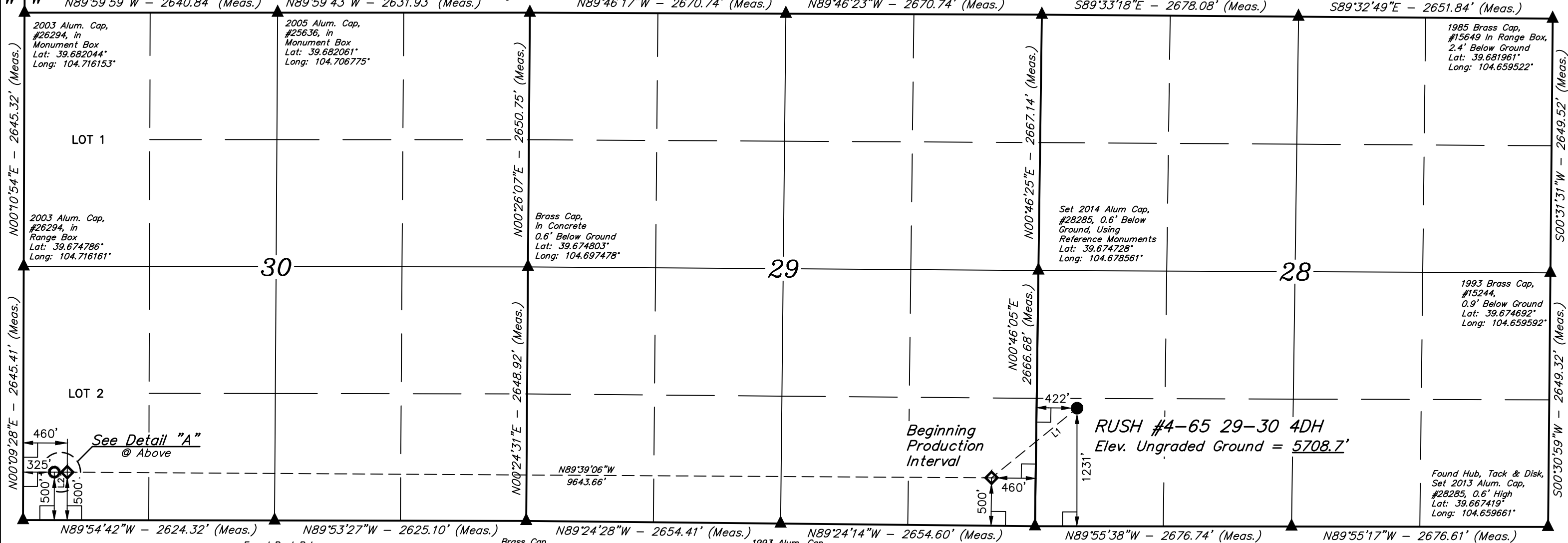
1984 Brass Cap,  
0.9' Below Ground  
Lat: 39.682006°  
Long: 104.668942°

2003 Alum. Cap,  
#25645, 0.3'  
Below Ground  
Lat: 39.682050°  
Long: 104.678453°

Brass Cap,  
#15244, in  
Monument Box  
Lat: 39.682064°  
Long: 104.687939°

1984 Alum. Cap,  
#13155, 0.8'  
Below Ground  
in Asphalt  
Lat: 39.682078°  
Long: 104.697425°

R  
66  
W



2003 Alum. Cap,  
#26294, in  
Range Box  
Lat: 39.667525°  
Long: 104.716164°

Found Bent Rebar,  
Set 2014 Alum. Cap,  
#28285, Flush  
w/Ground  
Lat: 39.667531°  
Long: 104.706844°

Brass Cap,  
in Concrete,  
Flush w/Ground  
Lat: 39.667533°  
Long: 104.697522°

1993 Alum. Cap,  
#27609, 0.3' High  
Lat: 39.667472°  
Long: 104.688097°

1998 Brass Cap,  
#13327 0.6' Below Ground  
Lat: 39.667411°  
Long: 104.678669°

1985 Brass Cap,  
#15649 Flush w/Ground  
in Concrete  
Lat: 39.667417°  
Long: 104.669164°

LINE TABLE

LINE	DIRECTION	LENGTH
L1	S50°51'21"W	1149.97'
L2	N89°54'42"W	135.00'

PDOP = 1.3

CERTIFICATE OF REGISTRATION  
THIS IS TO CERTIFY THAT THE ABOVE PLAT WAS PREPARED FROM FIELD  
NOTES OF ACTUAL SURVEYS MADE BY ME OR UNDER MY SUPERVISION  
AND THAT THE SAME ARE TRUE AND CORRECT TO THE BEST OF MY  
KNOWLEDGE AND BELIEF.

REGISTERED LAND SURVEYOR  
REGISTRATION NO. 28285  
STATE OF COLORADO  
JULY 10-18

NAD 83 (SURFACE LOCATION)	NAD 83 (BEG. PROD. INTERVAL)	NAD 83 (ENDING PROD. INTERVAL)	NAD 83 (TARGET BOTTOM HOLE)
LATITUDE = 39°40'14.85" (39.670792) LONGITUDE = 104°40'37.64" (104.677122)	LATITUDE = 39°40'07.66" (39.668795) LONGITUDE = 104°40'49.02" (104.680284)	LATITUDE = 39°40'08.03" (39.668898) LONGITUDE = 104°42'52.31" (104.714531)	LATITUDE = 39°40'08.03" (39.668898) LONGITUDE = 104°42'54.04" (104.715010)
NAD 27 (SURFACE LOCATION)	NAD 27 (BEG. PROD. INTERVAL)	NAD 27 (ENDING PROD. INTERVAL)	NAD 27 (TARGET BOTTOM HOLE)
LATITUDE = 39°40'14.90" (39.670804) LONGITUDE = 104°40'35.75" (104.676596)	LATITUDE = 39°40'07.71" (39.668807) LONGITUDE = 104°40'47.13" (104.679758)	LATITUDE = 39°40'08.08" (39.668910) LONGITUDE = 104°42'50.41" (104.714004)	LATITUDE = 39°40'08.08" (39.668910) LONGITUDE = 104°42'52.14" (104.714483)
STATE PLANE NAD 83 (CO. CENTRAL)	STATE PLANE NAD 83 (CO. CENTRAL)	STATE PLANE NAD 83 (CO. CENTRAL)	STATE PLANE NAD 83 (CO. CENTRAL)
N: 1670263.82 E: 3231636.79	N: 1669528.32 E: 3230753.23	N: 1669480.81 E: 3221112.58	N: 1669479.54 E: 3220977.63
STATE PLANE NAD 27 (CO. CENTRAL)	STATE PLANE NAD 27 (CO. CENTRAL)	STATE PLANE NAD 27 (CO. CENTRAL)	STATE PLANE NAD 27 (CO. CENTRAL)
N: 670256.26 E: 2231790.71	N: 669520.76 E: 2230907.17	N: 669473.09 E: 2221266.60	N: 669471.81 E: 2221131.65

REV: 1 05-04-18 C.C. (SHL, BPI, EPI & TBH MOVE)



UELS, LLC  
Corporate Office \* 85 South 200 East  
Vernal, UT 84078 \* (435) 789-1017

SURVEYED BY	CHAD MEIERS, O.R.	04-20-18	SCALE
DRAWN BY	K.B.	02-09-17	1" = 1000'

WELL LOCATION PLAT