

LEGEND:

- └ = 90° SYMBOL
● = PROPOSED WELLHEAD.
○ = TARGET BOTTOM HOLE.
▲ = SECTION CORNERS LOCATED. (NAD 83)
◆ = PRODUCTION INTERVAL.

T4S, R65W, 6th P.M.

ConocoPhillips Company

RUSH #4-65 29-30 3BH
NW 1/4 SW 1/4, SECTION 28, T4S, R65W, 6th P.M.
ARAPAHOE COUNTY, COLORADO

BASIS OF BEARINGS

BASIS OF BEARINGS IS A G.P.S. OBSERVATION

BASIS OF ELEVATION

BENCHMARK 374 LOCATED ON THE SECTION LINE BETWEEN
SECTIONS 12 & 13, T5S, R64W, 6th. P.M., TAKEN FROM 1988
PUBLISHED DATUM BY THE UNITED STATES DEPARTMENT OF
THE INTERIOR, GEOLOGICAL SURVEY AS BEING 6054.61 FEET.

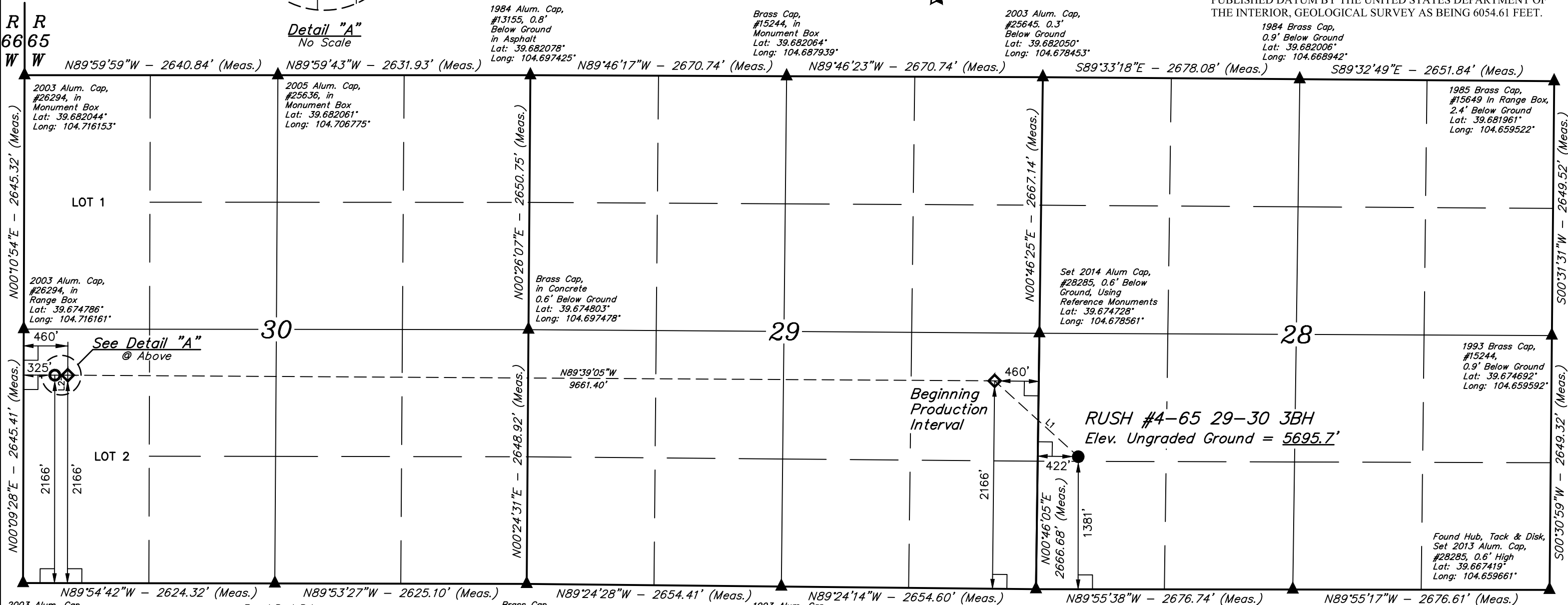
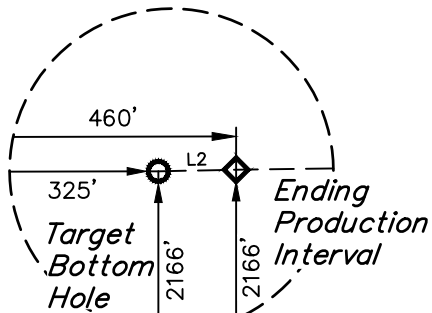
1984 Brass Cap,
0.9' Below Ground
Lat: 39.682006°
Long: 104.668942°

2003 Alum. Cap,
#25645, 0.3'
Below Ground
Lat: 39.682050°
Long: 104.678453°

Brass Cap,
#15244, in
Monument Box
Lat: 39.682064°
Long: 104.687939°

1984 Alum. Cap,
#13155, 0.8'
Below Ground
in Asphalt
Lat: 39.682078°
Long: 104.697425°

Detail "A"
No Scale



2003 Alum. Cap,
#26294, in
Range Box
Lat: 39.667525°
Long: 104.716164°

Found Bent Rebar,
Set 2014 Alum. Cap,
#28285, Flush
w/Ground
Lat: 39.667531°
Long: 104.706844°

Brass Cap,
in Concrete,
Flush w/Ground
Lat: 39.667533°
Long: 104.697522°

1993 Alum. Cap,
#27609, 0.3' High
Lat: 39.667472°
Long: 104.688097°

1998 Brass Cap,
#13327 0.6' Below Ground
Lat: 39.667411°
Long: 104.678669°

1985 Brass Cap,
#15649 Flush w/Ground
in Concrete
Lat: 39.667417°
Long: 104.669164°

1993 Brass Cap,
#15244,
0.9' Below Ground
Lat: 39.674692°
Long: 104.659592°

Found Hub, Tack & Disk,
Set 2013 Alum. Cap,
#28285, 0.6' High
Lat: 39.667419°
Long: 104.659661°

LINE TABLE

LINE	DIRECTION	LENGTH
L1	N47°48'45"W	1176.26'
L2	N89°54'42"W	135.00'

PDOP = 1.5

THIS IS TO CERTIFY THAT THE ABOVE PLAT WAS PREPARED FROM FIELD
NOTES OF ACTUAL SURVEYS MADE BY ME OR UNDER MY SUPERVISION,
AND THAT THE SAME ARE TRUE AND CORRECT TO THE BEST OF MY
KNOWLEDGE AND BELIEF.

REGISTERED LAND SURVEYOR
REGISTRATION NO. 28285
STATE OF COLORADO

NAD 83 (SURFACE LOCATION)	NAD 83 (BEG. PROD. INTERVAL)	NAD 83 (ENDING PROD. INTERVAL)	NAD 83 (TARGET BOTTOM HOLE)
LATITUDE = 39°40'16.33" (39.671204) LONGITUDE = 104°40'37.62" (104.677116)	LATITUDE = 39°40'24.12" (39.673367) LONGITUDE = 104°40'48.78" (104.680216)	LATITUDE = 39°40'24.49" (39.673471) LONGITUDE = 104°42'52.30" (104.714528)	LATITUDE = 39°40'24.49" (39.673470) LONGITUDE = 104°42'54.03" (104.715008)
NAD 27 (SURFACE LOCATION)	NAD 27 (BEG. PROD. INTERVAL)	NAD 27 (ENDING PROD. INTERVAL)	NAD 27 (TARGET BOTTOM HOLE)
LATITUDE = 39°40'16.38" (39.671216) LONGITUDE = 104°40'35.72" (104.676590)	LATITUDE = 39°40'24.17" (39.673379) LONGITUDE = 104°40'46.89" (104.679691)	LATITUDE = 39°40'24.54" (39.673483) LONGITUDE = 104°42'50.41" (104.714001)	LATITUDE = 39°40'24.54" (39.673482) LONGITUDE = 104°42'52.13" (104.714481)
STATE PLANE NAD 83 (CO. CENTRAL)	STATE PLANE NAD 83 (CO. CENTRAL)	STATE PLANE NAD 83 (CO. CENTRAL)	STATE PLANE NAD 83 (CO. CENTRAL)
N: 1670413.78 E: 3231637.15	N: 1671193.83 E: 3230757.22	N: 1671146.26 E: 3221098.83	N: 1671144.98 E: 3220963.88
STATE PLANE NAD 27 (CO. CENTRAL)	STATE PLANE NAD 27 (CO. CENTRAL)	STATE PLANE NAD 27 (CO. CENTRAL)	STATE PLANE NAD 27 (CO. CENTRAL)
N: 670406.22 E: 2231791.07	N: 671186.24 E: 2230911.14	N: 671138.51 E: 2221252.83	N: 671137.23 E: 2221117.87

REV: 1 05-04-18 C.C. (SHL, BPI, EPI & TBH MOVE)



UELS, LLC
Corporate Office * 85 South 200 East
Vernal, UT 84078 * (435) 789-1017

SURVEYED BY	CHAD MEIERS, O.R.	04-20-18	SCALE
DRAWN BY	K.B.	02-09-17	1" = 1000'

WELL LOCATION PLAT