



ConocoPhillips

Arapahoe County, Colorado

Rush 4-65 29-30 3BH

Design A

Casing Depths

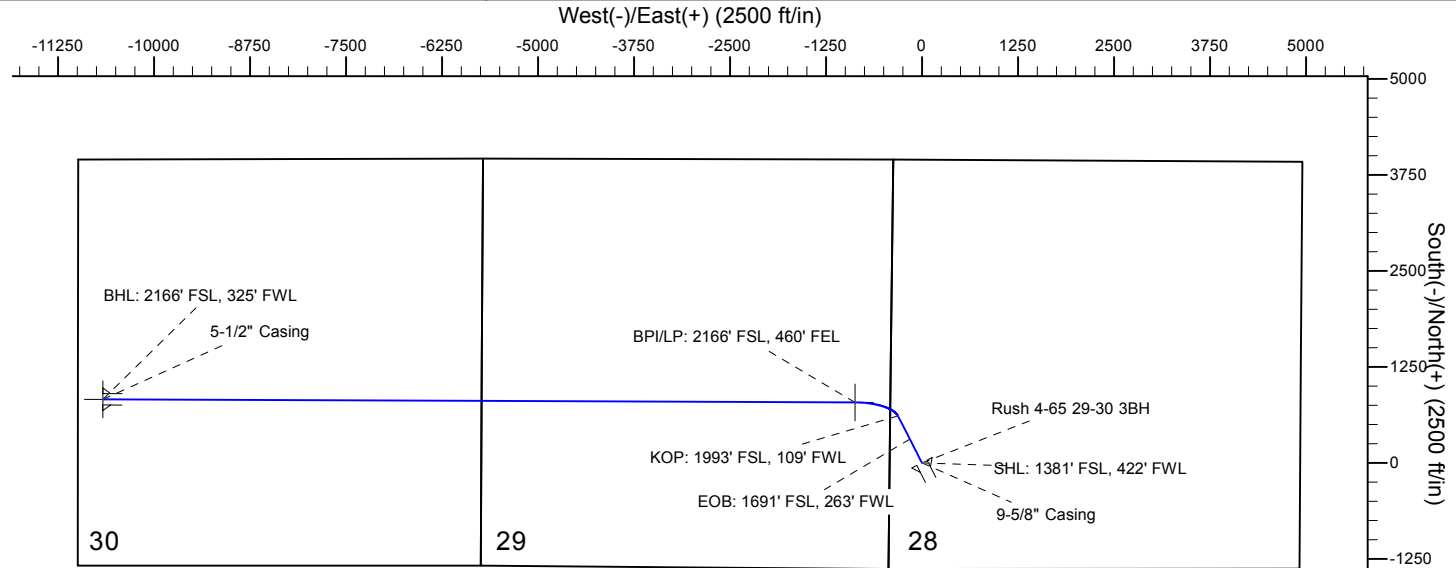
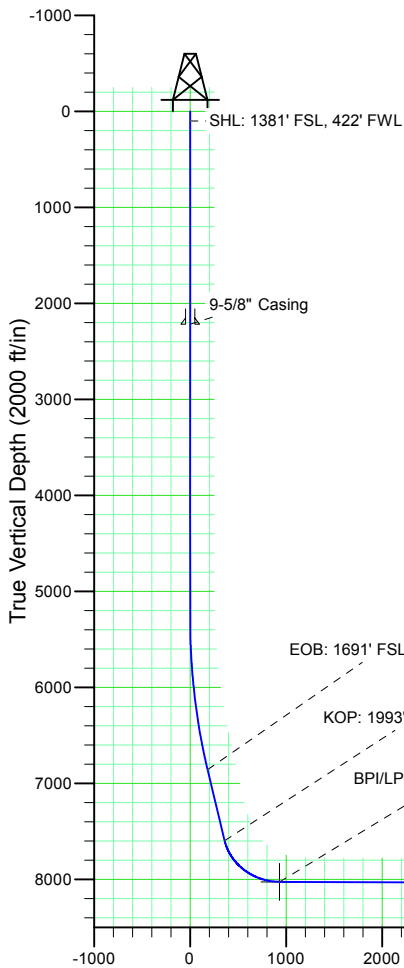
| TVD | MD | Name | Size |
|---------|----------|---------------|-------|
| 2216.00 | 2216.00 | 9-5/8" Casing | 9-5/8 |
| 8066.00 | 18302.33 | 5-1/2" Casing | 5-1/2 |

Ground Level: 5695.50
 Surface Location Latitude: 39° 40' 16.330 N
 Surface Location Longitude: 104° 40' 37.620 W
 North Reference: True
 25' RKB @ 5720.50ft (25' RKB)

North American Datum 1983
 GRS 1980
 US State Plane 1983
 Colorado Central Zone

Well Profile Data

| MD | Inc | Azi | TVD | +N/-S | +E/-W | Dleg | VSect |
|----------|-------|--------|---------|--------|-----------|-------|----------|
| 0.00 | 0.00 | 0.00 | 0.00 | 0.00 | 0.00 | 0.00 | 0.00 |
| 5264.50 | 0.00 | 0.00 | 5264.50 | 0.00 | 0.00 | 0.00 | 0.00 |
| 6907.87 | 24.65 | 332.89 | 6857.64 | 309.86 | -158.61 | 1.50 | 182.11 |
| 7721.13 | 24.65 | 332.89 | 7596.79 | 611.80 | -313.16 | 0.00 | 359.57 |
| 8508.54 | 89.77 | 270.23 | 8026.00 | 788.26 | -872.63 | 10.00 | 931.01 |
| 18302.33 | 89.77 | 270.23 | 8066.00 | 827.90 | -10666.26 | 0.00 | 10698.34 |



Wellbore Targets

| Name | TVD | Latitude | Longitude |
|-------------------------|---------|------------------|-------------------|
| Rush 4-65 29-30 3BH BPI | 8026.00 | 39° 40' 24.120 N | 104° 40' 48.780 W |
| Rush 4-65 29-30 3BH BHL | 8066.00 | 39° 40' 24.490 N | 104° 42' 54.030 W |

