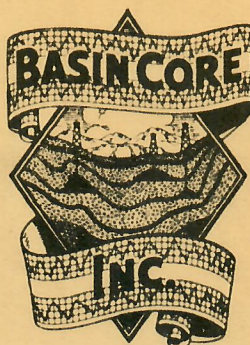


631 1/2 N. THIRD ST.

PHONE 1646



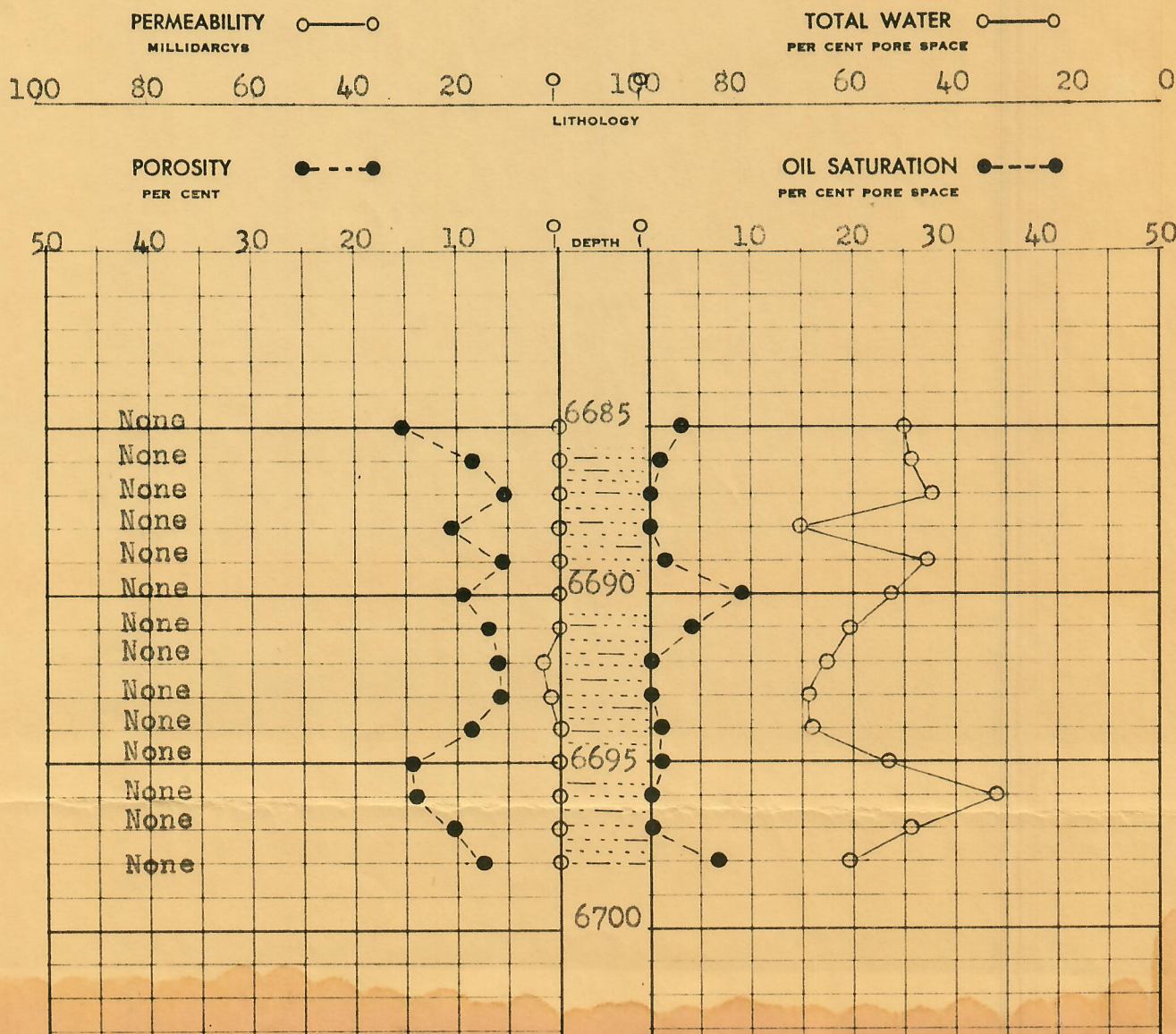
00226030



## STERLING, COLORADO

COMPANY	Nebraska Drillers	DATE	April 22, 1955
WELL	No. 1 Celia De Ford	CORES	Diamond
FIELD	Wildcat	ANALYST	JP
COUNTY	Weld	STATE	Colorado

**Note:** The analyses and interpretations presented in this report represent the best opinions of Basin Core, Inc., and are presented to the client for use at his discretion. Basin Core, Inc. will assume no responsibility as to the interpretations of or the commercial value of any section analyzed.





## BASIN CORE, INC.

STERLING, COLORADO

COMPANY Nebraska Drillers DATE April 22, 1955 FILE NO. 55-1183  
 WELL No. 1 Celia De Ford TYPE CORES Diamond ANALYST JP  
 FIELD Wildcat COUNTY Weld STATE Colorado

## ANALYSIS DATA AND INTERPRETATIONS

SAMPLE NO.	DEPTH FEET	PERMEABILITY MILLIDARCYs		POROSITY	LIQUID SATURATIONS PER CENT PORE SPACE		PROBABLE PRODUCTION	REMARKS
		HORIZONTAL	VERTICAL		WATER	OIL		
11	6695	0.0	0.0	14.3	53.2	1.4	None	Very fine grain, silty carbonaceous sand, w/ shale streaks, no show
12	6696	0.0	0.0	14.0	31.5	0.0	None	Very fine grain, silty carbonaceous sand, w/ shale streaks, spotty stain & odor
13	6697	0.0	0.0	10.1	48.5	0.0	None	Very fine grain, silty carbonaceous sand, w/ shale streaks, no show
14	6698	0.0	0.0	7.6	60.5	6.5	None	Very fine grain, silty carbonaceous sand, w/ shale streaks, spotty stain & odor



## BASIN CORE, INC.

STERLING, COLORADO

COMPANY Nebraska Drillers DATE April 22, 1955 FILE NO. 55-1183  
 WELL No. 1 Celia De Ford TYPE CORES Diamond ANALYST JP  
 FIELD Wildcat COUNTY Weld STATE Colorado

## ANALYSIS DATA AND INTERPRETATIONS

SAMPLE NO.	DEPTH FEET	PERMEABILITY MILLIDARCYs		POROSITY %	LIQUID SATURATIONS PER CENT PORE SPACE		PROBABLE PRODUCTION	REMARKS
		HORIZONTAL	VERTICAL		WATER	OIL		
1	6685	0.0	0.0	15.6	50.2	3.2	None	Very hard, very fine grain gray sand, w/shale streaks spotty stain & odor
2	6686	0.0	0.0	8.7	49.0	1.0	None	Very hard, very fine grain gray sand, w/shale streaks spotty stain & odor
3	6687	0.0	0.0	5.2	44.8	0.0	None	Very hard, very fine grain gray sand, w/shale streaks spotty stain & odor, vertical fractures
4	6688	0.0	0.0	10.6	70.7	0.0	None	Very hard, very fine grain gray sand, w/shale streaks no show, vertical fract.
5	6689	0.0	0.0	5.9	45.7	1.7	None	Very hard, very fine grain gray sand, w/shale streaks spotty stain & odor, vertical fractures
6	6690	0.0	0.0	9.0	52.1	8.8	None	Very hard, very fine grain gray sand, w/shale streaks pale stain & odor, vertical fractures
7	6691	0.0	0.0	7.2	60.1	4.0	None	Very hard, very fine grain gray sand, w/shale streaks spotty stain & odor, vertical fractures
8	6692	3.0	0.0	6.1	65.2	0.0	None	Very hard, very fine grain gray sand, w/shale streaks spotty stain & odor, vertical fractures
9	6693	2.0	0.0	6.2	69.0	0.0	None	Very fine grain, silty carbonaceous sand, w/shale streaks, no show
10	6694	0.0	0.0	8.1	68.0	1.0	None	Very fine grain, silty carbonaceous sand, w/shale streaks, spotty stain & odor