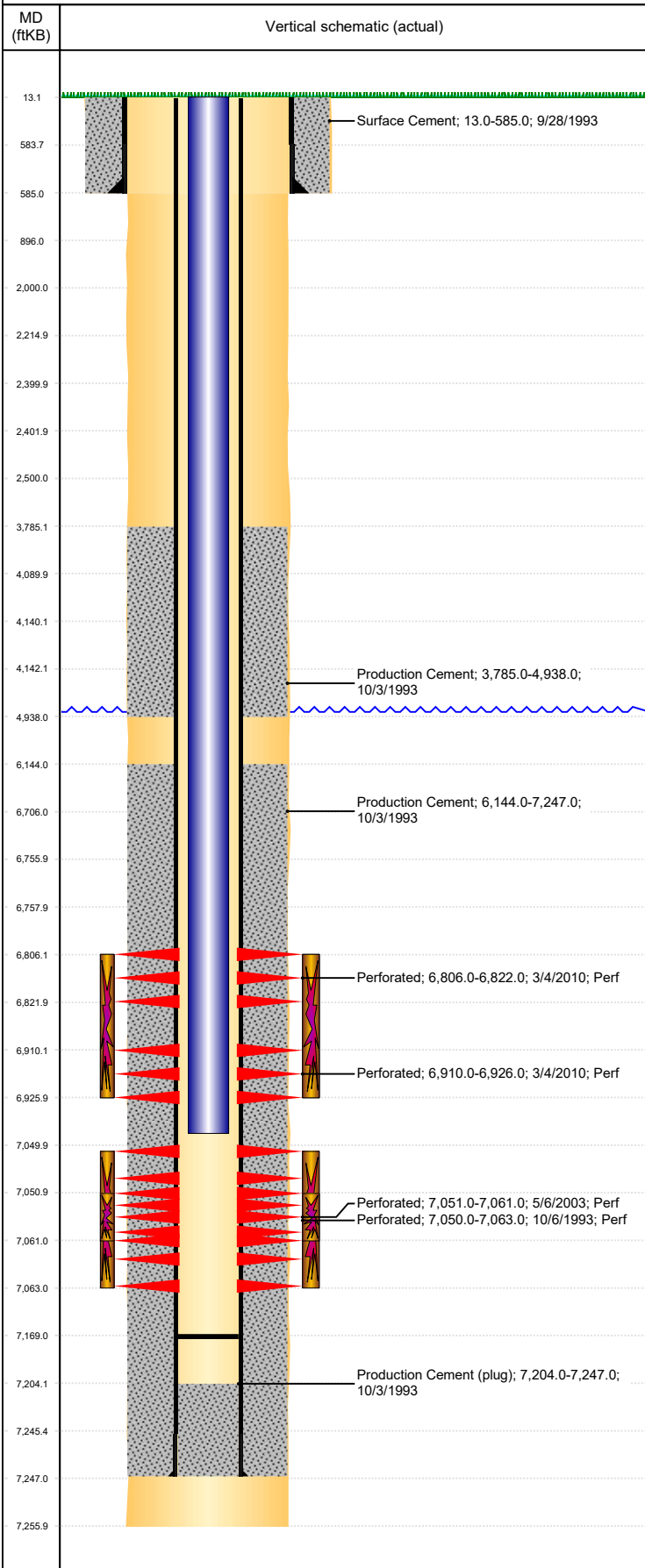


Well Name: NORRIS D32-06

VERTICAL, ORIGINAL HOLE, 10/31/2019 3:10:29 PM



Well Header

API 05-123-17397	Business Unit DJ BASIN	District 15	Well Config VERTICAL
KB - GL / MSL (ft... 13.00	Spud Date 9/28/1993	P & A Date	Well Production Status PR
Comment POOR BOND 6230-6310			SoRT No

Surface Location (Congressional)

Qtr 3 SE	Qtr 4 NW	Section 32	Twntshp 3	Twntsh... N	Range 64	Rng E... W	Actual Latitude (°) 40.18356614	Actual Longitude (°) -104.57767321
-------------	-------------	---------------	--------------	----------------	-------------	---------------	------------------------------------	---------------------------------------

Wellbore Sections

Section Des	Size (in)	Act Top, MD (ftKB)	Act Btm, MD (ftKB)
SURFACE	12 1/4	13	585
PRODUCTION	7 7/8	585	7,256

Casing Strings

Csg Des	Run Date	OD (in)	Wt/Len (lb/ft)	Grade	Top, MD (ftKB)	MD (ftKB)
Surface	9/28/1993	8 5/8	24.00	J-55	13.0	585.0
Production	10/3/1993	3 1/2	7.70	M-75	13.0	7,247.0

Cement

Des	Start Date	Top (ftKB)	Btm (ftKB)
Surface Cement	9/28/1993	13.0	585.0
Production Cement	10/3/1993	3,785.0	4,938.0
Production Cement	10/3/1993	6,144.0	7,247.0

Zone Statuses

Zone Name	Status Date	Status	Fluid Type	Job	Prod Method
CODELL	3/2/2010	SI		RECOMPLETION, 3/1/2010 10:00	
CODELL	4/9/2010	PR		RECOMPLETION, 3/1/2010 10:00	
NIOBRARA	4/9/2010	PR		RECOMPLETION, 3/1/2010 10:00	

Perforation Data

Linked Zone	Bnch/Stg	Entered Shot Total	Top (ftKB)	Btm (ftKB)	Date
NIOBRARA, ORIGINAL HOLE	A	64	6,806.00	6,822.00	3/4/2010
NIOBRARA, ORIGINAL HOLE	C	64	6,910.00	6,926.00	3/4/2010
CODELL, ORIGINAL HOLE		53	7,050.00	7,063.00	10/6/1993
CODELL, ORIGINAL HOLE		40	7,051.00	7,061.00	5/6/2003

Stimulation Intervals

Zone	Start Date	Top (ftKB)	Btm (ftKB)
NIOBRARA, ORIGINAL HOLE	3/18/2010	6,806.0	6,926.0
NIOBRARA, ORIGINAL HOLE	3/26/2010	6,806.0	6,926.0
CODELL, ORIGINAL HOLE	10/6/1993	7,050.0	7,063.0
CODELL, ORIGINAL HOLE	5/14/2003	7,051.0	7,061.0

Other In Hole

Run Date	Des	OD (in)	Top (ftKB)	Btm (ftKB)

Logs

Date	Type	Top, MD (ftKB)	Btm, MD (ftKB)
10/2/1993	COMPENSATED DENSITY	3,800.0	7,270.0
10/2/1993	INDUCTION	3,800.0	7,270.0
10/6/1993	CEMENT BOND	3,700.0	7,183.0
5/8/2017	GYRO	0.0	6,950.0

Plug Back Total Depths

Date	Type	Com	Depth (ftKB)
3/4/2010	PLUG	WIRELINE MEASUREMENT.	6,970.0
4/6/2010	FILL		7,169.0