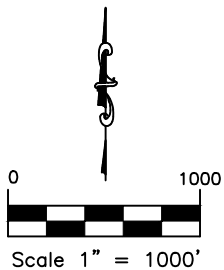
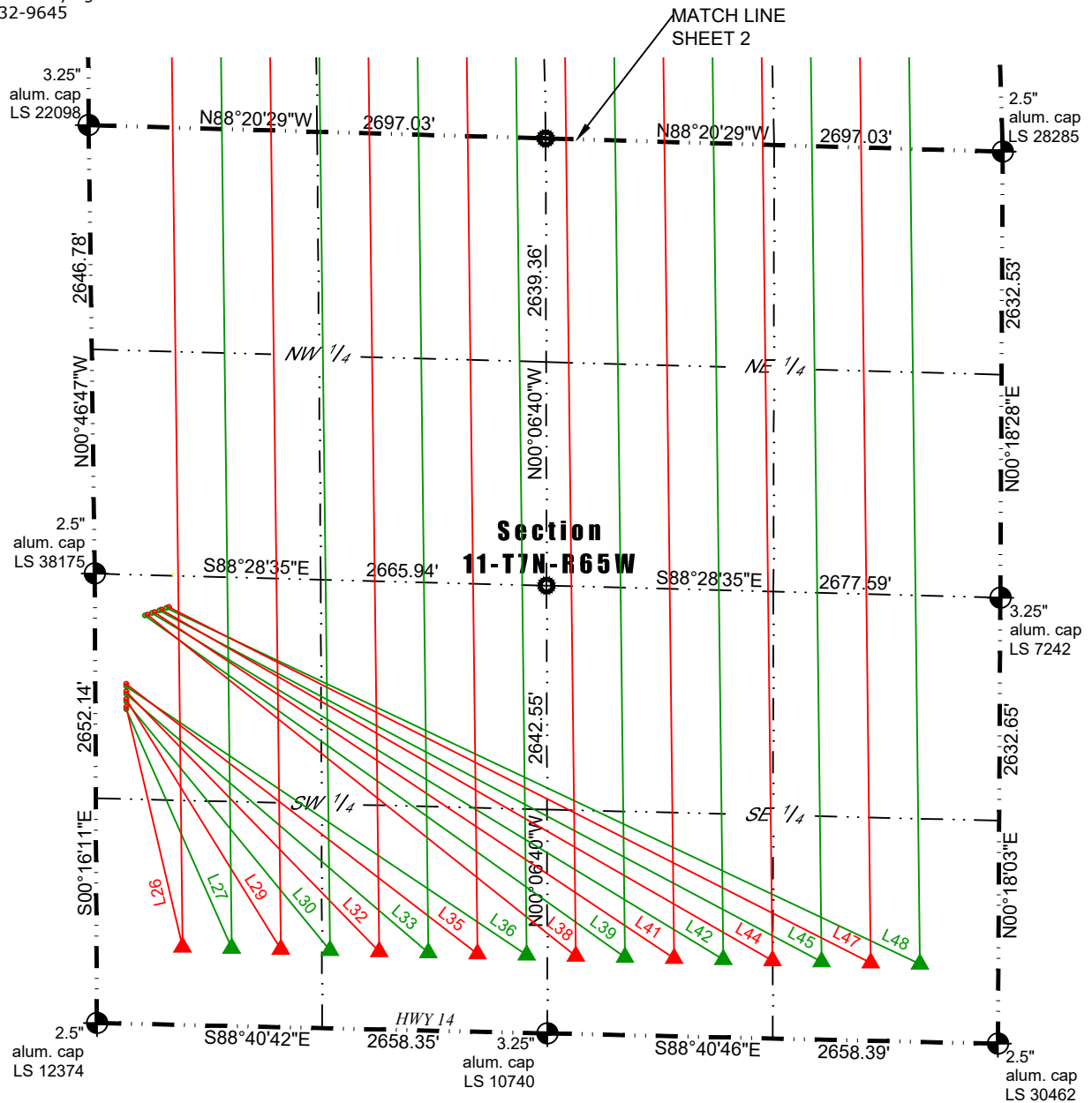




Washburn Land Surveying
www.WashburnSurveying.com
970-232-9645

MULTI-WELL PLAN ELDER PAD (EAST LATERALS)

SECTION: 11
TOWNSHIP: 7N
RANGE: 65W
6TH P.M.
WELD COUNTY, CO



LEGEND:

- ALIQUOT CORNER AS DESCRIBED
- CALCULATED POSITION
- SURFACE HOLE LOCATION (SHL)
- LANDING POINT LOCATION (LPL)
- BOTTOM HOLE LOCATION (BHL)

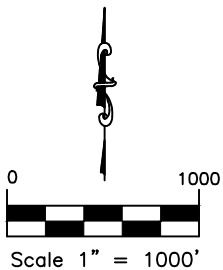
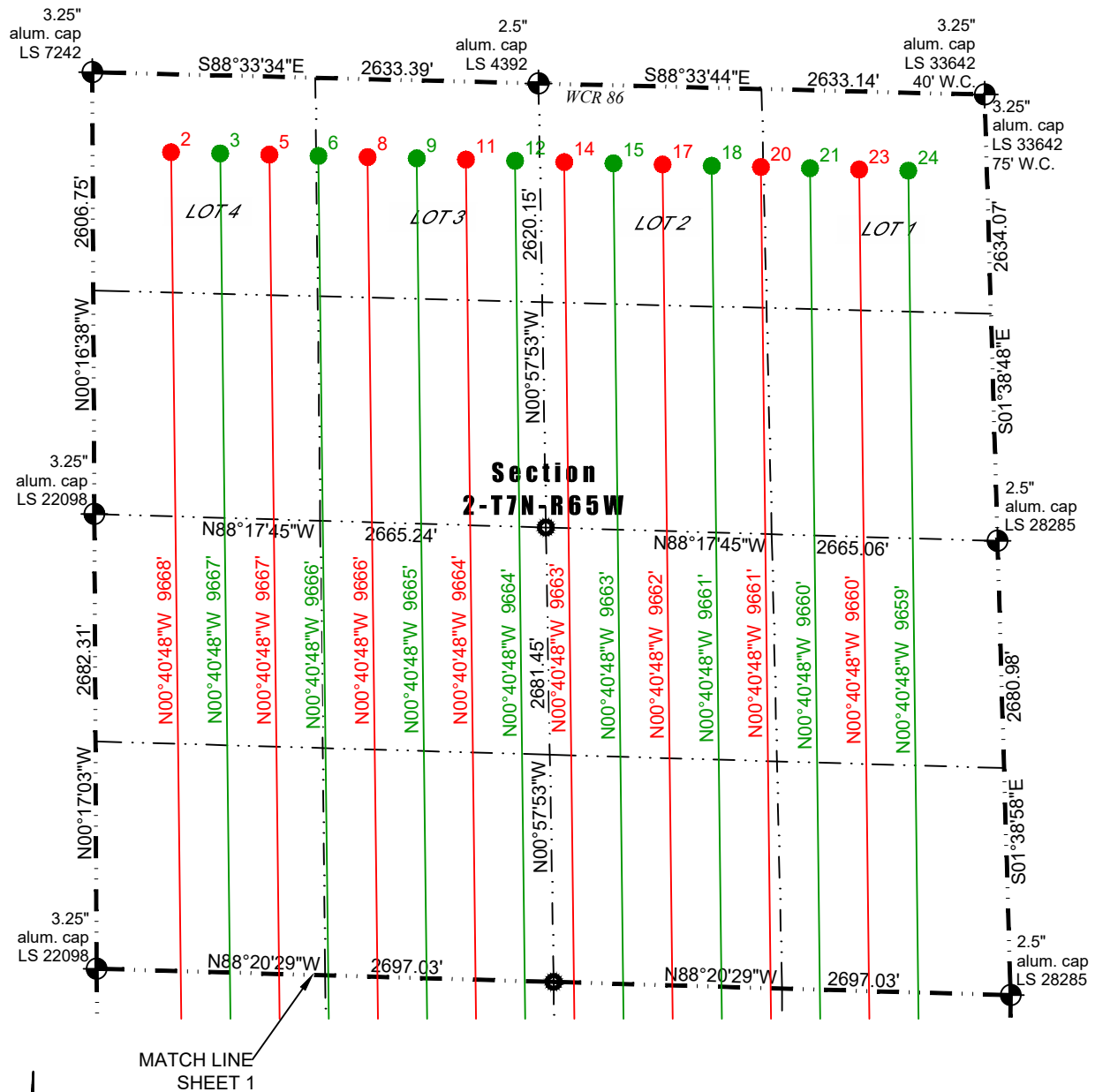
| Parcel Line Table | | | Parcel Line Table | | | Parcel Line Table | | |
|-------------------|--------|-------------|-------------------|--------|-------------|-------------------|--------|-------------|
| Line # | Length | Direction | Line # | Length | Direction | Line # | Length | Direction |
| L25 | 1427' | S13°30'26"E | L33 | 2347' | S49°27'03"E | L41 | 3684' | S56°19'44"E |
| L26 | 1456' | S13°13'53"E | L34 | 2596' | S52°59'55"E | L42 | 3941' | S58°45'41"E |
| L27 | 1540' | S23°51'44"E | L35 | 2614' | S52°28'25"E | L43 | 4176' | S60°25'33"E |
| L28 | 1710' | S32°16'55"E | L36 | 2845' | S56°09'59"E | L44 | 4156' | S60°06'40"E |
| L29 | 1735' | S31°45'10"E | L37 | 3248' | S51°54'52"E | L45 | 4423' | S62°03'24"E |
| L30 | 1897' | S39°21'11"E | L38 | 3232' | S51°27'47"E | L46 | 4664' | S63°22'48"E |
| L31 | 2119' | S44°47'40"E | L39 | 3476' | S54°34'01"E | L47 | 4643' | S63°06'39"E |
| L32 | 2141' | S44°13'43"E | L40 | 3702' | S56°42'11"E | L48 | 4917' | S64°41'51"E |



Washburn Land Surveying
www.WashburnSurveying.com
970-232-9645

MULTI-WELL PLAN ELDER PAD (EAST LATERALS)

SECTION: 11
TOWNSHIP: 7N
RANGE: 65W
6TH P.M.
WELD COUNTY, CO



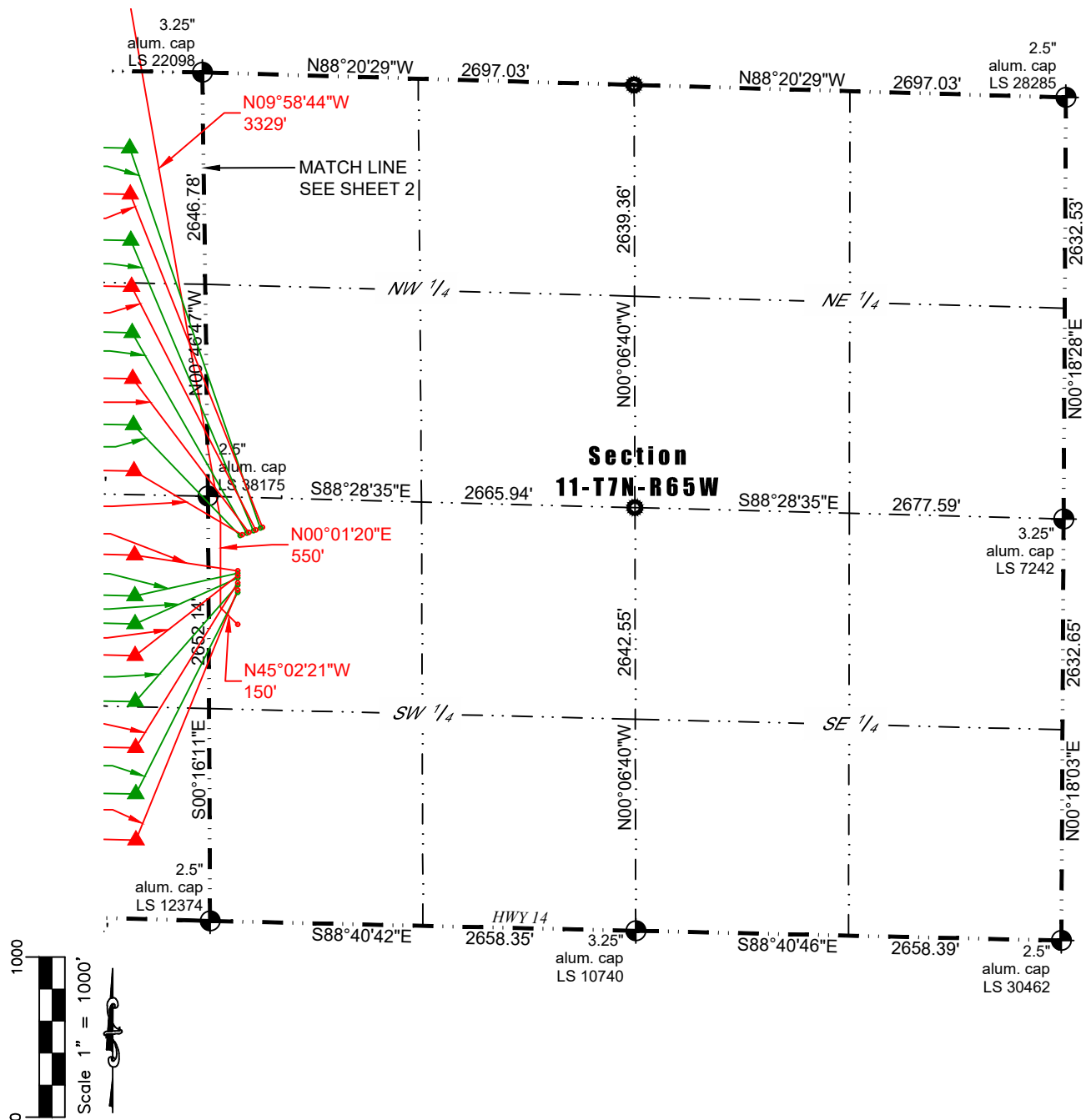
- LEGEND:
- ALIQUOT CORNER AS DESCRIBED
 - CALCULATED POSITION
 - SURFACE HOLE LOCATION (SHL)
 - LANDING POINT LOCATION (LPL)
 - BOTTOM HOLE LOCATION (BHL)



Washburn Land Surveying
www.WashburnSurveying.com
970-232-9645

MULTI-WELL PLAN ELDER PAD (WEST LATERALS)

SECTION: 11
TOWNSHIP: 7N
RANGE: 65W
6TH P.M.
WELD COUNTY, CO



NOTE:
ELDER HNB & HNC LATERALS &
RUSCH HNB LATERAL SHOWN ON
THIS PAGE.
SEE PAGES 4, 5 & 6 FOR ELDER HC
LATERALS.

LEGEND:

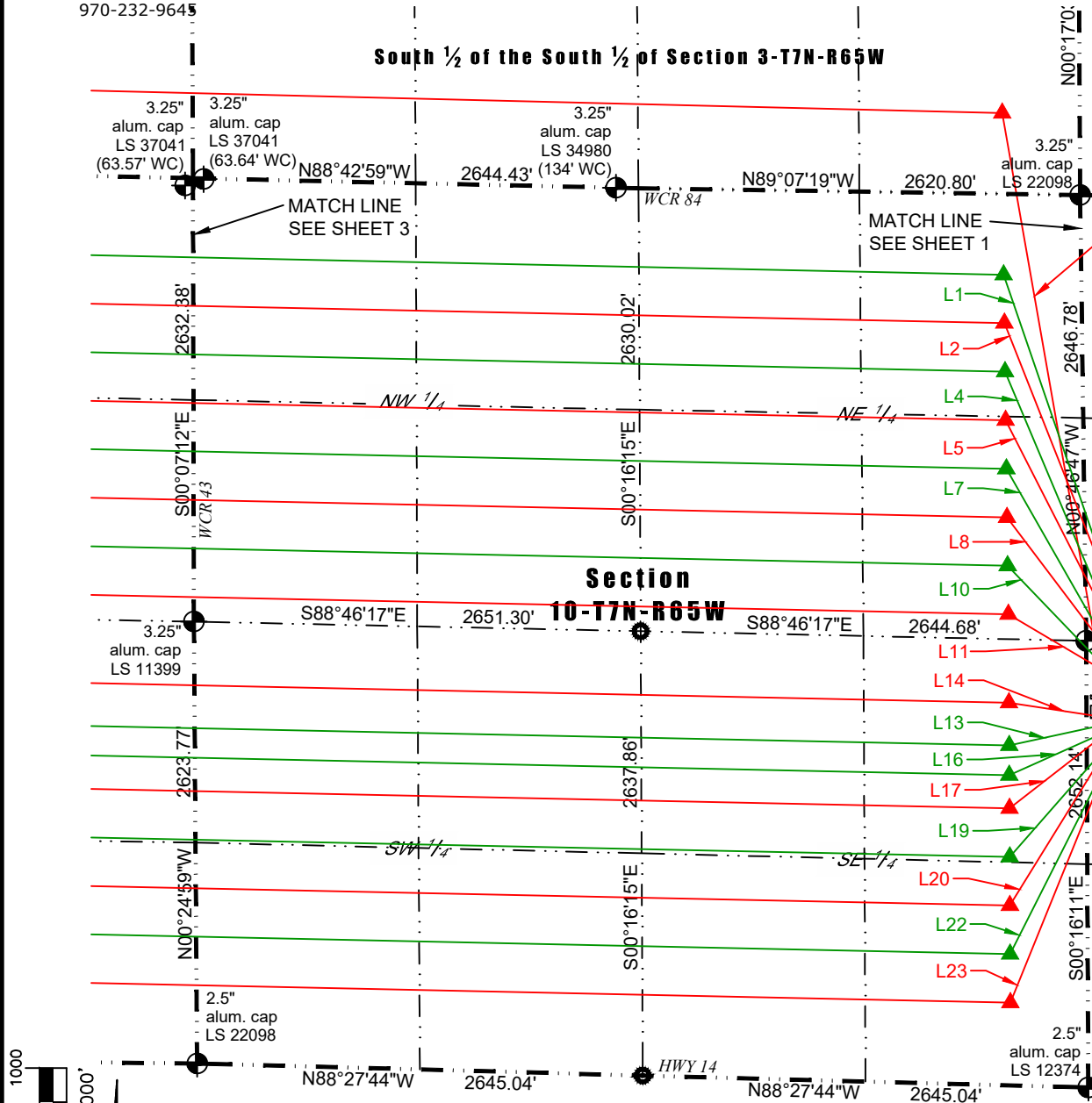
- ALIQUOT CORNER AS DESCRIBED
- CALCULATED POSITION
- SURFACE HOLE LOCATION (SHL)
- ▲ LANDING POINT LOCATION (LPL)
- BOTTOM HOLE LOCATION (BHL)



Washburn Land Surveying
www.WashburnSurveying.com
970-232-9645

MULTI-WELL PLAN ELDER PAD (WEST LATERALS)

SECTION: 11
TOWNSHIP: 7N
RANGE: 65W
6TH P.M.
WELD COUNTY, CO



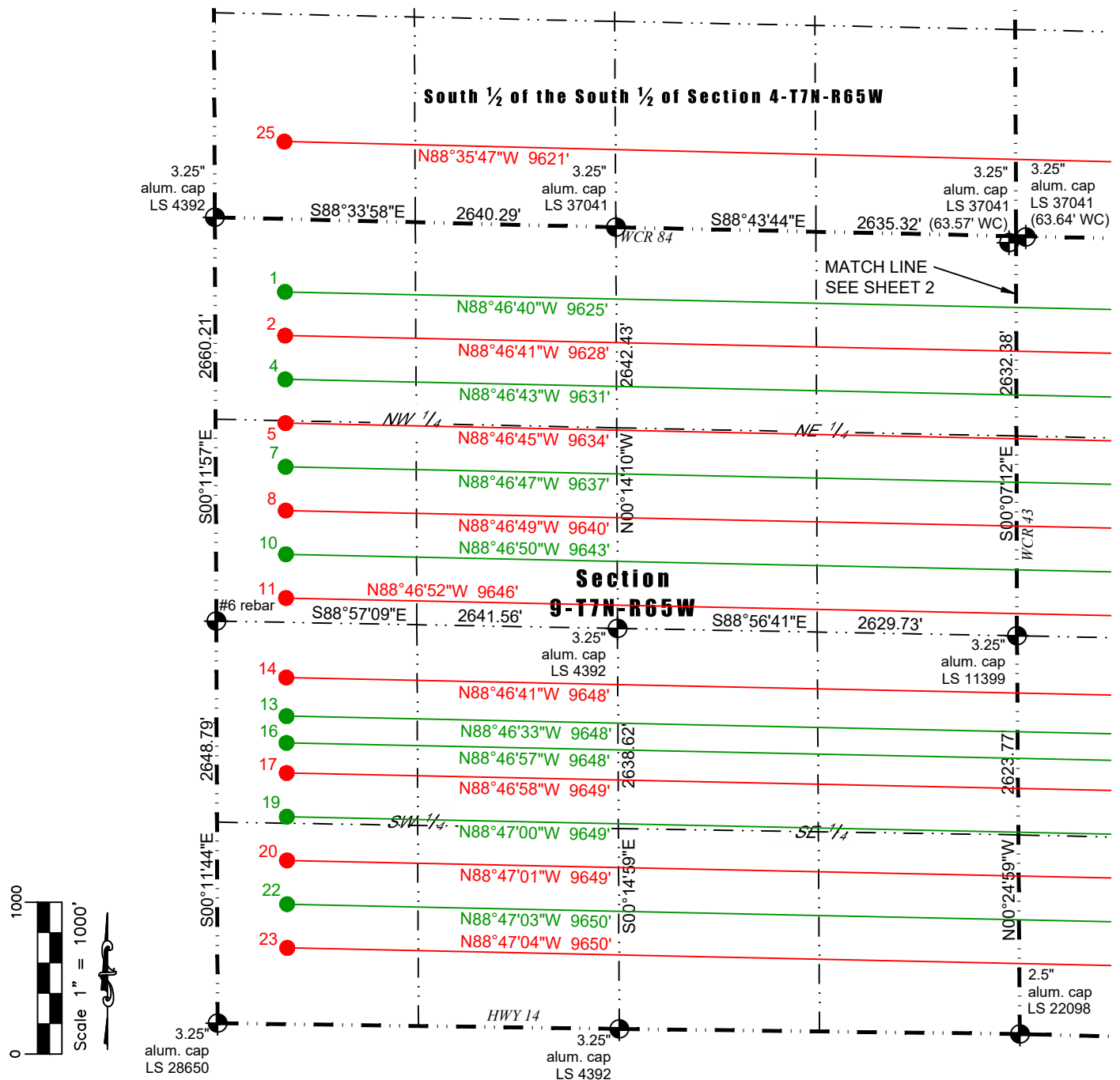
| Parcel Line Table | | | Parcel Line Table | | | Parcel Line Table | | |
|-------------------|--------|-------------|-------------------|--------|-------------|-------------------|--------|-------------|
| Line # | Length | Direction | Line # | Length | Direction | Line # | Length | Direction |
| L1 | 2510' | N18°57'02"W | L9 | 1194' | N35°42'51"W | L17 | 811' | S52°03'10"W |
| L2 | 2238' | N21°38'08"W | L10 | 959' | N43°52'25"W | L18 | 793' | S53°45'43"W |
| L3 | 2238' | N20°52'03"W | L11 | 783' | N59°27'48"W | L19 | 967' | S41°17'24"W |
| L4 | 1968' | N22°52'34"W | L12 | 765' | N57°43'41"W | L20 | 1211' | S31°44'13"W |
| L5 | 1706' | N27°01'22"W | L13 | 657' | S77°39'10"W | L21 | 1186' | S32°29'58"W |
| L6 | 1703' | N26°01'15"W | L14 | 650' | N81°16'05"W | L22 | 1410' | S26°48'28"W |
| L7 | 1442' | N29°43'13"W | L15 | 727' | N62°19'26"W | L23 | 1685' | S22°06'51"W |
| L8 | 1202' | N37°05'26"W | L16 | 702' | S65°57'57"W | L24 | 1657' | S22°30'16"W |



Washburn Land Surveying
www.WashburnSurveying.com
970-232-9645

MULTI-WELL PLAN ELDER PAD (WEST LATERALS)

SECTION: 11
TOWNSHIP: 7N
RANGE: 65W
6TH P.M.
WELD COUNTY, CO



NOTE:
ELDER HNB & HNC LATERALS &
RUSCH HNB LATERAL SHOWN ON
THIS PAGE.
SEE PAGES 4, 5 & 6 FOR ELDER HC
LATERALS.

LEGEND:

- ALIQUOT CORNER AS DESCRIBED
- CALCULATED POSITION
- SURFACE HOLE LOCATION (SHL)
- ▲ LANDING POINT LOCATION (LPL)
- BOTTOM HOLE LOCATION (BHL)