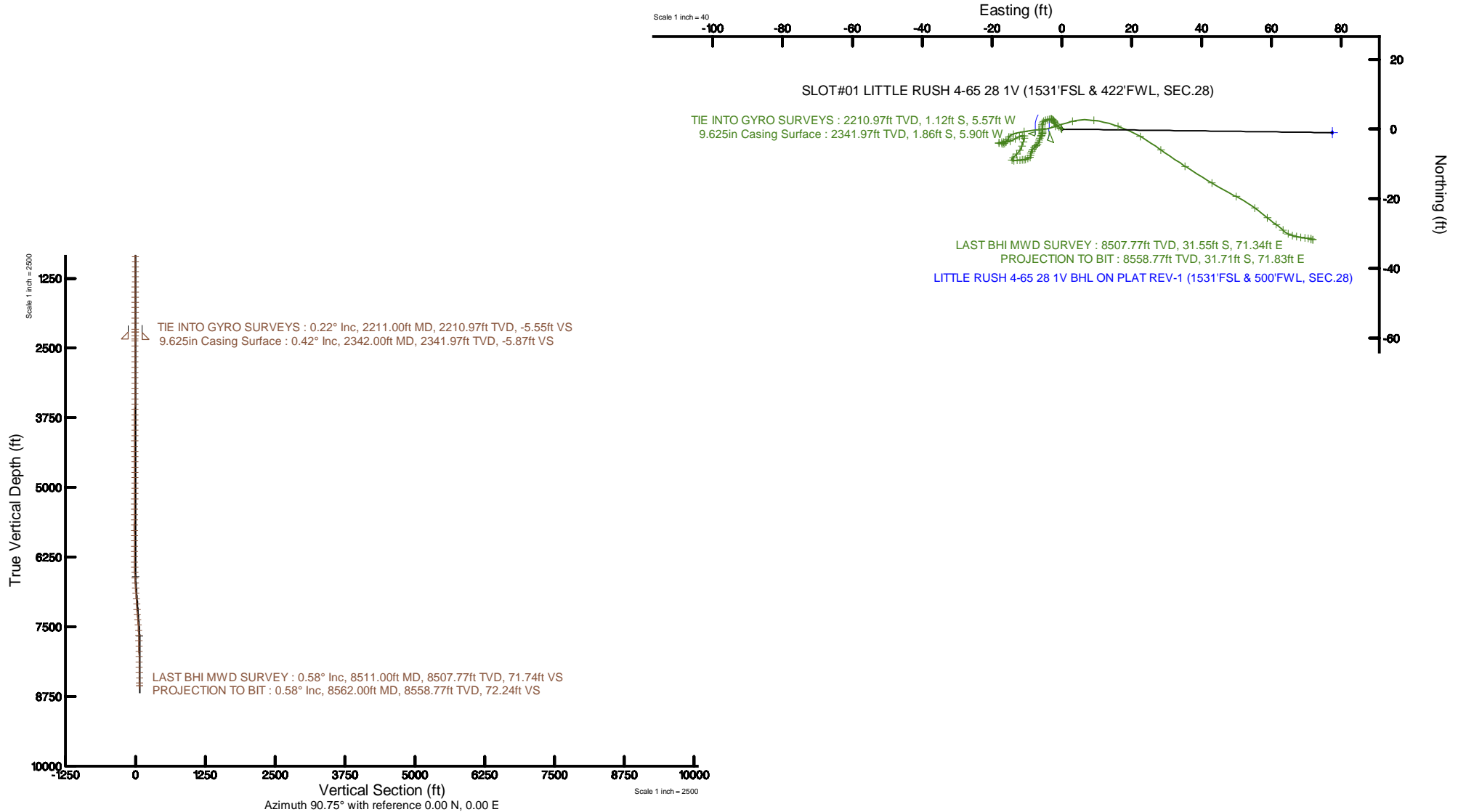


# Burlington Resources

Location: COLORADO Slot: SLOT#01 LITTLE RUSH 4-65 28 1V (1531'FSL & 422'FWL, SEC.28)  
Field: ARAPAHOE COUNTY (NAD83/TN) Well: LITTLE RUSH 4-65 28 1V  
Facility: SEC.28-T04S-R65W Wellbore: LITTLE RUSH 4-65 28 1V PWB

Plot reference wellpath is LITTLE RUSH 4-65 28 1V (REV-A.0) PWB	Grid System: NAD83 / Lambert Colorado SP, Central Zone (502), US feet
True vertical depths are referenced to RIG (24KB) (RKB)	North Reference: True north
Measured depths are referenced to RIG (24KB) (RKB)	Scale: True distance
RIG (24KB) (RKB) to Mean Sea Level: 5720 feet	Depths are in feet
Mean Sea Level to Mud line (At Slot: SLOT#01 LITTLE RUSH 4-65 28 1V (1531'FSL & 422'FWL, SEC.28)): 0 feet	Created by: bensjacj on 2017-08-08
Coordinates are in feet referenced to Slot	Database: WA_DEN_Denver_Defn

## BURLINGTON RESOURCES



REFERENCE WELLPATH IDENTIFICATION			
Operator	Burlington Resources	Slot	SLOT#01 LITTLE RUSH 4-65 28 1V (1531'FSL & 422'FWL, SEC.28)
Area	COLORADO	Well	LITTLE RUSH 4-65 28 1V
Field	ARAPAHOE COUNTY (NAD83/TN)	Wellbore	LITTLE RUSH 4-65 28 1V AWB
Facility	SEC.28-T04S-R65W		

REPORT SETUP INFORMATION			
Projection System	NAD83 / Lambert Colorado SP, Central Zone (502), US feet	Software System	WellArchitect® 5.1
North Reference	True	User	Bensjacj
Scale	0.999985	Report Generated	08/08/2017 at 9:34 AM
Convergence at slot	0.52° East	Database/Source file	WA_DEN_Denver_Defn/LITTLE_RUSH_4-65_28_1V_AWP.xml

WELLPATH LOCATION						
	Local coordinates		Grid coordinates		Geographic coordinates	
	North[ft]	East[ft]	Easting[US ft]	Northing[US ft]	Latitude	Longitude
Slot Location	0.00	0.00	3231637.82	1670564.24	39°40'17.820"N	104°40'37.590"W
Facility Reference Pt			3231637.82	1670564.24	39°40'17.820"N	104°40'37.590"W
Field Reference Pt			3256721.09	1679994.75	39°41'48.650"N	104°35'15.610"W

WELLPATH DATUM			
Calculation method	Minimum curvature	RIG (24'KB) (RKB) to Facility Vertical Datum	5720.00ft
Horizontal Reference Pt	Slot	RIG (24'KB) (RKB) to Mean Sea Level	5720.00ft
Vertical Reference Pt	RIG (24'KB) (RKB)	RIG (24'KB) (RKB) to Mud Line at Slot (SLOT#01 LITTLE RUSH 4-65 28 1V (1531'FSL & 422'FWL, SEC.28))	5720.00ft
MD Reference Pt	RIG (24'KB) (RKB)	Section Origin	N 0.00, E 0.00 ft
Field Vertical Reference	Mean Sea Level	Section Azimuth	90.75°

REFERENCE WELLPATH IDENTIFICATION			
Operator	Burlington Resources	Slot	SLOT#01 LITTLE RUSH 4-65 28 1V (1531'FSL & 422'FWL, SEC.28)
Area	COLORADO	Well	LITTLE RUSH 4-65 28 1V
Field	ARAPAHOE COUNTY (NAD83/TN)	Wellbore	LITTLE RUSH 4-65 28 1V AWB
Facility	SEC.28-T04S-R65W		

WELLPATH DATA (69 stations)								
MD [ft]	Inclination [°]	Azimuth [°]	TVD [ft]	Vert Sect [ft]	North [ft]	East [ft]	DLS [°/100ft]	Comments
2211.00	0.220	178.310	2210.97	-5.55	-1.12	-5.57	0.03	TIE INTO GYRO SURVEYS
2278.00	0.400	209.480	2277.97	-5.66	-1.46	-5.68	0.36	
2372.00	0.430	207.390	2371.97	-5.97	-2.05	-6.00	0.04	
2467.00	0.370	211.870	2466.97	-6.29	-2.63	-6.33	0.07	
2562.00	0.340	179.620	2561.97	-6.45	-3.17	-6.49	0.21	
2656.00	0.410	203.440	2655.96	-6.57	-3.76	-6.62	0.18	
2750.00	0.430	221.900	2749.96	-6.93	-4.33	-6.99	0.14	
2844.00	0.150	228.810	2843.96	-7.26	-4.68	-7.32	0.30	
2938.00	0.240	229.560	2937.96	-7.49	-4.88	-7.56	0.10	
3033.00	0.470	215.060	3032.96	-7.86	-5.33	-7.93	0.26	
3127.00	0.340	235.920	3126.96	-8.31	-5.80	-8.39	0.21	
3221.00	0.460	187.480	3220.95	-8.58	-6.33	-8.67	0.37	
3316.00	0.290	221.810	3315.95	-8.79	-6.89	-8.88	0.29	
3410.00	0.510	177.070	3409.95	-8.92	-7.49	-9.01	0.39	
3504.00	0.280	221.960	3503.95	-9.04	-8.08	-9.15	0.39	
3599.00	0.540	250.590	3598.94	-9.61	-8.40	-9.72	0.34	
3693.00	0.330	232.470	3692.94	-10.24	-8.71	-10.36	0.26	
3787.00	0.280	290.840	3786.94	-10.67	-8.79	-10.79	0.32	
3882.00	0.410	245.460	3881.94	-11.20	-8.85	-11.31	0.31	
3976.00	0.500	279.560	3975.94	-11.90	-8.92	-12.02	0.30	
4070.00	0.560	257.860	4069.93	-12.76	-8.95	-12.88	0.22	
4165.00	0.430	276.890	4164.93	-13.56	-9.01	-13.68	0.22	
4260.00	0.350	288.740	4259.93	-14.20	-8.87	-14.31	0.12	
4354.00	0.990	46.300	4353.92	-13.89	-8.22	-14.00	1.27	
4448.00	0.810	43.470	4447.91	-12.86	-7.17	-12.95	0.20	
4543.00	0.880	35.310	4542.90	-11.99	-6.09	-12.07	0.15	
4637.00	0.860	15.470	4636.89	-11.40	-4.82	-11.46	0.32	
4732.00	0.650	24.980	4731.88	-11.00	-3.65	-11.05	0.26	
4826.00	0.680	5.460	4825.88	-10.73	-2.61	-10.77	0.24	
4921.00	0.140	293.640	4920.87	-10.79	-2.00	-10.82	0.68	
5015.00	0.500	272.040	5014.87	-11.31	-1.94	-11.34	0.40	
5110.00	0.610	241.300	5109.87	-12.16	-2.17	-12.19	0.33	
5204.00	1.030	242.520	5203.86	-13.34	-2.80	-13.38	0.45	
5299.00	0.930	250.600	5298.84	-14.82	-3.45	-14.87	0.18	
5393.00	0.510	272.950	5392.84	-15.95	-3.68	-16.00	0.53	
5487.00	0.310	264.010	5486.83	-16.63	-3.68	-16.67	0.22	
5582.00	0.390	259.910	5581.83	-17.20	-3.77	-17.25	0.09	
5676.00	0.590	260.390	5675.83	-17.99	-3.90	-18.04	0.21	
5771.00	0.620	97.910	5770.83	-17.96	-4.06	-18.01	1.26	
5866.00	0.340	93.350	5865.82	-17.17	-4.14	-17.22	0.30	
5960.00	0.220	120.440	5959.82	-16.73	-4.25	-16.79	0.19	
6054.00	0.400	37.440	6053.82	-16.38	-4.08	-16.43	0.46	
6149.00	0.440	41.270	6148.82	-15.94	-3.55	-15.99	0.05	
6243.00	0.460	37.260	6242.82	-15.49	-2.97	-15.53	0.04	
6337.00	0.530	20.370	6336.81	-15.11	-2.27	-15.15	0.17	

REFERENCE WELLPATH IDENTIFICATION			
Operator	Burlington Resources	Slot	SLOT#01 LITTLE RUSH 4-65 28 1V (1531'FSL & 422'FWL, SEC.28)
Area	COLORADO	Well	LITTLE RUSH 4-65 28 1V
Field	ARAPAHOE COUNTY (NAD83/TN)	Wellbore	LITTLE RUSH 4-65 28 1V AWB
Facility	SEC.28-T04S-R65W		

WELLPATH DATA (69 stations)								
MD [ft]	Inclination [°]	Azimuth [°]	TVD [ft]	Vert Sect [ft]	North [ft]	East [ft]	DLS [°/100ft]	Comments
6431.00	1.410	68.650	6430.80	-13.90	-1.44	-13.92	1.20	
6526.00	2.410	80.630	6525.74	-10.85	-0.69	-10.86	1.13	
6620.00	2.910	85.550	6619.64	-6.53	-0.18	-6.53	0.58	
6715.00	2.810	71.300	6714.53	-1.93	0.75	-1.92	0.75	
6809.00	3.520	75.340	6808.38	3.03	2.22	3.06	0.79	
6903.00	4.100	97.330	6902.18	9.15	2.52	9.18	1.66	
6998.00	4.510	110.240	6996.91	16.04	0.80	16.05	1.10	
7093.00	3.970	119.320	7091.65	22.45	-2.10	22.43	0.91	
7188.00	4.610	125.930	7186.39	28.46	-5.95	28.38	0.85	
7282.00	5.620	123.060	7280.01	35.44	-10.68	35.30	1.11	
7377.00	5.280	120.750	7374.58	43.15	-15.45	42.96	0.43	
7471.00	4.440	117.480	7468.24	50.15	-19.34	49.90	0.94	
7565.00	3.280	127.410	7562.03	55.56	-22.66	55.26	1.42	
7660.00	2.180	128.810	7656.92	59.16	-25.44	58.83	1.16	
7755.00	1.680	125.450	7751.87	61.73	-27.38	61.37	0.54	
7849.00	1.360	135.240	7845.83	63.66	-28.97	63.28	0.44	
7944.00	0.900	112.960	7940.82	65.15	-30.06	64.76	0.66	
8039.00	0.700	109.200	8035.81	66.39	-30.55	66.00	0.22	
8133.00	0.760	99.430	8129.80	67.55	-30.84	67.16	0.15	
8228.00	0.770	101.550	8224.79	68.80	-31.07	68.40	0.03	
8322.00	0.740	93.840	8318.78	70.03	-31.23	69.63	0.11	
8416.00	0.400	101.650	8412.78	70.96	-31.34	70.55	0.37	
8511.00	0.580	107.620	8507.77	71.74	-31.55	71.34	0.20	LAST BHI MWD SURVEY
8562.00	0.580	107.620	8558.77	72.24	-31.71	71.83	0.00	PROJECTION TO BIT

HOLE & CASING SECTIONS - Ref Wellbore: LITTLE RUSH 4-65 28 1V AWB Ref Wellpath: LITTLE RUSH 4-65 28 1V AWP									
String/Diameter	Start MD [ft]	End MD [ft]	Interval [ft]	Start TVD [ft]	End TVD [ft]	Start N/S [ft]	Start E/W [ft]	End N/S [ft]	End E/W [ft]
9.625in Casing Surface	24.00	2342.00	2318.00	24.00	2341.97	0.00	0.00	-1.86	-5.90
8.5in Open Hole	2342.00	8562.00	6220.00	2341.97	8558.77	-1.86	-5.90	-31.71	71.83

TARGETS								
Name	TVD [ft]	North [ft]	East [ft]	Grid East [US ft]	Grid North [US ft]	Latitude	Longitude	Shape
SEC.28-T04S-R65W	0.00	39.46	0.00	3231637.46	1670603.70	39°40'18.210"N	104°40'37.590"W	polygon
LITTLE RUSH 4-65 28 1V BHL ON PLAT REV-1 (1531'FSL & 500'FWL, SEC.28)	8690.00	-1.01	77.41	3231715.24	1670563.93	39°40'17.810"N	104°40'36.600"W	point

REFERENCE WELLPATH IDENTIFICATION			
Operator	Burlington Resources	Slot	SLOT#01 LITTLE RUSH 4-65 28 1V (1531'FSL & 422'FWL, SEC.28)
Area	COLORADO	Well	LITTLE RUSH 4-65 28 1V
Field	ARAPAHOE COUNTY (NAD83/TN)	Wellbore	LITTLE RUSH 4-65 28 1V AWB
Facility	SEC.28-T04S-R65W		

WELLPATH COMPOSITION - Ref Wellbore: LITTLE RUSH 4-65 28 1V AWB					Ref Wellpath: LITTLE RUSH 4-65 28 1V AWP	
Start MD	End MD	Positional Uncertainty Model		Log Name/Comment	Wellbore	
[ft]	[ft]					
24.00	2211.00	BHI Generic gyro - continuous (Standard)		GYRO SURVEYS <24 - 2211>	LITTLE RUSH 4-65 28 1V AWB	
2211.00	8511.00	Custom BHI NaviTrak (IFR1, Standard Rotating+Axial Corr) (Rockies 0.03Gt model)		BHGE MWD NAVITRAK (STANDARD) <2211 - 8511>	LITTLE RUSH 4-65 28 1V AWB	
8511.00	8562.00	Blind Drilling (std)		Projection to bit	LITTLE RUSH 4-65 28 1V AWB	

REFERENCE WELLPATH IDENTIFICATION			
Operator	Burlington Resources	Slot	SLOT#01 LITTLE RUSH 4-65 28 1V (1531'FSL & 422'FWL, SEC.28)
Area	COLORADO	Well	LITTLE RUSH 4-65 28 1V
Field	ARAPAHOE COUNTY (NAD83/TN)	Wellbore	LITTLE RUSH 4-65 28 1V AWB
Facility	SEC.28-T04S-R65W		

WELLPATH COMMENTS				
MD [ft]	Inclination [°]	Azimuth [°]	TVD [ft]	Comment
2211.00	0.220	178.310	2210.97	TIE INTO GYRO SURVEYS
8511.00	0.580	107.620	8507.77	LAST BHI MWD SURVEY
8562.00	0.580	107.620	8558.77	PROJECTION TO BIT