

Inspection Photos  
Operator: WPX Energy  
Location/API #: 067-05589  
Date: 10-22-2019



Photo 1. View of the former well and facilities area where vegetation is not becoming established.





Photo 2. View of the southern project area from the southeastern edge facing northwestward. Revegetation is progressing here with grasses such as western wheatgrass and smooth brome.





Photo 3. View of the beginning of Transect 1, within the project area, facing westward.





Photo 4. View from the end of Transect 1, within the project area, facing eastward.



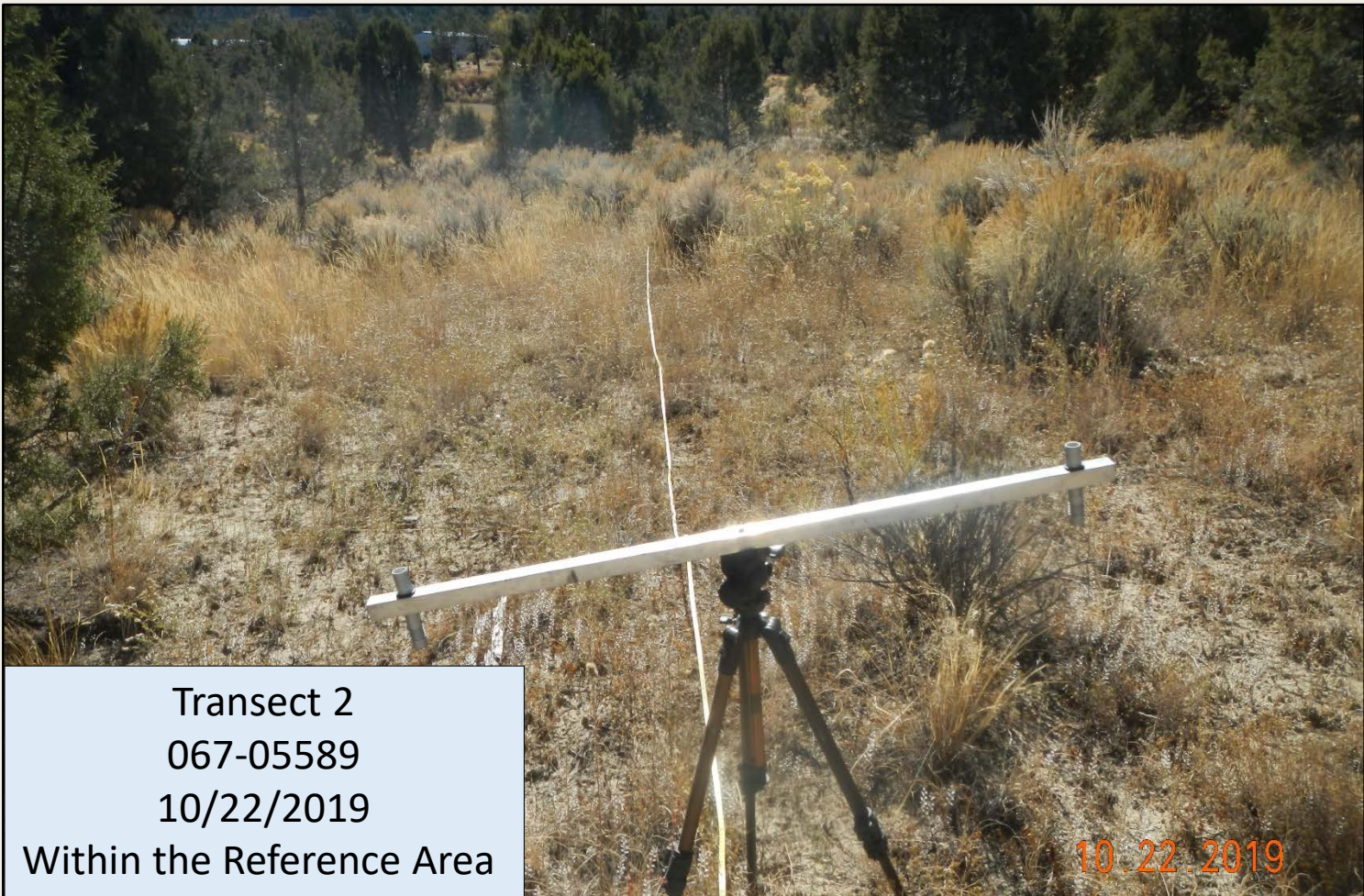


Photo 5. View from the beginning of Transect 2, within the reference area, facing southward.





Photo 6. View from the end of Transect 2, within the reference area, facing northward.