



Scale: 5" / 100'
Measured Depth Log

Well Name Judy 3-4

Location T1N-R65W-SEC 34

State CO

County WELD

Country USA

Rig Number ENSIGN 122

API Number 05-123-50294

AFE # 102042

Geographic Region ROCKIES

Field CHERRY

Spud Date 9/8/2019

Surface Coordinates T1N-R65W-SEC 34
620' FSL, 743' FWL
104°39'29.840"W
40°00'08.100"N

Bottom Hole Coordinates T1S-R65W-SEC 3
470' FNL, 580' FWL
104°39'26.640"W
39°59'57.336"N

Ground Elevation 5,139'

K.B. Elevation 5,152'

Logged Interval 5,000' **To** TBD

Total Depth TBD

Formation CODELL

Type of Drilling Fluid WBM

Operator

Company Confluence Resources

Address 1001 17th St, Denver, CO 80202



Geologist

Name ROB STERLING

Company CONFLUENCE RESOURCES

Address 1001 17th St, Denver, CO 80202



Color Coding

Oil	Condensate	Gas
Note	Core	Pressure
Error	Water	Seal

Other

SERVICE TWO MAN LOGGING

START DATE 9/8/2019

EQUIPMENT ML-552

PERSONEL ROBERT KELLEY/THOR TRUEBLOOD

Rock Types

UNKNOWN	DOLOMITE	SHALE GRAY	TILL
ANHYDRITE	CHERT	SHALE COLORED	BENTONITE
GYPSUM	COAL	SILTSTONE	TUFF
SALT	MARLSTONE	SANDSTONE	IGNEOUS
SIDERITE or LIMONITE	CLAYSTONE	CONGLOMERATE	METAMORPHIC
LIMESTONE	SHALE	BRECCIA	CEMENT

Accessories

Fossils

ALGAE
AMPHIPORA
BELEMNITE
BIOCLASTIC
BRACHIOPOD
BRYOZOA
CEPHALOPOD
CORAL
CRINOID
ECHINOID
FISH
FORAMINIFERA

Fossil

FOSTIL
GASTROPOD
OOLITE
OSTRACOD
PELECYPOD
PELLET
PISOLITE
PLANT REMAINS
PLANT SPORES
SCAPHOPOD
STROMATOPOROID

Minerals

ANHYDRITIC

Argillaceous

ARGILLITE GRAIN
BENTONITE
BITUMENOUS SUBSTANCE
BRECCIA FRAGMENTS
CALCAREOUS
CARBONACEOUS FLAKES
CHTDK
CHTLT
COAL - THIN BEDS
DOLOMITIC
FELDSPAR
FERRUGINOUS PELLET
FERRUGINOUS

Glauconite

GYPSIFEROUS
HEAVY MINERAL
KAOLIN
MARLSTONE
MINERAL CRYSTALS
NODULES
PHOSPHATE PELLETS
PYRITE
SALT CAST
SANDY
SILICEOUS
SILTY
TUFFACEOUS

Stringer

ANHYDRITE STRINGER
BENTONITE STRINGER
COAL STRINGER
DOLOMITE STRINGER
GYPSUM STRINGER
LIMESTONE STRINGER
MARLSTONE (CALC) STRG
MARLSTONE (DOL) STRG
SANDSTONE STRINGER
SHALE STRINGER
SILTSTONE STRINGER

Other Symbols

Oil Show

ORGANIC
PINPOINT

FORMATION TOP
GAS SHOW

Rounding

LITHOGRAPHIC
MICROXLN

- DEAD
- EVEN
- QUESTIONABLE
- SPOTTED STAINING

Porosity

- E EARTHY
- F FENESTRAL
- F FRACTURE
- X INTERCRYSTALLINE
- INTEROOLITIC
- MOLDIC

VUGGY

Engineering

- BIT
- CASING
- CONNECTION (LEFT)
- CONNECTION (RIGHT)
- CONNECTION GAS
- CORE - LOST
- CORE - RECOVERED
- DST INTERVAL
- FAULT

- MN DEPTH
- NORMAL FAULT
- OIL SHOW
- OVERTURNED STRATA
- REVERSE FAULT
- SIDEWALL CORE (LEFT)
- SIDEWALL CORE (RIGHT)
- SLIDE
- SURVEY
- TRIP GAS
- WIRELINE TESTED - LEFT
- WIRELINE TESTED - RT

- ANGULAR
- ROUNDED
- SUBANG
- SUBRND

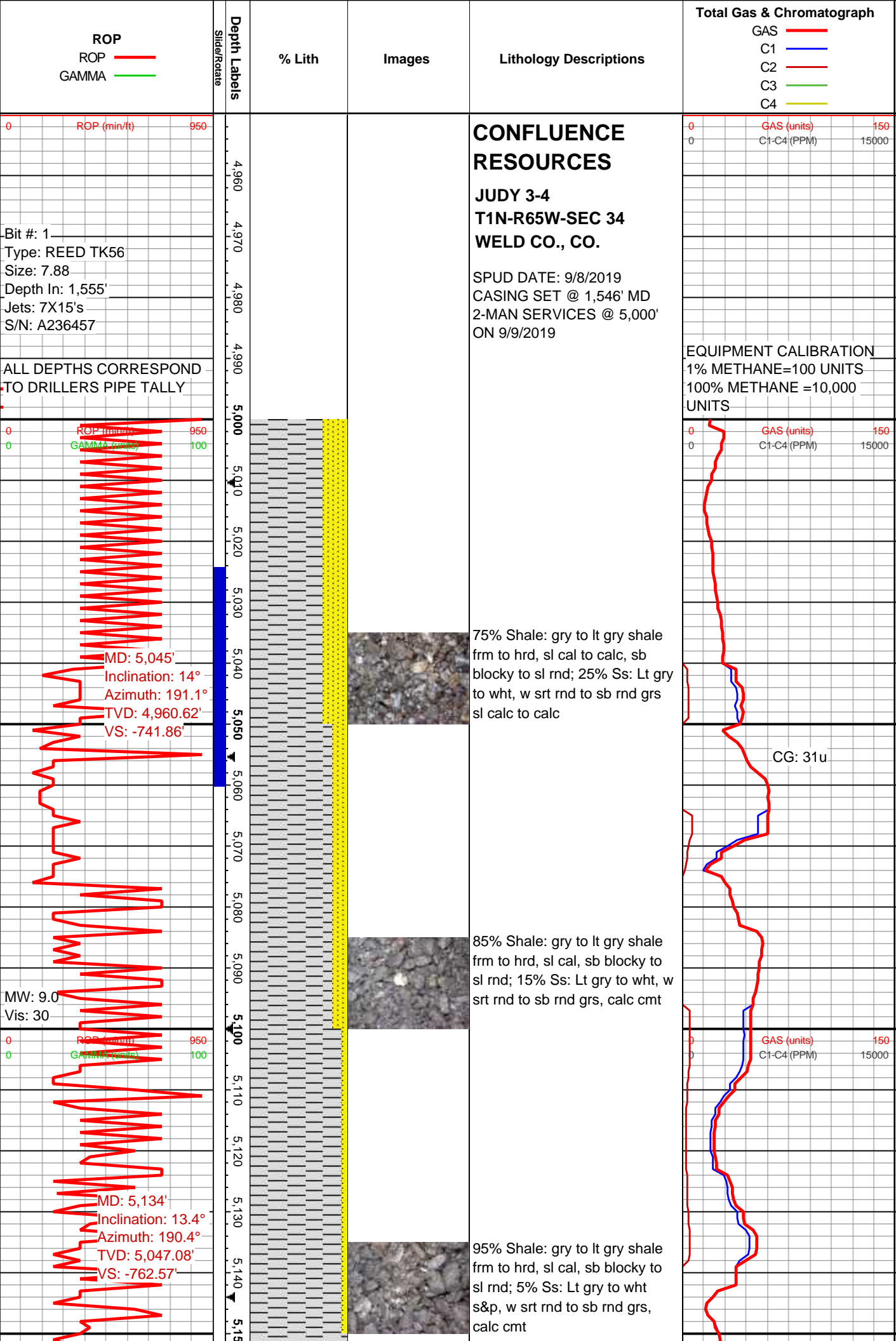
Textures

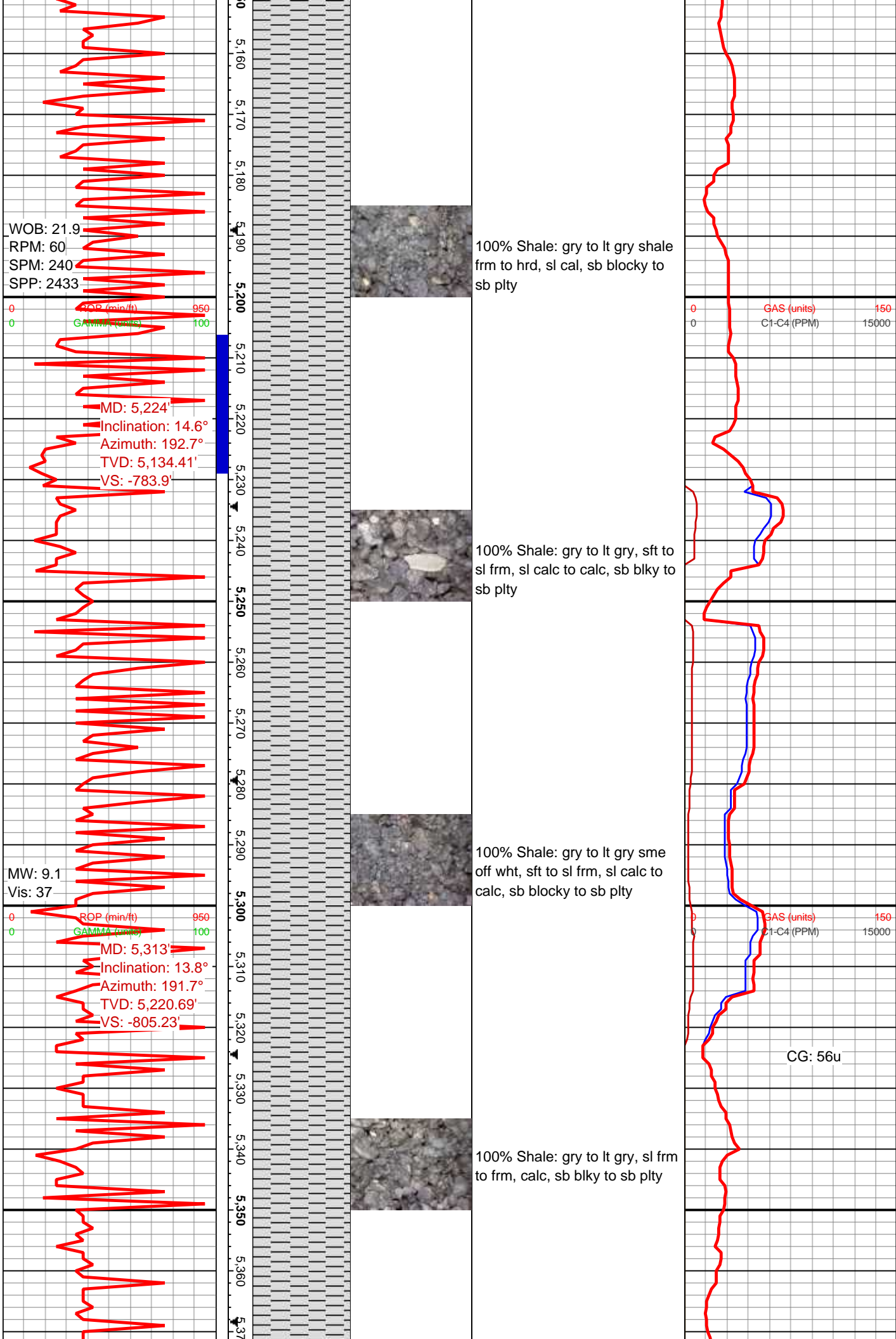
- BOUNDSTONE
- CHALKY
- CRYPTOXLN
- E EARTHY
- FINELYXLN
- GRAINSTONE

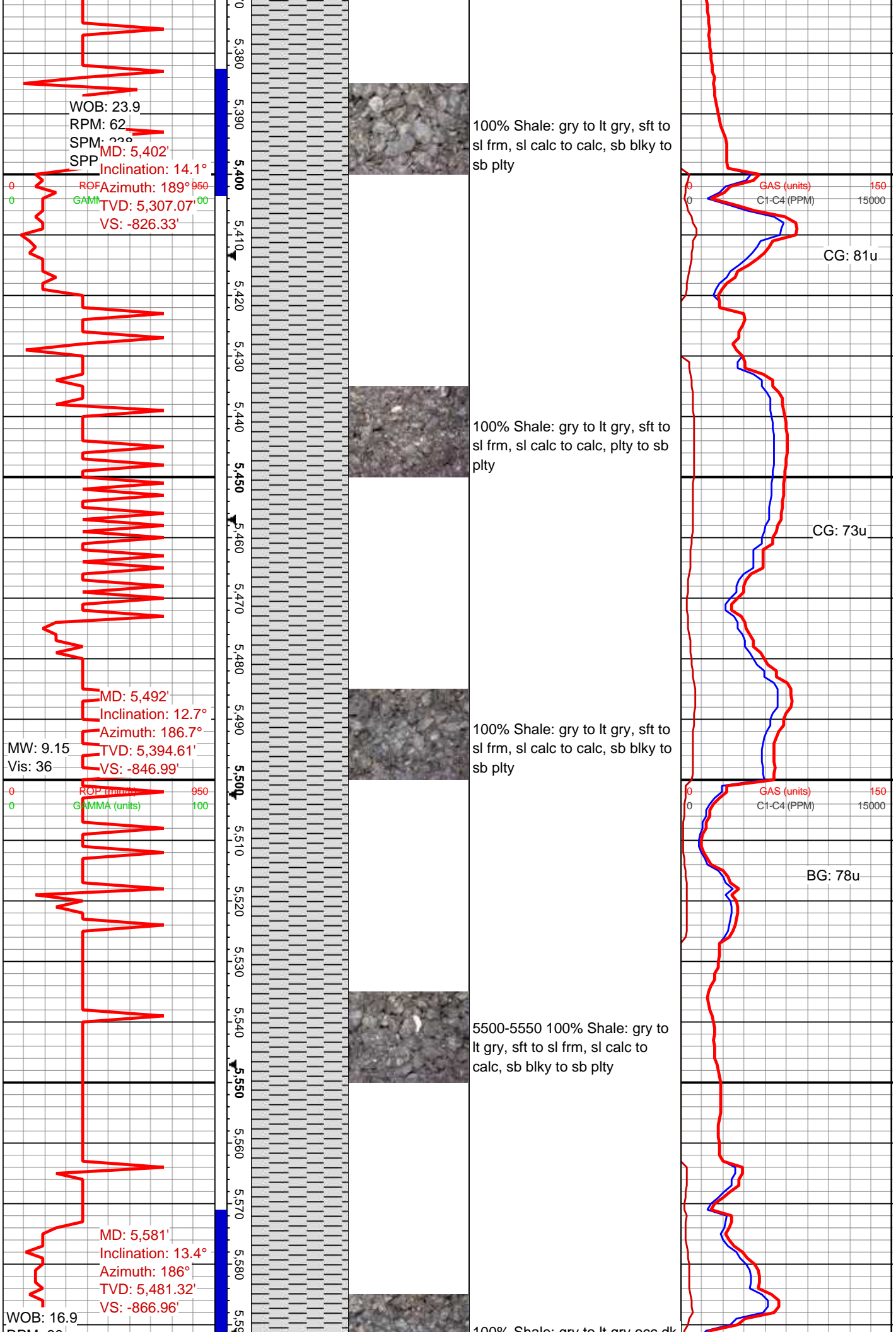
- MUDSTONE
- PACKSTONE
- WACKESTONE

Sorting

- MODERATE
- POOR
- WELL

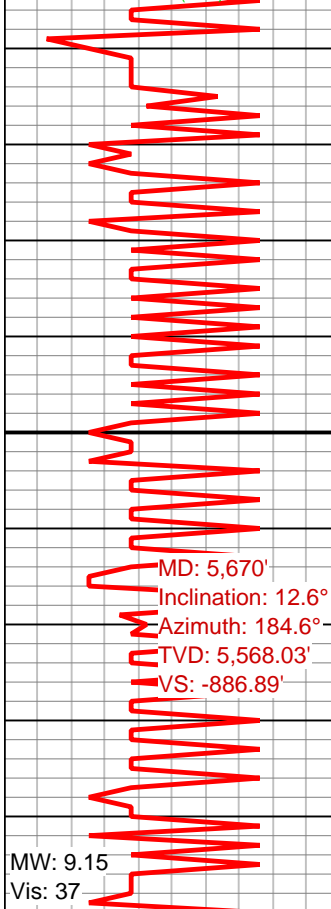






RPM: 60
SPM: 229
SPP: 2451

ROP (min/ft) 950
GAMMA (units) 100



MD: 5,670'
Inclination: 12.6°
Azimuth: 184.6°
TVD: 5,568.03'
VS: -886.89'

MW: 9.15
Vis: 37

ROP (min/ft) 950
GAMMA (units) 100



MD: 5,760'
Inclination: 12.4°
Azimuth: 186.2°
TVD: 5,655.9'
VS: -906.29'

WOB: 22.6
RPM: 67
SPM: 226
SPP: 2622

ROP (min/ft) 950
GAMMA (units) 100



100% Shale: gry to lt gry blk dk
gry, sft to sl frm, sl calc to calc,
plty to sb plty

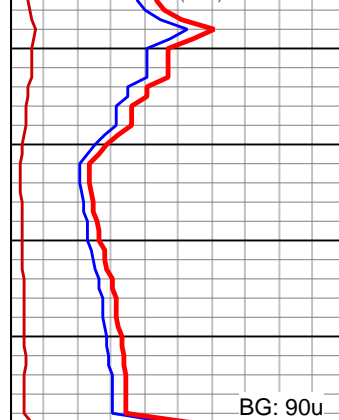
100% Shale: gry to lt gry, sft to
sl frm, sl calc to calc, sb blkly to
sb plty

100% Shale: gry to lt gry, sl frm
to frm, calc, sb blkly to sb plty

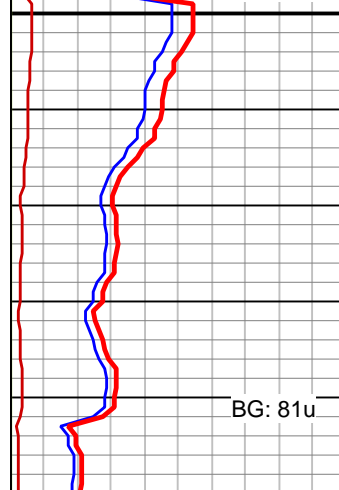
100% Shale: gry to lt gry, sft to
sl frm, sl calc to calc, sb blkly to
sb plty

100% Shale: gry to lt gry, sl frm
to frm, calc, sb blkly to sb plty tr
cal

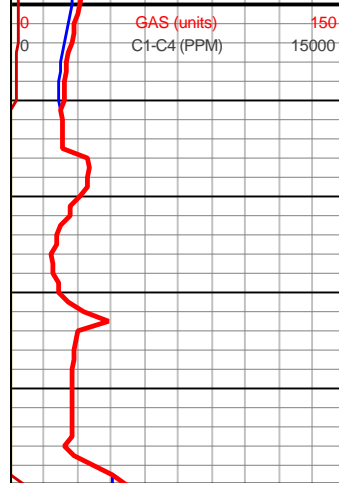
GAS (units) 150
C1-C4 (PPM) 15000



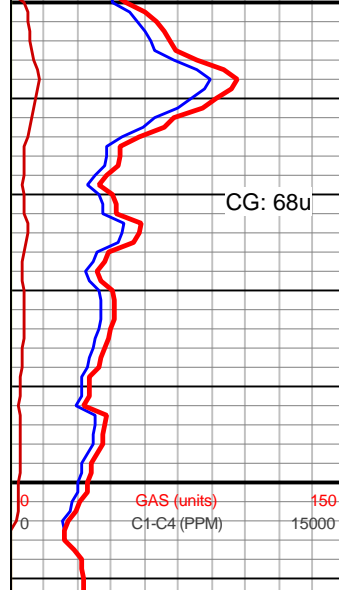
BG: 90u



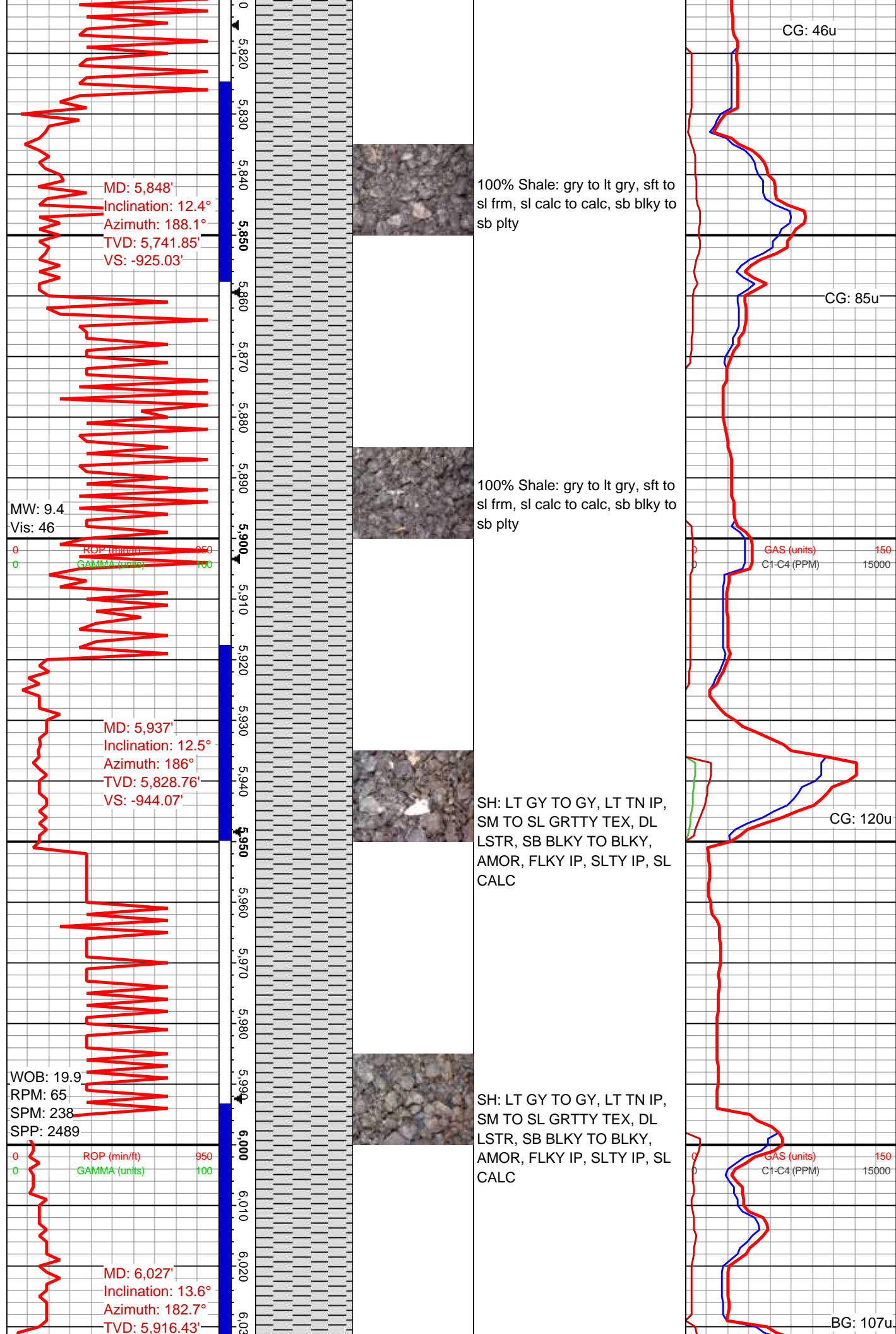
BG: 81u

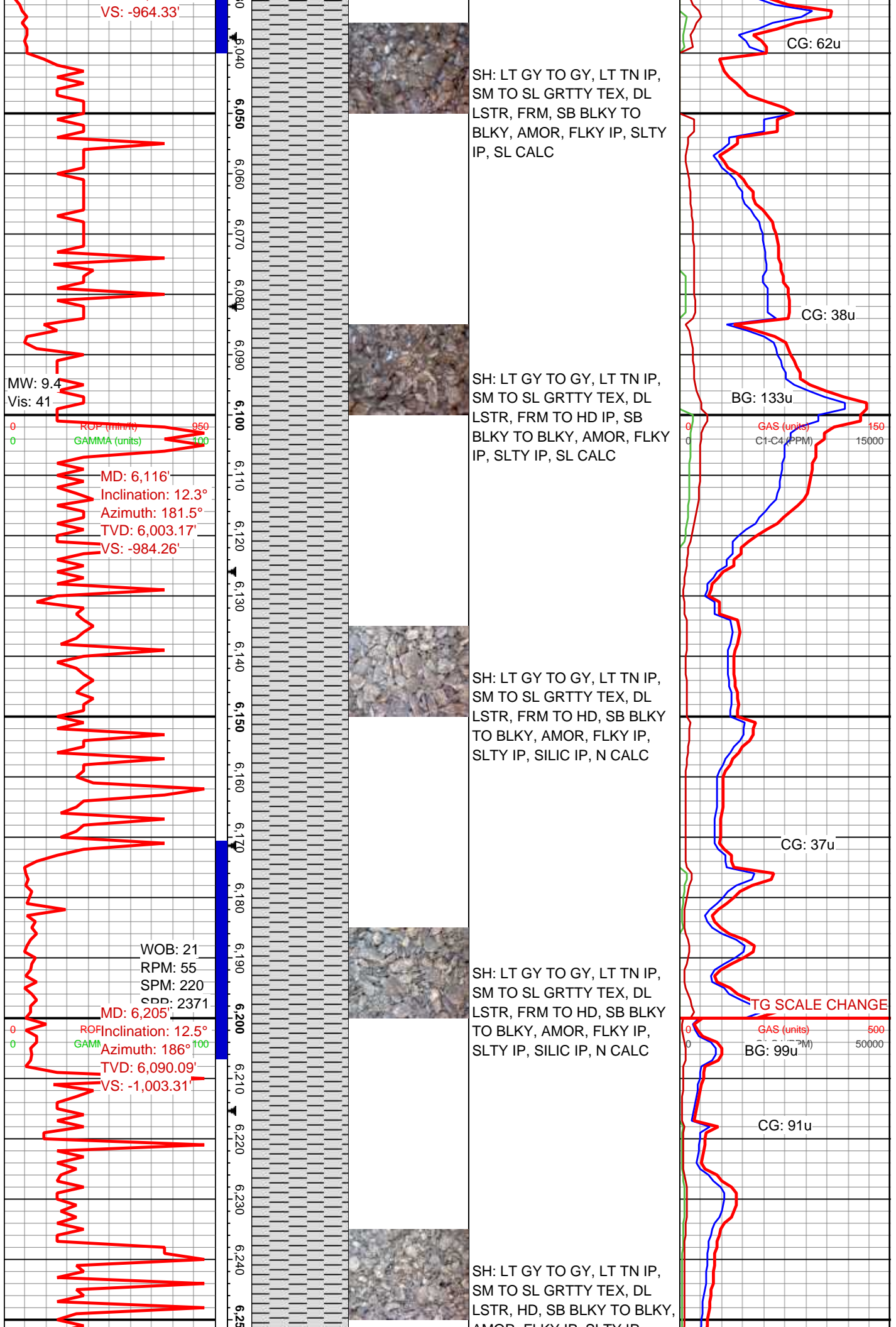


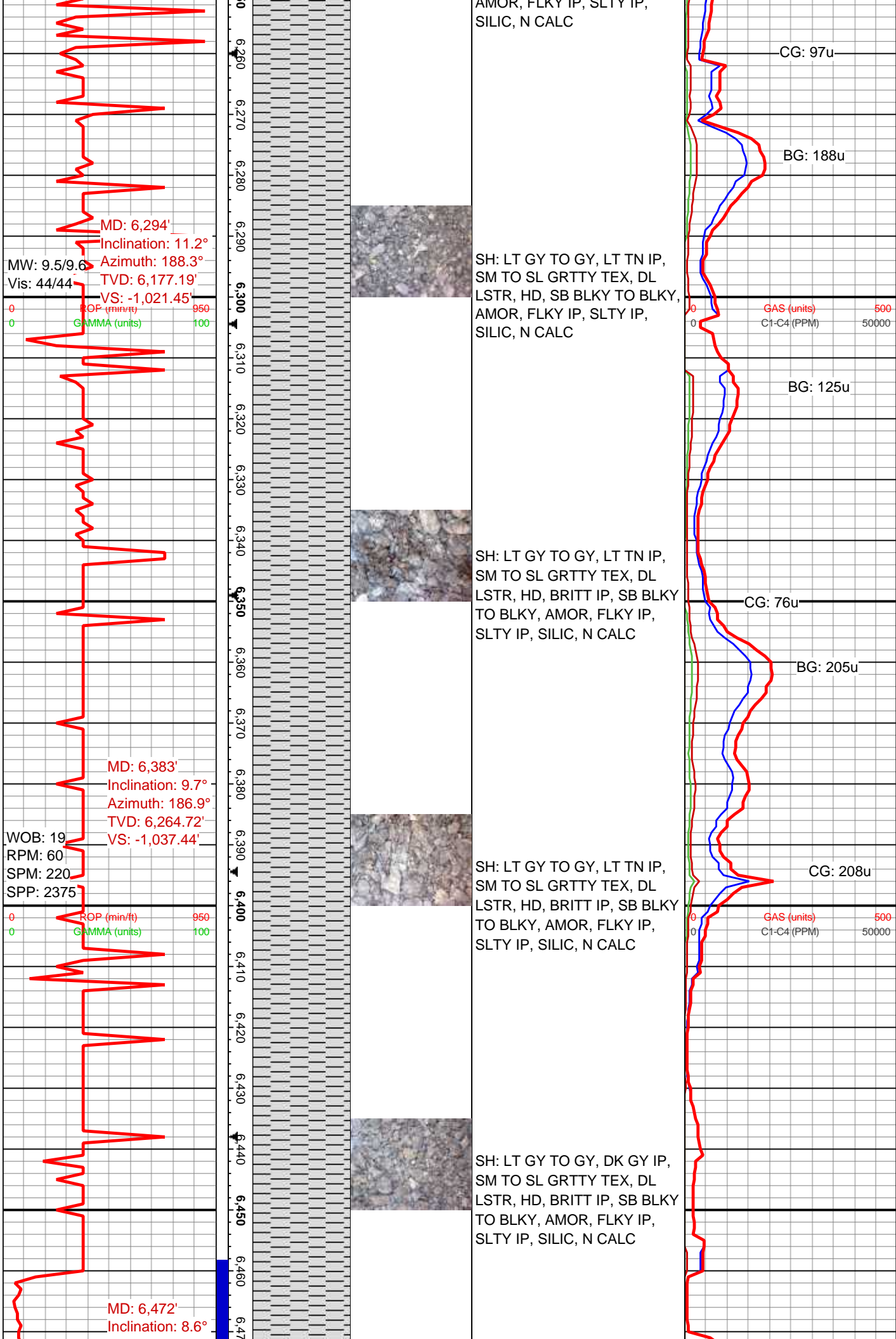
CG: 68u

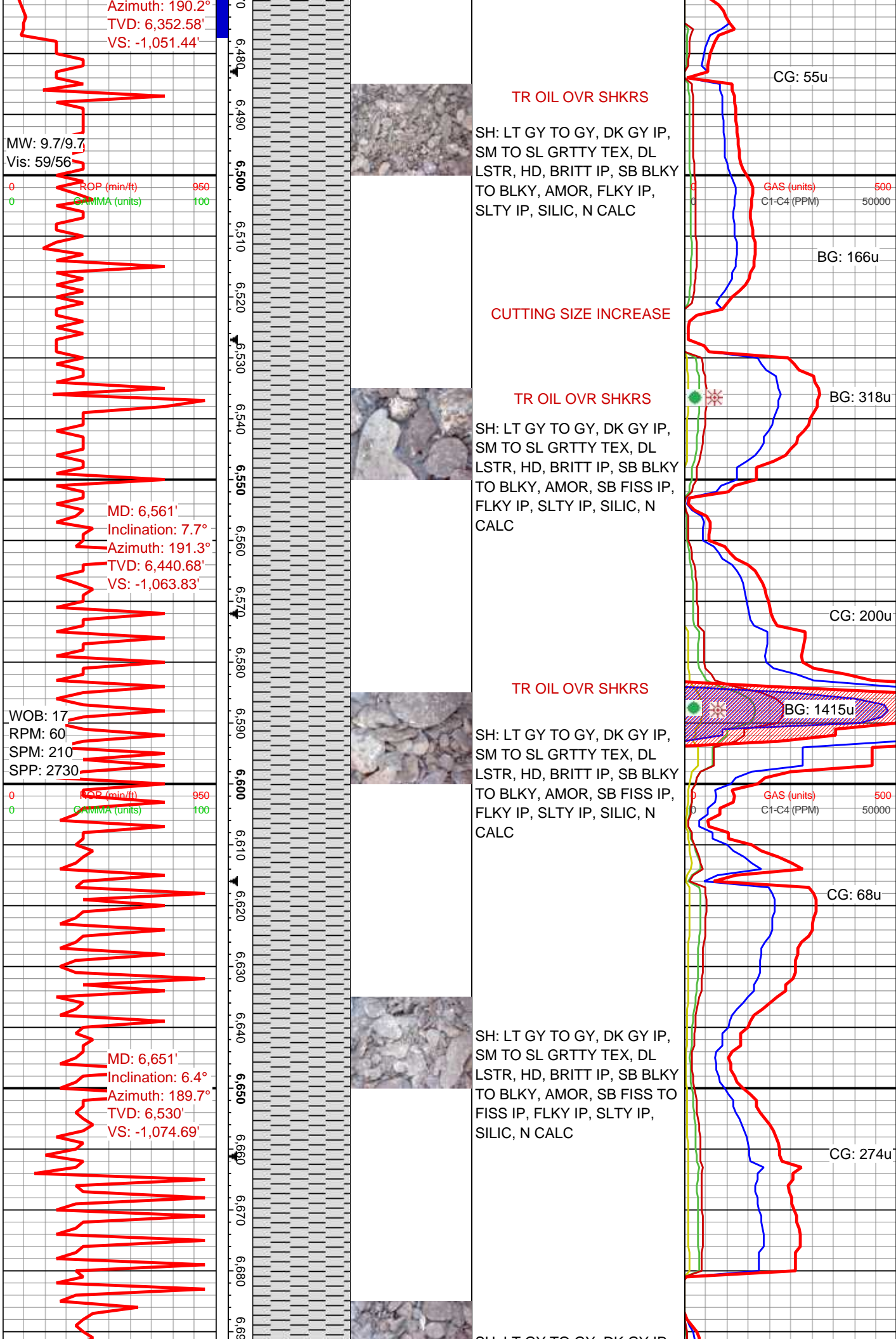


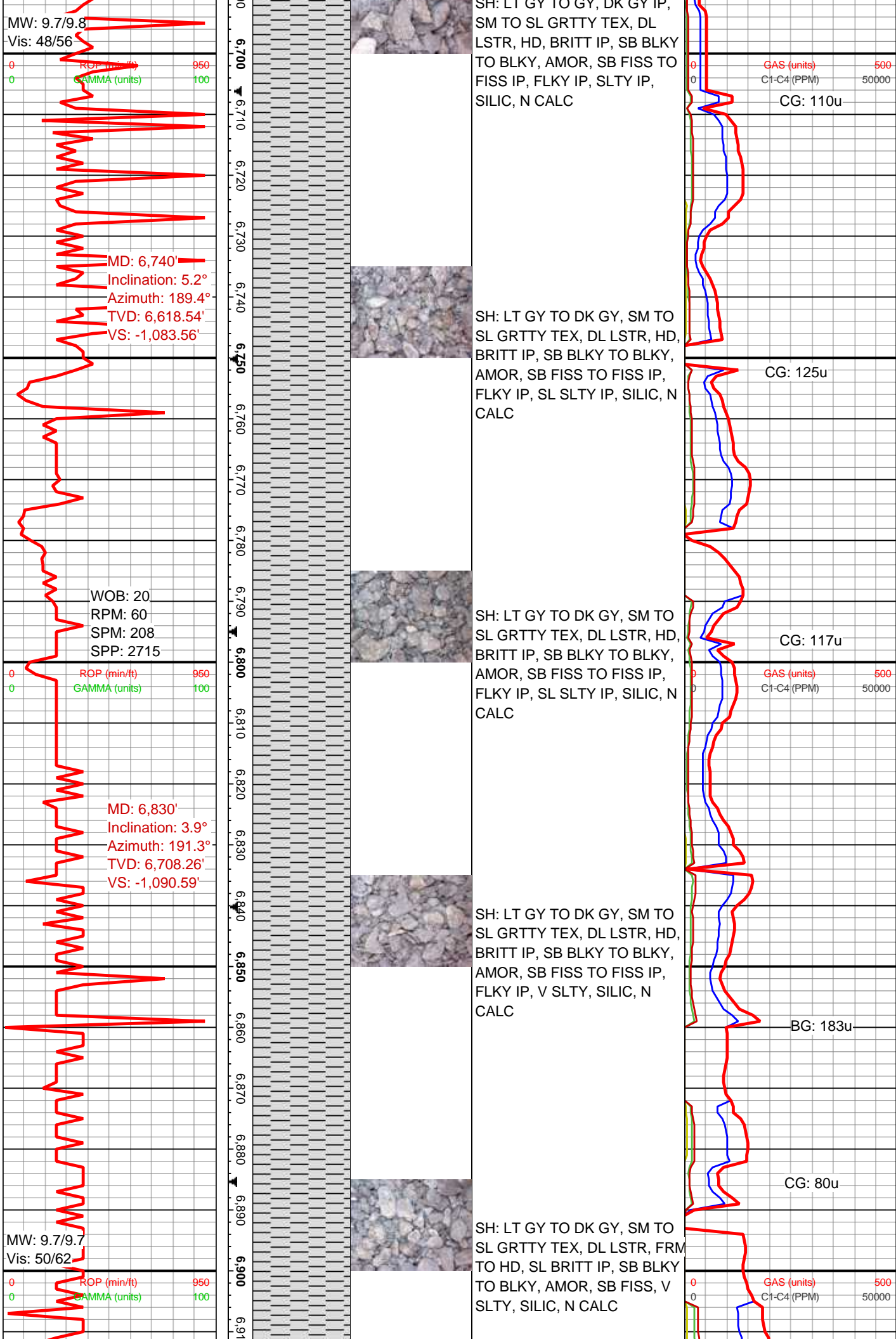
GAS (units) 150
C1-C4 (PPM) 15000

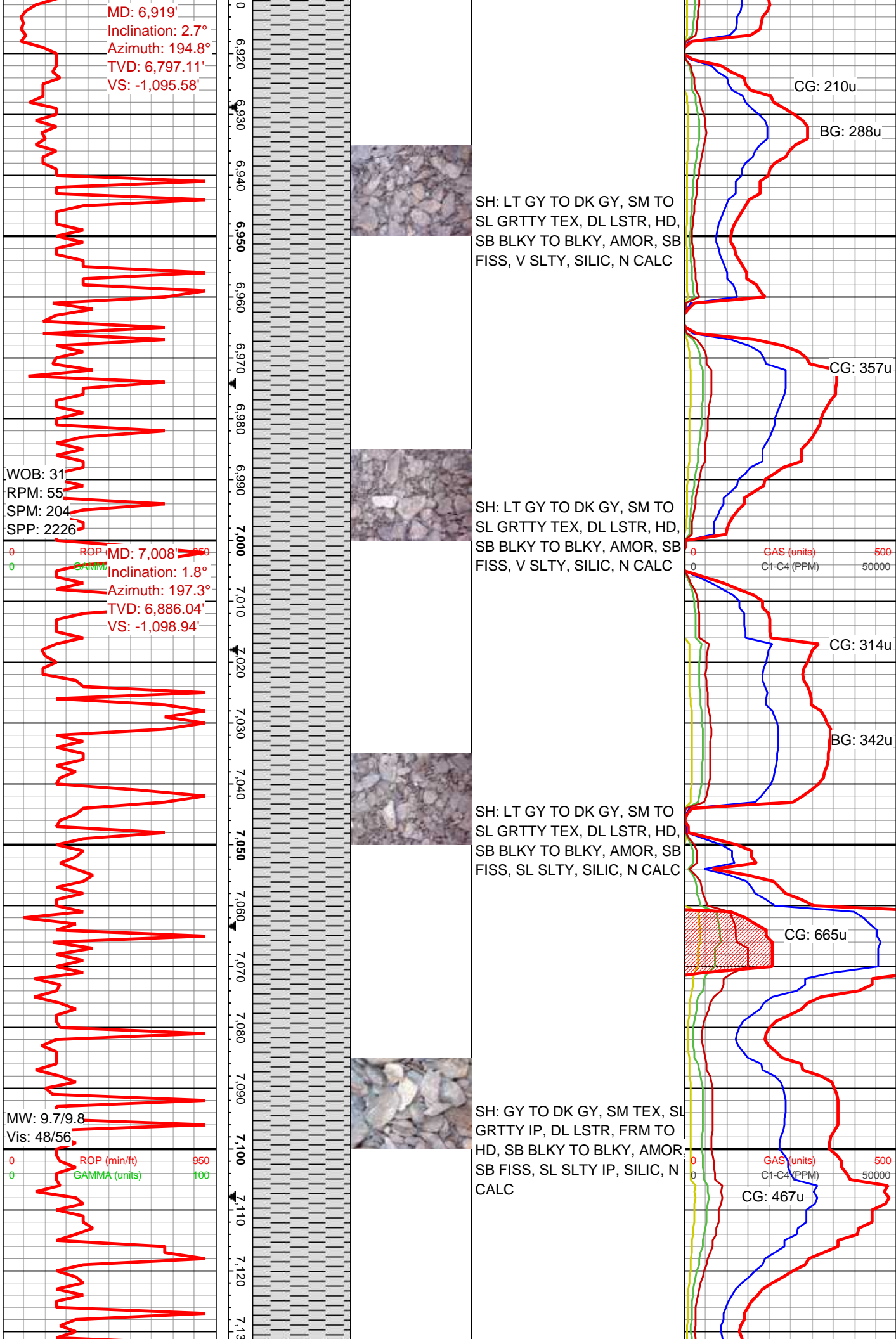


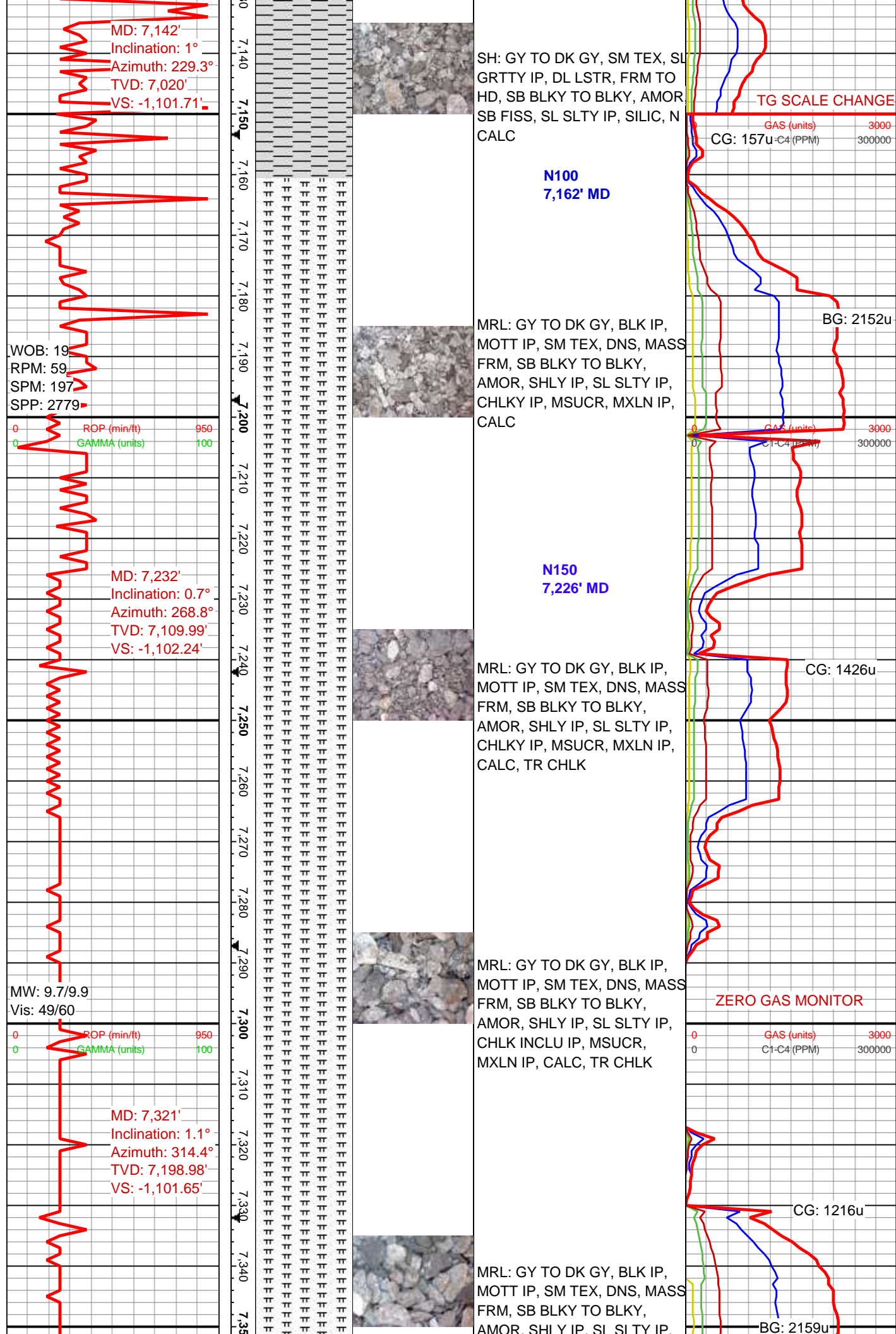


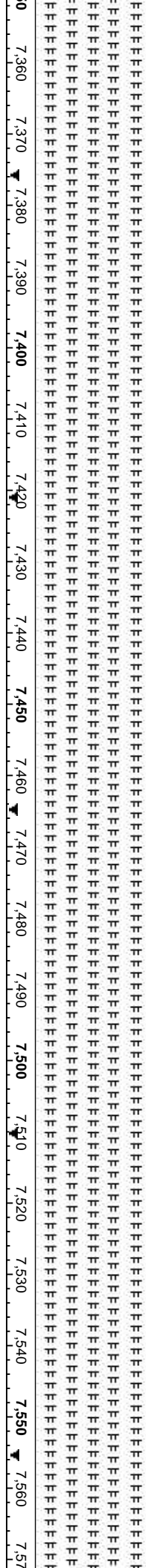
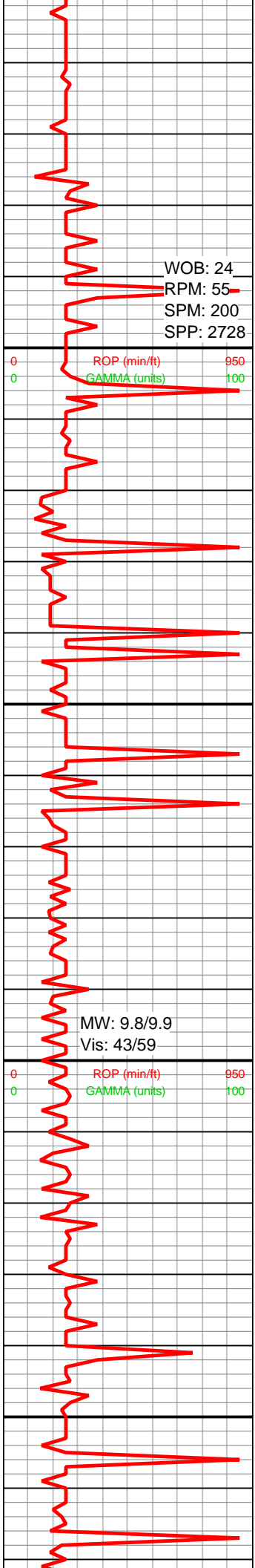












CHLK INCLU IP, MSUCR, MXLN IP, CALC, TR CHLK

MRL: GY TO DK GY, BLK IP, MOTT IP, SM TEX, DNS, MASS FRM TO HD, SB BLKY TO BLKY, AMOR, SHLY IP, SL SLTY IP, CHLK INCLU IP, MSUCR, MXLN IP, CALC, TR CHLK: LT GY TO GY, WHT IP, BLKY, FRM, SUCR, CALC

MRL: GY TO DK GY, BLK IP, MOTT IP, SM TEX, DNS, MASS FRM TO HD, SB BLKY TO BLKY, AMOR, SHLY IP, SL SLTY IP, CHLK INCLU IP, MSUCR, MXLN IP, CALC, 20% CHLK: LT GY TO GY, WHT IP, BLKY, FRM, SUCR, CALC

MRL: GY TO DK GY, BLK IP, MOTT IP, SM TEX, DNS, MASS FRM TO HD, SB BLKY TO BLKY, AMOR, SHLY IP, SL SLTY IP, CHLK INCLU IP, MSUCR, MXLN IP, CALC, 10% CHLK: LT GY TO GY, WHT IP, BLKY, FRM, SUCR, CALC

MRL: GY TO DK GY, BLK IP, MOTT IP, SM TEX, DNS, MASS FRM TO HD, SB BLKY TO BLKY, AMOR, SHLY IP, SL SLTY IP, CHLK INCLU IP, MSUCR, MXLN, CALC, 50% CHLK: LT GY TO GY, WHT, BLKY, FRM, SLTY, SUCR, CALC

