



FORM F-106

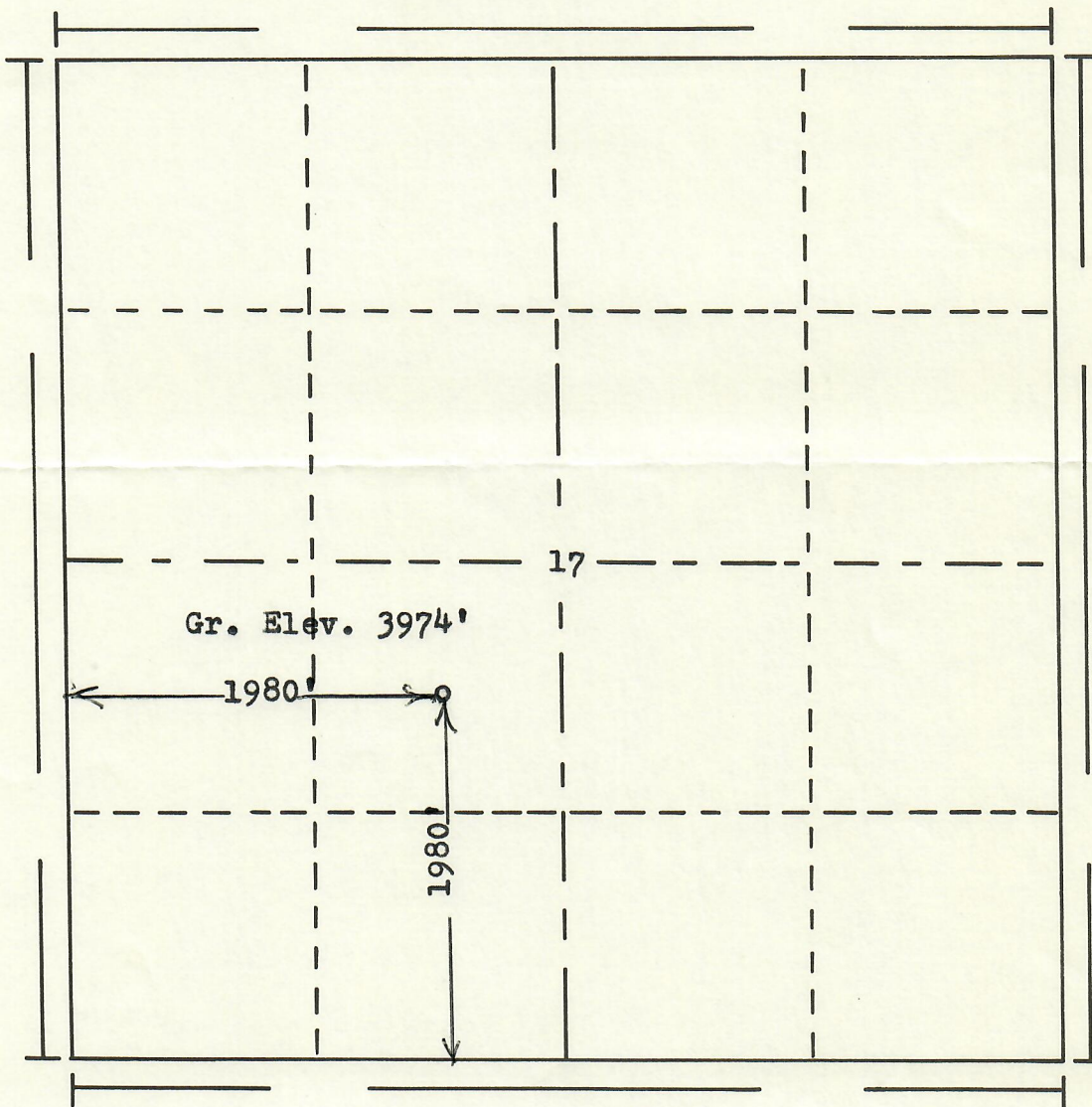


RECEIVED

JAN 6 1976 N

COLO. OIL & GAS CONS. COMM.

R. 52W



Scale... 1" = 1000'

Powers Elevation Company, Inc. of Denver, Colorado
has in accordance with a request from Mr. Hill
for Warren A. Knight Jr. & LeClair-Westwood Inc.
determined the location of No.1 Gillham
to be CNE SW Section 17 Township 9N
Range 52W of the 6th Principal Meridian
Logan County, Colorado

I hereby certify that this plat is an
accurate representation of a correct
survey showing the location of

Date: 12-29-75

Bice D. Helling
Licensed Land Surveyor No. 2853
State of Colorado