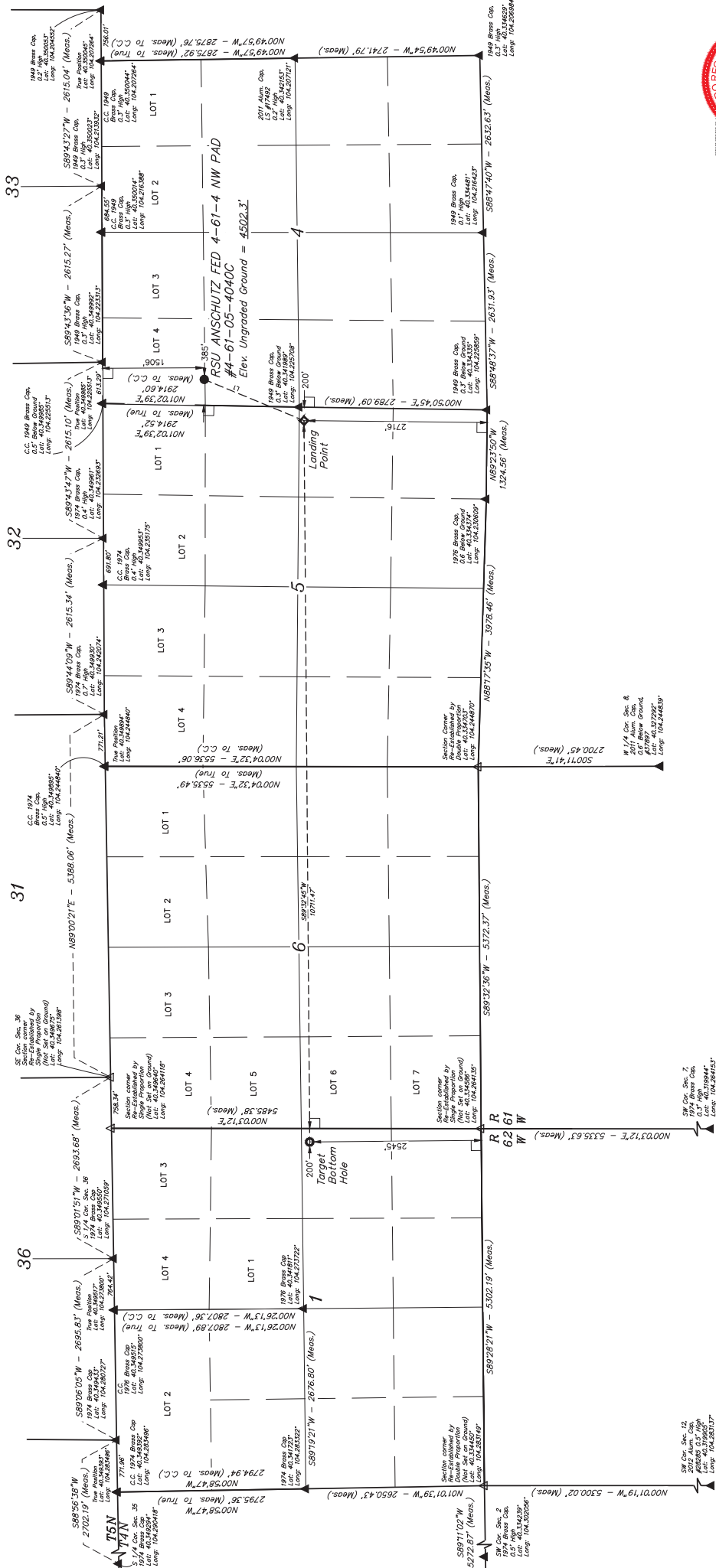


T4N, R61W, 6th P.M.

BILL BARRETT CORPORATION
RSU ANSCHUTZ FED #461-4 NW PAD
#4-61-05-4040C
NW 1/4 NW 1/4, SECTION 4, T4N, R61W, 6th P.M.
WELD COUNTY, COLORADO
BASIS OF BEARINGS
BASIS OF ELEVATION
SPOT ELEVATION LOCATED AT THE NORTHEAST CORNER OF
SECTION 24, T5N, R62W, 6th P.M. TAKEN FROM THE POINT
OF BEGINNING OF THE INTERIOR GEODESIC SURVEY, 1895,
MINUTE QUAD (TOPOGRAPHIC MAP) PUBLISHED BY THE UNITED
STATES DEPARTMENT OF THE INTERIOR, GEOLOGICAL SURVEY.
SAID ELEVATION IS MARKED AS BEING 4500 FEET.

LINE TABLE		
LINE	DIRECTION	LENGTH
L1	S2727.33°W	1602.65'



LEGEND:

- 90° SYMBOL
- PROPOSED WELLHEAD
- LANDING POINT
- SECTION CORNER LOCATED (NAD 83)
- SECTION CORNERS RE-ESTABLISHED (NAD 83)
- (Not Set on Ground)

PDOP = 1.3

NAD83 (SURFACE) LOCATION	NAD83 (LANDING POINT)	NAD83 (TARGET BOTTOM HOLE)
LATITUDE: -40°20'43.88" (40-348855)	LATITUDE: -40°20'43.88" (40-348855)	LATITUDE: -40°20'43.88" (40-348855)
LONGITUDE: -104°17'31.32" (104-225252)	LONGITUDE: -104°17'31.32" (104-225252)	LONGITUDE: -104°17'31.32" (104-225252)
STATE PLANE NAD 27 (CO. NORTH)	STATE PLANE NAD 27 (CO. NORTH)	STATE PLANE NAD 27 (CO. NORTH)
N 13°09'04.6" E 335586.08	N 13°09'04.6" E 335495.09	N 13°09'04.6" E 334459.13



THIS IS TO CERTIFY THAT THE ABOVE
NOTES OF ACTUAL SURVEY MADE
AND PLAT HEREON ARE TRUE AND
KNOWLEDGE AND BELIEF.

REV. 1 02-06-18 D.COX. (LP & BOTTOM HOLE CORRECTION)

JELLS, LLC
Corporate Office
Vernal, UT 84078 • (435) 798-1017
STANLEY, UT 84304 • (435) 798-1017
DRAVEN, UT 84304 • (435) 798-1017
WELL LOCATION PLAT