



HighPoint Resources
Project: Weld County, CO (NAD83)
Site: Sec 33-T12N-R63W
Well: Fox Creek 33-0362D
Wellbore: Wellbore #1
Design: Wellbore #1 (Fox Creek 33-0362D/Wellbore #1)

PROJECT DETAILS: Weld County, CO (NAD83)
Geodetic System: US State Plane 1983
Datum: North American Datum 1983
Ellipsoid: GRS 1980
Zone: Colorado Northern Zone
System Datum: Mean Sea Level
Local North: True

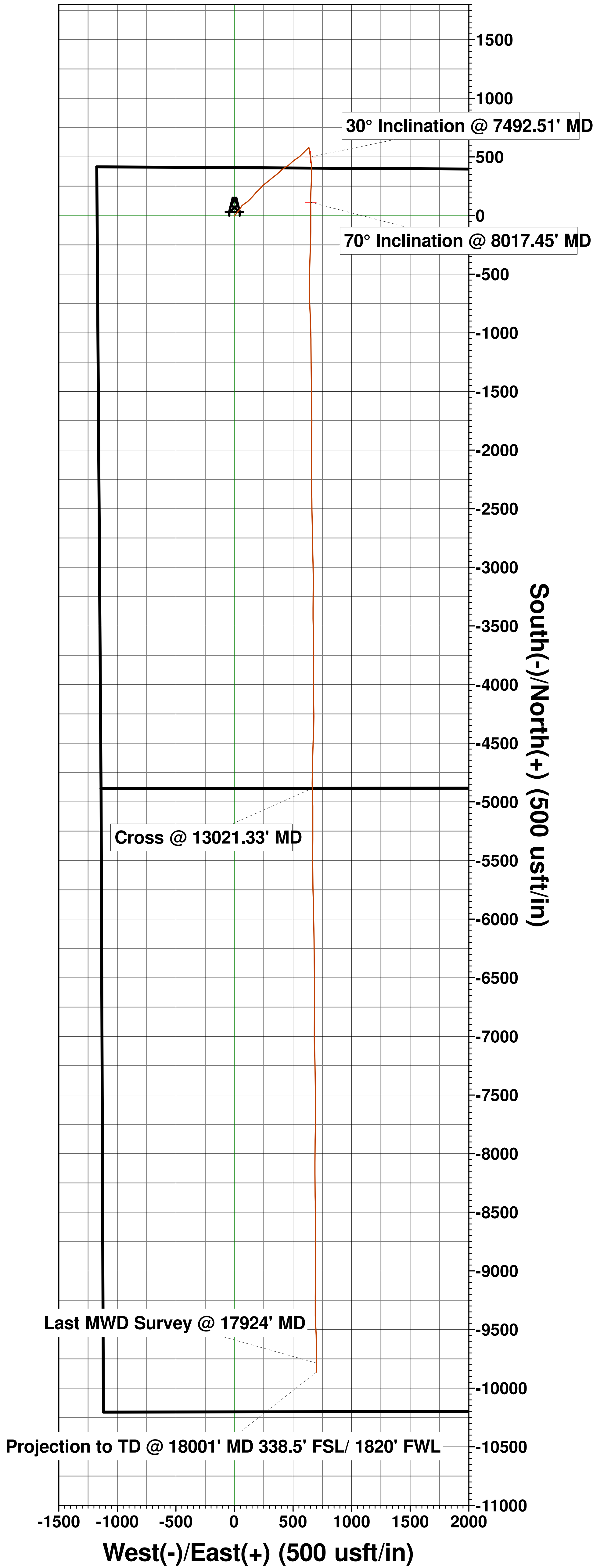
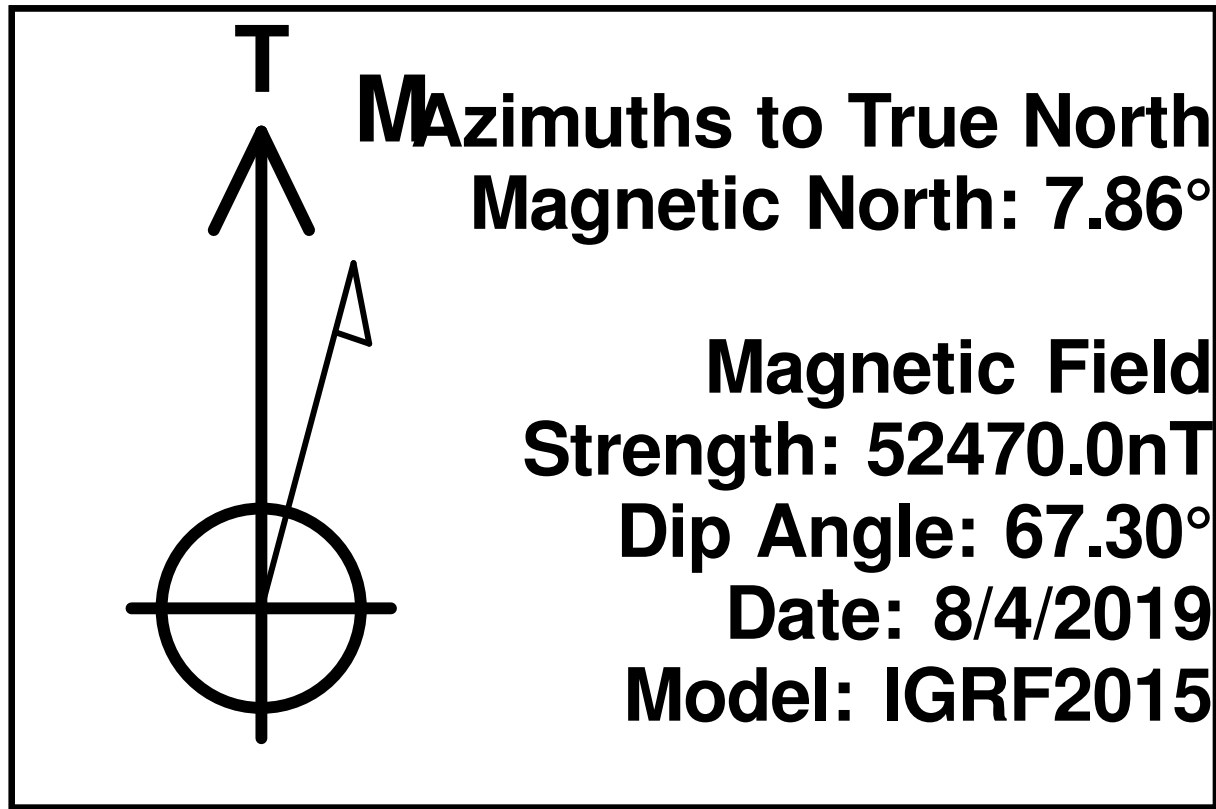
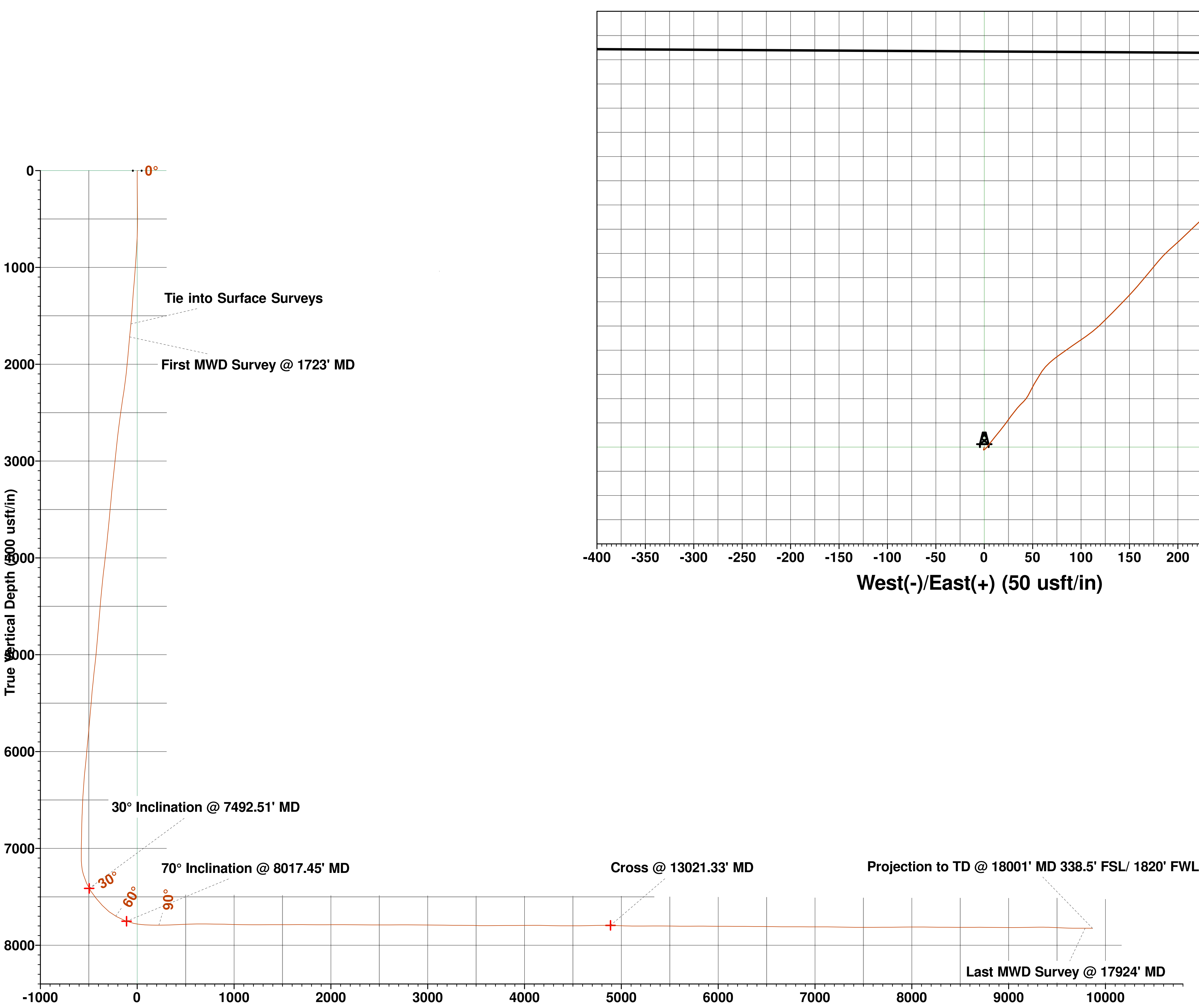
WELL DETAILS: Fox Creek 33-0362D

Ground Elevation:: 5469.60
RKB Elevation: KB @ 5486.10usft
Rig Name:

Northing	Easting	Latitude	Longitude
1598718.72	3291798.64	40.972070	-104.443346

ANNOTATIONS

MD	Inc	Azi	TVD	+N/-S	+E/-W	VSect	Departure	Annotation
1587.50	6.64	28.72	1583.66	65.07	51.55	-64.79	90.38	Tie into Surface Surveys
1723.00	6.67	34.34	1718.25	78.44	59.75	-78.12	106.09	First MWD Survey @ 1723' MD
7492.51	30.00	171.67	7413.46	499.56	648.44	-496.04	958.47	30° Inclination @ 7492.51' MD
8017.45	70.00	179.72	7752.26	113.39	650.44	-109.86	1344.39	70° Inclination @ 8017.45' MD
13021.33	88.70	179.17	7795.07	-4884.50	664.18	4888.02	6342.89	Cross @ 13021.33' MD
17924.00	89.90	180.30	7824.64	-9785.99	699.36	9789.63	11245.03	Last MWD Survey @ 17924' MD
18001.00	88.33	179.41	7825.83	-9862.98	699.56	9866.62	11322.02	Projection to TD @ 18001' MD 338.5' FSL/ 1820' FWL





Directional Survey Report

Company Name: High Point Resources

Well Name: Fox Creek 33-0362D

Field: DJ Basin

Rig ID: Cade 23

State/Prov: Colorado

County: Weld

Location: Hereford

API/UWI: 05-123-48706

Survey Company: Atlas Drilling Services

Job Number: 00236-HI-CO

Latitude: 40.972070

Longitude: -104.443346

Proposed Azimuth: 179.69

Declination: 7.86

North Reference: True

KB: 5486.10

Svy	Depth	Inc	Azm	TVD	NS	EW	VS	DLS	Northing	Easting	A/B	L/R	GTot	HTot	DipA
Tiein	1,587.50	6.64	28.72	1,583.66	65.07	51.55	-64.79	0	65.07	51.55			0	0	0
1	1723	6.67	34.34	1,718.25	78.44	59.75	-78.11	0.48	78.44	59.75			1.00	0.53	67.41
2	1817	7.38	48.05	1,811.55	86.98	67.32	-86.62	1.93	86.98	67.32			1.00	0.53	67.50
3	1913	9.24	54.40	1,906.54	95.59	78.18	-95.17	2.16	95.59	78.18			1.00	0.53	67.06
4	2008	9.94	55.06	2,000.21	104.73	91.10	-104.23	0.75	104.73	91.10			1.00	0.53	67.41
5	2103	10.43	55.98	2,093.71	114.23	104.95	-113.66	0.54	114.23	104.95			1.00	0.53	67.24
6	2198	11.14	47.12	2,187.04	125.29	118.80	-124.65	1.90	125.29	118.80			1.00	0.53	67.15
7	2293	11.84	43.86	2,280.14	138.56	132.28	-137.85	1.00	138.56	132.28			1.00	0.53	67.06
8	2388	12.20	44.13	2,373.05	152.80	146.02	-152.00	0.38	152.80	146.02			1.00	0.53	67.50
9	2483	10.16	40.38	2,466.25	166.38	158.44	-165.52	2.28	166.38	158.44			1.00	0.53	67.50
10	2578	9.99	40.03	2,559.78	179.08	169.17	-178.16	0.19	179.08	169.17			1.00	0.53	67.24
11	2673	9.85	39.24	2,653.36	191.68	179.61	-190.71	0.21	191.68	179.61			1.00	0.53	67.24
12	2769	9.41	48.27	2,748.02	203.26	190.66	-202.23	1.64	203.26	190.66			1.00	0.53	67.24
13	2864	8.93	48.09	2,841.80	213.36	201.95	-212.26	0.51	213.36	201.95			1.00	0.53	67.15
14	3056	8.53	44.26	3,031.58	233.51	222.97	-232.30	0.37	233.51	222.97			1.00	0.53	67.15
15	3245	8.40	40.25	3,218.52	254.09	241.68	-252.77	0.32	254.09	241.68			1.00	0.53	67.50
16	3340	8.48	49.94	3,312.50	263.89	251.52	-262.53	1.50	263.89	251.52			1.00	0.53	67.41
17	3436	8.66	52.37	3,407.42	272.86	262.66	-271.43	0.42	272.86	262.66			1.00	0.53	67.50
18	3531	8.75	53.16	3,501.33	281.56	274.11	-280.07	0.16	281.56	274.11			1.00	0.53	66.88
19	3625	8.71	52.76	3,594.24	290.15	285.50	-288.60	0.08	290.15	285.50			1.00	0.53	67.41
20	3721	8.84	50.08	3,689.12	299.28	296.94	-297.67	0.45	299.28	296.94			1.00	0.53	67.15
21	3816	8.31	46.73	3,783.06	308.67	307.54	-307.01	0.77	308.67	307.54			1.00	0.53	67.24
22	3911	9.90	51.62	3,876.86	318.45	318.94	-316.72	1.86	318.45	318.94			1.00	0.53	67.15
23	4005	10.43	51	3,969.38	328.82	331.89	-327.02	0.58	328.82	331.89			1.00	0.53	67.50
24	4100	10.91	52.10	4,062.74	339.76	345.66	-337.88	0.55	339.76	345.66			1.00	0.53	67.15
25	4195	11.09	51.40	4,155.99	350.98	359.90	-349.03	0.24	350.98	359.90			1.00	0.53	67.15
26	4291	8.88	50.16	4,250.53	361.49	372.81	-359.47	2.31	361.49	372.81			1.00	0.53	67.50
27	4386	8.22	49.28	4,344.48	370.62	383.58	-368.54	0.71	370.62	383.58			1.00	0.53	67.50
28	4481	7.42	46.42	4,438.59	379.28	393.17	-377.14	0.94	379.28	393.17			1.00	0.53	67.15
29	4576	7.07	45.58	4,532.84	387.60	401.79	-385.42	0.38	387.60	401.79			1.00	0.53	67.32
30	4671	8.13	53.82	4,627.00	395.65	411.39	-393.42	1.60	395.65	411.39			1.00	0.53	67.41
31	4767	8.57	55.72	4,721.98	403.69	422.78	-401.40	0.54	403.69	422.78			1.00	0.53	67.15
32	4862	8.88	57.22	4,815.89	411.65	434.80	-409.29	0.40	411.65	434.80			1.00	0.53	67.24
33	4957	9.50	58.93	4,909.67	419.66	447.67	-417.23	0.71	419.66	447.67			1.00	0.53	67.32

Svy	Depth	Inc	Azm	TVD	NS	EW	VS	DLS	Northing	Easting	A/B	L/R	GTot	HTot	DipA
34	5052	9.68	50.61	5,003.34	428.78	460.56	-426.28	1.47	428.78	460.56			1.00	0.53	67.32
35	5147	9.50	49.28	5,097.01	438.96	472.68	-436.40	0.30	438.96	472.68			1.00	0.53	67.15
36	5242	9.10	46.82	5,190.77	449.22	484.10	-446.59	0.59	449.22	484.10			1.00	0.51	67.06
37	5338	8.93	50.69	5,285.58	459.13	495.40	-456.44	0.66	459.13	495.40			1.00	0.53	67.15
38	5433	8.53	50.61	5,379.48	468.27	506.55	-465.53	0.42	468.27	506.55			1.00	0.53	67.41
39	5528	7.87	53.16	5,473.51	476.64	517.20	-473.84	0.79	476.64	517.20			1.00	0.53	67.41
40	5623	8.97	56.69	5,567.48	484.61	528.59	-481.74	1.28	484.61	528.59			1.00	0.53	67.15
41	5718	8.79	55.85	5,661.35	492.75	540.79	-489.82	0.23	492.75	540.79			1.00	0.53	65.92
42	5814	8.04	51.18	5,756.31	501.08	552.09	-498.09	1.06	501.08	552.09			1.00	0.53	67.15
43	5908	8.35	48.05	5,849.35	509.76	562.29	-506.71	0.58	509.76	562.29			1.00	0.53	67.15
44	6003	7.47	45.58	5,943.45	518.70	571.83	-515.60	0.99	518.70	571.83			1.00	0.53	67.41
45	6098	8.18	47.83	6,037.56	527.56	581.25	-524.40	0.81	527.56	581.25			1.00	0.53	67.41
46	6193	7.82	42.94	6,131.64	536.82	590.66	-533.62	0.81	536.82	590.66			1.00	0.53	67.41
47	6289	7.78	43.55	6,226.75	546.32	599.59	-543.06	0.10	546.32	599.59			1.00	0.53	67.06
48	6385	6.10	46.46	6,322.05	554.54	607.76	-551.24	1.79	554.54	607.76			1.00	0.53	67.15
49	6480	5.57	44.44	6,416.55	561.31	614.65	-557.97	0.60	561.31	614.65			1.00	0.53	67.24
50	6575	4.24	50.12	6,511.20	566.85	620.57	-563.49	1.49	566.85	620.57			1.00	0.53	67.24
51	6670	4.15	59.37	6,605.95	570.85	626.23	-567.46	0.72	570.85	626.23			1.00	0.53	67.15
52	6764	2.34	39.02	6,699.80	574.08	630.36	-570.66	2.25	574.08	630.36			1.00	0.53	67.41
53	6860	1.28	35.45	6,795.75	576.47	632.22	-573.05	1.11	576.47	632.22			1.00	0.53	67.15
54	6956	1.77	24.12	6,891.71	578.70	633.45	-575.27	0.60	578.70	633.45			1.00	0.53	67.50
55	7051	0.88	349.69	6,986.69	580.76	633.91	-577.32	1.22	580.76	633.91			1.00	0.53	67.50
56	7146	0.18	165.05	7,081.69	581.33	633.82	-577.89	1.12	581.33	633.82			1.00	0.53	67.41
57	7183	1.64	146.98	7,118.68	580.83	634.13	-577.39	3.97	580.83	634.13			1.00	0.53	67.24
58	7193	2.30	147.91	7,128.68	580.54	634.31	-577.10	6.61	580.54	634.31			1.00	0.53	67.41
59	7242	6.32	153.77	7,177.53	577.29	636.03	-573.84	8.24	577.29	636.03			1.00	0.53	67.24
60	7289	10.69	168.13	7,224.00	570.70	638.07	-567.24	10.27	570.70	638.07			1.00	0.53	67.24
61	7336	16.44	172.01	7,269.67	559.84	639.89	-556.37	12.38	559.84	639.89			1.00	0.53	67.32
62	7431	24.13	172.01	7,358.72	527.25	644.46	-523.75	8.09	527.25	644.46			1.00	0.53	67.50
63	7525	33.10	171.53	7,441.15	482.74	650.93	-479.21	9.55	482.74	650.93			1.00	0.53	67.59
64	7621	40.04	175.49	7,518.21	425.95	657.23	-422.39	7.63	425.95	657.23			1.00	0.53	67.41
65	7716	41.94	180.25	7,589.94	363.72	659.49	-360.15	3.85	363.72	659.49			1.00	0.53	67.41
66	7811	52.76	184.22	7,654.22	294.04	656.56	-290.48	11.79	294.04	656.56			1.00	0.53	67.50
67	7905	60.98	182.50	7,705.55	215.53	652.01	-211.99	8.88	215.53	652.01			1.00	0.53	67.24
68	8000	68.49	179.77	7,746.08	129.70	650.37	-126.18	8.32	129.70	650.37			1.00	0.53	67.41
69	8095	76.71	179.50	7,774.46	39.13	650.95	-35.61	8.66	39.13	650.95			1.00	0.53	67.41
70	8137	82.15	179.81	7,782.16	-2.14	651.20	5.67	12.97	-2.14	651.20			1.00	0.53	67.41
71	8208	86.35	180.30	7,789.27	-72.77	651.13	76.29	5.96	-72.77	651.13			1.00	0.53	67.06
72	8272	88.60	180.47	7,792.09	-136.70	650.70	140.22	3.53	-136.70	650.70			1.00	0.53	67.32
73	8367	90.19	181.35	7,793.10	-231.68	649.19	235.19	1.91	-231.68	649.19			1.00	0.53	67.32
74	8462	92.09	182.50	7,791.21	-326.60	646.00	330.09	2.34	-326.60	646.00			1.00	0.53	67.41
75	8557	92.80	182.06	7,787.15	-421.44	642.23	424.91	0.88	-421.44	642.23			1.00	0.53	67.41
76	8652	91.78	180.91	7,783.36	-516.33	639.77	519.78	1.62	-516.33	639.77			1.00	0.53	67.32
77	8747	91.30	180.43	7,780.80	-611.29	638.66	614.73	0.71	-611.29	638.66			1.00	0.53	67.41
78	8842	89.22	177.78	7,780.37	-706.26	640.14	709.72	3.55	-706.26	640.14			1.00	0.53	67.59

Svy	Depth	Inc	Azm	TVD	NS	EW	VS	DLS	Northing	Easting	A/B	L/R	GTot	HTot	DipA
79	8936	89.26	177.03	7,781.62	-800.16	644.40	803.63	0.80	-800.16	644.40			1.00	0.53	67.41
80	9031	88.51	178.67	7,783.47	-895.07	647.96	898.56	1.90	-895.07	647.96			1.00	0.53	67.24
81	9127	88.42	177.83	7,786.04	-990.99	650.89	994.50	0.88	-990.99	650.89			1.00	0.53	67.32
82	9221	89.26	179.90	7,787.94	-1,084.94	652.75	1,088.46	2.38	-1,084.94	652.75			1.00	0.53	67.24
83	9317	89.79	179.72	7,788.74	-1,180.94	653.07	1,184.46	0.58	-1,180.94	653.07			1.00	0.53	67.15
84	9412	90.01	178.97	7,788.91	-1,275.93	654.15	1,279.45	0.82	-1,275.93	654.15			1.00	0.53	67.24
85	9507	90.72	178.67	7,788.30	-1,370.91	656.11	1,374.44	0.81	-1,370.91	656.11			1.00	0.53	67.41
86	9602	89.70	179.41	7,787.95	-1,465.89	657.70	1,469.43	1.33	-1,465.89	657.70			1.00	0.53	67.24
87	9697	90.23	179.59	7,788.01	-1,560.89	658.53	1,564.43	0.59	-1,560.89	658.53			1.00	0.53	67.24
88	9792	90.59	179.41	7,787.33	-1,655.88	659.36	1,659.43	0.42	-1,655.88	659.36			1.00	0.53	67.15
89	9887	89.17	180.30	7,787.53	-1,750.88	659.60	1,754.42	1.76	-1,750.88	659.60			1.00	0.52	67.41
90	9982	89.57	180.30	7,788.57	-1,845.87	659.10	1,849.41	0.42	-1,845.87	659.10			1.00	0.53	67.24
91	10077	90.32	180.34	7,788.67	-1,940.87	658.57	1,944.41	0.79	-1,940.87	658.57			1.00	0.53	67.41
92	10172	90.81	180.25	7,787.73	-2,035.86	658.08	2,039.40	0.52	-2,035.86	658.08			1.00	0.53	67.15
93	10267	89.17	180.08	7,787.75	-2,130.86	657.81	2,134.39	1.74	-2,130.86	657.81			1.00	0.53	67.15
94	10363	89.48	179.90	7,788.88	-2,226.85	657.83	2,230.38	0.37	-2,226.85	657.83			1.00	0.53	67.50
95	10457	89.44	179.24	7,789.76	-2,320.85	658.53	2,324.38	0.70	-2,320.85	658.53			1.00	0.53	67.50
96	10552	89.66	179.15	7,790.51	-2,415.83	659.87	2,419.37	0.25	-2,415.83	659.87			1.00	0.53	67.32
97	10647	90.19	179.11	7,790.63	-2,510.82	661.31	2,514.36	0.56	-2,510.82	661.31			1.00	0.53	67.15
98	10742	90.32	178.40	7,790.21	-2,605.80	663.37	2,609.35	0.76	-2,605.80	663.37			1.00	0.53	67.32
99	10838	90.85	178.71	7,789.23	-2,701.76	665.79	2,705.33	0.64	-2,701.76	665.79			1.00	0.53	67.15
100	10932	89.22	179.41	7,789.17	-2,795.75	667.34	2,799.32	1.89	-2,795.75	667.34			1.00	0.53	67.15
101	11024	89.26	178.97	7,790.39	-2,887.73	668.64	2,891.30	0.48	-2,887.73	668.64			1.00	0.53	67.15
102	11116	89.84	178.22	7,791.11	-2,979.70	670.89	2,983.28	1.03	-2,979.70	670.89			1.00	0.53	67.32
103	11208	89.62	179.94	7,791.55	-3,071.68	672.37	3,075.27	1.88	-3,071.68	672.37			1.00	0.53	67.32
104	11300	88.78	180.25	7,792.83	-3,163.67	672.22	3,167.26	0.97	-3,163.67	672.22			1.00	0.53	67.24
105	11392	89.66	180.60	7,794.09	-3,255.66	671.53	3,259.24	1.03	-3,255.66	671.53			1.00	0.53	67.24
106	11484	89.53	179.94	7,794.74	-3,347.66	671.10	3,351.24	0.73	-3,347.66	671.10			1.00	0.53	67.06
107	11576	89.53	179.72	7,795.49	-3,439.65	671.37	3,443.23	0.24	-3,439.65	671.37			1.00	0.53	67.41
108	11668	87.85	178.27	7,797.59	-3,531.61	672.99	3,535.20	2.41	-3,531.61	672.99			1.00	0.53	67.15
109	11713	90.19	178.93	7,798.36	-3,576.58	674.09	3,580.18	5.40	-3,576.58	674.09			1.00	0.53	67.15
110	11759	91.07	179.15	7,797.86	-3,622.57	674.86	3,626.17	1.97	-3,622.57	674.86			1.00	0.53	67.32
111	11851	90.54	179.41	7,796.57	-3,714.56	676.01	3,718.16	0.64	-3,714.56	676.01			1.00	0.53	67.32
112	11943	89.97	180.43	7,796.16	-3,806.56	676.14	3,810.16	1.27	-3,806.56	676.14			1.00	0.53	67.15
113	12036	90.15	180.47	7,796.06	-3,899.55	675.41	3,903.15	0.20	-3,899.55	675.41			1.00	0.53	67.41
114	12128	90.59	180.60	7,795.46	-3,991.55	674.55	3,995.14	0.50	-3,991.55	674.55			1.00	0.53	67.50
115	12220	90.81	179.85	7,794.34	-4,083.54	674.19	4,087.13	0.85	-4,083.54	674.19			1.00	0.53	67.50
116	12312	88.25	178.27	7,795.09	-4,175.51	675.70	4,179.11	3.27	-4,175.51	675.70			1.00	0.53	67.50
117	12407	88.51	179.63	7,797.78	-4,270.46	677.44	4,274.06	1.46	-4,270.46	677.44			1.00	0.53	67.41
118	12503	89.26	181.88	7,799.65	-4,366.42	676.17	4,370.02	2.47	-4,366.42	676.17			1.00	0.53	67.24
119	12598	90.37	182.37	7,799.96	-4,461.35	672.65	4,464.93	1.28	-4,461.35	672.65			1.00	0.53	67.32
120	12694	90.72	181.93	7,799.04	-4,557.28	669.05	4,560.84	0.59	-4,557.28	669.05			1.00	0.53	67.32
121	12789	91.12	180.96	7,797.52	-4,652.24	666.66	4,655.78	1.10	-4,652.24	666.66			1.00	0.53	67.41
122	12885	91.60	181.18	7,795.24	-4,748.19	664.86	4,751.72	0.55	-4,748.19	664.86			1.00	0.53	67.15
123	12981	89.40	179.99	7,794.40	-4,844.18	663.88	4,847.70	2.61	-4,844.18	663.88			1.00	0.53	67.50

Svy	Depth	Inc	Azm	TVD	NS	EW	VS	DLS	Northing	Easting	A/B	L/R	GTot	HTot	DipA
124	13076	87.76	178.05	7,796.76	-4,939.13	665.51	4,942.66	2.67	-4,939.13	665.51			1.00	0.53	67.41
125	13123	87.85	177.78	7,798.56	-4,986.06	667.22	4,989.60	0.61	-4,986.06	667.22			1.00	0.53	67.50
126	13171	88.38	179.41	7,800.13	-5,034.02	668.39	5,037.56	3.57	-5,034.02	668.39			1.00	0.53	67.32
127	13218	88.38	179.72	7,801.46	-5,081.00	668.75	5,084.54	0.66	-5,081.00	668.75			1.00	0.53	67.15
128	13266	89.84	180.25	7,802.21	-5,128.99	668.76	5,132.54	3.24	-5,128.99	668.76			1.00	0.53	67.50
129	13361	90.32	180.21	7,802.08	-5,223.99	668.38	5,227.53	0.51	-5,223.99	668.38			1.00	0.53	67.24
130	13457	90.77	180.12	7,801.16	-5,319.99	668.10	5,323.52	0.48	-5,319.99	668.10			1.00	0.53	67.32
131	13552	89.40	180.25	7,801.02	-5,414.98	667.80	5,418.52	1.45	-5,414.98	667.80			1.00	0.53	67.06
132	13648	89.17	179.68	7,802.22	-5,510.97	667.86	5,514.51	0.64	-5,510.97	667.86			1.00	0.53	67.24
133	13742	89.26	179.63	7,803.51	-5,604.96	668.42	5,608.50	0.11	-5,604.96	668.42			1.00	0.53	67.41
134	13838	90.23	179.11	7,803.93	-5,700.96	669.48	5,704.49	1.15	-5,700.96	669.48			1.00	0.53	67.24
135	13933	90.41	178.09	7,803.40	-5,795.92	671.80	5,799.47	1.09	-5,795.92	671.80			1.00	0.53	67.50
136	14029	89.26	179.33	7,803.68	-5,891.90	673.96	5,895.46	1.76	-5,891.90	673.96			1.00	0.53	67.32
137	14123	89.53	178.89	7,804.67	-5,985.88	675.42	5,989.45	0.55	-5,985.88	675.42			1.00	0.53	67.15
138	14219	90.19	178.44	7,804.91	-6,081.85	677.66	6,085.43	0.83	-6,081.85	677.66			1.00	0.53	67.15
139	14314	89.40	179.72	7,805.25	-6,176.84	679.18	6,180.42	1.58	-6,176.84	679.18			1.00	0.53	67.32
140	14410	89.70	179.19	7,806.00	-6,272.83	680.09	6,276.42	0.63	-6,272.83	680.09			1.00	0.53	67.41
141	14506	89.40	179.59	7,806.76	-6,368.82	681.12	6,372.41	0.52	-6,368.82	681.12			1.00	0.53	67.32
142	14600	89.97	178.80	7,807.27	-6,462.81	682.44	6,466.41	1.04	-6,462.81	682.44			1.00	0.53	67.50
143	14696	88.78	180.03	7,808.32	-6,558.79	683.42	6,562.40	1.78	-6,558.79	683.42			1.00	0.53	67.50
144	14790	89.44	179.99	7,809.78	-6,652.78	683.40	6,656.38	0.70	-6,652.78	683.40			1.00	0.53	67.32
145	14885	90.54	180.52	7,809.80	-6,747.78	682.98	6,751.38	1.29	-6,747.78	682.98			1.00	0.53	67.59
146	14979	89.31	180.38	7,809.92	-6,841.78	682.24	6,845.37	1.32	-6,841.78	682.24			1.00	0.53	67.59
147	15074	90.06	180.34	7,810.44	-6,936.77	681.64	6,940.36	0.79	-6,936.77	681.64			1.00	0.53	67.15
148	15169	89.97	179.33	7,810.42	-7,031.77	681.92	7,035.36	1.07	-7,031.77	681.92			1.00	0.53	67.59
149	15263	89.79	177.92	7,810.61	-7,125.74	684.17	7,129.34	1.51	-7,125.74	684.17			1.00	0.53	67.59
150	15359	88.64	179.11	7,811.93	-7,221.70	686.66	7,225.30	1.72	-7,221.70	686.66			1.00	0.53	67.15
151	15454	88.95	179.11	7,813.93	-7,316.66	688.13	7,320.28	0.33	-7,316.66	688.13			1.00	0.53	67.32
152	15548	89.04	178.80	7,815.58	-7,410.63	689.85	7,414.26	0.34	-7,410.63	689.85			1.00	0.53	67.32
153	15643	90.50	179.90	7,815.96	-7,505.62	690.93	7,509.25	1.92	-7,505.62	690.93			1.00	0.53	67.59
154	15738	90.50	178.93	7,815.13	-7,600.61	691.90	7,604.24	1.02	-7,600.61	691.90			1.00	0.53	67.59
155	15833	89.84	180.74	7,814.85	-7,695.61	692.17	7,699.24	2.03	-7,695.61	692.17			1.00	0.53	67.32
156	15928	90.54	181.13	7,814.53	-7,790.59	690.62	7,794.22	0.84	-7,790.59	690.62			1.00	0.53	67.41
157	16023	91.03	180.87	7,813.23	-7,885.57	688.96	7,889.18	0.58	-7,885.57	688.96			1.00	0.53	67.15
158	16118	90.06	181	7,812.33	-7,980.55	687.41	7,984.15	1.03	-7,980.55	687.41			1.00	0.53	67.15
159	16213	90.46	179.99	7,811.89	-8,075.54	686.59	8,079.14	1.14	-8,075.54	686.59			1.00	0.53	67.50
160	16309	88.78	179.77	7,812.53	-8,171.54	686.79	8,175.14	1.76	-8,171.54	686.79			1.00	0.53	67.41
161	16404	89.40	179.50	7,814.04	-8,266.52	687.40	8,270.12	0.71	-8,266.52	687.40			1.00	0.53	67.41
162	16499	89.88	178.62	7,814.64	-8,361.51	688.96	8,365.11	1.06	-8,361.51	688.96			1.00	0.53	67.59
163	16593	89.35	179.77	7,815.27	-8,455.50	690.28	8,459.11	1.35	-8,455.50	690.28			1.00	0.53	67.15
164	16688	90.28	179.46	7,815.58	-8,550.49	690.91	8,554.10	1.03	-8,550.49	690.91			1.00	0.53	67.24
165	16783	90.41	178.62	7,815.00	-8,645.48	692.51	8,649.10	0.89	-8,645.48	692.51			1.00	0.53	67.59
166	16879	89.13	179.90	7,815.39	-8,741.46	693.75	8,745.09	1.89	-8,741.46	693.75			1.00	0.53	67.15
167	16974	89.84	179.90	7,816.24	-8,836.46	693.91	8,840.08	0.75	-8,836.46	693.91			1.00	0.53	67.24
168	17069	89.09	180.52	7,817.13	-8,931.45	693.56	8,935.07	1.02	-8,931.45	693.56			1.00	0.53	67.41

Svy	Depth	Inc	Azm	TVD	NS	EW	VS	DLS	Northing	Easting	A/B	L/R	GTot	HTot	DipA
169	17164	89.97	180.74	7,817.91	-9,026.44	692.52	9,030.06	0.95	-9,026.44	692.52			1.00	0.53	67.59
170	17259	90.81	180.87	7,817.26	-9,121.43	691.18	9,125.04	0.89	-9,121.43	691.18			1.00	0.53	67.59
171	17354	91.47	180.47	7,815.37	-9,216.40	690.07	9,220.00	0.81	-9,216.40	690.07			1.00	0.53	67.41
172	17448	90.59	180.03	7,813.68	-9,310.39	689.66	9,313.98	1.05	-9,310.39	689.66			1.00	0.53	67.59
173	17543	88.07	178.31	7,814.79	-9,405.36	691.04	9,408.96	3.21	-9,405.36	691.04			1.00	0.53	67.59
174	17638	87.19	176.90	7,818.72	-9,500.19	695.01	9,503.81	1.75	-9,500.19	695.01			1.00	0.53	67.68
175	17734	87.94	178.49	7,822.80	-9,596.02	698.86	9,599.66	1.83	-9,596.02	698.86			1.00	0.53	67.50
176	17829	89.97	180.30	7,824.53	-9,690.99	699.86	9,694.64	2.86	-9,690.99	699.86			1.00	0.53	67.50
177	17924	89.90	180.30	7,824.64	-9,785.99	699.37	9,789.63	0.07	-9,785.99	699.37			-9999	0.53	67.50
178	18001	88.33	179.41	7,825.83	-9,862.98	699.56	9,866.62	2.34	-9,862.98	699.56			1.00	0.53	67.32
PTB	18068	88.33	179.41	7,827.78	-9,929.95	700.25	9,933.59	0	-9,929.95	700.25			0	0	0