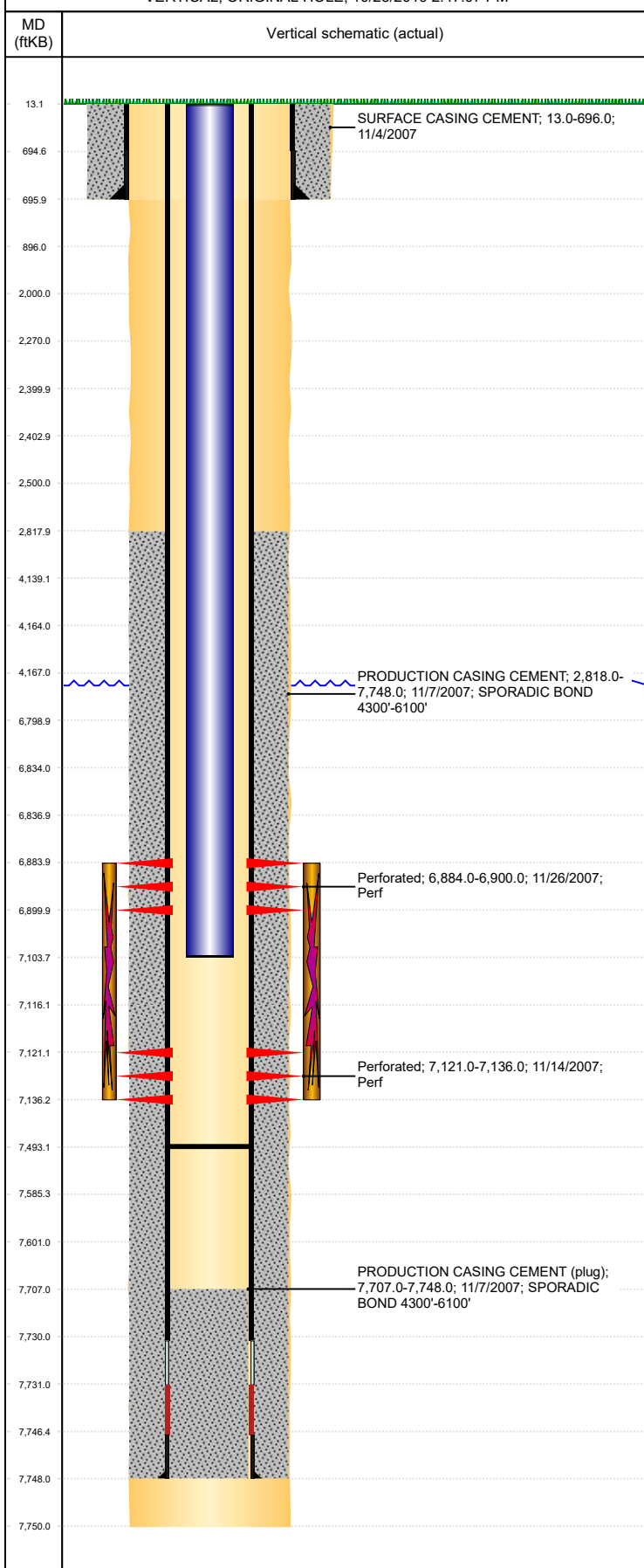


Well Name: MOSER H34-22

VERTICAL, ORIGINAL HOLE, 10/28/2019 2:47:07 PM



Well Header									
API 05-123-26519		Business Unit DJ BASIN			District 15		Well Config VERTICAL		
KB - GL / MSL (ft... 13.00		Spud Date 11/3/2007		P & A Date		Well Production Status PR		SoRT No	
Comment									
Surface Location (Congressional)									
Qtr 3 SE	Qtr 4 NE	Section 34	Twtnshp 3	Twtnsh... N	Range 65	Rng E/... W	Actual Latitude (°) 40.18205804	Actual Longitude (°) -104.64458048	
Wellbore Sections									
Section Des			Size (in)			Act Top, MD (ftKB)		Act Btm, MD (ftKB)	
SURFACE			12 1/4			13		696	
PRODUCTION			7 7/8			696		7,750	
Casing Strings									
Csg Des		Run Date		OD (in)	Wt/Len (lb/ft)	Grade	Top, MD (ftKB)	MD (ftKB)	
Surface		11/4/2007		8 5/8	24.00	J-55	13.0	696.0	
Production		11/7/2007		4 1/2	11.60	M-80	13.0	7,748.0	
Cement									
Des				Start Date		Top (ftKB)		Btm (ftKB)	
SURFACE CASING CEMENT				11/4/2007		13.0		696.0	
PRODUCTION CASING CEMENT				11/7/2007		2,818.0		7,748.0	
Zone Statuses									
Zone Name	Status Date	Status	Fluid Type	Job				Prod Method	
NIOBRARA	12/14/2007	PR		DRILLING/COMPLETION - ORIGINAL, 11/3/2007...					
CODELL	12/14/2007	PR		DRILLING/COMPLETION - ORIGINAL, 11/3/2007...					
Perforation Data									
Linked Zone		Bnch/Stg	Entered Shot Total	Top (ftKB)		Btm (ftKB)		Date	
NIOBRARA, ORIGINAL HOLE			24	6,884.00		6,900.00		11/26/2007	
CODELL, ORIGINAL HOLE			60	7,121.00		7,136.00		11/14/2007	
Stimulation Intervals									
Zone				Start Date		Top (ftKB)		Btm (ftKB)	
NIOBRARA, ORIGINAL HOLE				11/26/2007		6,884.0		7,136.0	
CODELL, ORIGINAL HOLE				11/26/2007					
Other In Hole									
Run Date		Des				OD (in)	Top (ftKB)	Btm (ftKB)	
Logs									
Date		Type				Top, MD (ftKB)		Btm, MD (ftKB)	
11/6/2007		Compensated Density				2,630.0		7,728.0	
11/6/2007		Induction				696.0		7,748.0	
11/14/2007		CBL/CCL/GR				2,720.0		7,700.0	
1/1/2014		GYRO				0.0		7,050.0	
Plug Back Total Depths									
Date		Type		Com				Depth (ftKB)	
3/12/2008		PLUG REMNANTS		CHASED PLUG TO 7268'				7,268.0	
8/27/2013		PLUG REMNANTS						7,493.0	