

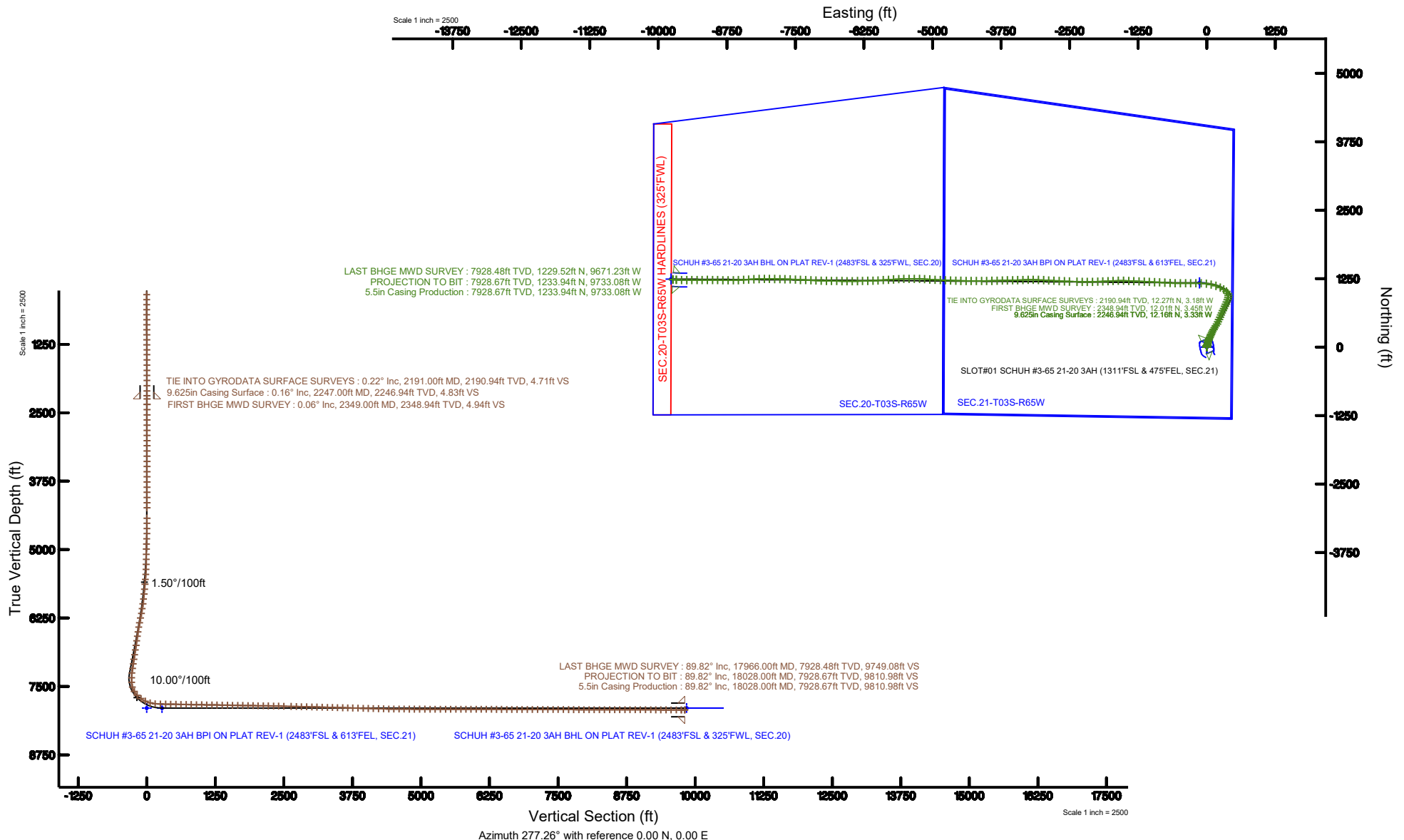
BURLINGTON RESOURCES

Location: COLORADO Slot: SLOT#01 SCHUH #3-65 21-20 3AH (1311°FSL & 475°FEL, SEC.21)
Field: ADAMS COUNTY (NAD83/TN) Well: SCHUH #3-65 21-20 3AH
Facility: SEC.21-T03S-R65W Wellbore: SCHUH #3-65 21-20 3AH PWB



BURLINGTON RESOURCES

Plot reference wellpath is SCHUH #3-65 21-20 3AH (REV-C.0) PWP	Grid System: NAD83 / Lambert Colorado SP, Northern Zone (501), US feet
True vertical depths are referenced to NABORS B16 (25KB) (RKB)	North Reference: True north
Measured depths are referenced to NABORS B16 (25KB) (RKB)	Scale: True distance
NABORS B16 (25KB) (RKB) to Mean Sea Level: 5620.8 feet	Depths are in feet
Mean Sea Level to Mud line (At Slot: SLOT#01 SCHUH #3-65 21-20 3AH (1311°FSL & 475°FEL, SEC.21)): 0 feet	Created by: komeraf on 2019-02-21
Coordinates are in feet referenced to Slot	Database: WA DENVER



BURLINGTON
RESOURCES
Actual Wellpath Report

SCHUH #3-65 21-20 3AH AWP

Page 1 of 7



REFERENCE WELLPATH IDENTIFICATION			
Operator	BURLINGTON RESOURCES	Slot	SLOT#01 SCHUH #3-65 21-20 3AH (1311'FSL & 475'FEL, SEC.21)
Area	COLORADO	Well	SCHUH #3-65 21-20 3AH
Field	ADAMS COUNTY (NAD83/TN)	Wellbore	SCHUH #3-65 21-20 3AH AWB
Facility	SEC.21-T03S-R65W		

REPORT SETUP INFORMATION			
Projection System	NAD83 / Lambert Colorado SP, Northern Zone (501), US feet	Software System	WellArchitect® 5.1
North Reference	True	User	Komeraf
Scale	0.999991	Report Generated	2/21/2019 at 5:41:07 PM
Convergence at slot	0.54° East	Database/Source file	WA DENVER/SCHUH_#3-65_21-20_3AH_AWP.xml

WELLPATH LOCATION						
	Local coordinates		Grid coordinates		Geographic coordinates	
	North[ft]	East[ft]	Easting[US ft]	Northing[US ft]	Latitude	Longitude
Slot Location	0.00	0.00	3235790.66	1161145.16	39°46'21.540"N	104°39'40.090"W
Facility Reference Pt			3235790.66	1161145.16	39°46'21.540"N	104°39'40.090"W
Field Reference Pt			3257309.99	1164230.85	39°46'49.930"N	104°35'04.090"W

WELLPATH DATUM			
Calculation method	Minimum curvature	NABORS B16 (25'KB) (RKB) to Facility Vertical Datum	5620.80ft
Horizontal Reference Pt	Slot	NABORS B16 (25'KB) (RKB) to Mean Sea Level	5620.80ft
Vertical Reference Pt	NABORS B16 (25'KB) (RKB)	NABORS B16 (25'KB) (RKB) to Mud Line at Slot (SLOT#01 SCHUH #3-65 21-20 3AH (1311'FSL & 475'FEL, SEC.21))	5620.80ft
MD Reference Pt	NABORS B16 (25'KB) (RKB)	Section Origin	N 0.00, E 0.00 ft
Field Vertical Reference	Mean Sea Level	Section Azimuth	277.26°



Actual Wellpath Report

SCHUH #3-65 21-20 3AH AWP

Page 2 of 7



REFERENCE WELLPATH IDENTIFICATION			
Operator	BURLINGTON RESOURCES	Slot	SLOT#01 SCHUH #3-65 21-20 3AH (1311'FSL & 475'FEL, SEC.21)
Area	COLORADO	Well	SCHUH #3-65 21-20 3AH
Field	ADAMS COUNTY (NAD83/TN)	Wellbore	SCHUH #3-65 21-20 3AH AWP
Facility	SEC.21-T03S-R65W		

WELLPATH DATA (167 stations)												
MD [ft]	Inclination [°]	Azimuth [°]	TVD [ft]	Vert Sect [ft]	North [ft]	East [ft]	Grid East [US ft]	Grid North [US ft]	Latitude	Longitude	DLS [°/100ft]	Comments
2191.00	0.220	232.820	2190.94	4.71	12.27	-3.18	3235787.36	1161157.40	39°46'21.661"N	104°39'40.131"W	0.03	TIE INTO GYRODATA SURFACE SURVEYS
2349.00	0.060	201.710	2348.94	4.94	12.01	-3.45	3235787.09	1161157.14	39°46'21.659"N	104°39'40.134"W	0.11	FIRST BHGE MWD SURVEY
2444.00	0.030	256.790	2443.94	4.98	11.96	-3.50	3235787.05	1161157.09	39°46'21.658"N	104°39'40.135"W	0.05	
2538.00	0.100	325.800	2537.94	5.06	12.02	-3.57	3235786.98	1161157.15	39°46'21.659"N	104°39'40.136"W	0.10	
2633.00	0.070	357.570	2632.94	5.12	12.15	-3.62	3235786.93	1161157.28	39°46'21.660"N	104°39'40.136"W	0.06	
2727.00	0.040	169.780	2726.94	5.12	12.18	-3.61	3235786.94	1161157.30	39°46'21.660"N	104°39'40.136"W	0.12	
2821.00	0.060	260.370	2820.94	5.16	12.14	-3.65	3235786.89	1161157.26	39°46'21.660"N	104°39'40.137"W	0.08	
2915.00	0.040	155.250	2914.94	5.19	12.10	-3.69	3235786.86	1161157.22	39°46'21.660"N	104°39'40.137"W	0.09	
3010.00	0.070	337.050	3009.94	5.20	12.12	-3.70	3235786.85	1161157.25	39°46'21.660"N	104°39'40.137"W	0.12	
3104.00	0.060	307.190	3103.94	5.27	12.20	-3.76	3235786.79	1161157.33	39°46'21.661"N	104°39'40.138"W	0.04	
3198.00	0.040	90.560	3197.94	5.28	12.23	-3.77	3235786.78	1161157.36	39°46'21.661"N	104°39'40.138"W	0.10	
3293.00	0.140	74.090	3292.94	5.14	12.26	-3.62	3235786.92	1161157.39	39°46'21.661"N	104°39'40.136"W	0.11	
3388.00	0.030	64.480	3387.94	5.01	12.31	-3.49	3235787.06	1161157.43	39°46'21.662"N	104°39'40.135"W	0.12	
3482.00	0.060	181.710	3481.94	4.99	12.27	-3.47	3235787.08	1161157.40	39°46'21.661"N	104°39'40.134"W	0.08	
3577.00	0.040	232.610	3576.94	5.01	12.20	-3.49	3235787.05	1161157.33	39°46'21.661"N	104°39'40.135"W	0.05	
3671.00	0.040	277.850	3670.94	5.06	12.18	-3.55	3235786.99	1161157.31	39°46'21.660"N	104°39'40.136"W	0.03	
3765.00	0.060	220.250	3764.94	5.12	12.15	-3.62	3235786.93	1161157.28	39°46'21.660"N	104°39'40.136"W	0.05	
3860.00	0.040	87.480	3859.94	5.12	12.11	-3.62	3235786.93	1161157.24	39°46'21.660"N	104°39'40.136"W	0.10	
3954.00	0.060	207.550	3953.94	5.10	12.07	-3.61	3235786.94	1161157.20	39°46'21.659"N	104°39'40.136"W	0.09	
4049.00	0.040	269.270	4048.94	5.15	12.03	-3.66	3235786.89	1161157.15	39°46'21.659"N	104°39'40.137"W	0.06	
4143.00	0.090	139.200	4142.94	5.13	11.97	-3.65	3235786.90	1161157.10	39°46'21.658"N	104°39'40.137"W	0.13	
4238.00	0.070	149.880	4237.94	5.04	11.86	-3.57	3235786.98	1161156.99	39°46'21.657"N	104°39'40.136"W	0.03	
4426.00	0.110	89.070	4425.94	4.79	11.77	-3.33	3235787.22	1161156.90	39°46'21.656"N	104°39'40.133"W	0.05	
4521.00	0.090	168.600	4520.94	4.68	11.70	-3.23	3235787.33	1161156.83	39°46'21.656"N	104°39'40.131"W	0.14	
4615.00	1.900	24.020	4614.93	4.20	13.05	-2.58	3235787.96	1161158.18	39°46'21.669"N	104°39'40.123"W	2.10	
4709.00	3.620	37.030	4708.81	2.28	16.84	-0.15	3235790.35	1161162.00	39°46'21.706"N	104°39'40.092"W	1.94	
4804.00	4.690	34.990	4803.56	-1.02	22.42	3.88	3235794.33	1161167.61	39°46'21.762"N	104°39'40.040"W	1.14	
4898.00	5.670	25.760	4897.18	-4.28	29.75	8.10	3235798.48	1161174.98	39°46'21.834"N	104°39'39.986"W	1.37	
4992.00	7.860	14.450	4990.52	-6.56	40.15	11.72	3235802.00	1161185.42	39°46'21.937"N	104°39'39.940"W	2.72	
5087.00	10.400	10.190	5084.31	-7.81	54.89	14.86	3235805.00	1161200.18	39°46'22.082"N	104°39'39.900"W	2.76	
5181.00	11.940	12.100	5176.53	-9.07	72.75	18.40	3235808.37	1161218.08	39°46'22.259"N	104°39'39.854"W	1.68	
5276.00	12.140	13.730	5269.44	-11.02	92.06	22.83	3235812.62	1161237.43	39°46'22.450"N	104°39'39.798"W	0.42	
5370.00	11.990	18.500	5361.37	-14.04	110.92	28.28	3235817.89	1161256.34	39°46'22.636"N	104°39'39.728"W	1.07	
5464.00	14.270	20.970	5452.90	-18.69	131.00	35.52	3235824.94	1161276.49	39°46'22.835"N	104°39'39.635"W	2.50	
5558.00	16.140	21.880	5543.61	-24.74	153.94	44.54	3235833.74	1161299.52	39°46'23.061"N	104°39'39.520"W	2.01	
5653.00	18.260	23.570	5634.36	-32.25	179.84	55.41	3235844.37	1161325.52	39°46'23.317"N	104°39'39.380"W	2.29	
5748.00	18.380	22.880	5724.54	-40.47	207.28	67.19	3235855.88	1161353.07	39°46'23.589"N	104°39'39.230"W	0.26	
5842.00	19.160	23.460	5813.54	-48.76	235.09	79.09	3235867.52	1161380.98	39°46'23.863"N	104°39'39.077"W	0.85	
5936.00	19.510	25.930	5902.24	-58.09	263.35	92.09	3235880.26	1161409.37	39°46'24.143"N	104°39'38.911"W	0.95	
6030.00	20.560	29.310	5990.56	-69.32	291.87	107.04	3235894.93	1161438.02	39°46'24.424"N	104°39'38.719"W	1.66	
6125.00	21.690	31.010	6079.17	-82.65	321.46	124.25	3235911.86	1161467.78	39°46'24.717"N	104°39'38.499"W	1.35	
6218.00	24.090	32.670	6164.84	-97.72	352.17	143.35	3235930.67	1161498.67	39°46'25.020"N	104°39'38.254"W	2.67	
6313.00	25.930	32.550	6250.93	-114.92	386.00	164.99	3235952.00	1161532.70	39°46'25.355"N	104°39'37.977"W	1.94	
6407.00	27.600	29.340	6334.86	-131.89	422.31	186.72	3235973.38	1161569.22	39°46'25.714"N	104°39'37.699"W	2.35	
6501.00	27.890	24.730	6418.06	-146.68	461.27	206.59	3235992.88	1161608.36	39°46'26.099"N	104°39'37.444"W	2.30	

BURLINGTON
RESOURCES

Actual Wellpath Report

SCHUH #3-65 21-20 3AH AWP

Page 3 of 7



REFERENCE WELLPATH IDENTIFICATION			
Operator	BURLINGTON RESOURCES	Slot	SLOT#01 SCHUH #3-65 21-20 3AH (1311'FSL & 475'FEL, SEC.21)
Area	COLORADO	Well	SCHUH #3-65 21-20 3AH
Field	ADAMS COUNTY (NAD83/TN)	Wellbore	SCHUH #3-65 21-20 3AH AWP
Facility	SEC.21-T03S-R65W		

WELLPATH DATA (167 stations)

MD [ft]	Inclination [°]	Azimuth [°]	TVD [ft]	Vert Sect [ft]	North [ft]	East [ft]	Grid East [US ft]	Grid North [US ft]	Latitude	Longitude	DLS [°/100ft]	Comments
6596.00	28.420	22.800	6501.82	-159.41	502.29	224.65	3236010.55	1161649.55	39°46'26.504"N	104°39'37.213"W	1.11	
6690.00	29.410	21.830	6584.10	-171.21	544.34	241.90	3236027.40	1161691.76	39°46'26.920"N	104°39'36.992"W	1.17	
6785.00	27.630	22.170	6667.57	-182.75	586.39	258.89	3236043.99	1161733.97	39°46'27.335"N	104°39'36.774"W	1.88	
6879.00	28.250	24.280	6750.62	-194.87	626.86	276.26	3236060.98	1161774.60	39°46'27.735"N	104°39'36.552"W	1.24	
6973.00	27.370	26.310	6833.76	-208.44	666.51	294.99	3236079.33	1161814.42	39°46'28.127"N	104°39'36.312"W	1.38	
7068.00	26.580	26.800	6918.43	-222.68	705.05	314.25	3236098.22	1161853.15	39°46'28.508"N	104°39'36.065"W	0.86	
7163.00	27.310	23.620	7003.12	-235.93	744.00	332.57	3236116.17	1161892.26	39°46'28.893"N	104°39'35.831"W	1.70	
7257.00	28.530	21.600	7086.18	-247.57	784.63	349.47	3236132.69	1161933.05	39°46'29.294"N	104°39'35.614"W	1.64	
7352.00	27.870	23.050	7169.90	-259.23	826.15	366.52	3236149.34	1161974.74	39°46'29.705"N	104°39'35.396"W	1.00	
7446.00	25.640	22.320	7253.83	-270.50	865.19	382.84	3236165.30	1162013.92	39°46'30.090"N	104°39'35.187"W	2.40	
7541.00	23.660	8.330	7340.24	-276.20	903.10	393.42	3236175.52	1162051.93	39°46'30.465"N	104°39'35.051"W	6.47	
7635.00	23.650	5.250	7426.35	-275.89	940.54	397.88	3236179.62	1162089.41	39°46'30.835"N	104°39'34.994"W	1.31	
7729.00	26.380	331.110	7511.96	-262.85	977.80	389.47	3236170.86	1162126.59	39°46'31.203"N	104°39'35.102"W	15.43	
7824.00	35.680	312.250	7593.47	-227.54	1015.07	358.63	3236139.67	1162163.57	39°46'31.572"N	104°39'35.497"W	14.06	
7918.00	46.970	303.730	7664.01	-174.11	1052.73	309.56	3236090.25	1162200.77	39°46'31.944"N	104°39'36.125"W	13.40	
8012.00	56.000	296.270	7722.53	-106.32	1089.16	245.86	3236026.21	1162236.59	39°46'32.304"N	104°39'36.941"W	11.43	
8107.00	65.700	287.090	7768.83	-26.11	1119.44	168.86	3235948.93	1162266.13	39°46'32.603"N	104°39'37.927"W	13.23	
8201.00	76.530	282.130	7799.22	61.95	1141.71	82.93	3235862.78	1162287.59	39°46'32.823"N	104°39'39.028"W	12.55	
8295.00	83.710	278.260	7815.35	154.35	1158.05	-8.14	3235771.56	1162303.07	39°46'32.985"N	104°39'40.194"W	8.65	
8390.00	88.860	271.260	7821.51	248.97	1165.90	-102.53	3235677.11	1162310.02	39°46'33.062"N	104°39'41.403"W	9.13	
8484.00	88.890	270.670	7823.35	342.39	1167.48	-196.50	3235583.13	1162310.72	39°46'33.078"N	104°39'42.607"W	0.63	
8579.00	89.080	270.450	7825.04	436.72	1168.41	-291.48	3235488.15	1162310.75	39°46'33.087"N	104°39'43.823"W	0.31	
8673.00	88.920	269.590	7826.68	529.96	1168.44	-385.46	3235394.17	1162309.89	39°46'33.087"N	104°39'45.027"W	0.93	
8768.00	88.980	268.700	7828.42	623.99	1167.02	-480.43	3235299.21	1162307.57	39°46'33.073"N	104°39'46.243"W	0.94	
8862.00	89.080	271.400	7830.01	717.23	1167.10	-574.41	3235205.24	1162306.77	39°46'33.074"N	104°39'47.447"W	2.87	
8956.00	89.080	272.950	7831.52	810.84	1170.67	-668.33	3235111.30	1162309.44	39°46'33.109"N	104°39'48.650"W	1.65	
9051.00	89.080	274.610	7833.04	905.65	1176.93	-763.11	3235016.46	1162314.81	39°46'33.171"N	104°39'49.864"W	1.75	
9146.00	88.980	272.200	7834.65	1000.42	1182.57	-857.92	3234921.60	1162319.55	39°46'33.227"N	104°39'51.078"W	2.54	
9240.00	89.110	272.400	7836.22	1094.05	1186.35	-951.83	3234827.66	1162322.44	39°46'33.264"N	104°39'52.281"W	0.25	
9334.00	89.050	273.370	7837.73	1187.77	1191.08	-1045.70	3234733.75	1162326.28	39°46'33.311"N	104°39'53.483"W	1.03	
9428.00	89.020	273.070	7839.31	1281.52	1196.36	-1139.54	3234639.87	1162330.67	39°46'33.363"N	104°39'54.685"W	0.32	
9522.00	88.890	272.940	7841.03	1375.25	1201.28	-1233.39	3234545.98	1162334.71	39°46'33.412"N	104°39'55.887"W	0.20	
9617.00	89.020	272.510	7842.76	1469.93	1205.80	-1328.27	3234451.06	1162338.33	39°46'33.456"N	104°39'57.102"W	0.47	
9711.00	88.920	271.840	7844.45	1563.55	1209.36	-1422.18	3234357.12	1162341.01	39°46'33.491"N	104°39'58.305"W	0.72	
9806.00	88.830	270.730	7846.31	1658.01	1211.49	-1517.14	3234262.15	1162342.24	39°46'33.512"N	104°39'59.521"W	1.17	
9900.00	88.980	269.240	7848.11	1751.24	1211.47	-1611.12	3234168.17	1162341.32	39°46'33.512"N	104°40'00.725"W	1.59	
9995.00	89.140	266.730	7849.67	1844.98	1208.13	-1706.04	3234073.29	1162337.09	39°46'33.479"N	104°40'01.941"W	2.65	
10089.00	88.860	267.220	7851.31	1937.45	1203.17	-1799.90	3233979.48	1162331.24	39°46'33.430"N	104°40'03.143"W	0.60	
10184.00	89.080	268.190	7853.02	2031.12	1199.37	-1894.80	3233884.62	1162326.54	39°46'33.392"N	104°40'04.358"W	1.05	
10278.00	89.080	268.040	7854.53	2123.91	1196.28	-1988.74	3233790.72	1162322.56	39°46'33.362"N	104°40'05.562"W	0.16	
10373.00	88.920	268.520	7856.18	2217.73	1193.42	-2083.68	3233695.81	1162318.81	39°46'33.333"N	104°40'06.778"W	0.53	
10467.00	89.170	269.850	7857.75	2310.79	1192.09	-2177.66	3233601.85	1162316.58	39°46'33.320"N	104°40'07.981"W	1.44	
10561.00	89.170	270.510	7859.11	2404.06	1192.38	-2271.65	3233507.86	1162315.99	39°46'33.323"N	104°40'09.185"W	0.70	
10656.00	88.430	271.950	7861.10	2498.51	1194.42	-2366.60	3233412.89	1162317.13	39°46'33.343"N	104°40'10.401"W	1.70	
10792.00	88.430	271.650	7864.83	2633.85	1198.69	-2502.48	3233276.98	1162320.11	39°46'33.385"N	104°40'12.141"W	0.22	



Actual Wellpath Report

SCHUH #3-65 21-20 3AH AWP

Page 4 of 7



REFERENCE WELLPATH IDENTIFICATION			
Operator	BURLINGTON RESOURCES	Slot	SLOT#01 SCHUH #3-65 21-20 3AH (1311'FSL & 475'FEL, SEC.21)
Area	COLORADO	Well	SCHUH #3-65 21-20 3AH
Field	ADAMS COUNTY (NAD83/TN)	Wellbore	SCHUH #3-65 21-20 3AH AWP
Facility	SEC.21-T03S-R65W		

WELLPATH DATA (167 stations)

MD [ft]	Inclination [°]	Azimuth [°]	TVD [ft]	Vert Sect [ft]	North [ft]	East [ft]	Grid East [US ft]	Grid North [US ft]	Latitude	Longitude	DLS [°/100ft]	Comments
10886.00	88.430	272.430	7867.40	2727.42	1202.04	-2596.39	3233183.05	1162322.57	39°46'33.418"N	104°40'13.344"W	0.83	
10981.00	88.620	273.030	7869.85	2822.09	1206.56	-2691.25	3233088.15	1162326.20	39°46'33.463"N	104°40'14.559"W	0.66	
11075.00	88.650	273.410	7872.09	2915.83	1211.84	-2785.07	3232994.28	1162330.59	39°46'33.515"N	104°40'15.761"W	0.41	
11170.00	88.460	273.290	7874.48	3010.58	1217.39	-2879.88	3232899.43	1162335.24	39°46'33.569"N	104°40'16.975"W	0.24	
11264.00	88.490	273.300	7876.99	3104.32	1222.79	-2973.69	3232805.57	1162339.75	39°46'33.623"N	104°40'18.177"W	0.03	
11358.00	88.550	271.860	7879.41	3197.98	1227.02	-3067.56	3232711.66	1162343.09	39°46'33.664"N	104°40'19.379"W	1.53	
11453.00	88.430	270.710	7881.92	3292.43	1229.15	-3162.50	3232616.71	1162344.33	39°46'33.685"N	104°40'20.595"W	1.22	
11547.00	88.520	269.550	7884.42	3385.67	1229.36	-3256.47	3232522.74	1162343.65	39°46'33.687"N	104°40'21.799"W	1.24	
11641.00	88.340	267.410	7886.99	3478.53	1226.87	-3350.39	3232428.85	1162340.27	39°46'33.663"N	104°40'23.001"W	2.28	
11736.00	88.490	267.580	7889.62	3572.11	1222.72	-3445.27	3232334.02	1162335.22	39°46'33.621"N	104°40'24.217"W	0.24	
11830.00	88.580	269.370	7892.03	3664.98	1220.22	-3539.20	3232240.12	1162331.83	39°46'33.597"N	104°40'25.420"W	1.91	
11924.00	88.580	268.860	7894.36	3758.00	1218.77	-3633.16	3232146.17	1162329.49	39°46'33.582"N	104°40'26.623"W	0.54	
12019.00	88.460	268.610	7896.81	3851.92	1216.67	-3728.10	3232051.25	1162326.50	39°46'33.561"N	104°40'27.839"W	0.29	
12114.00	88.580	268.060	7899.26	3945.74	1213.91	-3823.03	3231956.36	1162322.84	39°46'33.534"N	104°40'29.055"W	0.59	
12208.00	88.550	268.660	7901.62	4038.58	1211.22	-3916.96	3231862.46	1162319.26	39°46'33.507"N	104°40'30.258"W	0.64	
12303.00	88.460	268.620	7904.10	4132.48	1208.97	-4011.90	3231767.54	1162316.11	39°46'33.485"N	104°40'31.474"W	0.10	
12397.00	88.400	271.520	7906.67	4225.69	1209.08	-4105.86	3231673.59	1162315.34	39°46'33.486"N	104°40'32.677"W	3.08	
12491.00	88.520	269.160	7909.20	4318.97	1209.64	-4199.82	3231579.63	1162315.00	39°46'33.491"N	104°40'33.881"W	2.51	
12586.00	88.800	270.270	7911.42	4413.12	1209.17	-4294.79	3231484.67	1162313.63	39°46'33.486"N	104°40'35.097"W	1.20	
12680.00	89.320	270.140	7912.96	4506.40	1209.50	-4388.77	3231390.69	1162313.08	39°46'33.489"N	104°40'36.301"W	0.57	
12774.00	89.750	271.500	7913.72	4599.80	1210.85	-4482.76	3231296.70	1162313.54	39°46'33.502"N	104°40'37.505"W	1.52	
12868.00	89.850	271.800	7914.05	4693.35	1213.56	-4576.72	3231202.72	1162315.35	39°46'33.529"N	104°40'38.708"W	0.34	
12963.00	89.750	271.770	7914.38	4787.91	1216.51	-4671.67	3231107.74	1162317.42	39°46'33.558"N	104°40'39.924"W	0.11	
13057.00	89.850	272.440	7914.71	4881.53	1219.97	-4765.61	3231013.78	1162319.98	39°46'33.592"N	104°40'41.127"W	0.72	
13151.00	89.880	272.910	7914.93	4975.23	1224.35	-4859.51	3230919.84	1162323.48	39°46'33.635"N	104°40'42.330"W	0.50	
13246.00	89.780	273.330	7915.22	5069.98	1229.52	-4954.36	3230824.94	1162327.75	39°46'33.686"N	104°40'43.545"W	0.45	
13341.00	89.970	273.900	7915.42	5164.79	1235.51	-5049.17	3230730.08	1162332.84	39°46'33.745"N	104°40'44.759"W	0.63	
13436.00	89.910	273.350	7915.52	5259.60	1241.52	-5143.98	3230635.22	1162337.95	39°46'33.804"N	104°40'45.974"W	0.58	
13530.00	90.000	271.770	7915.60	5353.28	1245.72	-5237.89	3230541.28	1162341.26	39°46'33.846"N	104°40'47.176"W	1.68	
13625.00	89.720	270.480	7915.83	5447.74	1247.58	-5332.87	3230446.29	1162342.23	39°46'33.864"N	104°40'48.393"W	1.39	
13719.00	89.850	269.090	7916.18	5540.94	1247.23	-5426.86	3230352.30	1162340.99	39°46'33.860"N	104°40'49.597"W	1.49	
13814.00	90.060	268.080	7916.26	5634.85	1244.89	-5521.83	3230257.36	1162337.74	39°46'33.837"N	104°40'50.813"W	1.09	
13908.00	89.910	266.990	7916.28	5727.50	1240.84	-5615.74	3230163.49	1162332.81	39°46'33.797"N	104°40'52.016"W	1.17	
14002.00	89.850	266.620	7916.48	5819.94	1235.60	-5709.60	3230069.69	1162326.69	39°46'33.745"N	104°40'53.218"W	0.40	
14096.00	89.850	266.690	7916.72	5912.33	1230.12	-5803.44	3229975.91	1162320.31	39°46'33.690"N	104°40'54.420"W	0.07	
14191.00	89.820	266.200	7917.00	6005.65	1224.23	-5898.25	3229881.15	1162313.53	39°46'33.632"N	104°40'55.634"W	0.52	
14286.00	89.660	266.830	7917.43	6098.98	1218.45	-5993.08	3229786.39	1162306.85	39°46'33.575"N	104°40'56.849"W	0.68	
14380.00	89.820	267.620	7917.85	6191.54	1213.90	-6086.96	3229692.55	1162301.42	39°46'33.529"N	104°40'58.051"W	0.86	
14474.00	89.820	268.340	7918.15	6284.31	1210.59	-6180.90	3229598.65	1162297.21	39°46'33.496"N	104°40'59.254"W	0.77	
14568.00	89.820	268.400	7918.45	6377.18	1207.92	-6274.87	3229504.72	1162293.65	39°46'33.470"N	104°41'00.458"W	0.06	
14662.00	89.660	269.650	7918.87	6470.21	1206.32	-6368.85	3229410.75	1162291.16	39°46'33.454"N	104°41'01.661"W	1.34	
14757.00	89.630	269.970	7919.46	6564.41	1206.00	-6463.85	3229315.76	1162289.95	39°46'33.450"N	104°41'02.878"W	0.34	
14851.00	89.940	269.810	7919.81	6657.63	1205.82	-6557.85	3229221.77	1162288.88	39°46'33.448"N	104°41'04.082"W	0.37	
14945.00	90.030	270.570	7919.84	6750.92	1206.13	-6651.84	3229127.78	1162288.30	39°46'33.451"N	104°41'05.286"W	0.81	
15039.00	90.030	271.030	7919.79	6844.32	1207.45	-6745.84	3229033.78	1162288.73	39°46'33.464"N	104°41'06.490"W	0.49	



Actual Wellpath Report

SCHUH #3-65 21-20 3AH AWP

Page 5 of 7



REFERENCE WELLPATH IDENTIFICATION			
Operator	BURLINGTON RESOURCES	Slot	SLOT#01 SCHUH #3-65 21-20 3AH (1311'FSL & 475'FEL, SEC.21)
Area	COLORADO	Well	SCHUH #3-65 21-20 3AH
Field	ADAMS COUNTY (NAD83/TN)	Wellbore	SCHUH #3-65 21-20 3AH AWP
Facility	SEC.21-T03S-R65W		

WELLPATH DATA (167 stations)

MD [ft]	Inclination [°]	Azimuth [°]	TVD [ft]	Vert Sect [ft]	North [ft]	East [ft]	Grid East [US ft]	Grid North [US ft]	Latitude	Longitude	DLS [°/100ft]	Comments
15134.00	89.780	270.870	7919.95	6938.74	1209.02	-6840.82	3228938.78	1162289.40	39°46'33.479"N	104°41'07.706"W	0.31	
15228.00	89.850	271.310	7920.25	7032.20	1210.81	-6934.80	3228844.79	1162290.30	39°46'33.497"N	104°41'08.910"W	0.47	
15323.00	89.690	272.240	7920.63	7126.76	1213.75	-7029.76	3228749.81	1162292.35	39°46'33.525"N	104°41'10.126"W	0.99	
15417.00	89.750	272.360	7921.09	7220.41	1217.52	-7123.68	3228655.86	1162295.23	39°46'33.562"N	104°41'11.329"W	0.14	
15511.00	89.910	271.860	7921.37	7314.03	1220.98	-7217.62	3228561.90	1162297.80	39°46'33.596"N	104°41'12.532"W	0.56	
15606.00	89.780	271.820	7921.63	7408.61	1224.03	-7312.57	3228466.92	1162299.95	39°46'33.626"N	104°41'13.749"W	0.14	
15700.00	89.940	272.480	7921.86	7502.23	1227.56	-7406.50	3228372.96	1162302.59	39°46'33.661"N	104°41'14.952"W	0.72	
15795.00	89.630	273.200	7922.21	7596.95	1232.27	-7501.38	3228278.04	1162306.40	39°46'33.707"N	104°41'16.167"W	0.83	
15889.00	89.910	272.490	7922.59	7690.67	1236.93	-7595.26	3228184.12	1162310.18	39°46'33.753"N	104°41'17.369"W	0.81	
15983.00	89.690	271.840	7922.92	7784.30	1240.48	-7689.20	3228090.16	1162312.84	39°46'33.788"N	104°41'18.572"W	0.73	
16078.00	89.780	271.100	7923.36	7878.81	1242.92	-7784.16	3227995.17	1162314.38	39°46'33.811"N	104°41'19.789"W	0.78	
16172.00	89.940	271.070	7923.59	7972.27	1244.70	-7878.15	3227901.18	1162315.27	39°46'33.829"N	104°41'20.993"W	0.17	
16267.00	89.910	270.670	7923.71	8066.68	1246.14	-7973.13	3227806.18	1162315.81	39°46'33.843"N	104°41'22.209"W	0.42	
16361.00	89.970	269.640	7923.81	8159.95	1246.40	-8067.13	3227712.18	1162315.18	39°46'33.845"N	104°41'23.413"W	1.10	
16456.00	89.910	268.150	7923.91	8253.94	1244.57	-8162.11	3227617.23	1162312.45	39°46'33.826"N	104°41'24.630"W	1.57	
16550.00	89.750	266.960	7924.19	8346.60	1240.56	-8256.02	3227523.36	1162307.55	39°46'33.787"N	104°41'25.832"W	1.28	
16645.00	89.850	266.210	7924.52	8439.95	1234.90	-8350.85	3227428.59	1162300.99	39°46'33.730"N	104°41'27.047"W	0.80	
16739.00	89.820	266.250	7924.79	8532.22	1228.72	-8444.65	3227334.85	1162293.93	39°46'33.669"N	104°41'28.248"W	0.05	
16833.00	89.970	267.560	7924.96	8624.68	1223.64	-8538.51	3227241.05	1162287.96	39°46'33.618"N	104°41'29.450"W	1.40	
16928.00	89.750	268.800	7925.19	8718.49	1220.62	-8633.46	3227146.13	1162284.05	39°46'33.588"N	104°41'30.666"W	1.33	
17023.00	89.780	271.090	7925.58	8812.71	1220.53	-8728.45	3227051.14	1162283.06	39°46'33.587"N	104°41'31.883"W	2.41	
17117.00	89.940	271.530	7925.81	8906.21	1222.68	-8822.43	3226957.15	1162284.32	39°46'33.608"N	104°41'33.087"W	0.50	
17212.00	90.000	271.290	7925.86	9000.71	1225.02	-8917.40	3226862.17	1162285.76	39°46'33.631"N	104°41'34.303"W	0.26	
17306.00	89.820	270.390	7926.01	9094.12	1226.40	-9011.39	3226768.17	1162286.25	39°46'33.644"N	104°41'35.507"W	0.98	
17401.00	89.880	270.460	7926.26	9188.45	1227.10	-9106.39	3226673.17	1162286.05	39°46'33.651"N	104°41'36.724"W	0.10	
17495.00	89.600	268.950	7926.69	9281.63	1226.62	-9200.38	3226579.19	1162284.68	39°46'33.646"N	104°41'37.927"W	1.63	
17589.00	89.720	269.690	7927.24	9374.73	1225.50	-9294.37	3226485.21	1162282.67	39°46'33.634"N	104°41'39.131"W	0.80	
17683.00	89.780	269.140	7927.65	9467.84	1224.54	-9388.37	3226391.23	1162280.83	39°46'33.624"N	104°41'40.335"W	0.59	
17777.00	89.880	269.990	7927.93	9561.00	1223.83	-9482.36	3226297.25	1162279.22	39°46'33.617"N	104°41'41.539"W	0.91	
17872.00	89.820	271.420	7928.18	9655.37	1225.00	-9577.35	3226202.25	1162279.49	39°46'33.628"N	104°41'42.756"W	1.51	
17966.00	89.820	274.090	7928.48	9749.08	1229.52	-9671.23	3226108.33	1162283.12	39°46'33.672"N	104°41'43.958"W	2.84	LAST BHGE MWD SURVEY
18028.00	89.820	274.090	7928.67	9810.98	1233.94	-9733.08	3226046.45	1162286.96	39°46'33.716"N	104°41'44.750"W	0.00	PROJECTION TO BIT

HOLE & CASING SECTIONS - Ref Wellbore: SCHUH #3-65 21-20 3AH AWP Ref Wellpath: SCHUH #3-65 21-20 3AH AWP									
String/Diameter	Start MD [ft]	End MD [ft]	Interval [ft]	Start TVD [ft]	End TVD [ft]	Start N/S [ft]	Start E/W [ft]	End N/S [ft]	End E/W [ft]
9.625in Casing Surface	25.00	2247.00	2222.00	25.00	2246.94	0.00	0.00	12.16	-3.33
8.75in Open Hole	2247.00	18028.00	15781.00	2246.94	7928.67	12.16	-3.33	1233.94	-9733.08
5.5in Casing Production	25.00	18028.00	18003.00	25.00	7928.67	0.00	0.00	1233.94	-9733.08



Actual Wellpath Report

SCHUH #3-65 21-20 3AH AWP

Page 6 of 7



REFERENCE WELLPATH IDENTIFICATION			
Operator	BURLINGTON RESOURCES	Slot	SLOT#01 SCHUH #3-65 21-20 3AH (1311'FSL & 475'FEL, SEC.21)
Area	COLORADO	Well	SCHUH #3-65 21-20 3AH
Field	ADAMS COUNTY (NAD83/TN)	Wellbore	SCHUH #3-65 21-20 3AH AWB
Facility	SEC.21-T03S-R65W		

TARGETS								
Name	TVD [ft]	North [ft]	East [ft]	Grid East [US ft]	Grid North [US ft]	Latitude	Longitude	Shape
SEC.20-T03S-R65W	0.00	0.00	0.00	3235790.66	1161145.16	39°46'21.540"N	104°39'40.090"W	polygon
SEC.21-T03S-R65W	0.00	0.00	0.00	3235790.66	1161145.16	39°46'21.540"N	104°39'40.090"W	polygon
SEC.20-T03S-R65W HARDLINES (325'FWL)	7895.00	0.00	0.00	3235790.66	1161145.16	39°46'21.540"N	104°39'40.090"W	polygon
SCHUH #3-65 21-20 3AH BHL ON PLAT REV-1 (2483'FSL & 325'FWL, SEC.20)	7895.00	1243.48	-9765.85	3226013.59	1162296.19	39°46'33.810"N	104°41'45.170"W	point
SCHUH #3-65 21-20 3AH BPI ON PLAT REV-1 (2483'FSL & 613'FEL, SEC.21)	7895.00	1173.77	-129.61	3235649.96	1162317.64	39°46'33.140"N	104°39'41.750"W	point

WELLPATH COMPOSITION - Ref Wellbore: SCHUH #3-65 21-20 3AH AWB Ref Wellpath: SCHUH #3-65 21-20 3AH AWP				
Start MD [ft]	End MD [ft]	Positional Uncertainty Model	Log Name/Comment	Wellbore
25.00	2191.00	Gyrodata standard - Drop gyro or Multi-shot	GYRODATA SURFACE SURVEYS <0 - 2191>	SCHUH #3-65 21-20 3AH AWB
2191.00	17966.00	BHI AutoTrak Curve (IFR1, Short)	BHGE AUTOTRAK CURVE (IFR1, SHORT) <2191 - 17966>	SCHUH #3-65 21-20 3AH AWB
17966.00	18028.00	Blind Drilling (std)	Projection to bit	SCHUH #3-65 21-20 3AH AWB

**Actual Wellpath Report**

SCHUH #3-65 21-20 3AH AWP

Page 7 of 7



REFERENCE WELLPATH IDENTIFICATION			
Operator	BURLINGTON RESOURCES	Slot	SLOT#01 SCHUH #3-65 21-20 3AH (1311'FSL & 475'FEL, SEC.21)
Area	COLORADO	Well	SCHUH #3-65 21-20 3AH
Field	ADAMS COUNTY (NAD83/TN)	Wellbore	SCHUH #3-65 21-20 3AH AWB
Facility	SEC.21-T03S-R65W		

WELLPATH COMMENTS				
MD [ft]	Inclination [°]	Azimuth [°]	TVD [ft]	Comment
2191.00	0.220	232.820	2190.94	TIE INTO GYRODATA SURFACE SURVEYS
2349.00	0.060	201.710	2348.94	FIRST BHGE MWD SURVEY
17966.00	89.820	274.090	7928.48	LAST BHGE MWD SURVEY
18028.00	89.820	274.090	7928.67	PROJECTION TO BIT