

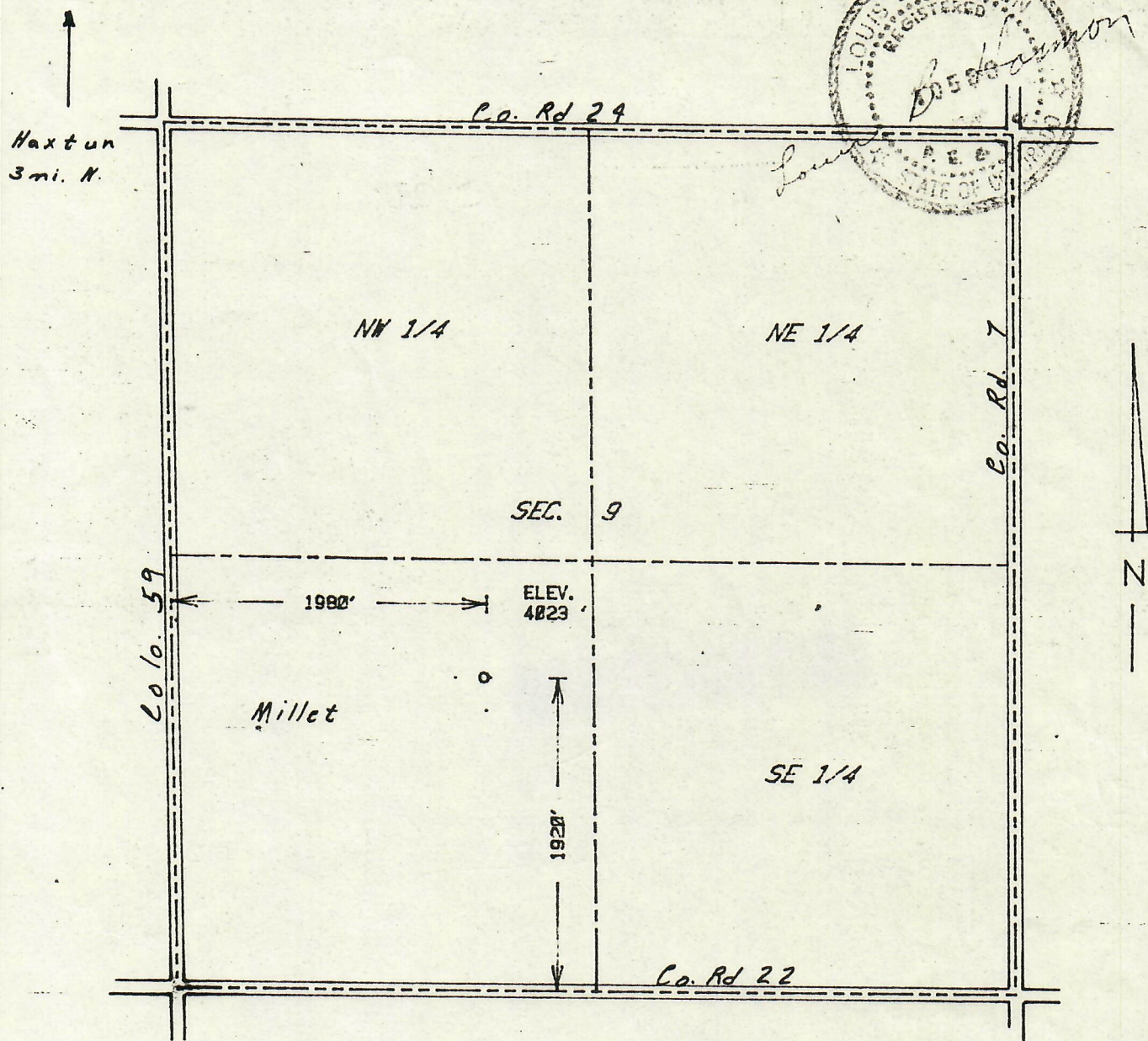
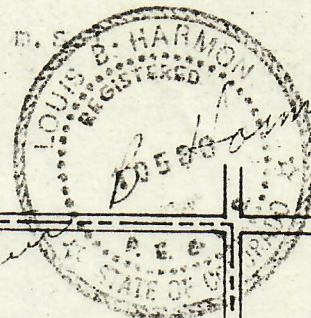


00202710

RECEIVED
JUN 26 1985
JUN 28 1985

COLO. OIL & GAS CONS. COMM.
COLD. OIL & GAS CONS. COMM.

The accompanying plat is an accurate representation of the location of a proposed well. This location may be as a point 1920 feet north of the south line, and 1980 feet east of the west line of Section 9, Township 7 N Range 47 W of the 6th P.M., PHILLIPS County, COLORADO. The surface elevation at this point is 4023 feet m.s.



SCALE - 1"=1000'

- SURVEYED POINT
- REFERENCE STAKE (200 'S, 200 'W)
- SW 1/4 SEC. 9 , T 7 N , R 47 W

HARMON
ENGINEERING
SERVICES

FUESZ FARMS #1-9

~~FUESZ FARMS~~ Frenchman Creek, Inc

PHILLIPS CO., COLORADO 20 JUNE 1985