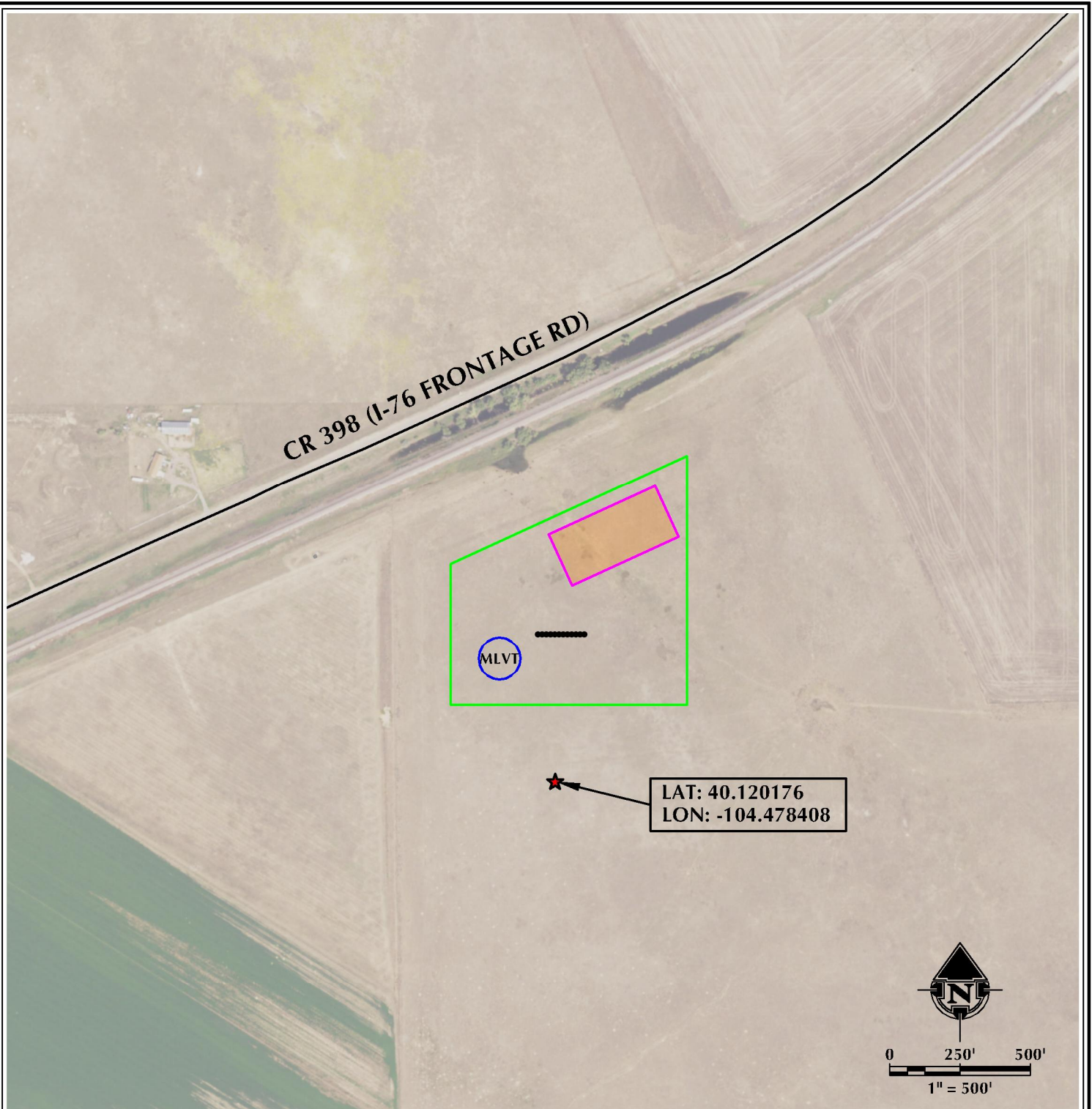


K:\VERDAD\2017_193_EMS_T2N_R63W_SEC_19\DWG\KBL SEC 19_SRS.dwg, 7/3/2019 12:33:45 PM, Hayden



LEGEND

- ★ REFERENCE AREA
- PROPOSED WELL
- PUBLIC ROAD
- ▭ DISTURBANCE AREA
- ▭ PROPOSED FACILITY

PAD - KBL 02N-63W-19

REFERENCE AREA MAP
KBL 1918-01H, KBL 1918-02H, KBL 1918-03H,
KBL 1918-04H, KBL 1918-05H, KBL 1918-06H,
KBL 1930-07H, KBL 1930-08H, KBL 1930-09H,
KBL 1930-10H, KBL 1930-11H & KBL 1930-12H
LOCATED IN SECTION 19
T2N, R63W, 6TH P.M.
WELD COUNTY, COLORADO



5950 Cedar Springs Road, Suite 200
Dallas, Texas 75235



CONSULTING, LLC

SHERIDAN OFFICE
1095 Saberton Avenue
Sheridan, Wyoming 82801
Phone 307-674-0609

LOVELAND OFFICE
6706 North Franklin Avenue
Loveland, Colorado 80538
Phone 970-776-4331

SCALE:	1" = 500ft	NAD83 CO-Nft
DRAWN:	HJL	DATE: 7/3/19
REVISED:		DATE: