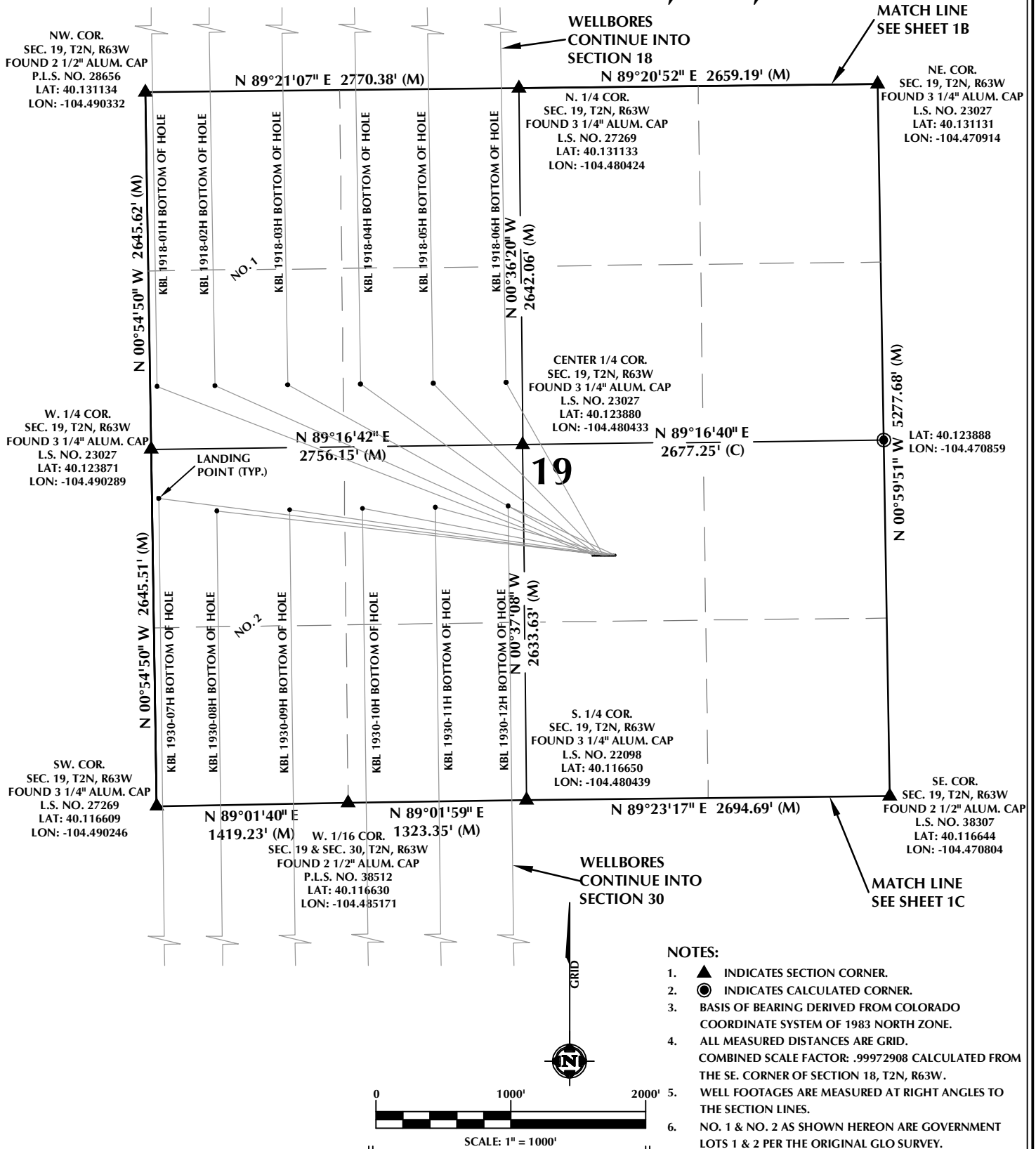


# MULTI-WELL PLAN SECTION 19, T2N, R63W



## WELL PAD - KBL 02N-63W-19

### MULTI-WELL PLAN

KBL 1918-01H, KBL 1918-02H, KBL 1918-03H,  
KBL 1918-04H, KBL 1918-05H, KBL 1918-06H,  
KBL 1930-07H, KBL 1930-08H, KBL 1930-09H,  
KBL 1930-10H, KBL 1930-11H & KBL 1930-12H  
LOCATED IN SECTIONS 18, 19 & 30  
T2N, R63W, 6TH P.M.  
WELD COUNTY, COLORADO



5950 Cedar Springs Road, Suite 200  
Dallas, Texas 75235



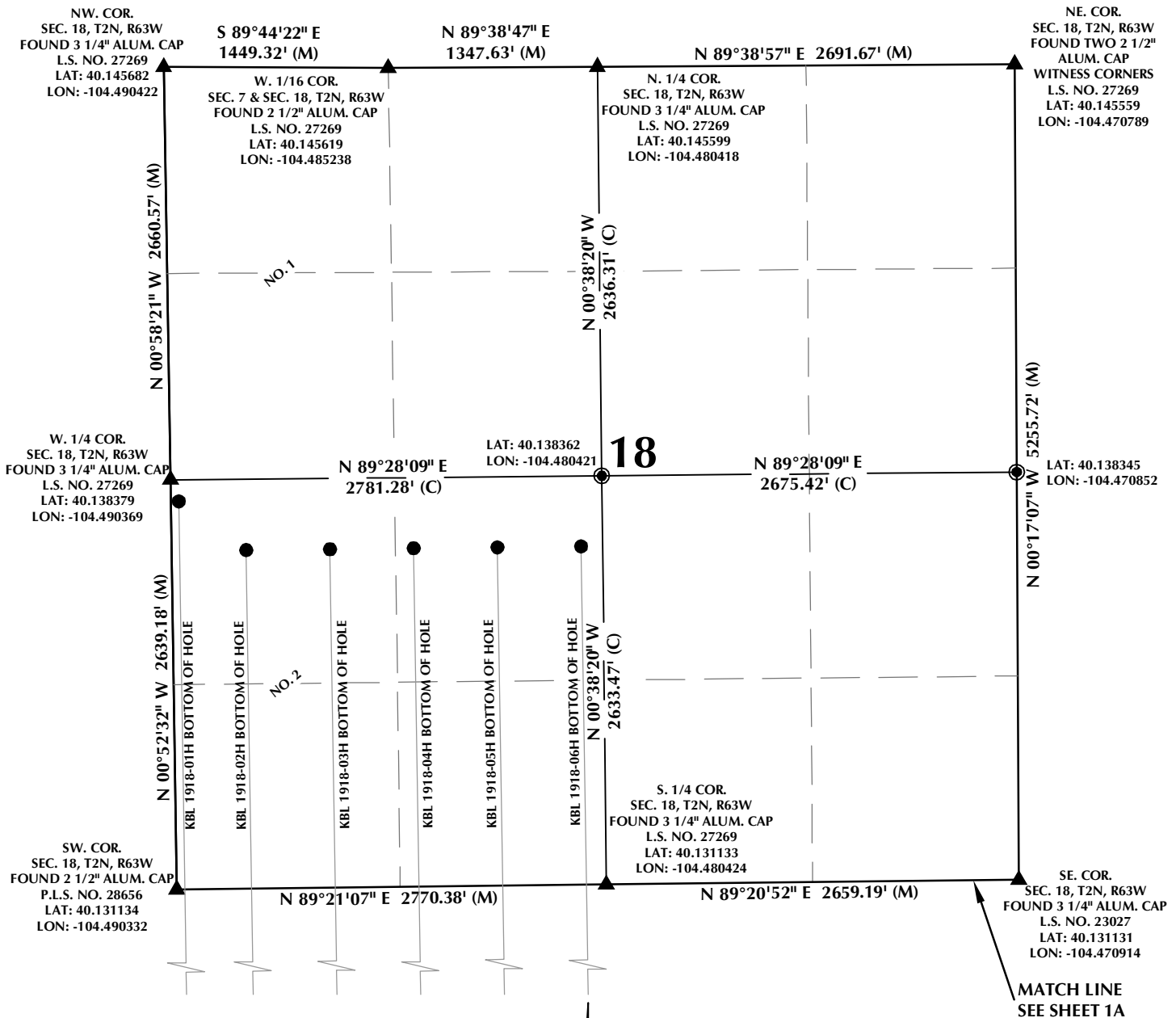
## CONSULTING, LLC

**SHERIDAN OFFICE**  
1095 Saberton Avenue  
Sheridan, Wyoming 82801  
Phone 307-674-0609

**LOVELAND OFFICE**  
6706 North Franklin Avenue  
Loveland, Colorado 80538  
Phone 970-776-4331

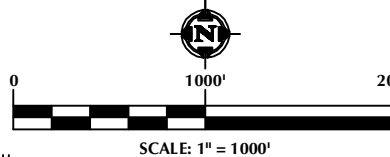
DRAFTED BY:	LMO	CHECKED BY:	RKF	SHEET NO:
DATE DRAFTED:	6/25/19	DATE SURVEYED:	6/19/19	1A
REVISED:		FILE NAME:	17-193	1A OF 2

# MULTI-WELL PLAN SECTION 18, T2N, R63W



## NOTES:

1. INDICATES SECTION CORNER.
2. INDICATES CALCULATED CORNER.
3. BASIS OF BEARING DERIVED FROM COLORADO COORDINATE SYSTEM OF 1983 NORTH ZONE.
4. ALL MEASURED DISTANCES ARE GRID.
5. COMBINED SCALE FACTOR: .99972908 CALCULATED FROM THE SE. CORNER OF SECTION 18, T2N, R63W.
6. WELL FOOTAGES ARE MEASURED AT RIGHT ANGLES TO THE SECTION LINES.
7. NO. 1 & NO. 2 AS SHOWN HEREON ARE GOVERNMENT LOTS 1 & 2 PER THE ORIGINAL GLO SURVEY.



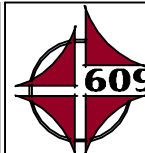
## WELL PAD - KBL 02N-63W-19

### MULTI-WELL PLAN

KBL 1918-01H, KBL 1918-02H, KBL 1918-03H,  
KBL 1918-04H, KBL 1918-05H, KBL 1918-06H,  
KBL 1930-07H, KBL 1930-08H, KBL 1930-09H,  
KBL 1930-10H, KBL 1930-11H & KBL 1930-12H  
LOCATED IN SECTIONS 18, 19 & 30  
T2N, R63W, 6TH P.M.  
WELD COUNTY, COLORADO



5950 Cedar Springs Road, Suite 200  
Dallas, Texas 75235



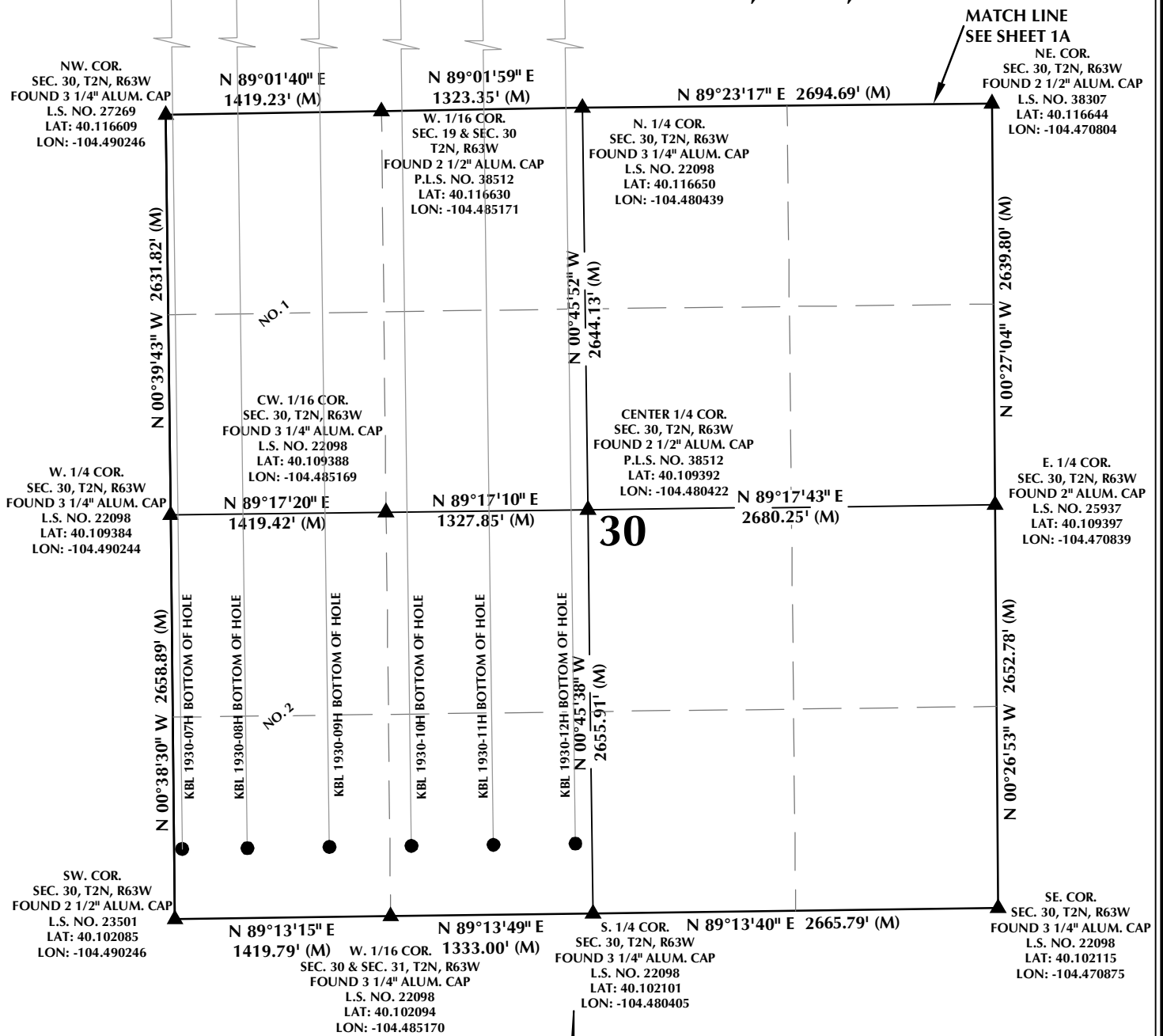
## CONSULTING, LLC

**SHERIDAN OFFICE**  
1095 Saberton Avenue  
Sheridan, Wyoming 82801  
Phone 307-674-0609

**LOVELAND OFFICE**  
6706 North Franklin Avenue  
Loveland, Colorado 80538  
Phone 970-776-4331

DRAFTED BY:	LMO	CHECKED BY:	RKF	SHEET NO:
DATE DRAFTED:	6/25/19	DATE SURVEYED:	6/19/19	<b>1B</b>
REVISED:		FILE NAME:	17-193	1B OF 2

# MULTI-WELL PLAN SECTION 30, T2N, R63W



## NOTES:

- ▲ INDICATES SECTION CORNER.
- INDICATES CALCULATED CORNER.
- BASIS OF BEARING DERIVED FROM COLORADO COORDINATE SYSTEM OF 1983 NORTH ZONE.
- ALL MEASURED DISTANCES ARE GRID.
- COMBINED SCALE FACTOR: .99972908 CALCULATED FROM THE SE. CORNER OF SECTION 18, T2N, R63W.
- WELL FOOTAGES ARE MEASURED AT RIGHT ANGLES TO THE SECTION LINES.
- NO. 1 & NO. 2 AS SHOWN HEREON ARE GOVERNMENT LOTS 1 & 2 PER THE ORIGINAL GLO SURVEY.

## WELL PAD - KBL 02N-63W-19

### MULTI-WELL PLAN

KBL 1918-01H, KBL 1918-02H, KBL 1918-03H,  
KBL 1918-04H, KBL 1918-05H, KBL 1918-06H,  
KBL 1930-07H, KBL 1930-08H, KBL 1930-09H,  
KBL 1930-10H, KBL 1930-11H & KBL 1930-12H  
LOCATED IN SECTIONS 18, 19 & 30  
T2N, R63W, 6TH P.M.  
WELD COUNTY, COLORADO



5950 Cedar Springs Road, Suite 200  
Dallas, Texas 75235



## CONSULTING, LLC

SHERIDAN OFFICE  
1095 Saberton Avenue  
Sheridan, Wyoming 82801  
Phone 307-674-0609

LOVELAND OFFICE  
6706 North Franklin Avenue  
Loveland, Colorado 80538  
Phone 970-776-4331

DRAFTED BY:	LMO	CHECKED BY:	RKF	SHEET NO:
DATE DRAFTED:	6/25/19	DATE SURVEYED:	6/19/19	1C
REVISED:		FILE NAME:	17-193	1C OF 2

# KBL 02N-63W-19

## WELL NOTES:

### KBL 1918-01H

SURFACE: 1807' FSL, 2171' FEL, SEC. 19  
BOTTOM HOLE: 2500' FSL, 50' FWL, SEC. 18

### KBL 1918-02H

SURFACE: 1807' FSL, 2156' FEL, SEC. 19  
BOTTOM HOLE: 2180' FSL, 480' FWL, SEC. 18

### KBL 1918-03H

SURFACE: 1807' FSL, 2141' FEL, SEC. 19  
BOTTOM HOLE: 2180' FSL, 1020' FWL, SEC. 18

### KBL 1918-04H

SURFACE: 1807' FSL, 2126' FEL, SEC. 19  
BOTTOM HOLE: 2180' FSL, 1560' FWL, SEC. 18

### KBL 1918-05H

SURFACE: 1807' FSL, 2111' FEL, SEC. 19  
BOTTOM HOLE: 2180' FSL, 2100' FWL, SEC. 18

### KBL 1918-06H

SURFACE: 1807' FSL, 2096' FEL, SEC. 19  
BOTTOM HOLE: 2180' FSL, 2640' FWL, SEC. 18

### KBL 1930-07H

SURFACE: 1806' FSL, 2081' FEL, SEC. 19  
BOTTOM HOLE: 460' FSL, 50' FWL, SEC. 30

### KBL 1930-08H

SURFACE: 1806' FSL, 2066' FEL, SEC. 19  
BOTTOM HOLE: 460' FSL, 480' FWL, SEC. 30

### KBL 1930-09H

SURFACE: 1806' FSL, 2051' FEL, SEC. 19  
BOTTOM HOLE: 460' FSL, 1020' FWL, SEC. 30

### KBL 1930-10H

SURFACE: 1806' FSL, 2036' FEL, SEC. 19  
BOTTOM HOLE: 460' FSL, 1560' FWL, SEC. 30

### KBL 1930-11H

SURFACE: 1806' FSL, 2021' FEL, SEC. 19  
BOTTOM HOLE: 460' FSL, 2100' FEL, SEC. 30

### KBL 1930-12H

SURFACE: 1806' FSL, 2006' FEL, SEC. 19  
BOTTOM HOLE: 460' FSL, 2640' FEL, SEC. 30

## WELL PAD - KBL 02N-63W-19

### MULTI-WELL PLAN

KBL 1918-01H, KBL 1918-02H, KBL 1918-03H,  
KBL 1918-04H, KBL 1918-05H, KBL 1918-06H,  
KBL 1930-07H, KBL 1930-08H, KBL 1930-09H,  
KBL 1930-10H, KBL 1930-11H & KBL 1930-12H  
LOCATED IN SECTIONS 18, 19 & 30  
T2N, R63W, 6TH P.M.  
WELD COUNTY, COLORADO



5950 Cedar Springs Road, Suite 200  
Dallas, Texas 75235



## CONSULTING, LLC

SHERIDAN OFFICE  
1095 Saberton Avenue  
Sheridan, Wyoming 82801  
Phone 307-674-0609

LOVELAND OFFICE  
6706 North Franklin Avenue  
Loveland, Colorado 80538  
Phone 970-776-4331

DRAFTED BY:	LMO	CHECKED BY:	RKF	SHEET NO:
DATE DRAFTED:	6/25/19	DATE SURVEYED:	6/19/19	2
REVISED:		FILE NAME:	17-193	2 OF 2