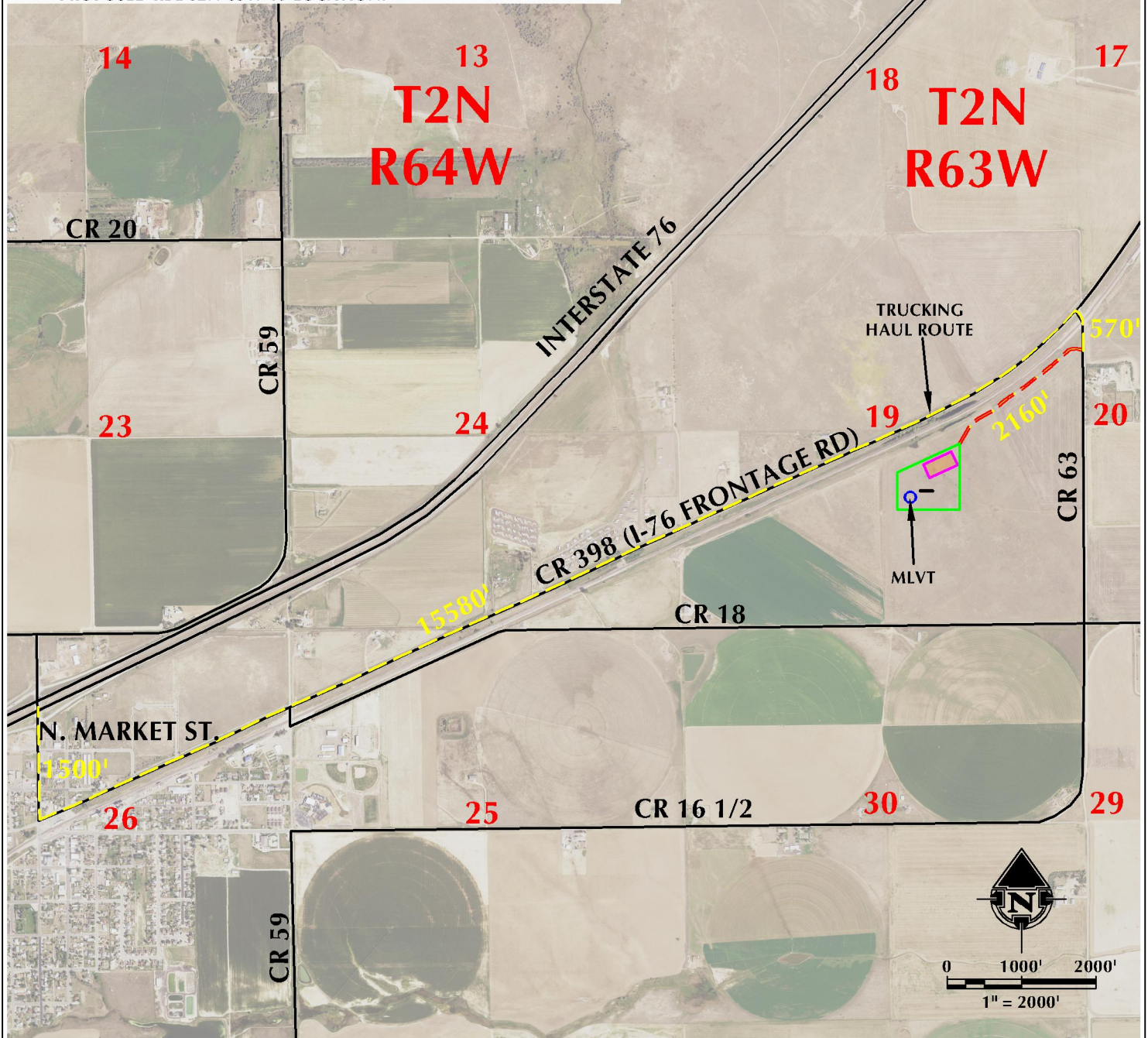


ACCESS: FROM INTERSECTION OF I-76 AND N. MARKET ST. TRAVEL APPROXIMATELY 1500' SOUTH TO CR 398 (I-76 FRONTAGE RD). EXIT EAST AND TRAVEL FOR APPROXIMATELY 15580' TO CR 63. EXIT SOUTH AND CONTINUE 570' TO PROPOSED ACCESS LOCATION TO WEST. THEN TRAVEL SOUTHWEST APPROXIMATELY 2160' TO PROPOSED KBL 02N-63W-19 LOCATION.



LEGEND

- PROPOSED WELL
- ACCESS ROAD
- PUBLIC ROAD
- ▭ DISTURBANCE AREA
- ▭ PROPOSED FACILITY
- MLVT

INTERSECTION OF
ACCESS ROAD AND CR 63

LATITUDE: 40.126755°

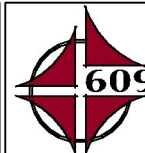
LONGITUDE: -104.470755°

PAD - KBL 02N-63W-19

ACCESS ROAD MAP
KBL 1918-01H, KBL 1918-02H, KBL 1918-03H,
KBL 1918-04H, KBL 1918-05H, KBL 1918-06H,
KBL 1930-07H, KBL 1930-08H, KBL 1930-09H,
KBL 1930-10H, KBL 1930-11H & KBL 1930-12H
LOCATED IN SECTION 19
T2N, R63W, 6TH P.M.
WELD COUNTY, COLORADO



5950 Cedar Springs Road, Suite 200
Dallas, Texas 75235



CONSULTING, LLC

SHERIDAN OFFICE
1095 Saberton Avenue
Sheridan, Wyoming 82801
Phone 307-674-0609

LOVELAND OFFICE
6706 North Franklin Avenue
Loveland, Colorado 80538
Phone 970-776-4331

SCALE:	1" = 2000ft	NAD83 CO-Nft
DRAWN:	DJD	DATE: 7/3/19
REVISED:	SRS	DATE: 9/10/19