



# Kerr-McGee Oil & Gas Onshore LP

A subsidiary of Anadarko Petroleum Corporation

1099 18<sup>th</sup> Street  
Denver, CO 80202  
720-929-6000

June 24, 2019

Jeff Robbins  
Director, Colorado Oil and Gas Conservation Commission  
Department of Natural Resources  
The Chancery Building  
1120 Lincoln Street, Suite 801  
Denver, CO 80203

**Re: 30 Day Certification Letter - 318A.e**

WINDSOCK 21-3HZ (Doc No. 402011493)

Township 1 North, Range 68 West

Section 21: SWSE

Unit Acreage: 800 Acres

Proposed Spacing Unit:

01N68W SEC 28: N2NW;

01N68W SEC 21: W2;

01N68W SEC 16: W2;

01N68W SEC 09: S2SW

Weld County, Colorado

Dear Director Robbins:

Kerr-McGee Oil and Gas Onshore LP ("KMG") hereby certifies that a thirty (30) day notice has been given by certified mail to all mineral owners in the proposed wellbore spacing unit. We have not received any objections to such well location, proposed spacing unit, or additional producing formation. KMG hereby respectfully requests approval of this boundary well.

If you have any questions or issues regarding this permit, please contact me at (720) 929-3242.

Sincerely,

**Kerr-McGee Oil and Gas Onshore LP**

A handwritten signature in black ink, appearing to be 'EH' or similar initials, written in a cursive style.

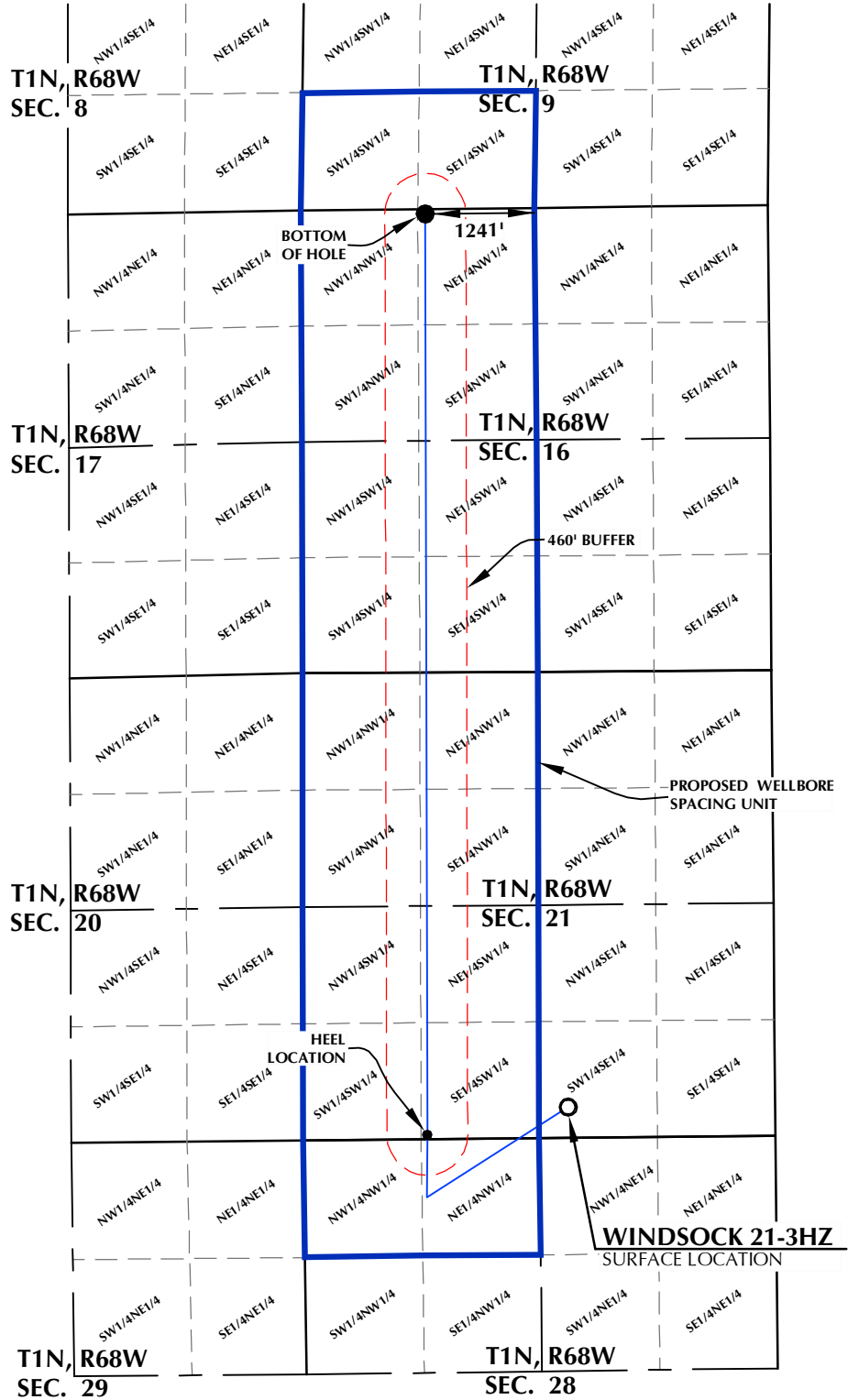
Erin Hampe  
Regulatory Analyst

Enclosure

DISTANCE FROM COMPLETED  
PORTION OF WELLBORE TO  
NEAREST UNIT BOUNDARY= 1241'

# WINDSOCK 21-3HZ WELLBORE SPACING UNIT

**SURFACE LOCATION: NAD 83**  
GROUND ELEVATION= 5222.3'  
LATITUDE= 40.030323°  
LONGITUDE= -105.007535°  
LATITUDE= 40°01'49.164"  
LONGITUDE= -105°00'27.126"  
**HEEL LOCATION: NAD 83**  
LATITUDE= 40.029484°  
LONGITUDE= -105.013258°  
LATITUDE= 40°01'46.142"  
LONGITUDE= -105°00'47.728"  
**BOTTOM HOLE LOCATION: NAD 83**  
LATITUDE= 40.058228°  
LONGITUDE= -105.013129°  
LATITUDE= 40°03'29.621"  
LONGITUDE= -105°00'47.264"



## NOTES:

1. DRAWING LATITUDE AND LONGITUDE COORDINATES ARE NAD 83 (2011)(EPOCH:2010).
2. ELEVATION BASED ON NAVD88 (GEOID12B).
3. BASIS OF BEARING DERIVED FROM COLORADO COORDINATE SYSTEM OF 1983 NORTH ZONE.
4. ALL MEASURED DISTANCES ARE GRID. COMBINED SCALE FACTOR: .99971980 CALCULATED FROM THE NW. CORNER OF SECTION 21, T1N, R68W.

## WELL PAD - WINDSOCK 15-21HZ

WINDSOCK 21-3HZ  
WELLBORE SPACING UNIT  
349' FSL & 2353' FEL SWSE (SURFACE)  
50' FSL & 1410' FWL SESW (HEEL)  
LOCATED IN SECTION 21  
50' FNL & 1413' FWL NENW (BOTTOM)  
LOCATED IN SECTION 16  
T1N, R68W, 6TH P.M.  
WELD COUNTY, COLORADO

**Kerr-McGee Oil &  
Gas Onshore L.P.**  
1099 18th Street  
Denver, Colorado 80202



## CONSULTING, LLC

**SHERIDAN OFFICE**  
1095 Saberton Avenue  
Sheridan, Wyoming 82801  
Phone 307-674-0609

**LOVELAND OFFICE**  
6706 North Franklin Avenue  
Loveland, Colorado 80538  
Phone 970-776-4331

DRAFTED BY:	LMO	CHECKED BY:	RKF
DATE DRAFTED:	3/12/19	DATE SURVEYED:	11/14/18
REVISED:		FILE NAME:	15-64