



Kerr-McGee Oil & Gas Onshore LP

A subsidiary of Anadarko Petroleum Corporation

1099 18th Street
Denver, CO 80202
720-929-6000

June 24, 2019

Jeff Robbins
Director, Colorado Oil and Gas Conservation Commission
Department of Natural Resources
The Chancery Building
1120 Lincoln Street, Suite 801
Denver, CO 80203

Re: 30 Day Certification Letter - 318A.e

WINDSOCK 21-2HZ (Doc No. 402011492)

Township 1 North, Range 68 West

Section 21: SWSE

Unit Acreage: 800 Acres

Proposed Spacing Unit:

01N68W SEC 28: N2NW;

01N68W SEC 21: W2;

01N68W SEC 16: W2;

01N68W SEC 09: S2SW

Weld County, Colorado

Dear Director Robbins:

Kerr-McGee Oil and Gas Onshore LP (“KMG”) hereby certifies that a thirty (30) day notice has been given by certified mail to all mineral owners in the proposed wellbore spacing unit. We have not received any objections to such well location, proposed spacing unit, or additional producing formation. KMG hereby respectfully requests approval of this boundary well.

If you have any questions or issues regarding this permit, please contact me at (720) 929-3242.

Sincerely,

Kerr-McGee Oil and Gas Onshore LP

A handwritten signature in black ink, appearing to read 'EH'.

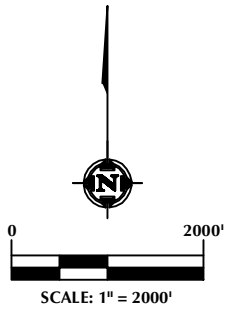
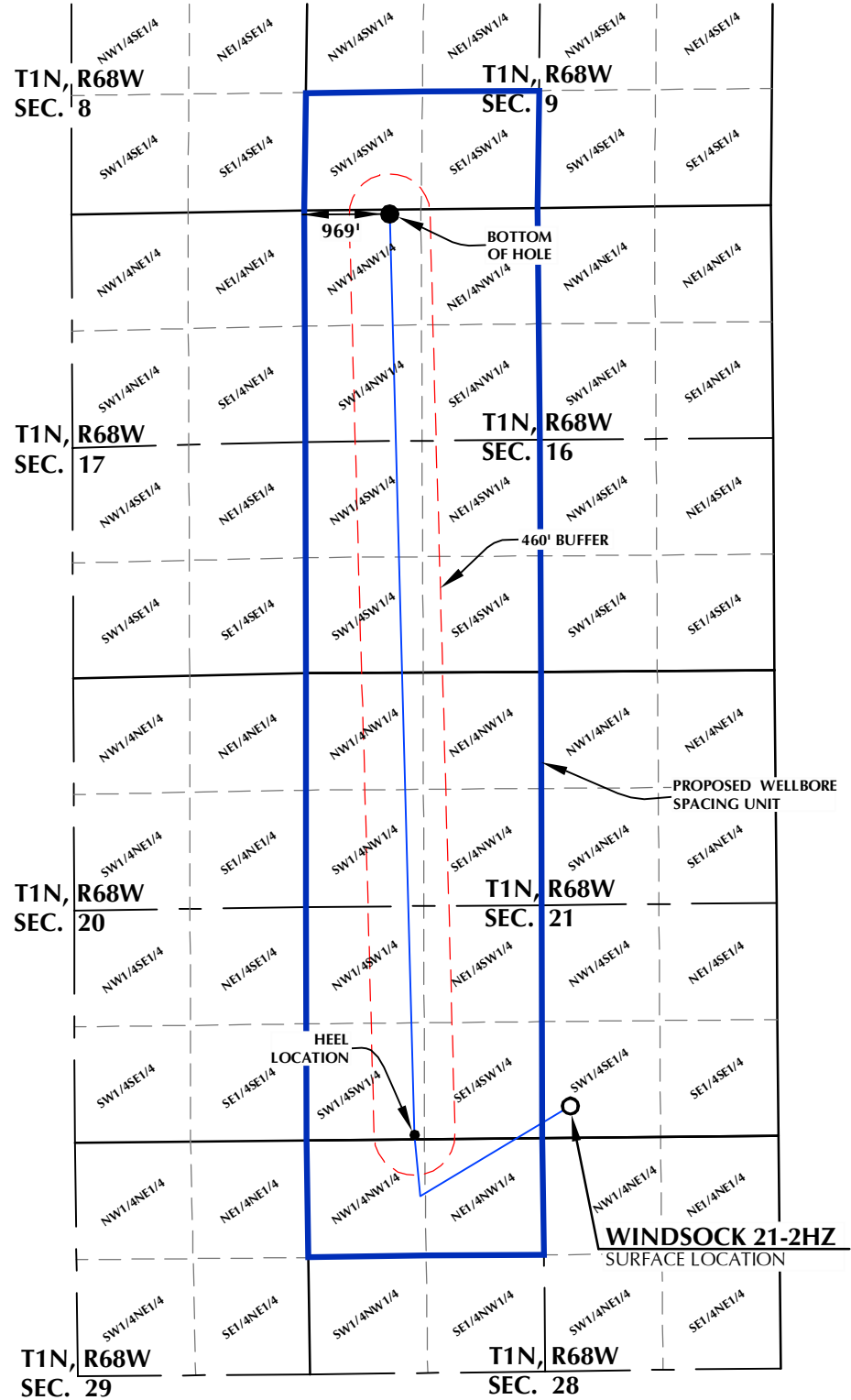
Erin Hampe
Regulatory Analyst

Enclosure

DISTANCE FROM COMPLETED
PORTION OF WELLBORE TO
NEAREST UNIT BOUNDARY= 969'

WINDSOCK 21-2HZ WELLBORE SPACING UNIT

SURFACE LOCATION: NAD 83
GROUND ELEVATION= 5222.2'
LATITUDE= 40.030353°
LONGITUDE= -105.007573°
LATITUDE= 40°01'49.269"
LONGITUDE= -105°00'27.262"
HEEL LOCATION: NAD 83
LATITUDE= 40.029482°
LONGITUDE= -105.013908°
LATITUDE= 40°01'46.134"
LONGITUDE= -105°00'50.067"
BOTTOM HOLE LOCATION: NAD 83
LATITUDE= 40.058222°
LONGITUDE= -105.014716°
LATITUDE= 40°03'29.599"
LONGITUDE= -105°00'52.978"



- NOTES:**
1. DRAWING LATITUDE AND LONGITUDE COORDINATES ARE NAD 83 (2011)(EPOCH:2010).
 2. ELEVATION BASED ON NAVD88 (GEOID12B).
 3. BASIS OF BEARING DERIVED FROM COLORADO COORDINATE SYSTEM OF 1983 NORTH ZONE.
 4. ALL MEASURED DISTANCES ARE GRID. COMBINED SCALE FACTOR: .99971980 CALCULATED FROM THE NW. CORNER OF SECTION 21, T1N, R68W.

WELL PAD - WINDSOCK 15-21HZ

WINDSOCK 21-2HZ
WELLBORE SPACING UNIT
359' FSL & 2364' FEL SWSE (SURFACE)
50' FSL & 1228' FWL SWSW (HEEL)
LOCATED IN SECTION 21
50' FNL & 969' FWL NWNW (BOTTOM)
LOCATED IN SECTION 16
T1N, R68W, 6TH P.M.
WELD COUNTY, COLORADO

**Kerr-McGee Oil &
Gas Onshore L.P.**
1099 18th Street
Denver, Colorado 80202



CONSULTING, LLC
SHERIDAN OFFICE
1095 Saberton Avenue
Sheridan, Wyoming 82801
Phone 307-674-0609
LOVELAND OFFICE
6706 North Franklin Avenue
Loveland, Colorado 80538
Phone 970-776-4331

DRAFTED BY:	LMO	CHECKED BY:	RKF
DATE DRAFTED:	3/12/19	DATE SURVEYED:	11/14/18
REVISED:		FILE NAME:	15-64

K:\IAMDARCO\2015\15_64_DEARBTH\T1N_R68W_21\PLAT\WINDSOCK\WINDSOCK_15-21HZ_SU.dwg, 3/11/2019 9:47:56 AM, lba