

WELLBORE CONTINUES INTO SECTION 16

# T1N, R68W

MATCH LINE SEE SHEET 2

NW. COR. SEC. 21, T1N, R68W FOUND 2 1/2" ALUM. CAP L.S. NO. 23501

S 89°38'40" W 2663.00' (M)

S 89°38'17" W 2662.51' (M)

NE. COR. SEC. 21, T1N, R68W FOUND 2" ALUM. CAP ILLEGIBLE

N 00°00'26" E 2654.34' (M)

N 01°33'08" W 10472' GRID  
N 01°14'03" W TRUE  
N 09°26'08" W MAGNETIC

N 00°15'52" W 2649.00' (M)

N. 1/4 COR. SEC. 21, T1N, R68W FOUND 2" ALUM. CAP L.S. NO. 28258

SURFACE LOCATION: NAD 83  
GROUND ELEVATION= 5222.2'  
LATITUDE= 40.030353°  
LONGITUDE= -105.007573°  
LATITUDE= 40°01'49.269"  
LONGITUDE= -105°00'27.262"  
HEEL LOCATION: NAD 83  
LATITUDE= 40.029482°  
LONGITUDE= -105.013908°  
LATITUDE= 40°01'46.134"  
LONGITUDE= -105°00'50.067"  
BOTTOM HOLE LOCATION: NAD 83  
LATITUDE= 40.058222°  
LONGITUDE= -105.014716°  
LATITUDE= 40°03'29.599"  
LONGITUDE= -105°00'52.978"

N 00°30'01" W 1322.05' (M)

N. 1/16 COR. SEC. 21 & SEC. 22 T1N, R68W FOUND 2 1/2" ALUM. CAP ILLEGIBLE

N 00°29'12" W 1321.90' (M)

W. 1/4 COR. SEC. 21, T1N, R68W FOUND 3 1/4" ALUM. CAP P.L.S. NO. 26606

S 89°31'52" W 2675.60' (M)

S 89°31'45" W 1336.73' (M)

S 89°31'50" W 1336.37' (M)

CENTER 1/4 COR. SEC. 21, T1N, R68W FOUND 2 1/2" ALUM. CAP P.L.S. NO. 28286

## 21

CE. 1/16 COR. SEC. 21, T1N, R68W FOUND 2" ALUM. CAP P.L.S. NO. 28286

E. 1/4 COR. SEC. 21, T1N, R68W FOUND 2" ALUM. CAP L.S. NO. 25937

N 00°06'38" W 2654.36' (M)

N 00°16'10" W 2649.74' (M)

WINDSOCK 21-2HZ SURFACE LOCATION

N 00°30'18" W 1321.79' (M)

S. 1/16 COR. SEC. 21 & SEC. 22 T1N, R68W FOUND 2" ALUM. CAP L.S. NO. 25937

N 00°30'24" W 1321.66' (M)

SW. COR. SEC. 21, T1N, R68W FOUND 3 1/4" ALUM. CAP ILLEGIBLE

HEEL LOCATION  
1228'  
50'

S. 1/4 COR. SEC. 21, T1N, R68W FOUND 2 1/2" ALUM. CAP P.L.S. NO. 38512

359'

S 89°23'46" W 1342.02' (M)

S 89°23'46" W 1342.02' (M)

SE. COR. SEC. 21, T1N, R68W FOUND 2" ALUM. CAP L.S. NO. 25937

N 00°50'46" W 2658.18' (M)

W. 1/4 COR. SEC. 28, T1N, R68W FOUND 2 1/2" ALUM. CAP P.L.S. NO. 38512

N 00°42'14" W 2649.63' (M)

E. 1/16 COR. SEC. 21 & SEC. 28, T1N, R68W FOUND 2 1/2" ALUM. CAP P.L.S. NO. 38512

N 00°33'21" W 2642.83' (M)

E. 1/4 COR. SEC. 28, T1N, R68W FOUND 3 1/4" ALUM. CAP P.L.S. NO. 18482

### CERTIFICATE OF SURVEYOR:

THIS IS TO CERTIFY THAT THE ABOVE PLAT WAS PREPARED FROM FIELD NOTES OF ACTUAL SURVEYS MADE BY ME OR UNDER MY SUPERVISION AND THAT THE SAME ARE TRUE AND CORRECT TO THE BEST OF MY KNOWLEDGE AND BELIEF. THIS CERTIFICATE DOES NOT REPRESENT A LAND SURVEY PLAT OR IMPROVEMENT SURVEY PLAT AS DEFINED BY C.S. 67-5-102 AND CANNOT BE RELIED UPON TO DETERMINE OWNERSHIP.

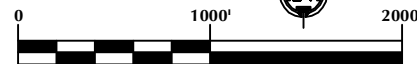
*Randall K. French*  
38512  
PROFESSIONAL LAND SURVEYOR  
3/12/19  
COLORADO REGISTRATION NUMBER 38512

NOTICE: ACCORDING TO COLORADO STATE LAW YOU MUST TAKE LEGAL ACTION BASED UPON ANY DEFECT IN THIS SURVEY WITHIN THREE YEARS AFTER YOU FIRST DISCOVER SUCH DEFECT. IN NO EVENT MAY ANY ACTION BASED UPON ANY DEFECT IN THIS SURVEY BE COMMENCED MORE THAN TEN YEARS FROM THE DATE ON THE CERTIFICATION SHOWN HEREON.

## 28

19°05"  
7°53"  
TRUE GRID MAGNETIC

NOTE: MAGNETIC NORTH IS CURRENT AS OF 11/14/2018. MAGNETIC NORTH CHANGES WEST 0°06' PER YEAR.



SCALE: 1" = 1000'

### NOTES:

- ▲ INDICATES SECTION CORNER.
- INDICATES CALCULATED CORNER.
- ELEVATION BASED ON NAVD88 (GEOID12B).
- BASIS OF BEARING DERIVED FROM COLORADO COORDINATE SYSTEM OF 1983 NORTH ZONE.
- ALL MEASURED DISTANCES ARE GRID.
- COMBINED SCALE FACTOR: .99971980 CALCULATED FROM THE NW. CORNER OF SECTION 21, T1N, R68W.
- OPERATOR: JEREMY GROVES / PDOP = 1.4.
- SEE ADDENDUM TO WELL LOCATION CERTIFICATE FOR EXISTING IMPROVEMENTS WITHIN 500' OF THE WELL PAD.
- WELL FOOTAGES ARE MEASURED AT RIGHT ANGLES TO THE SECTION LINES.
- THE BOTTOM OF HOLE BEARS N01°33'08"W, 10472' FROM THE HEEL LOCATION.

### WELL PAD - WINDSOCK 15-21HZ

WINDSOCK 21-2HZ  
WELL LOCATION CERTIFICATE  
359' FSL & 2364' FEL SWSE (SURFACE)  
50' FSL & 1228' FWL SWSW (HEEL)  
LOCATED IN SECTION 21  
50' FNL & 969' FWL NWNW (BOTTOM)  
LOCATED IN SECTION 16  
T1N, R68W, 6TH P.M.  
WELD COUNTY, COLORADO

Kerr-McGee Oil &  
Gas Onshore L.P.  
1099 18th Street  
Denver, Colorado 80202



### CONSULTING, LLC

SHERIDAN OFFICE  
1095 Saberton Avenue  
Sheridan, Wyoming 82801  
Phone 307-674-0609

LOVELAND OFFICE  
6706 North Franklin Avenue  
Loveland, Colorado 80538  
Phone 970-776-4331

DRAFTED BY: LMO	CHECKED BY: RKF	SHEET NO: <b>1</b> 1 OF 2
DATE DRAFTED: 3/12/19	DATE SURVEYED: 11/14/18	
REVISED:	FILE NAME: 15-64	

# T1N, R68W

E. 1/16 COR.  
SEC. 9 & SEC. 16, T1N, R68W  
FOUND 2 1/2" ALUM. CAP  
P.L.S. NO. 38512

NE. COR.  
SEC. 16, T1N, R68W  
FOUND 2 1/2" ALUM. CAP  
ILLEGIBLE

NW. COR.  
SEC. 16, T1N, R68W  
FOUND 2 1/2" ALUM. CAP  
L.S. NO. 23501

S 89°22'29" W  
1327.26' (M)  
N. 1/4 COR.  
SEC. 16, T1N, R68W  
FOUND 2 1/2" ALUM. CAP  
L.S. NO. 22097

S 89°23'41" W  
1325.25' (M)

N 00°12'49" W 2630.89' (M)

N 01°33'08" W 10472' GRID  
N 01°14'03" W TRUE  
N 09°26'08" W MAGNETIC

N 00°18'49" W  
2636.19' (M)

N 00°28'28" W 2642.38' (M)

BOTTOM OF HOLE:  
50' FNL & 969' FWL

CENTER 1/4 COR.  
SEC. 16, T1N, R68W  
FOUND 3 1/4" ALUM. CAP  
P.L.S. NO. 6973

S 89°30'45" W  
2658.56' (M)

16

S 89°31'07" W  
2659.90' (M)

E. 1/4 COR.  
SEC. 16, T1N, R68W  
FOUND 2" ALUM. CAP  
L.S. NO. 14083

W. 1/4 COR.  
SEC. 16, T1N, R68W  
FOUND 2" ALUM. CAP  
L.S. NO. 14083

N 00°13'29" W 2630.78' (M)

N 00°19'18" W  
2636.89' (M)

N 00°22'42" W 2642.44' (M)

**SURFACE LOCATION: NAD 83**  
GROUND ELEVATION= 5222.2'  
LATITUDE= 40.030353°  
LONGITUDE= -105.007573°  
LATITUDE= 40°01'49.269"  
LONGITUDE= -105°00'27.262"  
**HEEL LOCATION: NAD 83**  
LATITUDE= 40.029482°  
LONGITUDE= -105.013908°  
LATITUDE= 40°01'46.134"  
LONGITUDE= -105°00'50.067"  
**BOTTOM HOLE LOCATION: NAD 83**  
LATITUDE= 40.058222°  
LONGITUDE= -105.014716°  
LATITUDE= 40°03'29.599"  
LONGITUDE= -105°00'52.978"

SW. COR.  
SEC. 16, T1N, R68W  
FOUND 2 1/2" ALUM. CAP  
L.S. NO. 23501

S 89°38'40" W 2663.00' (M)

S. 1/4 COR.  
SEC. 16, T1N, R68W  
FOUND 2" ALUM. CAP  
L.S. NO. 28258

S 89°38'17" W 2662.51' (M)

SE. COR.  
SEC. 16, T1N, R68W  
FOUND 2" ALUM. CAP  
ILLEGIBLE

MATCH LINE  
SEE SHEET 1

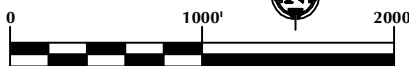
## CERTIFICATE OF SURVEYOR:

THIS IS TO CERTIFY THAT THE ABOVE PLAT WAS PREPARED FROM FIELD NOTES OF ACTUAL SURVEYS MADE BY ME OR UNDER MY SUPERVISION AND THAT THE SAME ARE TRUE AND CORRECT TO THE BEST OF MY KNOWLEDGE AND BELIEF. THIS CERTIFICATE DOES NOT REPRESENT A LAND SURVEY PLAT OR IMPROVEMENT SURVEY PLAT AS DEFINED BY C.R.S. 38-5-102 AND CANNOT BE RELIED UPON TO DETERMINE OWNERSHIP.

*Randall K. French*  
38512  
PROFESSIONAL LAND SURVEYOR  
3/12/19  
RANDALL K. FRENCH  
PROFESSIONAL LAND SURVEYOR  
COLORADO REGISTRATION NUMBER 38512

NOTICE:  
ACCORDING TO COLORADO STATE LAW YOU MUST TAKE LEGAL ACTION BASED UPON ANY DEFECT IN THIS SURVEY WITHIN THREE YEARS AFTER YOU FIRST DISCOVER SUCH DEFECT. IN NO EVENT MAY ANY ACTION BASED UPON ANY DEFECT IN THIS SURVEY BE COMMENCED MORE THAN TEN YEARS FROM THE DATE ON THE CERTIFICATION SHOWN HEREON.

NOTE:  
MAGNETIC NORTH IS  
CURRENT AS OF 11/14/2018.  
MAGNETIC NORTH CHANGES  
WEST 0°06' PER YEAR.



SCALE: 1" = 1000'

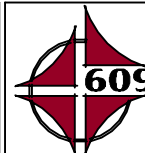
## NOTES:

- ▲ INDICATES SECTION CORNER.
- INDICATES CALCULATED CORNER.
- ELEVATION BASED ON NAVD88 (GEOID12B).
- BASIS OF BEARING DERIVED FROM COLORADO COORDINATE SYSTEM OF 1983 NORTH ZONE.
- ALL MEASURED DISTANCES ARE GRID.
- COMBINED SCALE FACTOR: .99971980 CALCULATED FROM THE NW. CORNER OF SECTION 21, T1N, R68W.
- OPERATOR: JEREMY GROVES / PDOP = 1.4.
- SEE ADDENDUM TO WELL LOCATION CERTIFICATE FOR EXISTING IMPROVEMENTS WITHIN 500' OF THE WELL PAD.
- WELL FOOTAGES ARE MEASURED AT RIGHT ANGLES TO THE SECTION LINES.
- THE BOTTOM OF HOLE BEARS N01°33'08"W, 10472' FROM THE HEEL LOCATION.

## WELL PAD - WINDSOCK 15-21HZ

WINDSOCK 21-2HZ  
WELL LOCATION CERTIFICATE  
359' FSL & 2364' FEL SWSE (SURFACE)  
50' FSL & 1228' FWL SWSW (HEEL)  
LOCATED IN SECTION 21  
50' FNL & 969' FWL NWNW (BOTTOM)  
LOCATED IN SECTION 16  
T1N, R68W, 6TH P.M.  
WELD COUNTY, COLORADO

**Kerr-McGee Oil &  
Gas Onshore L.P.**  
1099 18th Street  
Denver, Colorado 80202



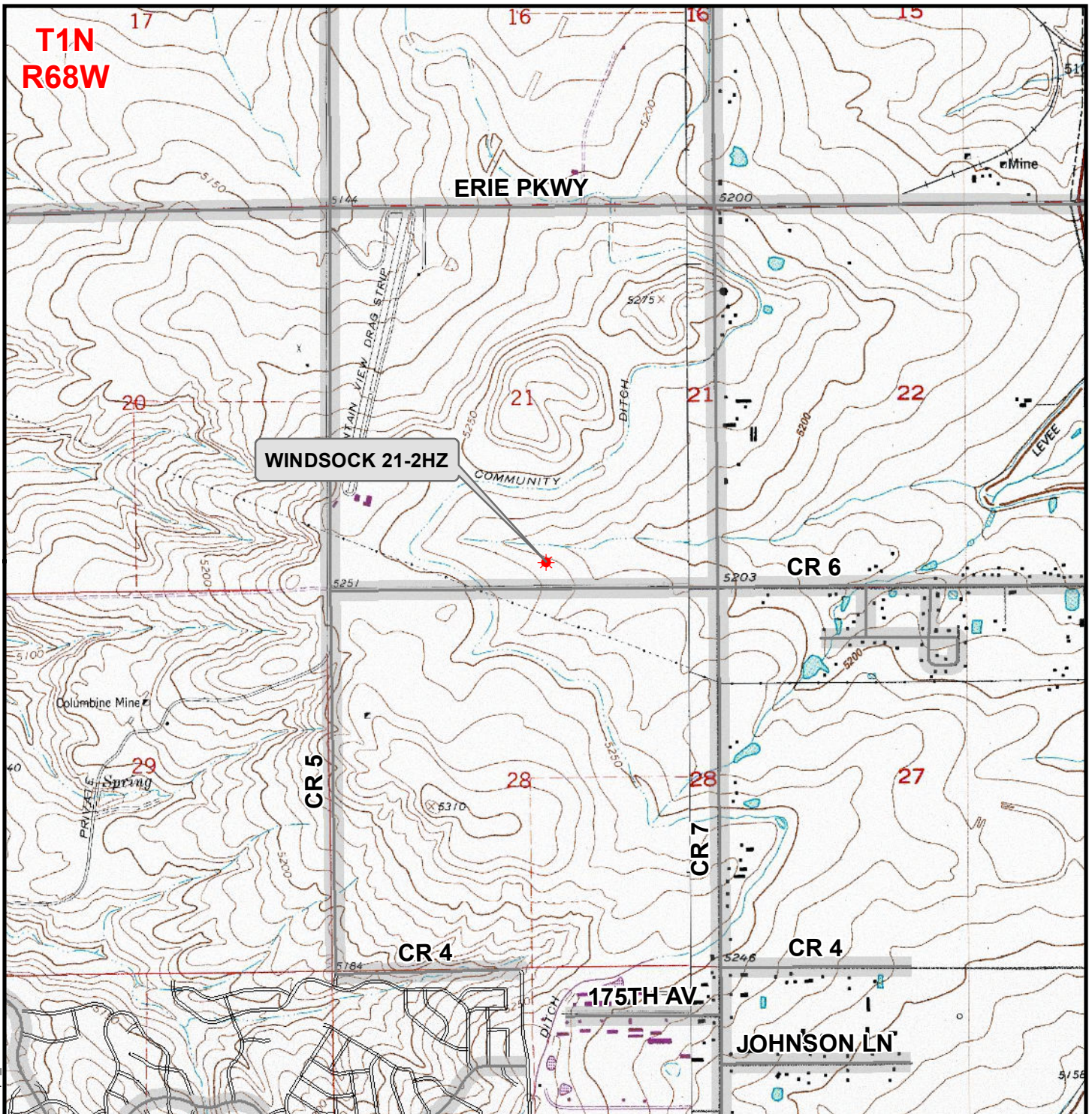
## CONSULTING, LLC

SHERIDAN OFFICE  
1095 Saberton Avenue  
Sheridan, Wyoming 82801  
Phone 307-674-0609

LOVELAND OFFICE  
6706 North Franklin Avenue  
Loveland, Colorado 80538  
Phone 970-776-4331

DRAFTED BY: LMO	CHECKED BY: RKF	SHEET NO: <b>2</b> 2 OF 2
DATE DRAFTED: 3/12/19	DATE SURVEYED: 11/14/18	
REVISED:	FILE NAME: 15-64	

K:\ANADARKO\2015\2015\_64\_DEARMIN\_T1N\_R68W\_21\GIS\Maps\_ABC\Windssock 15-21HZ\WINDSOCK 21-2HZ.mxd 3/12/2019 8:40:26 AM



**Legend**

- Well - Proposed
- Road - Primitive - Existing
- Road - Improved - Existing
- Road - County - Existing
- Road - Highway - Existing

**WELL PAD - WINDSOCK 15-21HZ**  
**GENERAL LOCATION MAP**  
**WINDSOCK 21-2HZ**  
**LOCATED IN SECTION 21**  
**T1N, R68W, 6th P.M.**  
**WELD COUNTY, COLORADO**

**Kerr-McGee Oil & Gas Onshore L.P.**  
 1099 18th Street  
 Denver, Colorado 80202



**CONSULTING, LLC**  
 SHERIDAN OFFICE: 1095 Saberton Avenue, Sheridan, Wyoming 82801, Phone 307-674-0609  
 LOVELAND OFFICE: 6706 North Franklin Avenue, Loveland, Colorado 80538, Phone 970-776-4331

SCALE: 1" = 2,000ft	NAD83 CO-Nft
DRAWN: DP	DATE: 12 Mar 2019
REVISED:	DATE: