



LWD MEMORY LOG

Gamma Ray

LWD MEMORY LOG									
<div><div><div><div><div><div>BAKER</div><div>HUGHES</div><div>a GE company</div></div><div><div><div><div></div></div><div><div>GE</div></div></div></div></div></div></div></div>				Gamma Ray					
Scale: 1:240 True Vertical Depth				Company: Noble Energy Well: Stripes Federal LD18-760 Field: Wattenberg					
Depth Reference: Driller's Depth				Country: Colorado		Country: United States			
Status: Final Print				Surface Location: Latitude: 040° 46' 19.416" N Longitude: 103° 54' 33.012" W		Other Services: Directional			
API No: 05-123-49349-00 Job ID: 109932557				SEC: 7 TWN: 9N RGE: 58W		Elev. KB: N/A Elev. DF: 4872.00 ft Elev. GL: 4842.00 ft			
Permanent Datum (P.D.): Mean Sea Level Log Measured From: Rig Floor				Elevation: Above P.D.: 4872.00 ft		Elev. KB: 4872.00 ft Elev. DF: 4842.00 ft			
Dates				Interval		Magnetic Field Reference			
From: 2019-08-09 To: 2019-08-12 Spud: 2019-07-29		Drilled (ft) Top: 1967.00 Bottom: 16714.00		Logged (ft) Top: 1967.00 Bottom: 16700.00		Azi Reference North: Total Magnetic Field Strength: (nT) Mag to Reference North Correction: (deg)		Grid Dip Angle: (deg) 66.98 52391 6.23	
Borehole Record									
Casing Record									
Hole Size (in)		From (ft)		To (ft)		Size (in)		Weight (lb/ft)	
13.000		30.00		1967.00		9.625		36.00	
8.500		1967.00		16714.00					
Mud Record									
Deviation Record									
Type		From (ft)		To (ft)		Hole Size (in)		Interval (ft)	
Oil Based Mud		1967.00		16714.00		8.500		14747.00	
Acquisition System									
Cadence Plot Studio		RT 5.2 5.2.8472.1		Software Version		Rig: H&P 321		Contractor: Helmerich & Payne Drilling Co	
						District: RMD		Unit: D&E	

(C) 2018 Baker Hughes, a GE company, LLC - All rights reserved. Baker Hughes, a GE company, LLC and its affiliates ("BHGE") provides this information on an "as is" basis for general information purposes and believes it to be accurate as of the date of publication. BHGE does not make any representation as to the accuracy or completeness of the information and makes no warranties of any kind, specific, implied or oral, to the fullest extent permissible by law, including those of merchantability and fitness for a particular purpose or use. BHGE hereby disclaims any and all liability for any direct, indirect, consequential or special damages, claims for lost profits, or third party claims arising from the use of the information, whether a claim is asserted in contract, tort, or otherwise. The BHGE logo is a trademark of Baker Hughes, a GE company, LLC. GE and the GE monogram are trademarks of General Electric Company used under trademark license.

Log Run Summary

Run No	Bit Run No.	Bit Size (in)	Bit Type	Bit Gauge Length (in)	Assembly Type	Logged Interval		Bit Depth Interval		Date / Time		Circ. Hours
						Top	Bottom	From	To	Start Logging	End Logging	
						(ft)	(ft)	(ft)	(ft)			
1	1	8.750	PDC	2.00	AutoTrak Curve	1967.00	16700.00	1967.00	16714.00	2019-08-09 17:16	2019-08-12 06:54	55.72

Crew

Name	Arrive Wellsite	Depart Wellsite	Name	Arrive Wellsite	Depart Wellsite	Name	Arrive Wellsite	Depart Wellsite
Tien Bui	2019-08-08	2019-08-12	Andrew Havs	2019-08-12	2019-08-13			

Mud Properties Record

Date / Time	Run No.	Depth (ft)	Mud Type	Density (ppg)	Viscosity (cP)	pH	Fluid Loss (cm3)	Oil / Water	Source	Total Chlorides (ppm)	K+ (%)
2019-08-08 17:28	1	1967.00	Oil Based Mud	9.2	11	N/A	18.8	78/22	Active Pit	28000	0.00
2019-08-10 11:36	1	5509.00	Oil Based Mud	8.9	10	N/A	18.2	78.6/21.4	Active Pit	28500	0.00
2019-08-11 08:57	1	9568.00	Oil Based Mud	9.4	11	N/A	18.0	79.7/20.3	Active Pit	29000	0.00

Equipment and Service Data

Run No.	Tool	Serial Number	Measurement	Sensor Offset (ft)	Bit Offset (ft)	Max O.D. (in)	Min I.D. (in)
1	AutoTrak Curve Steering Unit	12606359	Near Bit VSS	5.93	6.80	7.000	4.330
1	AutoTrak Curve Steering Unit	12606359	Near Bit Inclination	5.93	6.80	7.000	4.330
1	AutoTrak Curve MWD	14705223	Gamma (single)	2.70	12.97	7.000	3.250
1	AutoTrak Curve MWD	14705223	Directional (mag)	12.27	22.54	7.000	3.250

Service and Tool Mnemonics

Mnemonic	Name	Description
ATC SU	AutoTrak Curve SU	Auto Trak Curve Steering Unit
ATC MWD	AutoTrak Curve MWD	Auto Trak Curve MWD
ATC I CPM	AutoTrak Curve I CPM	Auto Trak Curve I CPM

Comments

- 1 Depth measurements were obtained from a depth control system not supplied or operated by Baker Hughes. Due to lack of control by Baker Hughes logging
engineers, depth calibrations and measurements could not be independently verified.
- 2 Baker Hughes LWD Run 1 utilized 6 3/4 inch NaviGamma service (Gamma Ray and Directional) behind an 8 1/2 inch bit and rotary steerable assembly from 1967 to
16714 feet MD (1967 to 5922 feet TVD).
- 3 The Gamma Ray Apparent (GRAM) data is presented 0 to 300 API, per the customer's request.

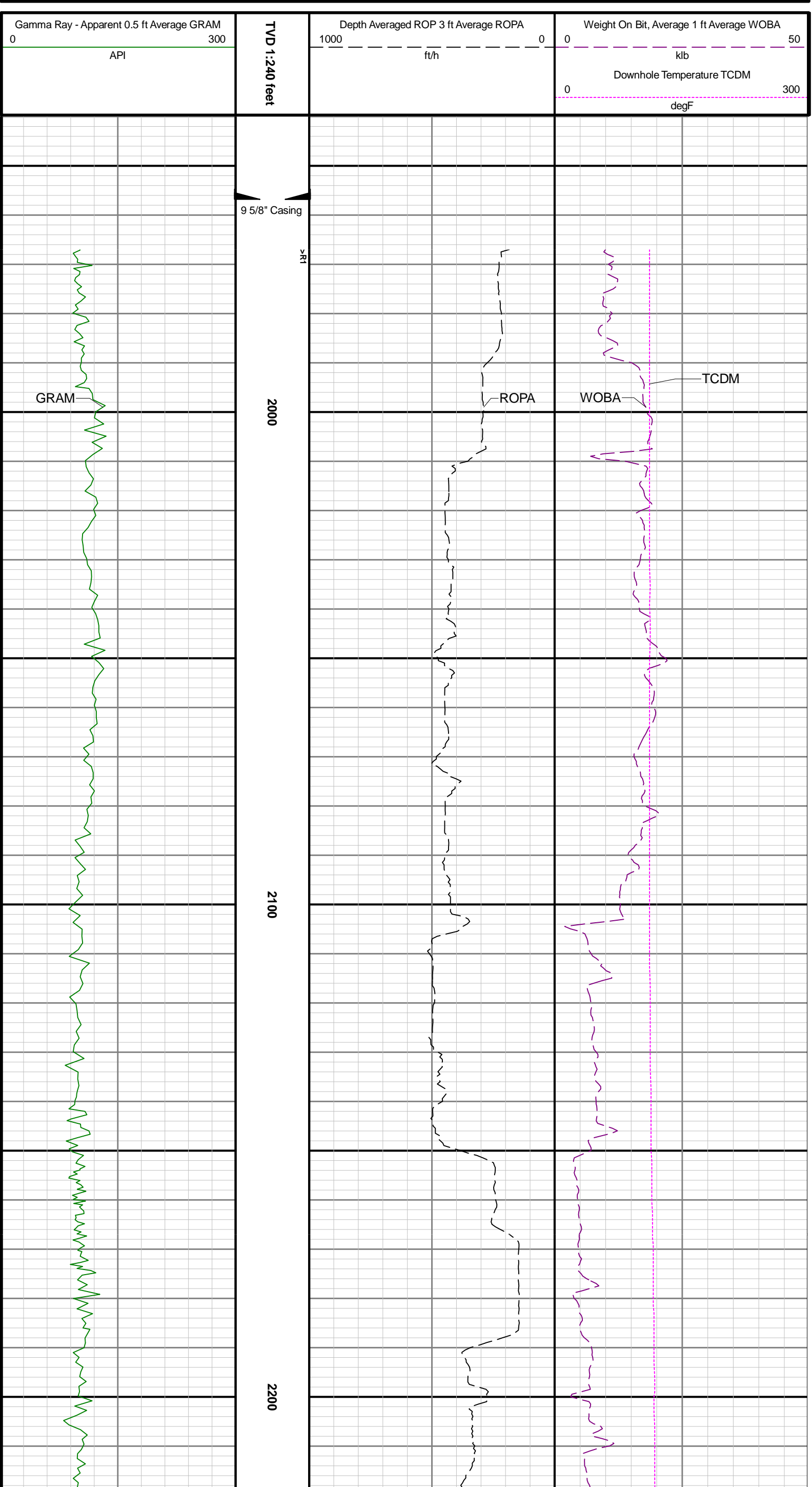
Remarks

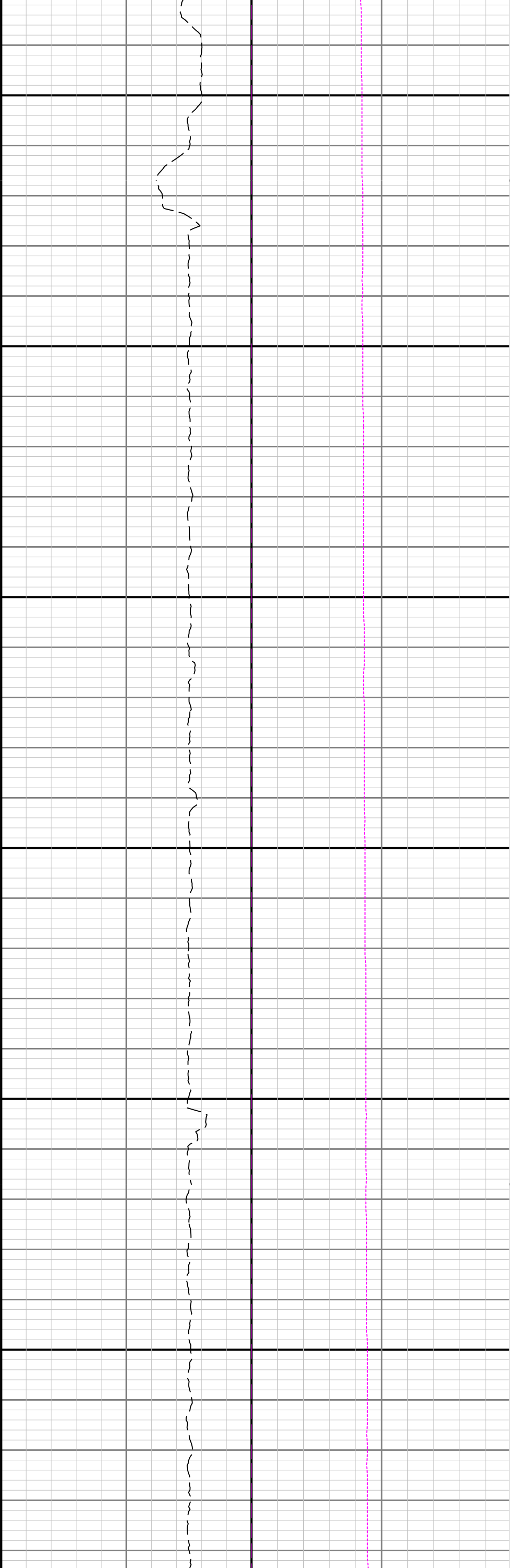
Remarks				
Number	Depth (ft)	Hole Section (in)	Run No.	Remark
1	2295.00	8.500	1	The interval from 2295 to 2360 foot MD (2295 to 2360 foot TVD) has no data for Weight On Bit due to a Cadence Database error

Curve Memorization

Presented Curves	Description	Units
ROP	Depth Averaged ROP 3 ft Average	ft/h

ROFA	Depth Averaged ROF - 5 ft Average	ft
WOBA	Weight On Bit, Average 1 ft Average	klb
GRAM	Gamma Ray - Apparent - Memory 0.5 ft Average	API
TCDM	Directional Real-Time Survey Temperature	degF

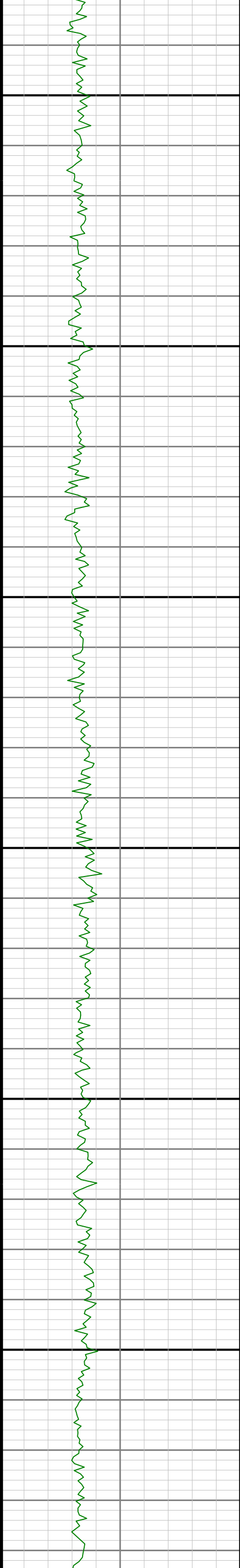


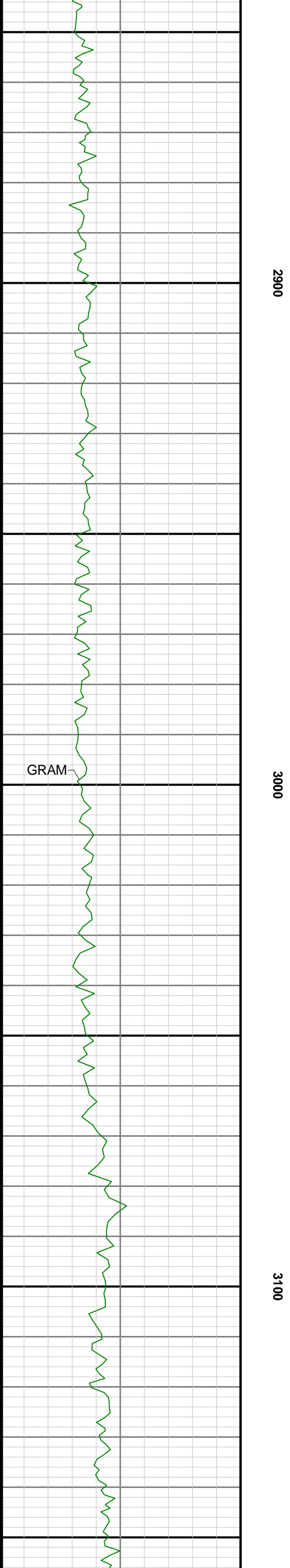
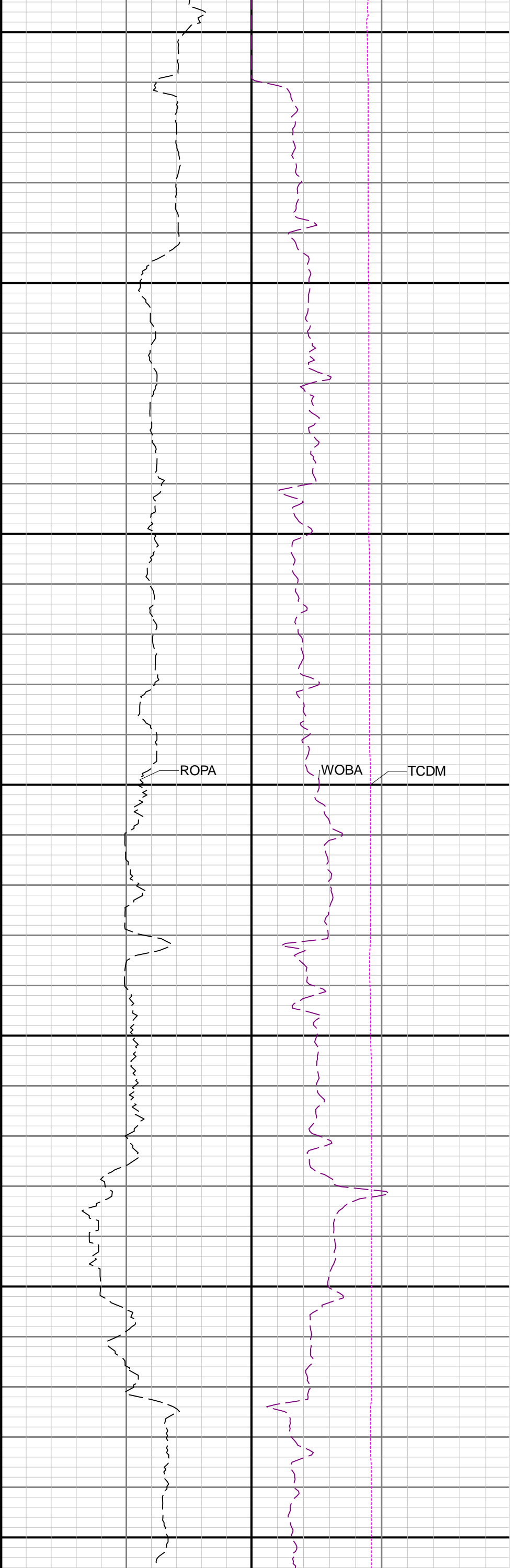


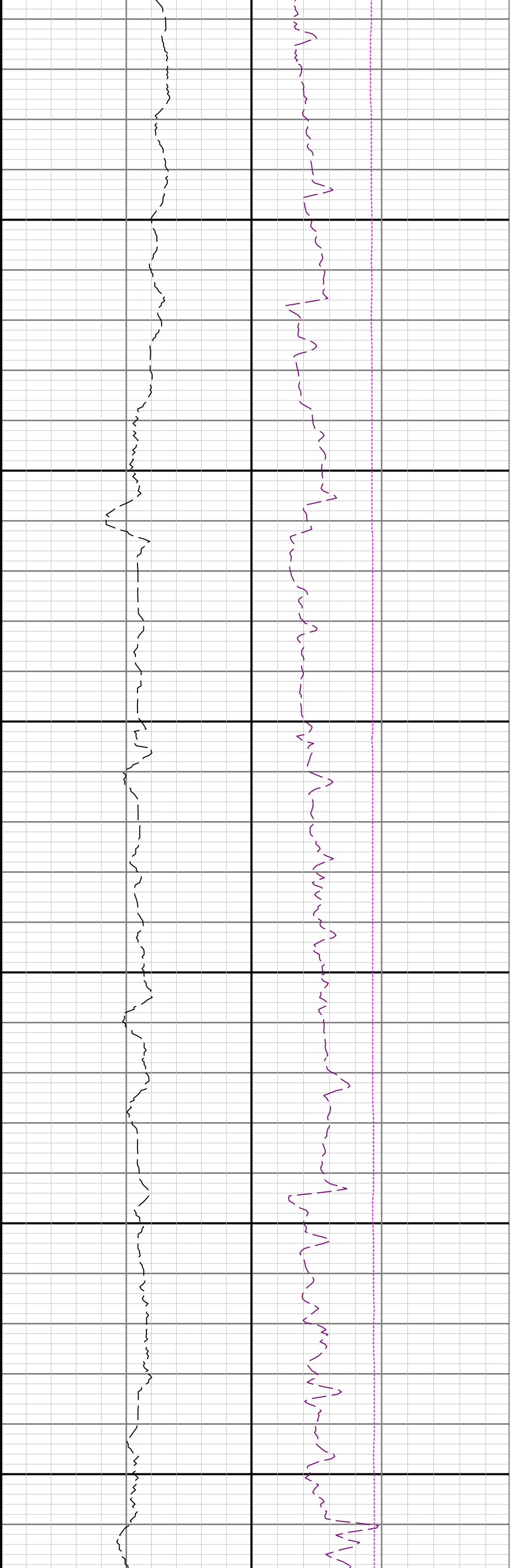
2600

2700

2800



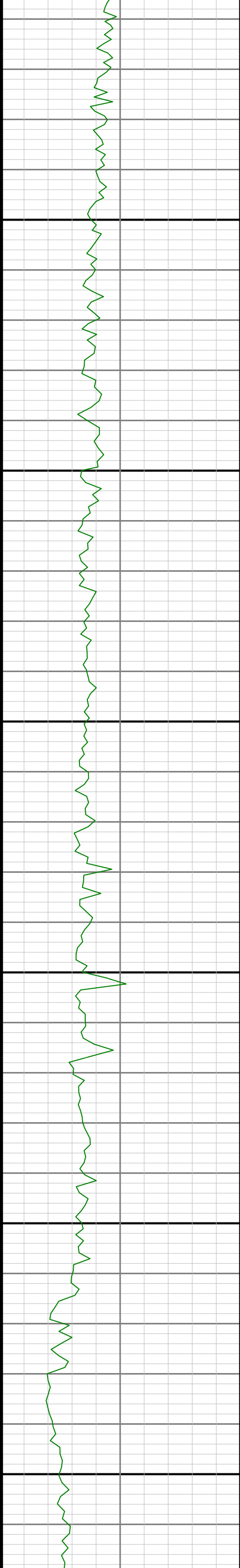


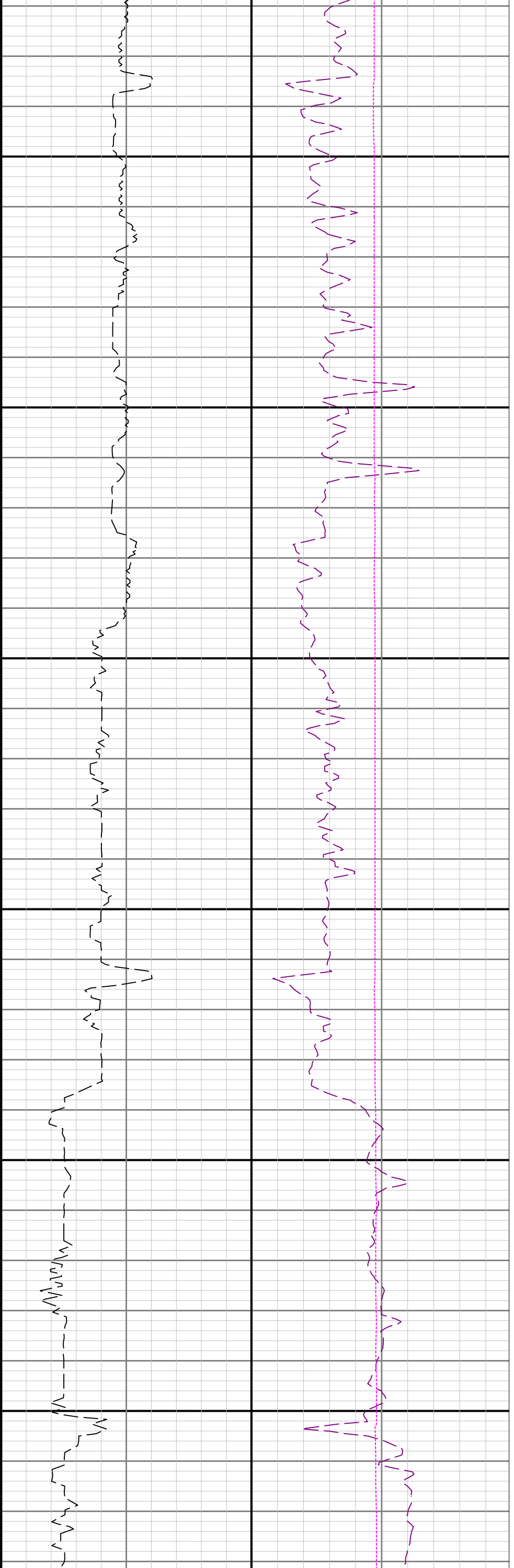


3200

3300

3400

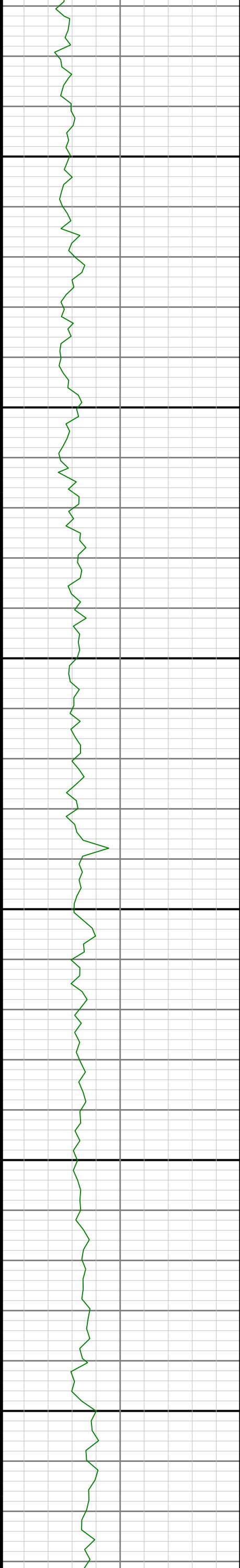


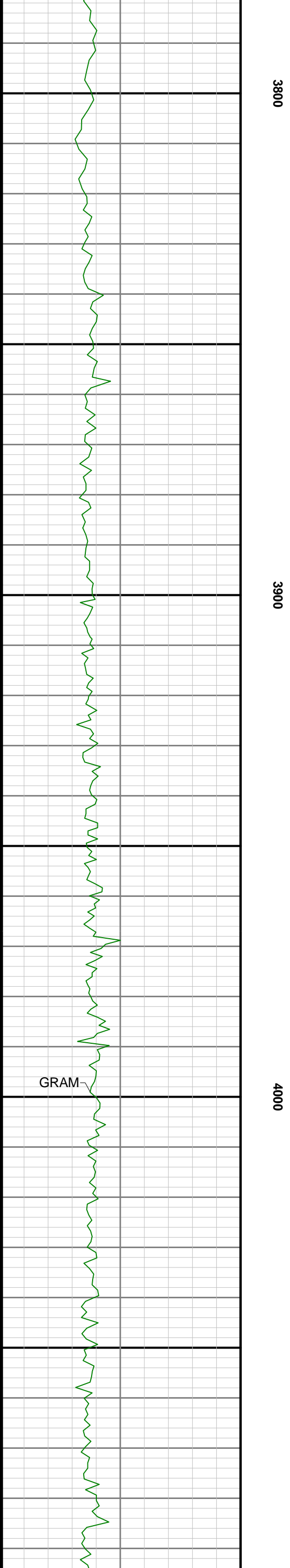
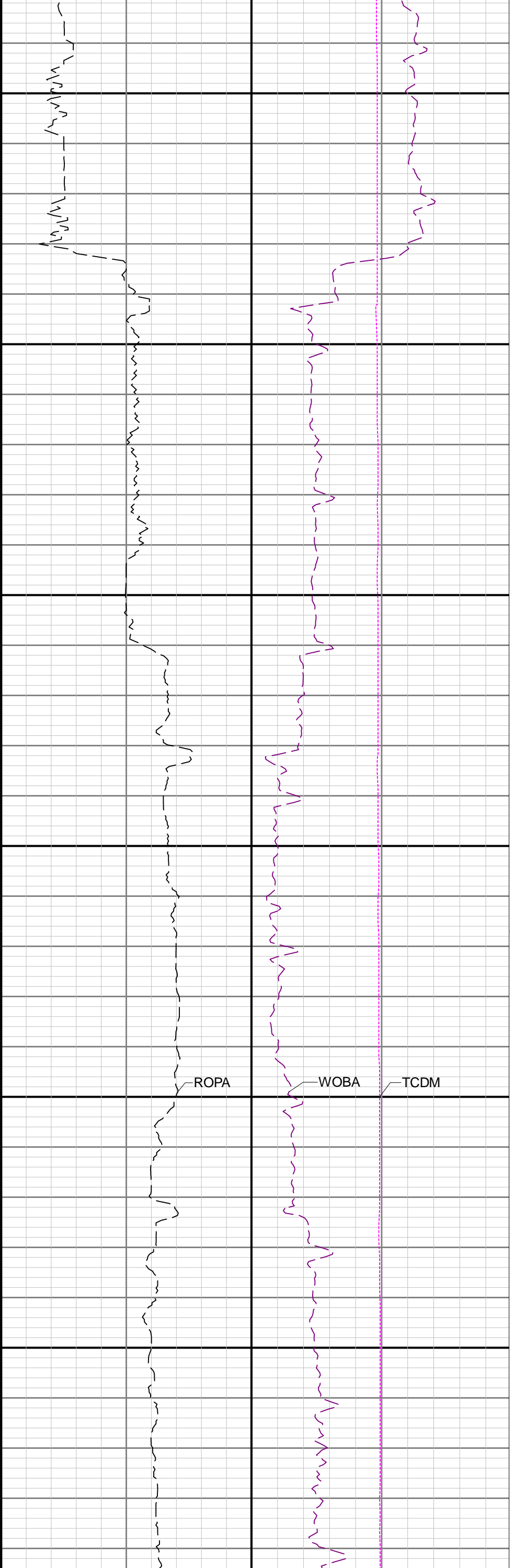


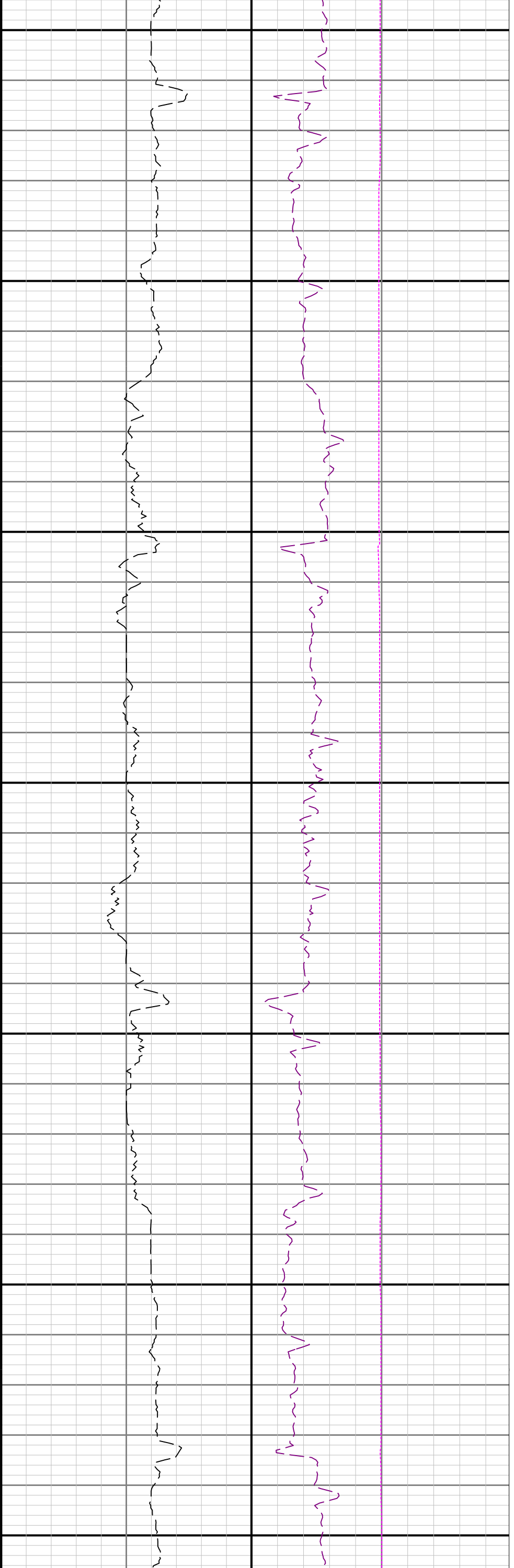
3500

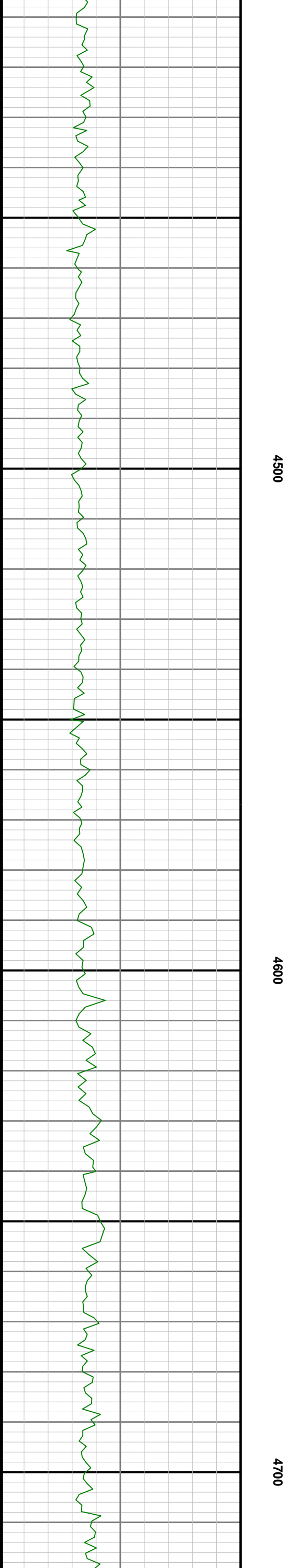
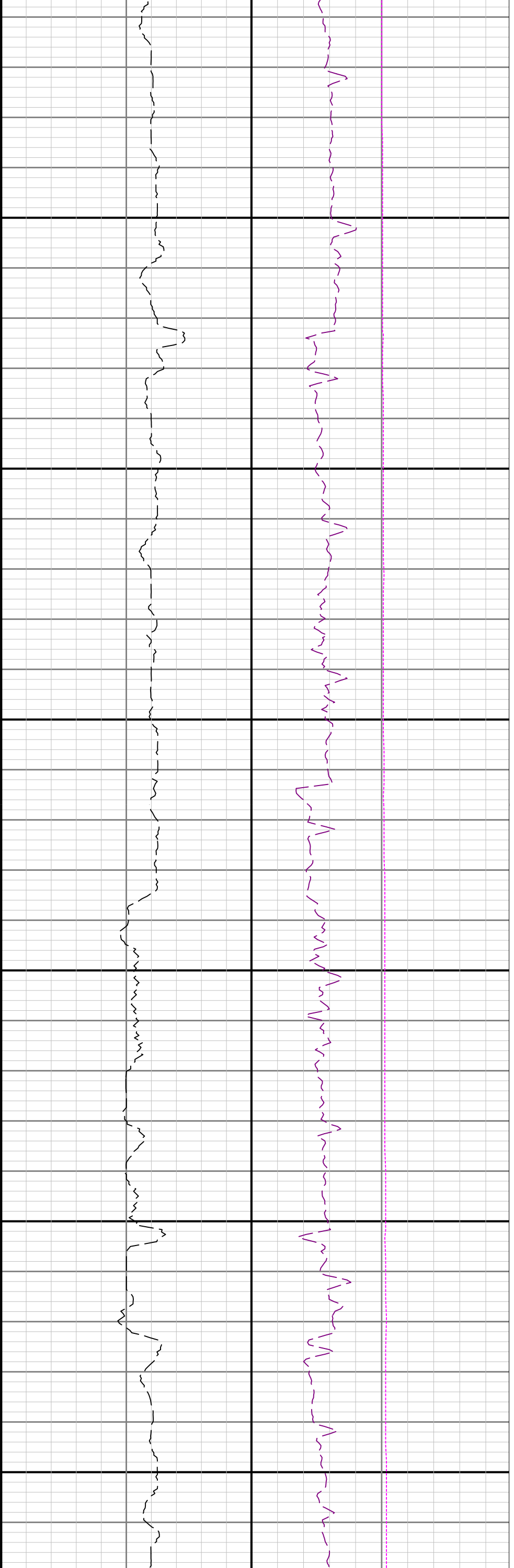
3600

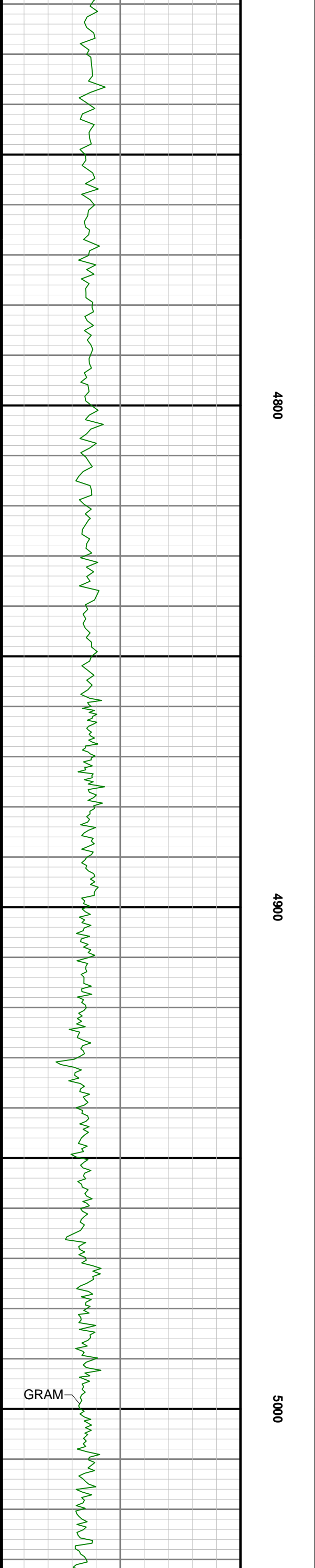
3700

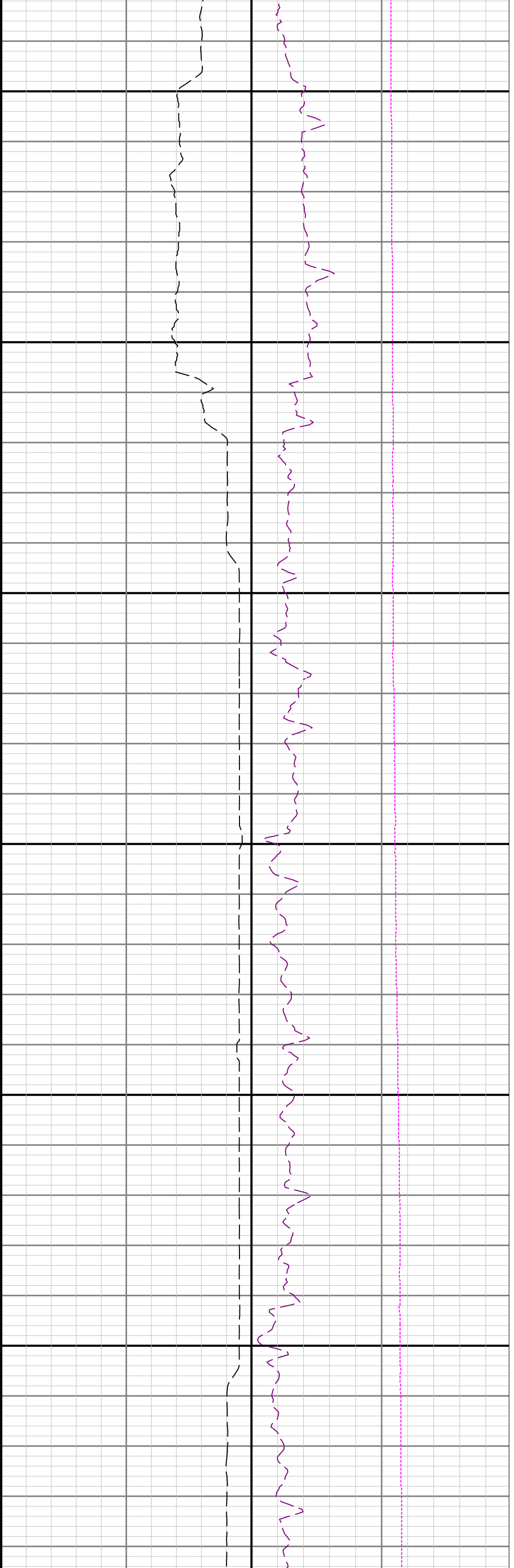








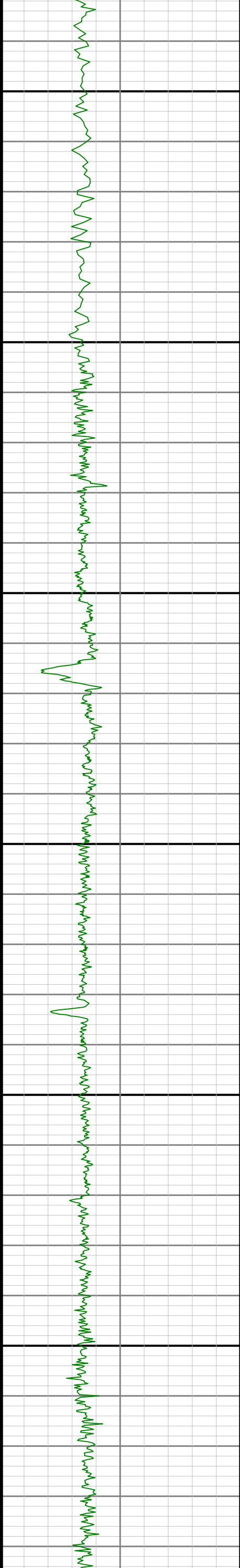


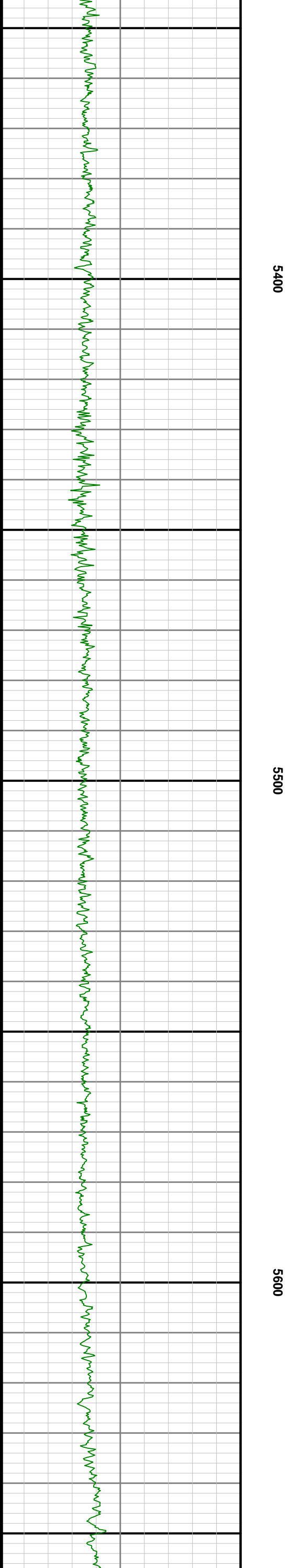
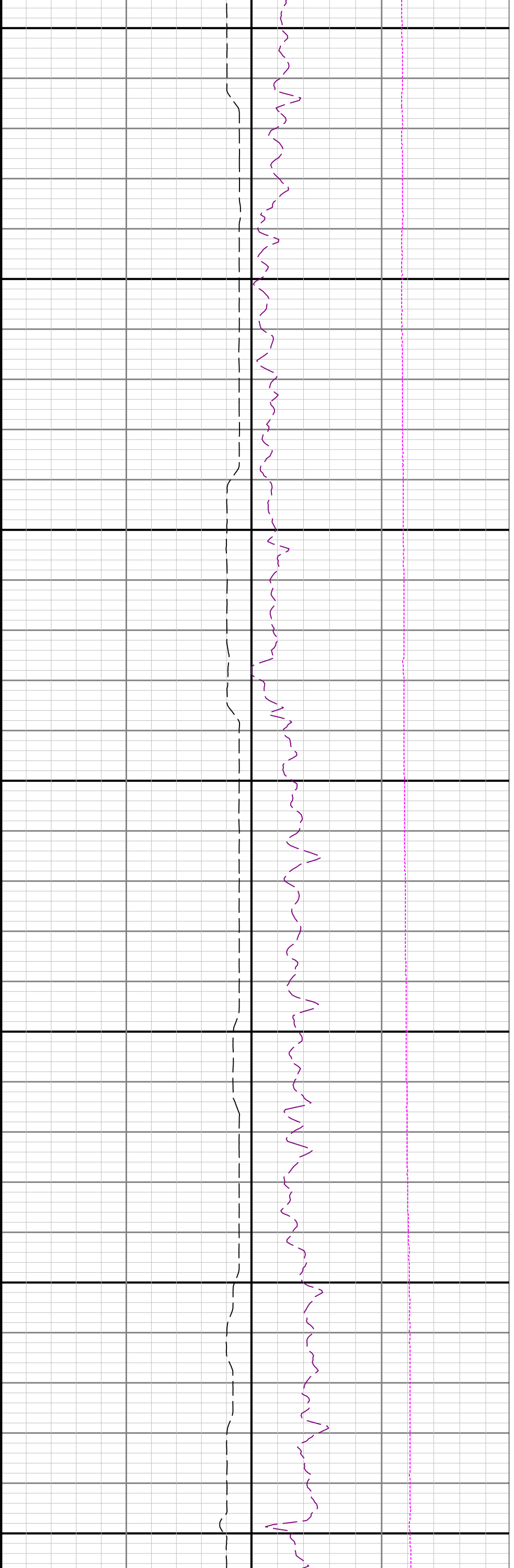


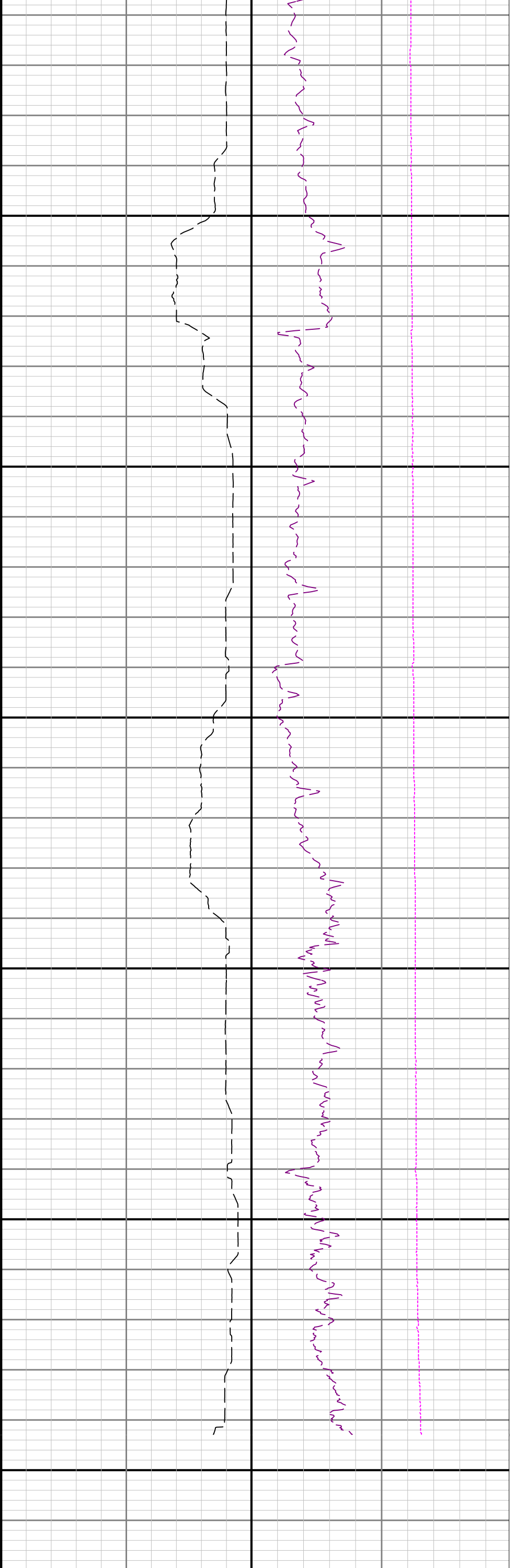
5100

5200

5300





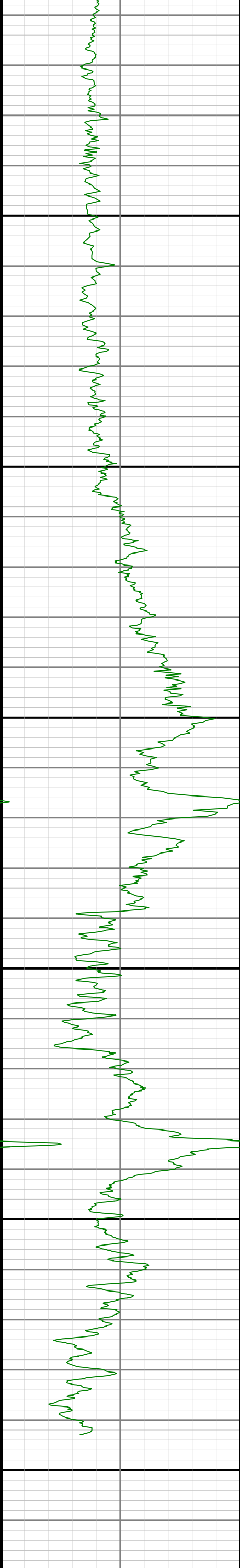


R1<

5700

5800

5900



Gamma Ray - Apparent 0.5 ft Average GRAM	TVD 1:240 feet	Depth Averaged ROP 3 ft Average ROPA	Weight On Bit, Average 1 ft Average WOBA
0300		10000	050
API		ft/h	klb
			Downhole Temperature TCDM
			degF

Directional Survey Summary			
Latitude:	040° 46' 19.416" N	Longitude:	103° 54' 33.012" W
North Reference:	Grid	Drill Depth Zero:	Rig Floor
Vertical Datum is:	Mean Sea Level	Vertical Datum to DDZ: (ft)	4872.00
Vertical Section North: (ft)	0.00	Vertical Section East: (ft)	0.00
Vertical Section Azimuth: (deg)	179.71		
Grid Convergence: (deg)	-1.03	Magnetic Declination: (deg)	7.26
Total Correction: (deg)	6.23	TVD Calculation Method:	Minimum Curvature
Magnetic Correction:	Off	Local Magnetic Field: (nT)	52391
Local Magnetic Dip Angle: (deg)	66.98	Local Gravity Field: (m/s2)	9.801

Tie-In / Projection	Measured Depth (ft)	Inclination (deg)	Azimuth (deg)	Temperature (degF)	North (ft)	East (ft)	True Vertical Depth (ft)	TVD Subsea (ft)	Vertical Section (ft)	Course Length (ft)	Dog Leg Severity (deg/100ft)	Build Rate (deg/100ft)	Turn Rate (deg/100ft)
Tie-In	0.00	0.00	0.00	N/A	0.00	0.00	0.00	-4872.00	0.00	0.00	0.00	0.00	0.00
	78.00	0.78	96.24	N/A	-0.06	0.53	78.00	-4794.00	0.06	78.00	1.00	1.00	123.38
	178.00	0.26	80.89	N/A	-0.10	1.43	177.99	-4694.01	0.10	100.00	0.53	-0.52	-15.35
	269.00	0.28	219.83	N/A	-0.23	1.49	268.99	-4603.01	0.24	91.00	0.56	0.02	152.68
	364.00	0.27	219.47	N/A	-0.58	1.20	363.99	-4508.01	0.59	95.00	0.01	-0.01	-0.38
	458.00	0.55	238.34	N/A	-0.99	0.67	457.99	-4414.01	1.00	94.00	0.33	0.30	20.07
	552.00	0.02	216.15	N/A	-1.24	0.28	551.99	-4320.01	1.24	94.00	0.57	-0.56	-23.61
	647.00	0.11	316.98	N/A	-1.19	0.21	646.99	-4225.01	1.19	95.00	0.12	0.09	106.14
	741.00	0.21	261.72	N/A	-1.15	-0.02	740.99	-4131.01	1.15	94.00	0.18	0.11	-58.79
	835.00	0.34	179.89	N/A	-1.45	-0.19	834.99	-4037.01	1.45	94.00	0.40	0.14	-87.05
	930.00	0.23	141.41	N/A	-1.88	-0.07	929.99	-3942.01	1.88	95.00	0.23	-0.12	-40.51
	1024.00	0.19	216.28	N/A	-2.16	-0.05	1023.98	-3848.02	2.16	94.00	0.27	-0.04	79.65
	1119.00	0.32	143.36	N/A	-2.50	0.02	1118.98	-3753.02	2.50	95.00	0.34	0.14	-76.76
	1213.00	0.33	87.29	N/A	-2.69	0.44	1212.98	-3659.02	2.70	94.00	0.33	0.01	-59.65
	1308.00	0.46	255.32	N/A	-2.78	0.35	1307.98	-3564.02	2.78	95.00	0.83	0.14	176.87
	1402.00	0.34	227.02	N/A	-3.06	-0.22	1401.98	-3470.02	3.06	94.00	0.24	-0.13	-30.11
	1497.00	0.32	274.63	N/A	-3.23	-0.69	1496.98	-3375.02	3.23	95.00	0.28	-0.02	50.12
	1591.00	0.33	267.43	N/A	-3.22	-1.22	1590.98	-3281.02	3.22	94.00	0.04	0.01	-7.66
	1686.00	0.19	292.14	N/A	-3.18	-1.64	1685.98	-3186.02	3.17	95.00	0.19	-0.15	26.01
	1780.00	0.10	29.84	N/A	-3.05	-1.75	1779.98	-3092.02	3.04	94.00	0.24	-0.10	103.94
	1875.00	0.40	308.07	N/A	-2.77	-1.97	1874.97	-2997.03	2.76	95.00	0.42	0.32	-86.07
	1951.00	0.40	293.22	N/A	-2.50	-2.42	1950.97	-2921.03	2.49	76.00	0.14	0.00	-19.54
	1986.00	0.32	33.20	112.2	-2.37	-2.48	1985.97	-2886.03	2.36	35.00	1.58	-0.23	285.66
	2081.00	0.68	50.00	112.2	-1.79	-1.90	2080.97	-2791.03	1.78	95.00	0.41	0.38	17.68
	2175.00	1.20	284.95	117.6	-1.18	-2.42	2174.96	-2697.04	1.16	94.00	1.79	0.55	-133.03
	2270.00	1.64	4.89	117.6	0.43	-3.27	2269.94	-2602.06	-0.45	95.00	1.95	0.46	84.15
	2364.00	3.90	15.08	120.3	4.86	-2.32	2363.83	-2508.17	-4.87	94.00	2.45	2.40	10.84
	2458.00	5.77	20.75	123.0	12.37	0.18	2457.49	-2414.51	-12.37	94.00	2.05	1.99	6.03
	2552.00	8.02	25.88	128.4	22.69	4.72	2550.80	-2321.20	-22.66	94.00	2.48	2.39	5.46
	2647.00	11.16	20.53	131.1	37.26	10.84	2644.46	-2227.54	-37.21	95.00	3.43	3.31	-5.63
	2741.00	14.03	8.85	131.1	57.05	15.78	2736.21	-2135.79	-56.97	94.00	4.07	3.05	-12.43
	2836.00	16.10	0.58	133.8	81.60	17.69	2827.95	-2044.05	-81.51	95.00	3.14	2.18	-8.71
	3025.00	17.55	330.88	136.5	132.80	4.06	3009.19	-1862.81	-132.78	189.00	4.56	0.77	-15.71
	3119.00	15.25	340.34	139.2	156.83	-7.00	3099.37	-1772.63	-156.86	94.00	3.74	-2.45	10.06
	3214.00	16.57	348.27	139.2	181.86	-13.96	3190.74	-1681.26	-181.93	95.00	2.67	1.39	8.35
	3308.00	16.52	335.26	139.2	207.13	-22.28	3280.88	-1591.12	-207.24	94.00	3.93	-0.05	-13.84
	3402.00	17.73	345.37	139.2	233.13	-31.49	3370.73	-1501.27	-233.28	94.00	3.41	1.29	10.76
	3497.00	17.81	336.81	141.9	260.48	-40.86	3461.21	-1410.79	-260.69	95.00	2.75	0.08	-9.01
	3591.00	17.91	338.04	141.9	287.10	-51.93	3550.68	-1321.32	-287.36	94.00	0.42	0.11	1.31
	3686.00	18.17	333.83	141.9	313.94	-63.93	3641.02	-1230.98	-314.26	95.00	1.40	0.27	-4.43
	3780.00	18.35	322.58	144.6	338.86	-79.39	3730.31	-1141.69	-339.26	94.00	3.75	0.19	-11.97
	3875.00	18.18	314.45	144.6	361.12	-99.06	3820.54	-1051.46	-361.61	95.00	2.69	-0.18	-8.56
	4064.00	15.42	310.92	147.3	398.23	-139.10	4001.46	-870.54	-398.93	189.00	1.56	-1.46	-1.87
	4158.00	15.99	337.70	141.9	418.42	-153.47	4092.07	-779.93	-419.19	94.00	7.67	0.61	28.49
	4253.00	17.42	346.04	147.3	444.33	-161.87	4183.07	-688.93	-445.15	95.00	2.93	1.51	8.78
	4347.00	17.77	340.12	147.3	471.48	-170.14	4272.68	-599.32	-472.33	94.00	1.94	0.37	-6.30
	4442.00	16.79	330.89	147.3	497.11	-181.75	4363.41	-508.59	-498.02	95.00	3.06	-1.03	-9.72
	4536.00	16.93	339.92	150.0	521.83	-193.06	4453.39	-418.61	-522.80	94.00	2.79	0.15	9.61
	4630.00	17.43	353.29	152.7	548.67	-199.40	4543.23	-328.77	-549.68	94.00	4.23	0.53	14.22
	4725.00	17.09	6.51	155.4	576.68	-199.48	4633.98	-238.02	-577.69	95.00	4.14	-0.36	13.92
	4819.00	16.95	9.51	155.4	603.92	-195.65	4723.87	-148.13	-604.90	94.00	0.95	-0.15	3.19
	4914.00	17.36	7.58	158.1	631.63	-191.50	4814.64	-57.36	-632.59	95.00	0.74	0.43	-2.03
	5008.00	17.33	1.79	158.1	659.53	-189.21	4904.38	32.38	-660.47	94.00	1.84	-0.03	-6.16
	5103.00	17.21	351.61	160.8	687.58	-190.82	4995.11	123.11	-688.53	95.00	3.18	-0.13	-10.72
	5197.00	17.37	347.04	160.8	715.01	-195.99	5084.87	212.87	-715.99	94.00	1.45	0.17	-4.86
	5292.00	13.85	340.79	166.2	739.58	-202.92	5176.36	304.36	-740.59	95.00	4.10	-3.71	-6.58
	5387.00	6.49	295.72	171.6	752.68	-211.52	5269.93	397.93	-753.74	95.00	10.87	-7.75	-47.44
	5481.00	7.03	222.37	174.3	750.73	-220.20	5363.43	491.43	-751.84	94.00	8.59	0.57	-78.03
	5576.00	15.01	194.30	177.0	734.48	-227.17	5456.66	584.66	-735.62	95.00	9.89	8.40	-29.55
	5670.00	23.04	188.26	179.7	704.43	-232.83	5545.46	673.46	-705.60	94.00	8.78	8.54	-6.43
	5764.00	32.31	183.59	182.5	661.05	-237.05	5628.62	756.62	-662.24	94.00	10.12	9.86	-4.97
	5859.00	40.17	180.71	185.2	604.98	-239.03	5705.19	833.19	-606.19	95.00	8.46	8.27	-3.03
	5954.00	47.63	179.98	185.2	539.16	-239.39	5773.60	901.60	-540.36	95.00	7.87	7.85	-0.77
	6048.00	55.71	180.09	187.9	465.48	-239.44	5831.85	959.85	-466.69	94.00			

		7844.00	90.46	180.90	214.9	-1307.02	-200.05	5939.89	1067.89	1305.99	94.00	0.37	0.33	0.17
		7939.00	90.31	179.27	217.6	-1402.02	-200.19	5939.25	1067.25	1400.99	95.00	1.72	-0.16	-1.72
		8034.00	90.06	180.29	217.6	-1497.01	-199.83	5938.95	1066.95	1495.98	95.00	1.11	-0.26	1.07
		8128.00	90.34	180.18	217.6	-1591.01	-200.22	5938.62	1066.62	1589.98	94.00	0.32	0.30	-0.12
		8223.00	90.12	180.87	220.3	-1686.01	-201.09	5938.24	1066.24	1684.97	95.00	0.76	-0.23	0.73
		8318.00	90.15	180.01	220.3	-1781.00	-201.82	5938.01	1066.01	1779.96	95.00	0.91	0.03	-0.91
		8412.00	90.40	179.37	223.0	-1875.00	-201.31	5937.56	1065.56	1873.96	94.00	0.73	0.27	-0.68
		8506.00	90.92	177.62	223.0	-1968.96	-198.84	5936.48	1064.48	1967.93	94.00	1.94	0.55	-1.86
		8600.00	90.31	175.67	223.0	-2062.79	-193.34	5935.47	1063.47	2061.78	94.00	2.17	-0.65	-2.07
		8695.00	90.80	174.54	223.0	-2157.43	-185.23	5934.55	1062.55	2156.47	95.00	1.30	0.52	-1.19
		8790.00	90.28	174.82	223.0	-2252.02	-176.42	5933.65	1061.65	2251.10	95.00	0.62	-0.55	0.29
		8884.00	89.97	177.66	225.7	-2345.81	-170.26	5933.45	1061.45	2344.92	94.00	3.04	-0.33	3.02
		8979.00	90.86	178.00	225.7	-2440.74	-166.66	5932.76	1060.76	2439.86	95.00	1.00	0.94	0.36
		9073.00	90.37	180.17	228.4	-2534.71	-165.16	5931.75	1059.75	2533.84	94.00	2.37	-0.52	2.31
		9168.00	89.54	181.04	228.4	-2629.71	-166.17	5931.83	1059.83	2628.83	95.00	1.27	-0.87	0.92
		9262.00	90.71	180.01	228.4	-2723.70	-167.03	5931.62	1059.62	2722.82	94.00	1.66	1.24	-1.10
		9356.00	90.95	177.24	231.1	-2817.65	-164.77	5930.26	1058.26	2816.78	94.00	2.96	0.26	-2.95
		9451.00	89.63	176.78	231.1	-2912.52	-159.82	5929.78	1057.78	2911.67	95.00	1.47	-1.39	-0.48
		9545.00	90.25	177.14	233.8	-3006.39	-154.83	5929.88	1057.88	3005.56	94.00	0.76	0.66	0.38
		9640.00	87.78	175.56	233.8	-3101.17	-148.79	5931.51	1059.51	3100.38	95.00	3.09	-2.60	-1.66
		9735.00	88.89	177.61	233.8	-3195.95	-143.13	5934.27	1062.27	3195.19	95.00	2.45	1.17	2.16
		9829.00	90.06	176.93	233.8	-3289.84	-138.65	5935.13	1063.13	3289.10	94.00	1.44	1.24	-0.72
		9923.00	89.57	176.91	233.8	-3383.71	-133.60	5935.44	1063.44	3382.99	94.00	0.52	-0.52	-0.02
		10018.00	90.09	177.92	233.8	-3478.61	-129.32	5935.72	1063.72	3477.91	95.00	1.20	0.55	1.06
		10113.00	90.25	177.22	233.8	-3573.52	-125.29	5935.44	1063.44	3572.84	95.00	0.76	0.17	-0.74
		10207.00	90.00	177.70	236.5	-3667.43	-121.12	5935.23	1063.23	3666.77	94.00	0.58	-0.27	0.51
		10301.00	89.14	177.84	236.5	-3761.35	-117.47	5935.94	1063.94	3760.71	94.00	0.93	-0.91	0.15
		10396.00	89.88	178.14	236.5	-3856.29	-114.14	5936.75	1064.75	3855.66	95.00	0.84	0.78	0.32
		10491.00	90.15	178.07	236.5	-3951.24	-110.99	5936.72	1064.72	3950.63	95.00	0.29	0.28	-0.07
		10585.00	89.97	177.93	239.2	-4045.18	-107.71	5936.63	1064.63	4044.58	94.00	0.24	-0.19	-0.15
		10680.00	90.28	177.83	239.2	-4140.11	-104.20	5936.42	1064.42	4139.53	95.00	0.34	0.33	-0.11
		10774.00	90.18	177.76	239.2	-4234.04	-100.58	5936.04	1064.04	4233.48	94.00	0.13	-0.11	-0.07
		10869.00	90.03	178.17	241.9	-4328.98	-97.21	5935.87	1063.87	4328.44	95.00	0.46	-0.16	0.43
		10963.00	89.69	177.84	241.9	-4422.93	-93.94	5936.10	1064.10	4422.39	94.00	0.50	-0.36	-0.35
		11058.00	90.09	178.41	241.9	-4517.87	-90.83	5936.28	1064.28	4517.36	95.00	0.73	0.42	0.60
		11153.00	91.14	178.51	241.9	-4612.83	-88.28	5935.26	1063.26	4612.33	95.00	1.11	1.11	0.11
		11247.00	90.49	178.61	241.9	-4706.79	-85.91	5933.92	1061.92	4706.30	94.00	0.70	-0.69	0.11
		11341.00	90.12	178.10	241.9	-4800.75	-83.21	5933.42	1061.42	4800.27	94.00	0.67	-0.39	-0.54
		11436.00	90.12	178.85	241.9	-4895.72	-80.69	5933.22	1061.22	4895.25	95.00	0.79	-0.00	0.79
		11531.00	90.09	178.62	241.9	-4990.70	-78.59	5933.05	1061.05	4990.23	95.00	0.24	-0.03	-0.24
		11625.00	90.18	178.21	241.9	-5084.66	-75.99	5932.83	1060.83	5084.21	94.00	0.45	0.10	-0.44
		11720.00	90.09	178.40	241.9	-5179.62	-73.18	5932.60	1060.60	5179.18	95.00	0.22	-0.09	0.20
		11814.00	90.25	178.57	244.6	-5273.58	-70.69	5932.32	1060.32	5273.16	94.00	0.25	0.17	0.18
		11909.00	90.15	178.38	244.6	-5368.55	-68.17	5931.99	1059.99	5368.14	95.00	0.23	-0.11	-0.20
		12003.00	89.78	178.48	244.6	-5462.51	-65.59	5932.05	1060.05	5462.11	94.00	0.41	-0.39	0.11
		12098.00	90.12	178.91	244.6	-5557.49	-63.43	5932.13	1060.13	5557.10	95.00	0.58	0.36	0.45
		12192.00	90.74	178.64	247.3	-5651.46	-61.42	5931.43	1059.43	5651.08	94.00	0.72	0.66	-0.29
		12287.00	91.51	177.72	244.6	-5746.40	-58.40	5929.56	1057.56	5746.03	95.00	1.26	0.81	-0.97
		12382.00	90.18	178.23	244.6	-5841.32	-55.04	5928.16	1056.16	5840.97	95.00	1.50	-1.40	0.54
		12476.00	89.20	177.75	247.3	-5935.26	-51.75	5928.67	1056.67	5934.93	94.00	1.16	-1.04	-0.51
		12571.00	89.32	177.90	247.3	-6030.19	-48.14	5929.90	1057.90	6029.87	95.00	0.20	0.13	0.16
		12665.00	89.78	178.01	244.6	-6124.12	-44.79	5930.64	1058.64	6123.82	94.00	0.50	0.49	0.12
		12760.00	90.25	178.50	244.6	-6219.08	-41.90	5930.61	1058.61	6218.79	95.00	0.71	0.49	0.52
		12855.00	90.18	178.48	247.3	-6314.05	-39.39	5930.25	1058.25	6313.77	95.00	0.08	-0.07	-0.02
		12949.00	89.08	177.89	247.3	-6408.00	-36.42	5930.86	1058.86	6407.73	94.00	1.33	-1.17	-0.63
		13043.00	90.59	178.97	247.3	-6501.96	-33.84	5931.13	1059.13	6501.70	94.00	1.97	1.61	1.15
		13232.00	89.54	179.13	250.0	-6690.93	-30.71	5930.92	1058.92	6690.69	189.00	0.56	-0.56	0.08
		13327.00	92.06	179.72	247.3	-6785.90	-29.75	5929.59	1057.59	6785.67	95.00	2.72	2.65	0.62
		13421.00	90.80	177.85	250.0	-6879.85	-27.76	5927.24	1055.24	6879.62	94.00	2.40	-1.34	-1.99
		13516.00	90.18	178.08	247.3	-6974.78	-24.39	5926.43	1054.43	6974.57	95.00	0.70	-0.65	0.24
		13610.00	90.37	178.76	247.3	-7068.75	-21.80	5925.98	1053.98	7068.55	94.00	0.75	0.20	0.72
		13705.00	89.78	178.31	250.0	-7163.71	-19.37	5925.86	1053.86	7163.53	95.00	0.78	-0.62	-0.47
		13800.00	90.28	177.37	250.0	-7258.65	-15.79	5925.81	1053.81	7258.47	95.00	1.12	0.53	-0.99
		13894.00	90.68	179.28	250.0	-7352.60	-13.04	5925.02	1053.02	7352.44	94.00	2.08	0.43	2.03
		13989.00	90.06	177.29	250.0	-7447.55	-10.20	5924.41	1052.41	7447.40	95.00	2.19	-0.65	-2.09
		14083.00	90.71	178.44	252.7	-7541.48	-6.69	5923.77	1051.77	7541.35	94.00	1.41	0.69	1.22
		14177.00	90.55	178.41	252.7	-7635.44	-4.11	5922.74	1050.74	7635.32	94.00	0.17	-0.17	-0.03
		14272.00	90.22	177.88	252.7	-7730.39	-1.03	5922.10	1050.10	7730.28	95.00	0.66	-0.35	-0.56
		14367.00	90.06	177.86	252.7	-7825.32	2.50	5921.87	1049.87	7825.23	95.00	0.17	-0.17	-0.02
		14461.00	90.83	177.83	252.7	-7919.25	6.03	5921.14	1049.14	7919.18	94.00	0.82	0.82	-0.03
		14556.00	90.03	177.64	255.4	-8014.17	9.78	5920.43	1048.43	8014.12	95.00	0.87	-0.84	-0.20
		14650.00	90.18	178.32	252.7	-8108.11	13.10	5920.26	1048.26	8108.07	94.00	0.74	0.16	0.72
		14745.00	88.77	179.09	250.0	-8203.08	15.24	5921.13	1049.13	8203.05	95.00	1.69	-1.48	0.81
		14840.00	88.03	180.57	252.7	-8298.04	15.53	5923.78	1051.78	8298.01	95.00	1.74	-0.78	1.56
		14934.00	89.91	181.43	252.7	-8392.01	13.89	5925.47	1053.47	8391.97	94.00	2.20	2.00	0.91
		15029.00	90.37	180.00	255.4	-8487.00	12.70	5925.24	1053.24	8486.95	95.00	1.58	0.48	-1.51
		15123.00	89.60	178.97	255.4	-8580.99	13.55	5925.26	1053.26	8580.95	94.00	1.37	-0.82	-1.10
		15218.00	89.91	179.69	255.4	-8675.98	14.66	5925.67	1053.67	8675.94	95.00	0.83	0.33	0.76
		15312.00	90.00	179.97	255.4	-8769.98	14.94	5925.74	1053.74	8769.94	94.00	0.31	0.10	0.30
		15407.00	90.74	178.27	255.4	-8864.96	16.39	5925.13	1053.13	8864.93	95.00	1.95	0.78	-1.79
		15501.00	89.60	178.19	255.4	-8958.92	19.30	5924.85	1052.85	8958.90	94.00	1.22	-1.21	-0.09
		15596.00	89.72	179.27	252.7	-9053.89	21.40	5925.41	1053.41	9053.88	95.00			