

# NOBLE ENERGY, INC

Location: COLORADO Slot: SLOT#06 STRIPES FEDERAL LD18-760 (325'FNL & 2208'FWL,SEC.07)  
Field: WELD COUNTY (NOBLE NAD 83 GRID) Well: STRIPES FEDERAL LD18-760  
Facility: SEC.07-T09N-R58W Wellbore: STRIPES FEDERAL LD18-760 PWB

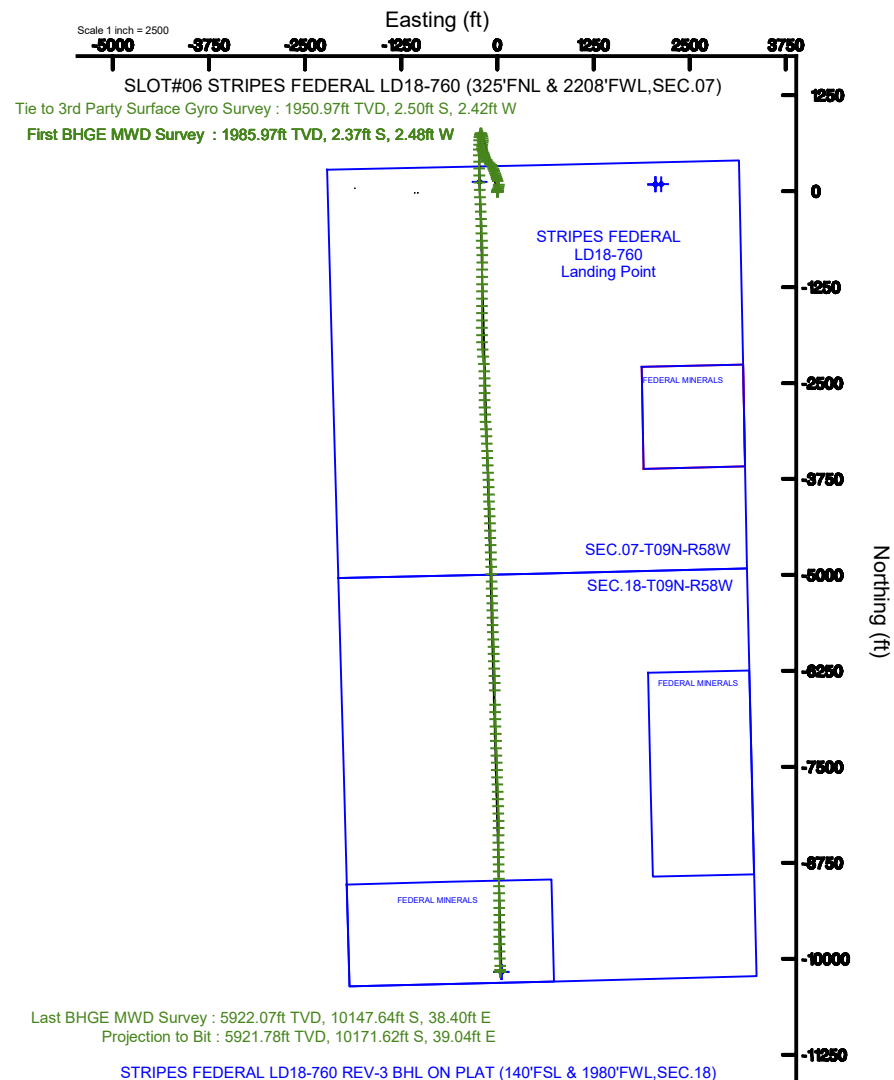
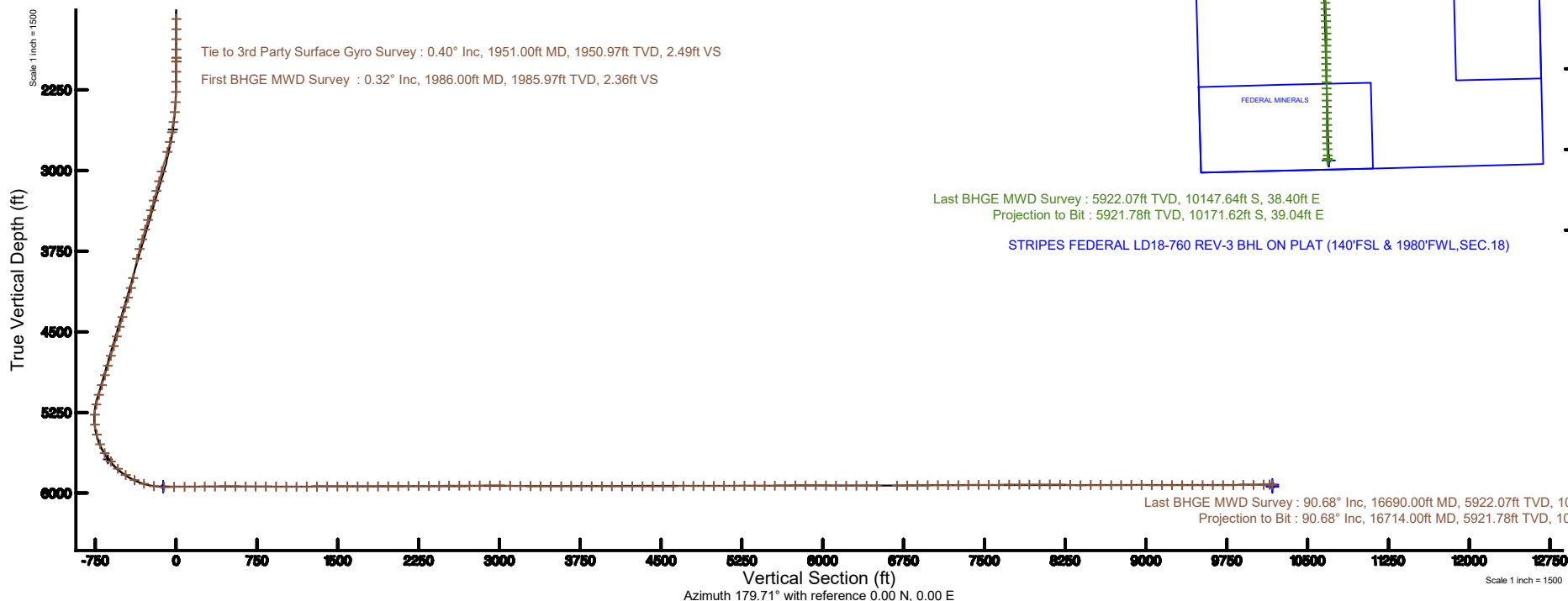
Plot reference wellpath is STRIPES FEDERAL LD18-760 (REV-C.0) PWP	Grid System: NAD83 / Lambert Colorado SP, Northern Zone (501), US feet
True vertical depths are referenced to RIG (30') (RKB)	North Reference: Grid north
Measured depths are referenced to RIG (30') (RKB)	Scale: True distance
RIG (30') (RKB) to Mean Sea Level: 4872 feet	Depths are in feet
Mean Sea Level to Mud line (At Slot: SLOT#06 STRIPES FEDERAL LD18-760 (325'FNL & 2208'FWL,SEC.07)): 0 feet	Created by: doddanna on 2019-08-29
Coordinates are in feet referenced to Slot	Database: WellArchitectDB2

## Location Information

Facility Name			Grid East (US ft)	Grid North (US ft)	Latitude	Longitude
SEC.07-T09N-R58W			3442736.006	1528148.826	40°40'19.920"N	103°54'05.328"W
Slot	Local N (ft)	Local E (ft)	Grid East (US ft)	Grid North (US ft)	Latitude	Longitude
SLOT#06 STRIPES FEDERAL LD18-760 (325'FNL & 2208'FWL,SEC.07)	-89.30	-2128.73	3440607.280	1528059.525	40°40'19.416"N	103°54'33.012"W
RIG (30') (RKB) to Mud line (At Slot: SLOT#06 STRIPES FEDERAL LD18-760 (325'FNL & 2208'FWL,SEC.07))					4872ft	
Mean Sea Level to Mud line (At Slot: SLOT#06 STRIPES FEDERAL LD18-760 (325'FNL & 2208'FWL,SEC.07))					0ft	
RIG (30') (RKB) to Mean Sea Level					4872ft	

## Survey Program

Start MD (ft)	End MD (ft)	Tool	Model	Log Name/Comment	Wellbore
30.00	16763.10	OWSG MWD rev2	OWSG MWD rev2 + IFR1 + Multi-Station Correction		STRIPES FEDERAL LD18-760 PWB



REFERENCE WELLPATH IDENTIFICATION			
Operator	NOBLE ENERGY, INC	Slot	SLOT#06 STRIPES FEDERAL LD18-760 (325'FNL & 2208'FWL,SEC.07)
Area	COLORADO	Well	STRIPES FEDERAL LD18-760
Field	WELD COUNTY (NOBLE NAD 83 GRID)	Wellbore	STRIPES FEDERAL LD18-760 AWB
Facility	SEC.07-T09N-R58W		

REPORT SETUP INFORMATION			
Projection System	NAD83 / Lambert Colorado SP, Northern Zone (501), US feet	Software System	WellArchitect® 5.1
North Reference	Grid	User	Doddanna
Scale	0.999998	Report Generated	8/29/2019 at 1:09:07 PM
Convergence at slot	1.03° East	Database/Source file	WellArchitectDB2/STRIPES_FEDERAL_LD18-760_AWP.xml

WELLPATH LOCATION						
	Local coordinates		Grid coordinates		Geographic coordinates	
	North[ft]	East[ft]	Easting[US ft]	Northing[US ft]	Latitude	Longitude
Slot Location	-89.30	-2128.73	3440607.28	1528059.53	40°46'19.416"N	103°54'33.012"W
Facility Reference Pt			3442736.01	1528148.83	40°46'19.920"N	103°54'05.328"W
Field Reference Pt			3000000.00	4454105.15	48°46'34.315"N	105°30'00.000"W

WELLPATH DATUM			
Calculation method	Minimum curvature	RIG (30') (RKB) to Facility Vertical Datum	4872.00ft
Horizontal Reference Pt	Slot	RIG (30') (RKB) to Mean Sea Level	4872.00ft
Vertical Reference Pt	RIG (30') (RKB)	RIG (30') (RKB) to Mud Line at Slot (SLOT#06 STRIPES FEDERAL LD18-760 (325'FNL & 2208'FWL,SEC.07))	4872.00ft
MD Reference Pt	RIG (30') (RKB)	Section Origin	N 0.00, E 0.00 ft
Field Vertical Reference	Mean Sea Level	Section Azimuth	179.71°

REFERENCE WELLPATH IDENTIFICATION			
Operator	NOBLE ENERGY, INC	Slot	SLOT#06 STRIPES FEDERAL LD18-760 (325'FNL & 2208'FWL,SEC.07)
Area	COLORADO	Well	STRIPES FEDERAL LD18-760
Field	WELD COUNTY (NOBLE NAD 83 GRID)	Wellbore	STRIPES FEDERAL LD18-760 AWB
Facility	SEC.07-T09N-R58W		

WELLPATH DATA (177 stations)										
MD [ft]	Inclination [°]	Azimuth [°]	TVD [ft]	Vert Sect [ft]	North [ft]	East [ft]	Latitude	Longitude	DLS [°/100ft]	Comments
0.00	0.000	96.240	0.00	0.00	0.00	0.00	40°46'19.416"N	103°54'33.012"W	0.00	
78.00	0.780	96.240	78.00	0.06	-0.06	0.53	40°46'19.415"N	103°54'33.005"W	1.00	
178.00	0.260	80.890	177.99	0.10	-0.10	1.43	40°46'19.415"N	103°54'32.993"W	0.53	
269.00	0.280	219.830	268.99	0.24	-0.23	1.49	40°46'19.413"N	103°54'32.993"W	0.56	
364.00	0.270	219.470	363.99	0.59	-0.58	1.20	40°46'19.410"N	103°54'32.997"W	0.01	
458.00	0.550	238.340	457.99	1.00	-0.99	0.67	40°46'19.406"N	103°54'33.003"W	0.33	
552.00	0.020	216.150	551.99	1.24	-1.24	0.28	40°46'19.404"N	103°54'33.009"W	0.57	
647.00	0.110	316.980	646.99	1.19	-1.19	0.21	40°46'19.404"N	103°54'33.010"W	0.12	
741.00	0.210	261.720	740.99	1.15	-1.15	-0.02	40°46'19.405"N	103°54'33.013"W	0.18	
835.00	0.340	179.890	834.99	1.45	-1.45	-0.19	40°46'19.402"N	103°54'33.015"W	0.40	
930.00	0.230	141.410	929.99	1.88	-1.88	-0.07	40°46'19.397"N	103°54'33.013"W	0.23	
1024.00	0.190	216.280	1023.98	2.16	-2.16	-0.05	40°46'19.395"N	103°54'33.013"W	0.27	
1119.00	0.320	143.360	1118.98	2.50	-2.50	0.02	40°46'19.391"N	103°54'33.012"W	0.34	
1213.00	0.330	87.290	1212.98	2.70	-2.69	0.44	40°46'19.389"N	103°54'33.007"W	0.33	
1308.00	0.460	255.320	1307.98	2.78	-2.78	0.35	40°46'19.388"N	103°54'33.008"W	0.83	
1402.00	0.340	227.020	1401.98	3.06	-3.06	-0.22	40°46'19.386"N	103°54'33.016"W	0.24	
1497.00	0.320	274.630	1496.98	3.23	-3.23	-0.69	40°46'19.384"N	103°54'33.022"W	0.28	
1591.00	0.330	267.430	1590.98	3.22	-3.22	-1.22	40°46'19.384"N	103°54'33.029"W	0.04	
1686.00	0.190	292.140	1685.98	3.17	-3.18	-1.64	40°46'19.385"N	103°54'33.034"W	0.19	
1780.00	0.100	29.840	1779.98	3.04	-3.05	-1.75	40°46'19.386"N	103°54'33.035"W	0.24	
1875.00	0.400	308.070	1874.97	2.76	-2.77	-1.97	40°46'19.389"N	103°54'33.038"W	0.42	
1951.00	0.400	293.220	1950.97	2.49	-2.50	-2.42	40°46'19.392"N	103°54'33.044"W	0.14	Tie to 3rd Party Surface Gyro Survey
1986.00	0.320	33.200	1985.97	2.36	-2.37	-2.48	40°46'19.393"N	103°54'33.045"W	1.58	First BHGE MWD Survey
2081.00	0.680	50.000	2080.97	1.78	-1.79	-1.90	40°46'19.399"N	103°54'33.037"W	0.41	
2175.00	1.200	284.950	2174.96	1.16	-1.18	-2.42	40°46'19.405"N	103°54'33.044"W	1.79	
2270.00	1.640	4.890	2269.94	-0.45	0.43	-3.27	40°46'19.421"N	103°54'33.054"W	1.95	
2364.00	3.900	15.080	2363.83	-4.87	4.86	-2.32	40°46'19.464"N	103°54'33.041"W	2.45	
2458.00	5.770	20.750	2457.49	-12.37	12.37	0.18	40°46'19.538"N	103°54'33.007"W	2.05	
2552.00	8.020	25.880	2550.80	-22.66	22.69	4.72	40°46'19.639"N	103°54'32.945"W	2.48	
2647.00	11.160	20.530	2644.46	-37.21	37.26	10.84	40°46'19.782"N	103°54'32.862"W	3.43	

REFERENCE WELLPATH IDENTIFICATION			
Operator	NOBLE ENERGY, INC	Slot	SLOT#06 STRIPES FEDERAL LD18-760 (325'FNL & 2208'FWL,SEC.07)
Area	COLORADO	Well	STRIPES FEDERAL LD18-760
Field	WELD COUNTY (NOBLE NAD 83 GRID)	Wellbore	STRIPES FEDERAL LD18-760 AWB
Facility	SEC.07-T09N-R58W		

WELLPATH DATA (177 stations)										
MD [ft]	Inclination [°]	Azimuth [°]	TVD [ft]	Vert Sect [ft]	North [ft]	East [ft]	Latitude	Longitude	DLS [°/100ft]	Comments
2741.00	14.030	8.850	2736.21	-56.97	57.05	15.78	40°46'19.977"N	103°54'32.794"W	4.07	
2836.00	16.100	0.580	2827.95	-81.51	81.60	17.69	40°46'20.219"N	103°54'32.763"W	3.14	
3025.00	17.550	330.880	3009.19	-132.78	132.80	4.06	40°46'20.727"N	103°54'32.928"W	4.56	
3119.00	15.250	340.340	3099.37	-156.86	156.83	-7.00	40°46'20.967"N	103°54'33.066"W	3.74	
3214.00	16.570	348.270	3190.74	-181.93	181.86	-13.96	40°46'21.215"N	103°54'33.151"W	2.67	
3308.00	16.520	335.260	3280.88	-207.25	207.13	-22.28	40°46'21.466"N	103°54'33.253"W	3.93	
3402.00	17.730	345.370	3370.73	-233.29	233.13	-31.49	40°46'21.725"N	103°54'33.367"W	3.41	
3497.00	17.810	336.810	3461.21	-260.69	260.48	-40.86	40°46'21.997"N	103°54'33.482"W	2.75	
3591.00	17.910	338.040	3550.68	-287.37	287.10	-51.93	40°46'22.262"N	103°54'33.620"W	0.42	
3686.00	18.170	333.830	3641.02	-314.27	313.94	-63.93	40°46'22.529"N	103°54'33.770"W	1.40	
3780.00	18.350	322.580	3730.31	-339.26	338.86	-79.39	40°46'22.778"N	103°54'33.965"W	3.75	
3875.00	18.180	314.450	3820.54	-361.62	361.12	-99.06	40°46'23.001"N	103°54'34.215"W	2.69	
4064.00	15.420	310.920	4001.46	-398.94	398.23	-139.10	40°46'23.375"N	103°54'34.727"W	1.56	
4158.00	15.990	337.700	4092.07	-419.20	418.42	-153.47	40°46'23.577"N	103°54'34.909"W	7.67	
4253.00	17.420	346.040	4183.07	-445.16	444.33	-161.87	40°46'23.834"N	103°54'35.012"W	2.93	
4347.00	17.770	340.120	4272.68	-472.35	471.48	-170.14	40°46'24.104"N	103°54'35.113"W	1.94	
4442.00	16.790	330.890	4363.41	-498.03	497.11	-181.75	40°46'24.359"N	103°54'35.258"W	3.06	
4536.00	16.930	339.920	4453.39	-522.81	521.83	-193.06	40°46'24.606"N	103°54'35.399"W	2.79	
4630.00	17.430	353.290	4543.23	-549.69	548.67	-199.40	40°46'24.872"N	103°54'35.475"W	4.23	
4725.00	17.090	6.510	4633.98	-577.70	576.68	-199.48	40°46'25.149"N	103°54'35.470"W	4.14	
4819.00	16.950	9.510	4723.87	-604.92	603.92	-195.65	40°46'25.417"N	103°54'35.414"W	0.95	
4914.00	17.360	7.580	4814.64	-632.60	631.63	-191.50	40°46'25.690"N	103°54'35.353"W	0.74	
5008.00	17.330	1.790	4904.38	-660.49	659.53	-189.21	40°46'25.965"N	103°54'35.317"W	1.84	
5103.00	17.210	351.610	4995.11	-688.55	687.58	-190.82	40°46'26.243"N	103°54'35.331"W	3.18	
5197.00	17.370	347.040	5084.87	-716.01	715.01	-195.99	40°46'26.515"N	103°54'35.392"W	1.45	
5292.00	13.850	340.790	5176.36	-740.61	739.58	-202.92	40°46'26.759"N	103°54'35.477"W	4.10	
5387.00	6.490	295.720	5269.93	-753.76	752.68	-211.52	40°46'26.890"N	103°54'35.585"W	10.87	
5481.00	7.030	222.370	5363.43	-751.85	750.73	-220.20	40°46'26.872"N	103°54'35.699"W	8.59	
5576.00	15.010	194.300	5456.66	-735.64	734.48	-227.17	40°46'26.712"N	103°54'35.793"W	9.89	
5670.00	23.040	188.260	5545.46	-705.62	704.43	-232.83	40°46'26.417"N	103°54'35.873"W	8.78	

### REFERENCE WELLPATH IDENTIFICATION

Operator	NOBLE ENERGY, INC	Slot	SLOT#06 STRIPES FEDERAL LD18-760 (325'FNL & 2208'FWL,SEC.07)
Area	COLORADO	Well	STRIPES FEDERAL LD18-760
Field	WELD COUNTY (NOBLE NAD 83 GRID)	Wellbore	STRIPES FEDERAL LD18-760 AWP
Facility	SEC.07-T09N-R58W		

### WELLPATH DATA (177 stations)

MD [ft]	Inclination [°]	Azimuth [°]	TVD [ft]	Vert Sect [ft]	North [ft]	East [ft]	Latitude	Longitude	DLS [°/100ft]	Comments
5764.00	32.310	183.590	5628.62	-662.26	661.05	-237.05	40°46'25.989"N	103°54'35.938"W	10.12	
5859.00	40.170	180.710	5705.19	-606.20	604.98	-239.03	40°46'25.435"N	103°54'35.977"W	8.46	
5954.00	47.630	179.980	5773.60	-540.38	539.16	-239.39	40°46'24.785"N	103°54'35.997"W	7.87	
6048.00	55.710	180.090	5831.85	-466.71	465.48	-239.44	40°46'24.057"N	103°54'36.015"W	8.60	
6143.00	63.710	179.520	5879.72	-384.74	383.52	-239.15	40°46'23.247"N	103°54'36.030"W	8.44	
6237.00	73.060	178.930	5914.31	-297.45	296.23	-237.95	40°46'22.385"N	103°54'36.035"W	9.96	
6332.00	81.620	178.120	5935.11	-204.87	203.66	-235.56	40°46'21.470"N	103°54'36.026"W	9.05	
6426.00	89.200	178.100	5942.63	-111.28	110.08	-232.47	40°46'20.545"N	103°54'36.007"W	8.06	
6520.00	90.920	178.960	5942.53	-17.30	16.12	-230.06	40°46'19.616"N	103°54'35.998"W	2.05	
6615.00	90.120	177.520	5941.67	77.66	-78.83	-227.14	40°46'18.677"N	103°54'35.982"W	1.73	
6710.00	90.800	176.230	5940.91	172.54	-173.68	-221.96	40°46'17.739"N	103°54'35.937"W	1.53	
6804.00	90.830	176.800	5939.57	266.38	-267.50	-216.25	40°46'16.812"N	103°54'35.885"W	0.61	
6899.00	91.050	178.300	5938.01	361.30	-362.40	-212.19	40°46'15.873"N	103°54'35.854"W	1.60	
6994.00	90.030	178.670	5937.11	456.27	-457.36	-209.68	40°46'14.935"N	103°54'35.843"W	1.14	
7088.00	89.750	177.910	5937.30	550.25	-551.32	-206.87	40°46'14.006"N	103°54'35.829"W	0.86	
7183.00	89.480	176.580	5937.93	645.15	-646.20	-202.31	40°46'13.068"N	103°54'35.792"W	1.43	
7277.00	89.480	177.980	5938.79	739.06	-740.09	-197.84	40°46'12.139"N	103°54'35.755"W	1.49	
7371.00	89.480	179.790	5939.64	833.05	-834.06	-196.02	40°46'11.211"N	103°54'35.754"W	1.93	
7466.00	89.910	181.080	5940.15	928.03	-929.06	-196.74	40°46'10.272"N	103°54'35.785"W	1.43	
7560.00	89.820	181.030	5940.37	1022.01	-1023.04	-198.47	40°46'09.344"N	103°54'35.830"W	0.11	
7655.00	90.000	179.260	5940.52	1117.00	-1118.04	-198.71	40°46'08.406"N	103°54'35.855"W	1.87	
7750.00	90.150	180.740	5940.39	1212.00	-1213.03	-198.71	40°46'07.467"N	103°54'35.877"W	1.57	
7844.00	90.460	180.900	5939.89	1305.98	-1307.02	-200.05	40°46'06.539"N	103°54'35.916"W	0.37	
7939.00	90.310	179.270	5939.25	1400.97	-1402.02	-200.19	40°46'05.600"N	103°54'35.940"W	1.72	
8034.00	90.060	180.290	5938.95	1495.97	-1497.01	-199.83	40°46'04.662"N	103°54'35.958"W	1.11	
8128.00	90.340	180.180	5938.62	1589.96	-1591.01	-200.22	40°46'03.733"N	103°54'35.985"W	0.32	
8223.00	90.120	180.870	5938.24	1684.95	-1686.01	-201.09	40°46'02.795"N	103°54'36.018"W	0.76	
8318.00	90.150	180.010	5938.01	1779.94	-1781.00	-201.82	40°46'01.856"N	103°54'36.050"W	0.91	
8412.00	90.400	179.370	5937.56	1873.94	-1875.00	-201.31	40°46'00.928"N	103°54'36.065"W	0.73	
8506.00	90.920	177.620	5936.48	1967.91	-1968.96	-198.84	40°45'59.999"N	103°54'36.055"W	1.94	

REFERENCE WELLPATH IDENTIFICATION			
Operator	NOBLE ENERGY, INC	Slot	SLOT#06 STRIPES FEDERAL LD18-760 (325'FNL & 2208'FWL,SEC.07)
Area	COLORADO	Well	STRIPES FEDERAL LD18-760
Field	WELD COUNTY (NOBLE NAD 83 GRID)	Wellbore	STRIPES FEDERAL LD18-760 AWP
Facility	SEC.07-T09N-R58W		

WELLPATH DATA (177 stations)										
MD [ft]	Inclination [°]	Azimuth [°]	TVD [ft]	Vert Sect [ft]	North [ft]	East [ft]	Latitude	Longitude	DLS [°/100ft]	Comments
8600.00	90.310	175.670	5935.47	2061.77	-2062.79	-193.34	40°45'59.071"N	103°54'36.005"W	2.17	
8695.00	90.800	174.540	5934.55	2156.45	-2157.43	-185.23	40°45'58.135"N	103°54'35.922"W	1.30	
8790.00	90.280	174.820	5933.65	2251.08	-2252.02	-176.42	40°45'57.199"N	103°54'35.829"W	0.62	
8884.00	89.970	177.660	5933.45	2344.90	-2345.81	-170.26	40°45'56.271"N	103°54'35.771"W	3.04	
8979.00	90.860	178.000	5932.76	2439.85	-2440.74	-166.66	40°45'55.332"N	103°54'35.747"W	1.00	
9073.00	90.370	180.170	5931.75	2533.83	-2534.71	-165.16	40°45'54.404"N	103°54'35.749"W	2.37	
9168.00	89.540	181.040	5931.83	2628.82	-2629.71	-166.17	40°45'53.465"N	103°54'35.784"W	1.27	
9262.00	90.710	180.010	5931.62	2722.80	-2723.70	-167.03	40°45'52.537"N	103°54'35.817"W	1.66	
9356.00	90.950	177.240	5930.26	2816.77	-2817.65	-164.77	40°45'51.608"N	103°54'35.810"W	2.96	
9451.00	89.630	176.780	5929.78	2911.66	-2912.52	-159.82	40°45'50.670"N	103°54'35.768"W	1.47	
9545.00	90.250	177.140	5929.88	3005.55	-3006.39	-154.83	40°45'49.742"N	103°54'35.725"W	0.76	
9640.00	87.780	175.560	5931.51	3100.36	-3101.17	-148.79	40°45'48.805"N	103°54'35.668"W	3.09	
9735.00	88.890	177.610	5934.27	3195.18	-3195.95	-143.13	40°45'47.867"N	103°54'35.617"W	2.45	
9829.00	90.060	176.930	5935.13	3289.09	-3289.84	-138.65	40°45'46.939"N	103°54'35.581"W	1.44	
9923.00	89.570	176.910	5935.44	3382.97	-3383.71	-133.60	40°45'46.011"N	103°54'35.537"W	0.52	
10018.00	90.090	177.920	5935.72	3477.90	-3478.61	-129.32	40°45'45.072"N	103°54'35.503"W	1.20	
10113.00	90.250	177.220	5935.44	3572.83	-3573.52	-125.29	40°45'44.134"N	103°54'35.473"W	0.76	
10207.00	90.000	177.700	5935.23	3666.76	-3667.43	-121.12	40°45'43.205"N	103°54'35.441"W	0.58	
10301.00	89.140	177.840	5935.94	3760.70	-3761.35	-117.47	40°45'42.277"N	103°54'35.415"W	0.93	
10396.00	89.880	178.140	5936.75	3855.65	-3856.29	-114.14	40°45'41.338"N	103°54'35.394"W	0.84	
10491.00	90.150	178.070	5936.72	3950.62	-3951.24	-110.99	40°45'40.400"N	103°54'35.375"W	0.29	
10585.00	89.970	177.930	5936.63	4044.57	-4045.18	-107.71	40°45'39.471"N	103°54'35.355"W	0.24	
10680.00	90.280	177.830	5936.42	4139.52	-4140.11	-104.20	40°45'38.533"N	103°54'35.331"W	0.34	
10774.00	90.180	177.760	5936.04	4233.47	-4234.04	-100.58	40°45'37.604"N	103°54'35.306"W	0.13	
10869.00	90.030	178.170	5935.87	4328.43	-4328.98	-97.21	40°45'36.665"N	103°54'35.284"W	0.46	
10963.00	89.690	177.840	5936.10	4422.39	-4422.93	-93.94	40°45'35.737"N	103°54'35.264"W	0.50	
11058.00	90.090	178.410	5936.28	4517.35	-4517.87	-90.83	40°45'34.798"N	103°54'35.245"W	0.73	
11153.00	91.140	178.510	5935.26	4612.32	-4612.83	-88.28	40°45'33.859"N	103°54'35.234"W	1.11	
11247.00	90.490	178.610	5933.92	4706.29	-4706.79	-85.91	40°45'32.931"N	103°54'35.225"W	0.70	
11341.00	90.120	178.100	5933.42	4800.26	-4800.75	-83.21	40°45'32.002"N	103°54'35.212"W	0.67	

REFERENCE WELLPATH IDENTIFICATION			
Operator	NOBLE ENERGY, INC	Slot	SLOT#06 STRIPES FEDERAL LD18-760 (325'FNL & 2208'FWL,SEC.07)
Area	COLORADO	Well	STRIPES FEDERAL LD18-760
Field	WELD COUNTY (NOBLE NAD 83 GRID)	Wellbore	STRIPES FEDERAL LD18-760 AWP
Facility	SEC.07-T09N-R58W		

WELLPATH DATA (177 stations)										
MD [ft]	Inclination [°]	Azimuth [°]	TVD [ft]	Vert Sect [ft]	North [ft]	East [ft]	Latitude	Longitude	DLS [°/100ft]	Comments
11436.00	90.120	178.850	5933.22	4895.24	-4895.72	-80.69	40°45'31.063"N	103°54'35.202"W	0.79	
11531.00	90.090	178.620	5933.05	4990.23	-4990.70	-78.59	40°45'30.125"N	103°54'35.196"W	0.24	
11625.00	90.180	178.210	5932.83	5084.20	-5084.66	-75.99	40°45'29.196"N	103°54'35.185"W	0.45	
11720.00	90.090	178.400	5932.60	5179.17	-5179.62	-73.18	40°45'28.257"N	103°54'35.170"W	0.22	
11814.00	90.250	178.570	5932.32	5273.15	-5273.58	-70.69	40°45'27.329"N	103°54'35.160"W	0.25	
11909.00	90.150	178.380	5931.99	5368.13	-5368.55	-68.17	40°45'26.390"N	103°54'35.149"W	0.23	
12003.00	89.780	178.480	5932.05	5462.11	-5462.51	-65.59	40°45'25.461"N	103°54'35.138"W	0.41	
12098.00	90.120	178.910	5932.13	5557.09	-5557.49	-63.43	40°45'24.522"N	103°54'35.132"W	0.58	
12192.00	90.740	178.640	5931.43	5651.07	-5651.46	-61.42	40°45'23.594"N	103°54'35.127"W	0.72	
12287.00	91.510	177.720	5929.56	5746.02	-5746.40	-58.40	40°45'22.655"N	103°54'35.110"W	1.26	
12382.00	90.180	178.230	5928.16	5840.96	-5841.32	-55.04	40°45'21.717"N	103°54'35.089"W	1.50	
12476.00	89.200	177.750	5928.67	5934.92	-5935.26	-51.75	40°45'20.788"N	103°54'35.068"W	1.16	
12571.00	89.320	177.900	5929.90	6029.86	-6030.19	-48.14	40°45'19.850"N	103°54'35.043"W	0.20	
12665.00	89.780	178.010	5930.64	6123.81	-6124.12	-44.79	40°45'18.921"N	103°54'35.021"W	0.50	
12760.00	90.250	178.500	5930.61	6218.78	-6219.08	-41.90	40°45'17.982"N	103°54'35.006"W	0.71	
12855.00	90.180	178.480	5930.25	6313.76	-6314.05	-39.39	40°45'17.044"N	103°54'34.996"W	0.08	
12949.00	89.080	177.890	5930.86	6407.72	-6408.00	-36.42	40°45'16.115"N	103°54'34.979"W	1.33	
13043.00	90.590	178.970	5931.13	6501.70	-6501.96	-33.84	40°45'15.186"N	103°54'34.967"W	1.97	
13232.00	89.540	179.130	5930.92	6690.68	-6690.93	-30.71	40°45'13.319"N	103°54'34.971"W	0.56	
13327.00	92.060	179.720	5929.59	6785.66	-6785.90	-29.75	40°45'12.380"N	103°54'34.980"W	2.72	
13421.00	90.800	177.850	5927.24	6879.61	-6879.85	-27.76	40°45'11.452"N	103°54'34.976"W	2.40	
13516.00	90.180	178.080	5926.43	6974.57	-6974.78	-24.39	40°45'10.513"N	103°54'34.955"W	0.70	
13610.00	90.370	178.760	5925.98	7068.54	-7068.75	-21.80	40°45'09.585"N	103°54'34.943"W	0.75	
13705.00	89.780	178.310	5925.86	7163.52	-7163.71	-19.37	40°45'08.646"N	103°54'34.933"W	0.78	
13800.00	90.280	177.370	5925.81	7258.47	-7258.65	-15.79	40°45'07.707"N	103°54'34.909"W	1.12	
13894.00	90.680	179.280	5925.02	7352.43	-7352.60	-13.04	40°45'06.779"N	103°54'34.895"W	2.08	
13989.00	90.060	177.290	5924.41	7447.40	-7447.55	-10.20	40°45'05.840"N	103°54'34.880"W	2.19	
14083.00	90.710	178.440	5923.77	7541.34	-7541.48	-6.69	40°45'04.912"N	103°54'34.857"W	1.41	
14177.00	90.550	178.410	5922.74	7635.32	-7635.44	-4.11	40°45'03.983"N	103°54'34.845"W	0.17	
14272.00	90.220	177.880	5922.10	7730.28	-7730.39	-1.03	40°45'03.044"N	103°54'34.827"W	0.66	

### REFERENCE WELLPATH IDENTIFICATION

Operator	NOBLE ENERGY, INC	Slot	SLOT#06 STRIPES FEDERAL LD18-760 (325'FNL & 2208'FWL, SEC.07)
Area	COLORADO	Well	STRIPES FEDERAL LD18-760
Field	WELD COUNTY (NOBLE NAD 83 GRID)	Wellbore	STRIPES FEDERAL LD18-760 AWB
Facility	SEC.07-T09N-R58W		

### WELLPATH DATA (177 stations)

MD [ft]	Inclination [°]	Azimuth [°]	TVD [ft]	Vert Sect [ft]	North [ft]	East [ft]	Latitude	Longitude	DLS [°/100ft]	Comments
14367.00	90.060	177.860	5921.87	7825.23	-7825.32	2.50	40°45'02.106"N	103°54'34.804"W	0.17	
14461.00	90.830	177.830	5921.14	7919.18	-7919.25	6.03	40°45'01.177"N	103°54'34.779"W	0.82	
14556.00	90.030	177.640	5920.43	8014.12	-8014.17	9.78	40°45'00.239"N	103°54'34.753"W	0.87	
14650.00	90.180	178.320	5920.26	8108.07	-8108.11	13.10	40°44'59.310"N	103°54'34.732"W	0.74	
14745.00	88.770	179.090	5921.13	8203.05	-8203.08	15.25	40°44'58.371"N	103°54'34.726"W	1.69	
14840.00	88.030	180.570	5923.78	8298.01	-8298.04	15.53	40°44'57.433"N	103°54'34.744"W	1.74	
14934.00	89.910	181.430	5925.47	8391.97	-8392.01	13.89	40°44'56.505"N	103°54'34.788"W	2.20	
15029.00	90.370	180.000	5925.24	8486.95	-8487.00	12.70	40°44'55.567"N	103°54'34.825"W	1.58	
15123.00	89.600	178.970	5925.26	8580.95	-8580.99	13.55	40°44'54.638"N	103°54'34.836"W	1.37	
15218.00	89.910	179.690	5925.67	8675.94	-8675.98	14.66	40°44'53.699"N	103°54'34.844"W	0.83	
15312.00	90.000	179.970	5925.74	8769.94	-8769.98	14.94	40°44'52.771"N	103°54'34.862"W	0.31	
15407.00	90.740	178.270	5925.13	8864.93	-8864.96	16.39	40°44'51.832"N	103°54'34.865"W	1.95	
15501.00	89.600	178.190	5924.85	8958.90	-8958.92	19.30	40°44'50.903"N	103°54'34.849"W	1.22	
15596.00	89.720	179.270	5925.41	9053.88	-9053.89	21.40	40°44'49.965"N	103°54'34.844"W	1.14	
15690.00	89.880	179.690	5925.74	9147.88	-9147.89	22.26	40°44'49.036"N	103°54'34.855"W	0.48	
15784.00	89.510	179.540	5926.24	9241.88	-9241.88	22.89	40°44'48.107"N	103°54'34.869"W	0.42	
15879.00	90.000	179.150	5926.65	9336.87	-9336.87	23.97	40°44'47.169"N	103°54'34.877"W	0.66	
15973.00	90.000	179.930	5926.65	9430.87	-9430.87	24.73	40°44'46.240"N	103°54'34.889"W	0.83	
16068.00	90.460	179.460	5926.27	9525.87	-9525.87	25.23	40°44'45.301"N	103°54'34.904"W	0.69	
16163.00	89.850	179.610	5926.01	9620.87	-9620.86	26.01	40°44'44.363"N	103°54'34.916"W	0.66	
16257.00	90.000	179.960	5926.13	9714.87	-9714.86	26.36	40°44'43.434"N	103°54'34.934"W	0.41	
16352.00	90.830	179.190	5925.44	9809.87	-9809.86	27.06	40°44'42.495"N	103°54'34.947"W	1.19	
16446.00	90.800	178.190	5924.11	9903.84	-9903.82	29.21	40°44'41.566"N	103°54'34.941"W	1.06	
16541.00	90.590	177.890	5922.95	9998.79	-9998.76	32.46	40°44'40.628"N	103°54'34.921"W	0.39	
16635.00	90.060	177.330	5922.42	10092.73	-10092.67	36.38	40°44'39.699"N	103°54'34.892"W	0.82	
16690.00	90.680	178.470	5922.07	10147.70	-10147.64	38.40	40°44'39.156"N	103°54'34.878"W	2.36	Last BHGE MWD Survey
16714.00	90.680	178.470	5921.78	10171.69	-10171.62	39.04	40°44'38.919"N	103°54'34.876"W	0.00	Projection to Bit

REFERENCE WELLPATH IDENTIFICATION			
Operator	NOBLE ENERGY, INC	Slot	SLOT#06 STRIPES FEDERAL LD18-760 (325'FNL & 2208'FWL,SEC.07)
Area	COLORADO	Well	STRIPES FEDERAL LD18-760
Field	WELD COUNTY (NOBLE NAD 83 GRID)	Wellbore	STRIPES FEDERAL LD18-760 AWB
Facility	SEC.07-T09N-R58W		

TARGETS								
Name	TVD [ft]	North [ft]	East [ft]	Grid East [US ft]	Grid North [US ft]	Latitude	Longitude	Shape
SEC.07-T09N-R58W FED MIN 1	-23.00	87.95	2053.96	3442661.23	1528147.48	40°46'19.920"N	103°54'06.300"W	polygon
SEC.18-T09N-R58W FED MINS 1	-23.00	87.95	2053.96	3442661.23	1528147.48	40°46'19.920"N	103°54'06.300"W	polygon
SEC.18-T09N-R58W FED MINS 2	-23.00	87.95	2053.96	3442661.23	1528147.48	40°46'19.920"N	103°54'06.300"W	polygon
SEC.18-T09N-R58W	48.00	887.34	6953.87	3447561.13	1528946.86	40°46'26.940"N	103°53'02.436"W	polygon
SEC.07-T09N-R58W	49.00	89.30	2128.73	3442736.01	1528148.83	40°46'19.920"N	103°54'05.328"W	polygon
STRIPES FEDERAL LD18-760 REV-3 BHL ON PLAT (140'FSL & 1980'FWL,SEC.18)	5922.03	-10172.90	52.27	3440659.54	1517886.66	40°44'38.904"N	103°54'34.704"W	point
STRIPES FEDERAL LD18-760 BHL ON PLAT (140'FSL & 1980'FWL,SEC.18)	5936.08	-10172.90	52.27	3440659.54	1517886.66	40°44'38.904"N	103°54'34.704"W	point
STRIPES FEDERAL LD18-760 Landing Point	5940.00	120.28	-231.20	3440376.08	1528179.80	40°46'20.645"N	103°54'35.988"W	point
STRIPES FEDERAL LD18-760 REV-2 BHL ON PLAT (140'FSL & 1980'FWL,SEC.18)	5942.03	-10172.90	52.27	3440659.54	1517886.66	40°44'38.904"N	103°54'34.704"W	point

WELLPATH COMPOSITION - Ref Wellbore: STRIPES FEDERAL LD18-760 AWB					Ref Wellpath: STRIPES FEDERAL LD18-760 AWP
Start MD [ft]	End MD [ft]	Positional Uncertainty Model	Log Name/Comment		Wellbore
0.00	1951.00	BHI Generic gyro - northseeking (Standard)	3rd Party Surface Gyros <78'-1951'>		STRIPES FEDERAL LD18-760 AWB
1951.00	16690.00	OWSG MWD rev2 + IFR1 + Axial Corr	BH/ATC OWSG MWD rev2+IFR1+MSA <1986'-16690'>		STRIPES FEDERAL LD18-760 AWB
16690.00	16714.00	Blind Drilling (std)	Projection to bit		STRIPES FEDERAL LD18-760 AWB

REFERENCE WELLPATH IDENTIFICATION			
Operator	NOBLE ENERGY, INC	Slot	SLOT#06 STRIPES FEDERAL LD18-760 (325'FNL & 2208'FWL,SEC.07)
Area	COLORADO	Well	STRIPES FEDERAL LD18-760
Field	WELD COUNTY (NOBLE NAD 83 GRID)	Wellbore	STRIPES FEDERAL LD18-760 AWB
Facility	SEC.07-T09N-R58W		

WELLPATH COMMENTS				
MD [ft]	Inclination [°]	Azimuth [°]	TVD [ft]	Comment
1951.00	0.400	293.220	1950.97	Tie to 3rd Party Surface Gyro Survey
1986.00	0.320	33.200	1985.97	First BHGE MWD Survey
16690.00	90.680	178.470	5922.07	Last BHGE MWD Survey
16714.00	90.680	178.470	5921.78	Projection to Bit