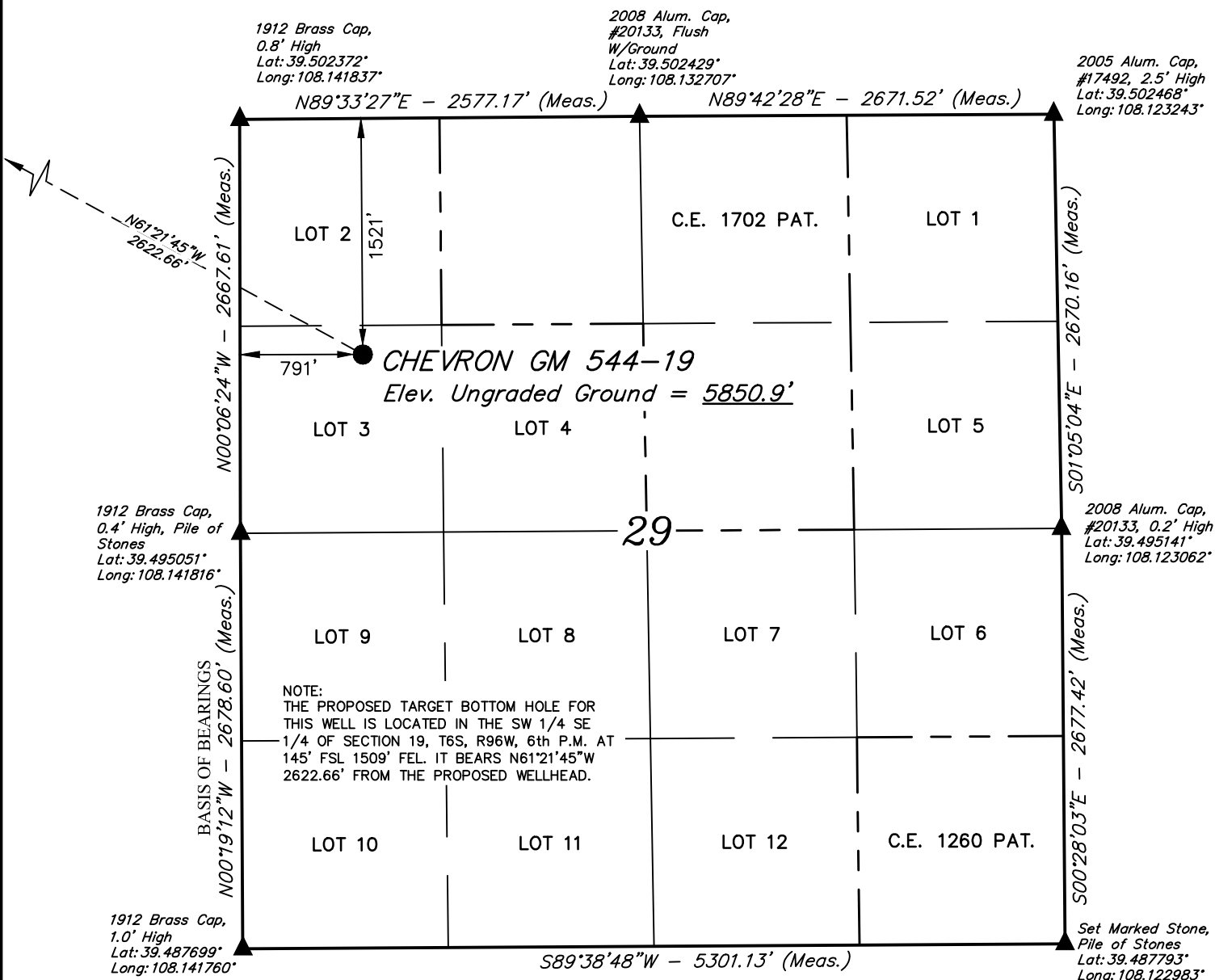


LEGEND:

- = PROPOSED WELLHEAD.
 ▲ = SECTION CORNERS LOCATED. (NAD 83)

T6S, R96W, 6th P.M.



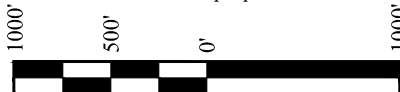
PDOP = 2.1

NAD 83 (SURFACE LOCATION)

LATITUDE = 39°29'53.57" (39.498215)
 LONGITUDE = 108°08'20.48" (108.139024)
 STATE PLANE NAD 83 (CO. CEN.)
 N: 1617169.51 E: 2255394.48

NOTE:

- Distances referenced on plat to section lines are perpendicular.



CERTIFICATE
 THIS IS TO CERTIFY THAT THE ABOVE PLAT WAS PREPARED AND THE LOCATION AS SHOWN WAS STAKED ON THE GROUND FROM FIELD NOTES OF ACTUAL SURVEYS MADE BY ME OR UNDER MY SUPERVISION AND THAT THE SAME ARE TRUE AND CORRECT TO THE BEST OF MY KNOWLEDGE AND BELIEF.

PLAT #1

REGISTERED LAND SURVEYOR
 REGISTRATION # 19180
 STATE OF COLORADO
 04-05-19

REV: 1 04-05-19 M.D. (NAME CHANGE)

BASIS OF BEARINGS

BEARINGS ARE A BASED ASSUMPTION THAT THE WEST LINE OF THE SOUTHWEST 1/4 OF SECTION 29 BEARS N00°19'12"W. MONUMENTS DESCRIBED HEREON.

BASIS OF ELEVATION

BENCH MARK (H79) LOCATED IN THE NE 1/4 OF SECTION 35, T4S, R98W, 6th P.M., TAKEN FROM THE BULL FORK QUADRANGLE, COLORADO, 7.5 MINUTE SERIES, (TOPOGRAPHIC MAP) PUBLISHED BY THE UNITED STATES DEPARTMENT OF THE INTERIOR, GEOLOGICAL SURVEY. SAID ELEVATION IS MARKED AS BEING 8535 FEET.

UELS, LLC

Corporate Office * 85 South 200 East
 Vernal, UT 84078 * (435) 789-1017



TEP Rocky Mountain LLC

CHEVRON GM 544-19 (SURFACE LOCATION)
LOT 3, SECTION 29, T6S, R96W, 6th P.M.
GARFIELD COUNTY, COLORADO

SURVEYED BY	DAYTON SLAUGH, B.H.	04-01-19	SCALE
DRAWN BY	M.D.	04-02-19	1" = 1000'

WELL LOCATION PLAT

LEGEND:

- = PROPOSED WELLHEAD.
- = TARGET BOTTOM HOLE.
- ▲ = SECTION CORNERS LOCATED. (NAD 83)
- △ = SECTION CORNERS RE-ESTABLISHED. (Not Set on Ground.) (NAD 83)

T6S, R96W, 6th P.M.

NW Cor. Sec. 20
1912 Brass Cap,
0.8' High
Lat: 39.517038°
Long: 108.141883°

W.C. 1912 Brass
Cap, 1.3' High
Lat: 39.516958°
Long: 108.159426°

N89°37'59"E - 2697.16' (Meas. to True) N89°39'39"E - 2255.54' (Meas.)

True Position
Lat: 39.515643°
Long: 108.159424°

1912 Brass Cap,
1.0' High
Lat: 39.515694°
Long: 108.149867°

True Position
Lat: 39.515733°
Long: 108.141879°

C.C.
1972 Brass Cap,
1.5' High
Lat: 39.515733°
Long: 108.141875°

LOT 1

LOT 2

LOT 3

LOT 4

19

NOTE:
THE PROPOSED TARGET BOTTOM HOLE
BEARS N61°21'45"W 2622.66' FROM THE
PROPOSED WELLHEAD WHICH IS LOCATED IN
LOT 3 OF SECTION 29, T6S, R96W, 6th P.M.
AT 1521' FNL 791' FWL.

W.C. 1912 Brass
Cap, 1.5' High
Lat: 39.503325°
Long: 108.159400°

NW Cor. Sec. 29
1912 Brass Cap,
0.8' High
Lat: 39.502372°
Long: 108.141837°

CHEVRON GM 544-19
Target Bottom Hole

True Position
Lat: 39.501256°
Long: 108.159398°

True Position
Lat: 39.501269°
Long: 108.141834°

S89°58'29"W - 4957.68' (True to True)
S89°58'29"W - 4955.34' (True to C.C.)

C.C. 1912 Brass Cap,
1.0' High, Mound of
Stones
Lat: 39.501269°
Long: 108.141842°

Surface
Location

N00°01'05"W - 3391.96'
(Meas. To W.C.)

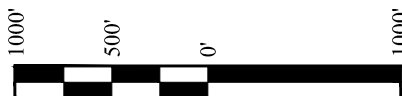
W 1/4 Cor. Sec. 30
1912 Brass Cap,
1.3' High
Lat: 39.494015°
Long: 108.159390°

R 97
W 96

NOTE:

- Distances referenced on plat to section lines are perpendicular.

NAD 83 (TARGET BOTTOM HOLE)	
LATITUDE = 39°30'05.98" (39.501662)	
LONGITUDE = 108°08'49.85" (108.147180)	
STATE PLANE NAD 83 (CO. CEN.)	
N: 1618491.60 E: 2253130.40	



PLAT #1

CERTIFICATE

THIS IS TO CERTIFY THAT THE ABOVE PLAT WAS PREPARED AND LOCATION AS SHOWN WAS STAKED ON THE GROUND FROM FIELD NOTES OF ACTUAL SURVEYS MADE BY ME OR UNDER MY SUPERVISION AND THAT THE SAME ARE TRUE AND CORRECT TO THE BEST OF MY KNOWLEDGE AND BELIEF.

REGISTERED LAND SURVEYOR
REGISTRATION NO. 19130
STATE OF COLORADO

REV: 1 04-05-19 M.D. (NAME CHANGE)

BASIS OF BEARINGS

BEARINGS ARE A BASED ASSUMPTION THAT THE WEST LINE OF THE SOUTHWEST 1/4 OF SECTION 29 BEARS N00°19'12"W. MONUMENTS DESCRIBED HEREON.

BASIS OF ELEVATION

BENCH MARK (H79) LOCATED IN THE NE 1/4 OF SECTION 35, T4S, R98W, 6th P.M., TAKEN FROM THE BULL FORK QUADRANGLE, COLORADO, 7.5 MINUTE SERIES, (TOPOGRAPHIC MAP) PUBLISHED BY THE UNITED STATES DEPARTMENT OF THE INTERIOR, GEOLOGICAL SURVEY. SAID ELEVATION IS MARKED AS BEING 8535 FEET.

UELS, LLC

Corporate Office * 85 South 200 East
Vernal, UT 84078 * (435) 789-1017



TEP Rocky Mountain LLC

CHEVRON GM 544-19 (TARGET BOTTOM HOLE)
SW 1/4 SE 1/4, SECTION 19, T6S, R96W, 6th P.M.
GARFIELD COUNTY, COLORADO

SURVEYED BY	DAYTON SLAUGH, B.H.	04-01-19	SCALE
DRAWN BY	M.D.	04-01-19	1" = 1000'

WELL LOCATION PLAT

