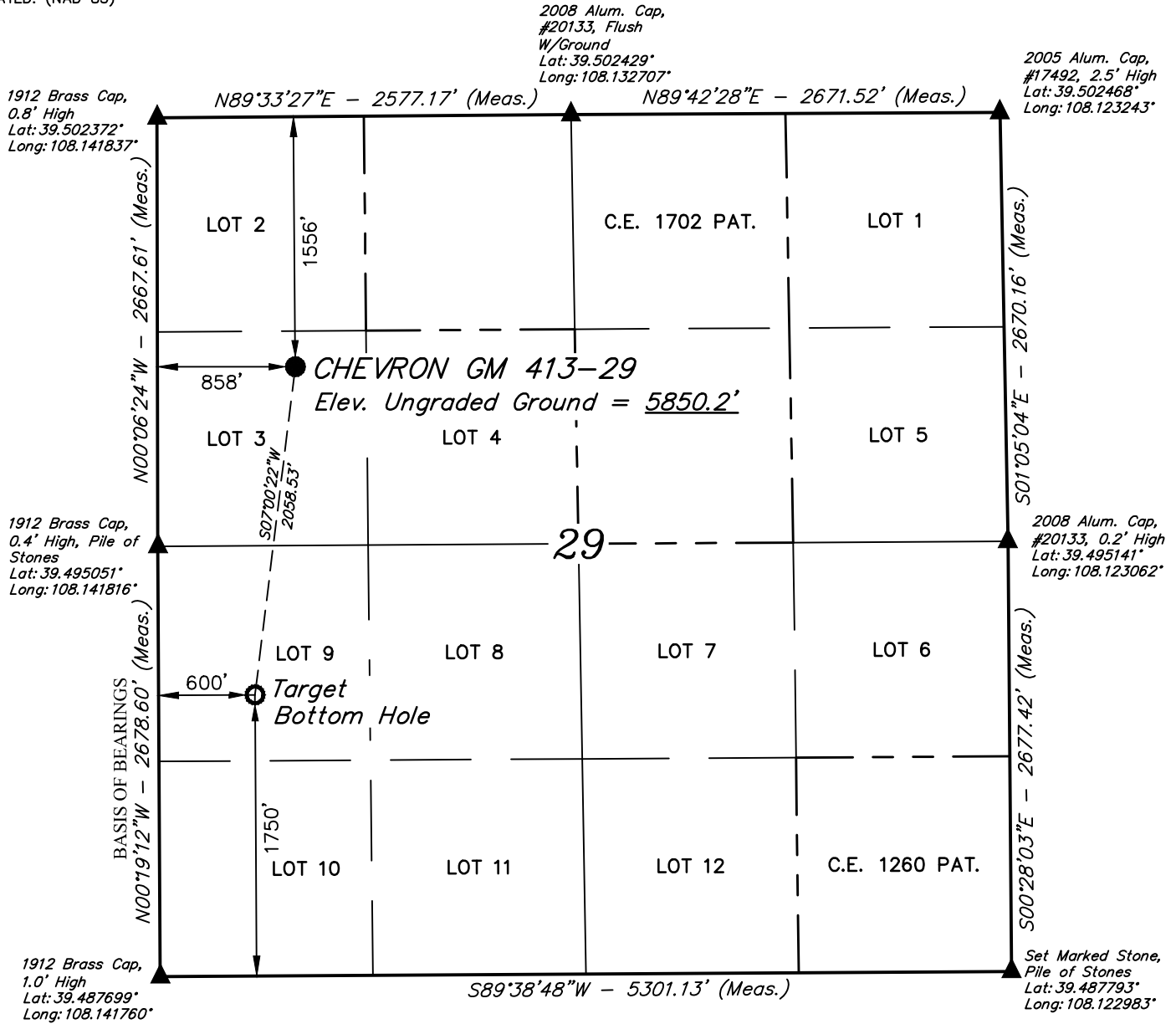


**LEGEND:**

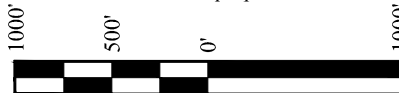
- = PROPOSED WELLHEAD.  
 ○ = TARGET BOTTOM HOLE.  
 ▲ = SECTION CORNERS LOCATED. (NAD 83)

**T6S, R96W, 6th P.M.**

**NOTE:**

- Distances referenced on plat to section lines are perpendicular.

PDOP = 2.0



NAD 83 (SURFACE LOCATION)	NAD 83 (TARGET BOTTOM HOLE)
LATITUDE = 39°29'53.24" (39.498121)	LATITUDE = 39°29'33.05" (39.492513)
LONGITUDE = 108°08'19.62" (108.138784)	LONGITUDE = 108°08'22.82" (108.139671)
STATE PLANE NAD 83 (CO. CEN.)	STATE PLANE NAD 83 (CO. CEN.)
N: 1617133.39 E: 2255460.94	N: 1615098.92 E: 2255151.40

PLAT #1

**CERTIFICATE**

THIS IS TO CERTIFY THAT THE ABOVE PLAT WAS PREPARED AND LOCATION AS SHOWN WAS STAKED ON THE GROUND FROM FIELD NOTES OF ACTUAL SURVEYS MADE BY ME OR UNDER MY SUPERVISION AND THAT THE SAME ARE TRUE AND CORRECT TO THE BEST OF MY KNOWLEDGE AND BELIEF.

REGISTERED LAND SURVEYOR  
 REGISTRATION # 1980  
 STATE OF COLORADO

REV: 1 04-05-19 M.D. (NAME CHANGE)

**BASIS OF BEARINGS**

BEARINGS ARE A BASED ASSUMPTION THAT THE WEST LINE OF THE SOUTHWEST 1/4 OF SECTION 29 BEARS N00°19'12"W. MONUMENTS DESCRIBED HEREON.

**BASIS OF ELEVATION**

BENCH MARK (H79) LOCATED IN THE NE 1/4 OF SECTION 35, T4S, R98W, 6th P.M., TAKEN FROM THE BULL FORK QUADRANGLE, COLORADO, 7.5 MINUTE SERIES, (TOPOGRAPHIC MAP) PUBLISHED BY THE UNITED STATES DEPARTMENT OF THE INTERIOR, GEOLOGICAL SURVEY. SAID ELEVATION IS MARKED AS BEING 8535 FEET.

UELS, LLC

Corporate Office \* 85 South 200 East  
 Vernal, UT 84078 \* (435) 789-1017



**TEP Rocky Mountain LLC**

**CHEVRON GM 413-29  
 LOT 3, SECTION 29, T6S, R96W, 6th P.M.  
 GARFIELD COUNTY, COLORADO**

SURVEYED BY	DAYTON SLAUGH, B.H.	04-01-19	SCALE
DRAWN BY	M.D.	04-02-19	1" = 1000'

**WELL LOCATION PLAT**