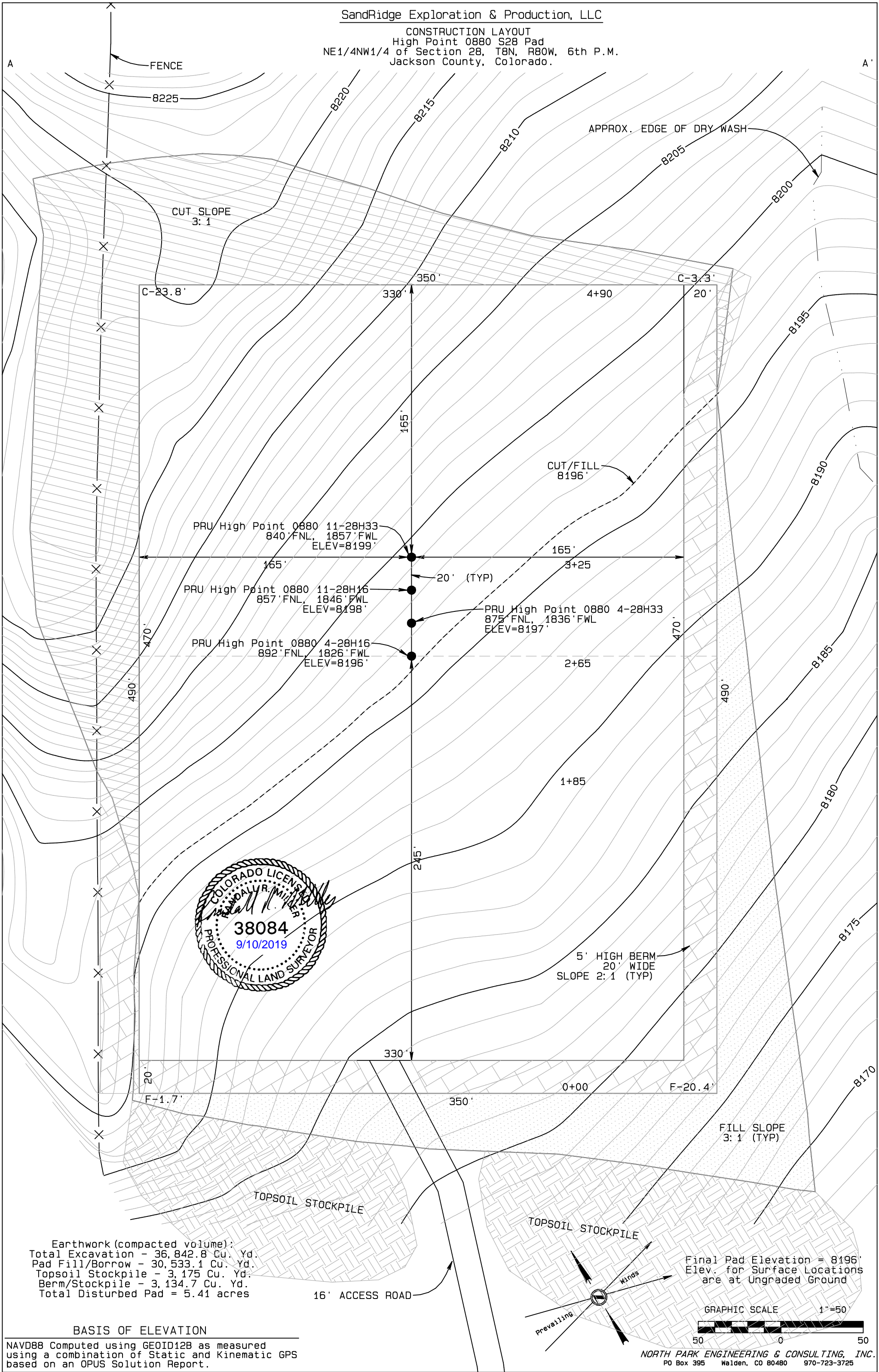


SandRidge Exploration & Production, LLC

CONSTRUCTION LAYOUT
High Point 0880 S28 Pad
NE1/4NW1/4 of Section 28, T8N, R80W, 6th P.M.
Jackson County, Colorado.



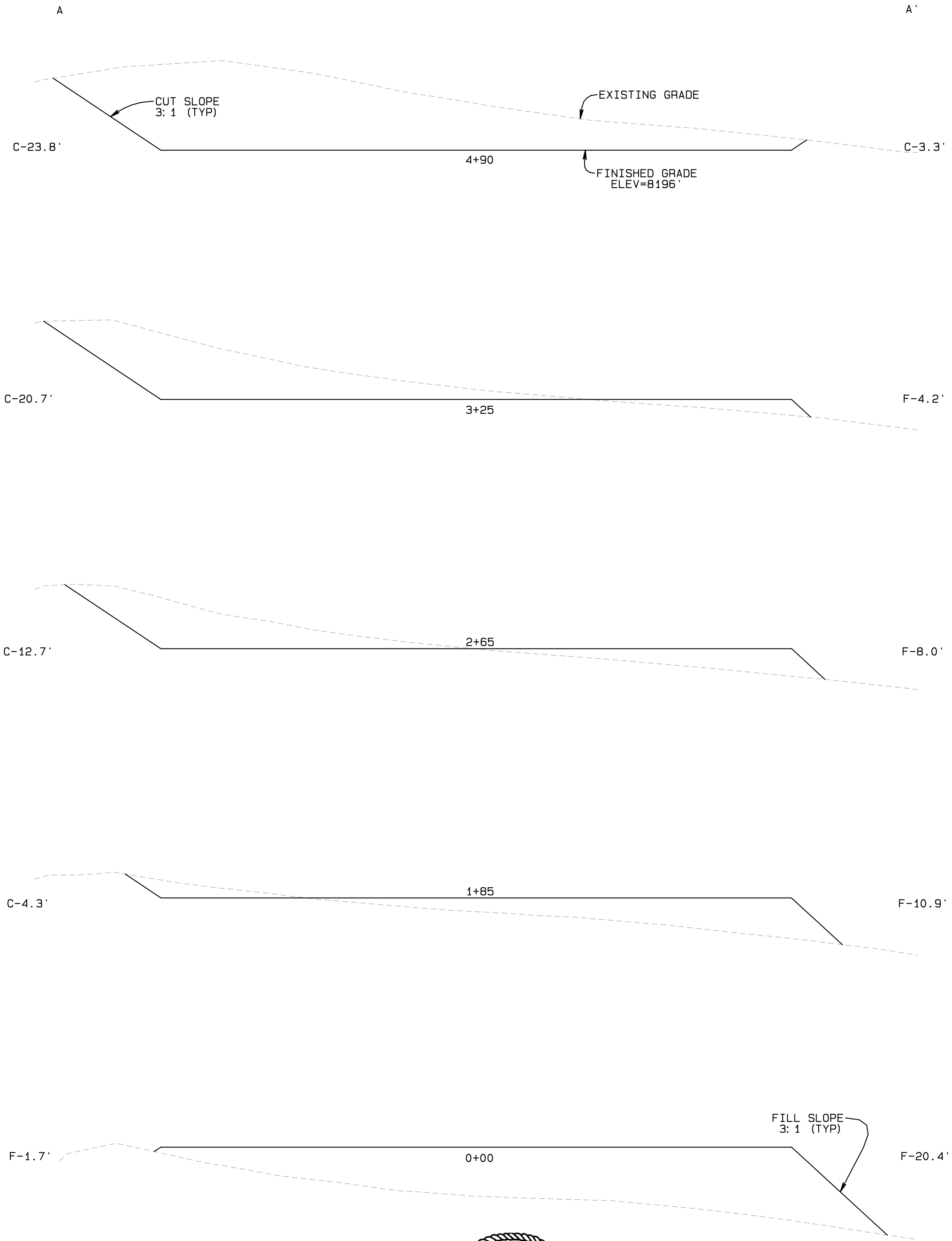
Earthwork (compacted volume):
Total Excavation - 36,842.8 Cu. Yd.
Pad Fill/Borrow - 30,533.1 Cu. Yd.
Topsoil Stockpile - 3,175 Cu. Yd.
Berm/Stockpile - 3,134.7 Cu. Yd.
Total Disturbed Pad = 5.41 acres

BASIS OF ELEVATION

NAVD88 Computed using GEOID12B as measured
using a combination of Static and Kinematic GPS
based on an OPUS Solution Report.

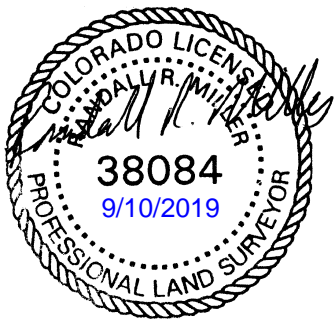
NORTH PARK ENGINEERING & CONSULTING, INC.
PO Box 395 Walden, CO 80480 970-723-3725

SandRidge Exploration & Production, LLC
CONSTRUCTION LAYOUT CROSS SECTION
High Point 0880 S28 Pad
NE1/4NW1/4 of Section 28, T8N, R80W, 6th P.M.,
Jackson County, Colorado.

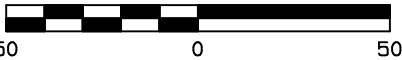


BASIS OF ELEVATION

NAVD88 Computed using GE0ID12B as measured
using a combination of Static and Kinematic GPS
based on an OPUS Solution Report.

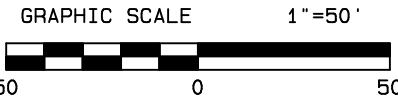
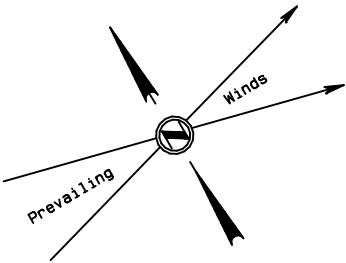
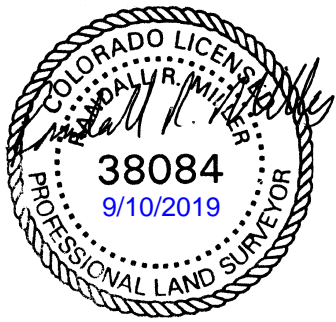
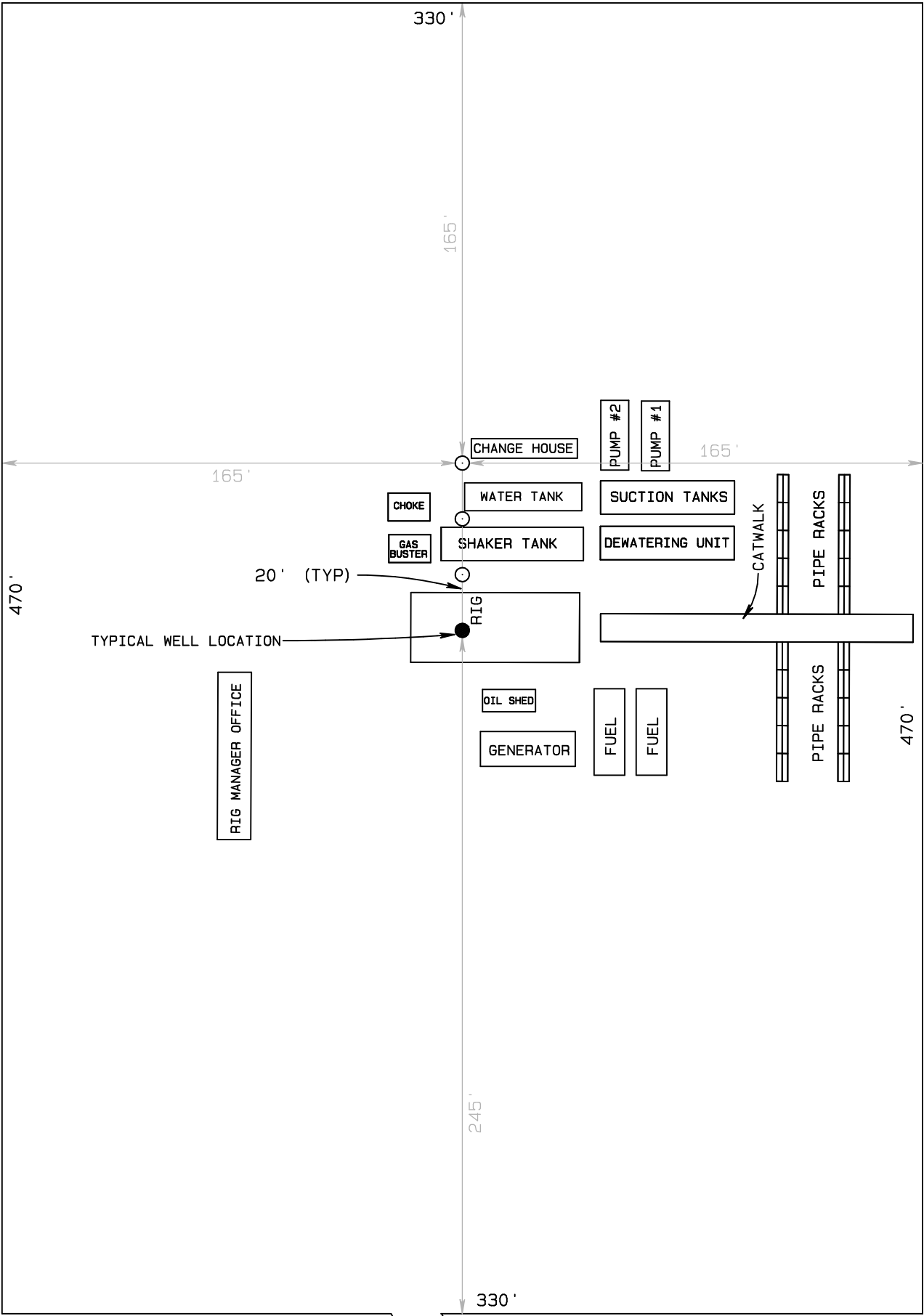


Vertical Exageration = 2 Times
GRAPHIC SCALE 1"=50'



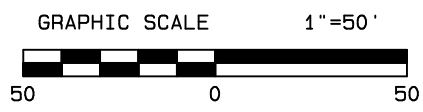
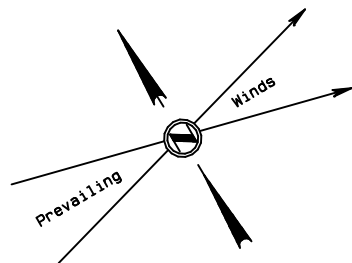
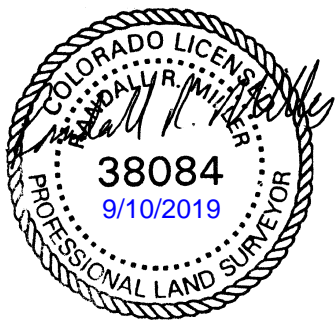
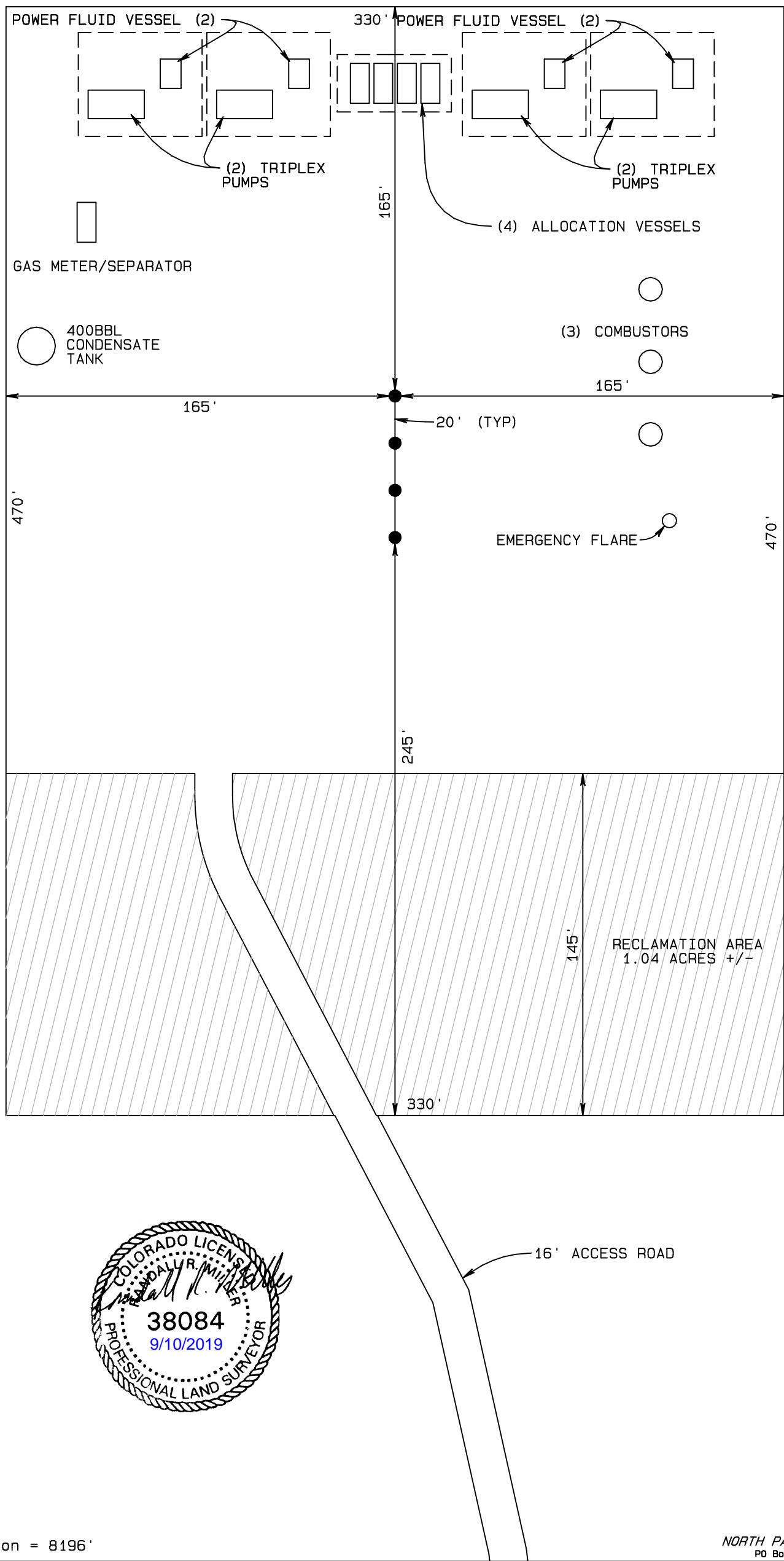
NORTH PARK ENGINEERING & CONSULTING, INC.
PO Box 395 Walden, CO 80480 970-723-3725

SandRidge Exploration & Production, LLC
TYPICAL RIG LAYOUT
High Point 0880 S28 Pad
NE1/4NW1/4 of Section 28, T8N, R80W, 6th P.M.
Jackson County, Colorado.



Final Pad Elevation = 8196'

SandRidge Exploration & Production, LLC
PRODUCTION FACILITY LAYOUT ON WELL PAD
High Point 0880 S28 Pad
NE1/4NW1/4 of Section 28, T8N, R80W, 6th P.M.
Jackson County, Colorado.



Final Pad Elevation = 8196'