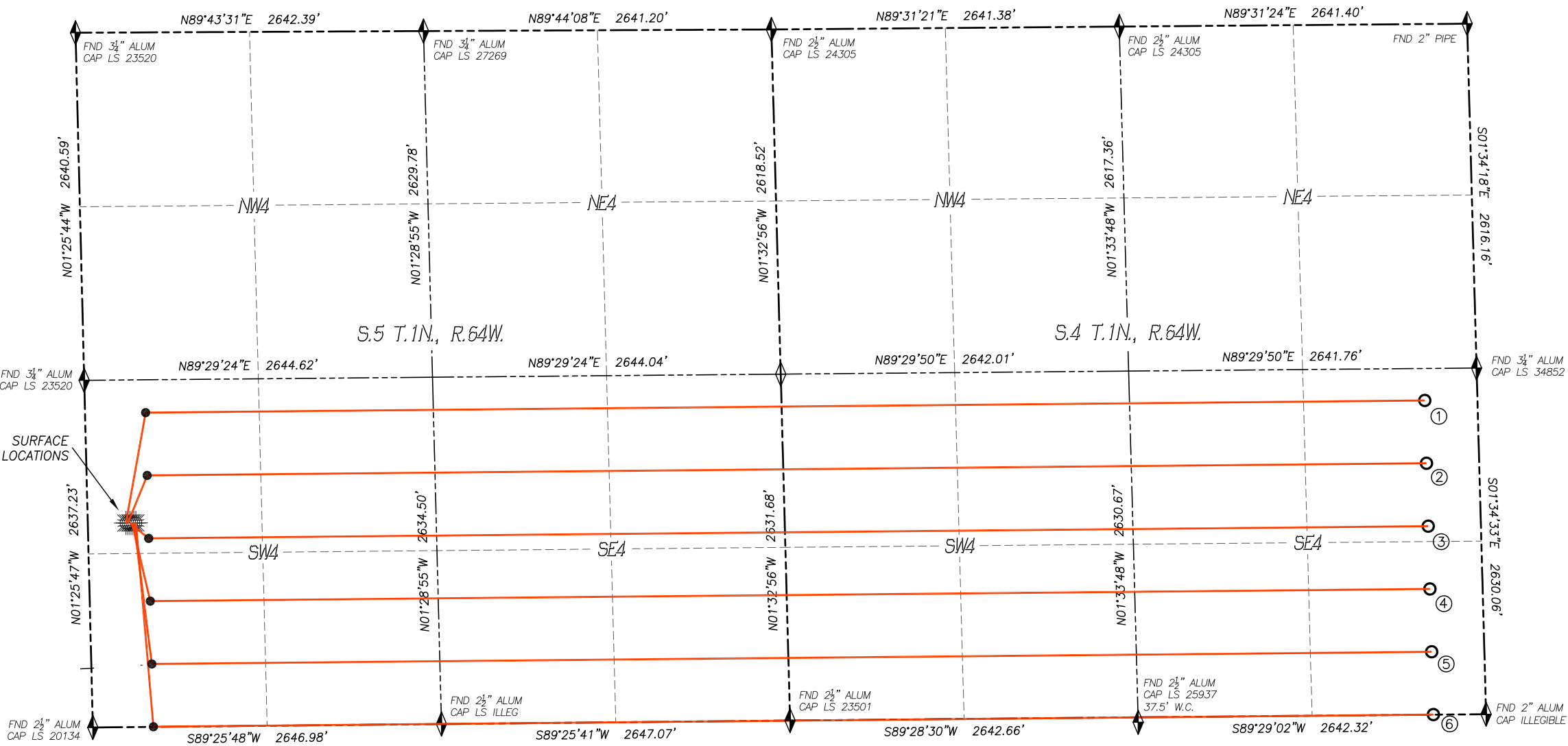


MULTI WELL PLAN
1-64-5_4 NWSW 5 WELL PAD
SECTION 5, TOWNSHIP 1 NORTH, RANGE 64 WEST OF THE 6TH P.M., WELD COUNTY



Bottom Hole Location (NAD83)						
No.	Well Name	Latitude	Longitude	Footage		BH Location STR
1	Grinde-01-64-05-3340B	N40.07977°	W104.54796°	2387' FSL	400' FEL	4-1N-64W
2	Grinde-01-64-05-4841C	N40.07846°	W104.54793°	1910' FSL	400' FEL	4-1N-64W
3	Grinde-01-64-05-4841B	N40.07715°	W104.54790°	1432' FSL	400' FEL	4-1N-64W
4	Grinde-01-64-05-4956C	N40.07584°	W104.54787°	955' FSL	400' FEL	4-1N-64W
5	Grinde-01-64-05-6457B	N40.07453°	W104.54784°	478' FSL	400' FEL	4-1N-64W
4	Grinde-01-64-05-6457CB	N40.07322°	W104.54781°	1' FSL	400' FEL	4-1N-64W

LEGEND

- FOUND MONUMENT AS DESCRIBED
- PROPOSED WELL
- EXISTING WELL
- BOTTOM HOLE
- ABANDONED WELL
- CALCULATED POSITION

0 1000'
SCALE: 1" = 1000'

DALEY LAND SURVEYING, INC.
303.953.9841