

State

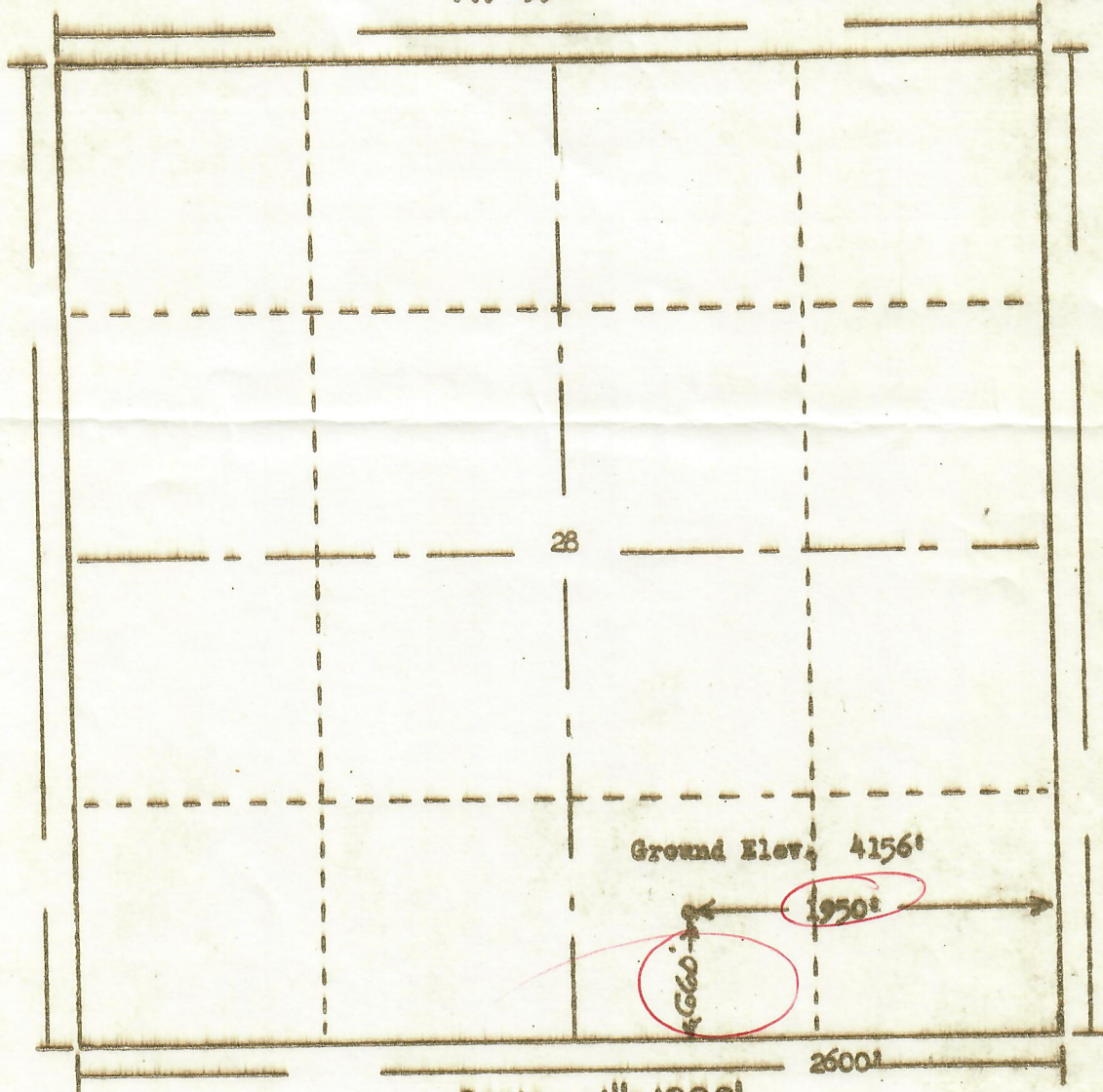


RECEIVED

OCT 3 - 1966

COLO. OIL & GAS CONS. COMM.

R. 53W



T. 9N

Scale ... 1" = 1000'

Powers Surveyors, Inc. of Denver, Colorado  
has in accordance with a request from Mr. Casch  
for Teltek Drlg. Co. determined the  
Location of No. 1 Strouse  
to be 6SW SE Section 28 Township 9N  
Range 53W of the 6th Principal Meridian  
Logan County, Colorado

66 38 9

I hereby certify that this plot is an  
accurate representation of a correct  
survey showing the location of

Date: 9-25-66

Brian H. Hollman  
Licensed Land Surveyor No. 255  
State of Colorado