



SRC Energy

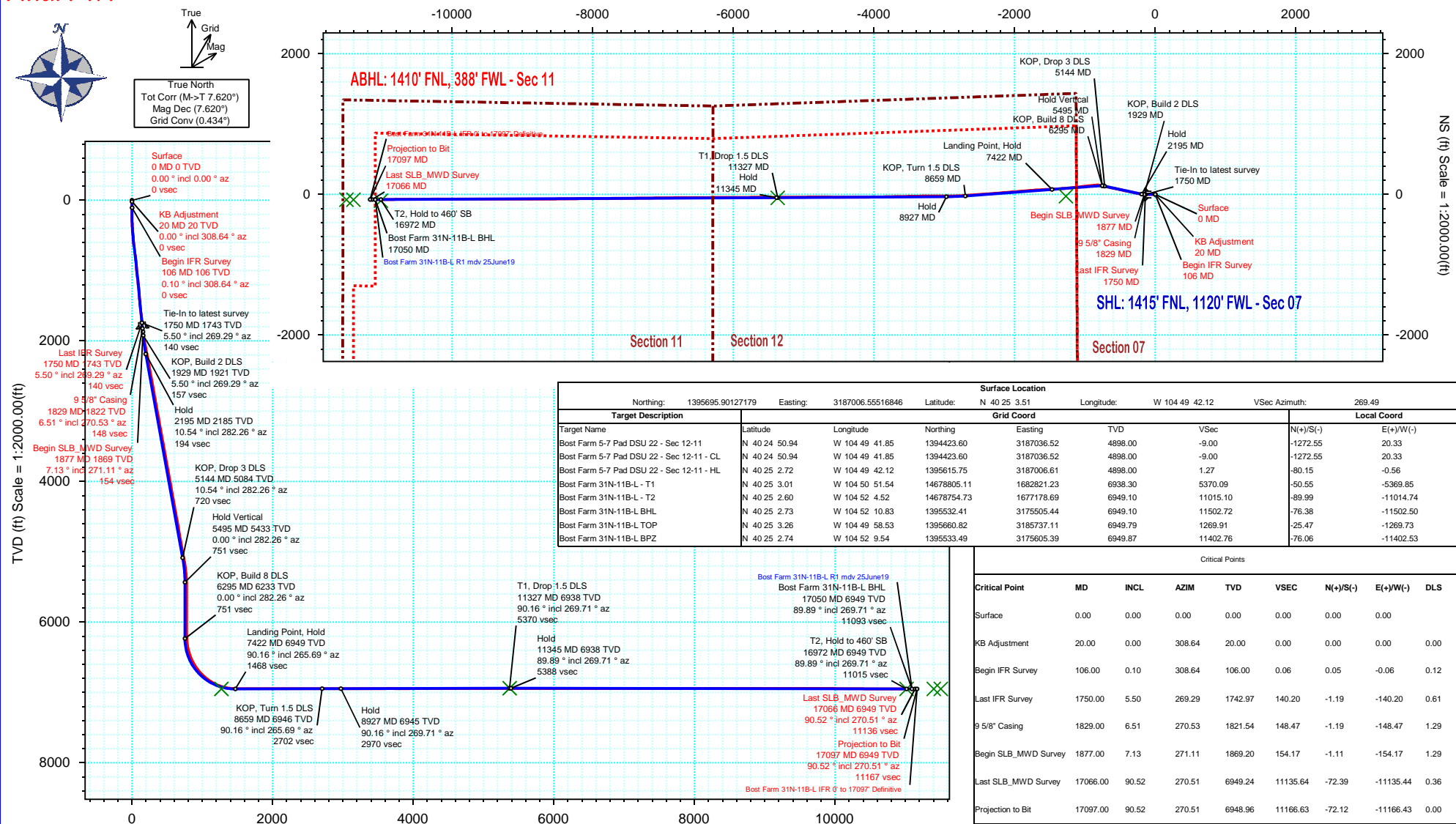
Rev 1

Schlumberger

Borehole:	Well:	Field:	Structure:
Original Hole	Bost Farm 31N-11B-L	CO, Weld County (NAD 83 NZ) - SRC	SRC Energy 07-05N-66W (Bost Farm 5-7 Pad DSU 22)

Gravity & Magnetic Parameters				Surface Location				Miscellaneous			
Model:	Magvar IFR	Dip:	66.62°	Date:	26-Jun-2019	Lat:	N 40 25 3.51	Northings:	1395695.9ftUS	Grid Conv:	0.434°
MagDec:	7.62°	FS:	52253nT	Gravity FS:	999.025mgn (9.80665 Based)	Lon:	W 104 49 42.12	Easting:	3187006.56ftUS	Scale Fact:	0.99996108
								Slot:	Bost Farm 31N-11B-L	TVD Ref:	KB 20ft(4898ft above MSL)
								Plan:	Bost Farm 31N-11B-L IFR 0' to 17097' Definitive		

Final PvA



Bost Farm 31N-11B-L IFR 0' to 17097' Definitive Survey Geodetic Report

(Def Survey)

Report Date: July 17, 2019 - 04:18 PM
Client: SRC Energy
Field: CO, Weld County (NAD 83 NZ) - SRC
Structure / Slot: SRC Energy 07-05N-66W (Bost Farm 5-7 Pad DSU 22) / Bost Farm 31N-11B-L
Well: Bost Farm 31N-11B-L
Borehole: Original Hole
UWI / API#: Unknown / 05-123-47665
Survey Name: Bost Farm 31N-11B-L IFR 0' to 17097' Definitive
Survey Date: May 20, 2019
Tort / AHD / DDI / ERD Ratio: 200.046° / 11189.469 ft / 6.741 / 1.610
Coordinate Reference System: NAD83 Colorado State Plane, Northern Zone, US Feet
Location Lat / Long: N 40° 25' 3.51480", W 104° 49' 42.11760"
Location Grid N/E Y/X: N 1395695.901 ftUS, E 3187006.555 ftUS
CRS Grid Convergence Angle: 0.4340°
Grid Scale Factor: 0.99996108
Version / Patch: 2.10.760.0

Survey / DLS Computation: Minimum Curvature / Lubinski
Vertical Section Azimuth: 269.490° (True North)
Vertical Section Origin: 0.000 ft, 0.000 ft
TVD Reference Datum: KB 20ft
TVD Reference Elevation: 4898.000 ft above MSL
Seabed / Ground Elevation: 4878.000 ft above MSL
Magnetic Declination: 7.620°
Total Gravity Field Strength: 999.0247mgn (9.80665 Based)
Gravity Model: GARM
Total Magnetic Field Strength: 52253.000 nT
Magnetic Dip Angle: 66.620°
Declination Date: June 26, 2019
Magnetic Declination Model: Magvar IFR
North Reference: True North
Grid Convergence Used: 0.0000°
Total Corr Mag North->True North: 7.6200°
Local Coord Referenced To: Well Head

Comments	MD (ft)	Incl (°)	Azim True (°)	TVD (ft)	VSEC (ft/s)	NS (ft)	EW (ft)	DLS (°/100ft)	Northing (ftUS)	Easting (ftUS)	Latitude (°)	Longitude (°)
Surface	0.00	0.00	0.00	0.00	0.00	0.00	0.00	N/A	1395695.90	3187006.56	40.417643	-104.828366
KB Adjustment	20.00	0.00	308.64	20.00	0.00	0.00	0.00	0.00	1395695.90	3187006.56	40.417643	-104.828366
Begin IFR Survey	106.00	0.10	308.64	106.00	0.06	0.05	-0.06	0.12	1395695.95	3187006.50	40.417643	-104.828366
	191.00	0.54	76.02	191.00	-0.27	0.19	0.27	0.71	1395696.09	3187006.83	40.417644	-104.828365
	281.00	0.73	271.32	281.00	-0.11	0.31	0.11	1.40	1395696.21	3187006.66	40.417644	-104.828366
	370.00	2.92	272.73	369.95	2.72	0.43	-2.72	2.46	1395696.31	3187003.83	40.417644	-104.828376
	460.00	4.63	268.86	459.75	8.64	0.46	-8.64	1.92	1395696.30	3186997.91	40.417644	-104.828397
	550.00	5.75	269.03	549.38	16.78	0.31	-16.78	1.24	1395696.09	3186989.77	40.417644	-104.828426
	640.00	6.86	269.59	638.83	26.66	0.20	-26.67	1.24	1395695.90	3186979.89	40.417644	-104.828462
	730.00	6.40	267.26	728.23	37.05	-0.08	-37.05	0.59	1395695.54	3186969.51	40.417643	-104.828499
	820.00	6.55	270.85	817.66	47.19	-0.24	-47.19	0.48	1395695.30	3186959.37	40.417642	-104.828535
	910.00	6.08	271.14	907.11	57.09	-0.07	-57.09	0.52	1395695.40	3186949.47	40.417643	-104.828571
	1000.00	6.10	270.92	996.60	66.63	0.10	-66.64	0.03	1395695.50	3186939.92	40.417643	-104.828605
	1090.00	5.74	271.39	1086.12	75.91	0.29	-75.92	0.40	1395695.61	3186930.64	40.417644	-104.828639
	1180.00	5.87	270.57	1175.66	85.01	0.44	-85.02	0.17	1395695.70	3186921.54	40.417644	-104.828671
	1270.00	5.44	269.55	1265.22	93.88	0.45	-93.89	0.49	1395695.64	3186912.67	40.417644	-104.828703
	1360.00	5.38	270.07	1354.82	102.37	0.43	-102.37	0.09	1395695.55	3186904.19	40.417644	-104.828734
	1450.00	5.07	269.15	1444.45	110.56	0.37	-110.57	0.36	1395695.44	3186895.99	40.417644	-104.828763
	1540.00	5.78	265.85	1534.04	119.06	-0.02	-119.07	0.86	1395694.98	3186887.50	40.417643	-104.828794
	1630.00	5.91	265.52	1623.58	128.21	-0.70	-128.21	0.15	1395694.23	3186878.36	40.417641	-104.828826
	1720.00	5.68	269.02	1713.12	137.28	-1.14	-137.28	0.47	1395693.72	3186869.30	40.417640	-104.828859
	1750.00	5.50	269.29	1742.97	140.20	-1.19	-140.20	0.61	1395693.65	3186866.37	40.417640	-104.828870
	1829.00	6.51	270.53	1821.54	148.47	-1.19	-148.47	1.29	1395693.59	3186858.11	40.417640	-104.828899
Last IFR Survey 9 5/8" Casing Begin	1877.00	7.13	271.11	1869.20	154.17	-1.11	-154.17	1.29	1395693.62	3186852.41	40.417640	-104.828920
SLB_MWD Survey	1972.00	10.29	277.75	1963.09	168.46	0.15	-168.47	3.49	1395694.78	3186838.09	40.417643	-104.828971
	2067.00	11.11	278.38	2056.44	185.90	2.63	-185.94	0.87	1395697.12	3186820.61	40.417650	-104.829034
	2161.00	11.08	278.46	2148.68	203.77	5.28	-203.83	0.04	1395699.63	3186802.70	40.417657	-104.829098
	2256.00	10.55	280.82	2242.00	221.32	8.25	-221.40	0.73	1395702.48	3186785.11	40.417666	-104.829161
	2348.00	10.73	281.26	2332.41	237.96	11.51	-238.07	0.21	1395705.60	3186768.41	40.417675	-104.829221
	2443.00	10.64	281.08	2425.77	255.21	14.92	-255.35	0.10	1395708.88	3186751.11	40.417684	-104.829283
	2539.00	10.52	282.04	2520.14	272.45	18.45	-272.62	0.22	1395712.28	3186733.81	40.417694	-104.829345
	2635.00	10.35	282.76	2614.55	289.39	22.18	-289.60	0.22	1395715.89	3186716.80	40.417704	-104.829406
	2728.00	10.44	282.18	2706.02	305.75	25.80	-305.99	0.15	1395719.39	3186700.39	40.417714	-104.829465
	2822.00	10.34	285.69	2798.48	322.16	29.88	-322.43	0.68	1395723.34	3186683.92	40.417725	-104.829524
	2915.00	10.67	280.50	2889.92	338.62	33.71	-338.94	1.08	1395727.04	3186667.39	40.417736	-104.829583
	3008.00	10.54	283.27	2981.34	355.33	37.23	-355.68	0.57	1395730.44	3186650.62	40.417745	-104.829643
	3101.00	10.52	282.11	3072.77	371.88	40.96	-372.26	0.23	1395734.04	3186634.01	40.417755	-104.829703
	3195.00	10.28	280.04	3165.23	388.50	44.23	-388.91	0.47	1395737.18	3186617.34	40.417764	-104.829763
	3288.00	10.45	282.01	3256.71	404.89	47.43	-405.33	0.42	1395740.26	3186600.89	40.417773	-104.829822
	3382.00	10.74	282.60	3349.11	421.74	51.11	-422.22	0.33	1395743.81	3186583.98	40.417783	-104.829882
	3475.00	10.55	282.06	3440.51	438.49	54.78	-439.00	0.23	1395747.35	3186567.17	40.417793	-104.829943
	3570.00	10.43	280.43	3533.92	455.42	58.16	-455.96	0.34	1395750.60	3186550.19	40.417803	-104.830004
	3664.00	10.35	285.03	3626.38	471.91	61.89	-472.48	0.89	1395754.20	3186533.64	40.417813	-104.830063
	3758.00	10.91	281.17	3718.77	488.76	65.80	-489.37	0.96	1395757.99	3186516.72	40.417824	-104.830123
	3850.00	10.73	281.75	3809.13	505.66	69.23	-506.29	0.23	1395761.29	3186499.77	40.417833	-104.830184
	3943.00	10.41	282.72	3900.55	522.30	72.84	-522.96	0.39	1395764.78	3186483.07	40.417843	-104.830244
	4128.00	10.32	281.13	4082.53	554.80	79.72	-555.53	0.16	1395771.41	3186450.46	40.417862	-104.830361
	4222.00	10.49	282.25	4174.99	571.39	83.16	-572.15	0.28	1395774.73	3186433.81	40.417871	-104.830421
	4315.00	10.18	279.85	4266.48	587.73	86.37	-588.52	0.57	1395777.80	3186417.42	40.417880	-104.830480
	4409.00	10.66	283.42	4358.93	604.34	89.80	-605.16	0.86	1395781.12	3186400.75	40.417889	-104.830539
	4501.00	10.57	281.31	4449.36	620.86	93.43	-621.71	0.43	1395784.62	3186384.18	40.417899	-104.830599
	4595.00	10.23	284.04	4541.81	637.38	97.15	-638.27	0.64	1395788.21	3186367.60	40.417910	-104.830658
	4780.00	10.48	281.73	4723.80	669.72	104.56	-670.68	0.26	1395795.37	3186335.13	40.417930	-104.830775
	4873.00	10.13	283.92	4815.30	685.91	108.24	-686.90	0.56	1395798.93	3186318.89	40.417940	-104.830833
	4967.00	10.50	281.05	4907.78	702.30	111.87	-703.33	0.67	1395802.44	3186302.43	40.417950	-104.830892
	5059.00	10.42	282.17	4998.25	718.63	115.23	-719.69	0.24	1395805.68	3186286.04	40.417959	-104.830951
	5152.00	11.17	282.96	5089.61	735.60	119.03	-736.69	0.82	1395809.34	3186269.02	40.417970	-104.831012
	5245.00	8.89	281.08	5181.18	751.40	122.43	-752.52	2.48	1395812.62	3186253.16	40.417979	-104.831069
	5339.00	6.20	274.22	5274.36	763.58	124.20	-764.71	3.01	1395814.30	3186240.95	40.417984	-104.831112
	5431.00	3.22	274.09	5366.04	771.11	124.75	-772.25	3.24	1395814.79	3186233.42	40.417985	-104.831139
	5525.00	1.60	293.84	5459.95	774.93	125.47	-776.08	1.91	1395815.48	3186229.58	40.417987	-104.831153
	5617.00	0.18	64.39	5551.94	775.97	126.05	-777.13	1.87	1395816.06	3186228.53	40.417989	-104.831157
	5711.00	0.25	225.41	5645.94	775.99	125.97	-777.14	0.45	1395815.98	3186228.52	40.417989	-104.831157
	5804.00	0.20	268.61	5738.94	776.29	125.82	-777.44	0.19	1395815.83	3186228.21	40.417988	-104.831158
	5898.00	0.16	1.27	5832.94	776.45	125.95	-777.61	0.28	1395815.95	3186228.05	40.417989	-104.831159
	5990.00	0.25	347.68	5924.94	776.49	126.27	-777.65	0.11	1395816.28	3186228.01	40.417990	-104.831159
	6084.00	0.16	352.70	6018.94	776.55	126.60	-777.71	0.10	1395816.61	3186227.94	40.417990	-104.831159
	6178.00	0.23	292.48	6112.94	776.74	126.81	-777.90	0.22	1395816.81	3186227.75	40.417991	-104.831160
	6271.00	0.35	286.67	6205.94	777.18	126.96	-778.34	0.13	1395816.96	3186227.31	40.417991	-104.831161
	6365.00	7.66	289.50	6299.64	783.35	129.14	-784.53	7.78	1395819.09	3186221.10	40.417997	-104.831184
	6458.00	13.75	275.47	6391.00	800.19	132.26	-801.39	7.08	1395822.08	3186204.22	40.418006	-104.831244
	6551.00	19.83	266.98	6480.00	826.97	132.48	-828.18	7.03	1395822.10	3186177.43	40.418007	-104.831340
	6645.00	27.71	266.02	6565.96	864.77	130.12	-865.96	8.39	1395819.46	3186139.67	40.418000	-104.831476
	6738.00	35.20	264.36	6645.24	913.12	125.98	-914.28	8.11	1395814.95	3186091.39	40.417989	-104.831649
	6832.00	42.52	263.54	6718.39	971.78	119.74	-972.88</					

Comments	MD (ft)	Incl (°)	Azim True (°)	TVD (ft)	VSEC (ft)	NS (ft)	EW (ft)	DLS (°/100ft)	Northing (ftUS)	Easting (ftUS)	Latitude (°)	Longitude (°)
	6926.00	49.65	262.31	6783.54	1039.00	111.36	-1040.03	7.64	1395799.38	3185965.76	40.417949	-104.832101
	7020.00	56.89	263.30	6839.72	1113.77	101.96	-1114.72	7.75	1395789.41	3185891.14	40.417923	-104.832369
	7113.00	65.66	264.56	6884.38	1194.87	93.38	-1195.74	9.50	1395780.22	3185810.19	40.417899	-104.832660
	7206.00	73.73	265.48	6916.62	1281.75	85.84	-1282.57	8.73	1395772.02	3185723.42	40.417879	-104.832972
	7299.00	81.23	265.92	6936.77	1372.28	79.04	-1373.03	8.08	1395764.54	3185633.03	40.417860	-104.833297
	7391.00	88.65	267.31	6944.88	1463.74	73.64	-1464.45	8.20	1395758.44	3185541.65	40.417845	-104.833625
	7484.00	90.00	267.15	6945.98	1556.65	69.14	-1557.33	1.46	1395753.25	3185448.81	40.417833	-104.833959
	7577.00	89.79	267.36	6946.15	1649.58	64.69	-1650.23	0.32	1395748.09	3185355.95	40.417820	-104.834292
	7669.00	89.99	265.13	6946.32	1741.43	58.67	-1742.02	2.43	1395741.37	3185264.21	40.417804	-104.834622
	7764.00	90.30	265.53	6946.08	1836.18	50.93	-1836.71	0.53	1395732.92	3185169.59	40.417783	-104.834962
	7857.00	90.10	265.11	6945.76	1928.93	43.34	-1929.39	0.50	1395724.63	3185076.97	40.417762	-104.835295
	7949.00	90.00	265.50	6945.68	2020.69	35.81	-2021.09	0.44	1395716.41	3184985.34	40.417741	-104.835624
	8042.00	90.04	264.97	6945.64	2113.43	28.09	-2113.76	0.57	1395707.98	3184892.73	40.417720	-104.835957
	8134.00	90.30	266.08	6945.37	2205.21	20.91	-2205.48	1.24	1395700.11	3184801.07	40.417700	-104.836287
	8229.00	90.02	265.12	6945.11	2299.99	13.62	-2300.20	1.05	1395692.10	3184706.41	40.417680	-104.836627
	8322.00	89.78	266.57	6945.27	2392.80	6.88	-2392.95	1.58	1395684.66	3184613.72	40.417662	-104.836960
	8508.00	90.11	265.55	6945.45	2578.46	-5.90	-2578.51	0.58	1395670.48	3184428.27	40.417626	-104.837626
	8600.00	90.14	265.54	6945.25	2670.24	-13.04	-2670.23	0.03	1395662.64	3184336.61	40.417607	-104.837956
	8693.00	89.99	267.33	6945.14	2763.11	-18.83	-2763.05	1.93	1395656.15	3184243.84	40.417591	-104.838289
	8786.00	90.03	267.62	6945.13	2856.05	-22.92	-2856.96	0.31	1395651.35	3184150.97	40.417580	-104.838623
	8880.00	90.31	270.51	6944.85	2950.04	-24.46	-2949.84	3.09	1395649.10	3184057.01	40.417575	-104.838960
	8973.00	90.30	269.97	6944.35	3043.03	-24.07	-3042.93	0.58	1395648.79	3183964.02	40.417576	-104.839294
	9067.00	90.25	270.32	6943.90	3137.02	-23.83	-3136.93	0.38	1395648.32	3183870.02	40.417577	-104.839632
	9160.00	89.85	269.56	6943.82	3230.02	-23.93	-3229.93	0.92	1395647.51	3183777.03	40.417577	-104.839966
	9253.00	89.89	269.60	6944.03	3323.01	-24.61	-3222.93	0.06	1395646.13	3183684.05	40.417575	-104.840300
	9346.00	90.01	268.86	6944.11	3416.01	-25.86	-3415.92	0.81	1395644.17	3183591.07	40.417571	-104.840634
	9440.00	90.09	268.92	6944.03	3510.01	-27.68	-3509.90	0.11	1395641.64	3183497.11	40.417566	-104.840971
	9532.00	90.31	269.59	6943.71	3602.01	-28.87	-3601.89	0.77	1395639.75	3183405.13	40.417563	-104.841302
	9625.00	89.87	268.37	6943.56	3695.00	-30.53	-3694.87	1.39	1395637.39	3183312.17	40.417558	-104.841635
	9718.00	90.00	268.58	6943.67	3787.99	-33.01	-3787.84	0.27	1395634.21	3183219.23	40.417552	-104.841969
	9811.00	89.97	268.56	6943.69	3880.97	-35.33	-3880.81	0.04	1395631.19	3183126.28	40.417545	-104.842303
	9904.00	90.11	269.16	6943.63	3973.97	-37.18	-3973.79	0.66	1395628.63	3183033.32	40.417540	-104.842637
	9996.00	90.31	269.61	6943.29	4065.97	-38.16	-4065.79	0.54	1395626.95	3182941.34	40.417537	-104.842968
	10090.00	90.08	268.72	6942.97	4159.96	-39.53	-4159.78	0.98	1395624.87	3182847.37	40.417534	-104.843305
	10183.00	90.10	270.17	6942.82	4252.96	-40.43	-4252.77	1.56	1395623.26	3182754.39	40.417531	-104.843639
	10367.00	90.82	270.86	6941.35	4436.92	-38.78	-4436.75	0.54	1395623.52	3182670.40	40.417535	-104.844300
	10461.00	89.93	269.93	6940.73	4530.91	-38.13	-4530.75	1.37	1395623.46	3182476.41	40.417537	-104.844637
	10646.00	90.01	270.70	6940.83	4715.89	-37.12	-4715.74	0.42	1395623.07	3182291.42	40.417540	-104.845302
	10739.00	90.01	269.68	6940.81	4808.88	-36.81	-4808.74	1.10	1395622.68	3182198.43	40.417541	-104.845636
	10832.00	90.01	269.45	6940.80	4901.88	-37.51	-4901.74	0.25	1395621.27	3182105.44	40.417539	-104.845970
	10925.00	89.68	268.91	6941.05	4994.88	-38.84	-4994.73	0.68	1395619.23	3182012.47	40.417535	-104.846304
	11018.00	90.08	269.93	6941.24	5087.87	-39.79	-5087.72	1.18	1395617.59	3181919.49	40.417532	-104.846638
	11111.00	89.89	269.57	6941.27	5180.87	-40.19	-5180.72	0.44	1395616.48	3181826.50	40.417531	-104.846972
	11203.00	89.98	269.71	6941.37	5272.87	-40.77	-5272.72	0.18	1395615.20	3181734.51	40.417530	-104.847302
	11296.00	89.91	269.70	6941.46	5365.87	-41.25	-5365.72	0.08	1395614.02	3181641.52	40.417528	-104.847636
	11389.00	89.95	270.26	6941.57	5458.87	-41.28	-5458.72	0.60	1395613.28	3181548.53	40.417528	-104.847970
	11483.00	90.16	270.36	6941.48	5552.86	-40.77	-5552.72	0.25	1395613.08	3181454.53	40.417529	-104.848308
	11579.00	90.33	270.00	6941.07	5648.85	-40.47	-5648.71	0.41	1395612.65	3181358.54	40.417530	-104.848652
	11671.00	89.83	269.37	6940.94	5740.85	-40.98	-5740.71	0.87	1395611.45	3181266.55	40.417529	-104.848983
	11764.00	89.99	269.36	6941.09	5833.85	-42.01	-5833.71	0.17	1395609.71	3181173.57	40.417526	-104.849317
	11857.00	90.22	270.44	6940.92	5926.84	-42.17	-5926.70	1.19	1395608.85	3181080.58	40.417525	-104.849651
	11952.00	89.81	269.10	6940.89	6021.84	-42.55	-6021.70	1.48	1395607.75	3180985.60	40.417524	-104.849992
	12045.00	90.19	270.01	6940.89	6114.84	-43.27	-6114.70	1.06	1395606.32	3180892.61	40.417522	-104.850326
	12138.00	89.99	269.93	6940.75	6207.84	-43.32	-6207.70	0.23	1395605.57	3180799.62	40.417522	-104.850660
	12232.00	89.81	268.94	6940.91	6301.84	-44.25	-6301.69	1.07	1395603.93	3180705.64	40.417519	-104.850997
	12327.00	89.52	268.67	6941.47	6396.83	-46.23	-6396.67	0.42	1395601.23	3180610.68	40.417514	-104.851338
	12420.00	90.34	269.95	6941.58	6489.82	-47.35	-6489.66	1.63	1395599.40	3180517.71	40.417511	-104.851672
	12513.00	90.17	270.02	6941.17	6582.82	-47.37	-6582.66	0.20	1395598.68	3180424.71	40.417511	-104.852006
	12607.00	89.88	269.85	6941.13	6676.82	-47.48	-6676.66	0.36	1395597.86	3180330.32	40.417510	-104.852344
	12699.00	90.14	269.94	6941.11	6768.81	-47.65	-6768.66	0.30	1395596.99	3180238.73	40.417510	-104.852674
	12793.00	90.00	269.40	6941.00	6862.81	-48.19	-6862.66	0.59	1395595.74	3180144.74	40.417508	-104.853012
	12886.00	90.14	269.70	6940.88	6955.81	-48.92	-6955.65	0.36	1395594.30	3180051.76	40.417506	-104.853346
	12981.00	89.94	269.41	6940.82	7050.81	-49.66	-7050.65	0.37	1395592.85	3179957.77	40.417504	-104.853687
	13074.00	89.68	268.51	6941.12	7143.81	-51.35	-7143.63	1.01	1395590.45	3179863.81	40.417499	-104.854021
	13167.00	90.04	269.62	6941.35	7236.80	-52.86	-7236.62	1.25	1395588.23	3179770.84	40.417495	-104.854355
	13260.00	90.14	269.39	6941.21	7329.80	-53.67	-7329.61	0.27	1395586.72	3179677.86	40.417493	-104.854689
	13353.00	90.21	269.34	6940.92	7422.80	-54.70	-7422.61	0.09	1395584.99	3179584.88	40.417490	-104.855023
	13445.00	89.79	269.17	6940.92	7514.80	-55.89	-7514.60	0.49	1395583.10	3179492.90	40.417486	-104.855353
	13538.00	90.28	269.53	6940.86	7607.80	-56.95	-7607.59	0.65	1395581.34	3179399.92	40.417483	-104.855687
	13631.00	90.03	269.76	6940.61	7700.80	-57.53	-7700.59	0.37	1395580.06	3179306.93	40.417482	-104.856021
	13725.00	90.02	269.11	6940.57	7794.80	-58.45	-7794.59	0.69	1395578.42	3179212.95	40.417479	-104.856355
	13817.00	89.59	269.14	6940.89	7886.80	-59.86	-7886.58	0.47	1395576.32	3179120.98	40.417475	-104.856689
	13910.00	90.02	269.53	6941.20	7979.79	-60.94	-7979.57	0.62	1395574.53	3179028.00	40.417472	-104.857023
	14003.00	90.22	270.10	6941.01	8072.79	-61.24	-8072.57	0.65	1395573.53	3178935.01	40.417471	-104.857357
	14096.00	89.84	270.04	6940.96	8165.79	-61.12	-8165.57	0.41	1395572.94	3178842.02	40.417472	-104.857691
	14189.00	90.10	269.36	6941.01	8258.79	-61.61	-8258.56	0.78	1395571.75	3178749.03	40.417470	-104.858025
	14282.00	90.02	269.36	6940.91	8351.79	-62.65	-8351.56	0.09	1395570.00	3178656.05	40.417467	-104.858359
	14375.00	89.76	269.35	6941.09	8444.79	-63.70	-8444.55	0.28	1395568.25	3178563.07	40.417464	-104.858693

Comments	MD (ft)	Incl (°)	Azim True (°)	TVD (ft)	VSEC (ft)	NS (ft)	EW (ft)	DLS (°/100ft)	Northing (ftUS)	Easting (ftUS)	Latitude (°)	Longitude (°)
Projection to Bit	17097.00	90.52	270.51	6948.96	11166.63	-72.12	-11166.43	0.00	1395539.22	3175841.44	40.417438	-104.868468

Survey Type: Def Survey

Survey Error Model: ISCWSA Rev 0 *** 3-D 95.000% Confidence 2.7955 sigma
Survey Program:

Description	Part	MD From (ft)	MD To (ft)	EOU Freq (ft)	Hole Size	Casing Diameter (in)	Survey Tool Type	Borehole / Survey
	1	0.000	20.000	1/98.425	13.500	9.625	NAL_MWD_IFR1-Depth Only	Original Hole / Bost Farm 31N-11B-L IFR 0' to 17097' Definitive
	1	20.000	20.000	Act Stns	13.500	9.625	NAL_MWD_IFR1-Depth Only	Original Hole / Bost Farm 31N-11B-L IFR 0' to 17097' Definitive
	1	20.000	1829.000	Act Stns	13.500	9.625	NAL_MWD_IFR1	Original Hole / Bost Farm 31N-11B-L IFR 0' to 17097' Definitive
	1	1829.000	17097.000	Act Stns	8.500	5.500	NAL_MWD_IFR1+MS	Original Hole / Bost Farm 31N-11B-L IFR 0' to 17097' Definitive