



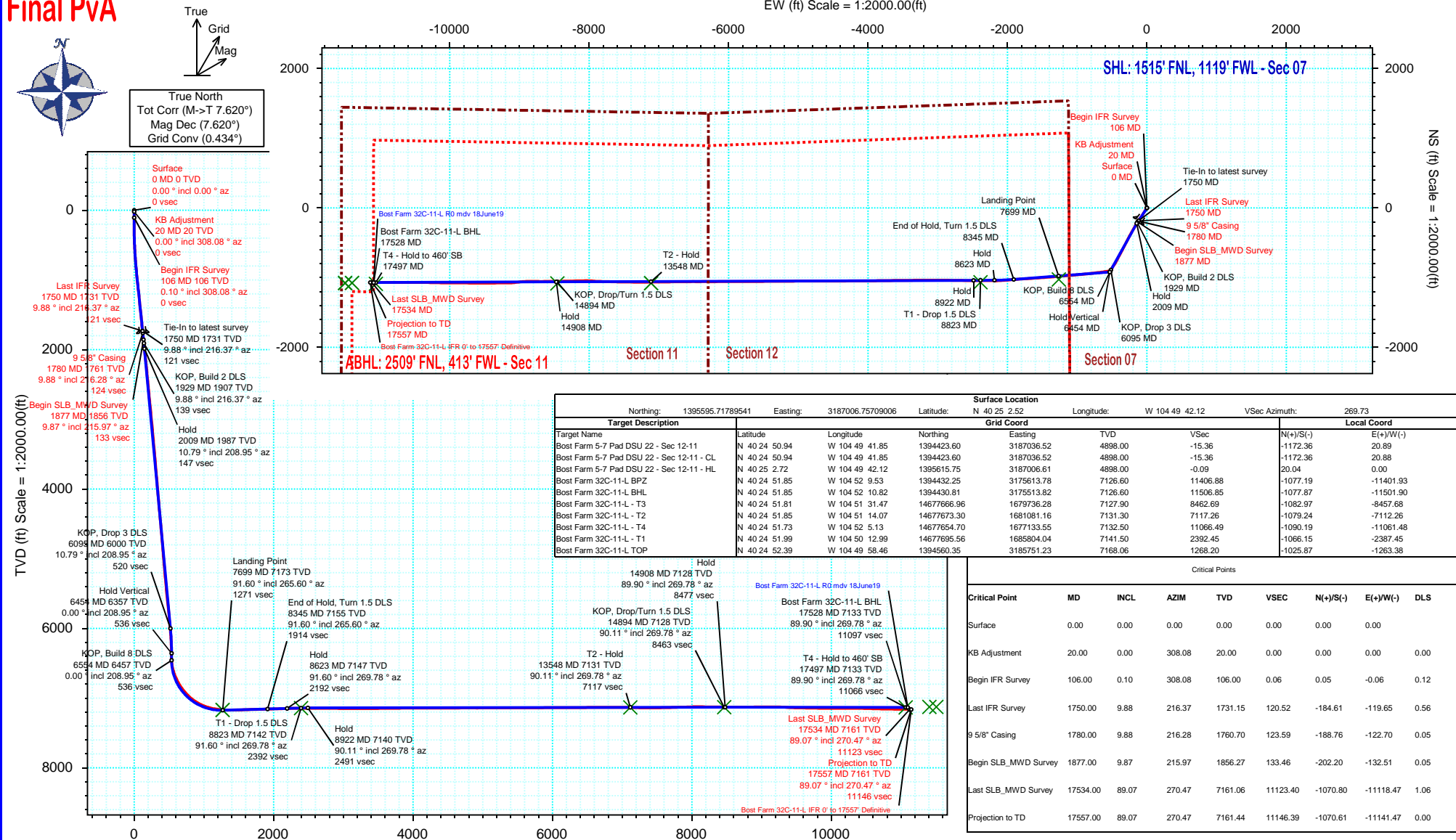
SRC Energy

Schlumberger

Borehole:	Well:	Field:	Structure:
Original Hole	Bost Farm 32C-11-L	CO, Weld County (NAD 83 NZ) - SRC	SRC Energy 07-05N-66W (Bost Farm 5-7 Pad DSU 22)

Gravity & Magnetic Parameters					Surface Location				NAD83 Colorado State Plane, Northern Zone, US Feet				Miscellaneous		
Model:	Surcon IFR	Dip:	66.62°	Date:	19-Jun-2019	Lat:	N 40 25 2.52	Northing:	1395595.72ftUS	Grid Conv:	0.434°	Slot:	Bost Farm 32C-11-L	TVD Ref:	KB 20ft(4898ft above MSL)
MagDec:	7.62°	FS:	52254nT	Gravity FS:	999.025mgn (9.80665 Based)	Lon:	W 104 49 42.12	Easting:	3187006.76ftUS	Scale Fact:	0.99996106	Plan:	Bost Farm 32C-11-L IFR 0' to 17557' Definitive		

Final PVA



Vertical Section (ft) Azim = 269.73° Scale = 1:2000.00(ft) Origin = 0N/-S, 0E/-W

Bost Farm 32C-11-L IFR 0' to 17557' Definitive Survey Geodetic Report

(Def Survey)

Report Date: July 01, 2019 - 03:51 PM
Client: SRC Energy
Field: CO, Weld County (NAD 83 NZ) - SRC
Structure / Slot: SRC Energy 07-05N-66W (Bost Farm 5-7 Pad DSU 22) / Bost Farm 32C-11-L
Well: Bost Farm 32C-11-L
Borehole: Original Hole
UWI / API#: Unknown / 05-123-47663
Survey Name: Bost Farm 32C-11-L IFR 0' to 17557' Definitive
Survey Date: May 23, 2019
Tort / AHD / DDI / ERD Ratio: 262.294 ° / 11676.217 ft / 6.875 / 1.628
Coordinate Reference System: NAD83 Colorado State Plane, Northern Zone, US Feet
Location Lat / Long: N 40° 25' 2.52480", W 104° 49' 42.12480"
Location Grid N/E Y/X: N 1395595.718 ftUS, E 3187006.757 ftUS
CRS Grid Convergence Angle: 0.4340 °
Grid Scale Factor: 0.99996106
Version / Patch: 2.10.760.0

Survey / DLS Computation: Minimum Curvature / Lubinski
Vertical Section Azimuth: 269.730 ° (True North)
Vertical Section Origin: 0.000 ft, 0.000 ft
TVD Reference Datum: KB 20ft
TVD Reference Elevation: 4898.000 ft above MSL
Seabed / Ground Elevation: 4878.000 ft above MSL
Magnetic Declination: 7.620 °
Total Gravity Field Strength: 999.0246mgn (9.80665 Based)
Gravity Model: GARM
Total Magnetic Field Strength: 52254.000 nT
Magnetic Dip Angle: 66.620 °
Declination Date: June 19, 2019
Magnetic Declination Model: Surcon IFR
North Reference: True North
Grid Convergence Used: 0.0000 °
Total Corr Mag North-True North: 7.6200 °
Local Coord Referenced To: Well Head

Comments	MD (ft)	Incl (°)	Azim True (°)	TVD (ft)	VSEC (ft)	NS (ft)	EW (ft)	DLS (°/100ft)	Northing (ftUS)	Easting (ftUS)	Latitude (°)	Longitude (°)
Surface	0.00	0.00	0.00	0.00	0.00	0.00	0.00	N/A	1395595.72	3187006.76	40.417368	-104.828368
KB Adjustment	20.00	0.00	308.08	20.00	0.00	0.00	0.00	0.00	1395595.72	3187006.76	40.417368	-104.828368
Begin IFR Survey	106.00	0.10	308.08	106.00	0.06	0.05	-0.06	0.12	1395595.76	3187006.70	40.417368	-104.828368
	191.00	0.35	315.52	191.00	0.30	0.28	-0.30	0.30	1395595.99	3187006.46	40.417369	-104.828369
	281.00	0.30	258.84	281.00	0.72	0.43	-0.72	0.35	1395596.14	3187006.03	40.417369	-104.828371
	370.00	1.85	205.81	369.98	1.58	-0.91	-1.58	1.90	1395594.80	3187005.19	40.417366	-104.828374
	460.00	3.43	210.48	459.88	3.60	-4.54	-3.58	1.77	1395591.15	3187003.22	40.417356	-104.828381
	550.00	5.01	214.17	549.64	7.20	-10.11	-7.15	1.78	1395585.55	3186999.69	40.417340	-104.828394
	640.00	7.04	210.09	639.13	12.21	-18.14	-12.12	2.30	1395577.49	3186994.77	40.417318	-104.828412
	730.00	8.66	211.42	728.29	18.55	-28.69	-18.42	1.81	1395566.89	3186988.56	40.417289	-104.828434
	820.00	10.14	211.32	817.08	26.26	-41.24	-26.07	1.64	1395554.28	3186981.00	40.417255	-104.828462
	910.00	10.10	214.71	905.68	34.94	-54.50	-34.68	0.66	1395540.96	3186972.49	40.417218	-104.828493
	1000.00	10.33	211.96	994.25	43.77	-67.83	-43.45	0.60	1395527.56	3186963.83	40.417182	-104.828524
	1090.00	11.19	212.75	1082.67	52.83	-82.02	-52.44	0.97	1395513.31	3186954.94	40.417143	-104.828556
	1180.00	11.16	211.60	1170.96	62.19	-96.78	-61.73	0.25	1395498.47	3186945.76	40.417102	-104.828590
	1270.00	11.18	214.15	1259.26	71.72	-111.42	-71.19	0.55	1395483.76	3186936.41	40.417062	-104.828624
	1360.00	11.10	213.70	1347.56	81.49	-125.85	-80.90	0.13	1395469.26	3186926.82	40.417023	-104.828659
	1450.00	10.76	213.14	1435.93	90.96	-140.09	-90.30	0.40	1395454.95	3186917.53	40.416983	-104.828692
	1540.00	10.20	212.00	1524.43	99.84	-153.89	-99.11	0.66	1395441.09	3186908.82	40.416946	-104.828724
	1630.00	10.23	212.80	1613.00	108.45	-167.36	-107.67	0.16	1395427.55	3186900.37	40.416909	-104.828755
	1720.00	10.03	215.94	1701.60	117.44	-180.43	-116.59	0.65	1395414.42	3186891.54	40.416873	-104.828787
Last IFR Survey 9 5/8" Casing Begin	1750.00	9.88	216.37	1731.15	120.52	-184.61	-119.65	0.56	1395410.21	3186888.51	40.416861	-104.828798
SLB_MWD Survey	1780.00	9.88	216.28	1760.70	123.59	-188.76	-122.70	0.05	1395406.04	3186885.49	40.416850	-104.828809
	1877.00	9.87	215.97	1856.27	133.46	-202.20	-132.51	0.05	1395392.53	3186875.79	40.416813	-104.828844
	1972.00	11.92	214.23	1949.55	143.83	-216.90	-142.81	2.19	1395377.75	3186865.60	40.416773	-104.828881
	2067.00	11.07	212.05	2042.64	154.26	-232.74	-153.17	1.00	1395361.83	3186855.36	40.416729	-104.828918
	2161.00	11.90	209.18	2134.76	163.85	-248.85	-162.68	1.07	1395345.65	3186845.97	40.416685	-104.828952
	2256.00	10.95	210.71	2227.88	173.32	-265.16	-172.07	0.65	1395329.27	3186836.71	40.416640	-104.828986
	2348.00	10.69	207.60	2318.24	181.80	-280.24	-180.48	1.09	1395314.14	3186828.41	40.416599	-104.829016
	2443.00	11.44	209.79	2411.48	190.64	-296.22	-189.25	0.90	1395298.08	3186819.77	40.416555	-104.829048
	2539.00	10.15	210.52	2505.77	199.74	-311.77	-198.27	1.35	1395282.47	3186810.86	40.416512	-104.829080
	2635.00	11.61	209.52	2600.05	208.87	-327.46	-207.33	1.53	1395266.71	3186801.92	40.416469	-104.829113
	2728.00	11.84	207.71	2691.11	217.99	-344.05	-216.38	0.47	1395250.05	3186793.00	40.416424	-104.829145
	2822.00	10.85	212.06	2783.27	227.25	-360.09	-225.56	1.39	1395233.94	3186783.94	40.416380	-104.829178
	2915.00	10.99	207.07	2874.59	236.00	-375.40	-234.24	1.03	1395218.57	3186775.38	40.416338	-104.829209
	3008.00	11.33	210.05	2965.83	244.69	-391.20	-242.85	0.72	1395202.70	3186766.89	40.416294	-104.829240
	3101.00	10.74	207.83	3057.11	253.38	-406.77	-251.47	0.78	1395187.07	3186758.39	40.416251	-104.829271
	3195.00	11.48	209.22	3149.35	262.11	-422.68	-260.12	0.84	1395171.09	3186749.86	40.416208	-104.829302
	3288.00	10.72	205.34	3240.61	270.40	-438.58	-268.34	1.15	1395155.14	3186741.76	40.416164	-104.829332
	3382.00	11.21	206.34	3332.89	278.28	-454.67	-276.14	0.56	1395138.99	3186734.08	40.416120	-104.829360
	3475.00	10.21	209.65	3424.27	286.44	-469.93	-284.23	1.26	1395123.66	3186726.11	40.416078	-104.829389
	3570.00	10.68	207.00	3517.70	294.67	-485.09	-292.39	0.71	1395108.44	3186718.06	40.416036	-104.829418
	3664.00	10.41	207.02	3610.11	302.55	-500.42	-300.20	0.29	1395093.06	3186710.37	40.415994	-104.829446
	3758.00	10.35	207.63	3702.57	310.40	-515.47	-307.97	0.13	1395077.95	3186702.71	40.415953	-104.829474
	3850.00	10.76	206.51	3793.02	318.14	-530.47	-315.64	0.50	1395062.89	3186695.16	40.415912	-104.829502
	3943.00	10.68	206.83	3884.39	325.97	-545.93	-323.40	0.11	1395047.37	3186687.51	40.415869	-104.829529
	4036.00	10.14	208.19	3975.86	333.80	-560.84	-331.16	0.64	1395032.41	3186679.87	40.415829	-104.829557
	4128.00	10.55	204.90	4066.37	341.24	-575.62	-338.53	0.78	1395017.58	3186672.87	40.415788	-104.829584
	4222.00	10.64	208.85	4158.77	349.13	-591.02	-346.34	0.78	1395002.11	3186664.91	40.415746	-104.829612
	4315.00	10.75	206.56	4250.15	357.22	-606.30	-354.36	0.47	1394986.78	3186657.01	40.415704	-104.829641
	4409.00	10.61	207.85	4342.52	365.25	-621.79	-362.33	0.29	1394971.22	3186649.16	40.415661	-104.829669
	4501.00	10.49	208.22	4432.97	373.24	-636.66	-370.24	0.15	1394956.30	3186641.36	40.415620	-104.829698
	4595.00	10.62	210.53	4525.38	381.76	-651.66	-378.69	0.47	1394941.23	3186633.03	40.415579	-104.829728
	4688.00	10.57	207.32	4616.79	390.10	-666.62	-386.96	0.64	1394926.21	3186624.87	40.415538	-104.829758
	4780.00	9.88	211.06	4707.33	398.11	-680.88	-394.90	1.04	1394911.89	3186617.04	40.415499	-104.829786
	4873.00	10.64	205.80	4798.85	406.03	-695.45	-402.76	1.30	1394897.27	3186609.29	40.415459	-104.829814
	4967.00	10.18	203.64	4891.30	413.21	-710.87	-409.87	0.64	1394881.79	3186602.30	40.415417	-104.829840
	5059.00	10.23	206.01	4981.84	420.12	-725.66	-416.71	0.46	1394866.95	3186595.57	40.415376	-104.829864
	5152.00	10.21	209.16	5073.37	427.83	-740.28	-424.35	0.60	1394852.28	3186588.05	40.415336	-104.829892
	5245.00	10.39	208.77	5164.87	435.95	-754.83	-432.40	0.21	1394837.67	3186580.11	40.415296	-104.829921
	5339.00	10.53	209.28	5257.31	444.30	-769.75	-440.68	0.18	1394822.68	3186571.94	40.415255	-104.829951
	5431.00	10.57	208.53	5347.75	452.51	-784.50	-448.82	0.16	1394807.88	3186563.91	40.415215	-104.829980
	5525.00	10.63	213.81	5440.15	461.52	-799.27	-457.76	1.03	1394793.03	3186555.08	40.415174	-104.830012
	5617.00	9.94	215.18	5530.67	470.88	-812.81	-467.06	0.80	1394779.42	3186545.89	40.415137	-104.830045
	5711.00	10.51	214.47	5623.18	480.48	-826.51	-476.59	0.62	1394765.65	3186536.46	40.415099	-104.830080
	5804.00	10.55	212.68	5714.61	489.94	-840.67	-485.98	0.35	1394751.42	3186527.17	40.415060	-104.830113
	5898.00	9.48	214.47	5807.18	499.03	-854.30	-495.01	1.19	1394737.73	3186518.25	40.415023	-104.830146
	5990.00	10.29	211.23	5897.81	507.64	-867.57	-503.56	1.07	1394724.39	3186509.80	40.414987	-104.830176
	6084.00	10.43	206.87	5990.28	515.91	-882.34	-511.76	0.85	1394709.56	3186501.72	40.414946	-104.830206
	6178.00	9.58	208.95	6082.85	523.61	-896.77	-519.39	0.98	1394695.07	3186494.19	40.414906	-104.830233
	6271.00	4.37	216.53	6175.13	529.52	-906.40	-525.25	5.68	1394680.40	3186488.41	40.414880	-104.830254
	6365.00	1.02	277.60	6269.03	532.49	-909.17	-528.21	4.23	1394662.61	3186485.47	40.414872	-104.830

Comments	MD (ft)	Incl (°)	Azim True (°)	TVD (ft)	VSEC (ft)	NS (ft)	EW (ft)	DLS (°/100ft)	Northing (ftUS)	Easting (ftUS)	Latitude (°)	Longitude (°)
	6738.00	18.84	265.34	6637.71	572.20	-908.49	-567.92	7.52	1394682.99	3186445.75	40.414874	-104.830408
	6832.00	25.01	259.07	6724.88	606.90	-913.49	-602.60	7.01	1394677.72	3186411.12	40.414861	-104.830532
	6926.00	31.90	262.03	6807.48	651.09	-920.72	-646.76	7.48	1394670.17	3186367.01	40.414841	-104.830691
	7020.00	38.78	263.30	6884.12	705.02	-927.60	-700.66	7.36	1394662.87	3186313.17	40.414822	-104.830884
	7113.00	44.30	263.51	6953.70	766.30	-934.68	-761.90	5.94	1394655.34	3186251.99	40.414802	-104.831104
	7206.00	51.97	263.50	7015.72	835.10	-942.50	-830.66	8.25	1394646.99	3186183.29	40.414781	-104.831351
	7299.00	60.25	264.21	7067.53	911.83	-950.74	-907.35	8.93	1394638.17	3186106.67	40.414758	-104.831626
	7392.00	68.66	264.97	7107.60	995.32	-958.62	-990.82	9.07	1394629.66	3186023.27	40.414737	-104.831926
	7484.00	74.61	265.40	7136.57	1082.32	-965.94	-1077.78	6.48	1394621.68	3185936.36	40.414717	-104.832238
	7577.00	82.35	265.14	7155.13	1173.10	-973.45	-1168.53	8.33	1394613.48	3185845.68	40.414696	-104.832564
	7669.00	83.59	264.30	7166.39	1264.06	-981.86	-1259.45	1.62	1394604.39	3185754.83	40.414673	-104.832891
	7764.00	90.99	265.70	7170.88	1358.56	-990.12	-1353.91	7.93	1394595.41	3185660.44	40.414650	-104.833230
	7857.00	90.70	266.34	7169.51	1451.36	-996.57	-1446.68	0.76	1394588.26	3185567.73	40.414632	-104.833563
	7949.00	91.65	265.72	7167.62	1543.15	-1002.94	-1538.44	1.23	1394581.20	3185476.02	40.414615	-104.833893
	8042.00	91.76	266.33	7164.85	1635.91	-1009.38	-1631.17	0.67	1394574.05	3185383.34	40.414597	-104.834226
	8134.00	91.96	266.59	7161.87	1727.71	-1015.06	-1722.95	0.36	1394567.68	3185291.62	40.414582	-104.834555
	8229.00	91.91	266.21	7158.66	1822.50	-1021.02	-1817.71	0.40	1394561.00	3185196.91	40.414565	-104.834896
	8322.00	91.34	265.73	7156.02	1915.26	-1027.56	-1910.44	0.80	1394553.76	3185104.23	40.414547	-104.835229
	8414.00	91.22	264.89	7153.97	2006.96	-1035.08	-2002.11	0.92	1394545.55	3185012.63	40.414527	-104.835558
	8508.00	91.58	266.17	7151.67	2100.68	-1042.40	-2095.79	1.41	1394537.52	3184919.01	40.414506	-104.835894
	8600.00	91.69	271.06	7149.04	2192.60	-1044.62	-2187.70	5.31	1394534.60	3184827.12	40.414500	-104.836224
	8693.00	91.93	270.62	7146.11	2285.53	-1043.26	-2280.64	0.54	1394535.26	3184734.18	40.414504	-104.836558
	8786.00	90.28	270.60	7144.31	2378.50	-1042.27	-2373.62	1.77	1394535.54	3184641.20	40.414507	-104.836892
	8880.00	89.20	269.77	7144.74	2472.49	-1041.97	-2467.61	1.45	1394535.13	3184547.21	40.414508	-104.837230
	8973.00	89.81	270.47	7145.54	2565.49	-1041.77	-2560.61	1.00	1394534.62	3184454.22	40.414508	-104.837564
	9067.00	89.82	270.71	7145.85	2659.48	-1040.80	-2654.00	0.26	1394534.88	3184360.22	40.414511	-104.837901
	9160.00	89.44	271.07	7146.45	2752.46	-1039.36	-2747.59	0.56	1394535.62	3184267.23	40.414515	-104.838235
	9253.00	89.82	271.05	7147.05	2845.43	-1037.64	-2840.57	0.41	1394536.64	3184174.24	40.414519	-104.838569
	9346.00	89.62	270.56	7147.50	2938.41	-1036.33	-2933.56	0.57	1394537.24	3184081.25	40.414523	-104.838903
	9440.00	89.63	269.86	7148.12	3032.40	-1035.99	-3027.56	0.74	1394536.87	3183987.26	40.414524	-104.839240
	9532.00	89.66	269.65	7148.69	3124.40	-1036.38	-3119.55	0.23	1394535.78	3183895.27	40.414523	-104.839571
	9625.00	89.74	269.50	7149.17	3217.40	-1037.07	-3212.55	0.18	1394534.39	3183802.29	40.414521	-104.839905
	9718.00	90.30	269.82	7149.14	3310.40	-1037.62	-3305.55	0.69	1394533.13	3183709.30	40.414519	-104.840239
	9811.00	90.38	268.94	7148.59	3403.40	-1038.63	-3398.54	0.95	1394531.42	3183616.32	40.414516	-104.840573
	9904.00	90.92	270.05	7147.54	3496.39	-1039.45	-3491.53	1.33	1394529.90	3183523.34	40.414514	-104.840907
	9996.00	90.56	268.89	7146.35	3588.38	-1040.30	-3583.53	1.32	1394528.35	3183431.37	40.414512	-104.841237
	10090.00	90.62	268.62	7145.38	3682.36	-1042.34	-3677.49	0.29	1394525.60	3183337.42	40.414506	-104.841574
	10183.00	90.63	269.82	7144.36	3775.35	-1043.61	-3770.47	1.29	1394523.62	3183244.45	40.414503	-104.841908
	10275.00	90.74	269.15	7143.26	3867.34	-1044.44	-3862.46	0.74	1394522.10	3183152.48	40.414500	-104.842239
	10367.00	90.05	269.79	7142.63	3959.34	-1045.29	-3954.45	1.02	1394520.55	3183060.50	40.414498	-104.842569
	10461.00	90.32	269.66	7142.33	4053.34	-1045.74	-4048.45	0.32	1394519.39	3182966.51	40.414497	-104.842907
	10554.00	90.17	270.16	7141.93	4146.33	-1045.88	-4141.45	0.56	1394518.54	3182873.52	40.414496	-104.843241
	10646.00	90.11	269.05	7141.70	4238.33	-1046.52	-4233.45	1.21	1394517.21	3182781.53	40.414494	-104.843571
	10739.00	90.18	268.98	7141.47	4331.32	-1048.12	-4326.43	0.11	1394514.91	3182688.56	40.414490	-104.843905
	10832.00	90.30	269.69	7141.08	4424.32	-1049.20	-4419.43	0.77	1394513.12	3182595.59	40.414487	-104.844239
	10925.00	89.93	269.52	7140.89	4517.32	-1049.84	-4512.42	0.44	1394511.78	3182502.60	40.414485	-104.844573
	11018.00	90.14	269.81	7140.84	4610.32	-1050.38	-4605.42	0.39	1394510.53	3182409.61	40.414484	-104.844907
	11111.00	90.14	269.82	7140.61	4703.32	-1050.68	-4698.42	0.01	1394509.52	3182316.62	40.414483	-104.845241
	11203.00	90.01	270.26	7140.49	4795.32	-1050.62	-4790.42	0.50	1394508.89	3182224.63	40.414483	-104.845571
	11296.00	89.83	269.90	7140.62	4888.32	-1050.49	-4883.42	0.43	1394508.32	3182131.63	40.414483	-104.845905
	11389.00	90.27	269.78	7140.54	4981.31	-1050.75	-4976.42	0.49	1394507.35	3182038.64	40.414482	-104.846239
	11483.00	90.25	269.45	7140.11	5075.31	-1051.38	-5070.42	0.35	1394506.01	3181944.66	40.414481	-104.846577
	11579.00	89.89	268.77	7139.99	5171.31	-1052.87	-5166.40	0.80	1394503.79	3181848.69	40.414477	-104.846921
	11671.00	90.45	270.36	7139.72	5263.30	-1053.57	-5258.40	1.83	1394502.40	3181756.71	40.414475	-104.847252
	11764.00	90.17	269.96	7139.22	5356.30	-1053.31	-5351.39	0.53	1394501.95	3181663.71	40.414475	-104.847586
	11857.00	90.06	269.11	7139.03	5449.30	-1054.06	-5444.39	0.92	1394500.49	3181570.73	40.414473	-104.847920
	11952.00	90.27	269.62	7138.76	5542.29	-1055.12	-5539.38	0.58	1394498.72	3181475.75	40.414470	-104.848261
	12045.00	90.56	270.10	7138.08	5637.29	-1055.34	-5632.38	0.60	1394497.79	3181382.76	40.414469	-104.848595
	12138.00	90.10	269.71	7137.55	5730.29	-1055.50	-5725.38	0.65	1394496.93	3181289.77	40.414469	-104.848929
	12232.00	90.04	269.46	7137.43	5824.29	-1056.18	-5819.38	0.27	1394495.54	3181195.79	40.414467	-104.849266
	12327.00	90.47	269.92	7137.01	5919.29	-1056.69	-5914.37	0.66	1394494.30	3181100.80	40.414466	-104.849607
	12513.00	90.27	269.62	7135.81	6105.28	-1057.44	-6100.37	0.19	1394492.15	3180914.82	40.414463	-104.850275
	12607.00	90.10	269.49	7135.51	6199.28	-1058.17	-6194.36	0.23	1394490.71	3180820.84	40.414461	-104.850613
	12699.00	90.49	270.67	7135.03	6291.28	-1058.04	-6286.36	1.35	1394490.14	3180728.85	40.414462	-104.850943
	12793.00	90.22	269.45	7134.45	6385.27	-1057.94	-6380.36	1.33	1394489.53	3180634.86	40.414462	-104.851281
	12886.00	90.32	270.47	7134.01	6478.27	-1058.01	-6473.36	1.10	1394488.76	3180541.87	40.414462	-104.851615
	12981.00	90.10	269.18	7133.66	6573.27	-1058.30	-6568.35	1.38	1394487.75	3180446.88	40.414461	-104.851956
	13074.00	90.11	269.47	7133.49	6666.26	-1059.39	-6661.35	0.31	1394485.95	3180353.90	40.414458	-104.852290
	13167.00	90.21	269.44	7133.23	6759.26	-1060.28	-6754.34	0.11	1394484.36	3180260.92	40.414455	-104.852624
	13260.00	89.91	269.13	7133.14	6852.26	-1061.44	-6847.33	0.46	1394482.49	3180167.94	40.414452	-104.852958
	13353.00	89.71	268.56	7133.44	6945.25	-1063.31	-6940.31	0.65	1394479.92	3180074.98	40.414447	-104.853292
	13445.00	90.03	270.52	7133.65	7037.24	-1064.05	-7032.31	2.16	1394478.48	3179983.00	40.414445	-104.853622
	13538.00	88.48	268.99	7134.86	7130.23	-1064.45	-7125.29	2.34	1394477.38	3179890.02	40.414443	-104.853956
	13631.00	88.51	268.95	7137.30	7223.19	-1066.12	-7218.24	0.05	1394475.00	3179797.09	40.414439	-104.854290
	13725.00	90.13	270.96	7138.42	7317.17	-1066.19	-7312.23	2.75	1394474.22	3179703.11	40.414438	-104.854627
	13818.00	90.00	271.11	7138.31	7410.15	-1064.51	-7405.21	0.21	1394475.19	3179610.12	40.414443	-104.854961
	13910.00	90.23	270.88	7138.13	7502.13	-1062.92	-7497.20	0.35	1394476.09	3179518.13	40.414447	-104.855292
	14003.00	91.55	270.95									

Comments	MD (ft)	Incl (°)	Azim True (°)	TVD (ft)	VSEC (ft)	NS (ft)	EW (ft)	DLS (°/100ft)	Northing (ftUS)	Easting (ftUS)	Latitude (°)	Longitude (°)
	16973.00	88.35	269.37	7150.28	10562.51	-1069.46	-10557.59	0.98	1394446.38	3176458.00	40.414426	-104.866282
	17066.00	88.57	270.33	7152.78	10655.48	-1069.70	-10650.56	1.06	1394445.43	3176365.04	40.414425	-104.866616
	17160.00	88.77	269.50	7154.97	10749.45	-1069.84	-10744.53	0.91	1394444.58	3176271.08	40.414425	-104.866953
	17252.00	89.13	270.31	7156.65	10841.44	-1069.99	-10836.51	0.96	1394443.73	3176179.10	40.414424	-104.867284
	17346.00	89.31	269.63	7157.93	10935.43	-1070.04	-10930.50	0.75	1394442.97	3176085.12	40.414424	-104.867621
	17440.00	88.90	269.49	7159.40	11029.41	-1070.76	-11024.49	0.46	1394441.53	3175991.14	40.414422	-104.867959
Last SLB_MWD Survey	17534.00	89.07	270.47	7161.06	11123.40	-1070.80	-11118.47	1.06	1394440.79	3175897.17	40.414422	-104.868296
Projection to TD	17557.00	89.07	270.47	7161.44	11146.39	-1070.61	-11141.47	0.00	1394440.80	3175874.17	40.414422	-104.868379

Survey Type: Def Survey

Survey Error Model: ISCWSA Rev 0 *** 3-D 95.000% Confidence 2.7955 sigma
Survey Program:

Description	Part	MD From (ft)	MD To (ft)	EOU Freq (ft)	Hole Size	Casing Diameter (in)	Survey Tool Type	Borehole / Survey
	1	0.000	20.000	1/98.425	13.500	9.625	NAL_MWD_IFR1-Depth Only	Original Hole / Bost Farm 32C-11- L IFR 0' to 17557' Definitive
	1	20.000	20.000	Act Stns	13.500	9.625	NAL_MWD_IFR1-Depth Only	Original Hole / Bost Farm 32C-11- L IFR 0' to 17557' Definitive
	1	20.000	1780.000	Act Stns	13.500	9.625	NAL_MWD_IFR1	Original Hole / Bost Farm 32C-11- L IFR 0' to 17557' Definitive
	1	1780.000	17557.000	Act Stns	8.500	5.500	NAL_MWD_IFR1+MS	Original Hole / Bost Farm 32C-11- L IFR 0' to 17557' Definitive