

HALLIBURTON

iCem[®] Service

CONOCO/PHILLIPS COMPANY EBUSINESS

Date: Wednesday, April 10, 2019

Prosper Farms 4-65 11-12 3AH Surface

Job Date: Friday, February 22, 2019

Sincerely,

Bryce Hinsch

Legal Notice

Disclaimer:

All information in this report is provided subject to the terms and conditions which govern the services provided by Halliburton. Halliburton personnel use their best efforts in gathering information and their best judgment in interpreting it, but any interpretation, research, analysis or recommendation furnished by Halliburton are opinions based upon inferences from measurements and empirical relationships and assumptions, which inferences and empirical relationships and assumptions are not infallible, and with respect to which professionals in the industry may differ. iCem 3D Displacement results are used to understand how fluids intermix during a cement job. Simulation and 3D displacement results are not intended as and should not be used as a replacement for bond logs in determining top of cement. Current 3D model calculations are known to model more volume than the input volume for standard cases due to known calculation improvements required. For rotational cases, the modeled volume will be impacted by the same calculations impacting the standard cases, as well as additional constraints imposed to make the calculation time required operationally feasible. Therefore, until further notice, 3D displacement results should not be used for replacement of a bond log, or used as an identifier of top of cement. HALLIBURTON IS UNABLE TO GUARANTEE THE ACCURACY OF ANY CHART INTERPRETATION, RESEARCH ANALYSIS, OR JOB RECOMMENDATION and any interpretation or recommendation is not for use of or reliance upon by any third party. The customer has full responsibility for any of its decisions which are based on the information provided in this report.

Table of Contents

1.0 Cementing Job Summary 4

 1.1 Executive Summary4

2.0 Real-Time Job Summary 9

 2.1 Job Event Log9

3.0 Attachments..... 11

 3.1 Conoco Prosper Farms 4-65 11-12 3AH Surface Chart11

1.0 Cementing Job Summary

1.1 Executive Summary

Halliburton appreciates the opportunity to perform the cementing services on the **Prosper Farms 4-65 11-12 3AH** cement **surface** casing job. A pre-job safety meeting was held before the job where details of the job were discussed, potential safety hazards were reviewed, and environmental compliance procedures were outlined.

Approximately 85 bbls of cement were returned to surface.

Halliburton maintains a continuous quality improvement process and appreciates any comments or suggestions that you may have. Halliburton again thanks you for the opportunity to perform service work on this well. We hope to be your solutions provider for future projects.

Respectfully,

Halliburton Fort Lupton

The Road to Excellence Starts with Safety

Sold To #: 352431		Ship To #: 3899034		Quote #: 0022543696		Sales Order #: 0905498262				
Customer: CONOCO/PHILLIPS COMPANY-EBUS				Customer Rep: JASON BEACH						
Well Name: PROSPER FARMS 4-65 11-12			Well #: 3AH		API/UWI #: 05-005-07383-00					
Field: WILDCAT		City (SAP): WATKINS		County/Parish: ARAPAHOE		State: COLORADO				
Legal Description: NW SW-11-4S-65W-2356FSL-490FWL										
Contractor:				Rig/Platform Name/Num: Nabors B16						
Job BOM: 7521 7521										
Well Type: HORIZONTAL OIL										
Sales Person: HALAMERICA\HB41307				Srv Supervisor: Vitali Neverdasov						
Job										
Formation Name										
Formation Depth (MD)		Top		Bottom						
Form Type				BHST						
Job depth MD		2239ft		Job Depth TVD		2250				
Water Depth				Wk Ht Above Floor						
Perforation Depth (MD)		From		To						
Well Data										
Description	New / Used	Size in	ID in	Weight lbm/ft	Thread	Grade	Top MD ft	Bottom MD ft	Top TVD ft	Bottom TVD ft
Casing		16	15.25				0	100		
Casing	0	9.625	8.921	36	STC	J-55	0	2239	0	2239
Open Hole Section			13.5				100	2250	0	2250
Tools and Accessories										
Type	Size in	Qty	Make	Depth ft		Type	Size in	Qty	Make	
Guide Shoe	9.625					Top Plug	9.625	1	HES	
Float Shoe	9.625	1	N/A	2239		Bottom Plug	9.625	1	HES	
Float Collar	9.625	1	N/A	2193		SSR plug set	9.625			
Insert Float	9.625					Plug Container	9.625	1	HES	
Stage Tool	9.625					Centralizers	9.625	18	N/A	
Fluid Data										
Stage/Plug #: 1										
Fluid #	Stage Type	Fluid Name	Qty	Qty UoM	Mixing Density lbm/gal	Yield ft3/sack	Mix Fluid Gal	Rate bbl/min	Total Mix Fluid Gal	
1	10 lb/gal Tuned Spacer III	Tuned Spacer III	50	bbl	10	8.97		4		
38.40 gal/bbl		FRESH WATER								
62.54 lbm/bbl		BARITE, BULK (100003681)								

Fluid #	Stage Type	Fluid Name	Qty	Qty UoM	Mixing Density lbm/gal	Yield ft3/sack	Mix Fluid Gal	Rate bbl/min	Total Mix Fluid Gal
2	SwiftCem	SWIFTCEM (TM) SYSTEM	490	sack	12	2.57		7	15.14
94 lbm		TYPE I / II CEMENT, BULK (101439798)							
15.12 Gal		FRESH WATER							
Fluid #	Stage Type	Fluid Name	Qty	Qty UoM	Mixing Density lbm/gal	Yield ft3/sack	Mix Fluid Gal	Rate bbl/min	Total Mix Fluid Gal
3	SwiftCem	SWIFTCEM (TM) SYSTEM	255	sack	14.2	1.59		6	7.9
94 lbm		CMT - PREMIUM - CLASS G REG OR TYPE V, BULK (100003685)							
7.90 Gal		FRESH WATER							
Fluid #	Stage Type	Fluid Name	Qty	Qty UoM	Mixing Density lbm/gal	Yield ft3/sack	Mix Fluid Gal	Rate bbl/min	Total Mix Fluid Gal
4	Displacement	Displacement	169	bbl	8.33			8	
Cement Left In Pipe		Amount	46 ft		Reason			Shoe Joint	
Comment : 85 BBLS OF CEMENT BACK TO SURFACE									

HALLIBURTON

Rockies, Brighton

Lab Results- Lead

Job Information

Request/Slurry	2536719/1	Rig Name	Nabors B16	Date	20/FEB/2019
Submitted By	Bryce Hinsch	Job Type	Surface Casing	Bulk Plant	Brighton
Customer	ConocoPhillips	Location		Well	Prosper Farms 4-65 11-12 3AH

Well Information

Casing/Liner Size	9.625 in	Depth MD	2147 ft	BHST	35°C / 95°F
Hole Size	13.5 in	Depth TVD	2147 ft	BHCT	34°C / 93°F
Pressure	1214 psi				

Cement Information - Lead Design

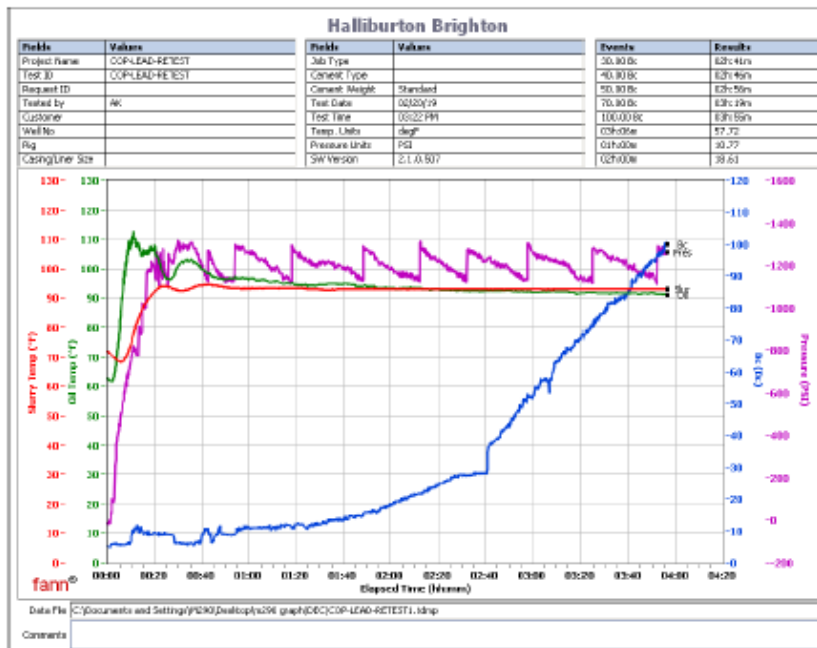
Conc	UOM	Cement/Additive	MP	Sample Type	Sample Date	Lot No.	Cement Properties	
100	% BWOC	Cemex Type I-II		Bulk Blend	21.02.19	2242x2, 6493	Slurry Density	12 lbm/gal
15.14	gal/sack	Field (Fresh) Water		Lab	09.10.18	8/19/2018	Slurry Yield	2.57 ft ³ /sack
2	% BWOC	Cal-Seal 60	PB	Bulk Blend	21.02.19	12/12/18	Water Requirement	15.14 gal/sack
2.3	% BWOC	Econolite (Powder - PB)	PB	Bulk Blend	21.02.19	U110118		
0.2	% BWOC	VERSASET (PB)	PB	Bulk Blend	21.02.19	2018-9-1		
6	lb/sk	Mountain Enhancer 923	PB	Bulk Blend	21.02.19			

Operation Test Results Request ID 2536719/1

Thickening Time, Request Test ID:36256019

21/FEB/2019

Temp (degF)	Pressure (psi)	Reached in (min)	Start BC	30 Bc (hh:mm)	40 Bc (hh:mm)	50 Bc (hh:mm)	70 Bc (hh:mm)	100 Bc (hh:mm)
93	1214	18	8:7	2:41	2:46	2:56	3:19	3:55



This report is the property of Halliburton Energy Services and neither it nor any part thereof, nor a copy thereof, is to be published or disclosed without first securing the expressed written approval of Halliburton. It may however be used in the course of regular business operations by any person or concern receiving such report from Halliburton. This report is for information purposes only and the content is limited to the sample described. Halliburton makes no warranties, expressed or implied, as to the accuracy of the contents or results. Any user of this report agrees Halliburton shall not be liable for any loss or damage regardless of cause, including any act or omission of Halliburton, resulting from the use hereof.

HALLIBURTON

Rockies, Brighton

Lab Results- Tail

Job Information

Request/Slurry	2536720/1	Rig Name	Nabors B16	Date	20/FEB/2019
Submitted By	Bryce Hinsch	Job Type	Surface Casing	Bulk Plant	Brighton
Customer	ConocoPhillips	Location		Well	Prosper Farms 4-65 11-12 3AH

Well Information

Casing/Liner Size	9.625 in	Depth MD	2147 ft	BHST	35°C / 95°F
Hole Size	13.5 in	Depth TVD	2147 ft	BHCT	34°C / 93°F
Pressure	1214 psi				

Cement Information - Tail Design

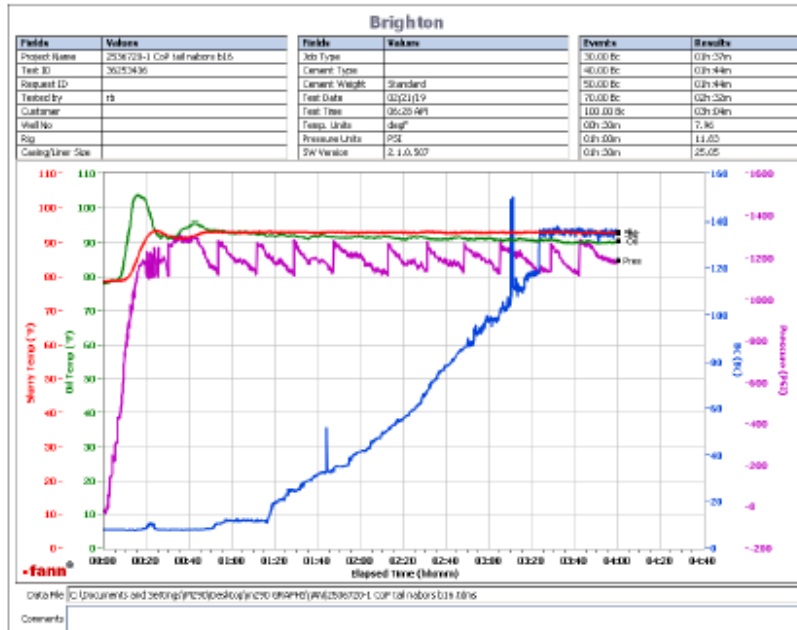
Conc	UOM	Cement/Additive	MP	Sample Type	Sample Date	Lot No.	Cement Properties		
100	% BWOC	Mountain G		Bulk Blend	21.02.19	T1	Slurry Density	14.2	lbm/gal
7.9	gal/sack	Field (Fresh) Water		Lab	09.10.18	8/19/2018	Slurry Yield	1.59	ft ³ /sack
2	% BWOC	Cal-Seal 60	PB	Bulk Blend	21.02.19		Water Requirement	7.9	gal/sack
1.3	% BWOC	Econolite (Powder - PB)	PB	Bulk Blend	21.02.19	u110118			
0.2	% BWOC	VERSASET (PB)	PB	Bulk Blend	21.02.19	2018-9-1			
6	lb/sk	Mountain Enhancer 923	PB	Bulk Blend	21.02.19				

Operation Test Results Request ID 2536720/1

Thickening Time, Request Test ID:36253435

21/FEB/2019

Temp (degF)	Pressure (psi)	Reached in (min)	Start BC	30 Bc (hh:mm)	40 Bc (hh:mm)	50 Bc (hh:mm)	70 Bc (hh:mm)	100 Bc (hh:mm)
93	1214	18	8	1:37	1:44	1:44	2:32	3:04



This report is the property of Halliburton Energy Services and neither it nor any part thereof, nor a copy thereof, is to be published or disclosed without first securing the expressed written approval of Halliburton. It may however be used in the course of regular business operations by any person or concern receiving such report from Halliburton. This report is for information purposes only and the content is limited to the sample described. Halliburton makes no warranties, expressed or implied, as to the accuracy of the contents or results. Any user of this report agrees Halliburton shall not be liable for any loss or damage regardless of cause, including any act or omission of Halliburton, resulting from the use hereof.

2.0 Real-Time Job Summary

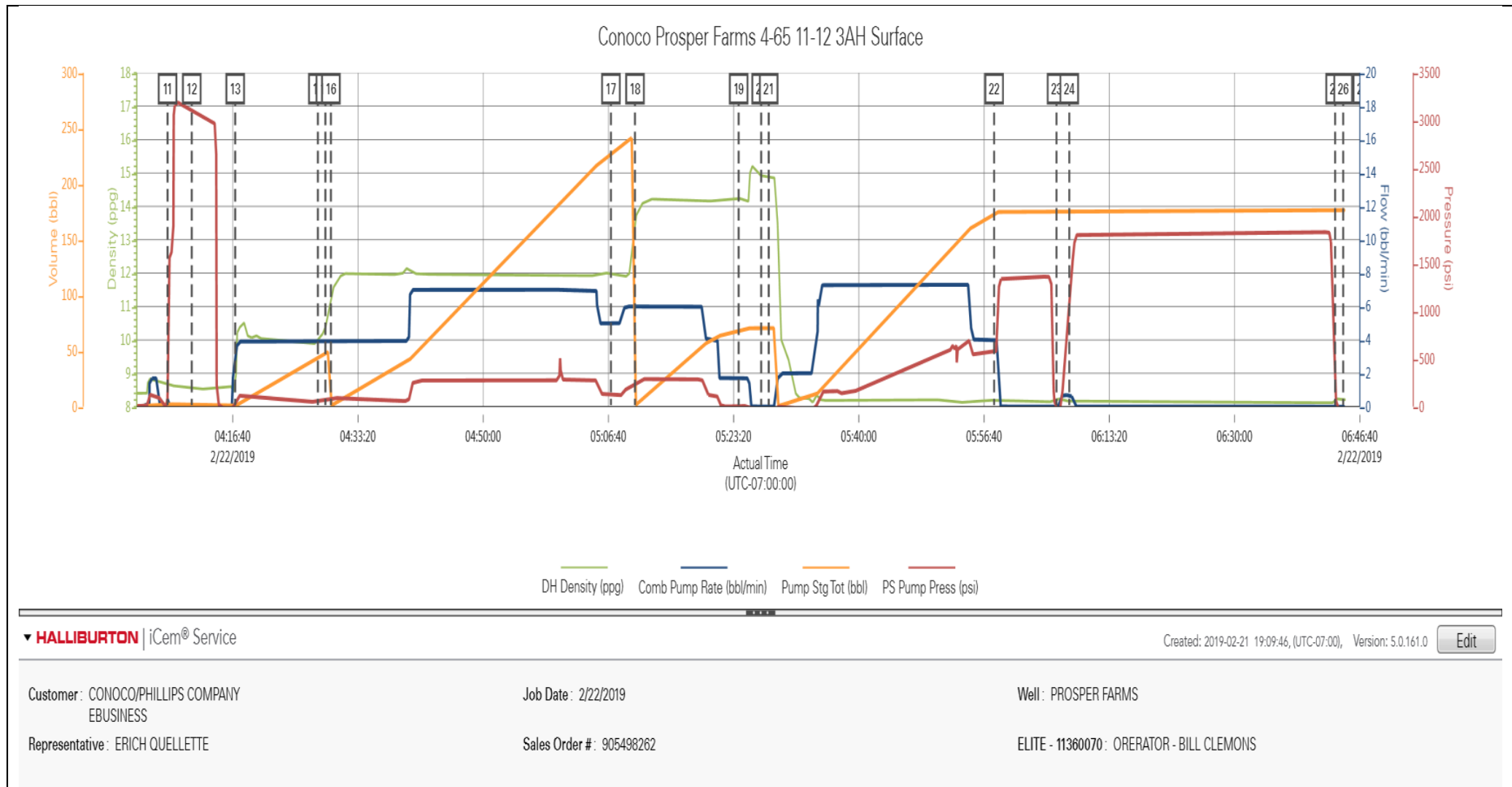
2.1 Job Event Log

Type	Seq. No.	Activity	Graph Label	Date	Time	Source	DH Density (ppg)	Comb Pump Rate (bbl/min)	Pump Stg Tot (bbl)	PS Pump Press (psi)	Comments
Event	1	Call Out	Call Out	2/21/2019	15:30:00	USER					For Location @ 21:00
Event	2	Depart from Service Center or Other Site	Depart from Service Center or Other Site	2/21/2019	19:30:00	USER					CREW WAS STAGED UP NEAR LOCATION
Event	3	Arrive at Location from Service Center	Arrive at Location from Service Center	2/21/2019	20:00:00	USER					38 MILES. DISCUSS NUMBERS AND PROCEDURE WITH CUSTOMER. RIG IS RUNNING CASING.
Event	4	Safety Meeting - Pre Rig-Up	Safety Meeting - Pre Rig-Up	2/21/2019	20:40:00	USER					JSA to discuss the hazards of rig-up
Event	5	Rig-Up Equipment	Rig-Up Equipment	2/21/2019	20:50:00	USER					Rig-up all surface lines and equipmnet up to the Buffer zone
Event	6	Casing on Bottom	Casing on Bottom	2/22/2019	02:35:00	USER	0.03	0.00	0.00	3.00	Landing joint brought to floor and landed
Event	7	Circulate Well	Circulate Well	2/22/2019	02:50:00	USER	0.04	0.00	0.00	2.00	RIG UP CEMENT HEAD AND MANIFOLD FOR RIG TO CIRCULATE.
Event	8	Pre-Job Safety Meeting	Pre-Job Safety Meeting	2/22/2019	03:29:00	USER	0.04	0.00	0.00	3.00	With all Personall, to discuss the hazards of pumping the job, and pump schedule.
Event	9	Start Job	Start Job	2/22/2019	04:01:00	USER	8.41	0.00	10.50	1.00	
Event	10	Start Job	Start Job	2/22/2019	04:02:04	COM4	8.41	0.10	0.00	1.00	
Event	11	Test Lines	Test Lines	2/22/2019	04:08:00	USER	8.70	0.30	2.10	1512.00	Test lines @ 2590 psi
Event	12	Check Weight	Check Weight	2/22/2019	04:11:13	COM4	8.58	0.00	2.10	3090.00	
Event	13	Pump Spacer	Pump Spacer	2/22/2019	04:17:00	USER	8.72	2.20	0.70	33.00	BATCH/ WEIGHT/ PUMP 50

											BBLS OF SPACER @ 10 PPG.
Event	14	Drop Bottom Plug	Drop Bottom Plug	2/22/2019	04:28:00	USER	9.99	3.90	43.80	55.00	DROP BOTTOM PLUG ON THE FLY 47 BBLS INTO SPACER.
Event	15	Pump Lead Cement	Pump Lead Cement	2/22/2019	04:29:00	USER	10.37	3.90	47.80	71.00	BATCH/ WEIGHT/PUMP 490 sks(224.3 bbls) of Lead Swiftcem @ 12.0 ppg, verified with pressurized scales
Event	16	Check Weight	Check Weight	2/22/2019	04:29:44	COM4	11.27	3.90	0.90	78.00	
Event	17	Pump Tail Cement	Pump Tail Cement	2/22/2019	05:07:00	USER	11.97	5.00	226.60	125.00	BATCH/WEIGHT/PUMP 255 SKS (72.2 BBLS) OF TAIL CEMENT @ 14.2 PPG.
Event	18	Check Weight	Check Weight	2/22/2019	05:10:12	COM4	13.56	6.00	1.00	257.00	
Event	19	Shutdown	Shutdown	2/22/2019	05:24:00	USER	14.24	1.70	68.10	4.00	Finished pumping cement
Event	20	Drop Top Plug	Drop Top Plug	2/22/2019	05:27:00	USER	14.92	0.00	70.60	-39.00	Pre-loaded top plug in plug container verified by customer rep.
Event	21	Pump Displacement - Start	Pump Displacement - Start	2/22/2019	05:28:00	USER	14.87	0.00	70.60	-41.00	169.5 bbls fresh water. Washing up on top of the plug.
Event	22	Bump Plug	Bump Plug	2/22/2019	05:58:00	USER	8.19	4.00	173.10	568.00	@500 psi over final circulating pressure of 615 psi
Event	23	Check Floats	Check Floats	2/22/2019	06:06:18	USER	8.23	0.00	175.30	-22.00	Floats held. 1 bbls back
Event	24	Event	Event	2/22/2019	06:08:00	USER	8.18	0.70	176.20	1115.00	PRESSURE UP 1800 PSI FOR 30 MIN CASING TEST.
Event	25	Event	Event	2/22/2019	06:43:23	USER	8.24	0.00	176.60	149.00	BLEED OFF PRESSURE.
Event	26	End Job	End Job	2/22/2019	06:44:27	COM4	8.21	0.00	176.60	-38.00	
Event	27	Pre-Rig Down Safety Meeting	Pre-Rig Down Safety Meeting	2/22/2019	06:47:00	USER					JSA to discuss the hazards of rig-down

3.0 Attachments

3.1 Conoco Prosper Farms 4-65 11-12 3AH Surface Chart



HALLIBURTON

iCem[®] Service

CONOCO/PHILLIPS COMPANY EBUSINESS

Date: Monday, March 18, 2019

Prosper Farms 4-65 11-12 3AH Production

Job Date: Thursday, February 28, 2019

Sincerely,
Tyler Hill

Legal Notice

Disclaimer:

All information in this report is provided subject to the terms and conditions which govern the services provided by Halliburton. Halliburton personnel use their best efforts in gathering information and their best judgment in interpreting it, but any interpretation, research, analysis or recommendation furnished by Halliburton are opinions based upon inferences from measurements and empirical relationships and assumptions, which inferences and empirical relationships and assumptions are not infallible, and with respect to which professionals in the industry may differ. iCem 3D Displacement results are used to understand how fluids intermix during a cement job. Simulation and 3D displacement results are not intended as and should not be used as a replacement for bond logs in determining top of cement. Current 3D model calculations are known to model more volume than the input volume for standard cases due to known calculation improvements required. For rotational cases, the modeled volume will be impacted by the same calculations impacting the standard cases, as well as additional constraints imposed to make the calculation time required operationally feasible. Therefore, until further notice, 3D displacement results should not be used for replacement of a bond log, or used as an identifier of top of cement. HALLIBURTON IS UNABLE TO GUARANTEE THE ACCURACY OF ANY CHART INTERPRETATION, RESEARCH ANALYSIS, OR JOB RECOMMENDATION and any interpretation or recommendation is not for use of or reliance upon by any third party. The customer has full responsibility for any of its decisions which are based on the information provided in this report.

Table of Contents

1.0 Cementing Job Summary 4

 1.1 Executive Summary4

2.0 Real-Time Job Summary 11

 2.1 Job Event Log11

3.0 Attachments..... 13

 3.1 Prosper Farms 4-65 11-12 3AH Production.png.....13

1.0 Cementing Job Summary

1.1 Executive Summary

Halliburton appreciates the opportunity to perform the cementing services on the **Prosper Farms 4-65 11-12 3AH** cement **Production** casing job. A pre-job safety meeting was held before the job where details of the job were discussed, potential safety hazards were reviewed, and environmental compliance procedures were outlined.

Approximately 26 bbls of spacer were returned to surface.

Halliburton maintains a continuous quality improvement process and appreciates any comments or suggestions that you may have. Halliburton again thanks you for the opportunity to perform service work on this well. We hope to be your solutions provider for future projects.

Respectfully,

Halliburton Ft. Lupton

The Road to Excellence Starts with Safety

Sold To #: 352431		Ship To #: 3899034		Quote #: 0022543509		Sales Order #: 0905512207				
Customer: CONOCO/PHILLIPS COMPANY-EBUS				Customer Rep: ERICH QUELLETTE						
Well Name: PROSPER FARMS 4-65 11-12			Well #: 3AH		API/UWI #: 05-005-07383-00					
Field: WILDCAT		City (SAP): WATKINS		County/Parish: ARAPAHOE		State: COLORADO				
Legal Description: NW SW-11-4S-65W-2356FSL-490FWL										
Contractor:				Rig/Platform Name/Num: Nabors B16						
Job BOM: 7523 7523										
Well Type: HORIZONTAL OIL										
Sales Person: HALAMERICA\HB41307				Srv Supervisor: Vitali Neverdasov						
Job										
Formation Name										
Formation Depth (MD)		Top		Bottom						
Form Type				BHST						
Job depth MD		17811ft		Job Depth TVD		7813				
Water Depth				Wk Ht Above Floor						
Perforation Depth (MD)		From		To						
Well Data										
Description	New / Used	Size in	ID in	Weight lbm/ft	Thread	Grade	Top MD ft	Bottom MD ft	Top TVD ft	Bottom TVD ft
Casing		9.625	8.921	36	STC	J-55	0	2239		
Casing	0	5.5	4.778	20	TXP-BTC	P-110	0	17805	0	7813
Open Hole Section			8.5				2239	17827	2239	7813
Tools and Accessories										
Type	Size in	Qty	Make	Depth ft		Type	Size in	Qty	Make	
Guide Shoe	5.5					Top Plug	5.5	1	INNOVEX	
Float Shoe	5.5	1	N/A	17811		Bottom Plug	5.5	1	INNOVEX	
Float Collar	5.5	1	N/A	17734		SSR plug set	5.5			
Insert Float	5.5					Plug Container	5.5	1	HES	
Stage Tool	5.5					Centralizers	5.5	426	N/A	
Fluid Data										
Stage/Plug #: 1										
Fluid #	Stage Type	Fluid Name	Qty	Qty UoM	Mixing Density lbm/gal	Yield ft3/sack	Mix Fluid Gal	Rate bbl/min	Total Mix Fluid Gal	
1	10.5 lb/gal Tuned Spacer III	Tuned Spacer III	60	bbl	10.5	6.62		4		
0.6670 gal/bbl		MUSOL(R) A, 5 GAL PAIL (100064220)								
37.58 gal/bbl		FRESH WATER								

84.77 lbm/bbl		BARITE, BULK (100003681)							
0.6670 gal/bbl		DUAL SPACER SURFACTANT B, 5 GAL PAIL (100003665)							
Fluid #	Stage Type	Fluid Name	Qty	Qty UoM	Mixing Density lbm/gal	Yield ft3/sack	Mix Fluid Gal	Rate bbl/min	Total Mix Fluid Gal
2	ElastiCem	ELASTICEM (TM) SYSTEM	835	sack	13.2	1.57		7.5	7.54
24.50 lbm		POZMIX A FLYASH (100003690)							
7.54 Gal		FRESH WATER							
Fluid #	Stage Type	Fluid Name	Qty	Qty UoM	Mixing Density lbm/gal	Yield ft3/sack	Mix Fluid Gal	Rate bbl/min	Total Mix Fluid Gal
3	EconoCem	ECONOCER (TM) SYSTEM	1490	sack	13.5	1.79		7	8.73
0.30 %		HR-5, 50 LB SK (100005050)							
8.73 Gal		FRESH WATER							
61.10 lbm		TYPE I / II CEMENT, BULK (101439798)							
Fluid #	Stage Type	Fluid Name	Qty	Qty UoM	Mixing Density lbm/gal	Yield ft3/sack	Mix Fluid Gal	Rate bbl/min	Total Mix Fluid Gal
4	MMCR Displacement	MMCR Displacement	40	bbl	8.34			8	
0.50 gal/bbl		MICRO MATRIX CEMENT RETARDER, 5 GAL PAIL (100003781)							
Fluid #	Stage Type	Fluid Name	Qty	Qty UoM	Mixing Density lbm/gal	Yield ft3/sack	Mix Fluid Gal	Rate bbl/min	Total Mix Fluid Gal
5	Water	Water	355	bbl	8.33			8	
Cement Left In Pipe		Amount	77 ft		Reason			Shoe Joint	
Comment : 26 BBLS OF SPACER BACK TO SURFACE. ESTIMATED TOP OF LEAD @ 711'. TOP OF TAIL @ 6169'. AT THE BEGINNING OF THE JOB LOST COMMUNICATION WITH PUMP TRUCK. GOT COMMUNICATION BACK AT THE BEGGINNING OF LEAD. COULD NOT RETRIEVE FULL FILE FROM FLEX.									

HALLIBURTON

Rockies, Brighton

Lab Results- Lead

Job Information

Request/Slurry	2537235/2	Rig Name	Nabors B16	Date	22/FEB/2019
Submitted By	Tyler Hill	Job Type	Production Casing	Bulk Plant	Brighton
Customer	ConocoPhillips	Location	Weld	Well	Prosper Farms 4-65 11-12 3AH

Well Information

Casing/Liner Size	5.5 in	Depth MD	17841 ft	BHST	104°C / 219°F
Hole Size	8.5 in	Depth TVD	7806 ft	BHCT	104°C / 219°F
Pressure	4764 psi				

Cement Information - Lead Design

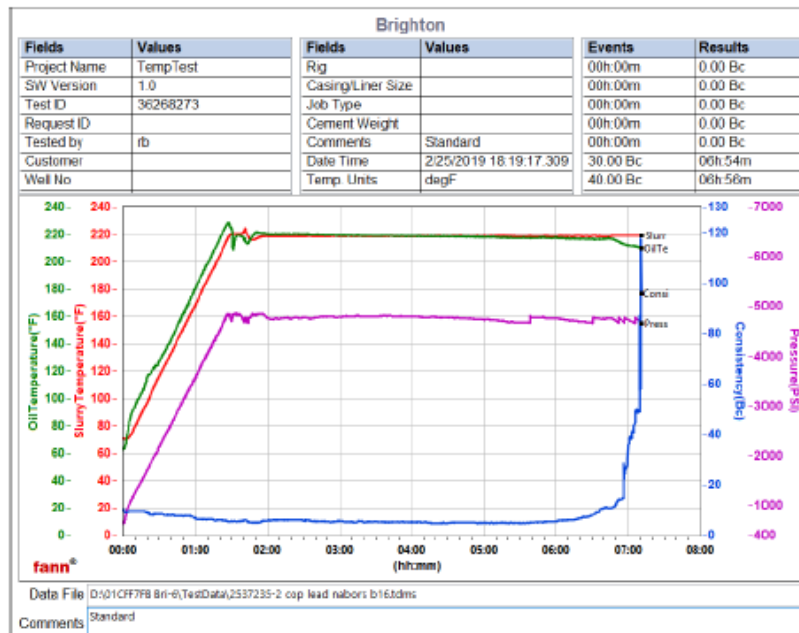
Conc	UOM	Cement/Additive	MP	Sample Type	Sample Date	Lot No.	Cement Properties		
100	% BWOC	Cement Blend					Slurry Density	13.2	lbm/gal
7.54	gal/sack	Field (Fresh) Water		Lab	09.10.18	8/19/2018	Slurry Yield	1.57	ft ³ /sack
5	lb/sk	WellLife 708 (PB)	PB	Bulk Blend	26.02.19		Water Requirement	7.54	gal/sack
0.1	% BWOC	SA-1015 (PB)	PB	Bulk Blend	26.02.19	8F3692w			
0.35	% BWOC	SCR-100 (PB)	PB	Bulk Blend	26.02.19	ct18129001			
1	lb/sk	Silicalite - Compacted	PB	Bulk Blend	26.02.19				
0.2	% BWOC	HALAD-344 (PB)	PB	Bulk Blend	26.02.19	20181142			

Operation Test Results Request ID 2537235/2

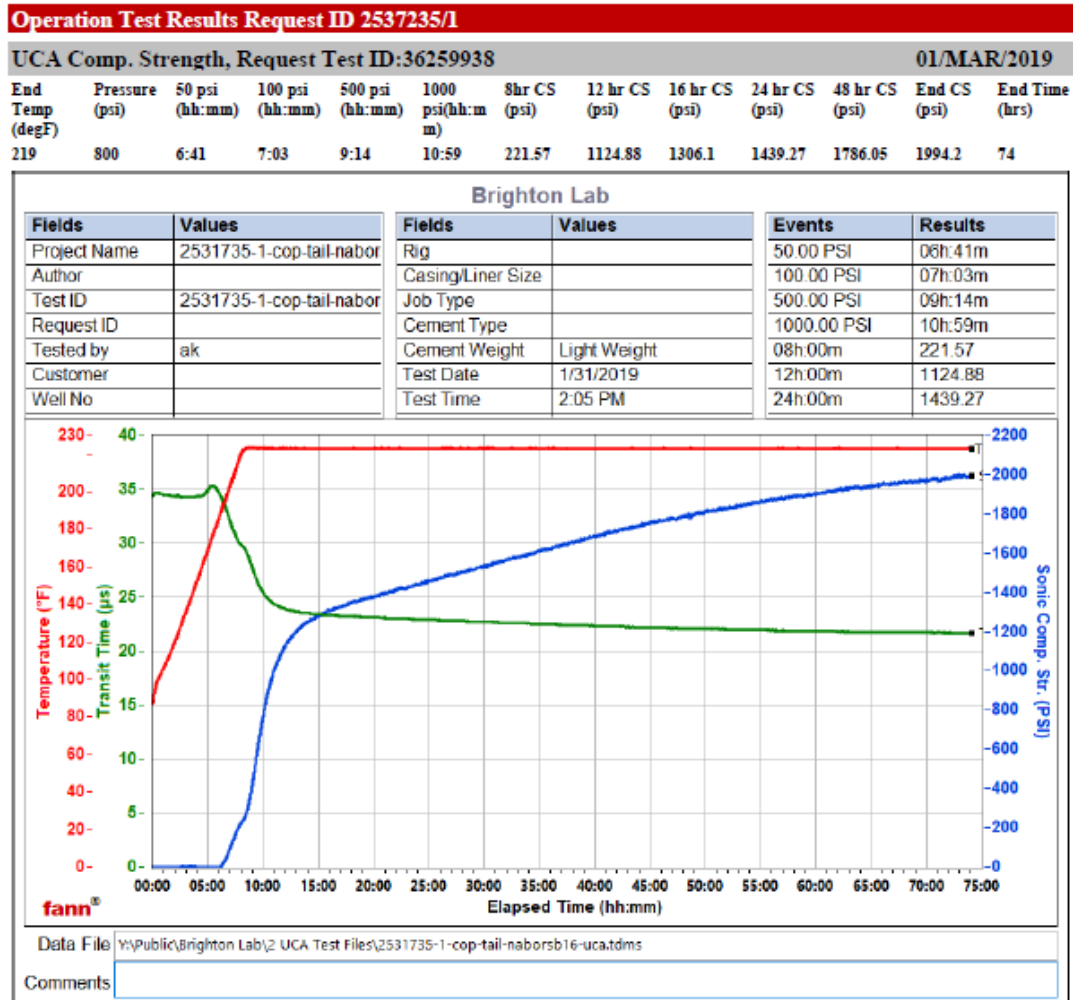
Thickening Time - ON-OFF-ON, Request Test ID:36268273

26/FEB/2019

Test Temp (degF)	Pressure (psi)	Reached in (min)	30 Bc (hh:mm)	50 Bc (hh:mm)	70 Bc (hh:mm)	100 Bc (hh:mm)	Start Bc	Stirring before stop (mins)	Static Period (min)	Peak reading (BC)
219	4764	87	6:54	6:56	7:09	7:09	12	90	10	10



This report is the property of Halliburton Energy Services and neither it nor any part thereof, nor a copy thereof, is to be published or disclosed without first securing the expressed written approval of Halliburton. It may however be used in the course of regular business operations by any person or concern receiving such report from Halliburton. This report is for information purposes only and the content is limited to the sample described. Halliburton makes no warranties, expressed or implied, as to the accuracy of the contents or results. Any user of this report agrees Halliburton shall not be liable for any loss or damage regardless of cause, including any act or omission of Halliburton, resulting from the use hereof.



This report is the property of Halliburton Energy Services and neither it nor any part thereof, nor a copy thereof, is to be published or disclosed without first securing the expressed written approval of Halliburton. It may however be used in the course of regular business operations by any person or concern receiving such report from Halliburton. This report is for information purposes only and the content is limited to the sample described. Halliburton makes no warranties, expressed or implied, as to the accuracy of the contents or results. Any user of this report agrees Halliburton shall not be liable for any loss or damage regardless of cause, including any act or omission of Halliburton, resulting from the use hereof.

HALLIBURTON

Lab Results- Tail

Rockies, Brighton

Job Information

Request/Slurry	2537236/2	Rig Name	Nabors B16	Date	22/FEB/2019
Submitted By	Tyler Hill	Job Type	Production Casing	Bulk Plant	Brighton
Customer	ConocoPhillips	Location	Weld	Well	Prosper Farms 4-65 11-12 3AH

Well Information

Casing/Liner Size	5.5 in	Depth MD	17841 ft	BHST	104°C / 219°F
Hole Size	8.5 in	Depth TVD	7806 ft	BHCT	104°C / 219°F
Pressure	4764 psi				

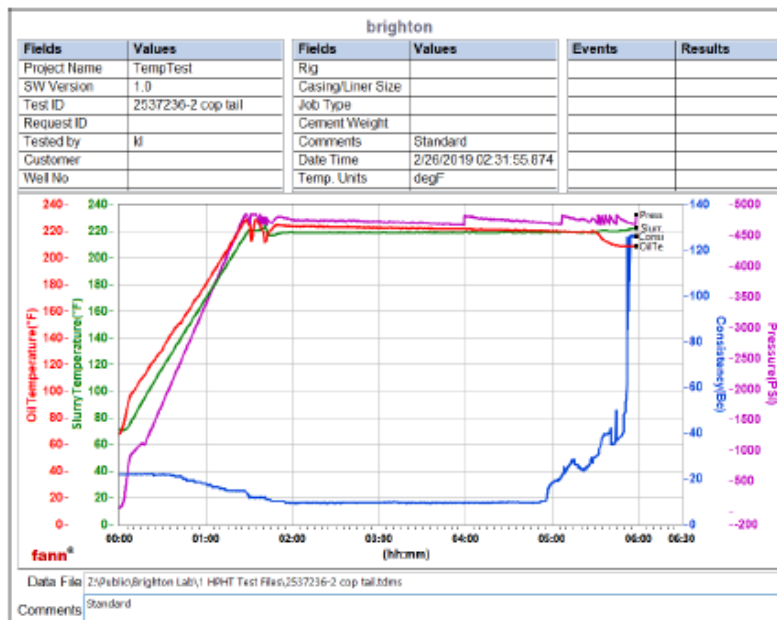
Cement Information - Tail Design

Conc	UOM	Cement/Additive	MP	Sample Type	Sample Date	Lot No.	Cement Properties		
100	% BWOC	Cement Blend					Slurry Density	13.5	lbm/gal
8.73	gal/sack	Field (Fresh) Water		Lab	09.10.18	8/19/2018	Slurry Yield	1.79	ft ³ /sack
25	% BWOC	SS-200 silica flour	PB	Bulk Blend	26.02.19		Water Requirement	8.73	gal/sack
0.1	% BWOC	SA-1015 (PB)	PB	Bulk Blend	26.02.19	8f3692w			
0.3	% BWOC	HR-5 (PB)	PB	Bulk Blend	26.02.19	1180200			
0.8	% BWOC	HALAD-344 (PB)	PB	Bulk Blend	26.02.19	20181142			
0.2	% BWOC	HALAD-413 (PB)	PB	Bulk Blend	26.02.19	zmbj0686a0			

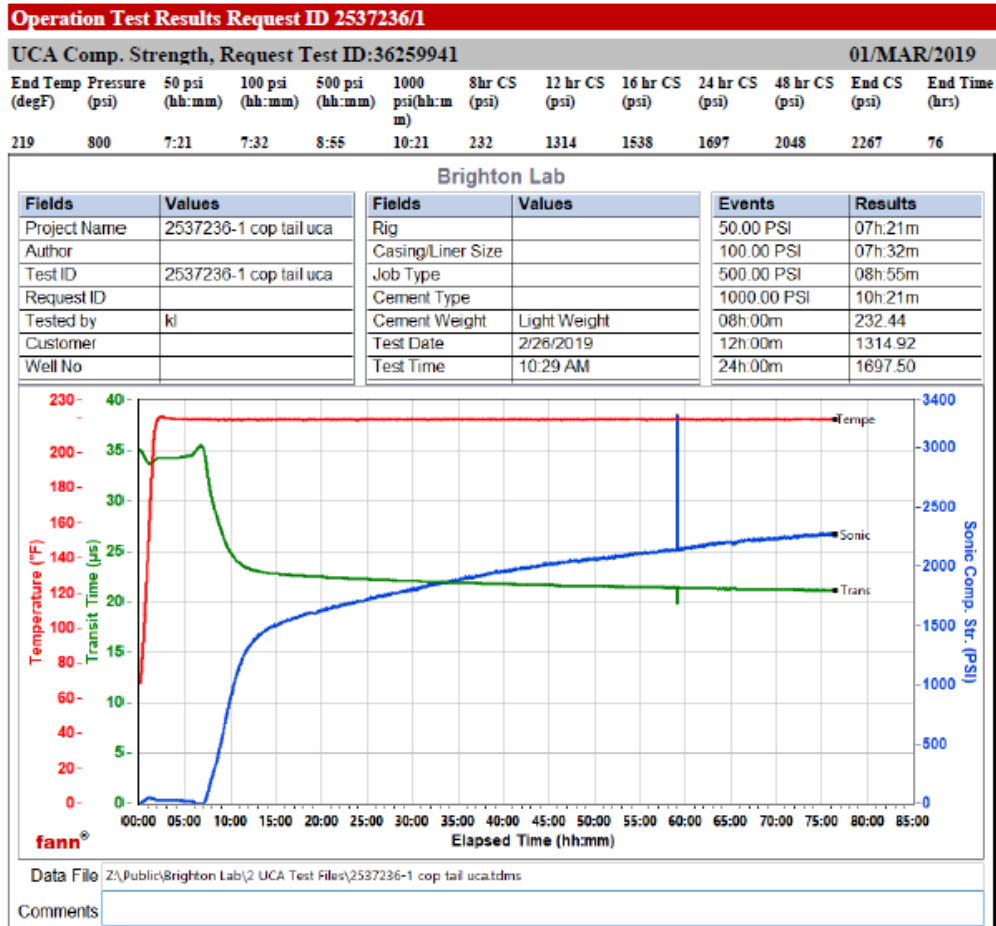
Operation Test Results Request ID 2537236/2

Thickening Time - ON-OFF-ON, Request Test ID:36269466 26/FEB/2019

Test Temp (degF)	Pressure (psi)	Reached in (min)	30 Bc (hh:mm)	50 Bc (hh:mm)	70 Bc (hh:mm)	100 Bc (hh:mm)	Start Bc	Stirring before stop (mins)	Static Period (min)	Peak reading (BC)
219	4764	87	5:31	5:52	5:52	5:52	23	90	10	11



This report is the property of Halliburton Energy Services and neither it nor any part thereof, nor a copy thereof, is to be published or disclosed without first securing the expressed written approval of Halliburton. It may however be used in the course of regular business operations by any person or concern receiving such report from Halliburton. This report is for information purposes only and the content is limited to the sample described. Halliburton makes no warranties, expressed or implied, as to the accuracy of the contents or results. Any user of this report agrees Halliburton shall not be liable for any loss or damage regardless of cause, including any act or omission of Halliburton, resulting from the use hereof.



This report is the property of Halliburton Energy Services and neither it nor any part thereof, nor a copy thereof, is to be published or disclosed without first securing the expressed written approval of Halliburton. It may however be used in the course of regular business operations by any person or concern receiving such report from Halliburton. This report is for information purposes only and the content is limited to the sample described. Halliburton makes no warranties, expressed or implied, as to the accuracy of the contents or results. Any user of this report agrees Halliburton shall not be liable for any loss or damage regardless of cause, including any act or omission of Halliburton, resulting from the use hereof.

2.0 Real-Time Job Summary

2.1 Job Event Log

Type	Seq. No.	Activity	Graph Label	Date	Time	Source	DH Density (ppg)	Comb Pump Rate (bbl/min)	PS Pump Press (psi)	Comments
Event	1	Call Out	Call Out	2/28/2019	04:30:00	USER				For Location @ 10:30
Event	2	Depart from Service Center or Other Site	Depart from Service Center or Other Site	2/28/2019	08:50:00	USER				
Event	3	Arrive at Location from Service Center	Arrive at Location from Service Center	2/28/2019	09:15:00	USER				38 Miles. Discussed numbers and job procedures with Customer
Event	4	Safety Meeting - Pre Rig-Up	Safety Meeting - Pre Rig-Up	2/28/2019	09:55:00	USER				JSA to discuss the hazards of rig-up
Event	5	Rig-Up Equipment	Rig-Up Equipment	2/28/2019	10:05:00	USER				Rig-up all surface lines and equipmnet up to the Buffer zone
Event	6	Casing on Bottom	Casing on Bottom	2/28/2019	13:40:00	USER				Landing joint brought to floor and landed
Event	7	Circulate Well	Circulate Well	2/28/2019	14:00:00	USER				rig is circulating
Event	8	Pre-Job Safety Meeting	Pre-Job Safety Meeting	2/28/2019	16:54:00	USER				With all essential personnel, to discuss the hazards of pumping the job, and pump schedule.
Event	9	Start Job	Start Job	2/28/2019	17:20:00	USER				
Event	10	Test Lines	Test Lines	2/28/2019	17:32:00	USER				LOAD LINE AND PRESSURE TEST 6403 PSI
Event	11	Pump Spacer	Pump Spacer	2/28/2019	17:43:00	USER				BATCH/ WEIGHT/ PUMP 60 BBLS OF TUNED SPACER @ 10.5 PPG
Event	13	Drop Bottom Plug	Drop Bottom Plug	2/28/2019	17:58:00	USER				DROP BOTTOM PLUG 57 BBLS INTO SPACER.

Event	12	Disconnect	Disconnect	2/28/2019	17:58:00	USER				LOST COMMUNICATION WITH THE PUMP TRUCK. WAS ABLE TO CONNECT. DID NOT RECORDED PRESSURE TEST AND SPACER.
Event	14	Check Weight	Check Weight	2/28/2019	17:59:11	COM4	10.78	0.00	-13.00	
Event	15	Pump Lead Cement	Pump Lead Cement	2/28/2019	18:02:00	USER	10.70	0.00	-14.00	Batch/ weight/ pump 835 sks(233.5 bbls) Elasticem @ 13.2 ppg, verified with pressurized scales
Event	16	Pump Tail Cement	Pump Tail Cement	2/28/2019	18:41:00	USER	13.31	6.00	308.00	Weight/ pump 1490 sks(475 bbls) Econocem @ 13.5 ppg, verified with pressurized scales.
Event	17	Check Weight	Check Weight	2/28/2019	18:44:14	COM4	13.72	5.90	386.00	
Event	18	Check Weight	Check Weight	2/28/2019	19:29:48	COM4	13.53	7.80	431.00	
Event	19	Shutdown	Shutdown	2/28/2019	19:55:00	USER	13.22	1.70	51.00	Wash pumps and lines.
Event	20	Drop Top Plug	Drop Top Plug	2/28/2019	20:10:00	USER	8.17	5.80	268.00	Load top plug in plug container verified by customer rep.
Event	21	Pump Displacement - Start	Pump Displacement - Start	2/28/2019	20:12:00	USER	8.18	0.00	-14.00	395.5 bbls fresh water. First 40 bbls with MMCR. Remaining with aldicide.
Event	22	Slow Rate	Slow Rate	2/28/2019	21:03:00	USER	8.16	6.40	3004.00	SLOW RATE TO 4.0 BPM @ 375 BBLs AWAY.
Event	23	Bump Plug	Bump Plug	2/28/2019	21:05:00	USER	8.17	4.00	3179.00	BUMP PLUG WITH 1000 psi over final circulating pressure of 2610 psi.
Event	24	Check Floats	Check Floats	2/28/2019	21:13:00	USER	8.25	0.00	180.00	Floats held. 5 bbls back
Event	25	End Job	End Job	2/28/2019	21:14:51	COM4	8.22	0.00	2.00	
Event	26	Pre-Rig Down Safety Meeting	Pre-Rig Down Safety Meeting	2/28/2019	21:25:00	USER	8.19	0.00	-5.00	JSA to discuss the hazards of rig-down

3.0 Attachments

3.1 Prosper Farms 4-65 11-12 3AH Production.png

