

HALLIBURTON

iCem[®] Service

CONOCO/PHILLIPS COMPANY-EBUS

United States of America, COLORADO

For: Jason Beach

Date: Monday, February 18, 2019

Prosper Farms 4-65 11-12 3DH

ARAPAHOE

Job Date: Monday, February 18, 2019

Sincerely,

Luke Kosakewich and Crew

Legal Notice

Disclaimer:

All information in this report is provided subject to the terms and conditions which govern the services provided by Halliburton. Halliburton personnel use their best efforts in gathering information and their best judgment in interpreting it, but any interpretation, research, analysis or recommendation furnished by Halliburton are opinions based upon inferences from measurements and empirical relationships and assumptions, which inferences and empirical relationships and assumptions are not infallible, and with respect to which professionals in the industry may differ. iCem 3D Displacement results are used to understand how fluids intermix during a cement job. Simulation and 3D displacement results are not intended as and should not be used as a replacement for bond logs in determining top of cement. Current 3D model calculations are known to model more volume than the input volume for standard cases due to known calculation improvements required. For rotational cases, the modeled volume will be impacted by the same calculations impacting the standard cases, as well as additional constraints imposed to make the calculation time required operationally feasible. Therefore, until further notice, 3D displacement results should not be used for replacement of a bond log, or used as an identifier of top of cement. HALLIBURTON IS UNABLE TO GUARANTEE THE ACCURACY OF ANY CHART INTERPRETATION, RESEARCH ANALYSIS, OR JOB RECOMMENDATION and any interpretation or recommendation is not for use of or reliance upon by any third party. The customer has full responsibility for any of its decisions which are based on the information provided in this report.

The Road to Excellence Starts with Safety

Sold To #: 352431	Ship To #: 3899035	Quote #: 0022543522	Sales Order #: 0905494903
Customer: CONOCO/PHILLIPS COMPANY-EBUS		Customer Rep: Jason Beach	
Well Name: PROSPER FARMS 4-65 11-12	Well #: 3DH	API/UWI #: 05-005-07381-00	
Field: WILDCAT	City (SAP): WATKINS	County/Parish: ARAPAHOE	State: COLORADO
Legal Description: NW SW-11-4S-65W-2236FSL-490FWL			
Contractor:		Rig/Platform Name/Num: Nabors B16	
Job BOM: 7521 7521			
Well Type: HORIZONTAL OIL			
Sales Person: HALAMERICA\HB41307		Srv Supervisor: Luke Kosakewich	

Job

Formation Name			
Formation Depth (MD)	Top		Bottom
Form Type			BHST
Job depth MD	2166ft		Job Depth TVD
Water Depth			Wk Ht Above Floor
Perforation Depth (MD)	From		To

Well Data

Description	New / Used	Size in	ID in	Weight lbm/ft	Thread	Grade	Top MD ft	Bottom MD ft	Top TVD ft	Bottom TVD ft
Casing		16	15.25				0	100	0	100
Casing		9.625	8.921	36	STC	J-55	0	2156	0	2156
Open Hole Section			13.5				100	2166	100	2166

Tools and Accessories

Type	Size in	Qty	Make	Depth ft	Type	Size in	Qty	Make
Guide Shoe					Top Plug	9.625	1	HES
Float Shoe	9.625		1	2156	Bottom Plug	9.625	1	HES
Float Collar	9.625		1	2110	SSR plug set			
Insert Float					Plug Container	9.625	1	HES
Stage Tool					Centralizers			

Fluid Data

Stage/Plug #: 1

Fluid #	Stage Type	Fluid Name	Qty	Qty UoM	Mixing Density lbm/gal	Yield ft3/sack	Mix Fluid Gal	Rate bbl/min	Total Mix Fluid Gal
1	10 lb/gal Tuned Spacer III	Tuned Spacer III	50	bbl	10	8.97		5	

Fluid #	Stage Type	Fluid Name	Qty	Qty UoM	Mixing Density lbm/gal	Yield ft3/sack	Mix Fluid Gal	Rate bbl/min	Total Mix Fluid Gal
2	SwiftCem	SWIFTCM (TM) SYSTEM	492	sack	12	2.57		8	15.14

Fluid #	Stage Type	Fluid Name	Qty	Qty UoM	Mixing Density lbm/gal	Yield ft3/sack	Mix Fluid Gal	Rate bbl/min	Total Mix Fluid Gal
3	SwiftCem	SWIFTCEN (TM) SYSTEM	255	sack	14.2	1.59		8	7.9
Fluid #	Stage Type	Fluid Name	Qty	Qty UoM	Mixing Density lbm/gal	Yield ft3/sack	Mix Fluid Gal	Rate bbl/min	Total Mix Fluid Gal
4	Displacement	Displacement	163	bbl	8.33			8	
Cement Left In Pipe		Amount	45 ft		Reason			Shoe Joint	
Mix Water:		pH 7	Mix Water Chloride:		230 < ppm		Mix Water Temperature:		56 °F
Plug Bumped?		Yes	Bump Pressure:		950 psi		Floats Held?		Yes
Comment There were full returns throughout the job. Bumped the plug 500 psi. over 550 psi. at 4 bpm. Final pressure was 1,000 psi. Bled off pressure to check floats. Floats held. Got 1 bbls. of fluid back to the truck. Pressured up to 1,800 psi. for a 30 minute casing test. Bled off pressure to check floats and floats held. Got 1.5 bbls. of fluid back to the truck. Circulated 50 bbls. of spacer and 120 bbls. cement to surface. Estimated TOT is 1,199'.									

1.0 Real-Time Job Summary

1.1 Job Event Log

Type	Seq. No.	Activity	Graph Label	Date	Time	Source	DS Pump Press (psi)	Comb Pump Rate (bbl/min)	Pump Stg Tot (bbl)	Recirc Density (ppg)	PS Pump Press (psi)	Comments
Event	1	Call Out	Call Out	2/17/2019	22:30:00	USER						Crew was called out at 12:30 for an on location time of 18:30.
Event	2	Depart Yard Safety Meeting	Depart Yard Safety Meeting	2/18/2019	03:55:00	USER						Crew held a pre journey safety meeting and JSA.
Event	3	Depart Shop for Location	Depart Shop for Location	2/18/2019	04:05:00	USER						Started journey management with dispatch and left location.
Event	4	Arrive at Location from Service Center	Arrive at Location from Service Center	2/18/2019	06:15:00	USER						Crew performed a site assessment, safety meeting and hazard hunt on location. Checked in with the customer and discussed the job procedures, rig up and well bore schematics. The rig was running having problems landing there casing.
Event	5	Other	Other	2/18/2019	06:17:00	USER						Well bore: MD: 2,166', TP: 9.625" 36 # set at 2, 156', FC: 2,110', OH: 13.5", Mud # 9.2 ppg. Water test: PH: 7, Chlorides: 0, Temp: 56 Degrees.
Event	6	Pre-Rig Up Safety Meeting	Pre-Rig Up Safety Meeting	2/18/2019	06:20:00	USER						Held a pre rig up safety meeting with my crew.
Event	7	Rig-Up Equipment	Rig-Up Equipment	2/18/2019	06:25:00	USER						The crew rigged up all lines, hoses and equipment for the job.

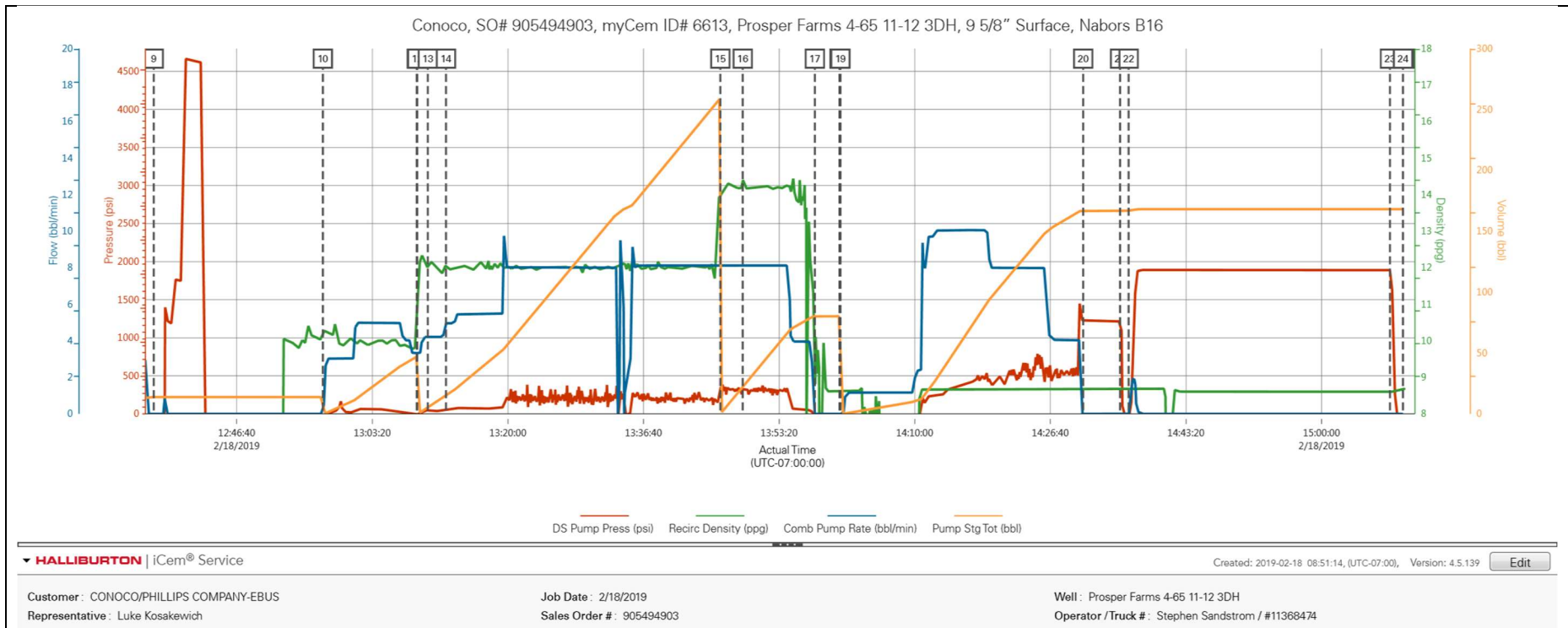
Event	8	Safety Meeting	Safety Meeting	2/18/2019	12:00:00	USER							Halliburton cement crew held a pre cement job safety meeting and JSA with third party personnel and rig crew.
Event	11	Start Job	Start Job	2/18/2019	12:35:05	COM5	-31.00	0.00	11.90	-6.48	29.00		Pumped 2 bbls. of fresh water at 3 bpm. to fill lines.
Event	12	Test Lines	Test Lines	2/18/2019	12:36:28	RTD Import	-42.00	0.00	11.90	-6.48	-34.00		Pressure tested lines to 4,500 psi. with a 500 psi. electronic kick out test.
Event	34	Pump Spacer 1	Pump Spacer 1*	2/18/2019	12:57:15	RTD Import	-29.00	0.00	13.80	9.93	10.00		Pumped 50 bbls. (31 sks.) of Tuned Spacer III Mixed at 10 ppg., Yield: 8.97 ft3/sk, 61.4 gal/sk
Event	39	Drop Bottom Plug	Drop Bottom Plug	2/18/2019	13:08:47	RTD Import	41.00	5.00	38.30	9.78	-2.00		Dropped the bottom which was witnessed by the customer.
Event	40	Pump Lead Cement	Pump Lead Cement*	2/18/2019	13:08:51	RTD Import	41.00	5.00	38.60	9.81	-3.00		Pumped 224 bbls. (490 sks.) of Swiftcem mixed at 12 ppg., Yield: 2.57 ft3/sk, 15.14 gal/sks. Density was verified by pressurized scales.
Event	43	Check Weight	Check Weight	2/18/2019	13:12:23	COM5	45.00	4.20	5.10	11.98	22.00		Cement weight up at 12 ppg. Density was verified by pressurized scales.
Event	55	Pump Tail Cement	Pump Tail Cement*	2/18/2019	13:46:06	RTD Import	193.00	8.10	241.30	12.08	144.00		Pumped 72 bbls. (255 sks.) of Swiftcem mixed at 14.2 ppg., Yield: 1.59 ft3/sk, 7.9 gal/sks. Density was verified by pressurized scales.
Event	58	Check Weight	Check Weight	2/18/2019	13:48:51	COM5	337.00	8.10	4.40	14.18	263.00		Cement weighed up at 14.2 ppg. Density was verified by pressurized scales.
Event	67	Shutdown	Shutdown	2/18/2019	13:57:43	RTD Import							Pumped all cement away.

Event	78	Drop Top Plug	Drop Top Plug	2/18/2019	14:00:45	RTD Import							Halliburton dropped the top plug, which was witnessed by the customer.
Event	79	Pump Displacement	Pump Displacement*	2/18/2019	14:00:52	RTD Import							Halliburton pumped 163 bbls. of fresh water for displacement. Wash pumps and lines for the first 10 bbls.
Event	81	Bump Plug	Bump Plug	2/18/2019	14:30:42	RTD Import	525.00	4.00	159.60	8.68	495.00		Bumped the plug 500 psi. over 5,50 psi. at 4 bpm. Final pressure was 1,000 psi. Held for 5 minutes.
Event	82	Check Floats	Check Floats	2/18/2019	14:35:14	USER	1213.00	0.00	166.80	8.68	1227.00		We bled off pressure to check floats. Floats Held. Got 1 bbl. of fluid back to the truck.
Event	83	Pressure Up Well	Pressure Up Well	2/18/2019	14:36:17	RTD Import	1214.00	0.00	166.80	8.69	1232.00		Pressured up to 1,800 psi. for a 30 minute casing test.
Event	85	Check Floats	Check Floats	2/18/2019	15:08:24	USER	1893.00	0.00	168.10	8.61	1914.00		Bled off pressure to check floats. Floats held. Got 1.5 bbls. of fluid back to the truck. Circulate 50 bbls. of spacer and 120 bbls. of cement to surface. Estimated TOT is 1,199'.
Event	86	Pre-Rig Down Safety Meeting	Pre-Rig Down Safety Meeting	2/18/2019	15:10:00	USER	1890.00	0.00	168.10	8.61	1914.00		Halliburton cement crew held a pre rig down safety meeting and JSA.
Event	87	End Job	End Job	2/18/2019	15:11:00	COM5	1454.00	0.00	168.10	8.61	1233.00		Washed and blew down all pumps and lines until clean and dry.
Event	88	Rig-Down Equipment	Rig-Down Equipment	2/18/2019	15:20:00	USER	-34.00	0.00	168.10	8.68	-3.00		Rigged down all lines, hoses and equipment.
Event	89	Safety Meeting - Departing Location	Safety Meeting - Departing Location	2/18/2019	18:20:00	USER							Held a pre journey safety meeting with crew.

Event	90	Depart Location for Service Center or Other Site	Depart Location for Service Center or Other Site	2/18/2019	18:30:00	USER	Started journey management with dispatch and left location.
-------	----	--	--	-----------	----------	------	---

2.0 Attachments

2.1 Prosper Farms 4-65 11-12 3DH-Custom Results.png



Job Information

Request/Slurry	2535511/1	Rig Name	Nabors B16	Date	14/FEB/2019
Submitted By	Corey Nicholls	Job Type	Surface Casing	Bulk Plant	Brighton
Customer	ConocoPhillips	Location		Well	Prosper Farms 4-65 11-12 3DH

Well Information

Casing/Liner Size	9.625 in	Depth MD	2147 ft	BHST	35°C / 95°F
Hole Size	13.5 in	Depth TVD	2147 ft	BHCT	34°C / 93°F
Pressure	1214 psi				

Cement Information - Lead Design

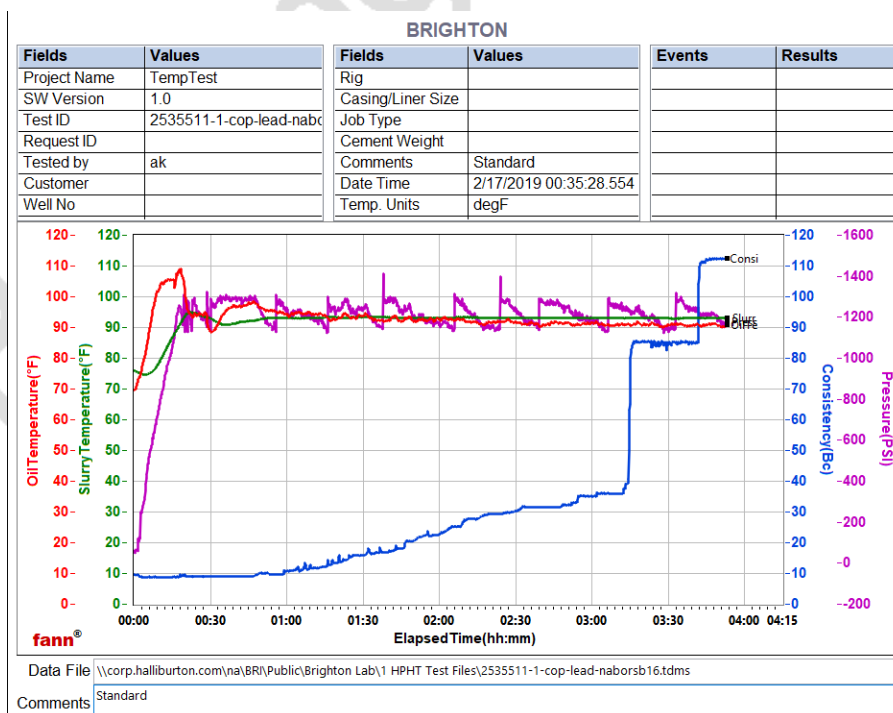
Conc	UOM	Cement/Additive	MP	Sample Type	Sample Date	Lot No.	Cement Properties		
100	% BWOC	Cemex Type I-II		Bulk Blend	17.02.19	9791x2, 3846	Slurry Density	12	lbm/gal
15.14	gal/sack	Field (Fresh) Water		Lab	09.10.18	8/19/2018	Slurry Yield	2.57	ft3/sack
2	% BWOC	Cal-Seal 60	PB	Bulk Blend	17.02.19	12/12/2018	Water Requirement	15.14	gal/sack
2.3	% BWOC	Econolite (Powder - PB)	PB	Bulk Blend	17.02.19	U1110118	Total Mix Fluid	15.14	gal/sack
0.2	% BWOC	VERSASET (PB)	PB	Bulk Blend	17.02.19	2018-9-1			
6	lb/sk	Mountain Enhancer 923	PB	Bulk Blend	17.02.19				

Operation Test Results Request ID 2535511/1

Thickening Time, Request Test ID:36236642

17/FEB/2019

Temp (degF)	Pressure (psi)	Reached in (min)	Start BC	30 Bc (hh:mm)	40 Bc (hh:mm)	50 Bc (hh:mm)	70 Bc (hh:mm)	100 Bc (hh:mm)
93	1214	18	9.7	2:28	3:14	3:14	3:15	3:41



These are draft results and have not been approved for final use.

This report is the property of Halliburton Energy Services and neither it nor any part thereof, nor a copy thereof, is to be published or disclosed without first securing the expressed written approval of Halliburton. It may however be used in the course of regular business operations by any person or concern receiving such report from Halliburton. This report is for information purposes only and the content is limited to the sample described. Halliburton makes no warranties, expressed or implied, as to the accuracy of the contents or results. Any user of this report agrees Halliburton shall not be liable for any loss or damage regardless of cause, including any act or omission of Halliburton, resulting from the use hereof.

Job Information

Request/Slurry	2535512/1	Rig Name	Nabors B16	Date	14/FEB/2019
Submitted By	Corey Nicholls	Job Type	Surface Casing	Bulk Plant	Brighton
Customer	ConocoPhillips	Location		Well	Prosper Farms 4-65 11-12 3DH

Well Information

Casing/Liner Size	9.625 in	Depth MD	2147 ft	BHST	35°C / 95°F
Hole Size	13.5 in	Depth TVD	2147 ft	BHCT	34°C / 93°F
Pressure	1214 psi				

Cement Information - Tail Design

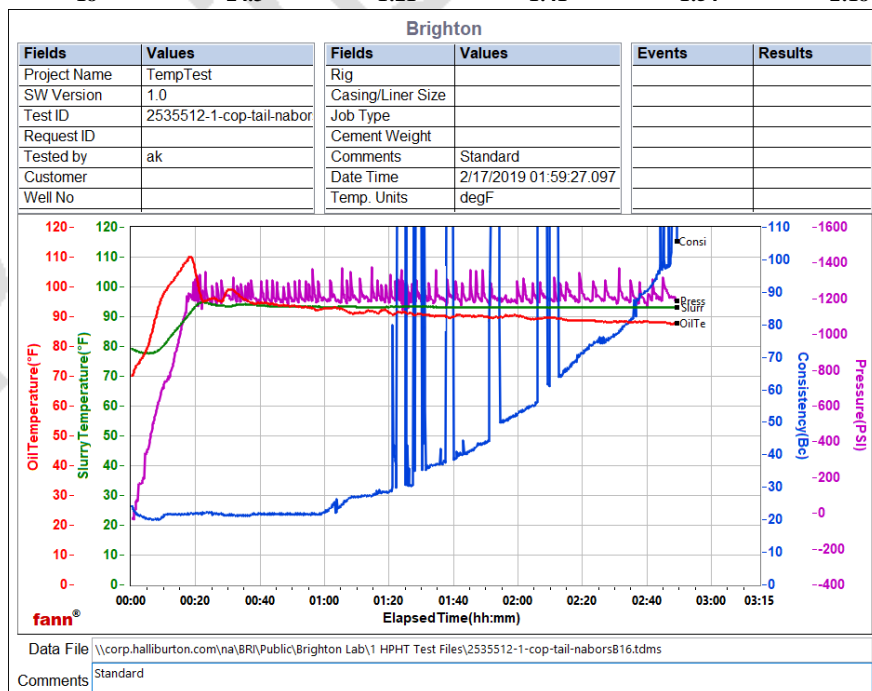
Conc	UOM	Cement/Additive	MP	Sample Type	Sample Date	Lot No.	Cement Properties		
100	% BWOC	Mountain G		Bulk Blend	17.02.19	9791x2, 3846	Slurry Density	14.2	lbm/gal
7.9	gal/sack	Field (Fresh) Water		Lab	09.10.18	8/19/2018	Slurry Yield	1.59	ft3/sack
2	% BWOC	Cal-Seal 60	PB	Bulk Blend	17.02.19	12/12/2018	Water Requirement	7.9	gal/sack
1.3	% BWOC	Econolite (Powder - PB)	PB	Bulk Blend	17.02.19	U110118	Total Mix Fluid	7.9	gal/sack
0.2	% BWOC	VERSASET (PB)	PB	Bulk Blend	17.02.19	2018-9-1			
6	lb/sk	Mountain Enhancer 923	PB	Bulk Blend	17.02.19				

Operation Test Results Request ID 2535512/1

Thickening Time, Request Test ID:36236645

17/FEB/2019

Temp (degF)	Pressure (psi)	Reached in (min)	Start BC	30 Bc (hh:mm)	40 Bc (hh:mm)	50 Bc (hh:mm)	70 Bc (hh:mm)	100 Bc (hh:mm)
93	1214	18	24.3	1:21	1:41	1:54	2:18	2:47



These are draft results and have not been approved for final use.

This report is the property of Halliburton Energy Services and neither it nor any part thereof, nor a copy thereof, is to be published or disclosed without first securing the expressed written approval of Halliburton. It may however be used in the course of regular business operations by any person or concern receiving such report from Halliburton. This report is for information purposes only and the content is limited to the sample described. Halliburton makes no warranties, expressed or implied, as to the accuracy of the contents or results. Any user of this report agrees Halliburton shall not be liable for any loss or damage regardless of cause, including any act or omission of Halliburton, resulting from the use hereof.

HALLIBURTON

iCem[®] Service

CONOCO/PHILLIPS COMPANY-EBUS

Date: Sunday, April 14, 2019

Prosper Farms 4-65 11-12 3DH Production

Job Date: Thursday, March 21, 2019

Sincerely,

Bryce Hinsch

Legal Notice

Disclaimer:

All information in this report is provided subject to the terms and conditions which govern the services provided by Halliburton. Halliburton personnel use their best efforts in gathering information and their best judgment in interpreting it, but any interpretation, research, analysis or recommendation furnished by Halliburton are opinions based upon inferences from measurements and empirical relationships and assumptions, which inferences and empirical relationships and assumptions are not infallible, and with respect to which professionals in the industry may differ. iCem 3D Displacement results are used to understand how fluids intermix during a cement job. Simulation and 3D displacement results are not intended as and should not be used as a replacement for bond logs in determining top of cement. Current 3D model calculations are known to model more volume than the input volume for standard cases due to known calculation improvements required. For rotational cases, the modeled volume will be impacted by the same calculations impacting the standard cases, as well as additional constraints imposed to make the calculation time required operationally feasible. Therefore, until further notice, 3D displacement results should not be used for replacement of a bond log, or used as an identifier of top of cement. HALLIBURTON IS UNABLE TO GUARANTEE THE ACCURACY OF ANY CHART INTERPRETATION, RESEARCH ANALYSIS, OR JOB RECOMMENDATION and any interpretation or recommendation is not for use of or reliance upon by any third party. The customer has full responsibility for any of its decisions which are based on the information provided in this report.

Table of Contents

1.0 Cementing Job Summary 4

 1.1 Executive Summary4

2.0 Real-Time Job Summary 12

 2.1 Job Event Log12

3.0 Attachments..... 16

 3.1 ConocoPhillips Prosper Farms 4-65 11-12 3DH Production Chart.....16

1.0 Cementing Job Summary

1.1 Executive Summary

Halliburton appreciates the opportunity to perform the cementing services on the **Prosper Farms 4-65 11-12 3DH** cement **production** casing job. A pre-job safety meeting was held before the job where details of the job were discussed, potential safety hazards were reviewed, and environmental compliance procedures were outlined.

Approximately 27 bbls of spacer were returned to surface.

Halliburton maintains a continuous quality improvement process and appreciates any comments or suggestions that you may have. Halliburton again thanks you for the opportunity to perform service work on this well. We hope to be your solutions provider for future projects.

Respectfully,

Halliburton Fort Lupton

The Road to Excellence Starts with Safety

Sold To #: 352431		Ship To #: 3899035		Quote #: 0022543520		Sales Order #: 0905554806				
Customer: CONOCO/PHILLIPS COMPANY-EBUS				Customer Rep: Jason Beach						
Well Name: PROSPER FARMS 4-65 11-12			Well #: 3DH		API/UWI #: 05-005-07381-00					
Field: WILDCAT		City (SAP): WATKINS		County/Parish: ARAPAHOE		State: COLORADO				
Legal Description: NW SW-11-4S-65W-2236FSL-490FWL										
Contractor:				Rig/Platform Name/Num: Nabors B16						
Job BOM: 7523 7523										
Well Type: HORIZONTAL OIL										
Sales Person: HALAMERICA\HB41307				Srvc Supervisor: Kamereon White						
Job										
Formation Name										
Formation Depth (MD)		Top				Bottom				
Form Type						BHST				
Job depth MD		17995ft				Job Depth TVD				
Water Depth				Wk Ht Above Floor		5				
Perforation Depth (MD)		From				To				
Well Data										
Description	New / Used	Size in	ID in	Weight lbm/ft	Thread	Grade	Top MD ft	Bottom MD ft	Top TVD ft	Bottom TVD ft
Casing		9.625	8.921	36	STC	J-55	0	2156		0
Casing		5.5	4.778	20	TXP-BTC	P-110	0	17995		0
Open Hole Section			8.5				2156	18010		0
Tools and Accessories										
Type	Size in	Qty	Make	Depth ft		Type	Size in	Qty	Make	
						Top Plug	5.5	1		
Float Shoe	5.5	1		17995		Bottom Plug	5.5	1		
Float Collar	5.5	1		17913						
						Plug Container	5.5	1	HES	
						Centralizers	5.5	466		
Fluid Data										
Stage/Plug #: 1										
Fluid #	Stage Type	Fluid Name	Qty	Qty UoM	Mixing Density lbm/gal	Yield ft3/sack	Mix Fluid Gal	Rate bbl/min	Total Mix Fluid Gal	
1	10.5 lb/gal Tuned Spacer III	Tuned Spacer III	60	bbl	10.5	6.62	42.5	6		

Fluid #	Stage Type	Fluid Name	Qty	Qty UoM	Mixing Density lbm/gal	Yield ft3/sack	Mix Fluid Gal	Rate bbl/min	Total Mix Fluid Gal
2	ElastiCem	ELASTICEM (TM) SYSTEM	840	sack	13.2	1.57		8	7.54
Fluid #	Stage Type	Fluid Name	Qty	Qty UoM	Mixing Density lbm/gal	Yield ft3/sack	Mix Fluid Gal	Rate bbl/min	Total Mix Fluid Gal
3	EconoCem	ECONOCEM (TM) SYSTEM	1510	sack	13.5	1.79		8	8.74
Fluid #	Stage Type	Fluid Name	Qty	Qty UoM	Mixing Density lbm/gal	Yield ft3/sack	Mix Fluid Gal	Rate bbl/min	Total Mix Fluid Gal
4	MMCR Displacement	MMCR Displacement	20	bbl	8.34				
0.50 gal/bbl		MICRO MATRIX CEMENT RETARDER, 5 GAL PAIL (100003781)							
Fluid #	Stage Type	Fluid Name	Qty	Qty UoM	Mixing Density lbm/gal	Yield ft3/sack	Mix Fluid Gal	Rate bbl/min	Total Mix Fluid Gal
5	Water	Water	377	bbl	8.33				

Cement Left In Pipe	Amount	82 ft		Reason	Shoe Joint	
Mix Water:	pH 7	Mix Water Chloride:	< 400 ppm	Mix Water Temperature:	53, 56°F	
		Plug Displaced by:	8.33 lb/gal			
Plug Bumped?	Yes	Bump Pressure:	2800 psi	Floats Held?	Yes	
Cement Returns:	27 spcr bbl	Returns Density:	10.5 lb/gal			
Comment						

HALLIBURTON

Rockies, Brighton

Lab Results- Lead

Job Information

Request/Slurry	2541459/2	Rig Name	Nabors B16	Date	12/MAR/2019
Submitted By	Bryce Hinsch	Job Type	Production Casing	Bulk Plant	Brighton
Customer	ConocoPhillips	Location	Weld	Well	Prosper Farms 4-65 11-12 3DH

Well Information

Casing/Liner Size	5.5 in	Depth MD	18012 ft	BHST	104°C / 219°F
Hole Size	8.5 in	Depth TVD	7777 ft	BHCT	104°C / 219°F
Pressure	4407 psi				

Cement Information - Lead Design

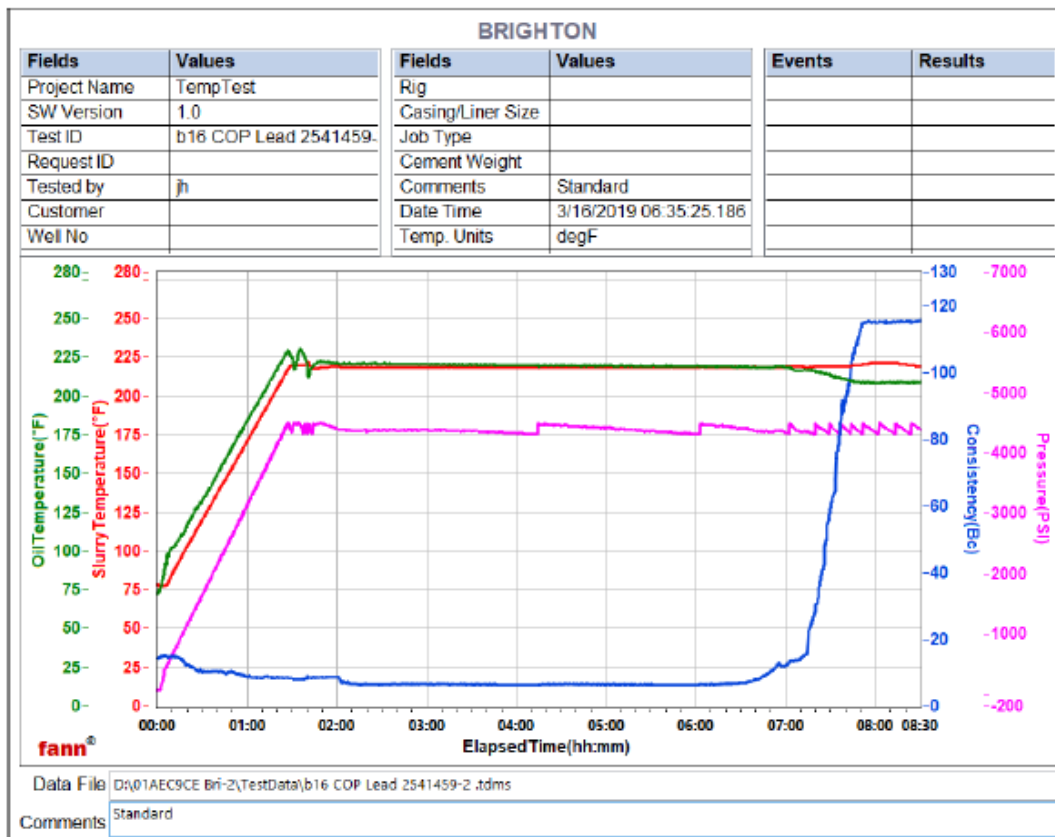
Conc	UOM	Cement/Additive	MP	Sample Type	Sample Date	Lot No.	Cement Properties		
100	% BWOC	Cement Blend					Slurry Density	13.2	lbm/gal
7.54	gal/sack	Field (Fresh) Water		Lab	01.03.19	3/1/19	Slurry Yield	1.57	ft3/sack
5	lb/sk	WellLife 708 (PB)	PB	Bulk Blend	16.03.19	300728	Water Requirement	7.54	gal/sack
0.1	% BWOC	SA-1015 (PB)	PB	Bulk Blend	16.03.19	8F3692W	Total Mix Fluid	7.54	gal/sack
0.3	% BWOC	SCR-100 (PB)	PB	Bulk Blend	16.03.19	CT18L29001			
1	lb/sk	Silicalite - Compacted	PB	Bulk Blend	16.03.19	BG260204-2	Water Source	Field (Fresh)	Water
0.2	% BWOC	HALAD-344 (PB)	PB	Bulk Blend	16.03.19	20181232	Water Chloride		

Operation Test Results Request ID 2541459/2

Thickening Time - ON-OFF-ON, Request Test ID:36322761										16/MAR/2019
Test Temp (degF)	Pressure (psi)	Reached in (min)	30 Bc (hh:mm)	50 Bc (hh:mm)	70 Bc (hh:mm)	100 Bc (hh:mm)	Start Bc	Stirring before stop (mins)	Static Period (min)	Peak reading (BC)
219	4407	87	7:20	7:27	7:33	7:43	14.2	90	10	8.3

These are draft results and have not been approved for final use.

This report is the property of Halliburton Energy Services and neither it nor any part thereof, nor a copy thereof, is to be published or disclosed without first securing the expressed written approval of Halliburton. It may however be used in the course of regular business operations by any person or concern receiving such report from Halliburton. This report is for information purposes only and the content is limited to the sample described. Halliburton makes no warranties, expressed or implied, as to the accuracy of the contents or results. Any user of this report agrees Halliburton shall not be liable for any loss or damage regardless of cause, including any act or omission of Halliburton, resulting from the use hereof.



These are draft results and have not been approved for final use.

This report is the property of Halliburton Energy Services and neither it nor any part thereof, nor a copy thereof, is to be published or disclosed without first securing the expressed written approval of Halliburton. It may however be used in the course of regular business operations by any person or concern receiving such report from Halliburton. This report is for information purposes only and the content is limited to the sample described. Halliburton makes no warranties, expressed or implied, as to the accuracy of the contents or results. Any user of this report agrees Halliburton shall not be liable for any loss or damage regardless of cause, including any act or omission of Halliburton, resulting from the use hereof.

HALLIBURTON

Rockies, Brighton

Lab Results- Tail

Job Information

Request/Slurry	2541460/3	Rig Name	Nabors B16	Date	12/MAR/2019
Submitted By	Bryce Hinsch	Job Type	Production Casing	Bulk Plant	Brighton
Customer	ConocoPhillips	Location	Weld	Well	Prosper Farms 4-65 11-12 3DH

Well Information

Casing/Liner Size	5.5 in	Depth MD	18012 ft	BHST	104°C / 219°F
Hole Size	8.5 in	Depth TVD	7777 ft	BHCT	104°C / 219°F
Pressure	4407 psi				

Cement Information - Tail Design

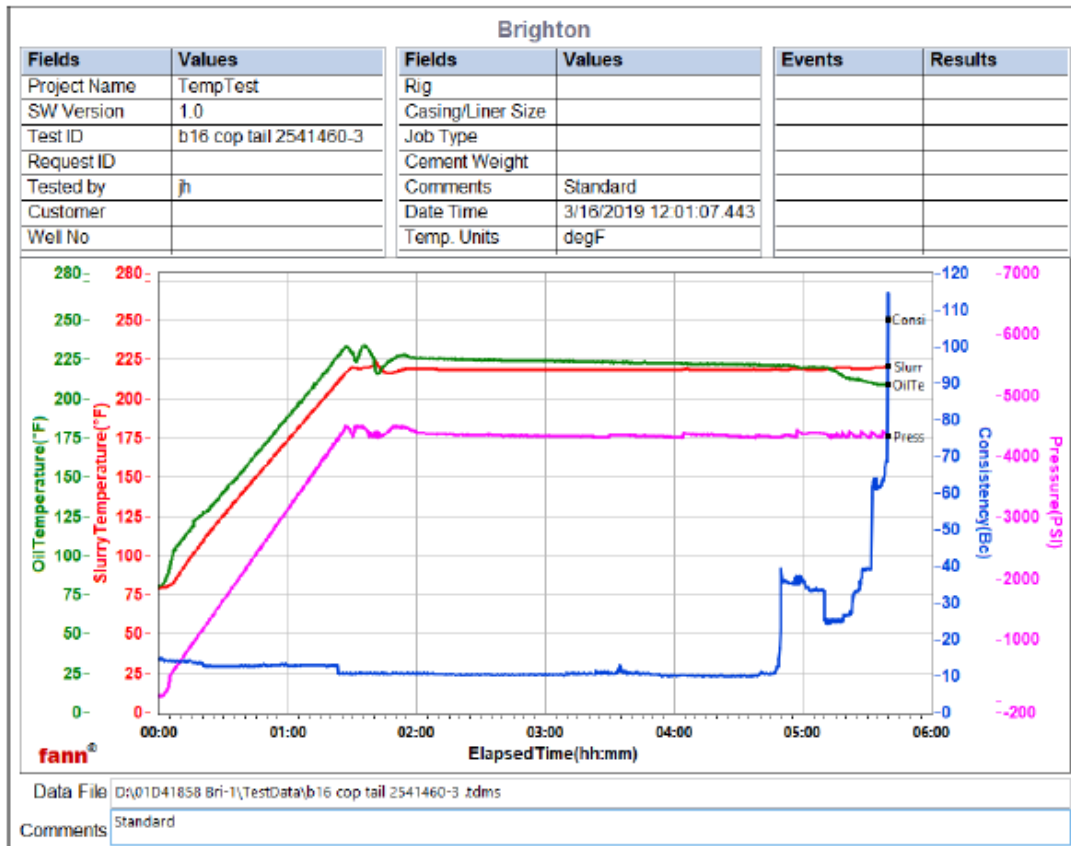
Conc	UOM	Cement/Additive	MP	Sample Type	Sample Date	Lot No.	Cement Properties		
100	% BWOC	Cement Blend					Slurry Density	13.5	lbm/gal
8.73	gal/sack	Field (Fresh) Water		Lab	01.03.19	3/1/19	Slurry Yield	1.79	ft ³ /sack
25	% BWOC	SS-200 silica flour	PB	Bulk Blend	16.03.19	na	Water Requirement	8.73	gal/sack
0.1	% BWOC	SA-1015 (PB)	PB	Bulk Blend	16.03.19	8g3717w	Total Mix Fluid	8.73	gal/sack
0.25	% BWOC	HR-5 (PB)	PB	Bulk Blend	16.03.19	1180200			
0.8	% BWOC	HALAD-344 (PB)	PB	Bulk Blend	16.03.19	20181201	Water Source	Field (Fresh) Water	
0.2	% BWOC	HALAD-413 (PB)	PB	Bulk Blend	16.03.19	m8j0686a0	Water Chloride		

Operation Test Results Request ID 2541460/3

Thickening Time - ON-OFF-ON, Request Test ID:36323227										17/MAR/2019
Test Temp (degF)	Pressure (psi)	Reached in (min)	30 Bc (hh:min)	50 Bc (hh:min)	70 Bc (hh:min)	100 Bc (hh:min)	Start Bc	Stirring before stop (mins)	Static Period (min)	Peak reading (BC)
219	4407	87	5:23	5:32	5:39	5:39	14.4	90	10	10.9

These are draft results and have not been approved for final use.

This report is the property of Halliburton Energy Services and neither it nor any part thereof, nor a copy thereof, is to be published or disclosed without first securing the expressed written approval of Halliburton. It may however be used in the course of regular business operations by any person or concern receiving such report from Halliburton. This report is for information purposes only and the content is limited to the sample described. Halliburton makes no warranties, expressed or implied, as to the accuracy of the contents or results. Any user of this report agrees Halliburton shall not be liable for any loss or damage regardless of cause, including any act or omission of Halliburton, resulting from the use hereof.



These are draft results and have not been approved for final use.

This report is the property of Halliburton Energy Services and neither it nor any part thereof, nor a copy thereof, is to be published or disclosed without first securing the expressed written approval of Halliburton. It may however be used in the course of regular business operations by any person or concern receiving such report from Halliburton. This report is for information purposes only and the content is limited to the sample described. Halliburton makes no warranties, expressed or implied, as to the accuracy of the contents or results. Any user of this report agrees Halliburton shall not be liable for any loss or damage regardless of cause, including any act or omission of Halliburton, resulting from the use hereof.

2.0 Real-Time Job Summary

2.1 Job Event Log

Type	Seq. No.	Activity	Graph Label	Date	Time	Source	DS Pump Press (psi)	DH Density (ppg)	Comb Pump Rate (bbl/min)	Pump Stg Tot (bbl)	Comments
Event	1	Call Out	Call Out	3/21/2019	02:30:00	USER					Crew called out and was requested to be on location @ 08:30.
Event	2	Depart Yard Safety Meeting	Depart Yard Safety Meeting	3/21/2019	07:30:00	USER					Crew discussed the route of travel and supervisor called in a journey.
Event	3	Depart from Service Center or Other Site	Depart from Service Center or Other Site	3/21/2019	07:40:00	USER					Crew left the yard.
Event	4	Casing on Bottom	Casing on Bottom	3/21/2019	08:00:00	USER					Casing on Bottom with the landing Joint. The rig circulated 8 bpm @ 930 psi showing 1178 units of gas with a total of 12,000 strokes before they shutdown and turned over to HES.
Event	5	Arrive at Location from Service Center	Arrive at Location from Service Center	3/21/2019	08:30:00	USER					Crew arrived on location on time and the rig had already landed the casing and was circulating.
Event	6	Safety Meeting - Assessment of Location	Safety Meeting - Assessment of Location	3/21/2019	08:40:00	USER					Spotting in trucks and supervisor met with the customer and got the well information. TD-18,010' TP-17,995' SJ-82' FC-17,913' Cas-5.5" 20# P110 PC-9.625" 36# Set @ 2154' Mud Weight-9.8 ppg OBM, TVD-7887' OH-8.5."
Event	7	Pre-Rig Up Safety	Pre-Rig Up Safety	3/21/2019	08:50:00	USER					Discussed rig up procedure

		Meeting	Meeting									
Event	8	Rig-Up Equipment	Rig-Up Equipment	3/21/2019	09:00:00	USER						and signed the JSA.
												Rigged up all HES equipment and lines.
Event	9	Rig-Up Completed	Rig-Up Completed	3/21/2019	09:30:00	USER						All HES equipment and lines rigged up safely.
Event	10	Pre-Job Safety Meeting	Pre-Job Safety Meeting	3/21/2019	10:00:00	USER	113.00	8.41	4.60	16.90		Discussed the job procedure and pressures with all personnel involved with the cement job.
Event	11	Check Weight	Check Weight	3/21/2019	10:35:00	COM4	67.00	8.33	0.00	19.80		Checked the weight of the spacer with the pressurized mud scales, scaled @ 10.5 ppg.
Event	12	Other	Other	3/21/2019	10:38:33	COM4	69.00	8.36	0.00	19.80		Fill lines with 3 bbls of water 3 bpm 420 psi.
Event	13	Test Lines	Test Lines	3/21/2019	10:46:13	COM4	5195.00	8.51	0.00	24.60		Tested the lines and the psi test lost more then we were allowed so we released the psi and swapped the 1" valve out.
Event	14	Test Lines	Test Lines	3/21/2019	10:53:05	COM4	5339.00	8.51	0.00	24.80		Re performed the psi test to 5000 psi and held for 2 min.
Event	15	Pump Spacer 1	Pump Spacer 1	3/21/2019	10:54:55	COM4	87.00	8.36	0.90	24.80		Pumped 60 bbls of Spacer @ 10.5 ppg 6.62 yield 42.5 gal/sk 5 bpm 380 psi.
Event	16	Drop Bottom Plug	Drop Bottom Plug	3/21/2019	11:06:04	COM4	321.00	10.62	5.20	55.30		@ 55 bbls of spacer gone we dropped the bottom plug on the fly and the customer and Halliburton rep witnessed.
Event	17	Pump Lead Cement	Pump Lead Cement	3/21/2019	11:15:37	COM4	373.00	12.12	4.10	78.20		Pumped 235 bbls of Lead cement @ 13.2 ppg 1.57 yield 7.54 gal/sk (840 sks) 8 bpm 620 psi.

Event	18	Check Weight	Check Weight	3/21/2019	11:17:03	COM4	328.00	12.84	3.30	5.10	Checked the weight of the Lead Cement with the pressurized mud scales, scaled @ 13.2 ppg.
Event	19	Pump Tail Cement	Pump Tail Cement	3/21/2019	11:50:12	COM4	438.00	13.48	8.30	0.10	Pumped 481 bbls of Tail Cement @ 13.5 ppg 1.79 yield 8.74 gal/sk (1510 sks) 8 bpm 470 psi.
Event	20	Check Weight	Check Weight	3/21/2019	11:50:20	COM4	432.00	13.53	8.20	1.20	Checked the weight of the Tail Cement with the pressurized mud scales, scaled @ 13.2 ppg.
Event	21	Shutdown	Shutdown	3/21/2019	12:58:03	COM4	142.00	13.51	0.00	512.70	Shutdown to wash pumps and lines up through the rigs flow line.
Event	22	Drop Top Plug	Drop Top Plug	3/21/2019	13:08:24	COM4	62.00	7.82	0.00	531.60	The customer and Halliburton rep witnessed the Top plug being loaded and dropped.
Event	23	Pump Displacement	Pump Displacement	3/21/2019	13:08:28	COM4	62.00	7.41	0.00	0.00	Pumped calculated displacement with the first 20 bbls with MMCR and rig supplied chemicals for the remainder of displacement.
Event	24	Displ Reached Cement	Displ Reached Cement	3/21/2019	13:15:04	COM4	958.00	8.29	10.10	63.40	@ 50 bbls away we caught the plug and maintained 10 bpm.
Event	25	Bump Plug	Bump Plug	3/21/2019	14:01:03	COM4					Bumped the plug, the final circulating psi was 2800 psi and took 1000 psi over to 3800 psi and shutdown and watched for 5 min.
Event	26	Pre-Rig Down Safety Meeting	Pre-Rig Down Safety Meeting	3/21/2019	14:05:00	USER	3990.00	8.52	0.00	471.60	Crew held a safety meeting discussing the rig down and flush stack procedure. Also all potential hazards associated with rigging

											down all HES equipment and lines.
Event	27	Other	Other	3/21/2019	14:05:13	COM4	3996.00	8.52	0.00	471.60	Checked the floats and the floats held, we got 5.5 bbls back .
Event	28	End Job	End Job	3/21/2019	14:07:09	COM4	61.00	8.37	0.00	471.70	Cement job complete, Calculated tops of cement @ TOTC-6249' TOLC-489' TOS- 27 bbls of spacer back to surface.
Event	29	Rig Down Lines	Rig Down Lines	3/21/2019	14:10:00	USER	52.00	8.40	0.00	471.70	The crew flushed the rigs flow line with sugar water and rigged down all HES equipment and lines.
Event	30	Rig-Down Completed	Rig-Down Completed	3/21/2019	15:00:00	USER					Rig down completed no one got hurt.
Event	31	Pre-Convoy Safety Meeting	Pre-Convoy Safety Meeting	3/21/2019	15:15:00	USER					The crew held a pre journey safety meeting discussing the route and potential hazards while driving. The supervisor called in a journey.
Event	32	Depart Location for Service Center or Other Site	Depart Location for Service Center or Other Site	3/21/2019	15:30:00	USER					Kamereon White and crew would like to thank you for your business and choosing Halliburton Cement. If you have any questions please give us a call.

3.0 Attachments

3.1 ConocoPhillips Prosper Farms 4-65 11-12 3DH Production Chart

