

Bost Farm 31C-11-L IFR 0' to 17236' Definitive Survey Geodetic Report

(Def Survey)

Report Date: July 18, 2019 - 10:13 AM
Client: SRC Energy
Field: CO, Weld County (NAD 83 NZ) - SRC
Structure / Slot: SRC Energy 07-05N-66W (Bost Farm 5-7 Pad DSU 22) / Bost Farm 31C-11-L
Well: Bost Farm 31C-11-L
Borehole: Original Hole
UWI / API#: Unknown / 05-123-47662
Survey Name: Bost Farm 31C-11-L IFR 0' to 17236' Definitive
Survey Date: May 20, 2019
Tort / AHD / DDI / ERD Ratio: 251.717 ° / 11089.398 ft / 6.827 / 1.547
Coordinate Reference System: NAD83 Colorado State Plane, Northern Zone, US Feet
Location Lat / Long: N 40° 25' 3.31680", W 104° 49' 42.11760"
Location Grid N/E Y/X: N 1395675.865 ftUS, E 3187006.707 ftUS
CRS Grid Convergence Angle: 0.4340 °
Grid Scale Factor: 0.99996107
Version / Patch: 2.10.760.0

Survey / DLS Computation: Minimum Curvature / Lubinski
Vertical Section Azimuth: 269.520 ° (True North)
Vertical Section Origin: 0.000 ft, 0.000 ft
TVD Reference Datum: KB 20ft
TVD Reference Elevation: 4898.000 ft above MSL
Seabed / Ground Elevation: 4878.000 ft above MSL
Magnetic Declination: 7.610 °
Total Gravity Field Strength: 999.0262mg (9.80665 Based)
Gravity Model: GARM
Total Magnetic Field Strength: 52251.000 nT
Magnetic Dip Angle: 66.610 °
Declination Date: July 01, 2019
Magnetic Declination Model: MAGvar IFR
North Reference: True North
Grid Convergence Used: 0.0000 °
Total Corr Mag North->True North: 7.6100 °
Local Coord Referenced To: Well Head

Comments	MD (ft)	Incl (°)	Azim True (°)	TVD (ft)	VSEC (ft)	NS (ft)	EW (ft)	DLS (°/100ft)	Northing (ftUS)	Easting (ftUS)	Latitude (°)	Longitude (°)
Surface	0.00	0.00	0.00	0.00	0.00	0.00	0.00	N/A	1395675.87	3187006.71	40.417588	-104.828366
KB Adjustment	20.00	0.00	313.09	20.00	0.00	0.00	0.00	0.00	1395675.87	3187006.71	40.417588	-104.828366
Begin IFR Survey	106.00	0.50	313.09	106.00	0.27	0.26	-0.27	0.58	1395676.12	3187006.43	40.417589	-104.828367
	191.00	0.54	10.34	191.00	0.47	0.90	-0.47	0.59	1395676.77	3187006.23	40.417590	-104.828368
	281.00	1.16	285.10	280.99	1.26	1.56	-1.28	1.38	1395677.41	3187005.42	40.417592	-104.828371
	370.00	3.20	265.11	369.92	4.61	1.58	-4.62	2.41	1395677.41	3187002.07	40.417592	-104.828383
	460.00	4.10	257.80	459.74	10.26	0.69	-10.27	1.12	1395676.47	3186996.43	40.417590	-104.828403
	550.00	5.58	248.35	549.42	17.49	-1.61	-17.48	1.86	1395674.13	3186989.24	40.417584	-104.828429
	640.00	5.61	247.50	638.99	25.65	-4.90	-25.61	0.10	1395670.77	3186981.13	40.417575	-104.828458
	730.00	6.51	250.39	728.48	34.55	-8.30	-34.48	1.06	1395667.30	3186972.29	40.417565	-104.828490
	820.00	6.40	252.62	817.91	44.17	-11.51	-44.08	0.30	1395664.02	3186962.72	40.417556	-104.828524
	910.00	6.05	252.61	907.38	53.51	-14.43	-53.39	0.39	1395661.03	3186953.43	40.417548	-104.828558
	1000.00	6.16	247.01	996.87	62.51	-17.73	-62.36	0.67	1395657.66	3186944.48	40.417539	-104.828590
	1090.00	5.96	244.65	1086.37	71.21	-21.62	-71.03	0.35	1395653.71	3186935.85	40.417529	-104.828621
	1180.00	6.27	250.51	1175.86	80.09	-25.26	-79.88	0.77	1395650.00	3186927.02	40.417519	-104.828653
	1270.00	5.89	252.15	1265.35	89.15	-28.31	-88.91	0.46	1395646.88	3186918.01	40.417510	-104.828685
	1360.00	5.91	249.45	1354.87	97.91	-31.35	-97.65	0.31	1395643.77	3186909.30	40.417502	-104.828717
	1450.00	5.97	252.72	1444.39	106.74	-34.37	-106.45	0.38	1395640.69	3186900.52	40.417494	-104.828748
	1540.00	5.70	250.78	1533.93	115.45	-37.23	-115.14	0.37	1395637.76	3186891.85	40.417486	-104.828780
	1630.00	5.74	252.89	1623.48	124.00	-40.03	-123.67	0.24	1395634.90	3186883.35	40.417478	-104.828810
	1720.00	5.99	255.55	1713.01	132.87	-42.52	-132.51	0.41	1395632.34	3186874.52	40.417471	-104.828842
Last IFR Survey 9 5/8" Casing Begin	1750.00	6.09	253.66	1742.84	135.92	-43.36	-135.56	0.74	1395631.48	3186871.49	40.417469	-104.828853
SLB_MWD Survey	1805.00	6.68	254.55	1797.50	141.81	-45.04	-141.44	1.09	1395629.76	3186865.62	40.417464	-104.828874
	1875.00	7.44	255.47	1866.97	150.15	-47.26	-149.76	1.09	1395627.48	3186857.32	40.417458	-104.828904
	1971.00	8.52	257.38	1962.04	163.13	-50.37	-162.71	1.16	1395624.26	3186844.39	40.417450	-104.828950
	2066.00	10.83	259.15	2055.68	178.79	-53.59	-178.35	2.45	1395620.93	3186828.78	40.417441	-104.829006
	2160.00	10.99	258.11	2147.98	196.26	-57.10	-195.79	0.27	1395617.29	3186811.37	40.417431	-104.829069
	2254.00	10.73	261.03	2240.30	213.70	-60.31	-213.20	0.65	1395613.95	3186793.98	40.417422	-104.829132
	2348.00	9.29	258.57	2332.86	229.80	-63.18	-229.28	1.60	1395610.96	3186777.92	40.417415	-104.829189
	2442.00	10.21	260.82	2425.51	245.48	-66.01	-244.94	1.06	1395608.01	3186762.28	40.417407	-104.829246
	2538.00	10.03	258.00	2520.01	262.08	-69.10	-261.51	0.55	1395604.79	3186745.74	40.417398	-104.829305
	2633.00	9.94	259.54	2613.58	278.26	-72.31	-277.66	0.30	1395601.46	3186729.61	40.417390	-104.829363
	2728.00	10.34	260.87	2707.09	294.76	-75.15	-294.14	0.49	1395598.49	3186713.15	40.417382	-104.829422
	2821.00	9.59	254.43	2798.69	310.50	-78.56	-309.85	1.45	1395594.97	3186697.47	40.417372	-104.829479
	2914.00	9.58	260.72	2890.39	325.63	-81.89	-324.95	1.13	1395591.52	3186682.40	40.417363	-104.829533
	3008.00	10.00	255.02	2983.03	341.26	-85.26	-340.56	1.12	1395588.04	3186666.82	40.417354	-104.829589
	3193.00	9.51	264.88	3165.37	372.04	-90.77	-371.30	0.94	1395582.29	3186636.12	40.417339	-104.829699
	3287.00	9.38	264.65	3258.09	387.42	-92.18	-386.66	0.14	1395580.76	3186620.77	40.417335	-104.829755
	3381.00	9.93	264.14	3350.76	403.12	-93.72	-402.34	0.59	1395579.10	3186605.10	40.417331	-104.829811
	3569.00	10.08	263.47	3535.90	435.61	-97.25	-434.81	0.10	1395575.33	3186575.67	40.417321	-104.829928
	3663.00	10.33	262.88	3628.41	452.16	-99.23	-451.34	0.29	1395573.23	3186556.15	40.417316	-104.829987
	3757.00	10.22	261.99	3720.91	468.80	-101.43	-467.96	0.21	1395570.90	3186539.54	40.417310	-104.830047
	3850.00	10.20	261.79	3812.43	485.14	-103.76	-484.28	0.04	1395568.45	3186523.24	40.417303	-104.830105
	3942.00	10.14	260.78	3902.99	501.21	-106.22	-500.34	0.20	1395565.86	3186507.21	40.417296	-104.830163
	4035.00	9.88	266.44	3994.58	517.27	-108.03	-516.38	1.09	1395563.94	3186491.18	40.417291	-104.830220
	4128.00	10.01	257.77	4086.18	533.15	-110.23	-532.24	1.61	1395561.61	3186475.34	40.417285	-104.830277
	4222.00	10.13	261.32	4178.74	549.33	-113.21	-548.40	0.67	1395558.51	3186459.20	40.417277	-104.830335
	4315.00	9.80	262.90	4270.33	565.29	-115.42	-564.34	0.46	1395556.17	3186443.28	40.417271	-104.830393
	4408.00	10.24	268.77	4361.92	581.42	-116.58	-580.46	1.19	1395554.90	3186427.17	40.417268	-104.830451
	4501.00	9.97	264.79	4453.48	597.71	-117.49	-596.74	0.81	1395553.87	3186410.89	40.417265	-104.830509
	4594.00	9.76	261.51	4545.10	613.53	-119.38	-612.56	0.64	1395551.85	3186395.10	40.417260	-104.830566
	4780.00	9.88	260.55	4728.38	644.91	-124.33	-643.89	0.11	1395546.67	3186363.80	40.417247	-104.830678
	4873.00	9.89	260.61	4820.00	660.68	-126.94	-659.64	0.01	1395543.93	3186348.08	40.417240	-104.830735
	4966.00	9.60	261.28	4911.65	676.24	-129.42	-675.18	0.33	1395541.34	3186332.56	40.417233	-104.830791
	5059.00	9.74	262.48	5003.33	691.72	-131.63	-690.64	0.27	1395539.02	3186317.11	40.417227	-104.830846
	5152.00	11.06	262.89	5094.80	708.39	-133.76	-707.29	1.42	1395536.76	3186300.48	40.417221	-104.830906
	5244.00	9.95	262.01	5185.26	725.03	-135.96	-723.92	1.22	1395534.44	3186283.87	40.417215	-104.830966
	5338.00	4.30	260.41	5278.50	736.57	-137.67	-735.44	6.01	1395532.63	3186272.36	40.417210	-104.831007
	5431.00	1.14	216.68	5371.39	740.57	-139.00	-739.44	3.84	1395531.28	3186268.38	40.417206	-104.831022
	5524.00	0.23	80.48	5464.38	740.95	-139.71	-739.80	1.41	1395530.57	3186268.01	40.417204	-104.831023
	5617.00	0.61	306.23	5557.38	741.16	-139.38	-740.02	0.85	1395530.89	3186267.79	40.417205	-104.831024
	5710.00	0.56	268.89	5650.38	742.01	-139.10	-740.87	0.41	1395531.17	3186266.94	40.417206	-104.831027
	5803.00	0.07	276.20	5743.37	742.52	-139.10	-741.38	0.53	1395531.16	3186266.43	40.417206	-104.831029
	5897.00	0.16	8.84	5837.37	742.55	-138.97	-741.41	0.18	1395531.29	3186266.40	40.417207	-104.831029
	5990.00	0.22	275.45	5930.37	742.71	-138.83	-741.57	0.30	1395531.43	3186266.24	40.417207	-104.831029
	6083.00	0.49	329.44	6023.37	743.08	-138.46	-741.95	0.43	1395531.79	3186265.86	40.417208	-104.831031
	6177.00	0.52	247.89	6117.37	743.68	-138.28	-742.55	0.70	1395531.97	3186265.26	40.417208	-104.831033
	6270.00	0.49	274.54	6210.37	744.46	-138.40	-743.33	0.25	1395531.84	3186264.48	40.417208	-104.831036
	6364.00	0.34	106.90	6304.37	744.60	-138.45	-743.47	0.88	1395531.79	3186264.34	40.417208	-104.831036
	6458.00	2.14	204.00	6398.34	745.06	-140.14	-743.92	2.35	1395530.11	3186263.90	40.417203	-104.831038
	6551.00	7.08	262.79	6491.05	751.48	-142.44	-750.31	6.71	1395527.75	3186257.52	40.417197	-104.831061
	6643.00	11.55	268.49	6581.81	766.33	-143.40	-765.15	4.96	1395526.68	3186242.69	40.417194	-104.831114
	6737.00	17.43	272.52	6672.79	789.82	-143.03	-788.65	6.34	1395526.88	3186219.20</		

Comments	MD (ft)	Incl (°)	Azim True (°)	TVD (ft)	VSEC (ft)	NS (ft)	EW (ft)	DLS (°/100ft)	Northing (ftUS)	Easting (ftUS)	Latitude (°)	Longitude (°)
	7018.00	39.74	269.70	6917.29	924.83	-145.92	-923.64	8.18	1395522.96	318604.24	40.417187	-104.831683
	7112.00	49.07	269.50	6984.37	990.53	-146.39	-989.34	9.93	1395521.99	3186018.55	40.417186	-104.831919
	7205.00	56.37	271.27	7040.67	1064.46	-145.84	-1063.28	7.99	1395521.99	3185944.61	40.417188	-104.832185
	7299.00	64.85	269.92	7086.76	1146.27	-145.03	-1145.10	9.11	1395522.18	3185862.79	40.417190	-104.832478
	7391.00	69.29	270.29	7122.59	1230.98	-144.87	-1229.81	4.84	1395521.69	3185778.08	40.417190	-104.832783
	7484.00	77.56	269.73	7149.10	1320.03	-144.86	-1318.87	8.91	1395521.03	3185689.03	40.417190	-104.833102
	7577.00	86.63	269.98	7161.88	1412.05	-145.09	-1410.89	9.76	1395520.10	3185597.02	40.417190	-104.833433
	7669.00	90.44	266.67	7164.23	1503.97	-147.78	-1502.79	5.48	1395516.71	3185505.14	40.417182	-104.833763
	7763.00	91.44	267.00	7162.69	1597.85	-152.97	-1596.63	1.12	1395510.81	3185411.35	40.417168	-104.834100
	7856.00	91.62	267.18	7160.20	1690.74	-157.69	-1689.48	0.27	1395505.39	3185318.54	40.417155	-104.834433
	7949.00	91.57	268.52	7157.61	1783.66	-161.18	-1782.37	1.44	1395501.20	3185225.68	40.417145	-104.834767
	8041.00	91.41	266.49	7155.22	1875.57	-165.18	-1874.25	2.21	1395496.50	3185133.84	40.417134	-104.835097
	8134.00	91.29	266.63	7153.03	1968.42	-170.76	-1967.06	0.20	1395490.22	3185041.08	40.417119	-104.835430
	8227.00	91.13	267.28	7151.07	2061.30	-175.70	-2059.90	0.72	1395484.58	3184948.28	40.417105	-104.835764
	8321.00	90.60	266.66	7149.65	2155.20	-180.67	-2153.76	0.87	1395478.90	3184854.47	40.417092	-104.836101
	8414.00	90.90	266.71	7148.43	2248.08	-186.04	-2246.60	0.33	1395472.82	3184761.68	40.417077	-104.836434
	8507.00	90.85	265.91	7147.01	2340.92	-192.03	-2339.39	0.86	1395466.13	3184668.93	40.417061	-104.836767
	8600.00	90.74	267.34	7145.72	2433.79	-197.50	-2432.22	1.54	1395459.96	3184576.15	40.417046	-104.837101
	8692.00	91.14	267.35	7144.21	2525.71	-201.76	-2524.11	0.43	1395455.00	3184484.30	40.417034	-104.837431
	8785.00	91.13	267.53	7142.38	2618.63	-205.92	-2617.00	0.19	1395450.14	3184391.45	40.417022	-104.837764
	8879.00	90.55	267.32	7141.00	2712.56	-210.14	-2710.89	0.66	1395445.21	3184297.60	40.417011	-104.838102
	8973.00	89.83	267.20	7140.69	2806.48	-214.63	-2804.78	0.78	1395440.00	3184203.74	40.416998	-104.838439
	9066.00	89.60	266.98	7141.15	2899.40	-219.35	-2897.66	0.35	1395434.58	3184110.91	40.416985	-104.838772
	9160.00	90.02	268.33	7141.46	2993.35	-223.20	-2991.58	1.51	1395430.02	3184017.03	40.416975	-104.839110
	9253.00	89.79	267.25	7141.61	3086.30	-226.79	-3084.51	1.19	1395425.73	3183924.13	40.416965	-104.839443
	9346.00	89.69	268.78	7142.03	3179.27	-230.01	-3177.45	1.65	1395421.81	3183831.22	40.416956	-104.839777
	9439.00	89.79	269.10	7142.46	3272.26	-231.73	-3270.43	0.36	1395419.38	3183738.26	40.416951	-104.840111
	9532.00	90.34	269.74	7142.35	3365.26	-232.67	-3363.43	0.91	1395417.74	3183645.28	40.416949	-104.840445
	9624.00	90.69	269.62	7141.52	3457.25	-233.18	-3455.42	0.40	1395416.53	3183553.29	40.416947	-104.840775
	9717.00	89.75	268.97	7141.16	3550.25	-234.33	-3548.41	1.23	1395414.68	3183460.32	40.416944	-104.841109
	9810.00	90.28	269.31	7141.14	3643.25	-235.72	-3641.40	0.68	1395412.58	3183367.34	40.416940	-104.841443
	9903.00	90.14	269.49	7140.79	3736.25	-236.70	-3734.40	0.25	1395410.90	3183274.36	40.416938	-104.841777
	9996.00	90.53	268.71	7140.25	3829.24	-238.16	-3827.38	0.93	1395408.74	3183181.40	40.416933	-104.842111
	10089.00	90.25	270.06	7139.65	3922.24	-239.16	-3920.37	1.49	1395407.03	3183088.42	40.416931	-104.842445
	10182.00	90.35	270.67	7139.20	4015.23	-238.56	-4013.37	0.67	1395406.92	3182995.42	40.416932	-104.842779
	10275.00	90.43	269.84	7138.57	4108.22	-238.15	-4106.37	0.90	1395406.63	3182902.43	40.416933	-104.843113
	10367.00	90.50	268.82	7137.81	4200.21	-239.23	-4198.35	1.11	1395404.86	3182810.46	40.416930	-104.843443
	10459.00	90.36	269.71	7137.13	4292.21	-240.41	-4290.34	0.98	1395402.98	3182718.48	40.416927	-104.843774
	10552.00	90.25	269.08	7136.63	4385.20	-241.39	-4383.34	0.69	1395401.30	3182625.50	40.416924	-104.844108
	10646.00	90.30	270.17	7136.18	4479.20	-242.00	-4477.33	1.16	1395399.97	3182531.52	40.416923	-104.844445
	10738.00	90.06	269.90	7135.90	4571.20	-242.95	-4569.33	0.39	1395399.33	3182439.53	40.416923	-104.844776
	10831.00	90.05	269.49	7135.81	4664.20	-241.44	-4662.33	0.44	1395398.13	3182346.54	40.416921	-104.845110
	10925.00	89.27	269.70	7136.37	4758.19	-243.11	-4756.32	0.85	1395396.75	3182252.55	40.416919	-104.845447
	11018.00	89.29	269.66	7137.54	4851.19	-243.63	-4849.31	0.05	1395395.53	3182159.57	40.416918	-104.845781
	11110.00	89.24	269.99	7138.72	4943.18	-243.91	-4941.31	0.36	1395394.55	3182067.59	40.416917	-104.846112
	11203.00	89.00	270.93	7140.15	5036.15	-243.16	-5034.29	1.04	1395394.59	3181974.61	40.416919	-104.846446
	11295.00	89.29	269.23	7141.52	5128.14	-243.03	-5126.28	1.87	1395394.03	3181882.63	40.416919	-104.846776
	11388.00	89.61	269.89	7142.41	5221.13	-243.75	-5219.64	0.79	1395392.61	3181789.64	40.416917	-104.847110
	11482.00	88.92	268.13	7143.61	5315.11	-245.37	-5313.25	2.01	1395390.27	3181695.69	40.416913	-104.847447
	11578.00	89.28	268.20	7145.12	5411.08	-248.44	-5409.18	0.38	1395386.47	3181599.78	40.416904	-104.847792
	11671.00	89.67	270.55	7145.98	5504.06	-249.46	-5502.17	2.56	1395384.75	3181506.81	40.416902	-104.848126
	11764.00	90.77	269.32	7145.62	5597.06	-249.56	-5595.16	1.78	1395383.94	3181413.82	40.416901	-104.848460
	11856.00	90.96	270.31	7144.24	5689.05	-249.86	-5687.15	1.10	1395382.95	3181321.84	40.416900	-104.848790
	11950.00	90.72	269.49	7142.86	5783.03	-250.02	-5781.14	0.91	1395382.07	3181227.86	40.416900	-104.849128
	12044.00	90.72	269.15	7141.68	5877.02	-251.14	-5875.13	0.36	1395380.25	3181133.89	40.416897	-104.849465
	12137.00	90.24	272.44	7140.90	5969.99	-249.85	-5968.10	3.58	1395380.83	3181040.91	40.416890	-104.849799
	12231.00	88.62	274.47	7141.84	6063.75	-244.19	-6061.92	2.76	1395385.79	3180947.06	40.416916	-104.850136
	12325.00	87.27	271.60	7145.21	6157.50	-239.21	-6155.71	3.37	1395390.05	3180853.23	40.416929	-104.850473
	12419.00	89.34	270.19	7147.99	6251.43	-237.74	-6249.65	2.66	1395390.80	3180759.29	40.416933	-104.850810
	12512.00	90.24	269.94	7148.33	6344.42	-237.64	-6342.65	1.00	1395390.20	3180666.30	40.416933	-104.851144
	12606.00	89.84	269.23	7148.27	6438.42	-238.32	-6436.65	0.87	1395388.81	3180572.31	40.416932	-104.851482
	12699.00	89.53	269.58	7148.78	6531.42	-239.29	-6529.64	0.50	1395387.14	3180479.33	40.416929	-104.851816
	12792.00	89.50	269.00	7149.57	6624.41	-240.44	-6622.63	0.62	1395385.29	3180386.36	40.416926	-104.852150
	12885.00	90.02	268.63	7149.96	6717.40	-242.36	-6715.61	0.69	1395382.66	3180293.40	40.416920	-104.852484
	12979.00	90.09	268.66	7149.87	6811.39	-244.58	-6809.58	0.08	1395379.72	3180199.45	40.416914	-104.852821
	13074.00	89.90	267.87	7149.88	6906.37	-247.46	-6904.54	0.85	1395376.13	3180104.52	40.416906	-104.853162
	13166.00	89.90	268.23	7150.04	6998.34	-250.59	-6996.49	0.39	1395372.30	3180012.61	40.416897	-104.853502
	13259.00	88.95	269.33	7150.97	7091.32	-252.57	-7089.46	1.56	1395369.62	3179919.66	40.416892	-104.853826
	13352.00	89.34	269.71	7152.36	7184.31	-253.35	-7182.44	0.59	1395368.13	3179826.68	40.416890	-104.854160
	13445.00	88.45	270.21	7154.15	7277.29	-253.42	-7275.42	1.10	1395367.37	3179733.71	40.416889	-104.854494
	13538.00	87.12	271.33	7157.75	7370.20	-252.17	-7368.34	1.87	1395367.91	3179640.79	40.416893	-104.854828
	13630.00	86.96	269.24	7162.50	7462.06	-251.71	-7460.21	2.28	1395367.67	3179548.92	40.416894	-104.855158
	13724.00	88.92	269.72	7165.88	7556.00	-252.56	-7554.15	2.15	1395366.11	3179455.00	40.416892	-104.855495
	13817.00	90.56	268.54	7166.30	7648.99	-253.97	-7647.13	2.17	1395363.99	3179362.03	40.416888	-104.855829
	13910.00	91.11	270.00	7164.95	7741.97	-255.16	-7740.11	1.68	1395362.10	3179269.07	40.416884	-104.856163
	14003.00	90.55	270.67	7163.60	7834.95	-254.62	-7833.10	0.94	1395361.94	3179176.08	40.416886	-104.856497
	14095.00	90.08	269.12	7163.10	7926.95	-254.78	-7925.09	1.76	1395361.08	3179084.10	40.416885	-104.856827
	14189.00	89.92	270.86	7163.10	8							

Comments	MD (ft)	Incl (°)	Azim True (°)	TVD (ft)	VSEC (ft)	NS (ft)	EW (ft)	DLS (°/100ft)	Northing (ftUS)	Easting (ftUS)	Latitude (°)	Longitude (°)
Last SLB_MWD Survey	17214.00	88.48	268.16	7144.49	11044.39	-305.39	-11042.22	2.68	1395286.87	3175967.57	40.416743	-104.868022
Projection to Bit	17236.00	88.48	268.16	7145.07	11066.38	-306.09	-11064.20	0.00	1395286.00	3175945.59	40.416741	-104.868101

Survey Type: Def Survey

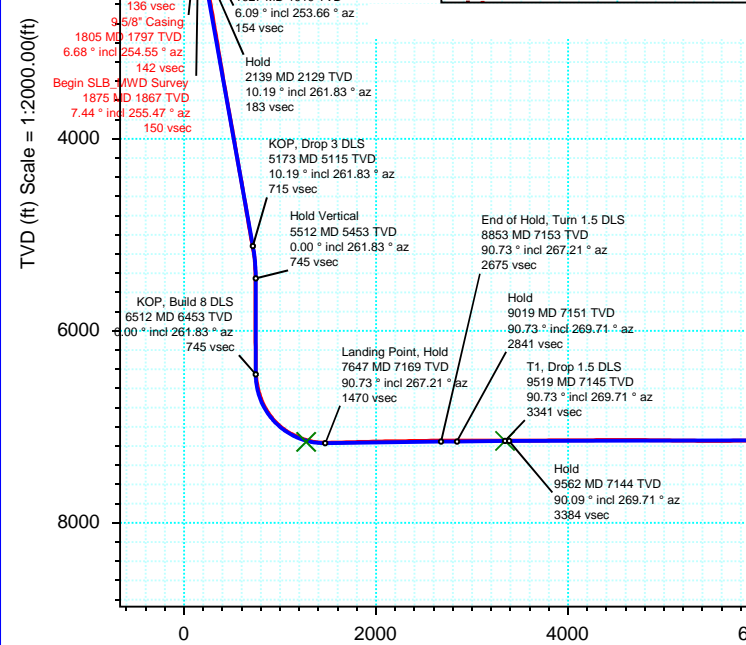
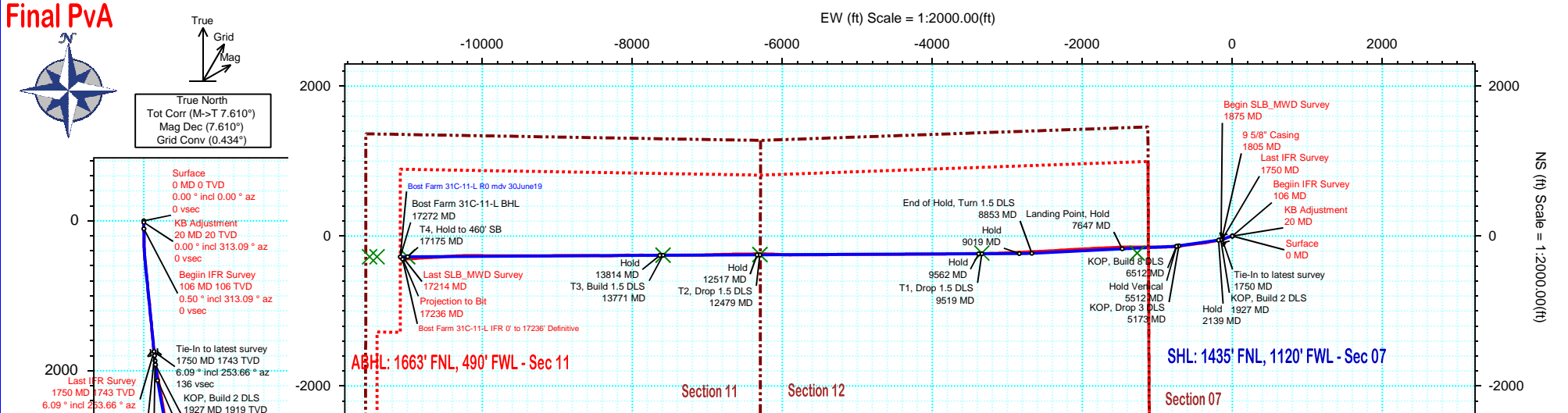
Survey Error Model: ISCWSA Rev 0 *** 3-D 95.000% Confidence 2.7955 sigma
 Survey Program:

Description	Part	MD From (ft)	MD To (ft)	EOU Freq (ft)	Hole Size (in)	Casing Diameter (in)	Survey Tool Type	Borehole / Survey
	1	0.000	20.000	1/98.425	13.500	9.625	NAL_MWD_IFR1-Depth Only	Original Hole / Bost Farm 31C-11-L IFR 0' to 17236' Definitive
	1	20.000	20.000	Act Stns	13.500	9.625	NAL_MWD_IFR1-Depth Only	Original Hole / Bost Farm 31C-11-L IFR 0' to 17236' Definitive
	1	20.000	1805.000	Act Stns	13.500	9.625	NAL_MWD_IFR1	Original Hole / Bost Farm 31C-11-L IFR 0' to 17236' Definitive
	1	1805.000	17236.000	Act Stns	8.500	5.500	NAL_MWD_IFR1+MS	Original Hole / Bost Farm 31C-11-L IFR 0' to 17236' Definitive



Borehole: Original Hole	Well: Bost Farm 31C-11-L	Field: CO, Weld County (NAD 83 NZ) - SRC	Structure: SRC Energy 07-05N-66W (Bost Farm 5-7 Pad DSU 22)
-----------------------------------	------------------------------------	--	---

Gravity & Magnetic Parameters		Surface Location NAD83 Colorado State Plane, Northern Zone, US Feet			Miscellaneous	
Model: MAgvar IFR	Dip: 66.61°	Date: 01-Jul-2019	Lat: N 40 25 3.32	Northing: 1395675.87ftUS	Grid Conv: 0.434°	Slot: Bost Farm 31C-11-L
MagDec: 7.61°	FS: 52251nT	Gravity FS: 999.026mgn (9.80665 Based)	Lon: W 104 49 42.12	Easting: 3187006.71ftUS	Scale Fact: 0.99996107	TVD Ref: KB 20ft(4898ft above MSL)
						Plan: Bost Farm 31C-11-L IFR 0' to 17236' Definitive



Target Name	Target Description	Latitude	Longitude	Surface Location	TVD	VSec	N(+)/S(-)	Local Coord	E(+)/W(-)
Bost Farm 5-7 Pad DSU 22 - Sec 12-11		N 40 24 50.94	W 104 49 41.85	1395675.86543958	4898.00	-9.83	-1252.51	20.33	
Bost Farm 5-7 Pad DSU 22 - Sec 12-11 - CL		N 40 24 50.94	W 104 49 41.85	3187006.52	4898.00	-9.83	-1252.51	20.33	
Bost Farm 5-7 Pad DSU 22 - Sec 12-11 - HL		N 40 25 2.72	W 104 49 42.12	3187006.61	4898.00	1.06	-60.11	-0.56	
Bost Farm 31C-11-L - T2		N 40 25 0.88	W 104 51 3.55	16878587.69	1681893.01	7140.10	6300.71	-246.21	-6298.86
Bost Farm 31C-11-L - T2		N 40 25 0.56	W 104 52 10.83	3187006.61	3175507.00	7141.10	11504.51	-276.38	-11502.60
Bost Farm 31C-11-L - T4		N 40 25 0.56	W 104 52 4.27	16878548.53	1677198.29	7141.10	10997.46	-276.27	-10995.53
Bost Farm 31C-11-L - BPZ		N 40 25 0.56	W 104 52 9.54	3187006.96	3175606.96	7141.10	11404.55	-276.07	-11402.64
Bost Farm 31C-11-L - T1		N 40 25 1.07	W 104 50 25.29	1684851.24	1744.80	3341.20	-227.27	-3339.41	
Bost Farm 31C-11-L - T3		N 40 25 0.79	W 104 51 20.26	1680601.39	7150.80	7592.89	-254.48	-7591.02	
Bost Farm 31C-11-L - TOP		N 40 25 1.09	W 104 49 58.52	1395440.80	3185739.88	7156.03	1270.47	-225.48	-1268.63

Critical Point	MD	INCL	AZIM	TVD	VSEC	N(+)/S(-)	E(+)/W(-)	DLS
Surface	0.00	0.00	0.00	0.00	0.00	0.00	0.00	
KB Adjustment	20.00	0.00	313.09	20.00	0.00	0.00	0.00	0.00
Begin IFR Survey	106.00	0.50	313.09	106.00	0.27	0.26	-0.27	0.58
Last IFR Survey	1750.00	6.09	253.66	1742.84	135.92	-43.36	-135.56	0.74
9 5/8\"/>								

Vertical Section (ft) Azim = 269.52° Scale = 1:2000.00(ft) Origin = 0N/-S, 0E/-W