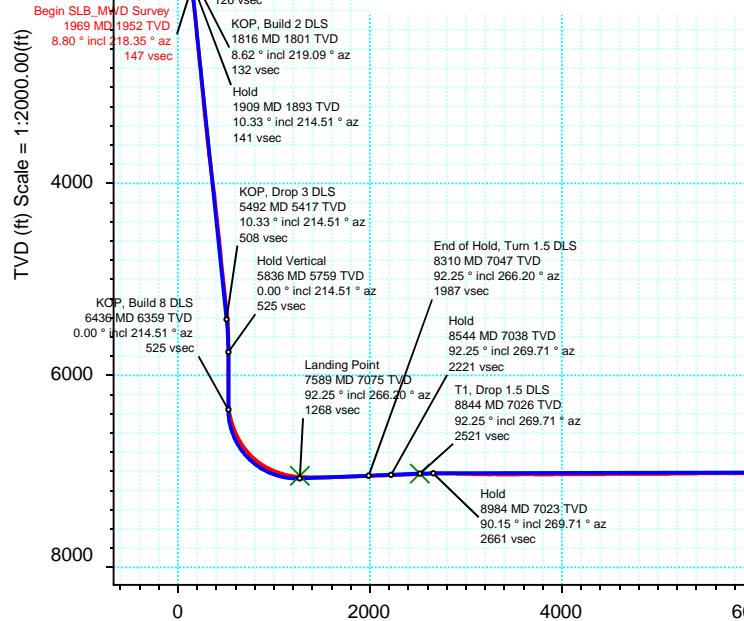
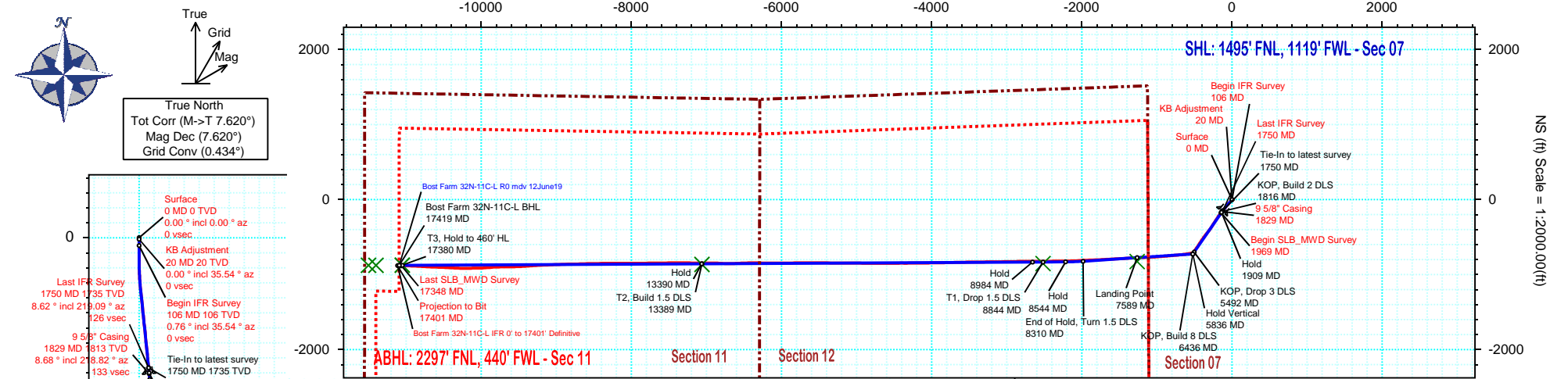




<b>Borehole:</b> <b>Original Hole</b>	<b>Well:</b> <b>Bost Farm 32N-11C-L</b>	<b>Field:</b> <b>CO, Weld County (NAD 83 NZ) - SRC</b>	<b>Structure:</b> <b>SRC Energy 07-05N-66W (Bost Farm 5-7 Pad DSU 22)</b>
--	--	---	--

<b>Gravity &amp; Magnetic Parameters</b>		<b>Surface Location</b> NAD83 Colorado State Plane, Northern Zone, US Feet			<b>Miscellaneous</b>	
Model: Surcon IFR	Dip: 66.62°	Date: 13-Jun-2019	Lat: N 40 25 2.72	Northing: 1395615.75ftUS	Grid Conv: 0.434°	Slot: Bost Farm 32N-11C-L
MagDec: 7.62°	FS: 52256NT	Gravity FS: 999.025mgn (9.80665 Based)	Lon: W 104 49 42.12	Easting: 3187006.61ftUS	Scale Fact: 0.99996107	TVD Ref: KB 20ft(4898ft above MSL)
Plan: Bost Farm 32N-11C-L IFR 0' to 17401' Definitive						

## Final PvA



Target Description		Surface Location						Grid Coord		Local Coord	
		Northing: 1395615.75372663	Easting: 3187006.60533379	Latitude: N 40 25 2.72	Longitude: W 104 49 42.12	VSec Azimuth: 269.75					
Target Name	Latitude	Longitude	Northing	Easting	TVD	VSec	N(+)/S(-)	E(+)/W(-)	DLS		
Bost Farm 5-7 Pad DSU 22 - Sec 12-11	N 40 24 50.94	W 104 49 41.85	1394423.60	3187036.52	4898.00	-15.68	-1192.40	20.89			
Bost Farm 5-7 Pad DSU 22 - Sec 12-11 - CL	N 40 24 50.94	W 104 49 41.85	1394423.60	3187036.52	4898.00	-15.68	-1192.40	20.88			
Bost Farm 5-7 Pad DSU 22 - Sec 12-11 - HL	N 40 25 2.72	W 104 49 42.12	1395615.75	3187006.61	4898.00	0.00	0.00	0.00			
Bost Farm 32N-11C-L - T3	N 40 24 54.06	W 104 52 5.01	14677890.36	1677142.44	6999.80	11055.83	-874.49	-11052.12			
Bost Farm 32N-11C-L BHL	N 40 24 54.03	W 104 52 10.83	1394651.56	3175511.98	6999.80	11505.79	-877.14	-11502.07			
Bost Farm 32N-11C-L BPZ	N 40 24 54.04	W 104 52 9.53	1394653.00	3175611.93	7002.56	11405.82	-876.45	-11402.10			
Bost Farm 32N-11C-L - T2	N 40 24 54.17	W 104 51 13.42	14677907.85	1681131.60	7011.60	7065.05	-864.74	-7061.34			
Bost Farm 32N-11C-L - T1	N 40 24 54.29	W 104 50 14.66	14677927.75	1685674.12	7025.80	2520.67	-853.65	-2516.97			
Bost Farm 32N-11C-L TOP	N 40 24 54.56	W 104 49 58.48	1394780.37	3185748.19	7047.94	1268.35	-825.87	-1264.76			

Critical Points										
Critical Point	MD	INCL	AZIM	TVD	VSEC	N(+)/S(-)	E(+)/W(-)	DLS		
Surface	0.00	0.00	0.00	0.00	0.00	0.00	0.00	0.00		
KB Adjustment	20.00	0.00	35.54	20.00	0.00	0.00	0.00	0.00		
Begin IFR Survey	106.00	0.76	35.54	106.00	-0.33	0.46	0.33	0.88		
Last IFR Survey	1750.00	8.62	219.09	1735.30	125.72	-150.01	-125.07	0.63		
9 5/8" Casing	1829.00	8.68	218.82	1813.40	133.23	-159.25	-132.54	0.10		
Begin SLB_MWD Survey	1969.00	8.80	218.35	1951.77	146.57	-175.88	-145.81	0.10		
Last SLB_MWD Survey	17348.00	90.49	272.17	7001.86	11065.60	-881.89	-11061.86	1.95		
Projection to Bit	17401.00	90.49	272.17	7001.40	11118.55	-879.88	-11114.82	0.00		

## Bost Farm 32N-11C-L IFR 0' to 17401' Definitive Survey Geodetic Report

(Def Survey)

**Report Date:** July 01, 2019 - 03:29 PM  
**Client:** SRC Energy  
**Field:** CO, Weld County (NAD 83 NZ) - SRC  
**Structure / Slot:** SRC Energy 07-05N-66W (Bost Farm 5-7 Pad DSU 22) / Bost Farm 32N-11C-L  
**Well:** Bost Farm 32N-11C-L  
**Borehole:** Original Hole  
**UWI / API#:** Unknown / 05-123-47667  
**Survey Name:** Bost Farm 32N-11C-L IFR 0' to 17401' Definitive  
**Survey Date:** May 23, 2019  
**Tort / AHD / DDI / ERD Ratio:** 272.662 ° / 11491.327 ft / 6.888 / 1.627  
**Coordinate Reference System:** NAD83 Colorado State Plane, Northern Zone, US Feet  
**Location Lat / Long:** N 40° 25' 2.72280", W 104° 49' 42.12480"  
**Location Grid N/E Y/X:** N 1395615.754 ftUS, E 3187006.605 ftUS  
**CRS Grid Convergence Angle:** 0.4340 °  
**Grid Scale Factor:** 0.99996107  
**Version / Patch:** 2.10.760.0

**Survey / DLS Computation:** Minimum Curvature / Lubinski  
**Vertical Section Azimuth:** 269.750 ° (True North)  
**Vertical Section Origin:** 0.000 ft, 0.000 ft  
**TVD Reference Datum:** KB 20ft  
**TVD Reference Elevation:** 4898.000 ft above MSL  
**Seabed / Ground Elevation:** 4878.000 ft above MSL  
**Magnetic Declination:** 7.620 °  
**Total Gravity Field Strength:** 999.0246mgn (9.80665 Based)  
**Gravity Model:** GARM  
**Total Magnetic Field Strength:** 52256.000 nT  
**Magnetic Dip Angle:** 66.620 °  
**Declination Date:** June 13, 2019  
**Magnetic Declination Model:** Surcon IFR  
**North Reference:** True North  
**Grid Convergence Used:** 0.0000 °  
**Total Corr Mag North->True North:** 7.6200 °  
**Local Coord Referenced To:** Well Head

Comments	MD (ft)	Incl (°)	Azim True (°)	TVD (ft)	VSEC (ft)	NS (ft)	EW (ft)	DLS (°/100ft)	Northing (ftUS)	Easting (ftUS)	Latitude (°)	Longitude (°)
Surface	0.00	0.00	0.00	0.00	0.00	0.00	0.00	N/A	1395615.75	3187006.61	40.417423	-104.828368
KB Adjustment	20.00	0.00	35.54	20.00	0.00	0.00	0.00	0.00	1395615.75	3187006.61	40.417423	-104.828368
Begin IFR Survey	106.00	0.76	35.54	106.00	-0.33	0.46	0.33	0.88	1395616.22	3187006.93	40.417424	-104.828367
	191.00	0.45	7.40	190.99	-0.71	1.25	0.70	0.49	1395617.01	3187007.30	40.417426	-104.828365
	281.00	0.17	220.24	280.99	-0.67	1.50	0.66	0.67	1395617.26	3187007.26	40.417427	-104.828366
	370.00	1.73	214.13	369.98	0.18	0.29	-0.18	1.75	1395616.04	3187006.43	40.417424	-104.828369
	460.00	3.65	220.77	459.87	2.82	-3.00	-2.81	2.16	1395612.73	3187003.82	40.417415	-104.828378
	550.00	5.54	219.95	549.58	7.51	-8.51	-7.47	2.10	1395607.19	3186999.20	40.417400	-104.828395
	640.00	8.16	220.71	638.93	14.50	-16.68	-14.43	2.91	1395598.97	3186992.30	40.417377	-104.828420
	730.00	9.18	220.02	727.90	23.33	-27.02	-23.21	1.14	1395588.56	3186983.60	40.417349	-104.828451
	820.00	9.32	222.26	816.73	32.89	-37.91	-32.73	0.43	1395577.60	3186974.17	40.417319	-104.828486
	910.00	8.71	219.66	905.62	42.19	-48.55	-41.98	0.81	1395566.89	3186965.00	40.417290	-104.828519
	1000.00	8.74	219.45	994.58	50.93	-59.08	-50.67	0.05	1395556.30	3186956.38	40.417261	-104.828550
	1090.00	8.50	218.60	1083.56	59.47	-69.55	-59.17	0.30	1395545.76	3186947.97	40.417232	-104.828580
	1180.00	9.87	221.25	1172.41	68.75	-80.55	-68.40	1.59	1395534.69	3186938.82	40.417202	-104.828614
	1270.00	9.32	219.87	1261.15	78.56	-91.95	-78.16	0.66	1395523.22	3186929.15	40.417171	-104.828649
	1360.00	9.40	218.97	1349.95	87.91	-103.25	-87.46	0.19	1395511.85	3186919.94	40.417140	-104.828682
	1450.00	8.94	218.65	1438.80	96.94	-114.43	-96.45	0.51	1395500.60	3186911.03	40.417109	-104.828714
	1540.00	8.43	219.92	1527.76	105.59	-124.95	-105.05	0.61	1395490.02	3186902.51	40.417080	-104.828745
	1630.00	9.02	217.04	1616.72	114.12	-135.64	-113.53	0.82	1395479.26	3186894.11	40.417051	-104.828776
	1720.00	8.75	220.01	1705.64	122.82	-146.52	-122.18	0.59	1395468.32	3186885.54	40.417021	-104.828807
Last IFR Survey	1750.00	8.62	219.09	1735.30	125.72	-150.01	-125.07	0.63	1395464.81	3186882.68	40.417011	-104.828817
9 5/8" Casing	1829.00	8.68	218.82	1813.40	133.23	-159.25	-132.54	0.10	1395455.51	3186875.28	40.416986	-104.828844
Begin SLB_MWD Survey	1969.00	8.80	218.35	1951.77	146.57	-175.88	-145.81	0.10	1395438.78	3186862.14	40.416940	-104.828892
	2064.00	9.95	216.43	2045.50	156.01	-188.19	-155.19	1.25	1395426.40	3186852.85	40.416906	-104.828925
	2158.00	9.98	217.80	2138.09	165.88	-201.16	-165.01	0.25	1395413.36	3186843.13	40.416871	-104.828961
	2253.00	9.80	223.16	2231.68	176.41	-213.65	-175.48	0.81	1395400.78	3186832.76	40.416837	-104.828998
	2346.00	10.32	209.15	2323.26	185.84	-226.80	-184.85	2.50	1395387.57	3186823.49	40.416800	-104.829032
	2440.00	10.49	211.94	2415.71	194.53	-241.41	-193.48	0.57	1395372.89	3186814.97	40.416760	-104.829063
	2536.00	10.25	214.43	2510.14	204.04	-255.88	-202.93	0.53	1395358.36	3186805.63	40.416721	-104.829097
	2632.00	10.51	213.76	2604.57	213.80	-270.20	-212.62	0.30	1395343.96	3186796.04	40.416681	-104.829132
	2725.00	10.70	211.13	2695.99	223.04	-284.64	-221.80	0.56	1395329.45	3186786.97	40.416642	-104.829165
	2819.00	10.55	211.13	2788.37	232.07	-299.48	-230.76	0.16	1395314.55	3186778.13	40.416601	-104.829197
	2912.00	10.26	215.06	2879.85	241.29	-313.54	-239.92	0.82	1395300.41	3186769.08	40.416562	-104.829230
	3005.00	10.28	213.04	2971.36	250.63	-327.28	-249.20	0.39	1395286.61	3186759.90	40.416525	-104.829263
	3098.00	10.37	210.20	3062.85	259.43	-341.47	-257.94	0.56	1395272.35	3186751.27	40.416486	-104.829294
	3192.00	10.19	208.70	3155.34	267.74	-356.08	-266.19	0.34	1395257.69	3186743.13	40.416446	-104.829324
	3285.00	10.51	215.37	3246.83	276.66	-370.21	-275.05	1.33	1395243.49	3186734.38	40.416407	-104.829356
	3379.00	10.05	216.03	3339.32	286.51	-383.83	-284.83	0.51	1395229.79	3186724.70	40.416369	-104.829391
	3472.00	9.55	216.41	3430.97	295.91	-396.60	-294.19	0.54	1395216.95	3186715.44	40.416334	-104.829424
	3567.00	9.85	219.11	3524.61	305.77	-409.25	-303.99	0.57	1395204.23	3186705.74	40.416300	-104.829460
	3661.00	10.08	217.17	3617.19	315.87	-422.05	-314.03	0.43	1395191.36	3186695.79	40.416265	-104.829496
	3760.00	11.42	218.37	3714.45	327.25	-436.63	-325.35	1.37	1395176.69	3186684.58	40.416224	-104.829536
	3853.00	11.44	218.30	3805.61	338.75	-451.09	-336.78	0.03	1395162.14	3186673.28	40.416185	-104.829577
	3946.00	11.51	215.42	3896.75	349.91	-465.89	-347.88	0.62	1395147.26	3186662.26	40.416144	-104.829617
	4038.00	11.23	222.47	3986.95	361.34	-479.98	-359.25	1.54	1395133.09	3186651.02	40.416106	-104.829658
	4131.00	11.43	215.51	4078.14	372.87	-494.16	-370.71	1.49	1395118.82	3186639.66	40.416067	-104.829699
	4225.00	11.13	215.06	4170.32	383.55	-509.17	-381.33	0.33	1395103.73	3186629.15	40.416025	-104.829737
	4318.00	10.93	217.42	4261.60	394.13	-523.52	-391.85	0.53	1395089.30	3186618.75	40.415986	-104.829775
	4412.00	10.67	213.67	4353.94	404.43	-537.84	-402.09	0.80	1395074.91	3186608.62	40.415947	-104.829812
	4504.00	10.75	212.98	4444.34	413.89	-552.12	-411.48	0.16	1395060.55	3186599.33	40.415907	-104.829846
	4597.00	10.66	214.66	4535.72	423.56	-566.48	-421.09	0.35	1395046.13	3186589.83	40.415868	-104.829880
	4691.00	10.62	213.46	4628.10	433.34	-580.85	-430.81	0.24	1395031.68	3186580.22	40.415829	-104.829915
	4783.00	10.43	211.31	4718.56	442.41	-595.04	-439.82	0.47	1395017.42	3186571.33	40.415790	-104.829947
	4876.00	10.28	210.15	4810.04	451.01	-609.41	-448.36	0.28	1395002.99	3186562.89	40.415750	-104.829978
	4970.00	10.69	214.29	4902.47	460.20	-623.86	-457.48	0.91	1394988.47	3186553.85	40.415711	-104.830011
	5062.00	10.43	216.25	4992.92	469.99	-637.63	-467.21	0.48	1394974.63	3186544.25	40.415673	-104.830046
	5155.00	10.57	212.85	5084.36	479.66	-651.58	-476.82	0.68	1394960.60	3186534.75	40.415634	-104.830080
	5247.00	10.63	215.88	5174.79	489.27	-665.55	-486.37	0.61	1394946.57	3186525.31	40.415596	-104.830115
	5340.00	10.65	216.63	5268.16	499.70	-679.69	-496.74	0.15	1394932.35	3186515.04	40.415557	-104.830152
	5434.00	11.13	215.22	5358.50	509.96	-693.77	-506.94	0.60	1394918.19	3186504.96	40.415519	-104.830189
	5527.00	6.63	211.50	5450.36	518.00	-707.69	-514.92	4.88	1394906.22	3186497.00	40.415486	-104.830217
	5620.00	2.74	206.96	5543.03	521.84	-712.25	-518.74	4.20	1394899.63	3186493.30	40.415462	-104.830231
	5714.00	1.07	257.62	5636.98	523.73	-714.44	-520.61	2.36	1394897.42	3186491.44	40.415462	-104.830238
	5807.00	0.72	292.22	5729.97	525.11	-714.40	-522.00	0.68	1394897.45	3186490.05	40.415462	-104.830243
	5901.00	0.13	302.99	5823.97	525.75	-714.12	-522.64	0.63	1394897.72	3186489.41	40.415463	-104.830245
	5993.00	0.28	330.29	5915.97	525.95	-713.87	-522.84	0.19	1394897.97	3186489.21	40.415463	-104.830246
	6087.00	0.15	351.97	6009.97	526.08	-713.55	-522.97	0.16	1394898.29	3186489.00	40.415464	-104.830246
	6180.00	0.19	329.39	6102.97	526.17	-713.30	-523.06	0.08	1394898.55	3186488.98	40.415465	-104.830246
	6274.00	0.35	296.26	6196.97	526.51	-713.03	-523.40	0.23	1394898.80	3186488.68	40.415466	-104.830248
	6368.00	0.24	278.52	6290.97	526.96	-712.88	-523.85	0.15	1394898.96	3186488.19	40.415466	-104.830249
	6460.00	9.26	269.03	6382.55	534.57	-712.98	-531.46	9.81	1394898.80	3186480.58	40.415466	-104.830277
	6554.00	15.91	258.66	6474.26	554.80	-715.						

Comments	MD (ft)	Incl (°)	Azim True (°)	TVD (ft)	VSEC (ft)	NS (ft)	EW (ft)	DLS (°/100ft)	Northing (ftUS)	Easting (ftUS)	Latitude (°)	Longitude (°)
	6834.00	33.97	262.31	6727.93	669.14	-733.84	-665.94	7.03	1394876.92	3186346.27	40.415409	-104.830760
	6929.00	41.02	265.27	6803.26	726.61	-739.97	-723.39	7.66	1394870.36	3186288.87	40.415392	-104.830966
	7023.00	48.46	265.41	6869.99	792.54	-745.34	-789.29	7.92	1394864.49	3186223.01	40.415377	-104.831203
	7115.00	56.05	265.08	6926.26	865.01	-751.37	-861.74	8.25	1394857.91	3186150.62	40.415361	-104.831463
	7209.00	63.84	265.21	6973.30	946.04	-758.25	-942.74	8.29	1394850.42	3186069.67	40.415342	-104.831754
	7302.00	69.80	265.97	7009.89	1031.27	-764.81	-1027.94	6.45	1394843.21	3185984.53	40.415324	-104.832060
	7394.00	76.29	267.85	7036.71	1119.11	-769.53	-1115.77	7.32	1394837.83	3185896.74	40.415311	-104.832375
	7487.00	81.79	267.39	7054.39	1210.32	-773.32	-1206.96	5.93	1394833.35	3185805.59	40.415300	-104.832702
	7580.00	88.68	267.60	7062.11	1302.87	-777.37	-1299.49	7.41	1394828.60	3185713.09	40.415289	-104.833035
	7672.00	89.21	266.60	7063.80	1394.75	-782.02	-1391.36	1.23	1394823.25	3185621.27	40.415276	-104.833365
	7767.00	90.29	267.39	7064.22	1489.64	-787.00	-1486.22	1.41	1394817.55	3185526.45	40.415263	-104.833705
	7859.00	90.76	266.46	7063.37	1581.52	-791.93	-1578.08	1.13	1394811.92	3185434.63	40.415249	-104.834035
	7952.00	92.02	266.72	7061.12	1674.35	-797.46	-1670.89	1.38	1394805.69	3185341.87	40.415234	-104.834368
	8044.00	92.30	267.91	7057.65	1766.20	-801.77	-1762.72	1.33	1394800.69	3185250.08	40.415222	-104.834698
	8137.00	92.38	268.04	7053.85	1859.08	-805.05	-1855.59	0.16	1394796.70	3185157.25	40.415213	-104.835032
	8231.00	92.07	266.79	7050.20	1952.93	-809.29	-1949.42	1.37	1394791.75	3185065.45	40.415201	-104.835369
	8325.00	92.05	267.18	7046.82	2046.76	-814.23	-2043.23	0.42	1394786.10	3184969.69	40.415188	-104.835706
	8417.00	92.29	268.61	7043.34	2138.64	-817.61	-2135.10	1.57	1394782.03	3184877.85	40.415178	-104.836036
	8510.00	92.02	269.46	7039.84	2231.57	-819.17	-2228.02	0.96	1394779.76	3184784.95	40.415174	-104.836369
	8603.00	91.96	269.23	7036.61	2324.51	-820.24	-2320.95	0.26	1394778.00	3184692.02	40.415171	-104.836703
	8695.00	91.76	268.81	7033.63	2416.46	-821.81	-2412.89	0.51	1394775.73	3184600.11	40.415167	-104.837033
	8788.00	92.31	269.98	7030.32	2509.39	-822.79	-2505.83	1.39	1394774.04	3184507.18	40.415164	-104.837367
	8883.00	92.11	269.70	7026.66	2604.32	-823.06	-2600.76	0.36	1394773.06	3184412.26	40.415163	-104.837708
	8976.00	90.88	269.91	7024.23	2697.29	-823.37	-2693.72	1.34	1394772.04	3184319.31	40.415163	-104.838042
	9070.00	89.28	269.57	7024.10	2791.28	-823.80	-2787.72	1.74	1394770.90	3184225.32	40.415161	-104.838379
	9163.00	88.50	268.87	7025.91	2884.26	-825.06	-2880.69	1.13	1394768.93	3184132.37	40.415158	-104.838713
	9256.00	88.94	269.29	7027.98	2977.23	-826.56	-2973.65	0.65	1394766.73	3184039.42	40.415154	-104.839047
	9349.00	88.73	268.97	7029.87	3070.21	-827.97	-3066.62	0.41	1394764.62	3183946.47	40.415150	-104.839381
	9442.00	88.39	268.61	7032.21	3163.16	-829.93	-3159.57	0.53	1394761.95	3183853.54	40.415144	-104.839715
	9535.00	90.37	269.94	7033.22	3256.15	-831.11	-3252.55	2.56	1394760.07	3183760.57	40.415141	-104.840049
	9628.00	89.44	268.87	7033.37	3349.15	-832.07	-3345.55	1.52	1394758.40	3183667.59	40.415138	-104.840382
	9720.00	90.21	269.62	7033.65	3441.14	-833.29	-3437.54	1.17	1394756.49	3183575.62	40.415135	-104.840713
	9813.00	90.32	269.21	7033.22	3534.14	-834.24	-3530.53	0.46	1394754.84	3183482.64	40.415132	-104.841047
	9906.00	90.22	268.85	7032.78	3627.13	-835.81	-3623.56	0.40	1394752.56	3183389.67	40.415128	-104.841381
	9999.00	89.18	267.86	7032.27	3720.10	-838.48	-3716.47	1.54	1394749.18	3183296.74	40.415121	-104.841715
	10093.00	89.82	268.75	7034.09	3814.06	-841.26	-3810.43	1.17	1394745.69	3183202.81	40.415113	-104.842052
	10185.00	91.02	270.50	7033.42	3906.05	-841.86	-3902.42	2.31	1394744.39	3183110.88	40.415111	-104.842382
	10278.00	89.95	267.68	7032.63	3999.03	-843.34	-3995.39	3.24	1394742.21	3183017.83	40.415107	-104.842716
	10370.00	90.68	270.22	7032.12	4091.02	-845.03	-4087.37	2.87	1394739.83	3182925.92	40.415103	-104.843046
	10463.00	90.38	269.92	7031.26	4184.01	-844.91	-4180.36	0.46	1394739.24	3182832.93	40.415103	-104.843380
	10556.00	89.36	267.82	7031.47	4276.99	-846.75	-4273.34	2.51	1394736.70	3182739.98	40.415098	-104.843714
	10649.00	90.92	270.62	7031.25	4369.98	-848.01	-4366.32	3.45	1394734.73	3182647.01	40.415094	-104.844048
	10742.00	91.07	268.99	7029.63	4462.96	-848.33	-4459.30	1.76	1394733.71	3182554.04	40.415093	-104.844382
	10835.00	90.43	269.55	7028.41	4555.95	-849.51	-4552.28	0.91	1394731.82	3182461.07	40.415090	-104.844716
	10928.00	90.40	270.21	7027.74	4648.94	-849.71	-4645.28	0.71	1394730.92	3182368.08	40.415089	-104.845050
	11021.00	89.88	270.20	7027.51	4741.94	-849.37	-4738.28	0.56	1394730.55	3182275.09	40.415090	-104.845384
	11114.00	90.05	270.16	7027.57	4834.94	-849.08	-4831.28	0.19	1394730.14	3182182.09	40.415091	-104.845718
	11206.00	90.10	271.16	7027.45	4926.92	-848.02	-4923.27	1.09	1394730.50	3182090.10	40.415094	-104.846048
	11298.00	90.17	270.40	7027.23	5018.91	-846.77	-5015.26	0.83	1394731.06	3181998.11	40.415097	-104.846379
	11391.00	90.46	270.39	7026.72	5111.90	-846.13	-5108.26	0.31	1394730.99	3181905.11	40.415099	-104.846713
	11486.00	90.54	269.96	7025.89	5206.89	-845.84	-5203.25	0.46	1394730.57	3181810.12	40.415100	-104.847054
	11582.00	90.73	270.60	7024.83	5302.88	-845.37	-5299.25	0.70	1394730.31	3181714.13	40.415101	-104.847399
	11674.00	90.91	270.37	7023.51	5394.87	-844.59	-5391.23	0.32	1394730.39	3181622.14	40.415103	-104.847729
	11767.00	90.94	270.83	7022.01	5487.84	-843.62	-5484.22	0.50	1394730.66	3181529.16	40.415106	-104.848063
	11860.00	89.93	269.76	7021.30	5580.83	-843.14	-5577.21	1.58	1394730.43	3181436.17	40.415107	-104.848397
	11954.00	89.92	269.54	7021.43	5674.83	-843.71	-5671.21	0.23	1394729.15	3181342.18	40.415105	-104.848734
	12047.00	90.17	269.84	7021.35	5767.83	-844.22	-5764.21	0.42	1394727.94	3181249.19	40.415104	-104.849068
	12140.00	90.04	269.38	7021.18	5860.83	-844.85	-5857.20	0.51	1394726.60	3181156.21	40.415102	-104.849402
	12235.00	90.19	269.87	7020.99	5955.83	-845.47	-5952.20	0.54	1394725.26	3181061.22	40.415100	-104.849743
	12329.00	90.15	269.78	7020.71	6049.83	-845.76	-6046.20	0.10	1394724.26	3180967.23	40.415099	-104.850081
	12423.00	90.03	269.76	7020.57	6143.83	-846.14	-6140.20	0.13	1394723.17	3180873.24	40.415098	-104.850419
	12515.00	90.59	271.25	7020.07	6235.82	-845.32	-6232.19	1.73	1394723.29	3180781.25	40.415101	-104.850749
	12610.00	90.09	270.43	7019.51	6330.80	-843.93	-6327.18	1.01	1394723.96	3180686.26	40.415104	-104.851090
	12702.00	88.01	269.23	7021.03	6422.78	-844.20	-6419.16	2.61	1394722.99	3180594.29	40.415103	-104.851420
	12796.00	89.59	268.31	7023.00	6516.74	-846.22	-6513.11	1.94	1394720.26	3180500.36	40.415098	-104.851758
	12889.00	88.44	266.25	7024.60	6609.64	-850.63	-6605.99	2.54	1394715.15	3180407.52	40.415086	-104.852091
	12983.00	90.75	270.23	7025.26	6703.58	-853.52	-6699.91	4.90	1394711.55	3180313.62	40.415078	-104.852429
	13077.00	92.44	273.94	7022.65	6797.44	-850.10	-6793.80	4.34	1394714.26	3180219.72	40.415087	-104.852766
	13170.00	90.77	270.20	7020.04	6890.31	-846.75	-6886.68	4.40	1394716.91	3180126.82	40.415096	-104.853099
	13262.00	91.12	270.16	7018.52	6982.29	-846.46	-6978.67	0.38	1394716.50	3180034.84	40.415097	-104.853430
	13356.00	90.56	270.30	7017.14	7076.28	-846.08	-7072.66	0.61	1394716.17	3179940.85	40.415098	-104.853767
	13448.00	91.05	270.78	7015.85	7168.26	-845.21	-7164.64	0.75	1394716.34	3179848.86	40.415100	-104.854098
	13541.00	90.58	270.98	7014.53	7261.23	-843.79	-7257.62	0.55	1394717.06	3179755.88	40.415104	-104.854431
	13633.00	90.48	269.28	7013.68	7353.22	-843.58	-7349.61	1.85	1394716.57	3179663.89	40.415104	-104.854762
	13728.00	90.61	270.07	7012.77	7448.22	-844.12	-7444.61	0.84	1394715.31	3179568.91	40.415103	-104.855103
	13820.00	90.12	269.08	7012.19	7540.22	-844.80	-7536.60	1.20	1394713.93	3179476.93	40.415101	-104.855433
	13913.00	90.28	269.14	7011.86	7633.21	-846.24	-7629.59	0.18	1394711.79	3179383.96	40.415097	-104.855767
	14006.00	90.24	269.64	7011.44	7726.21							

Comments	MD (ft)	Incl (°)	Azim True (°)	TVD (ft)	VSEC (ft)	NS (ft)	EW (ft)	DLS (°/100ft)	Northing (ftUS)	Easting (ftUS)	Latitude (°)	Longitude (°)
	16976.00	91.70	273.47	7008.00	10694.08	-896.70	-10690.27	1.87	1394638.15	3176323.87	40.414955	-104.866759
	17069.00	91.47	272.51	7005.43	10786.89	-891.85	-10783.10	1.06	1394642.30	3176231.01	40.414969	-104.867092
	17162.00	91.17	273.39	7003.29	10879.72	-887.07	-10875.95	1.00	1394646.38	3176138.13	40.414982	-104.867425
	17255.00	90.05	270.41	7002.30	10972.64	-883.98	-10968.89	3.42	1394648.76	3176045.18	40.414990	-104.867759
Last SLB_MWD Survey	17348.00	90.49	272.17	7001.86	11065.60	-881.89	-11061.86	1.95	1394650.15	3175952.20	40.414996	-104.868093
Projection to Bit	17401.00	90.49	272.17	7001.40	11118.55	-879.88	-11114.82	0.00	1394651.75	3175899.23	40.415001	-104.868283

Survey Type: Def Survey

Survey Error Model: ISCWSA Rev 0 \*\*\* 3-D 95.000% Confidence 2.7955 sigma  
 Survey Program:

Description	Part	MD From (ft)	MD To (ft)	EOU Freq (ft)	Hole Size (in)	Casing Diameter (in)	Survey Tool Type	Borehole / Survey
	1	0.000	20.000	1/98.425	13.500	9.625	NAL_MWD_IFR1-Depth Only	Original Hole / Bost Farm 32N-11C-L IFR 0' to 17401' Definitive
	1	20.000	20.000	Act Stns	13.500	9.625	NAL_MWD_IFR1-Depth Only	Original Hole / Bost Farm 32N-11C-L IFR 0' to 17401' Definitive
	1	20.000	1829.000	Act Stns	13.500	9.625	NAL_MWD_IFR1	Original Hole / Bost Farm 32N-11C-L IFR 0' to 17401' Definitive
	1	1829.000	17401.000	Act Stns	8.500	5.500	NAL_MWD_IFR1+MS	Original Hole / Bost Farm 32N-11C-L IFR 0' to 17401' Definitive